

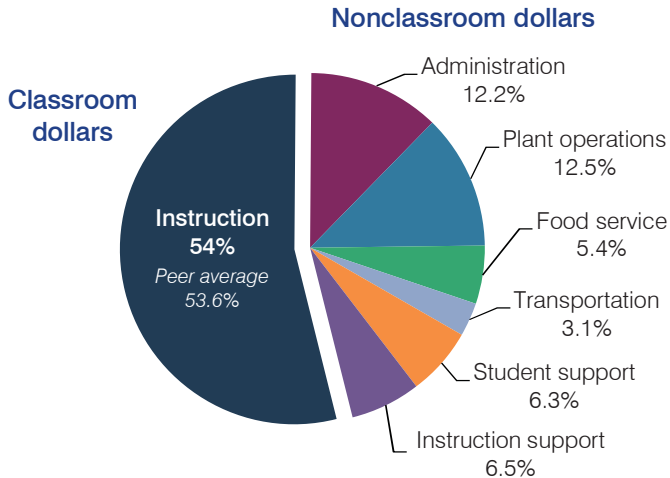
Lake Havasu Unified School District

Mohave County
Efficiency peer groups 3 and T-5, Achievement peer group 3
Legislative district(s): 5

District size, location: Medium-large, City
Students attending: 5,454
Number of schools: 8

OPERATIONAL EFFICIENCY

Spending by operational area



Efficiency measures relative to peer averages

Operational area	Measure	District	Peer average	State average
Administration	Cost per pupil	\$768	\$780	\$780
	Students per administrative position	62	68	67
Plant operations	Cost per square foot	\$5.47	\$5.87	\$6.09
	Square footage per student	143	160	153
Food service	Cost per meal equivalent	\$2.65	\$2.92	\$2.79
Transportation	Cost per mile	\$3.81	\$3.48	\$3.66
	Cost per rider	\$1,520	\$1,392	\$1,071
		Very low	Low	Comparable
		High	Very high	

Per pupil spending

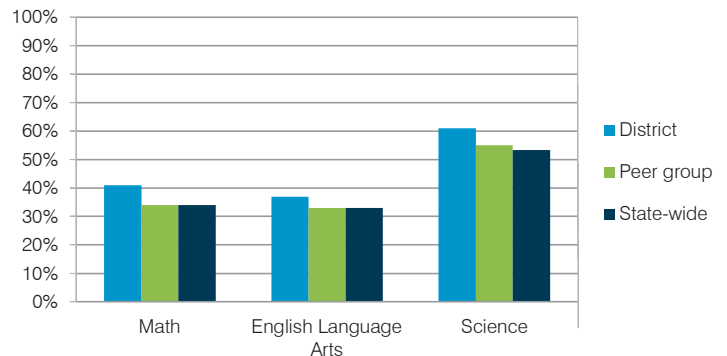
Spending by area	District		Peer average 2015	State average 2015
	2014	2015		
Instruction	\$ 3,275	\$ 3,385	\$ 3,812	\$ 4,105
Administration	697	768	780	780
Plant operations	794	784	928	930
Food service	340	339	322	417
Transportation	176	194	412	371
Student support	373	397	553	613
Instruction support	461	406	304	442
Total operational	\$ 6,116	\$ 6,273	\$ 7,111	\$ 7,658
Land and buildings	\$ 302	\$ 482	\$ 676	\$ 641
Equipment	173	212	499	383
Interest	50	53	225	225
Other	97	68	145	150
Total nonoperational	\$ 622	\$ 815	\$ 1,545	\$ 1,399
Total per pupil spending	\$ 6,738	\$ 7,088	\$ 8,656	\$ 9,057

STUDENT AND TEACHER MEASURES, FINANCIAL ASSESSMENT, AND REVENUE

Student and teacher measures

Measure	District	Peer average	State average
Attendance rate	95%	94%	94%
Graduation rate (2014)	84%	81%	76%
Poverty rate (2014)	24%	22%	23%
Students per teacher	18.9	18.8	18.6
Average teacher salary	\$38,190	\$44,582	\$46,008
Average years of teacher experience	9.3	11.7	11.0
Percentage of teachers in first 3 years	24%	18%	20%

Students who met state standards



Financial stress assessment

Overall financial stress level: **Low**

Measure: 2013 through 2015

Assessment

Change in number of district students	Steady	
Spending exceeded operating/capital budgets	No overspending	
Spending increase election results	Voter-rejected	
Operating reserve percentage (max. 4%), trend	3.4%, Increasing	
Years of capital reserve held	1 to 3 years	
Current financial and internal control status	Compliant	
Low	Moderate	High

Per pupil revenues

Revenues by source	District		Peer average 2015	State average 2015
	2014	2015		
Federal	\$ 842	\$ 726	\$ 771	\$ 1,299
State	1,751	1,691	2,873	3,517
Local	4,399	5,482	4,889	4,248
Total revenues per pupil	\$ 6,992	\$ 7,899	\$ 8,533	\$ 9,064
Select revenues from common sources				
Equalization formula funding	\$ 4,975	\$ 4,673	\$ 5,412	\$ 5,303
Grants	899	889	798	1,167
Donations and tax credits	128	143	127	78
Select revenues from less common sources				
Desegregation	\$ 0	\$ 0	1 of 15	
Small school adjustment	0	0	0 of 15	
Federal impact aid	0	0	3 of 15	
Voter-approved levy increases	886	821	14 of 15	

Lake Havasu USD—page 2

Classroom dollar percentage

Year:	2001	2002	2003	2004	2005	2006	2007	2008	2009	2010	2011	2012	2013	2014	2015
Percentage:	60.3	61.1	61.7	60.1	61.1	61.8	61.2	59.8	59.5	59.1	56.5	53.9	55.6	53.6	54.0

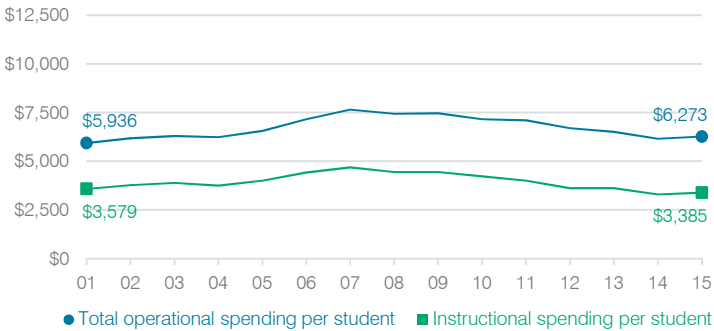
OPERATIONAL TRENDS

Fiscal years as indicated

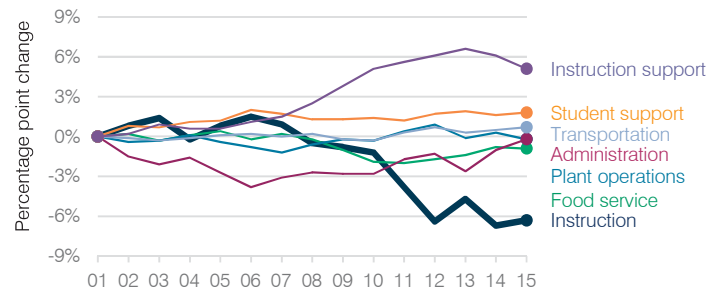
5-year spending trend (2010 through 2015)

Total operational spending per pupil, adjusted for inflation, decreased by 12 percent. The percentage of dollars spent in the classroom varied year to year, decreasing overall from 59.1 to 54 percent. Overall, as a percentage of total operational spending, administration increased substantially and food service and transportation increased, while all other nonclassroom areas varied year to year.

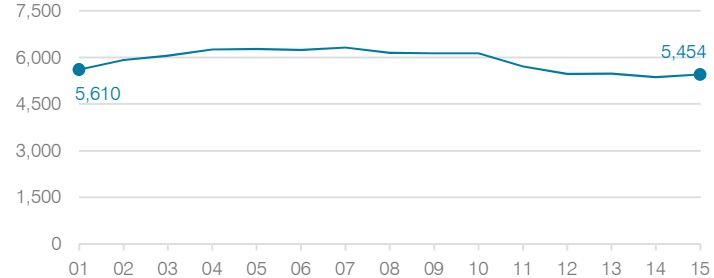
Total operational and instructional spending per student (inflation adjusted to 2015 dollars)



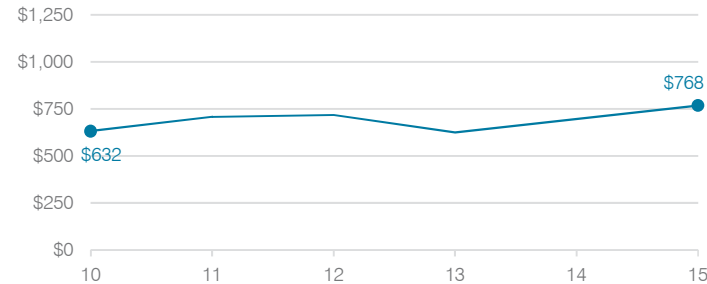
Changes in operational spending percentages



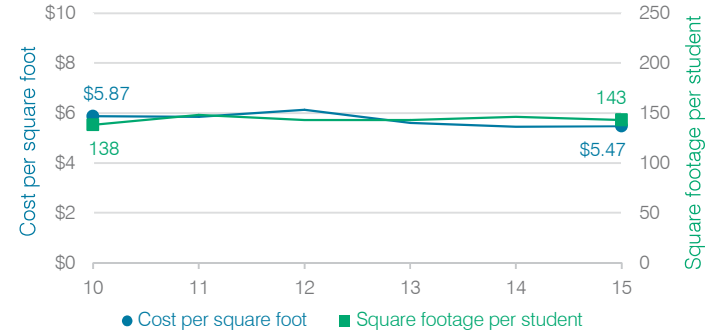
Students attending



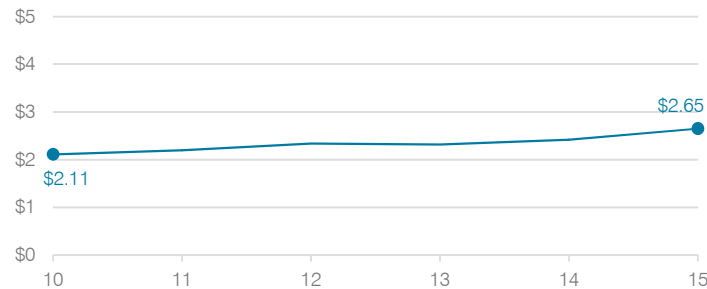
Administrative cost per student



Plant cost per square foot and square footage per student



Food service cost per meal



Transportation costs per mile and per rider

