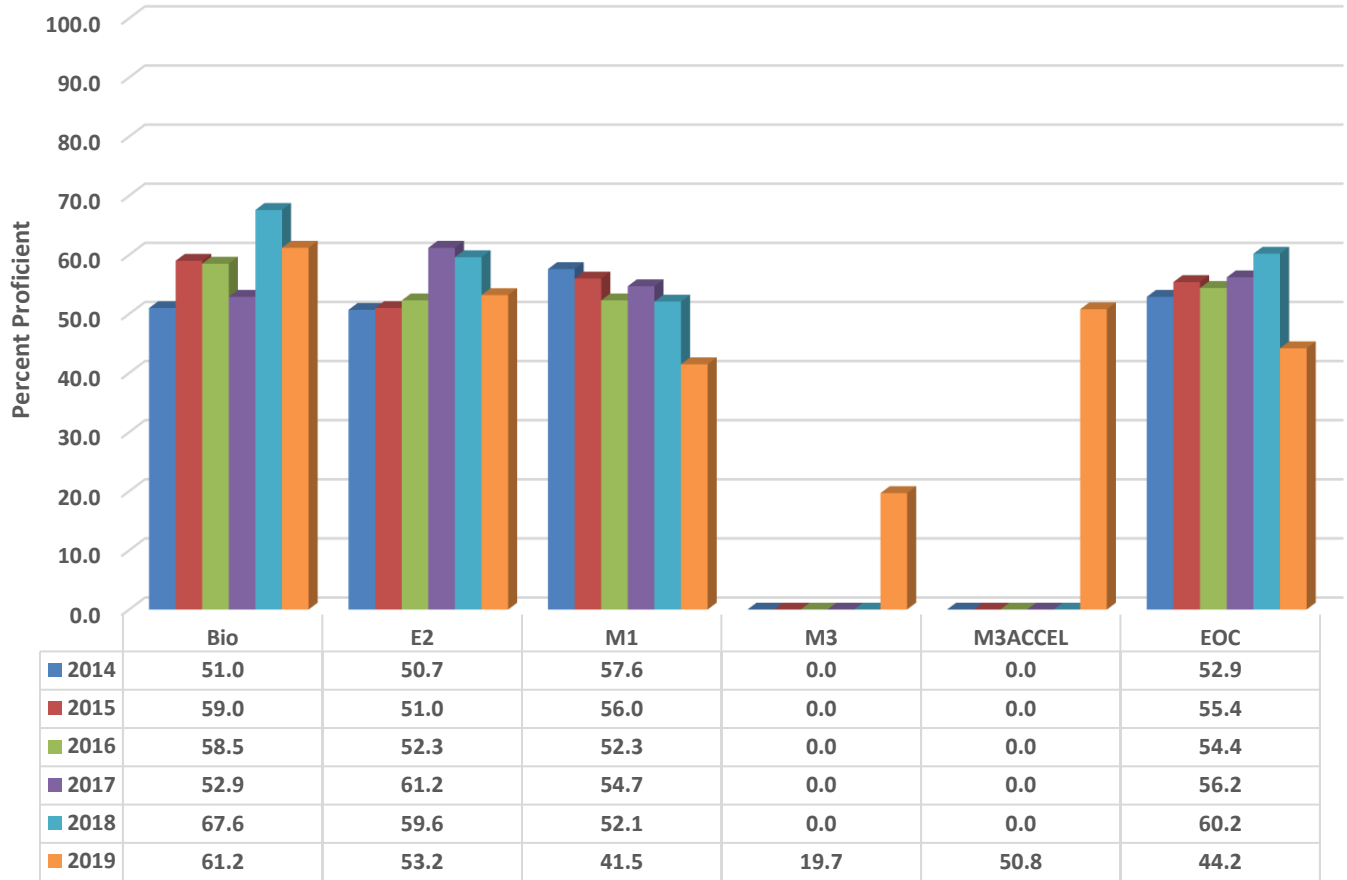


### Southwestern Randolph High Six Year Comparison Using GLP



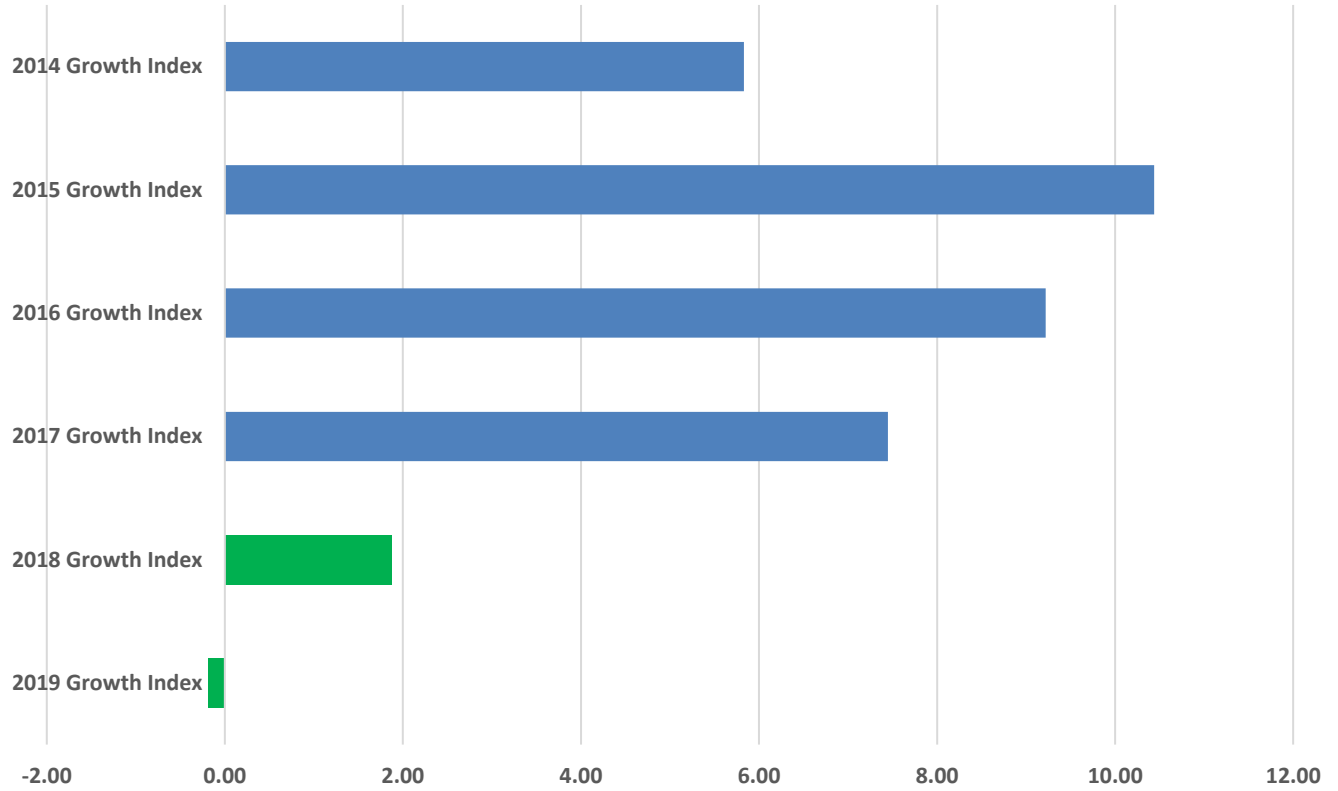
### READY Accountability Model

	CCR Denominator	CCR Percent	GLP Denominator	GLP Percent
2014	817	43.7	817	52.9
2015	830	44.7	830	55.3
2016	856	44.5	856	54.4
2017	786	43.0	786	56.2
2018	741	48.7	741	60.2
2019	792	28.2	792	44.2

### Growth and Participation Targets

	Growth Status	Total Targets	Targets Met	Target Percent
2014	Exceeded Expected Growth	54	40	74.1
2015	Exceeded Expected Growth	57	39	68.4
2016	Exceeded Expected Growth	28	28	100.0
2017	Exceeded Expected Growth	27	27	100.0
2018	Met Expected Growth	19	19	100.0
2019	Met Expected Growth	19	19	100.0

### Southwestern Randolph High Six Year Growth Index



	2019 Growth Index	2018 Growth Index	2017 Growth Index	2016 Growth Index	2015 Growth Index	2014 Growth Index
■ SWRHS	-0.18	1.87	7.45	9.22	10.44	5.83

### Growth Index

	School Accountability Type	Index	Level
<b>2014</b>	Math I, Biology, English II	5.83	Exceeded Expected Growth
<b>2015</b>	Math I, Biology, English II	10.44	Exceeded Expected Growth
<b>2016</b>	Math I, Biology, English II	9.22	Exceeded Expected Growth
<b>2017</b>	Math I, Biology, English II	7.45	Exceeded Expected Growth
<b>2018</b>	NC Math I, Biology, and English II	1.87	Met Expected Growth
<b>2019</b>	NC Math I, NC Math III, Biology, and English II	-0.18	Met Expected Growth