



# Calhoun R-VIII Newsletter



## Important Dates:

**Feb 10 – Father-Daughter Dance @ 6:00 pm**

**Feb 13 – Senior Night**

**Feb 14 – MoACTE  
Legislative Day  
(FCCLA/FBLA)**

**Feb 16 – Early Release @  
12:30 pm**

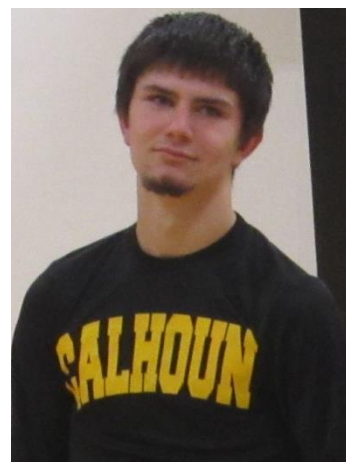
**Feb 19 – NO SCHOOL  
(President's Day)**

Andy Redding is an active senior at Calhoun R-VIII. He is usually running cross-country or playing basketball, but his down-time doesn't slow him down. He loves to hang out with friends and go hunting and fishing.

Andy's future involves a simple life. He wants to get a good job after high school, get married, have a couple of kids, and live "happily ever after." He plans on sticking around the Calhoun area as long as he can.

Andy's most influential role models are his parents, who have always been there when he

needed them and guided him to be the best he could be. As far as Calhoun R-VIII, he will remember most are his small but mighty classmates.



His biggest challenge the last 4 years was not in the classroom, but on the cross-country course. He had to learn to never give up. For him, the 5:30 am 5-mile run was hard to do every morning before school, but his perseverance got him to state 3 times in 4 years. His advice to the underclassmen is "have fun. Don't let people get you down."

## Honor Band



Saturday, January 13, Reese Hartgrave and Autumn Rusche participated in the West Central Middle School Honor Band. The bands are made up of selected 7<sup>th</sup> and 8<sup>th</sup> graders from around the district. They spent all day



preparing for an evening concert. The girls enjoyed their clinician, Mike Steffen, who had taught in the Lee's Summit District for many years before becoming a Palen Music Representative.

## Homecoming—Back to the 80s

Homecoming (January 22-26) brought a blast from our neon past. The students and faculty went all out this year with their 80s attire and decorations. Each day of the week gave us a different style of dress to accommodate, and even the faculty got in on the fun.

Monday = Totally 80s



Thursday = Twin Day



Tuesday = Hawaiian Day



Friday = Black and Gold



Wednesday = Wacky Wednesday



Elementary students held a door-decorating contest, while the junior high and high school decorated banners. The elementary was awarded 4 prizes and a spirit stick:

Most Attractive = 3<sup>rd</sup> and 4<sup>th</sup> Grade

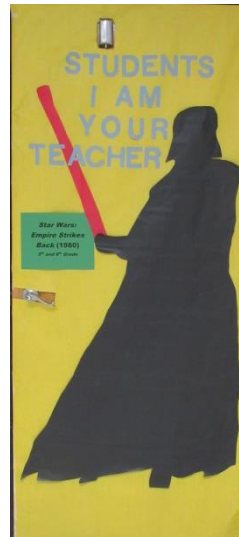


Most Creative = 1<sup>st</sup> and 2<sup>nd</sup> Grade



Totally 80s = 5<sup>th</sup> and 6<sup>th</sup> Grade

Most Colorful = Kindergarten



Spirit Stick = 1<sup>st</sup> and 2<sup>nd</sup> Grade





The junior high and high school were awarded 1 prize and a spirit stick:

Best Banner = Seniors



Spirit Stick = Juniors



The pep assembly started with a rad 80s medley from our cheerleaders. The featured games made the kids work for the win. The elementary was tied up during the three-legged race. Then their teachers got tangled as the students wrapped them in toilet paper. The high school's hands were tied as they tried to sink baskets on each other's heads with balloons and no hands allowed. They then had a dizzying good time trying to do a relay. Everyone



participating had a blast, and the spectators got some good laughs along the way.



After the basketball games, we crowned our royalty. The young men were dashing, and the girls were magnificent. Shae Willis, the 2017 Queen, was escorted that night by senior David Boonstra. She was accompanied by Emmilyn Carney and Carson Antwiler, the 2018 Mini-Queen and Mini-King. Shae, Carson, and Emmilyn crowned the 2018 royalty. Our newest royals looked regal, as they posed for their court photograph.



Prince Andy Redding



King Nicholas Rusche



Princess Elizabeth Thomas



Queen Tylar White





The night ended with a homecoming danced that welcomed junior high and high school students. The room was decked with neon tablecloths, balloons, and streamers. Mr. Duensing was their totally rad DJ, and everyone danced the night away.



## **Homecoming Court Biographies**

### **King Nicholas Rusche**

Nicholas is a Junior and the son of Michael and Danielle Rusche. Nicholas is a first-year basketball player. He enjoys riding four-wheelers, fishing, and gaming. After high school, Nicholas plans to become a heavy equipment operator or mechanic.

### **Queen Tylar White**

Tylar is a Junior and the daughter of Randy and Amy White. Her activities include basketball, track & field, volleyball, cheerleading, and FCCLA. After high school, Tylar plans to become a physical therapist assistant with a minor in sports medicine and have a family.



### **Prince Andy Redding**

Andy is a Senior and the son of Kevin and Tina Redding.

### **Princess Elizabeth Thomas**

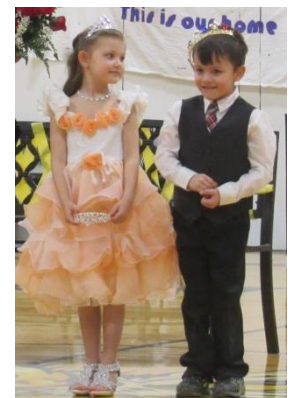
Elizabeth is a Freshman and the daughter of Scott Eichler and Christina Thomas.

### **Mini-King Carson Antwiler**

Carson is in Kindergarten and the son of Tim and Tina Antwiler.

### **Mini-Queen Emmilyn Carney**

Emmilyn is in Kindergarten and the daughter of Brent Carney and Miranda Houk.



## FCCLA/FBLA



Three members of FCCLA along with their advisor, Mrs. Kathy S. O'Dell, attended the Gary Michaels, Jr. Memorial Blood Drive, held January 9 and 10, 2018, at the Benson Center in Clinton, MO. The purpose of attending was to help as volunteers for the community blood drive being held by Red Cross.

Seniors David Boonstra and Taylor Trull, along with Junior Tylar White, worked most of the day at the blood drive. Some of their duties included setting up the snack station, preparing sandwiches, organizing cookie donations and filling trays for serving. The students also welcomed donors to the building, assisted them in registration and signing the guest book, and escorted them from the donation table to the snack area.

Blood drive coordinators, Dave and Sandie Sorbo, stated that "the students demonstrated such wonderful abilities in listening to directions, completing tasks efficiently and showing appreciation to other volunteers, donors, and Red Cross Staff." Many of the donors also commented to Mrs. O'Dell on how wonderful the students were in assisting them through their donation experience.

FCCLA and FBLA Dates to remember:

- FCCLA and FBLA
  - MoACTE Legislative Day Field trip to the Missouri State Capital, February 14, 2018. Bus leaves at 6 am
- FCCLA
  - Deposit for State Leadership Conference due February 5th
  - Final payment for State Leadership Conference due February 27th
  - FCCLA State Leadership Conference, March 11-13, 2018
- FBLA
  - Deposit for State Leadership Conference due February 5th
  - Final payment for State Leadership Conference due March 20, 2018
  - FBLA State Leadership Conference April 8-10, 2018



## **Box Tops for Education**

We are collecting Box Tops for Education. Containers have been placed outside the elementary and high school offices, or you can turn the box tops into your child's teacher. Thank you for your support!



## **MSTA Updates**

CSA made a surprise announcement during the homecoming pep assembly. They honored Shawn Duensing as Teacher of the Year and Tamara Drenon as Staff Member of the Year. The students were excited to be included, and they roared with applause for these two special faculty members.



## **Yearbooks**

Yearbooks are still on sale. Yearbooks are \$35 each, and \$5 to personalize it, but icons are now \$3 each. Turn in all payments and order forms to the secretary in your building (order forms will also be in the main offices of each building). The deadline for this price is March 30.



Please make payments to:

Calhoun R-VIII

Memo: Yearbook



CELEBRATING MOMENTS THAT MATTER

## ORDER BY 3/30/2018

Please make payments to:  
Calhoun R-VIII  
memo: Yearbook

1

**\$35.00**

**\$48.00**

**SIGNATURE PACKAGE** \$48  
Includes Yearbook, 1 Line of Personalization, Color Autograph Section and 8 Multicolor Signing Markers

2

**PERSONALIZATION** Use the space below to personalize your cover. (Must purchase personalization to customize.)

*Must purchase personalization.*

[illegible]

**If you want to personalize your cover, and Personalization is not included in your package, please add the charge to your order below.**

**\$5.00**

3

### ICON 1

--	--	--	--

## ICON 2

--	--	--	--

ICON 3

--	--	--	--

ICON 4

--	--	--	--

5236	5480	5502	5019	5082	5004	5009	5591	5589	5583	5255	5366	5021
5177	5581	5011	9050	5001	5005	5010	5258	5363	9042	5256	5587	5582
5276	5582	5238	5015	5002	5006	5080	5241	5364	5588	5257	5018	9031
5379	5783	5586	5240	5003	5008	9007	5242	FFA 5590	5023	5012	5594	5585

See more icon options at [www.jostens.com/ybicons](http://www.jostens.com/ybicons)

4

**OR ORDER ONLINE AT**  
**jostensyearbooks.com**

Student Name: \_\_\_\_\_

Contact Email: \_\_\_\_\_

Contact Phone: \_\_\_\_\_

Homeroom: \_\_\_\_\_ ID #: \_\_\_\_\_ Grade: \_\_\_\_\_




**Replayit**  
Share your photos at [Replayit.com](http://Replayit.com)

TOTAL YOUR ORDER		
Enter Your Package Price		
Personalization	\$5.00	
Icon(s) ea.	\$3.00 x QTY	
HANDLING FEE	N/A	N/A
SUBTOTAL		
Tax	N/A	
TOTAL		



# Father Daughter Dance\*




Saturday, February 10, 2018

6:00-8:30pm

Calhoun Elementary School

**Advanced tickets** are \$8.00 per couple,  
\$2.00 per additional daughter.

**At the door** \$10.00 per couple,  
\$2.00 per additional daughter.



*Share a fun filled evening  
with your little girl.  
Finger food, photographs,  
and dancing.*

Dance sponsored by the Calhoun Student Council.

A cluster of five pink hearts of various sizes, with the largest heart on the left and several smaller ones to its right and above.

# Calhoun Early Childhood Center February Info

A small cluster of four pink hearts of various sizes, arranged in a loose group.

February 19 – No School (President's Day)

March 8<sup>th</sup> & 9<sup>th</sup> – No school for 4A, 4B, 4C rooms (Teacher training)


March 9<sup>th</sup> – Entire Early Childhood Center closed (Teacher training)

April 30<sup>th</sup> – No school for 4A, 4B, 4C rooms (MPP screenings)

Recently, our 4A, 4B and 4C classrooms had an Early Childhood Environment Rating Scale (ECERS) assessment. The ECERS is a classroom assessment tool designed to measure the quality of group programs for infants and toddlers (birth to age 3) by collecting data through classroom observations and a staff interview.

The assessment is a 43-item rating scale organized into seven environmental subscales.

Our program has a history of scoring significantly higher than the state of Missouri which is exciting for our children to experience learning in a high-quality program.

A cluster of five pink hearts of various sizes, with the largest heart on the left and several smaller ones to its right and above.

Our students deserve only the best and through hands-on learning experiences, they are thriving and learning lots of new things!

We expect to receive the scores soon and are anticipating great scores that correspond with great classrooms!

FINANCIAL STATEMENT FOR THE MONTH OF DECEMBER 2017						
		INCIDENTAL FUND 1	TEACHER FUND 2	DEBT SERVICE FUND 3	CAPITAL IMP FUND 4	TOTAL
Beginning Bal Dec 1, 2017		(\$53,058.75)	(\$65,560.61)	\$0.00	\$4,175.00	(\$114,444.36)
Receipts through Dec 31, 2017		\$173,344.22	\$130,697.29	\$0.00	\$0.00	\$304,041.51
TOTALS		\$120,285.47	\$65,136.68	\$0.00	\$4,175.00	\$189,597.15
Disbursements through Dec 31, 2017		\$163,758.59	\$50,283.33	\$0.00	\$0.00	\$214,041.92
Balance Dec 31, 2017		(\$43,473.12)	\$14,853.35	\$0.00	\$4,175.00	(\$24,444.77)
Beginning Balance July 1, 2017		\$59,879.47				
YTD Receipts through December 31, 2017		\$1,320,557.22				
TOTALS		\$1,380,436.69				
YTD Disbursement through Dec 31, 2017		\$1,404,881.46				
TOTALS		(\$24,444.77)				
LESS INVESTMENTS		\$0.00 **				
OPERATING BALANCE December 31, 2017		(\$24,444.77)				
\$17,236.78 CERTIFICATE OF DEPOSIT						
\$200.00 PETTY CASH						



**February 2018**

Sun	Mon	Tue	Wed	Thu	Fri	Sat
				<b>1</b> <b>Breakfast</b> Biscuit and gravy, peaches, juice, milk <b>Lunch</b> Spaghetti, green beans, salad, pineapple, milk	<b>2</b> <b>Breakfast</b> Oatmeal, yogurt, granola bar, juice, milk <b>Lunch</b> Chili, peanut butter sandwich, steamed carrots, fruit/veg bar, milk	<b>3</b>
<b>4</b> <b>Breakfast</b> Breakfast and lunch menus are subject to change. <b>Lunch</b> "This institution is an equal opportunity provider."	<b>5</b> <b>Breakfast</b> Scrambled eggs, sausage, toast, pears, juice, milk <b>Lunch</b> Pizza, corn, fruit/veg bar, milk	<b>6</b> <b>Breakfast</b> Breakfast pizza, pineapple, juice, milk <b>Lunch</b> Breakfast for lunch, cooks choice, fruit/veg bar, milk	<b>7</b> <b>Breakfast</b> Pancake on a stick, pineapple, juice, milk <b>Lunch</b> Cheeseburger, oven fries, baby carrots, apple, milk	<b>8</b> <b>Breakfast</b> Biscuit and gravy, peaches, juice, milk <b>Lunch</b> Beef soft taco, refried beans, lettuce, cheese, tomato, mandarin oranges, milk	<b>9</b> <b>Breakfast</b> Egg and cheese biscuit, sweet potato fries, juice, milk <b>Lunch</b> Tomato soup, grilled cheese sandwich, broccoli/cheese, fruit/veg bar, milk	<b>10</b>
<b>11</b> <b>Breakfast</b> Grades 5-12 are offered fruit/veg bar daily. <b>Lunch</b> Grades K-4 are offered fruit/veg bar on Monday and Friday.	<b>12</b> <b>Breakfast</b> French toast, sausage, pears, juice, milk <b>Lunch</b> Baked chicken, baked potato, bread stick, fruit/veg bar, milk	<b>13</b> <b>Breakfast</b> Cereal, granola bar, applesauce, juice, milk <b>Lunch</b> Goulash, green beans, steamed carrots, pears, milk	<b>14</b> <b>Breakfast</b> Pancakes or waffles, pineapple, juice, milk <b>Lunch</b> Nachos, corn, bean dip, mixed fruit, milk	<b>15</b> <b>Breakfast</b> Biscuit and gravy, peaches, juice, milk <b>Lunch</b> Tater tot casserole, broccoli/cheese, milk	<b>16</b> <b>Breakfast</b> Oatmeal, yogurt, granola bar, applesauce, juice, milk <b>Lunch</b> Beef stew, roll, green bean casserole, fruit/veg bar, milk	<b>17</b>
<b>18</b>	<b>19</b> <b>Breakfast</b> NO SCHOOL, Presidents Day <b>Lunch</b> Enjoy your day!	<b>20</b> <b>Breakfast</b> Breakfast pizza, pineapple, juice, milk <b>Lunch</b> Hotdog on bun, baked beans, mac & cheese, baby carrots, pineapple, milk	<b>21</b> <b>Breakfast</b> Pancake on stick, pineapple, juice, milk <b>Lunch</b> Grilled cheese, broccoli/cheese, corn, banana, milk	<b>22</b> <b>Breakfast</b> Biscuit and gravy, peaches, juice, milk <b>Lunch</b> Salisbury steak, mashed potatoes and gravy, green beans, mixed fruit, milk	<b>23</b> <b>Breakfast</b> Egg and cheese biscuit, sweet potato fries, juice, milk <b>Lunch</b> Chicken noodle soup, ham & cheese quesadilla, steamed carrots, fruit/veg bar, milk	<b>24</b>
<b>25</b>	<b>26</b> <b>Breakfast</b> French toast, sausage, pears, juice, milk <b>Lunch</b> Baked ham, broccoli/cheese, bread stick, fruit/veg bar, milk	<b>27</b> <b>Breakfast</b> Cereal, granola bar, applesauce, juice, milk <b>Lunch</b> Chicken patty, mashed potatoes and gravy, corn, peaches, bread, milk	<b>28</b> <b>Breakfast</b> Pancakes or waffles, pineapple, juice, milk <b>Lunch</b> BBQ chicken, mac & cheese, baked beans, tomato/cucumber salad, applesauce, milk			