

EAST TALLAHATCHIE SCHOOL DISTRICT



CHARLESTON TIGERS

RETURN TO

LEARN!

Dr. Darron L. Edwards
Superintendent

Table of Contents

Introduction, Message from the Superintendent	3
Reopening Team	4
Internal Timeline of Activities	5
District Calendar	6
Virtual Learning Plan	
Attendance/SPED Populations	7
Grading/ Parent Contract	8
Assessment/ Technology/ Health & Safety	9
Instructional Expectations	10
Food/Nutrition, Transportation	11
Learning Packets	
Attendance, Packet Distribution/Pick-Up	12
Instructional Expectations	13-14
Grading, SPED Populations, Food/Nutrition	15
Health & Safety	16

A Message from the Superintendent

The Board of Trustees and the administration of the East Tallahatchie School District are committed to keeping all of our students, faculty and staff safe and doing all we can to return to as normal of a school year as reasonably possible given the circumstances of the global pandemic COVID-19.

The Mississippi Department of Education released Considerations for Reopening Mississippi's Schools. This statewide document outlines three options for reopening schools: traditional, hybrid, and virtual. Initially, East Tallahatchie School District chose to move forward with the hybrid model. However, as cases of Covid-19 continued to increase, ETSD reversed course and chose to go with the virtual model.

The ETSD Board of Trustees adopted a policy on in July 2020 that outlines the priorities under which schools will be open utilizing a traditional schedule. Those guidelines and regulations are included in this document. It is necessary to keep in mind that all guidelines and regulations are temporary and subject to change as guidance from local and state health authorities is updated.

Regards,

Darron L. Edwards,
Superintendent

Return to School Committee

The committee met during June and July and considered what was best for students, staff, and the community through the lens of physical health, social-emotional health, student achievement, and the financial considerations both short and long term.

Dr. Darron L. Edwards, *Superintendent*

Kawanda Patrice Beamon, *Special Education Director*

Amberly Chapman, *Federal Programs & Curriculum Director*

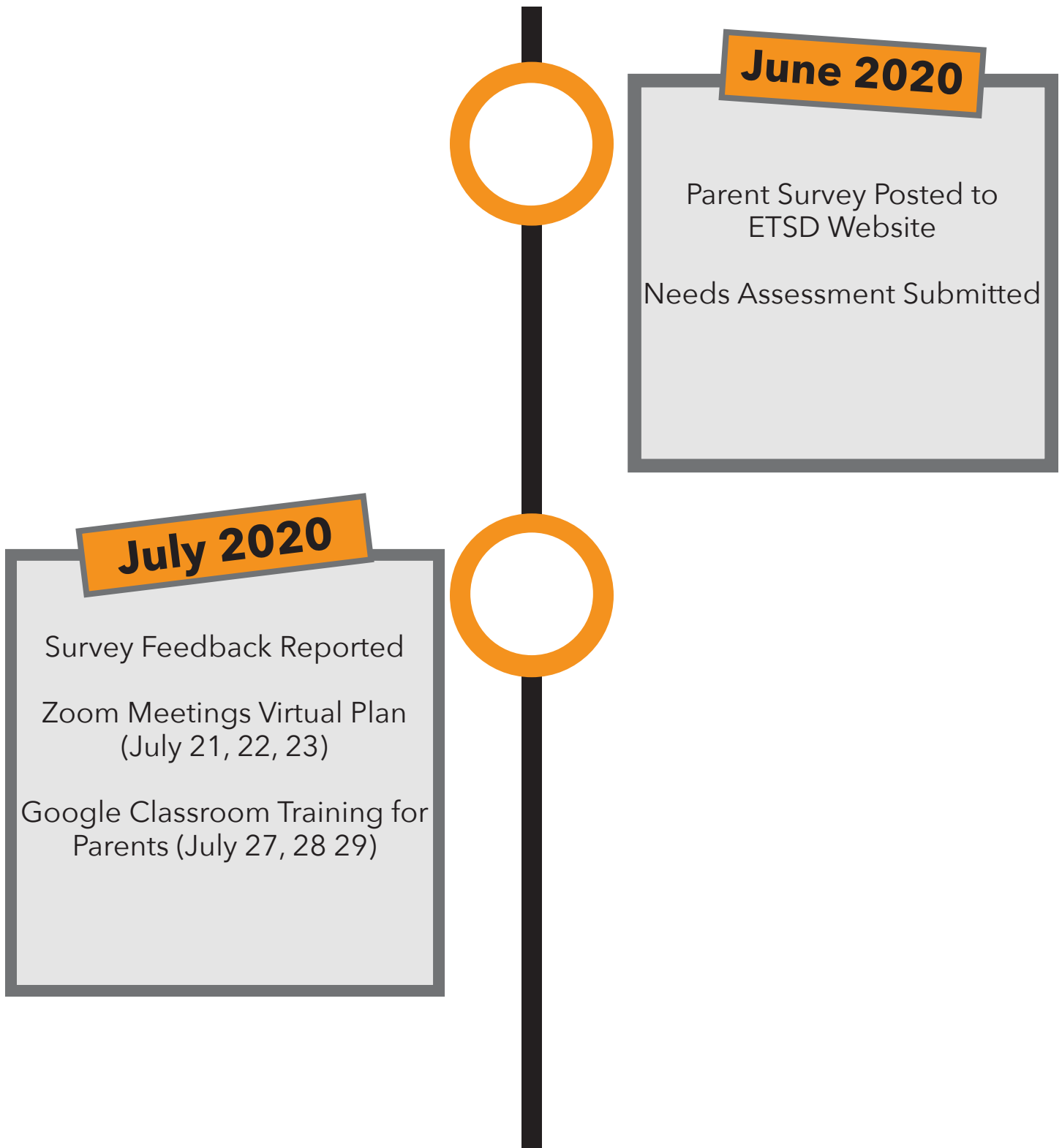
Angie Burnett, *Food Services Director*

Jessica Bradford, *District Administrator*

Donell Bradford, *Transportation*

Ezell Cashaw, *Transportation*

Internal Timeline Of Activities



ETSD 2020-2021

Calendar of Events

July 2020							August 2020							September 2020							October 2020						
Su	Mo	Tu	We	Th	Fr	Sa	Su	Mo	Tu	We	Th	Fr	Sa	Su	Mo	Tu	We	Th	Fr	Sa	Su	Mo	Tu	We	Th	Fr	Sa
			1	2	3	4							1			1	2	3	4	5					1	2	3
5	6	7	8	9	10	11	2	3	4	5	6	7	8	6	7	8	9	10	11	12	4	5	6	7	8	9	10
12	13	14	15	16	17	18	9	10	11	12	13	14	15	13	14	15	16	17	18	19	11	12	13	14	15	16	17
19	20	21	22	23	24	25	16	17	18	19	20	21	22	20	21	22	23	24	25	26	18	19	20	21	22	23	24
26	27	28	29	30	31		23	24	25	26	27	28	29	27	28	29	30				25	26	27	28	29	30	31
							30	31			18	21					21	21							20	20	

November 2020							December 2020							January 2021							February 2021						
Su	Mo	Tu	We	Th	Fr	Sa	Su	Mo	Tu	We	Th	Fr	Sa	Su	Mo	Tu	We	Th	Fr	Sa	Su	Mo	Tu	We	Th	Fr	Sa
1	2	3	4	5	6	7			1	2	3	4	5						1	2		1	2	3	4	5	6
8	9	10	11	12	13	14	6	7	8	9	10	11	12	3	4	5	6	7	8	9	7	8	9	10	11	12	13
15	16	17	18	19	20	21	13	14	15	16	17	18	19	10	11	12	13	14	15	16	14	15	16	17	18	19	20
22	23	24	25	26	27	28	20	21	22	23	24	25	26	17	18	19	20	21	22	23	21	22	23	24	25	26	27
29	30						27	28	29	30	31			24	25	26	27	28	29	30	28						
				16	16						14	14		31				18	19						20	20	

March 2021							April 2021							May 2021							June 2021						
Su	Mo	Tu	We	Th	Fr	Sa	Su	Mo	Tu	We	Th	Fr	Sa	Su	Mo	Tu	We	Th	Fr	Sa	Su	Mo	Tu	We	Th	Fr	Sa
	1	2	3	4	5	6					1	2	3							1			1	2	3	4	5
7	8	9	10	11	12	13	4	5	6	7	8	9	10	2	3	4	5	6	7	8	6	7	8	9	10	11	12
14	15	16	17	18	19	20	11	12	13	14	15	16	17	9	10	11	12	13	14	15	13	14	15	16	17	18	19
21	22	23	24	25	26	27	18	19	20	21	22	23	24	16	17	18	19	20	21	22	20	21	22	23	24	25	26
28	29	30	31				25	26	27	28	29	30		23	24	25	26	27	28	29	27	28	29	30			
				18	18						20	20		30	31			15	18								

Holiday	Professional Development	Students First Day (Return)	Report Cards
Term Exams	Graduation/Students Last Day 60%	Student Day Count (180)	Teacher Day Count (187)

August 3, 4, 5 – Professional Development	January 5 – Students Return
August 6 – Students' First Day	January 18 – Martin Luther King Holiday
September 7 – Labor Day Holiday	March 2-5 – 3 rd 9 wks Exams
October 5-8 – 1 st 9 wks Exams	March 8-12 – Spring Break
October 9, 11 – Fall Break	April 2, 5 – Easter Holiday
November 23-27 – Thanksgiving Holiday	May 17-20 – 4 th 9 wks Exams
December 15-18 – 2 nd 9 wks Exams	May 21 – Students Last Day (60%)
December 18 – 60% Day	May 21 – Graduation
December 21-January 1 – Christmas/New Year	May 24, 25, 26 – Professional Development
January 4 – Professional Development	May 31 – Memorial Day Holiday

**IT'S TIME TO TAKE IT TO THE
NEXT LEVEL**



What Families Can Expect with Our Digital Learning Plan

Virtual Learning

Attendance

Teachers will conduct a Google Meet each day. Students are required to sign on for attendance.

SPED/ Special Populations

Through distance learning, access to comparable opportunities to students with disabilities will be provided and tailored to their individual needs to the maximum extent possible.

Decisions concerning the delivery of services will be based on the student's IEP goals as well as the consideration of the health, safety, and well-being of students and staff.

Instruction to students with disabilities will be provided in alignment with the general education plan and Individual Education Plan (IEP). Special education and related services will be determined based on individual needs by the IEP committee, and any revisions determined necessary for individual students will be made as deemed necessary by the IEP committee.

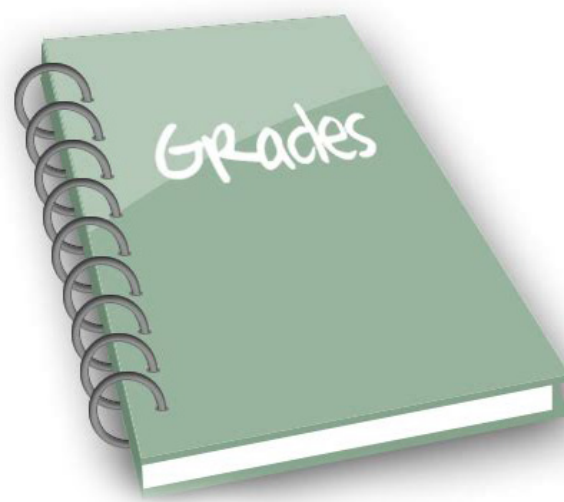
Grading

CES and CMS teachers are required to assign a minimum of 3 daily grades for math and ELA, and 1 quiz/test grade weekly. A standard based test using the Encase platform will be given biweekly to track data and to plan acceleration activities.

CHS teachers are required to assign a minimum of 2 daily grades weekly and 6 test grades per nine weeks. Teachers will track students' data and plan acceleration activities.

Administrators will keep track of grades in SAM by logging in each week to check for the correct number of grades and to determine teacher and student needs based on grades.

A 10-point grading plan will be utilized.



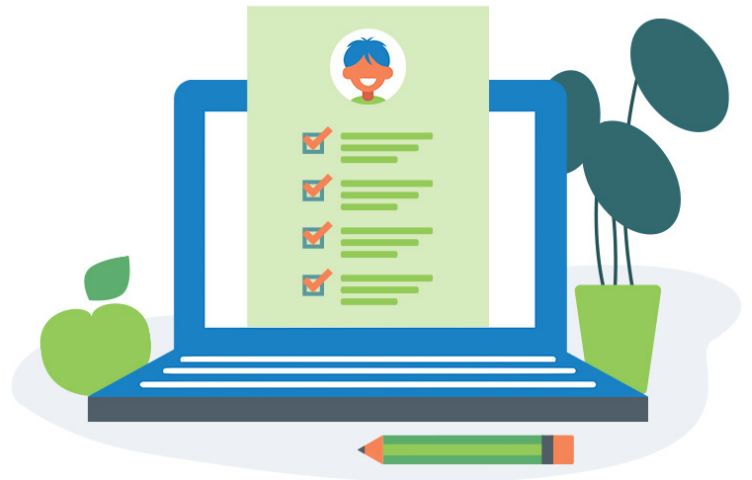
Parent Contact

Teachers will be required to submit daily attendance for virtual logins. For any student that does not login, the teacher will mark the student absent and contact the parent. The teacher will record the contact on a weekly log sheet. All weekly logs are due to administrators each Friday. Teachers will also contact parents weekly to give feedback on assignments and grades.

Assessment

Students will take a diagnostic test using the Renaissance Place Platform (STAR), iReady Diagnostic, and Edgenuity. The results from the diagnostics will be used to identify students needing additional support, as well as for creating an individual learning plan.

Student assessments will be given when the teacher logs on to Google Meet.



Technology

Student who do not have access to a computer will be issued a Chromebook.

Parents will have to sign a contract with guidelines for checking out a computer.

Health & Safety



- All ETSD district employees will wear masks while in contact with other people.
- Masks will be worn on all campuses by visitors upon scheduled visits.
- ETSD will conduct temperature screenings for scheduled school visits.
- Buildings will be cleaned and disinfected daily by custodial staff.
- Nurses will assist with the development of health and safety plans.
- Videos will be posted on social media outlets to help educate viewers on health and safety practices during this pandemic.

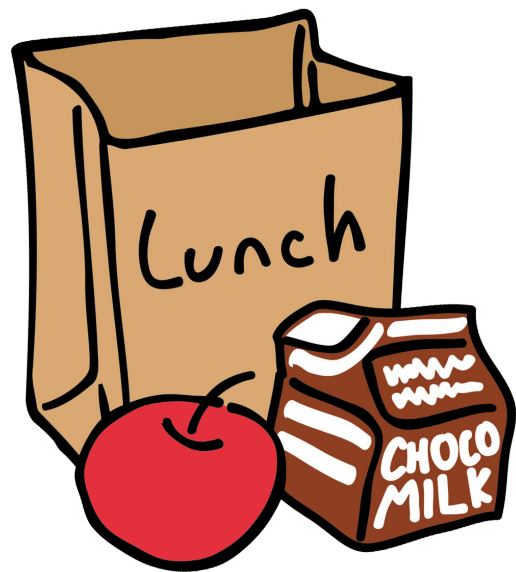
Instructional Expectations

- Teachers will conduct a Google Meet to check attendance and to give a daily standard and assignment overview. During the Google Meet, teachers will create anchor charts aligned to the standards covered daily, model strategies, ask/answer instructional questions from students, and provide whole group practice.
- After whole group practice on the virtual meeting, the teacher will instruct students to complete independent practice assignments and/or daily grade/quizzes.
- Teachers and staff will report online Monday-Friday from 7:30 to 1:00 or based on the district's policy. Work hours will consist of creating anchor charts, and videos for Google Classroom and virtual meetings, creating/grading assignments, etc.
- Teachers will upload at least 1 video to Google Classroom each week. The focus of this video will be the standard/s of the week that students can watch as many times as necessary to complete the week's tasks.
- Lesson plans will be turned in each Thursday by 12pm. The plans should include standards for the week, assignments, acceleration work/support.
- Administrators will conduct drop-ins and observations during Google Meet times.
- Interventionists will be added to each teacher's Google Classroom to provide additional support for identified students.
- Teacher assigned software lessons should align with the pacing guide and standards for the week.
- SPED teachers will create their own Google Classrooms to address specific IEP goals and ensure modifications/accommodations are being implemented.
- PLC/Data Meetings, Faculty Meetings, and Grade level/Team planning will be conducted daily during designated times.



Food/Nutrition

Food will be sent home to children on Monday, Wednesday, and Friday. Food should be consumed within 2 days of receiving.



Transportation

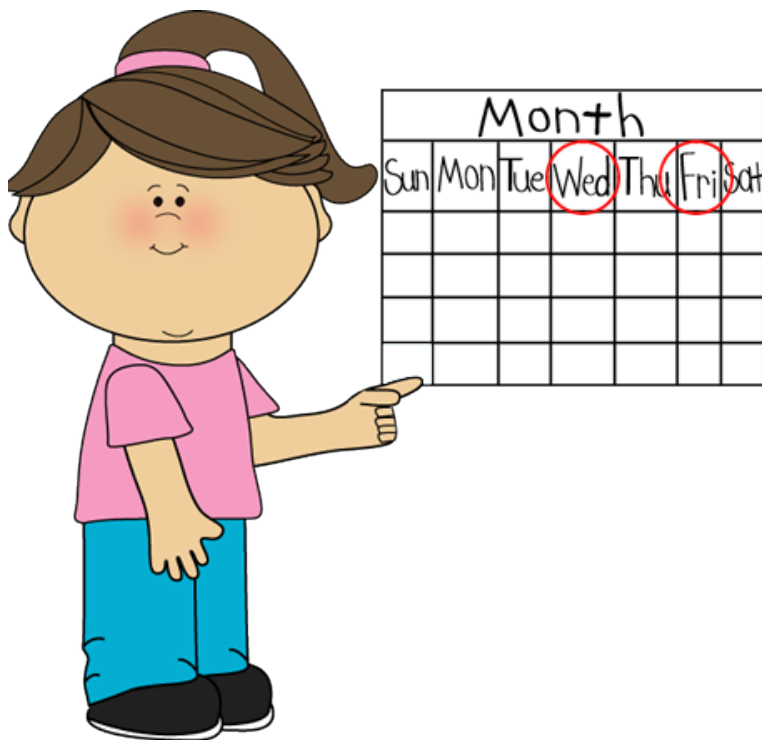
- Buses will be used to deliver breakfast and lunch to students.
- Bus routes will remain the same.
- Buses will be equipped with coolers to keep food fresh until delivery.

What Families Can Expect with our Digital Learning Plan

Learning Packets

Attendance

Teachers will contact parents daily to check in with students. During the first week of school, teachers will conduct a survey for their classrooms to determine student access to technology/ internet. Teachers will report the information (names) to administrators by Wednesday, August 12. Administrators will use the teacher's list to share with bus drivers for weekly delivery of instructional packets.



Packet Distribution/Pick-Up

Each individual teacher will have a container for packets to be delivered. Packets and student names/addresses will be given to the bus driver for delivery of the packet on Monday of each week.

On Fridays, the bus drivers will pick-up completed packets and put them in a designated location in the gym (all packets will sit for a minimum of 5 days before handling).

On Wednesdays, teachers/assistants will wear masks and gloves to pick up packets to grade and to enter in SAM by Friday.

Instructional Expectations

- Teachers will submit instructional packets each Thursday for the following school week. The instructional packets will consist of standards and assignments following the district's pacing guides and Google Classroom material.
- Teachers will continue to upload videos and assignment overviews on Google Classroom and social media outlets for their individual classrooms.
- Work hours will consist of creating lesson guides and mini anchor charts for Google Classroom and packets, virtual meetings, creating/grading assignments, and etc.
- Lesson plans will be turned in each Thursday by 12pm. The plans should include standards for the week, assignments, remediation work/support.
- Interventionists will be added to each teacher's Google Classroom to provide additional support for identified students and will go into the classrooms to provide additional support.
- Interventionists will also complete packets for students that are identified as needing additional support and make parent contact weekly.
- Special education teachers will create their own Google Classrooms to address specific IEP goals and ensure modifications/accommodations are being implemented. Special education teachers will co-teach in general education Google classrooms for inclusion times. Sped teachers will also complete packets for students that are identified as needing additional support and make parent contact weekly.
- PLC/Data Meetings, Faculty Meetings, and Grade level/Team planning will be conducted daily during designated times.
- During parent contact sessions, teachers will provide feedback on the previous week's assignments.
- Administrators will keep track of grades in SAM by logging in each week to check for the correct number of grades and to determine teacher and student needs based on grades.
- Administrators will conduct teacher observations weekly during grade-level meetings, PLCs, faculty meetings, and parent-teacher contacts.
- Students and parents will be given guidance on how to assess their understanding, so they are able to communicate misunderstandings and deficits of the assignment (standard).

Instructional Expectations (cont).

Parent Contact

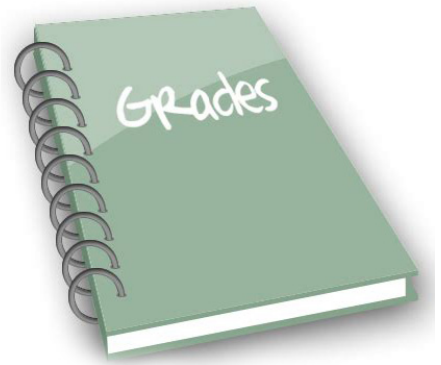
- Teachers will contact parents weekly. Teachers will be required to submit daily attendance for phone check ins. For any student that does not return a completed packet, the teacher will contact parents and/or mark missing grade. The teacher will record the contact on a weekly log sheet. All weekly logs are due to administrators each Friday. Teachers will also contact parents weekly to give feedback on assignments and grades.

Assessment

- Students will take a diagnostic test using the Renaissance Place Platform (STAR), i-Ready Diagnostic, and Edgenuity. The results from the diagnostics will be used to identify students needing additional support, as well as for creating an individual learning plan.

Grading

- CES and CMS teachers are required to assign a minimum of 3 daily grades for math and ELA, and 1 quiz/test grade weekly. A standards-based test using the Encase platform will be given biweekly to track data and to plan acceleration activities.
- CHS teachers are required to assign a minimum of 2 daily grades weekly and 6 test grades per nine weeks. Teachers will track students' data and plan acceleration activities.
- Administrators will keep track of grades in SAM by logging in each week to check for the correct number of grades and to determine teacher and student needs based on grades. Teachers and staff will report to schools on Wednesday's to pick up and grade assignments.



SPED/Special Populations

- Through distance learning, equitable access to comparable opportunities to students with disabilities will be provided and tailored to their individual needs to the maximum extent possible.
- Decisions about the provision of education services will be based on consideration of the health, safety, and well-being of students and staff.
- Instruction to students with disabilities will be provided in alignment with the general education plan and Individual Education Plan (IEP). Revisions to the IEP will be made as deemed necessary by the IEP team.

Food/Nutrition

- Food will be sent home to children on Monday, Wednesday, and Friday. Food should be consumed within 2 days of receiving.

Transportation

- Buses will be used to deliver breakfast and lunch to student.
- Bus routes will remain the same.
- Buses will be equipped with coolers to keep food fresh until delivery.
- Buses will deliver packets on Mondays and pick the completed packs up on Fridays.

Health and Safety

- All ETSD district employees will wear masks while in contact with other people.
- Masks will be worn on all campuses by visitors upon scheduled visits.
- ETSD will conduct temperature screenings for scheduled school visits.
- Buildings will be cleaned and disinfected daily by custodial staff. Gloves and masks will be worn while cleaning and disinfecting the buildings.
- When delivering learning packs and food, gloves and masks will be worn by adults.
- Videos will be posted on social media outlets to help educate viewers on health and safety practices during this pandemic.
- Nurses will assist with the development of health and safety plans.