

2020-2021

**PINE BLUFF SCHOOL DISTRICT**



**BACK  
TO  
SCHOOL**

Plans will be modified as public health guidelines are updated.



# Ready for Learning



The Pine Bluff School District is diligently working to ensure that our staff and students have a safe and enriching educational experience for the 2020-2021 school year. We continue to closely monitor all guidance from the Arkansas Department of Health and the Division of Elementary and Secondary Education. While there is still much uncertainty related to the COVID-19 pandemic situation, we (staff and students) are planning to return to school on **August 25th**. Changing back and forth between instructional delivery systems can be difficult for students, and is discouraged. To make a change, families will need to communicate with the building counselor and follow the procedures for changing their student's placement.

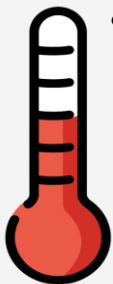
The following health and safety guidance has been recommended by the Arkansas Department of Health for the reopening of schools based on current information and will be updated as the situation changes.

## HEALTH SCREENING & PROTOCOLS

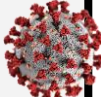
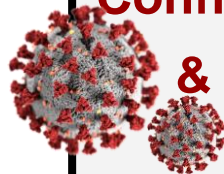
### Screening

The district is committed to maintaining the health and safety of all students and staff. It is our commitment to put protocols in place that will limit the spread of COVID-19, while maintaining an educational environment that is nurturing and values the continuing education of our students.

- **STUDENT SCREENING:** Parents should check their child's temperature each morning for signs of illness. If the child has a temperature of 100.4 degrees or higher, they should not go to school. Make sure your child does not have a sore throat or other signs of illness, like a cough, diarrhea, severe headache, vomiting, or body aches.
- **STAFF SCREENING:** Staff will be expected to screen daily prior to coming to work. Any staff member who has a fever, or symptoms of COVID-19 such as sore throat or other signs of illness, like a cough, diarrhea, severe headache, vomiting, or body aches will need to remain at home.



### Confirmed COVID-19 Case & Isolation Protocol



- If a student is diagnosed with COVID-19, they should notify the school immediately and begin the isolation period.
- Employees who test positive for COVID-19 should contact their direct supervisor. A list of Probable Close Contacts will be compiled and provided to the Arkansas Department of Health. *Probable Close Contact is defined as an individual who was likely to have been within 6 feet for 15 cumulative minutes or longer within a 24 hour period to a person who has tested positive for COVID-19.* Probable Close Contacts will be notified by the Arkansas Department of Health and complete a 14-day quarantine if they are as a confirmed close contact.

**Arkansas Children's Hospital Hotline: 1-800-743-3616**  
**MAIN COVID-19 Hotline: 1-800-803-7847**

The district will collaborate closely with the Arkansas Department of Health and adhere to strict guidelines for following the protocol for confirmed cases and determining probable close contacts.

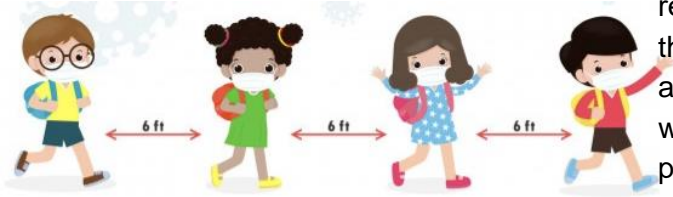
# Safety Processes & Protocols



## Throughout the Day...

The district is committed to providing a safe and clean environment. The building custodial staff will clean and disinfect workspaces at designated cleaning times; however, employees and students are encouraged to assist in maintaining their own personal workspace as needed, giving special attention to commonly touched surfaces. The district has provided alcohol-based hand sanitizer throughout the workplace and in common areas. Cleaning sprays and wipes will be available to clean and disinfect frequently touched objects and surfaces such as telephones and keyboards.

Taking personal responsibility is a key character trait. The district will use this opportunity to teach personal responsibility for cleaning and sanitizing one's work space throughout the day with students. Together, we are stronger and can keep each other safe by encouraging handwashing, wiping work surfaces, wearing our face coverings, and practicing physical distancing.



## Facilities



Schools and buses have been completely cleaned and disinfected this summer. The district's staff will adhere to the general disinfection measures outlined by the state and district. All employees will be responsible for maintaining their space. At the end of each day, custodial staff will follow daily disinfecting and cleaning guidance.

Additionally...

- All students, staff, parents, and visitors will be screened upon entry.
- Staff and Students are required to wear a face mask or covering. The district will provide 5 per staff/student.
- Parents and visitors will have limited access to the school campus.
- Arrival and Dismissal times may vary depending upon grade level and campus.

Deep cleaning and disinfecting protocols are initiated when an employee or student is identified as positive for COVID-19 based on testing. General disinfection measures will be taken with additional measures to electrostatically fog affected spaces with disinfecting equipment/chemicals will be performed after students and staff have left the building.

## Transportation

School buses have been completely cleaned and disinfected this summer. The district will continue to provide bus transportation to students who elect to ride the bus for the F2F instructional option.



Additionally...

- Students will be screened on the bus.
- All students and bus drivers will be required to wear a face covering. The district will provide face coverings, if needed.
- Siblings or students who live together may be assigned to sit together.
- Students are required to wear a face covering and physically distance when possible while at the bus stop.



# Quality Instruction - Equal Access

## The First Day of School - August 25, 2020



August						2020
SUN	MON	TUE	WED	THU	FRI	SAT
26	27	28	29	30	31	1
2	3	4	5	6	7	8
9	10	11	12	13	14	15
16	17	18	19	20	21	22
23	24	25	26	27	28	29
30	31					



### Learning Options

#### Blended Learning Environment (On-site)

#### Virtual Learning Environment (Online)

##### Location

- On-site assigned campus

##### Location

- Students remain a part of their assigned campus but participate virtually

##### Teacher

- Pine Bluff School District Teachers

##### Teacher

- Pine Bluff School District Teachers

##### Student Expectations

- Attend school daily
- Follow social distancing guidelines and adhere to seating charts
- Participate in blended learning using Edgenuity Learning Management System
- Complete formative and summative assessments
- Transition to virtual learning when required by the Pine Bluff School District (PBSB), AR Department of Health (ADH), Center for Disease Control (CDC), and the AR Division of Elementary and Secondary Education (DESE).
- Wear a face-covering or mask covering the nose and mouth (see "[How to Safely Wear and Take Off a Face-covering](#)").
- Make efforts to limit social interaction as required by ADH directives.

##### Student Expectations

- Engage appropriately in learning
- Demonstrate satisfactory progress in meeting learning goals
- Access digital content and assignments through Edgenuity Learning Management System
- Complete online formative and summative assessments as required.
- Complete all assignments and assessments by due dates.
- While virtual students will have some flexibility to work at their own pace within specific parameters, they must ensure they stay on track to complete all assignments by the end of the semester.

# Quality Instruction - Equal Access



## Learning Options

### Blended Learning Environment (On-site)

### Virtual Learning Environment (Online)

#### Parent Expectations

- Communicate with teachers
- Attend an orientation
- Monitor student progress toward learning goals
- Ensure daily attendance unless student is ill or under quarantine

#### Parent Expectations

- Communicate with teachers
- Attend a virtual orientation
- Monitor student progress toward learning goals
- Ensure student participation in online learning activities and assignments
- Create a learning space for the student and ensure the student has Wi-Fi access

#### Curriculum

- Core courses (i.e., math, science, ELA, history)
- Advanced Placement Courses (AP)
- Elective courses (foreign language, CTE, fine arts, etc.)
- Onsite Arkansas Athletic Association (AAA) activities

#### Curriculum

- Core courses (i.e., math, science, ELA, history)
- Advanced Placement Courses (AP)
- Elective courses (foreign language, CTE, fine arts, etc.)
- Access to onsite Arkansas Athletic Association (AAA) activities

#### Technology Needs

- Chromebook with camera, earbuds, and microphone for use in the classroom or when students are required to transition to virtual instruction
- Home Wi-Fi Internet connection or other internet option; Hot spots will be made available for families who need support with connectivity.
- Wifi buses in various locations

#### Technology Needs

- Chromebook with camera, earbuds, and microphone for use in the classroom or when students are required to transition to virtual instruction
- Home Wi-Fi Internet connection or other internet option; Hot spots will be made available for families who need support with connectivity.
- Wifi buses in various locations

#### Additional Student Supports

- PBSB Special Services will work with teachers and families to meet the needs of students with special needs
- Language supports will be provided to English Language Learners

#### Additional Student Supports

- PBSB Special Services will work with teachers and families to meet the needs of students with special needs
- Language supports will be provided to English Language Learners

# Quality Instruction - Equal Access



## Learning Options

### Blended Learning Environment (On-site)

### Virtual Learning Environment (Online)

#### Student Learning Experiences

- Students will use the Edgenuity Learning Management System (LMS) to engage in digital content designed to enhance their learning.
- Teachers will provide daily in-person instruction.
- Teachers will follow the Pine Bluff School District curriculum pacing calendars and will align the digital content accordingly.
- Teachers will check grades and monitor student progress regularly.
- Teachers will communicate with students and parents regarding progress.
- Students will transition to virtual learning as required by the Pine Bluff School District (PBSD), AR Department of Health (ADH), Center for Disease Control (CDC), and the AR Division of Elementary and Secondary Education (DESE).
- Efforts will be made to limit social interaction and mitigate health risks, including classroom arrangement and minimal transitions.

#### Student Learning Experiences

- Students will use the Edgenuity Learning Management System (LMS) to engage in digital content designed to enhance their learning.
- Teachers will ensure that daily instructional activities are provided for students.
- Teachers will follow the Pine Bluff School District curriculum pacing calendars and will align the digital content accordingly.
- Teachers will check grades and monitor student progress regularly.
- Teachers will communicate with students and parents regarding progress.
- Small group sessions led by the teacher via Zoom will support student learning.
- Students will be assigned a grade level teachers from their assigned campus.

## Other Supports & Services

### Blended Learning Environment (On-site)

### Virtual Learning Environment (Online)

#### Bus Transportation

- Bus transportation **IS** provided.
- Students will be screened and are required to wear a face-covering or mask that covers the nose **and** mouth.
- Students will be required to sit in assigned seats for social distancing purposes.

#### Bus Transportation

- Bus transportation is **NOT** provided in general, however may be provided for special services as needed.



# Quality Instruction - Equal Access

## Other Supports & Services

### Blended Learning Environment (On-site)

### Virtual Learning Environment (Online)

#### Health Services

- All staff, students, and visitors will be screened upon entry to buildings.
- All staff and students (Pre K - 12th grade) will wear a face covering or mask that covers the nose **and** mouth (One time supply of 5 face coverings/masks will be provided by the district to all staff and students).
- Frequent sanitation of surfaces and buildings
- Social distancing as feasible.
- Students and staff stay home when not feeling well and/or have been exposed to COVID-19.
- Students will be placed in isolation if becoming ill and a parent/guardian will be required to pick them up immediately.
- Contact tracing for staff and students who test positive for COVID-19 will be conducted by the ADH.
- Water fountains will not be in use.
- Students should bring clear refillable water bottles that can be filled at filling stations.



#### Health Services

- Virtual staff and students will be required to wear a face covering or mask covering the nose **and** mouth when on a PBSB campus for any reason.
- Virtual students and visitors will be required to social distance when on a PBSB campus for any reason.
- All staff, students, and visitors will be screened upon entry to buildings.
- Contact tracing will be conducted by ADH.

#### Food Services

- Breakfast will be served in classrooms.
- Lunch schedules may be modified and meals may be served in classrooms.
- All menu options may be modified.

#### Food Services

- Meals will be made available for pick-up.



# Sports & Extracurricular Activities

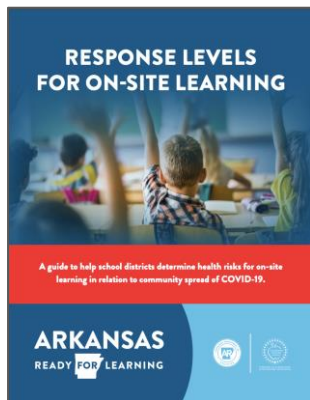
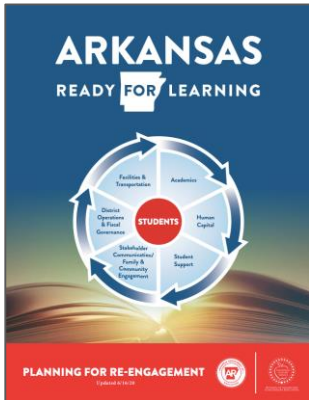


The Arkansas Activities Association is preparing to resume activities and athletics this fall/spring in accordance with the regular AAA calendar. These preparations are contingent upon compliance with all directives as issued by the Governor's Office and the Arkansas Department of Health

*In partnership with teachers, parents, and community, the Pine Bluff School District will provide quality educational opportunities that will enable scholars to reach their maximum potential, graduating college and career ready.*

## Information & Resources

Click the Icons Below for Helpful Links



Frequently Asked Questions



## Parent Learning Option Survey



Choose Your Student's Learning Option Here → <https://bit.ly/PBSDPlanning2020>

**Pine Bluff School District**

1215 W Pullen Ave.  
Pine Bluff, AR 71601  
Phone: 870-543-4200