

Houston County Schools

2013~2014





HOUSTON COUNTY SCHOOL SYSTEM 2013 - 2014 CALENDAR



DR. JAMES R. HINES, JR.
SUPERINTENDENT OF SCHOOLS

MISSION

Our mission to produce
high-achieving students.



VISION

Our vision is that our system
will be world class.

BELIEFS

- ☆ Safety is our number one priority.
- ☆ Failure is not an option. We do expect that all children can learn.
- ☆ We will not be satisfied until all of our schools meet or exceed the highest academic standards.
- ☆ We are committed to determining what each child needs to fulfill his potential.
- ☆ We take responsibility for learning, for both our students and ourselves.
- ☆ We are not afraid of change and will embrace change that is research-based and proven to be effective.

HOUSTON COUNTY BOARD OF EDUCATION

Dr. Marianne Melnick, Chairman
Mr. Fred Wilson, Vice-Chairman
Dr. Rick Unruh
Mr. Skip Dawkins
Mrs. Helen Hughes
Mr. Jim Maddox
Mr. Dave McMahan

Thanks for an artful job!

Many thanks to the following teachers
and student artists who contributed to
this calendar!



SCHOOLS

Matt Arthur Elementary

Bonaire Elementary

Hilltop Elementary

Lake Joy Primary

Miller Elementary

Parkwood Elementary

David Perdue Elementary

Tucker Elementary

Westside Elementary

Feagin Mill Middle

Huntington Middle

Warner Robins Middle

Houston County High

Perry High

Warner Robins High

TEACHERS

Karen Manion

Blake Johnsa

Nancy Gillies

Janet Dees

Ginny Childers

Katherine Wyatt

Mary May

Carolyn Childers

Peggy DeLoach

Laurie Kirkley

Torris Woolfolk

Paris Richardson

Melanie Peavy

Cathy Heller

Sara Bilcik

STUDENT ARTISTS

Dagan Harrell

Gracie Dawkins, Gabriella Ferguson, Danny Ferrer, Haley Jordan,
and Carlee Palmatier

Dylan Holley

Gelsy Pantoja and Samantha Reeves

Amara Goodman, Andrew Land, Keely Mansfield and Alan Ussery

McKenzie Arline, Kirsten Bowen, Kennedy Ross and Trey Wilson

Samantha Frazier, Nicholas Germundsen, Kristy Nguyen and Alora Phelps

Dylan Sapp and Destiny Wade

Ethan Crites

Mary Goodwin, Helen Ho and Marlie Opegard

Breanna McCrary

Madelyn Bush and Willie Rudolph

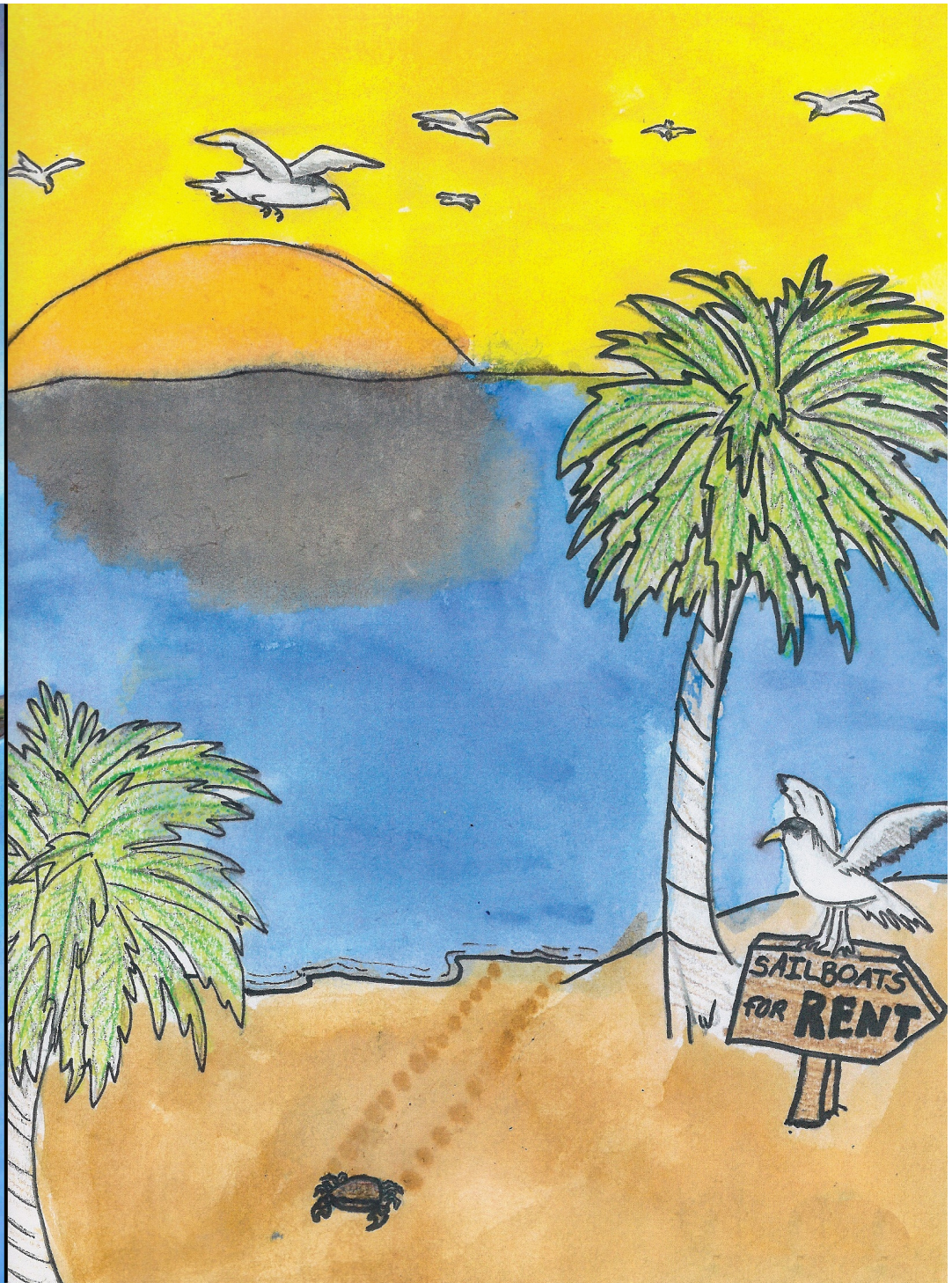
Bethany Fuss and Josh Bilbrey

Kimberly Barron, Janea Feeney, Liz Hardy, Steven Le, Tiffany Nance,
Savanna Plummer, Tiah Smith and Sarah Whiddon

Amy Eubanks, Joshua Matthews, Samantha Mullens and Shelby West



KRISTY NGUYEN ~ DAVID PERDUE ELEMENTARY



DANNY FERRER ~ BONAIRE ELEMENTARY

2013

JANUARY

S	M	T	W	T	F	S
	1	2	3	4	5	
6	7	8	9	10	11	12
13	14	15	16	17	18	19
20	21	22	23	24	25	26
27	28	29	30	31		

FEBRUARY

S	M	T	W	T	F	S
					1	2
3	4	5	6	7	8	9
10	11	12	13	14	15	16
17	18	19	20	21	22	23
24	25	26	27	28		

MARCH

S	M	T	W	T	F	S
					1	2
3	4	5	6	7	8	9
10	11	12	13	14	15	16
17	18	19	20	21	22	23
²⁹ / ₃₁	25	26	27	28	29	30

APRIL

S	M	T	W	T	F	S
	1	2	3	4	5	6
7	8	9	10	11	12	13
14	15	16	17	18	19	20
21	22	23	24	25	26	27
28	29	30				

MAY

S	M	T	W	T	F	S
			1	2	3	4
5	6	7	8	9	10	11
12	13	14	15	16	17	18
19	20	21	22	23	24	25
26	27	28	29	30	31	

JUNE

S	M	T	W	T	F	S
						1
2	3	4	5	6	7	8
9	10	11	12	13	14	15
16	17	18	19	20	21	22
²⁹ / ₃₀	24	25	26	27	28	29

JULY

S	M	T	W	T	F	S
	1	2	3	4	5	6
7	8	9	10	11	12	13
14	15	16	17	18	19	20
21	22	23	24	25	26	27
28	29	30	31			

AUGUST

S	M	T	W	T	F	S
				1	2	3
4	5	6	7	8	9	10
11	12	13	14	15	16	17
18	19	20	21	22	23	24
25	26	27	28	29	30	31

SEPTEMBER

S	M	T	W	T	F	S
	1	2	3	4	5	6
7	8	9	10	11	12	13
14	15	16	17	18	19	20
21	22	23	24	25	26	27
28	29	30				

OCTOBER

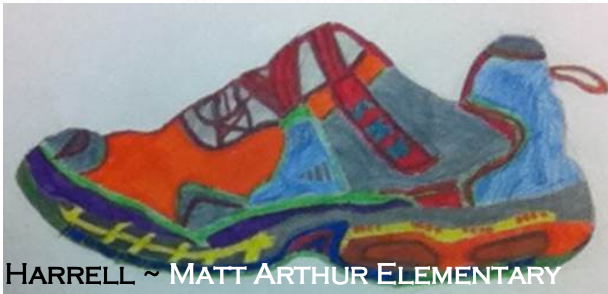
S	M	T	W	T	F	S
	1	2	3	4	5	
6	7	8	9	10	11	12
13	14	15	16	17	18	19
20	21	22	23	24	25	26
27	28	29	30	31		

NOVEMBER

S	M	T	W	T	F	S
					1	2
3	4	5	6	7	8	9
10	11	12	13	14	15	16
17	18	19	20	21	22	23
24	25	26	27	28	29	30

DECEMBER

S	M	T	W	T	F	S
	1	2	3	4	5	6
7	8	9	10	11	12	13
14	15	16	17	18	19	20
21	22	23	24	25	26	27
28	29	30	31			



DAGAN HARRELL ~ MATT ARTHUR ELEMENTARY

2014

JANUARY

S	M	T	W	T	F	S
			1	2	3	4
5	6	7	8	9	10	11
12	13	14	15	16	17	18
19	20	21	22	23	24	25
26	27	28	29	30	31	

FEBRUARY

S	M	T	W	T	F	S
						1
2	3	4	5	6	7	8
9	10	11	12	13	14	15
16	17	18	19	20	21	22
23	24	25	26	27	28	

MARCH

S	M	T	W	T	F	S
						1
2	3	4	5	6	7	8
9	10	11	12	13	14	15
16	17	18	19	20	21	22
²⁹ / ₃₀	²⁹ / ₃₁	25	26	27	28	29

APRIL

S	M	T	W	T	F	S
	1	2	3	4	5	
6	7	8	9	10	11	12
13	14	15	16	17	18	19
20	21	22	23	24	25	26
27	28	29	30			

MAY

S	M	T	W	T	F	S
				1	2	3
4	5	6	7	8	9	10
11	12	13	14	15	16	17
18	19	20	21	22	23	24
25	26	27	28	29	30	31

JUNE

S	M	T	W	T	F	S
	1	2	3	4	5	6
7	8	9	10	11	12	13
14	15	16	17	18	19	20
21	22	23	24	25	26	27
28	29	30				

JULY

S	M	T	W	T	F	S
	1	2	3	4	5	
6	7	8	9	10	11	12
13	14	15	16	17	18	19
20	21	22	23	24	25	26
27	28	29	30	31		

AUGUST

S	M	T	W	T	F	S
					1	2
3	4	5	6	7	8	9
10	11	12	13	14	15	16
17	18	19	20	21	22	23
²⁹ / ₃₁	25	26	27	28	29	30

SEPTEMBER

S	M	T	W	T	F	S
	1	2	3	4	5	6
7	8	9	10	11	12	13
14	15	16	17	18	19	20
21	22	23	24	25	26	27
28	29	30				

OCTOBER

S	M	T	W	T	F	S
	1	2	3	4		
5	6	7	8	9	10	11
12	13	14	15	16	17	18
19	20	21	22	23	24	25
26	27	28	29	30	31	

NOVEMBER

S	M	T	W	T	F	S
						1
2	3	4	5	6	7	8
9	10	11	12	13	14	15
16	17	18	19	20	21	22
²⁹ / ₃₀	24	25	26	27	28	29

DECEMBER

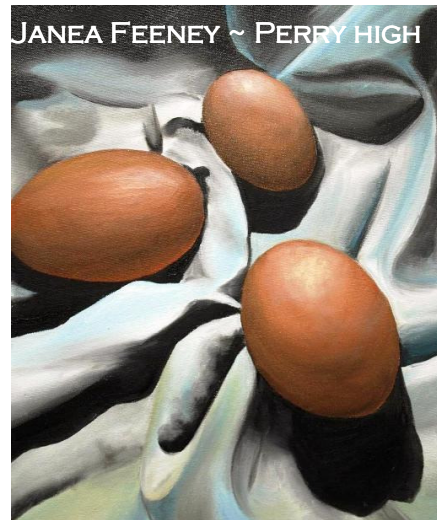
S	M	T	W	T	F	S
	1	2	3	4	5	6
7	8	9	10	11	12	13
14	15	16	17	18	19	20
21	22	23	24	25	26	27
28	29	30	31			



ANDREW LAND ~ MILLER ELEMENTARY



SHELBY WEST ~ WARNER ROBINS HIGH



JANEA FEENEY ~ PERRY HIGH

August 2013

Mon	Tue	Wed	Thu	Fri	Sat
			1 First Day of School <i>GKIDS Begins</i>	2 Day 2	3
	Pre-Planning (5 days total)			Day 7	
4	5	6	7	8	9 Day 7
11 <i>Character Trait: Responsibility</i>	12 BOE Work Session, 6:30 p.m., PBO	13 BOE Meeting, 1:00 p.m., PBO	14	15 Supt. Meeting, 9:00 a.m., Ragin Center	16 17
18 <i>Character Trait: Punctuality</i>	19	20	21	22	
25 <i>Character Trait: Courtesy</i>	26	27	28	29	



SAMANTHA MULLENS ~ WARNER ROBINS HIGH



MARLIE OPPEGARD ~ FEAGIN MILL MIDDLE



MARY GOODWIN ~ FEAGIN MILL MIDDLE

September 2013

Sun	Mon	Tue	Wed	Thu	Fri	Sat
1 <i>Character Trait:</i> Diligence	2 Labor Day Holiday	3 <i>GAA Begins</i>	4 <i>ES/MS Progress Reports</i>	5	6 Day 26	7
8 Grandparent's Day <i>Character Trait:</i> School Pride	9 BOE Work Session, 6:30 p.m., PES	10 BOE Meeting, 1:00 p.m., PBO	11 Patriot Day <i>HS Progress Reports</i>	12 Supt. Meeting, 9:00 a.m., Ragin Center	13	14
	GHSgt Fall Retest					Day 31
15 <i>Character Trait:</i> Courage	16	17 Constitution Day	18	19	20	21
	Mid-Month EOCT					Day 36
22 Autumn Begins <i>Character Trait:</i> Cooperation	23	24	25 <i>GHSWT</i>	26 <i>GHSWT Makeup</i>	27 Day 41	
29 <i>Character Trait:</i> Self-Respect	30					

KIMBERLY BARRON ~ PERRY HIGH





STEVEN LE ~ PERRY HIGH

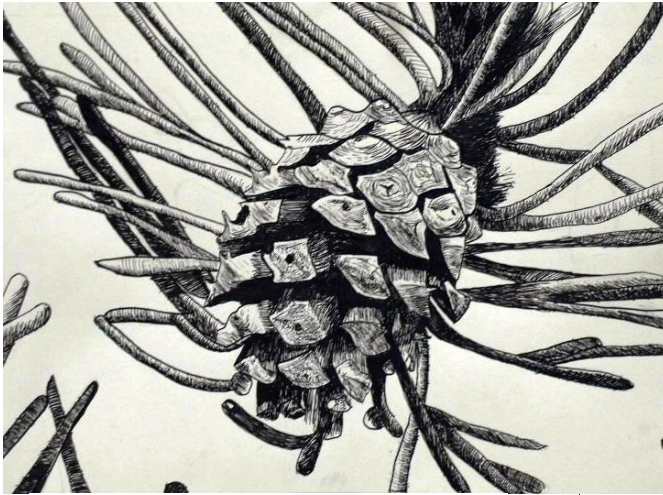
October 2013

Sun	Mon	Tue	Wed	Thu	Fri	Sat
Physical Therapy Month National Principals Month		1 FTE Count	2	3	4 Day 46	5
6 Fire Prevention week	7	8	9	10	11 Columbus Day Holiday Observed	12
	Fall Break					
13 School Lunch Week <i>Character Trait: Citizenship</i>	14 Columbus Day Prof. Learning/Parent Conf./Student Holiday	15	16 PSAT ES/MS Report Cards Boss' Day Med. Tech. Appreciation Day	17	18 Day 50	19
20 School Bus Safety Week <i>Character Trait: Generosity</i>	21 BOE Work Session, 6:30 p.m., PSES	22 BOE Meeting, 1:00 p.m., PBO	23 Red Ribbon Week	24	25 Supt. Meeting, 9:00 a.m., Ragin Center Picnic to follow	26
	ITBS & Make-up, Grades 2, 4 & 6					
	Mid-Month EOCT					
27 <i>Character Trait: Kindness</i>	28 Bus Driver Appreciation Day HS Progress Reports	29	30 HS Progress Reports	31 Day 59		






TREY WILSON ~ PARKWOOD ELEMENTARY



November 2013

		Tue		Wed		Thu		Fri		Sat	
								1		2	
TIFFANY NANCE ~ PERRY HIGH								Day 60			
3 Daylight Saving Time Ends Character Trait: Compassion		4 Custodian Appreciation Day		5 Election Day		6		7		8	
										9	



TIAH SMITH ~ PERRY HIGH

December 2013

Sun	Mon	Tue	Wed	Thu	Fri	Sat
1	2	3	4	5	6 Day 79	7
8 <i>Character Trait: Fairness</i>	9 BOE Work Session, 6:30 p.m., DPES	10 BOE Meeting, 1:00 p.m., PBO	11	12 Supt. Meeting, 9:00 a.m., Ragin Center Christmas lunch in schools	13	14
					Day 84	
15 Bill of Rights Day	16	17	18	19	20 Last day of 1st Semester	21 First Day of Winter
22	23	24	25 Christmas	26	27 Day 89	
29	30	31				
	Christmas Holiday					





JOSH BILBREY ~ HOUSTON COUNTY HIGH



January 2014

BREANNA MCCRARY ~ HUNTINGTON MIDDLE

Tue		Wed		Thu		Fri		Sat
		1 New Year's Day		2 <div>Christmas Holiday</div>		3 Teacher Work Day, Student Holiday		4
5 <i>Character Trait:</i> Sportsmanship	6 2nd Semester Begins Day 90	7		8		9 10 <i>ES/MS/HS Report Cards</i> <i>GKIDS DOE Check-point</i> Day 94		11
12 <i>Character Trait:</i> Respect for Others	13 BOE Work Session, 6:30 p.m., DPPS	14 BOE Meeting, 1:00 p.m., PBO		15		16 Supt. Meeting, 9:00 a.m., Ragin Center		17 Day 99
19 <i>Character Trait:</i> Loyalty	20 Martin Luther King, Jr. Holiday	21 <i>ACCESS for ELLs</i> Day 100		22 8th Grade Writing Assessment		23 8th Grade Writing Assessment Make-up		24 Day 103
26 <i>Character Trait:</i> Creativity	27 NAEP Begins	28		29		30		31 Day 108
				<div>Mid-Month EOCT</div>				



AMARA GOODMAN ~ MILLER ELEMENTARY



KEELY MANSFIELD ~ MILLER ELEMENTARY

February 2014

Sun	Mon	Tue	Wed	Thu	Fri	Sat
Black History Month CTAE Month American Heart Month Children's Dental Health Month						1
2 School Counseling Week Groundhog Day <i>Character Trait:</i> Honesty	3	4	5	6	7 <i>ES/MS Progress Reports</i> Day 113	8
9 FCCLA Week <i>Character Trait:</i> Virtue	10 BOE Work Session, 6:30 p.m., PHS	11 BOE Meeting, 1:00 p.m., PBO	12 <i>HS Progress Reports</i>	13 Supt. Meeting, 9:00 a.m., Ragin Center	14	15
	Mid-Month EOCT				Day 118	
16 FFA Week	17 Presidents' Day Holiday	18 Winter Holiday	19 Prof. Learning/ Student Holiday	20	21 Day 120	
23 <i>Character Trait:</i> Patience	24	25	26 <i>GHSWT Retest</i>	27 <i>GHSWT Retest Make-up</i>	28 Day 125	



AMY EUBANKS ~ WARNER ROBINS HIGH

March 2014

Sun	Mon	Tue	Wed	Thu	Fri	Sat
Exceptional Children's Month Music in our Schools Month	Youth Art Month Social Work Month					1
2 <i>Character Trait: Perseverance</i>	3 Read Across America School Breakfast Week	4	5 5th Grade Writing Assessment	6 FTE Count 5th Grade Writing Assessment Make-up	7	8
Mid-Month EOCT						
9 Daylight Saving Time Begins <i>Character Trait: Respect for Environment</i>	10 BOE Work Session, 6:30 p.m., PMS	11 BOE Meeting, 1:00 p.m., PBO Parapro Day	12	13 Supt. Meeting, 9:00 a.m., Ragin Center	14 Day 130	15
16	17 3rd Grade Writing Assessment	18	19	20 1st Day of Spring	21 ES/MS Report Cards Day 135	22 Teacher Recruiting Fair, VHS
GHSGT						
23 <i>Character Trait: Cleanliness</i>	24	25	26	27	28 GAA Ends 3rd Grade Writing Assessment Ends Day 145	29
30	31 Spring Break					





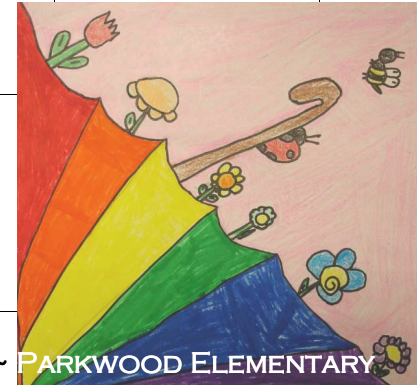
SAMANTHA FRAZIER ~ DAVID PERDUE ELEMENTARY



US AIR FORCE AWACS CREW ON DEPLOYMENT

April 2014

Sun	Mon	Tue	Wed	Thu	Fri	Sat
Month of the Military Child Occupational Therapy Awareness Month		1	2	3	4	5
	Spring Break					
6 <i>Character Trait: Self-Control</i>	7 BOE Work Session, 6:30 p.m., PPS	8 BOE Meeting, 1:00 p.m., PBO	9 <i>HS Progress Reports</i>	10 Supt. Meeting, 9:00 a.m., Ragin Center	11 <i>CRCT - M Make-up</i> Day 150	12
		CRCT ~ M				
13 Library Week	14 <i>CRCT - M Make-up</i>	15	16	17	18 Day 155	19
20 Easter <i>Character Trait: Cheerfulness</i>	21	22 Earth Day	23 Administrative Professionals' Day	24 <i>ES/MS Progress Reports</i>	25 Gifted Education Day Arbor Day Day 160	26 Prom
27	28	29	30	1	2	
	EOCT					
					Day 165	



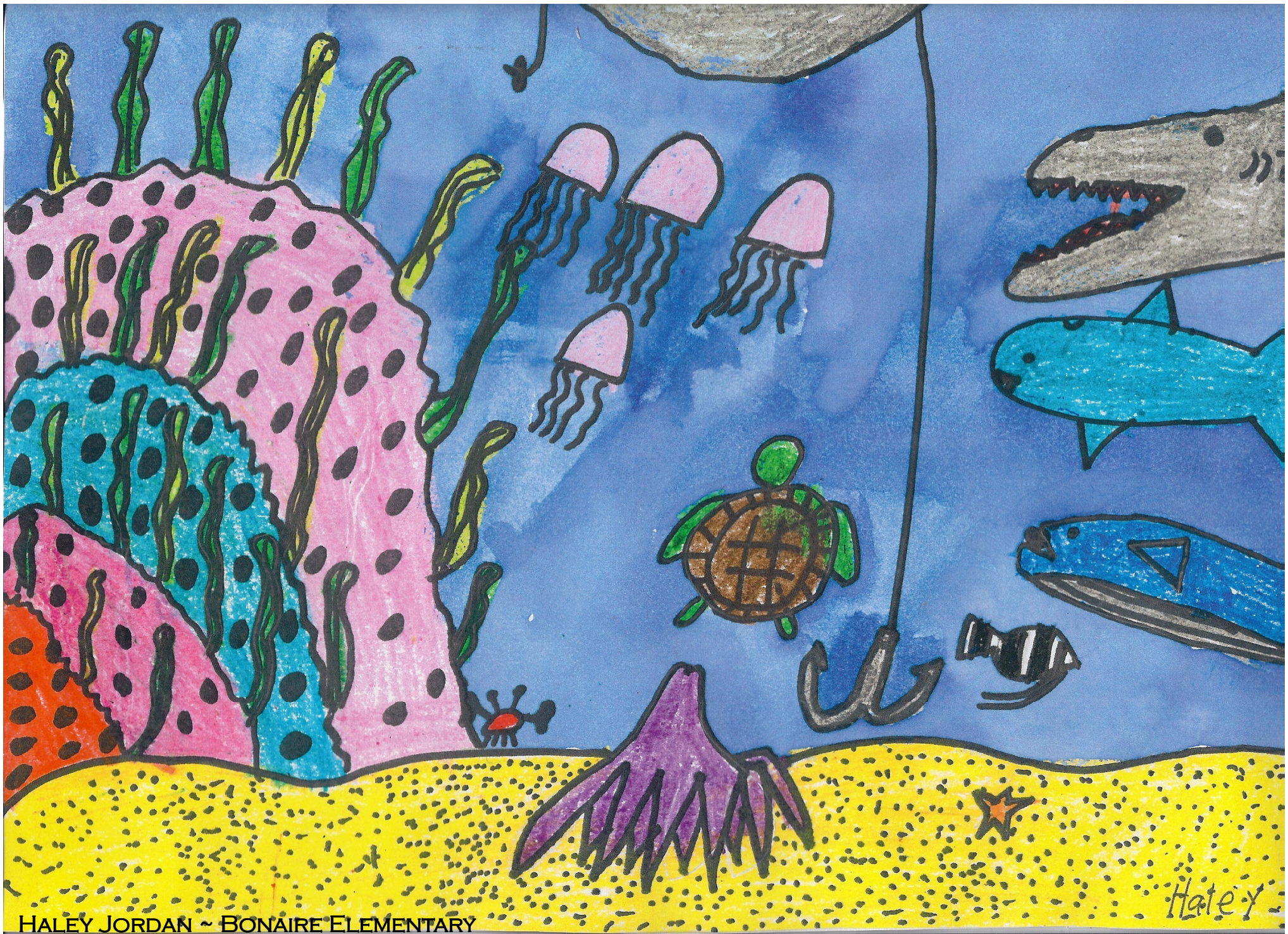


TIAH SMITH ~ PERRY HIGH

May 2014

MADelyn BUSH ~ WARNER ROBINS MIDDLE

Sun	Mon	Tue	Wed	Thu	Fri	Sat
Better Hearing & Speech Month				1 <i>GKIDS Begins</i>	2 Day 165	3
4 Teacher Appreciation Week Music Week	5 <i>AP Exams Begin</i>	6 Teacher Day	7	8 School Nurse Appreciation Day	9 <i>GKIDS Ends</i> Day 170	10
	EOCT Make-up					
11 Police (SRO) Week Children's Book Week	12 BOE Work Session, 6:30 p.m., QRES	13 BOE Meeting, 1:00 p.m., PBO BOE Retirement Banquet	14	15 Supt. Meeting, 9:00 a.m., Ragin Center	16 <i>AP Exams End</i> Day 175	17 Armed Forces Day
18	19	20	21	22	23 Last Day of School - Day 180 <i>ES Report Cards</i> Graduation: HCCA, 6:00 p.m. WRHS, 8:00 p.m.	24 Graduation: VHS, 9:00 a.m. PHS, 12:00 p.m. HCHS, 3:00 p.m. NHS, 6:00 p.m.
	CRCT & CRCT-M Retest			Day 179		
25	26 Memorial Day Holiday	27 Post-Planning	28 Post-Planning <i>MS/HS Report Cards</i>	29	30	31



HALEY JORDAN ~ BONAIRE ELEMENTARY

Haley

June 2014


Sun	Mon	Tue	Wed	Thu	Fri	Sat
1	2	3	4	5	6	7
8	9 BOE Work Session, 6:30 p.m., PBO	10 BOE Meeting, 1:00 p.m., PBO	11	12	13	14
15	16	17	18	19	20	21
	EOCT Retest, June 16-20					
22	23	24	25	26		
29	30					





GELSY PANTOJA ~ LAKE JOY PRIMARY

July 2014

Sun	Mon	Tue	Wed	Thu	Fri	Sat
		1	2	3	4	5
6	7	8	9	10		
13	14	15	16	17		
20	21	22	23	24		
27	28	29	30	31		



JOSHUA MATTHEWS ~ WARNER ROBINS HIGH



SYSTEM TEST SCHEDULE 2013 - 2014



GRACIE DAWKINS ~ BONAIRE ELEMENTARY

September 3
September 9 - 13
September 16 - 20
September 16
September 25
September 26
October 16
October 21 - 25
November 4 - 8
November 18 - 22
December 2
December 9 - 13

January 6 - March 28
January 21 - March 4
January 22
January 23
January 27 - 31
January 27 - March 7
February 10 - 14
February 24 - March 14
February 26
February 27
March 3 - 7
March 5
March 6
March 17 - 28
March 17 - 21
April 8 - 10
April 11 and 14
April 14 - 18
April 21 - 24
April 28 - May 2
May 5 - 6
May 5 - 16
May 5 - 23
May 19 - 22
July 14 - 18
July 16

2013

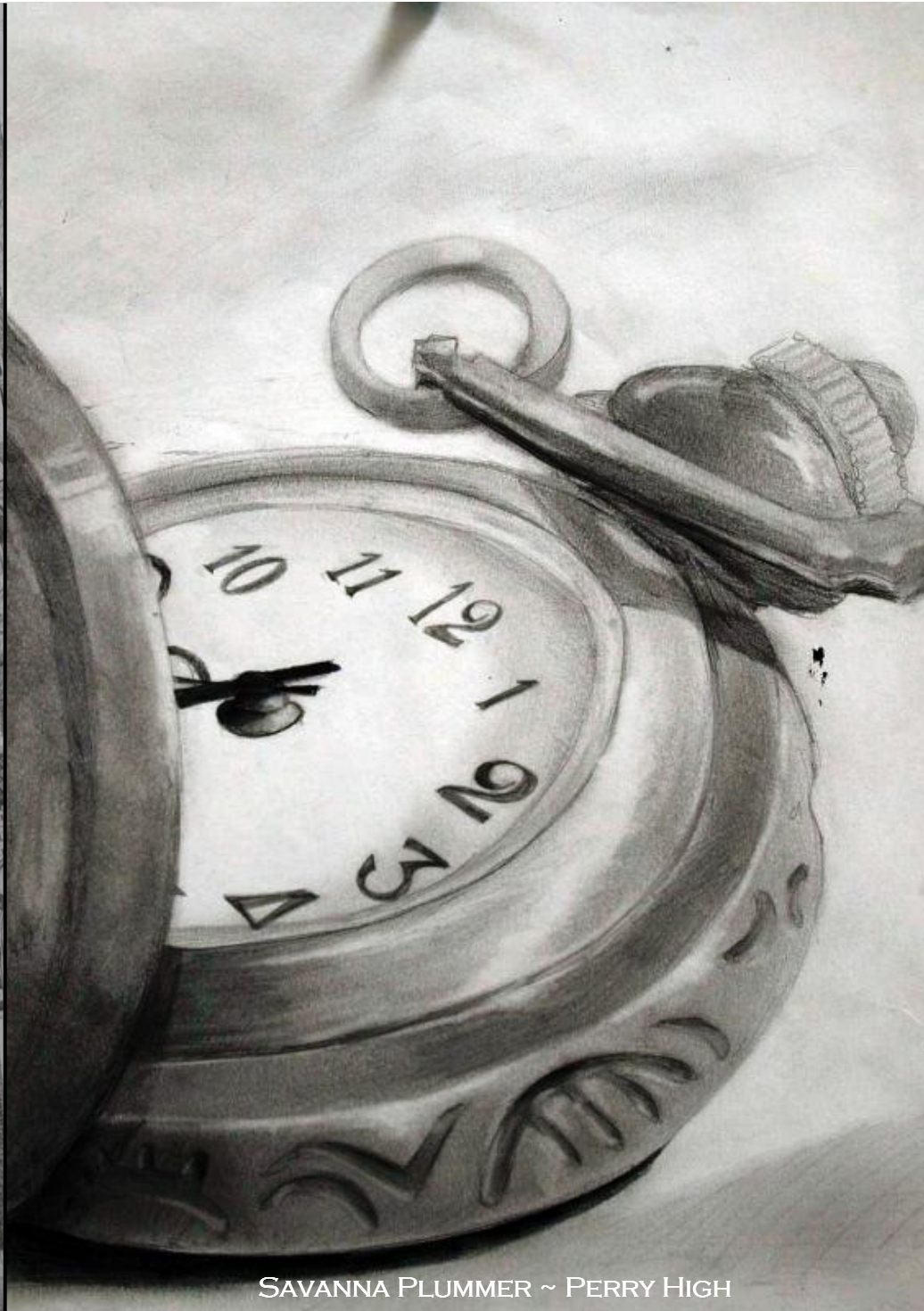
GAA Begins
GHS GT Fall Retest
Mid-Month EOCT
8th Grade Technology Literacy Exam
GHSWT
GHSWT Make-up
PSAT
Mid-Month EOCT
GHS GT Retest
Mid-Month EOCT
8th Grade Technology Literacy Exam
EOCT

2014

GAA Retest
ACCESS for ELLs
8th Grade Writing Assessment
8th Grade Writing Assessment Make-up
Mid-Month EOCT
NAEP
Mid-Month EOCT
8th Grade Technology Literacy Exam
GHSWT Retest
GHSWT Retests and Make-up
Mid-Month EOCT
5th Grade Writing Assessment
5th Grade Writing Assessment Make-up
3rd Grade Writing Evaluation
GHS GT
CRCTM
CRCTM Make-up
CRCT
CRCT Make-up
EOCT
EOCT Make-up
AP Exams
8th Grade Technology Literacy Exam
CRCT and CRCTM Retest
GHS GT Retest
GHSWT Retest



BETHANY FUSS ~ HOUSTON COUNTY HIGH



SAVANNA PLUMMER ~ PERRY HIGH

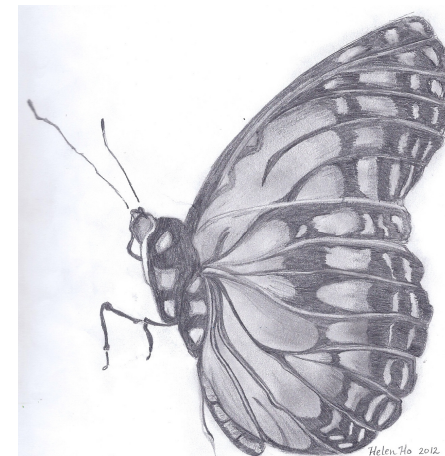


REPORT CARD DATES, 2013 - 2014



ELEMENTARY SCHOOLS - ISSUED EVERY NINE WEEKS (ABOUT 45 DAYS)

NINE WEEKS PERIOD	END DATE	DATE REPORTS ISSUED
Progress Report, Day 22	August 30	September 4
1 st 9 Weeks, Day 44	October 3	October 16
Progress Report, Day 67	November 13	November 15
2 nd 9 Weeks, Day 89	December 20	January 10
Progress Report, Day 111	February 5	February 7
3 rd 9 Weeks, Day 135	March 14	March 21
Progress Report, Day 157	April 22	April 24
4 th 9 Weeks, Day 180	May 23	May 23



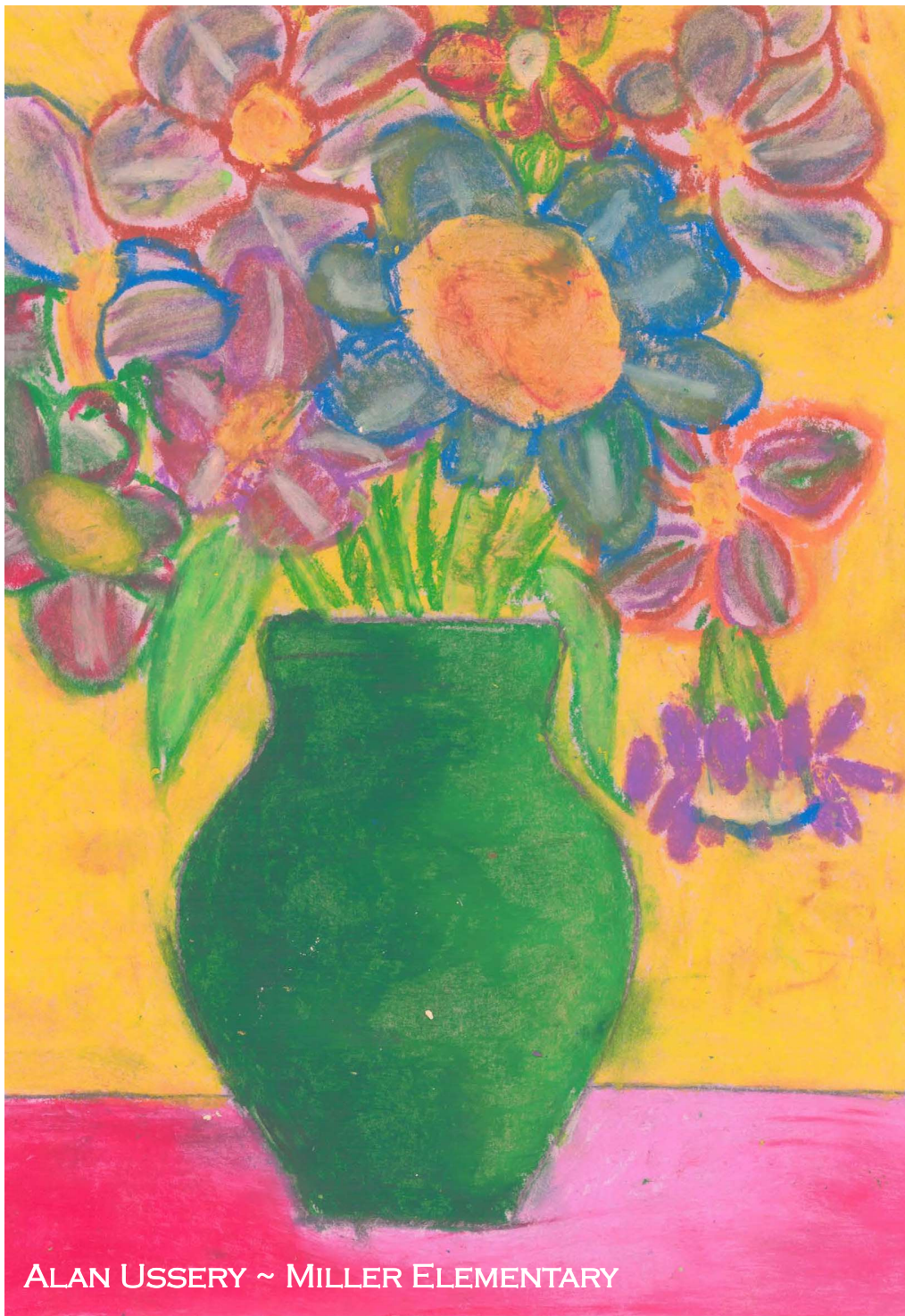
HELEN HO ~ FEAGIN MILL MIDDLE

MIDDLE SCHOOLS - ISSUED EVERY NINE WEEKS (ABOUT 45 DAYS) WITH PROGRESS REPORTS ISSUED MID-WAY

NINE WEEKS PERIOD	END DATE	DATE REPORTS ISSUED
Progress Report, Day 22	August 30	September 4
1 st 9 Weeks, Day 45	October 3	October 16
Progress Report, Day 67	November 13	November 15
2 nd 9 Weeks, Day 89	December 20	January 10
Progress Report, Day 111	February 5	February 7
3 rd 9 Weeks, Day 135	March 14	March 21
Progress Report, Day 157	April 22	April 24
4 th 9 Weeks, Day 180	May 23	May 28

HIGH SCHOOLS — ISSUED EVERY 18 WEEKS AT THE END OF THE SEMESTER (ABOUT 90 DAYS), WITH PROGRESS REPORTS ISSUED AT 6 AND 12 WEEKS

SEMESTERS	END DATE	DATE REPORTS ISSUED
Progress Report 1.1, Day 29	September 9	September 11
Progress Report 1.2, Day 58	October 28	October 30
End 1 st Semester, Day 89	December 20	January 10
Progress Report 2.1, Day 115	February 10	February 12
Progress Report 2.2, Day 149	April 7	April 9
End 2 nd Semester, Day 180	May 23	May 28



ALAN USSERY ~ MILLER ELEMENTARY



KIRSTEN BOWEN ~ PARKWOOD ELEMENTARY



HOUSTON COUNTY SCHOOL SYSTEM CALENDAR 2013 – 2014



2013

July 25 - 31, 2013	Thursday - Wednesday	Pre-Planning/Professional Learning
August 1, 2013	Thursday	First Day of School
September 2, 2013	Monday	Labor Day Holiday
October 7-10, 2013	Monday - Thursday	Fall Holiday, Student and Teachers
October 11, 2013	Friday	Columbus Day Holiday Observed
October 14, 2013	Monday	Professional Learning/Parent Conference, Student Holiday
November 11, 2013	Monday	Veterans Day Holiday
November 25 - 29, 2013	Monday - Friday	Thanksgiving Holiday
December 20, 2013	Friday	Last Day of Semester
December 23 - January 2, 2014		Christmas Holiday

2014

January 3, 2014	Wednesday	Teacher Work Day, Student Holiday
January 6, 2014	Monday	Second Semester Begins
January 20, 2014	Monday	Martin Luther King Holiday
February 17, 2014	Monday	Presidents' Day Holiday
February 18, 2014	Tuesday	Winter Holiday, Students and Teachers
February 19, 2014	Wednesday	Professional Learning/Student Holiday
March 31 - April 4, 2014	Monday - Friday	Spring Break
May 9, 2014	Friday	Last Day of School for Pre-K
May 23, 2014	Friday	Last Day of School for K-12
May 26, 2014	Monday	Memorial Day Holiday
May 23 - 24, 2014	Friday & Saturday	High School Graduation
May 27 - 28, 2014	Tuesday & Wednesday	Post Planning



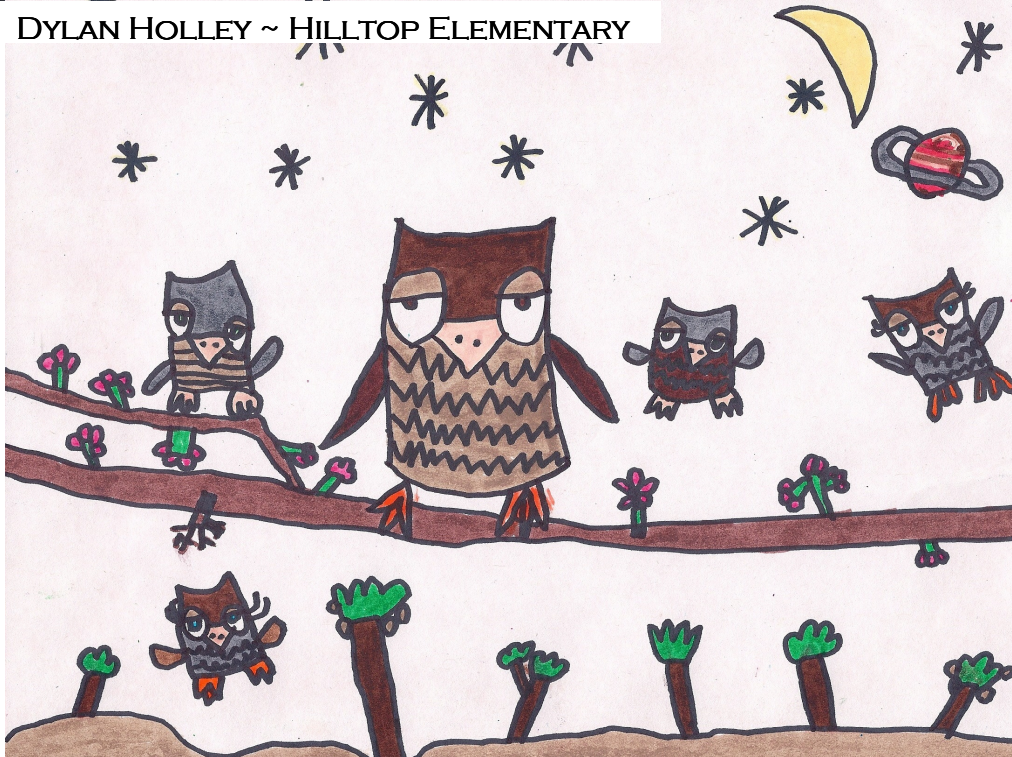
GABRIELLA FERGUSON ~ BONAIRE ELEMENTARY



DYLAN SAPP ~ TUCKER ELEMENTARY



DYLAN HOLLEY ~ HILLTOP ELEMENTARY



ETHAN CRITES ~ WESTSIDE ELEMENTARY





2013 – 2014 HOUSTON COUNTY SCHOOLS – P.O. BOX 1850, PERRY, GA 31069



Houston County Schools, 2013-2014

1100 Main Street, Perry Georgia 31069 ~ (478) 988-6200 ~ www.hcbe.net ~ <https://www.facebook.com/HoustonCountySS>

Elementary Schools	Grades	Phone (478)	Address	City	Zip Code	Principal	E-mail
Matt Arthur Elementary	Pre K - 5	988-6170	2500 Highway 127	Kathleen	31047	Mr. Ricky Rogers	Richard.Rogers@hcbe.net
Bonaire Elementary	Pre K - 5	929-7826	101 Elm Street	Bonaire	31005	Mr. Willis Jones	Jessie.Jones@hcbe.net
Centerville Elementary	Pre K - 5	953-0400	450 Houston Lake Boulevard	Centerville	31028	Mrs. Tonya Maddox	Tonya.Maddox@hcbe.net
Eagle Springs Elementary	Pre K - 5	953-0450	3591 Highway 41 North	Byron	31008	Dr. Andrea McGee	Andrea.McGee@hcbe.net
Hilltop Elementary	Pre K - 5	929-6113	301 Robert Bryson Smith Pky	Bonaire	31005	Mr. Dave Crockett	Dave.Crockett@hcbe.net
Kings Chapel Elementary	Pre K - 5	988-6273	460 Arena Road	Perry	31069	Mrs. Paulette Tompkins	Paulette.Tompkins@hcbe.net
Lake Joy Elementary	3 - 5	971-2712	985 Lake Joy Road	Warner Robins	31088	Dr. Douglas Rizer	Douglas.Rizer@hcbe.net
Lake Joy Primary	Pre K - 2	953-0465	995 Lake Joy Road	Warner Robins	31088	Dr. April Strevig	April.Strevig@hcbe.net
Lindsey Elementary	Pre K - 5	929-7818	81 Tabor Drive	Warner Robins	31093	Mrs. Angelique Archie	Angelique.Archie@hcbe.net
Linwood at C.B. Watson Primary	Pre K - 5	929-6360	61 Martin Luther King Jr. Blvd.	Warner Robins	31088	Dr. Amanda Brantley	Amanda.Brantley@hcbe.net
Miller Elementary	Pre K - 5	929-7814	101 Pine Valley Drive	Warner Robins	31088	Dr. Gwen Pearson-Kilgore	Gwen.Kilgore@hcbe.net
Morningside Elementary	2 - 5	988-6261	1206 Morningside Drive	Perry	31069	Dr. Patricia Witt	Pat.Witt@hcbe.net
Northside Elementary	Pre K - 5	929-7816	305 Sullivan Road	Warner Robins	31093	Mrs. Jodi Clark	Jodi.Clark@hcbe.net
Parkwood Elementary	Pre K - 5	929-7822	503 Parkwood Drive	Warner Robins	31093	Dr. Janet Sorrell	Janet.Sorrell@hcbe.net
David Perdue Elementary	3 - 5	988-6350	115 Sutherlin Drive	Warner Robins	31088	Mrs. Shawn Carpenter	Shawn.Carpenter@hcbe.net
David Perdue Primary	Pre K - 2	218-7500	150 Bear Country Boulevard	Warner Robins	31088	Ms. Leslie Shultz	Leslie.Shultz@hcbe.net
Perry Primary	Pre K - 1	988-6160	1530 Sunshine Avenue	Perry	31069	Dr. Elgin Mayfield	Elgin.Mayfield@hcbe.net
Quail Run Elementary	Pre K - 5	953-0415	250 Smithville Church Road	Warner Robins	31088	Dr. Cheryl Thomas	Cheryl.Thomas@hcbe.net
Russell Elementary	Pre K - 5	929-7830	101 Patriot Way	Warner Robins	31088	Mrs. Jo Hall	Jo.Hall@hcbe.net
Shirley Hills Elementary	Pre K - 5	929-7824	300 Mary Lane	Warner Robins	31088	Dr. Traci Jackson	Traci.Jackson@hcbe.net
Pearl Stephens Elementary	Pre K - 5	929-7895	215 Scott Blvd.	Warner Robins	31088	Dr. Deborah Moore-Sanders	Deborah.Sanders@hcbe.net
Tucker Elementary	2 - 5	988-6278	1300 Tucker Road	Perry	31069	Dr. Kim Halstead	Kimberly.Halstead@hcbe.net
Westside Elementary	Pre K - 5	929-7820	201 North Pleasant Hill Road	Warner Robins	31093	Dr. Cynthia Hammond	Cynthia.Hammond@hcbe.net
Middle Schools	Grades	Phone (478)	Address	City	Zip Code	Principal	E-mail
Bonaire Middle	6 - 8	929-6235	125 Highway 96 East	Bonaire	31005	Mrs. Cindy Randall	Cindy.Randall@hcbe.net
Feagin Mill Middle	6 - 8	953-0430	1200 Feagin Mill Road	Warner Robins	31088	Dr. Jesse Davis	Jesse.Davis@hcbe.net
Huntington Middle	6 - 8	542-2240	206 Wellborn Road	Warner Robins	31088	Dr. Gwendolyn Taylor	Gwendolyn.Taylor@hcbe.net
Mossy Creek Middle	6 - 8	988-6171	200 Danny Carpenter Drive	Kathleen	31047	Dr. Andy Gentry	Andy.Gentry@hcbe.net
Northside Middle	6 - 8	929-7845	500 Johnson Road	Warner Robins	31093	Mr. Jan Melnick	Jan.Melnick@hcbe.net
Perry Middle	6 - 8	988-6285	495 Perry Parkway	Perry	31069	Mr. Thomas Moore	Thomas.Moore@hcbe.net
Thomson Middle	6 - 8	953-0489	301 Thomson Street	Centerville	31028	Dr. Walter Stephens	Walter.Stephens@hcbe.net
Warner Robins Middle	6 - 8	929-7832	425 Mary Lane	Warner Robins	31088	Mr. Brett Wallace	Brett.Wallace@hcbe.net
High Schools	Grades	Phone (478)	Address	City	Zip Code	Principal	E-mail
HC Career Academy	9 -12	322-3280	1311 Corder Road	Warner Robins	31088	Mrs. Sabrina Phelps	Sabrina.Phelps@hcbe.net
Houston County High	9 -12	988-6340	920 Highway 96	Warner Robins	31088	Dr. Michelle Masters	Michelle.Masters@hcbe.net
Northside High	9 -12	929-7858	926 Green Street	Warner Robins	31093	Dr. Greg Peavy	Greg.Peavy@hcbe.net
Perry High	9 -12	988-6298	1307 North Avenue	Perry	31069	Dr. Darryl Albritton	Darryl.Albritton@hcbe.net
Veterans High	9 -12	218-7537	340 Piney Grove Road	Kathleen	31047	Dr. Lionel Brown	Lionel.Brown@hcbe.net
Warner Robins High	9 -12	929-7877	401 South Davis Drive	Warner Robins	31088	Mr. Steve Monday	Steve.Monday@hcbe.net
Alternative School	Grades	Phone (478)	Address	City	Zip Code	Principal	E-mail
HC Crossroads Center	6 -12	929-7828	303 South Davis Drive	Warner Robins	31088	Dr. Ronnie Walker	Ronnie.Walker@hcbe.net
Credit Recovery	Grades	Phone (478)	Address	City	Zip Code	Lead Administrator	E-mail
Edge Academy	9-12	929-7801	400 Elberta Road	Warner Robins	31093	Dr. Shirley Randall	Shirley.Randall@hcbe.net

Houston County Schools, 2013-2014 SYSTEM Administrative Meetings Calendar

* Please note that dates are subject to change should a conflict arise!

Date	Meeting	Time	Site
JULY 2013			
JULY 1-5 HOLIDAYS FOR 12 MONTH STAFF			
JUL 8	Executive Cabinet - CO	8:00 AM	Sm Conf
JUL 8	BOE Work Session	6:30 PM	CO
JUL 9	BOE MEETING	1:00 PM	CO
JUL 14-17, 2013 - 39th Summer GAEL, Jekyll Island, Georgia			
JUL 18	THU - SUPERINTENDENT'S MTG	9:00 AM	Ragin Ctr
JUL 18	Elem/Mid/High Principals Breakout Mtgs to Follow		
JUL 19	New Teacher Orientation	8:00-Noon	PMS
JUL 22	BOE Financial Workshop	8:00 AM	Board Rm
JUL 24	AP Meeting	8:00-11:00	Ragin Ctr
JUL 25 - Opening Session: Miller-Murphy-Howard Building			
JUL 30	Site-Based Professional Learning/ Bd Retreat with Exec. Cabinet		
JUL 25-31 Pre-Planning			

AUGUST 2013			
Thursday, August 1, 2013 - First Day of School			
AUG 7	Executive Cabinet	8:00 AM	Sm Conf
AUG 12	FULL CABINET	8:00 AM	CO Upstairs
AUG 12	BOE Work Session	6:30 PM	CO
AUG 13	BOE MEETING	1:00 PM	CO
AUG 15	THU - SUPERINTENDENT'S MTG	9:00 AM	Ragin Ctr
AUG 15	Elem/Mid/High Principals Breakout Mtgs to Follow		
AUG 16	APs Meeting	8:00-12:00	Ragin Ctr
AUG 20	School Improvement Presentations		CO Upstairs
AUG 22	School Improvement Presentations		CO Upstairs
AUG 23	School Improvement Presentations		CO Upstairs
AUG 27	Principals - TKES Training Day 1		
AUG 28	APs - TKES Training Day 1		
AUG 29	APs - TKES Training Day 1		

SEPTEMBER 2013			
Monday, Sep 2, 2013 - Labor Day Holiday			
SEP 3	Principals - TKES Training Day 2		
SEP 4	APs - TKES Training Day 2		
SEP 5	APs - TKES Training Day 2		
SEP 6	Executive Cabinet	8:00 AM	Sm Conf
SEP 9	Full Cabinet Mtg - CO	8:00 AM	CO Upstairs
SEP 9	BOE Work Session	6:30 PM	PWES
SEP 10	BOE MEETING	1:00 PM	CO
SEP 9	Principals - TKES Training Day 3		
SEP 10	APs - TKES Training Day 3		
SEP 11	APs - TKES Training Day 3		
SEP 12	THU - SUPERINTENDENT'S MTG	9:00 AM	Ragin Ctr
SEP 12	Elem/Mid/High Principals Breakout Mtgs to Follow		
SEP 13	AP Meeting	8:00-12:00	Ragin Ctr
SEP 23	Executive Cabinet	8:00 AM	Sm Conf

Date	Meeting	Time	Site
OCTOBER 2013			
OCT 4	Executive Cabinet - CO	8:00 AM	Sm Conf
OCTOBER 7-10 FALL BREAK			
(Students, Teachers, & All Except 242-Day Staff)			
Friday, October 11, Columbus Day Holiday (observed)			
Monday, Oct 14 (Professional Learning Day, Parent Conf, Stu Holiday)			
OCT 17	LEADING Edge - PRINCIPALS	8-10 AM	Ragin Ctr
OCT 17	LEADING Edge - AP's	11 AM-1 PM	Ragin Ctr
OCT 17	LEADING Edge - AP's	2-4 PM	Ragin Ctr
OCT 18	Executive Cabinet - CO	8:00 AM	Sm Conf
OCT 21	FULL CABINET	8:00 AM	CO Upstairs
OCT 21	BOE Work Session	6:30 PM	PSES
OCT 22	BOE MEETING	1:00 PM	CO
OCT 24	APs Meeting	8:00-12:00	Ragin Ctr
OCT 25	FRI - SUPT'S MTG & PICNIC	9:00 AM	Ragin Ctr
OCT 25	Elem/Mid/High Principals Breakout Mtgs to Follow		

NOVEMBER 2013			
NOV 8	Executive & Full Cabinet	8:00 AM	Sm Conf
Monday 11-11-13 Veterans Day Holiday			
No Work Session In November			
NOV 12	BOE MEETING	1:00 PM	CO
NOV 14	THU - SUPERINTENDENT'S MTG	9:00 AM	Ragin Ctr
NOV 14	Elem/Mid/High Principals Breakout Mtgs to Follow		
NOV 15	APs Meeting	8-12 AM	Ragin Ctr
NOV 22	Executive Cabinet	8:00 AM	Sm Conf
Nov 25-29, 2013 - Thanksgiving Holidays			

DECEMBER 2013			
DEC 5	LEADING Edge - PRINCIPALS	8-10 AM	Ragin Ctr
DEC 5	LEADING Edge - AP's	11 AM-1 PM	Ragin Ctr
DEC 5	LEADING Edge - AP's	2-4 PM	Ragin Ctr
DEC 6	Executive Cabinet	8:00 AM	Sm Conf
DEC 9	Full Cabinet Meeting	8:00 AM	CO Upstairs
DEC 9	BOE Work Session	6:30 PM	DPES
DEC 10	BOE MEETING	1:00 PM	CO
DEC 12	THU - SUPERINTENDENT'S MTG	9:00 AM	Ragin Ctr
DEC 12	Elem/Mid/High Principals Breakout Mtgs to Follow		
DEC 13	APs Meeting	8:00-12:00	Ragin Ctr
DEC 17	Executive Cabinet	8:00 AM	Sm Conf
Friday, Dec 20, 2013 - Last Day of First Semester			
Dec 23, 2013 - Jan 2, 2014 - Christmas Holidays			

Houston County Schools, 2013-2014 SYSTEM Administrative Meetings Calendar

*Please note that dates are subject to change should a conflict arise!

Date	Meeting	Time	Site
JANUARY 2014			
JAN 3	Teacher Workday - Student Holiday		
JAN 6	Monday - First Day of Second Semester		
JAN 10	Executive Cabinet	8:00 AM	Sm Conf
JAN 13	Full Cabinet Meeting	8:00 AM	CO Upstairs
JAN 13	BOE Work Session	6:30 PM	DPPS
JAN 14	BOE MEETING	1:00 PM	CO
JAN 16	THU - SUPERINTENDENT'S MTG	9:00 AM	Ragin Ctr
JAN 16	Elem/Mid/High Principals Breakout Mtgs to Follow		
JAN 17	APs Meeting	8:00-11:00	Ragin Ctr
Monday, Jan 20, 2014 - Martin Luther King, Jr. Holiday			
JAN 28	Executive Cabinet	8:00 AM	Sm Conf

FEBRUARY 2014			
FEB 5	School Improvement Presentations		TBA
FEB 6	School Improvement Presentations		TBA
FEB 7	School Improvement Presentations		TBA
FEB 7	Executive Cabinet	8:00 AM	Sm Conf
FEB 10	Full Cabinet Meeting	8:00 AM	CO Upstairs
FEB 10	BOE Work Session	6:30 PM	PHS
FEB 11	BOE MEETING	1:00 PM	CO
FEB 13	THU - SUPERINTENDENT'S MTG	9:00 AM	Ragin Ctr
FEB 13	Elem/Mid/High Principals Breakout Mtgs to Follow		
FEB 14	APs Meeting	8:00-12:00	Ragin Ctr
Monday, Feb 17, 2014 - President's Day Holiday			
Winter Holiday - Feb 18, 2014			
Wednesday, Feb 19, 2014 (Professional Learning Day) Student Holiday			
FEB 25	Executive Cabinet	8:00 AM	Sm Conf
FEB 27	LEADing Edge - PRINCIPALS	8-10 AM	Ragin Ctr
FEB 27	LEADing Edge - AP's	11 AM- 1 PM	Ragin Ctr
FEB 27	LEADing Edge - AP's	2-4 PM	Ragin Ctr

MARCH 2014			
MAR 7	Executive Cabinet	8:00 AM	Sm Conf
MAR 10	Full Cabinet Meeting	8:00 AM	CO Upstairs
MAR 10	BOE Work Session	6:30 PM	PMS
MAR 11	BOE MEETING	1:00 PM	CO
MAR 13	THU - SUPERINTENDENT'S MTG	9:00 AM	Ragin Ctr
MAR 13	Elem/Mid/High Principals Breakout Mtgs to Follow		
MAR 14	APs Meeting	8-11 AM	Ragin Ctr
MAR 25	Executive Cabinet	8:00 AM	Sm Conf

Date	Meeting	Time	Site
APRIL 2014			
March 31 - April 4 SPRING BREAK			
APR 7	Full Cabinet Meeting	8:00 AM	CO Upstairs
APR 7	BOE Work Session	6:30 PM	PPS
APR 8	BOE MEETING	1:00 PM	CO
APR 10	THU - SUPERINTENDENT'S MTG	9:00 AM	Ragin Ctr
APR 10	Elem/Mid/High Principals Breakout Mtgs to Follow		
CRCT: April 14-18, 2014			
APR 22	Executive Cabinet	8:00 AM	Sm Conf
PROM - HIGH SCHOOLS: Saturday, April 26, 2014			

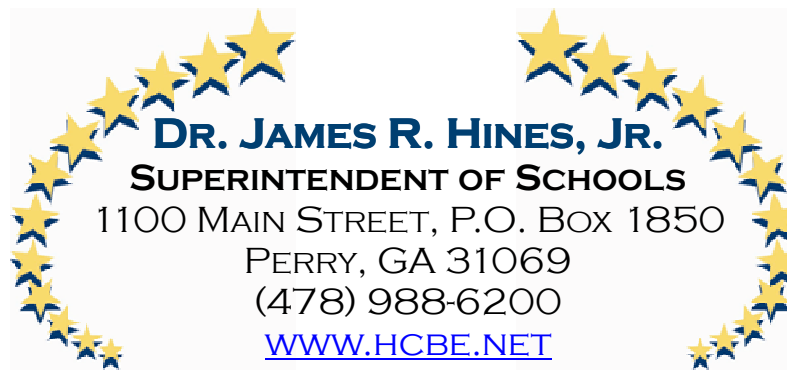
MAY 2014			
MAY 9	Executive Cabinet	8:00 AM	Sm Conf
MAY 12	Full Cabinet	8:00 AM	CO Upstairs
MAY 12	BOE Work Session	6:30 PM	QRES
MAY 13	BOE MEETING	1:00 PM	CO
MAY 13	RETIREMENT BANQUET	6:30 PM	McGill MP
MAY 15	THU - SUPERINTENDENT'S MTG	9:00 AM	Ragin Ctr
MAY 15	Elem/Mid/High Principals Breakout Mtgs to Follow		
MAY 20	Executive Cabinet	8:00 AM	Sm Conf
MAY 23	Last Day of School		
MAY 23 & 24: Perry - Miller Murphy Howard Building			
HCCA Graduation - Friday, May 23th, 6:00 PM			MMH
NHS Graduation, Saturday, May 24th, 6:00 PM			MMH
WRHS Graduation, Friday, May 23rd, 8:00 PM			MMH
VHS Graduation, Saturday, May 24th, 9:00 AM			MMH
PHS Graduation, Saturday, May 24th, 12:00 PM			MMH
HCHS Graduation, Saturday, May 24th, 3:00 PM			MMH
Monday, May 26, 2014 Memorial Day Holiday			
May 27-28, 2014 - Post-Planning			
MAY 29	LEADERSHIP SUMMIT		

JUNE 2014			
JUN 6	Executive Cabinet	8:00 AM	Sm Conf
JUN 9	BOE Work Session	6:30 PM	CO
JUN 10	BOE MEETING	1:00 PM	CO
JUN 24	Executive Cabinet	8:00 AM	Sm Conf



THE HOUSTON COUNTY WAY

- ☆ Strive for excellence in all that we do.
 - ☆ Have a professional attitude.
 - ☆ Go the extra mile.
- ☆ Base decisions on what's best for the child.
 - ☆ Provide quality customer service.
- ☆ Hard work, dedication and love for children.
- ☆ Approach work every day with a positive attitude, hope, enthusiasm and compassion.
 - ☆ Do things right; do the right thing.



H. E. A.
Federal Credit Union
Serving Educators since 1961!

This credit union is federally insured by the National Credit Union Administration.

**CALENDAR PROVIDED COMPLIMENTS OF THE HCBOE COMMUNITY RELATIONS DEPARTMENT AND OUR
PREMIER SYSTEM SPONSORS ~ PARRISH CONSTRUCTION & HEA FEDERAL CREDIT UNION**