



Education,  
Exploration, &  
Wildlife  
Rehabilitation



Environmental Studies Center

6101 Girby Road  
Mobile, AL 36693

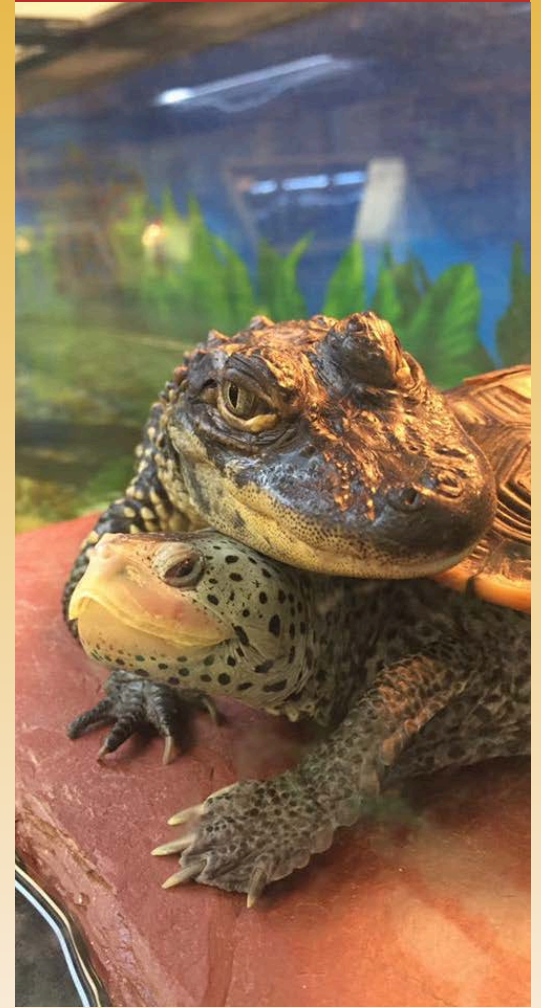
251-221-5000  
[www.mcpsesc.com](http://www.mcpsesc.com)



Mobile County Public Schools



## Remarkable Reptiles Show



Environmental Studies Center



## Who We Are....

The Environmental Studies Center is a natural sciences education facility designed to provide unique learning experiences. Featuring over 500 acres of rich woodlands, the Center affords teachers, students, and the general public an opportunity to experience firsthand the natural environment. Natural resources include pine and bay forests, swamps, freshwater streams, carnivorous plant bog, and a twenty-acre lake.

In addition, wildlife rehabilitation plays a vital role each day at the Center. The wildlife rehabilitation program is dedicated to the care and potential release of injured and orphaned native wildlife. The wildlife rehabilitation program receives over 600 wild patients a year. These animals all need food, care, and shelter to survive. The program relies upon donations from people like you for its operation. All proceeds from our traveling shows benefit the wildlife rehabilitation program.

Do you want to educate others about native reptiles?

The Remarkable Reptiles Show can help make this possible!

### Prices

First Show: \$150

Plus Mileage

Each Additional Show: \$75



## The Environmental Studies Center's Remarkable Reptile Show:

- Engages and educates your audience about the wonders of native reptiles
- Appropriate for most audiences and/or venues
- Correlated to the ALCOS objectives when appropriate
- Includes live animals such as turtles, snakes, and an alligator
- Utilizes models when appropriate
- Cannot guarantee any particular animal for any specific program due to circumstances beyond our control
- Raises money, including donations, to help support the ESC's non-profit wildlife rehabilitation program