

# Six-Month AHERA Asbestos Periodic Surveillance

For Compliance With:  
State of Connecticut Department of Public Health (CTDPH)  
Asbestos-Containing Material in Schools Regulation  
(Sections 19a-333-1 through 19a-333-13)  
and  
United States Environmental Protection Agency (EPA)  
Asbestos Hazard Emergency Response Act (AHERA)  
(Title 40 CFR Part 763, Subpart E)

**New Milford Public Schools**  
New Milford, Connecticut

April & May 2019



**Fuss & O'Neill, Inc.**  
146 Hartford Road  
Manchester, CT 06040



FUSS & O'NEILL

June 17, 2019

Mr. Kevin Munrett  
Facilities Manager  
New Milford Public Schools  
386 Danbury Road  
New Milford, CT 06776

**Re: Six-Month AHERA Asbestos Periodic Surveillance**  
**Surveillance Dates: April 30 & May 1, 2019**  
**New Milford Public Schools**  
Fuss & O'Neill Project No. 20071230.B50

Dear Mr. Munrett:

Enclosed is the Asbestos Hazard Emergency Response Act (AHERA) six-month periodic surveillance report prepared by Fuss & O'Neill, Inc. (Fuss & O'Neill) for the following schools of New Milford Public Schools in New Milford, Connecticut.

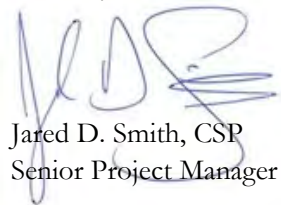
- |                                       |                                    |
|---------------------------------------|------------------------------------|
| 1. Facilities Administration Building | 4. Northville Elementary School    |
| 2. Hill & Plain Elementary School     | 5. Sarah Noble Intermediate School |
| 3. Lillis Administration Building     | 6. Schaghticoke Middle School      |

These reports are important documents that must be included in the existing Asbestos Management Plan (AMP). Each school should have its own report on file. In addition, a copy of each report should be maintained at a central location where the AMPs are stored.

If you have any questions regarding this report, please do not hesitate to contact me at (860) 646-2469, ext. 5333. Thank you for this opportunity to have served your environmental needs.

146 Hartford Road  
Manchester, CT  
06040  
t 860.646.2469  
800.286.2469  
f 860.533.5143  
[www.fando.com](http://www.fando.com)

Sincerely,



Jared D. Smith, CSP  
Senior Project Manager

JDS/kr

Enclosure

California  
Connecticut  
Maine  
Massachusetts  
New Hampshire  
Rhode Island  
Vermont

## Table of Contents

### Six-Month AHERA Asbestos Periodic Surveillance New Milford Public Schools

---

Section 1	Facilities Administration Building
Section 2	Hill & Plain Elementary School
Section 3	Lillis Administration Building
Section 4	Northville Elementary School
Section 5	Sarah Noble Intermediate School
Section 6	Schaghticoke Middle School

#### Appendices

#### End of Report

APPENDIX A	FUSS & O'NEILL ASBESTOS INSPECTOR CTDPH LICENSE AND EPA ACCREDITATION
APPENDIX B	FLOOR PLANS



## Section 1

---

### Facilities Administration Building



# Six-Month AHERA Asbestos Periodic Surveillance

For Compliance With:  
State of Connecticut Department of Public Health (CTDPH)  
Asbestos-Containing Material in Schools Regulation  
(Sections 19a-333-1 through 19a-333-13)  
and  
United States Environmental Protection Agency (EPA)  
Asbestos Hazard Emergency Response Act (AHERA)  
(Title 40 CFR Part 763, Subpart E)

**Facilities Administration Building**  
New Milford, Connecticut

May 2019



**Fuss & O'Neill, Inc.**  
146 Hartford Road  
Manchester, CT 06040

## Introduction

Fuss & O'Neill, Inc. (Fuss & O'Neill) was retained by New Milford Public Schools (the "Client") to conduct six-month periodic surveillances of previously identified asbestos-containing building materials (ACBM) at the Facilities Administration Building. This periodic surveillance was conducted in accordance with the requirements of the State of Connecticut Department of Public Health (CTDPH) Asbestos-Containing Material in Schools regulation (Section 19a-333-1 through 19a-333-13) and the United States Environmental Protection Agency (EPA) Asbestos Hazard Emergency Response Act (AHERA) regulation (Title 40 CFR Part 763, Subpart E).

On May 1, 2019, Stacy Vanderveer of Fuss & O'Neill performed the periodic surveillance. Ms. Vanderveer is a CTDPH-licensed Asbestos Inspector (refer to *Appendix A*). This surveillance was based on available information in the existing Asbestos Management Plan (AMP) for this building provided to Fuss & O'Neill by the Client.

## Scope of Work

Periodic surveillance involves the visual reassessment of any ACBM or assumed ACBM in the AMP for the Facilities Administration Building. The date of the periodic surveillance, as well as the location of each area, was noted along with any changes of the ACBM condition. The results of this surveillance are listed in the periodic surveillance form included in this report.

## Discussion

During this surveillance, no changes in the condition of the ACBM identified in the AMP were observed. Specific ACBM locations are listed in the attached periodic surveillance form.

AHERA regulations pertain to interior identified or assumed ACBM and limited exterior ACBM. AHERA regulations do include ACBM located on exterior porticos, covered walkways, and mechanical equipment used to condition interior building air. Suspect ACBM has not been previously identified in these areas at the Facilities Administration Building; however, suspect asbestos-containing asphaltic roofing materials (built-up roofing, base flashing, sealants, waterproofing, etc.) were noted on the building exterior. In accordance with EPA National Emission Standards for Hazardous Air Pollutants (NESHAP), prior to disturbance, samples of these suspect ACBM must be collected and analyzed for asbestos content.

## Conclusion

The majority of the previously identified ACBM were observed to be in similar condition to the most recent 6-month periodic surveillance.

If renovation or demolition activities are scheduled that will impact identified or suspect (assumed) ACBM, the ACBM or assumed ACBM must be removed by a CTDPH-licensed Asbestos Abatement

Contractor, or sampled to determine asbestos content prior to disturbance. This is a CTDPH Standards for Asbestos Abatement requirement, as well as an EPA NESHAP requirement.

Report prepared by Environmental Technician Stacy Vanderveer.

Reviewed by:



Eduardo Miguel Marques  
Senior Environmental Analyst



Jared D. Smith, CSP  
Senior Project Manager

## 6-Month Periodic Surveillance Form

Local Education Agency (LEA): New Milford Public Schools.

Facility Address: Facilities Administration Building, 386 Danbury Road, New Milford, CT 06776

Date of Surveillance: May 1, 2019

### ACBM 6-Month Surveillance Report

Asbestos-Containing Building Material	Location	Previous Condition	Present Condition	Change in Condition (Yes/No)	Estimated Damaged Quantity	Comments
White Pipe Insulation	Basement	D	D	No	8 LF	8 LF of Pipe Insulation damaged in the Basement. Material is covered with poly sheeting but remains loosely attached to the pipe.
White Pipe Fitting Insulation	Basement	G	G	No	NA	
White 1' x 1' Ceiling Tiles & Associated Glue Daubs	2 <sup>nd</sup> Floor NE Office (Previously Identified As 2 <sup>nd</sup> floor Secretary's Office)	IA	IA	No	NA	Material Covered by Thin Skim Coat and White Paint; Material assumed to be ACBM; recommend sampling prior to disturbance
Silver Duct Insulation	Attic	G	G	No	NA	Material assumed to be ACBM; recommend sampling prior to disturbance
Tan/Black Batt Wrapping Insulation	Attic	D	D	No	200 SF	Material is assumed to be ACBM. Recommend posting signage at entry to attic to restrict access. Recommend sampling material to determine asbestos content



Asbestos-Containing Building Material	Location	Previous Condition	Present Condition	Change in Condition (Yes/No)	Estimated Damaged Quantity	Comments
Black Sheet Paper Underneath Two Layers of Flooring	Kitchen	IA	IA	No	NA	Material is inaccessible, only a small area is exposed where a dishwasher was previously located. Material assumed to be ACBM; recommend sampling prior to disturbance
Yellow Ceramic Wall Tile, associated grout and adhesive	Bathrooms	G	G	No	NA	Material assumed to be ACBM; recommend sampling prior to disturbance
Red Wall Paper	1 <sup>st</sup> Floor Bathroom, 1 <sup>st</sup> floor Secretary Office	G	G	No	NA	Material assumed to be ACBM; recommend sampling prior to disturbance
White/Blue Wall Paper	1 <sup>st</sup> floor Facilities Manager office, 1 <sup>st</sup> floor Maintenance Assistant office	G	G	No	NA	Material assumed to be ACBM; recommend sampling prior to disturbance
Yellow Wall Paper	1 <sup>st</sup> floor Storage room	G	G	No	NA	Material assumed to be ACBM; recommend sampling prior to disturbance
Gray Plaster Base Coat	Throughout Walls, Ceiling and Chimney at the Attic	F	F	Yes	NA	Materials sampled in 2000 and determined to be Non-ACM. (Sample IDs: DF-1030-09A, DF-1030-11B, and DF-1030-9C.) Recommend additional sampling to meet NESHAP requirements prior to removing material from AMP

Asbestos-Containing Building Material	Location	Previous Condition	Present Condition	Change in Condition (Yes/No)	Estimated Damaged Quantity	Comments
White Plaster Skim Coat	Throughout Walls, Ceiling and Chimney at the Attic	F	F	Yes	NA	Materials sampled in 2000 and determined to be Non-ACM. (Sample IDs: DF-1030-08A, DF-1030-10B, and DF-1030-8C.) Recommend additional sampling to meet NESHAP requirements prior to removing material from AMP
White Textured Skim Coat	Room 2-3, Stairwells	G	G	No	NA	Material assumed to be ACBM; recommend sampling prior to disturbance
White Gypsum Board Wall & Joint Compound	Rear foyer, Bathrooms, Room 1, 2-2, 2-3, 2-4	G	G	No	NA	Material assumed to be ACBM; recommend sampling prior to disturbance
White Laminated Wall Panel & Associated Adhesive	Kitchen (at stove/sink wall)	G	G	No	NA	Material assumed to be ACBM; recommend sampling prior to disturbance
Black Laminated Counter Top	Kitchen	G	G	No	NA	Material assumed to be ACBM; recommend sampling prior to disturbance
White 2" x 2" Ceiling Tiles	1 <sup>st</sup> floor Maintenance Assistant office	G	G	No	NA	Material assumed to be ACBM; recommend sampling prior to disturbance.

Conditions: D = Damaged; F = Fair; G = Good; IA = Inaccessible; NA = Not Applicable

Surveillance conducted by: Stacy Vanderveer  
(print name)

  
(signature)

I, the LEA's Designated Person, have read and understood the findings noted above: \_\_\_\_\_ Date: \_\_\_\_\_

## Section 2

---

Hill & Plain Elementary School

# Six-Month AHERA Asbestos Periodic Surveillance

For Compliance With:  
State of Connecticut Department of Public Health (CTDPH)  
Asbestos-Containing Material in Schools Regulation  
(Sections 19a-333-1 through 19a-333-13)  
and  
United States Environmental Protection Agency (EPA)  
Asbestos Hazard Emergency Response Act (AHERA)  
(Title 40 CFR Part 763, Subpart E)

**Hill & Plain Elementary School**  
New Milford, Connecticut

May 2019



**Fuss & O'Neill, Inc.**  
146 Hartford Road  
Manchester, CT 06040

## Introduction

Fuss & O'Neill, Inc. (Fuss & O'Neill) was retained by New Milford Public Schools (the "Client") to conduct six-month periodic surveillances of previously identified asbestos-containing building materials (ACBM) at Hill & Plain Elementary School. This periodic surveillance was conducted in accordance with the requirements of the State of Connecticut Department of Public Health (CTDPH) Asbestos-Containing Material in Schools regulation (Section 19a-333-1 through 19a-333-13) and the United States Environmental Protection Agency (EPA) Asbestos Hazard Emergency Response Act (AHERA) regulation (Title 40 CFR Part 763, Subpart E).

On May 1, 2019, Stacy Vanderveer of Fuss & O'Neill performed the periodic surveillance. Ms. Vanderveer is a CTDPH-licensed Asbestos Inspector (refer to *Appendix A*). This surveillance was based on available information in the existing Asbestos Management Plan (AMP) for this building provided to Fuss & O'Neill by the Client.

## Scope of Work

Periodic surveillance involves the visual reassessment of any ACBM or assumed ACBM in the AMP for Hill & Plain Elementary School. The date of the periodic surveillance, as well as the location of each area, was noted along with any changes of the ACBM condition. The results of this surveillance are listed in the periodic surveillance form included in this report.

## Discussion

During this surveillance, minor changes in the condition of the ACBM identified in the AMP were observed. Specific ACBM locations are listed in the attached periodic surveillance form.

AHERA regulations pertain to interior identified or assumed ACBM and limited exterior ACBM. AHERA regulations do include ACBM located on exterior porticos, covered walkways, and mechanical equipment used to condition interior building air. Suspect ACBM have not been previously identified in these areas at the Hill & Plain Elementary School; however, suspect asbestos-containing asphaltic roofing materials (built-up roofing, base flashing, sealants, waterproofing, etc.) were noted on the building exterior. In accordance with EPA National Emission Standards for Hazardous Air Pollutants (NESHAP), prior to disturbance, samples of these suspect ACBM must be collected and analyzed for asbestos content.

## Conclusion

The majority of the previously identified ACBM were observed to be in similar condition to the most recent 6-month periodic surveillance.

If renovation or demolition activities are scheduled that will impact identified or suspect (assumed) ACBM, the ACBM or assumed ACBM must be removed by a CTDPH-licensed Asbestos Abatement

Contractor, or sampled to determine asbestos content prior to disturbance. This is a CTDPH Standards for Asbestos Abatement requirement, as well as an EPA NESHAP requirement.

Report prepared by Environmental Technician Stacy Vanderveer.

Reviewed by:



Eduardo Miguel Marques  
Senior Environmental Analyst



Jared D. Smith, CSP  
Senior Project Manager

## 6-Month Periodic Surveillance Form

Local Education Agency (LEA): New Milford Public Schools.

Facility Address: Hill & Plain Elementary School, 60 Old Town Park Road, New Milford, CT 06776

Date of Surveillance: May 1, 2019

### ACBM 6-Month Surveillance Report

Asbestos-Containing Building Material	Location	Previous Condition	Present Condition	Change in Condition (Yes/No)	Estimated Damaged Quantity	Comments
Pipe Insulation	Throughout building – tunnels, above ceilings in corridor, classrooms, cafeteria, storage areas, main office, and within pipe chases	G	G	No	NA	Some material inaccessible (above ceilings, in pipe chases).
Pipe Fitting Insulation	Throughout building – tunnels, above ceilings in corridor, classrooms, cafeteria, storage areas, main office, and within pipe chases	G	G	No	NA	Some material inaccessible (above ceilings, in pipe chases).
Interior Boiler Roping, Gaskets, Firebrick Materials, etc.	Boiler room – within boilers one (1) and two (2)	IA	IA	No	NA	Material assumed to be ACBM; recommend sampling prior to disturbance
White 2'x4' Ceiling Tile	Throughout building	G	G	No	NA	Material assumed to be ACBM; recommend sampling prior to disturbance

Asbestos-Containing Building Material	Location	Previous Condition	Present Condition	Change in Condition (Yes/No)	Estimated Damaged Quantity	Comments
Kiln Insulation	Art Room 15B	G	G	No	NA	Not Regulated by AHERA; for Informational Purposes Only. Material must be Managed/Disposed of as ACM. Maintain under O & M Plan. Material assumed to be ACBM; recommend sampling prior to disturbance
White Textured Ceiling Plaster	Entry to kindergarten school (Located in hallway by Rooms 1 and 3)	G	G	No	NA	Material assumed to be ACBM; recommend sampling prior to disturbance
Plaster Ceiling	Boiler room	G	G	No	NA	Material assumed to be ACBM; recommend sampling prior to disturbance
Vibration Isolation Cloth	Gymnasium (four locations)	G	G	No	NA	Material assumed to be ACBM; recommend sampling prior to disturbance
Gray Sink Undercoating	Classrooms 1, 2, 14A, 23A, 27, 28, 29, 30, 31, 33, 34, media center office, Art Room 15B, Music Room 15A, copy room opposite Room 13, Special Education/Health Room ("PTO") adjacent 15A	G	G	No	NA	Additional locations identified May 2019. Not Regulated by AHERA; for Informational Purposes Only. Material must be Managed/Disposed of as ACM. Maintain under O & M Plan. Material assumed to be ACBM; recommend sampling prior to disturbance



Asbestos-Containing Building Material	Location	Previous Condition	Present Condition	Change in Condition (Yes/No)	Estimated Damaged Quantity	Comments
Black Sink Undercoating	Classrooms 3, 4, 5, 6, 7, 8, 9, 10, 11, 12, 13, 15-C, 16, 17, 18, 19, 20, 21, 22, 14, copy room, and main office work room	G	G	No	NA	Additional locations identified May 2019. Not Regulated by AHERA; for Informational Purposes Only. Material must be Managed/Disposed of as ACM. Maintain under O & M Plan. Material assumed to be ACBM; recommend sampling prior to disturbance
Blackboards & Associated Adhesive	Throughout building – corridors, classrooms, offices, library, main office, principal's office, teacher's room, storage rooms, and cafeteria	G	G	No	NA	Material assumed to be ACBM; recommend sampling prior to disturbance
Tackboards & Associated Adhesive	Throughout building – corridors, classrooms, offices, library, main office, principal's office, teacher's room, storage rooms, and cafeteria	G	G	No	NA	Material assumed to be ACBM; recommend sampling prior to disturbance

Asbestos-Containing Building Material	Location	Previous Condition	Present Condition	Change in Condition (Yes/No)	Estimated Damaged Quantity	Comments
Gypsum Board & Associated Joint/Taping Compound	Throughout building – corridors, classrooms (except 17 & 18), offices, storage rooms, toilet rooms, library, main office, principal's office, teacher's room, storage rooms, kitchen, boiler room, and cafeteria	G	G	No	NA	Material assumed to be ACBM; recommend sampling prior to disturbance. Gypsum board samples were collected in Rooms 17 & 18, and were determined to be Non-ACBM. Sample IDs: 080918BH-03A, & 080918BH-03B One sample of joint compound was taken in room 16 and found to be <1% ACM. Sample ID: 080918BH-09 Recommend additional sampling in representative locations prior to disturbance or removal from AMP
Gray Ductwork Joint Sealant and/or Paper	Throughout building – corridors, classrooms, offices, storage rooms, toilet rooms, library, main office, principal's office, teacher's room, storage rooms, kitchen, boiler room, and cafeteria	G	G	No	NA	Material assumed to be ACBM; recommend sampling prior to disturbance.
White Interior Window Glazing Compounds	Classrooms 1 – 22 (exterior window systems)	G	G	No	NA	Material assumed to be ACBM; recommend sampling prior to disturbance.
Black Interior Window Glazing Compounds	Classrooms 27 – 34 (exterior window systems)	G	G	No	NA	Material assumed to be ACBM; recommend sampling prior to disturbance
Black Interior Column Caulking Compounds	Throughout building	G	G	No	NA	Material assumed to be ACBM; recommend sampling prior to disturbance.

Asbestos-Containing Building Material	Location	Previous Condition	Present Condition	Change in Condition (Yes/No)	Estimated Damaged Quantity	Comments
Black Interior Window Sills	Throughout building –classrooms, offices, storage rooms, toilet rooms, library, principal’s office, teacher’s room, kitchen, and cafeteria	G	G	No	NA	Material assumed to be ACBM; recommend sampling prior to disturbance.
Brown 4” Cove Base & Associated Adhesive	Throughout building – corridors, classrooms, offices, storage rooms, toilet rooms, library, main office, principal’s office, teacher’s room, storage rooms, kitchen, boiler room, and cafeteria	G	G	No	NA	Brown cove base and associated adhesive sampled and determined to be non-ACBM in Classrooms 7 & 6. Sample IDs: 5-15-PB-01-04A, 5-15-PB-01-04B, 5-15-PB-01-05A, and 5-15-PB-01-05B Materials to be confirmed homogenous during subsequent surveillances.
Gray 4” Cove Base & Associated Adhesive	Psychologist Office 7A, 23B and conference room	G	G	No	NA	Material assumed to be ACBM; recommend sampling prior to disturbance.
Black 4” Cove Base & Associated Adhesive	Room 22	G	G	No	NA	Black cove base and associated adhesive sampled and determined to be non-ACBM in Room 7. Sample IDs: 5-15-PB-01A, 5-15-PB-01B, 5-15-PB-02A, 5-15-PB-02B, 5-15-PB-03A, and 5-15-PB-03B Materials to be confirmed homogenous during subsequent surveillances

Asbestos-Containing Building Material	Location	Previous Condition	Present Condition	Change in Condition (Yes/No)	Estimated Damaged Quantity	Comments
Cementitious Paneling	Exterior overhangs – classrooms 21-26, classrooms 16-20, teacher's room – 10, classrooms 9-10, kindergarten 1 – kindergarten 3, classrooms 4 - custodian room	G	G	No	NA	Not Regulated by AHERA; for Informational Purposes Only. Material must be Managed/Disposed of as ACM. Maintain under O & M Plan. Material assumed to be ACBM; recommend sampling prior to disturbance.
Green Ceramic Wall Tile, Associated Grout and Adhesive	Bathrooms – classrooms 7 & 9	G	G	No	NA	Material assumed to be ACBM; recommend sampling prior to disturbance.
Brown Ceramic Wall Tile Associated Grout and Adhesive	Bathrooms – classrooms 3, 5, 10, 11, 13, 14, and custodial closets	G	G	No	NA	Material assumed to be ACBM; recommend sampling prior to disturbance.
Red Ceramic Wall Tile, Associated Grout and Adhesive	Bathrooms – classrooms 1, 2, 6, & 12	G	G	No	NA	Material assumed to be ACBM; recommend sampling prior to disturbance.
Blue Ceramic Wall Tile, Associated Grout and Adhesive	Bathrooms – classrooms 4 & 8	G	G	No	NA	Material assumed to be ACBM; recommend sampling prior to disturbance.
White With Yellow/Blue/Green Ceramic Floor Tile, Associated Grout and Adhesive	Bathrooms – classrooms & corridor bathroom at Room 2	G	G	No	NA	Material assumed to be ACBM; recommend sampling prior to disturbance.
White With Blue/Green Ceramic Floor Tile, Associated Grout and Adhesive	Bathrooms	G	G	No	NA	Material assumed to be ACBM; recommend sampling prior to disturbance.

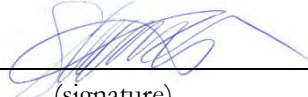
Asbestos-Containing Building Material	Location	Previous Condition	Present Condition	Change in Condition (Yes/No)	Estimated Damaged Quantity	Comments
White Ceramic Floor Tile, Associated Grout and Adhesive	Bathrooms	G	G	No	NA	Material assumed to be ACBM; recommend sampling prior to disturbance.
Brown Quarry Tile, Associated Grout and Adhesive	Kitchen	G	G	No	NA	Material assumed to be ACBM; recommend sampling prior to disturbance.
Light-Blue 12" x 12" Floor Tile & Associated Adhesive	Classrooms, main office, assistant principal, nurse, book storage, media office, computer room, art, cafeteria, observation room, and corridors	G	G	Yes	NA	Cracked/broken tiles observed in Art Room 15B, along slab joint. Material assumed to be ACBM; recommend sampling prior to disturbance.
Blue 12" x 12" Floor Tile & Associated Adhesive	Classrooms, main office, assistant principal, nurse, book storage, media office, computer room, art 15B, cafeteria, observation room, and corridors	G	G	No	NA	Material assumed to be ACBM; recommend sampling prior to disturbance. Classroom 7 was recently retiled with Blue 12"x12" Floor Tile
Tan 12" x 12" Floor Tile & Associated Adhesive	Classrooms 17, 23-26, Staff Room 15C	G	G	Yes	NA	Cracked/broken tiles observed in Music Room 15A, along slab joint. Material assumed to be ACBM; recommend sampling prior to disturbance.
Green 9" x 9" Floor Tile & Associated Mastic	Main office and main office work room	G	G	No	NA	
Tan 9" x 9" Floor Tile & Associated Mastic	Classrooms 5, 6, 8, 18, 19, Guidance Office 20A (under carpet), 21, and 22	G	G	No	NA	Material in Room 8 was abated in Summer of 2017. The AMP will be updated to reflect this change during the next triennial re-inspection
Brown 9" x 9" Floor Tile & Associated Mastic	Classrooms 7, 9, 10, 19, Classroom closet in Room 2, electrical closet at Room 9, storage, and custodial closet	G	G	No	NA	Material abated from Room 7 in July 2018. The AMP will be updated to reflect this change during the next triennial re-inspection

Asbestos-Containing Building Material	Location	Previous Condition	Present Condition	Change in Condition (Yes/No)	Estimated Damaged Quantity	Comments
Bright-green 9" x 9" Floor Tile & Associated Mastic	Copy room/mail room at principal's office	G	G	No	NA	
Dull green with white specks 9" x 9" Floor Tile & Associated Mastic	Copy room/mail room at principal's office	G	G	No	NA	
Green/gray 9" x 9" Floor Tile & Associated Mastic	Copy room/mail room at principal's office and room 17	G	G	No	NA	
White with Black Streaks 9" x 9" Floor Tile & Associated Mastic	Copy room/mail room at principal and room 17	G	G	No	NA	This material was not observed in Room 17 during May 2019 surveillance.
Blue 9" x 9" Floor Tile & Associated Mastic	Classroom 4	G	G	No	NA	
Yellow Carpet Glue	Classrooms 1-5, 14A, media center, conference room, main office, speech, psychologist office 7A, Guidance office 20A, 23A	IA	IA	No	NA	Additional locations identified May 2019. Material assumed to be ACBM; recommend sampling prior to disturbance.
Black Rubber Flooring & Associated Adhesive	Gymnasium	G	G	No	NA	Material assumed to be ACBM; recommend sampling prior to disturbance.
Stage Lighting Electrical Wiring	Stage	G	G	No	NA	Not Regulated by AHERA; for Informational Purposes Only. Material must be Managed/Disposed of as ACM. Maintain under O & M Plan. Material assumed to be ACBM; recommend sampling prior to disturbance.

Asbestos-Containing Building Material	Location	Previous Condition	Present Condition	Change in Condition (Yes/No)	Estimated Damaged Quantity	Comments
Stage Curtain	Stage	G	G	No	NA	Not Regulated by AHERA; for Informational Purposes Only. Material must be Managed/Disposed of as ACM. Maintain under O & M Plan. Material assumed to be ACBM; recommend sampling prior to disturbance.

Conditions: D = Damaged; G = Good; IA = Inaccessible; NA = Not Applicable

Surveillance conducted by: Stacy Vanderveer  
(print name)

  
(signature)

I, the LEA's Designated Person, have read and understood the findings noted above: \_\_\_\_\_ Date: \_\_\_\_\_

## Section 3

---

### Lillis Administration Building



# Six-Month AHERA Asbestos Periodic Surveillance

For Compliance With:  
State of Connecticut Department of Public Health (CTDPH)  
Asbestos-Containing Material in Schools Regulation  
(Sections 19a-333-1 through 19a-333-13)  
and  
United States Environmental Protection Agency (EPA)  
Asbestos Hazard Emergency Response Act (AHERA)  
(Title 40 CFR Part 763, Subpart E)

**Lillis Administration Building**  
New Milford, Connecticut

April 2019



**Fuss & O'Neill, Inc.**  
146 Hartford Road  
Manchester, CT 06040

## Introduction

Fuss & O'Neill, Inc. (Fuss & O'Neill) was retained by New Milford Public Schools (the "Client") to conduct six-month periodic surveillances of previously identified asbestos-containing building materials (ACBM) at the Lillis Administration Building. This periodic surveillance was conducted in accordance with the requirements of the State of Connecticut Department of Public Health (CTDPH) Asbestos-Containing Material in Schools regulation (Section 19a-333-1 through 19a-333-13) and the United States Environmental Protection Agency (EPA) Asbestos Hazard Emergency Response Act (AHERA) regulation (Title 40 CFR Part 763, Subpart E).

On April 30, 2019, Stacy Vanderveer of Fuss & O'Neill performed the periodic surveillance. Ms. Vanderveer is a CTDPH-licensed Asbestos Inspector (refer to *Appendix A*). This surveillance was based on available information in the existing Asbestos Management Plan (AMP) for this building provided to Fuss & O'Neill by the Client.

## Scope of Work

Periodic surveillance involves the visual reassessment of any ACBM or assumed ACBM in the AMP for the Lillis Administration Building. The date of the periodic surveillance, as well as the location of each area, was noted along with any changes of the ACBM condition. The results of this surveillance are listed in the periodic surveillance form included in this report.

## Discussion

During this surveillance, minor changes in the condition of the ACBM identified in the AMP were observed. Specific ACBM locations are listed in the attached periodic surveillance form.

AHERA regulations pertain to interior identified or assumed ACBM and limited exterior ACBM. AHERA regulations do include ACBM located on exterior porticos, covered walkways, and mechanical equipment used to condition interior building air. Suspect ACBM has not previously identified in these areas at the Lillis Administration Building; however, suspect asbestos-containing asphaltic roofing materials (built-up roofing, base flashing, sealants, waterproofing, etc.) were noted on the building exterior. In accordance with EPA National Emission Standards for Hazardous Air Pollutants (NESHAP), prior to disturbance, samples of these suspect ACBM must be collected and analyzed for asbestos content.

## Conclusion

The majority of the previously identified ACBM were observed to be in similar condition to the most recent 6-month periodic surveillance, with the exception of the pipe insulation in the Room 3 closet, which was observed to be water-damaged.

If renovation or demolition activities are scheduled that will impact identified or suspect (assumed) ACBM, the ACBM or assumed ACBM must be removed by a CTDPH-licensed Asbestos Abatement

Contractor, or sampled to determine asbestos content prior to disturbance. This is a CTDPH Standards for Asbestos Abatement requirement, as well as an EPA NESHAP requirement.

Report prepared by Environmental Technician Stacy Vanderveer.

Reviewed by:



Eduardo Miguel Marques  
Senior Environmental Analyst



Jared D. Smith, CSP  
Senior Project Manager

## 6-Month Periodic Surveillance Form

Local Education Agency (LEA): New Milford Public Schools  
 Facility Address: Lillis Administration Building, 50 East Street, New Milford, CT 06776  
 Date of Surveillance: April 30, 2019

### ACBM 6-Month Surveillance Report

Asbestos-Containing Building Material	Location	Previous Condition	Present Condition	Change in Condition (Yes/No)	Estimated Damaged Quantity	Comments
Pipe Insulation	Vertical wall pipe chases and bathrooms, traffic coordinator's closet, Room 3 closet	G	G	No	NA	Material in Room 3 closet is water damaged; leak not yet repaired. Material in Room 3 (special education offices) determined to be ACBM in April 2019 – sample IDs: 04-18-19-SMM-01A-C.
Pipe Fitting Insulation	Vertical wall pipe chases and bathrooms, traffic coordinator's closet	G	G	No	NA	Material assumed to be ACBM; recommend sampling prior to disturbance.
Interior Boiler Components	Boiler Room	IA	IA	No	NA	Material assumed to be ACBM; recommend sampling prior to disturbance.
Duct Insulation Wrap	Bathrooms and 2 <sup>nd</sup> floor offices/rooms	G	G	No	NA	Material assumed to be ACBM; recommend sampling prior to disturbance.
Silver Wall Paint	Throughout Basement	SD	SD	No	150 SF	Material Determined to be ACBM in October 2017 Sample IDs: 092017JB-01A, 092017JB-01B, 092017JB-01C

Asbestos-Containing Building Material	Location	Previous Condition	Present Condition	Change in Condition (Yes/No)	Estimated Damaged Quantity	Comments
White Foundation Wall Skim Coat	Throughout Basement at exterior walls primarily covered by silver paint	D	D	No	50 SF	Material assumed to be ACBM; recommend sampling prior to disturbance.
Red Fire Caulking Compounds	Throughout building	G	G	No	NA	Material assumed to be ACBM; recommend sampling prior to disturbance
Fire Door Insulation	Throughout the building, potentially in fire doors	IA	IA	No	NA	Not Regulated by AHERA; for Informational Purposes Only. Material must be Managed/Disposed of as ACM. Maintain under O & M Plan. Material assumed to be ACBM; recommend sampling prior to disturbance
Adhesive associated with Wood Paneling	1 <sup>st</sup> floor town offices: Rooms 4 (Special Education Office), 5 (Financial Services Office), 6 (Asst. Superintendent's Office), 7 (Personnel/HR File Room), 8 (Board Room), 9 (Superintendent's Office), 10 (Payroll/Accounting Office)	IA	IA	No	NA	Additional location identified April 2019. Material assumed to be ACBM; recommend sampling prior to disturbance

Asbestos-Containing Building Material	Location	Previous Condition	Present Condition	Change in Condition (Yes/No)	Estimated Damaged Quantity	Comments
Glue Daubs associated with 1'x1' Ceiling Tile	Rooms 3 & 4 (special education offices) & adjoining restroom, gymnasium restrooms/shower rooms, storage rooms 3 and 5, basement storage room	D	D	No	300 SF	Glue daubs exposed and ceiling tiles with glue daubs debris on floor in two rooms by the boiler room (North and South end). Rooms 3 & 4 have water-damaged tiles at the exterior window walls.  Material assumed to be ACBM; recommend sampling prior to disturbance
Cementitious Paneling	Gym kitchen by Water Spigot	D	D	No	2 SF	No Debris Observed. Formerly referenced as "by Water Fountain." Material assumed to be ACBM; recommend sampling prior to disturbance
Vibration Isolation Cloth	Attic	G	G	No	NA	Material assumed to be ACBM; recommend sampling prior to disturbance
Red Ceramic Floor Tile, Associated Grout & Adhesive	Bathrooms and showers	G	G	No	NA	Material assumed to be ACBM; recommend sampling prior to disturbance
White Ceramic Wall Tile, Associated Grout & Adhesive	Bathrooms and showers	G	G	No	NA	Material assumed to be ACBM; recommend sampling prior to disturbance

Asbestos-Containing Building Material	Location	Previous Condition	Present Condition	Change in Condition (Yes/No)	Estimated Damaged Quantity	Comments
White Sink Undercoating	2 <sup>nd</sup> floor Rooms 5 (Financial Services Office), 10 (Payroll/Accounting Office), 3 <sup>rd</sup> floor Rooms 14, 12, 16	G	G	No	NA	Additional locations identified April 2019. Not Regulated by AHERA; for Informational Purposes Only. Material must be Managed/Disposed of as ACM. Maintain under O & M Plan. Material assumed to be ACBM; recommend sampling prior to disturbance
Black Sink Undercoating	Lunch Room	G	G	No	NA	Not Regulated by AHERA; for Informational Purposes Only. Material must be Managed/Disposed of as ACM. Maintain under O & M Plan. Material assumed to be ACBM; recommend sampling prior to disturbance
Red Terracotta Block & Associated Mortar	Throughout building	G	G	No	NA	Material assumed to be ACBM; recommend sampling prior to disturbance
Tan glazed Block Walls & Associated Mortar	2 <sup>nd</sup> and 3 <sup>rd</sup> floor corridors and stairwells	G	G	No	NA	Material assumed to be ACBM; recommend sampling prior to disturbance
Blackboards and Green Boards & Associated Adhesive	Throughout building	G	G	No	NA	Material assumed to be ACBM; recommend sampling prior to disturbance
Tackboards & Associate Adhesive	Throughout building	G	G	No	NA	Material assumed to be ACBM; recommend sampling prior to disturbance

Asbestos-Containing Building Material	Location	Previous Condition	Present Condition	Change in Condition (Yes/No)	Estimated Damaged Quantity	Comments
Brown Particle Board Paneling	Lower level storage room	G	G	No	NA	Material assumed to be ACBM; recommend sampling prior to disturbance
Gypsum Board & Associated Joint/Taping Compound	Throughout building, office partition walls	G	G	No	NA	Material assumed to be ACBM; recommend sampling prior to disturbance
White Interior Window Caulking Compounds	Throughout building	G	G	No	NA	Material assumed to be ACBM; recommend sampling prior to disturbance
Gray Interior Window Glazing Compounds	Basement	G	G	No	NA	Material assumed to be ACBM; recommend sampling prior to disturbance
Brown 4" Cove Base & Associated Adhesive	Room 2 (meeting room 2)	G	G	No	NA	Material assumed to be ACBM; recommend sampling prior to disturbance
White 4" Cove Base & Associated Adhesive	Gymnasium Shower Rooms	G	G	No	NA	Material assumed to be ACBM; recommend sampling prior to disturbance
Red 4" Cove Base & Associated Adhesive	Room 4 (Special Education Office)	G	G	No	NA	Material assumed to be ACBM; recommend sampling prior to disturbance
Yellow Carpet Glue	2 <sup>nd</sup> floor Rooms 5 (Financial Services Office), 8 (Board Room), 9 (Superintendent's Office), 10 (Payroll/Accounting Office), 3 <sup>rd</sup> floor Rooms 13, 17, and 16	IA	IA	No	NA	Additional location identified April 2019. Material assumed to be ACBM; recommend sampling prior to disturbance
Tan with Brown Streak 12" x 12" Floor Tile & Associated Adhesive	3 <sup>rd</sup> floor Room 14	G	G	No	NA	Material assumed to be ACBM; recommend sampling prior to disturbance

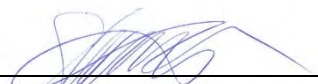


Asbestos-Containing Building Material	Location	Previous Condition	Present Condition	Change in Condition (Yes/No)	Estimated Damaged Quantity	Comments
White with Tan Specks 12" x 12" Floor Tile & Associated Adhesive	2 <sup>nd</sup> floor Room 1 (Technology Office), 3 <sup>rd</sup> floor Room 18	G	G	No	NA	Material assumed to be ACM; recommend sampling prior to disturbance
Gray 12" x 12" Floor Tile & Associated Mastic	Rooms 5 (Financial Services Office; carpet over 9" floor tiles), 6 (Asst. Superintendent's Office, carpet over 9" floor tiles), 10 (Payroll/Accounting Office, carpet over ?), lunch room	G	G	No	NA	Material assumed to be ACM; recommend sampling prior to disturbance
Blue 12" x 12" Floor Tile & Associated Adhesive	Lunch room	G	G	No	NA	Material assumed to be ACM; recommend sampling prior to disturbance
Green 9" x 9" Floor Tile & Associated Mastic	2 <sup>nd</sup> Floor copy room (under carpet)	G	G	No	NA	Floor tile description revised to note correct size (9"x9" instead of 12"x12"). Material assumed to be ACM; recommend sampling prior to disturbance
Light-blue 12" x 12" Floor Tile & Associated Adhesive	2 <sup>nd</sup> floor Rooms 1 (Technology Office) and 3 (Special Education Office)	G	G	No	NA	Material sampled & found to be non-ACM – April 2019. Sample IDs: 04-18-19-SMM-02A-C. The AMP will be updated to reflect this during the next triennial inspection. Material is adhered to ACM floor tile beneath. Material to be treated as ACM.
Bright-blue 12" x 12" Floor Tile & Associated Adhesive	2 <sup>nd</sup> floor Rooms 2 (meeting room 2) and 4 (Special Education office; partial carpet)	G	G	No	NA	Material assumed to be ACM; recommend sampling prior to disturbance
Black 9"x9" Floor Tile & Associated Mastic	2 <sup>nd</sup> and 3 <sup>rd</sup> floor corridors	G	G	No	NA	Material assumed to be ACM; recommend sampling prior to disturbance

Asbestos-Containing Building Material	Location	Previous Condition	Present Condition	Change in Condition (Yes/No)	Estimated Damaged Quantity	Comments
Gray 9"x9" Floor Tile & Associated Mastic	Throughout former classrooms and offices (Located under carpet, 12" x 12" Floor Tile, or plywood in some locations)	G	G	No	NA	Visible Material in good condition. Material assumed to be ACBM; recommend sampling prior to disturbance
Brown 9"x9" Floor Tile & Associated Mastic	Throughout former classrooms and offices, Basement bathrooms by boiler room (Located under carpet, 12" x 12" Floor Tile, or plywood in some locations)	D	D	No	10 SF	Damaged floor tile observed in storage/bathroom south of boiler room. Material in Rooms 3 & 4 (special education offices; under 12" floor tile) determined to be ACBM in April 2019. Sample IDs: 04-18-19-SMM-06A-C.
Vapor Barrier/Tar Under Wood Floor	2 <sup>nd</sup> floor Room 8 (Board Room), 3 <sup>rd</sup> floor Rooms 15 and 16, gymnasium, and lower level storage.	D	D	No	6 SF	Damaged observed in Basement; Material Inaccessible in Other Areas Material assumed to be ACBM; recommend sampling prior to disturbance
Brown Terrazzo Flooring & Associated Grout and Thinset	2 <sup>nd</sup> and 3 <sup>rd</sup> floor corridors and Room 9 (Superintendent's Office)	G	G	No	NA	Material assumed to be ACBM; recommend sampling prior to disturbance

Conditions: D = Damaged; G = Good; IA = Inaccessible; NA = Not Applicable

Surveillance conducted by: Stacy Vanderveer  
(print name)

  
(signature)

I, the LEA's Designated Person, have read and understood the findings noted above: \_\_\_\_\_ Date: \_\_\_\_\_

## Section 4

---

Northville Elementary School

# Six-Month AHERA Asbestos Periodic Surveillance

For Compliance With:  
State of Connecticut Department of Public Health (CTDPH)  
Asbestos-Containing Material in Schools Regulation  
(Sections 19a-333-1 through 19a-333-13)  
and  
United States Environmental Protection Agency (EPA)  
Asbestos Hazard Emergency Response Act (AHERA)  
(Title 40 CFR Part 763, Subpart E)

**Northville Elementary School**  
New Milford, Connecticut

April 2019



**Fuss & O'Neill, Inc.**  
146 Hartford Road  
Manchester, CT 06040

## Introduction

Fuss & O'Neill, Inc. (Fuss & O'Neill) was retained by New Milford Public Schools (the "Client") to conduct six-month periodic surveillances of previously identified asbestos-containing building materials (ACBM) at Northville Elementary School. This periodic surveillance was conducted in accordance with the requirements of the State of Connecticut Department of Public Health (CTDPH) Asbestos-Containing Material in Schools regulation (Section 19a-333-1 through 19a-333-13) and the United States Environmental Protection Agency (EPA) Asbestos Hazard Emergency Response Act (AHERA) regulation (Title 40 CFR Part 763, Subpart E).

On April 30, 2019, Stacy Vanderveer of Fuss & O'Neill performed the periodic surveillance. Ms. Vanderveer is a CTDPH-licensed Asbestos Inspector (refer to *Appendix A*). This surveillance was based on available information in the existing Asbestos Management Plan (AMP) for this building provided to Fuss & O'Neill by the Client.

## Scope of Work

Periodic surveillance involves the visual reassessment of any ACBM or assumed ACBM in the AMP for Northville Elementary School. The date of the periodic surveillance, as well as the location of each area, was noted along with any changes of the ACBM condition. The results of this surveillance are listed in the periodic surveillance form included in this report.

## Discussion

During this surveillance, no changes in the condition of the ACBM identified in the AMP were observed. Specific ACBM locations are listed in the attached periodic surveillance form.

AHERA regulations pertain to interior identified or assumed ACBM and limited exterior ACBM. AHERA regulations do include ACBM located on exterior porticos, covered walkways, and mechanical equipment used to condition interior building air. Suspect ACBM has not been previously identified in these areas at the Northville Elementary School; however, suspect asbestos-containing asphaltic roofing materials (built-up roofing, base flashing, sealants, waterproofing, etc.) were noted on the building exterior. In accordance with EPA National Emission Standards for Hazardous Air Pollutants (NESHAP), prior to disturbance, samples of these suspect ACBM must be collected and analyzed for asbestos content.

## Conclusion

The majority of the previously identified ACBM were observed to be in similar condition to the most recent 6-month periodic surveillance.

If renovation or demolition activities are scheduled that will impact identified or suspect (assumed) ACBM, the ACBM or assumed ACBM must be removed by a CTDPH-licensed Asbestos Abatement

Contractor, or sampled to determine asbestos content prior to disturbance. This is a CTDPH Standards for Asbestos Abatement requirement, as well as an EPA NESHAP requirement.

Report prepared by Environmental Technician Stacy Vanderveer.

Reviewed by:



Eduardo Miguel Marques  
Senior Environmental Analyst



Jared D. Smith, CSP  
Senior Project Manager

## 6-Month Periodic Surveillance Form

Local Education Agency (LEA): New Milford Public Schools.  
 Facility Address: Northville Elementary School, 22 Hipp Road, New Milford, CT 06776  
 Date of Surveillance: April 30, 2019

### ACBM 6-Month Surveillance Report

Asbestos-Containing Building Material	Location	Previous Condition	Present Condition	Change in Condition (Yes/No)	Estimated Damaged Quantity	Comments
Pipe Insulation	Within walls and pipe chases	IA	IA	No	NA	Material assumed to be ACBM; recommend sampling prior to disturbance
Pipe Fitting Insulation	Within walls and pipe chases	IA	IA	No	NA	Material assumed to be ACBM; recommend sampling prior to disturbance
Interior Boiler Components	Boiler room	IA	IA	No	NA	Material assumed to be ACBM; recommend sampling prior to disturbance
Red Fire Caulking Compounds	Boiler room	G	G	No	NA	Material assumed to be ACBM; recommend sampling prior to disturbance
White Textured Ceiling Paint	Front entrance corridor and exterior door overhangs 1, 5, 6, 7, 15, 16 & 17	G	G	No	NA	Material assumed to be ACBM; recommend sampling prior to disturbance
Cementitious Panels	Throughout at window systems (interior below windows) – especially at interior courtyard	G	G	No	NA	Material assumed to be ACBM; recommend sampling prior to disturbance Material appears to be a combination of metal panels or of a carbon fiber-like composition. Recommend further investigation during next triannual re-inspection
Brown Interior Window Caulking	Throughout exterior window systems	G	G	No	NA	Material assumed to be ACBM; recommend sampling prior to disturbance

Asbestos-Containing Building Material	Location	Previous Condition	Present Condition	Change in Condition (Yes/No)	Estimated Damaged Quantity	Comments
Black 4" Cove Base & Associated Adhesive	Gymnasium	G	G	No	NA	Material assumed to be ACBM; recommend sampling prior to disturbance
Brown 4" Cove Base & Associated Adhesive	Throughout building – corridors, classrooms, offices, storage rooms, toilet rooms, library, main office, principal's office, teacher's room, storage rooms, kitchen, and cafeteria	G	G	No	NA	Material assumed to be ACBM; recommend sampling prior to disturbance. Approximately two LF of cove base missing in classroom 3 coat rack area. Material less than three LF and falls under O&M Plan
Fire Door Insulation	Throughout building, potentially in fire door cores	G	G	No	NA	Not Regulated by AHERA; for Informational Purposes Only. Material must be Managed/Disposed of as ACM. Maintain under O & M Plan
Gypsum Board & Associated Joint/Taping Compound	Throughout building – corridors, classrooms, offices, storage rooms, toilet rooms, library, main office, principal's office, teacher's room, storage rooms, kitchen, boiler room, and cafeteria	G	G	No	NA	Material assumed to be ACBM; recommend sampling prior to disturbance
Blackboards & Associated Adhesive	Throughout building – corridors, classrooms, offices, toilet rooms, library, main office, principal's office, teacher's room, kitchen, and cafeteria	G	G	No	NA	Material assumed to be ACBM; recommend sampling prior to disturbance
Tackboards & Associated Adhesive	Throughout building – corridors, classrooms, offices, toilet rooms, library, main office, principal's office, teacher's room, kitchen, and cafeteria	G	G	No	NA	Material assumed to be ACBM; recommend sampling prior to disturbance



Asbestos-Containing Building Material	Location	Previous Condition	Present Condition	Change in Condition (Yes/No)	Estimated Damaged Quantity	Comments
Adhesive associated with Mirrors	Bathrooms	IA	IA	No	NA	Material assumed to be ACBM; recommend sampling prior to disturbance
Tan Ceramic Floor Tile, Associated Grout & Adhesive	Bathrooms	G	G	No	NA	Material assumed to be ACBM; recommend sampling prior to disturbance
Yellow Glue associated with 12" x 12" Floor Tile	Throughout building – corridors, classrooms, offices, storage rooms, toilet rooms, library, main office, principal's office, teacher's room, storage rooms, kitchen, and cafeteria	IA	IA	No	NA	Material assumed to be ACBM; recommend sampling prior to disturbance Associated Floor Tile should be considered contaminated with ACBM if disturbed
Black Mastic associated with 12" x 12" Floor Tile	Throughout building – corridors, classrooms, offices, storage rooms, toilet rooms, library, main office, principal's office, teacher's room, storage rooms, kitchen, and cafeteria	IA	IA	No	NA	Material assumed to be ACBM; recommend sampling prior to disturbance Associated Floor Tile should be considered contaminated with ACBM if disturbed
Orange 4" x 4" Quarry Tile & Associated Grout & Adhesive	Kitchen	G	G	No	NA	Material assumed to be ACBM; recommend sampling prior to disturbance
Stage Light Electrical Wiring	Cafeteria	G	G	No	NA	Not Regulated by AHERA; for Informational Purposes Only. Material must be Managed/Disposed of as ACM. Maintain under O & M Plan Material assumed to be ACBM; recommend sampling prior to disturbance

Asbestos-Containing Building Material	Location	Previous Condition	Present Condition	Change in Condition (Yes/No)	Estimated Damaged Quantity	Comments
Black Sink Undercoating	Throughout classrooms, teacher's room	G	G	No	NA	Not Regulated by AHERA; for Informational Purposes Only. Material must be Managed/Disposed of as ACM. Maintain under O & M Plan. Material assumed to be ACBM; recommend sampling prior to disturbance.
Grey Sink Undercoating	Main Office Copy/Staff Room	--	G	NA	NA	Material newly identified during April 2019 surveillance. Not Regulated by AHERA; for Informational Purposes Only. Material must be Managed/Disposed of as ACM. Maintain under O & M Plan. Material assumed to be ACBM; recommend sampling prior to disturbance.
White Sink Undercoating	Nurse's Room	--	G	NA	NA	Material identified during April 2019 surveillance. Material previously identified as Black Sink Undercoating. Not Regulated by AHERA; for Informational Purposes Only. Material must be Managed/Disposed of as ACM. Maintain under O & M Plan. Material assumed to be ACBM; recommend sampling prior to disturbance.
Vapor Barrier/Tar Under Wood Flooring	Gymnasium, Stage in Cafeteria	IA	IA	No	NA	Additional location identified April 2019. Material assumed to be ACBM; recommend sampling prior to disturbance.

Asbestos-Containing Building Material	Location	Previous Condition	Present Condition	Change in Condition (Yes/No)	Estimated Damaged Quantity	Comments
Carpet Glue	Throughout carpeted areas of building – library, classrooms, offices, and conference rooms	G	G	No	NA	Samples collected from Main Office and Main Lobby. Sampled materials were determined to be Non-ACBM. Sample IDs: 2-20-PB-08A, 2-20-PB-08B, 2-20-PB-09A, and 2-20-PB-09B. Materials to be confirmed homogenous during subsequent surveillances

Conditions: D = Damaged; G = Good; IA = Inaccessible; NA = Not Applicable

Surveillance conducted by: Stacy Vanderveer  
(print name)

  
(signature)

I, the LEA's Designated Person, have read and understood the findings noted above: \_\_\_\_\_ Date: \_\_\_\_\_

## Section 5

---

Sarah Noble Intermediate School

# Six-Month AHERA Asbestos Periodic Surveillance

For Compliance With:  
State of Connecticut Department of Public Health (CTDPH)  
Asbestos-Containing Material in Schools Regulation  
(Sections 19a-333-1 through 19a-333-13)  
and  
United States Environmental Protection Agency (EPA)  
Asbestos Hazard Emergency Response Act (AHERA)  
(Title 40 CFR Part 763, Subpart E)

**Sarah Noble Intermediate School**  
New Milford, Connecticut

May 2019



**Fuss & O'Neill, Inc.**  
146 Hartford Road  
Manchester, CT 06040

## Introduction

Fuss & O'Neill, Inc. (Fuss & O'Neill) was retained by New Milford Public Schools (the "Client") to conduct six-month periodic surveillances of previously identified asbestos-containing building materials (ACBM) at Sarah Noble Intermediate School. This periodic surveillance was conducted in accordance with the requirements of the State of Connecticut Department of Public Health (CTDPH) Asbestos-Containing Material in Schools regulation (Section 19a-333-1 through 19a-333-13) and the United States Environmental Protection Agency (EPA) Asbestos Hazard Emergency Response Act (AHERA) regulation (Title 40 CFR Part 763, Subpart E).

On May 1, 2019, Stacy Vanderveer of Fuss & O'Neill performed the periodic surveillance. Ms. Vanderveer is a CTDPH-licensed Asbestos Inspector (refer to *Appendix A*). This surveillance was based on available information in the existing Asbestos Management Plan (AMP) for this building provided to Fuss & O'Neill by the Client.

## Scope of Work

Periodic surveillance involves the visual reassessment of any ACBM or assumed ACBM in the AMP for Sarah Noble Intermediate School. The date of the periodic surveillance, as well as the location of each area, was noted along with any changes of the ACBM condition. The results of this surveillance are listed in the periodic surveillance form included in this report.

## Discussion

During this surveillance, no changes in the condition of the ACBM identified in the AMP were observed. Specific ACBM locations are listed in the attached periodic surveillance form.

AHERA regulations pertain to interior identified or assumed ACBM and limited exterior ACBM. AHERA regulations do include ACBM located on exterior porticos, covered walkways, and mechanical equipment used to condition interior building air. Suspect ACBM has not been previously identified in these areas at the Sarah Noble Intermediate School; however, suspect asbestos-containing asphaltic roofing materials (built-up roofing, base flashing, sealants, waterproofing, etc.) were noted on the building exterior. In accordance with EPA National Emission Standards for Hazardous Air Pollutants (NESHAP), prior to disturbance, samples of these suspect ACBM must be collected and analyzed for asbestos content.

## Conclusion

The majority of the previously identified ACBM were observed to be in similar condition to the most recent 6-month periodic surveillance.

If renovation or demolition activities are scheduled that will impact identified or suspect (assumed) ACBM, the ACBM or assumed ACBM must be removed by a CTDPH-licensed Asbestos Abatement

Contractor, or sampled to determine asbestos content prior to disturbance. This is a CTDPH Standards for Asbestos Abatement requirement, as well as an EPA NESHAP requirement.

Report prepared by Environmental Stacy Vanderveer.

Reviewed by:



Eduardo Miguel Marques  
Senior Environmental Analyst



Jared D. Smith, CSP  
Senior Project Manager

## 6-Month Periodic Surveillance Form

Local Education Agency (LEA): New Milford Public Schools.  
 Facility Address: Sarah Noble Intermediate School, 25 Sunny Valley Road, New Milford, CT 06776  
 Date of Surveillance: April 30, 2019

### ACBM 6-Month Surveillance Report

Asbestos-Containing Building Material	Location	Previous Condition	Present Condition	Change in Condition (Yes/No)	Estimated Damaged Quantity	Comments
Brown Mastic Associated with Blackboards and Tackboards – (material enclosed within sheetrock walls)	Classrooms and Corridors	IA	IA	No	NA	Material assumed to be ACBM; recommend sampling prior to disturbance
Adhesive Associated with Blackboards & Tackboards	Classrooms	IA	IA	No	NA	Material assumed to be ACBM; recommend sampling prior to disturbance
White Fire Door Insulation	Throughout Building	IA	IA	No	NA	Not Regulated by AHERA; for Informational Purposes Only. Material must be Managed/Disposed of as ACM. Maintain under O & M Plan Material assumed to be ACBM; recommend sampling prior to disturbance. Door identified at Gym by Stairwell 7 was determined to contain 5% Vermiculite (Sample IDs: 0124BH-01A, 0124BH-01B, 0124BH-01C.)



Asbestos-Containing Building Material	Location	Previous Condition	Present Condition	Change in Condition (Yes/No)	Estimated Damaged Quantity	Comments
White Pipe Insulation	Tunnels and Wall Cavities	IA	IA	No	NA	Material assumed to be ACBM; recommend sampling prior to disturbance
White Mudded Pipe Fitting Insulation	Boiler Room (Mech. Room 197) – on boilers, 2 fittings on each	--	G	--	NA	Material newly identified April 2019. Material assumed to be ACBM; recommend sampling prior to disturbance
White Roping associated with Old Water Tank 1' Diameter Pipe Connector	Boiler Room (Mech. Room 197; located to left of stairs coming down from door)	D	D	No	4 LF	Material Damaged at the Boiler Room Old Water Tank Material assumed to be ACBM; recommend sampling to determine ACBM content
White Insulation Associated with Old Water Tank	Boiler Room (Mech. Room 197; located to left of stairs coming down from door)	SD	SD	Yes	20 SF	Material Damaged at the Boiler Room Old Water Tank Material assumed to be ACBM; recommend sampling to determine ACBM content
Cloth Wrap on Ducts	Boiler Room (Mech. Room 197), Throughout Building Within Walls and Plenum Space	G	G	No	NA	Material assumed to be ACBM; recommend sampling prior to disturbance
Duct Insulation Glue	Boiler Room (Mech. Room 197), Throughout Building Within Walls and Plenum Space	IA	IA	No	NA	Material assumed to be ACBM; recommend sampling prior to disturbance
Gray Duct Sealant	Throughout Building Within Walls and Plenum Space	IA	IA	No	NA	Material assumed to be ACBM; recommend sampling prior to disturbance

Asbestos-Containing Building Material	Location	Previous Condition	Present Condition	Change in Condition (Yes/No)	Estimated Damaged Quantity	Comments
Interior Boiler Components	Boiler Room (Mech. Room 197)	IA	IA	No	NA	Material assumed to be ACBM; recommend sampling prior to disturbance
White 12" x 12" Floor Tiles (Multicolor Pattern) & Associated Adhesive	Classrooms and Corridors	G	G	No	NA	Material assumed to be ACBM; recommend sampling prior to disturbance
Blue 12" x 12" Floor Tiles (Multicolor Pattern) & Associated Adhesive	Classrooms and Corridors	G	G	No	NA	Material assumed to be ACBM; recommend sampling prior to disturbance
Multicolor Pattern 12" x 12" Floor Tiles (Blue-Yellow- Red-Green-Black) & Associated Adhesive	Classrooms and Corridors	G	G	No	NA	Material assumed to be ACBM; recommend sampling prior to disturbance
White with Blue Specks 12" x 12" Floor Tiles & Associated Adhesive	Cafeteria	G	G	No	NA	Material assumed to be ACBM; recommend sampling prior to disturbance
Tan with Tan and Black/Dark Brown Streaks 12" x 12" Floor Tiles & Associated Adhesive	Ramp Loading at Cafeteria	G	G	No	NA	Material assumed to be ACBM; recommend sampling prior to disturbance
Yellow Carpet Glue	Room 136,159, 160C, 161,163, 163A. Media Center and Main Offices. Newly identified carpeted areas - 160A, 160B, 160D, 173, 205, 205A, 205C, 205D, 206, 206A	IA	IA	Yes	NA	Additional carpeted areas observed and assumed to contain yellow carpet glue – inventory updated. Material assumed to be ACBM; recommend sampling prior to disturbance
Black Paper/Mastic	Gymnasiums underneath Hardwood Floors (Gymnasium 112 & Multi-purpose Room 200)	IA	IA	No	NA	Material assumed to be ACBM; recommend sampling prior to disturbance

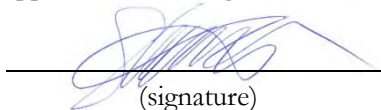
Asbestos-Containing Building Material	Location	Previous Condition	Present Condition	Change in Condition (Yes/No)	Estimated Damaged Quantity	Comments
Textured Blue Floor Coating	Kitchen, Custodial Closet 101A	G	G	No	NA	Material assumed to be ACBM; recommend sampling prior to disturbance
Gray Ceramic Floor Tiles & Associated Grout & Adhesive	Bathrooms and Custodial Closets	G	G	No	NA	Material assumed to be ACBM; recommend sampling prior to disturbance
Adhesive associated with Gray Rubber Stair treads	Stairwells, interior corridor stair at elevator	IA	IA	No	NA	Material assumed to be ACBM; recommend sampling prior to disturbance
Blue Cove Base & Associated Adhesive	Classrooms and Corridors	G	G	Yes	NA	Samples collected from Corridor outside Room 234 and Room 231 by Door. Sampled materials were determined to be Non-ACBM. Sample IDs: 2-20-PB-06A, 2-20-PB-06B, 2-20-PB-07A, and 2-20-PB-07B. Materials to be confirmed homogenous during subsequent surveillances
Gray Ceramic Cove Base & Associated Grout & Adhesive	Bathrooms and Custodial Rooms	G	G	No	NA	Material assumed to be ACBM; recommend sampling prior to disturbance
Wall Paper (Tan Canvas Wall Cover and associated Adhesive)	Rooms 136, 136A, 206, 206A, and Media Center	G	G	No	NA	Additional locations identified April 2019. Material assumed to be ACBM; recommend sampling prior to disturbance
White Gypsum Board & Joint/Taping Compound	Throughout Building	G	G	No	NA	Material assumed to be ACBM; recommend sampling prior to disturbance

Asbestos-Containing Building Material	Location	Previous Condition	Present Condition	Change in Condition (Yes/No)	Estimated Damaged Quantity	Comments
Gray Plaster Wall	Boiler Room & Records	D	D	No	20 SF	Material Damaged at the Boiler Room & Records Material assumed to be ACBM; recommend sampling to determine ACBM content
White 2" x 2" Suspended Ceiling Tiles	Staff 127, 131A, 136, 136A, 160, 160A, 160C, 160D, 163, 163A, Bathrooms, Media Center, Kitchen and Cafeteria	G	G	No	NA	Additional locations identified April 2019. Material assumed to be ACBM; recommend sampling prior to disturbance
White 2" x 4" Suspended Ceiling Tiles	Throughout Building	G	G	No	NA	Material assumed to be ACBM; recommend sampling prior to disturbance
White Sink Undercoating	Throughout Classrooms	G	G	No	NA	Not Required by AHERA; for informational purposes only Material must be Managed and Disposed of as ACM Prior to Disturbance. Material assumed to be ACBM; recommend sampling prior to disturbance
Grey Sink Undercoating	Art Rooms 194, 195 & 196 (double sinks); Rooms 140, 173 & 208 (single sinks)	--	G	--	NA	Material newly identified April 2019. Not Required by AHERA; for informational purposes only Material must be Managed and Disposed of as ACM Prior to Disturbance. Material assumed to be ACBM; recommend sampling prior to disturbance

Asbestos-Containing Building Material	Location	Previous Condition	Present Condition	Change in Condition (Yes/No)	Estimated Damaged Quantity	Comments
Red Firestop Caulk	Throughout Building	G	G	No	NA	Material assumed to be ACBM; recommend sampling prior to disturbance
Tan Backsplash Glue Daubs	Science Rooms	IA	IA	No	NA	Material assumed to be ACBM; recommend sampling prior to disturbance
Gray Interior Column Caulking	Throughout Building	G	G	No	NA	Material assumed to be ACBM; recommend sampling prior to disturbance
Gray Floor Leveling Material	Throughout Building	IA	IA	No	NA	Material assumed to be ACBM; recommend sampling prior to disturbance
White with Yellow, Brown, Black Ceramic Wall Tile & Associated Grout & Adhesive	Kitchen	G	G	No	NA	Material assumed to be ACBM; recommend sampling prior to disturbance
Stage Curtain	Stage	G	G	No	NA	Not Required by AHERA; for informational purposes only Material must be Managed and Disposed of as ACM Prior to Disturbance. Material assumed to be ACBM; recommend sampling prior to disturbance

Conditions: D = Damaged; G = Good; IA = Inaccessible; NA = Not Applicable; SD = Significant Damage

Surveillance conducted by: Stacy Vanderveer  
(print name)

  
(signature)

I, the LEA's Designated Person, have read and understood the findings noted above: \_\_\_\_\_ Date: \_\_\_\_\_

## Section 6

---

Schaghticoke Middle School

# Six-Month AHERA Asbestos Periodic Surveillance

For Compliance With:  
State of Connecticut Department of Public Health (CTDPH)  
Asbestos-Containing Material in Schools Regulation  
(Sections 19a-333-1 through 19a-333-13)  
and  
United States Environmental Protection Agency (EPA)  
Asbestos Hazard Emergency Response Act (AHERA)  
(Title 40 CFR Part 763, Subpart E)

**Schaghticoke Middle School**  
New Milford, Connecticut

April 2019



**Fuss & O'Neill, Inc.**  
146 Hartford Road  
Manchester, CT 06040

## Introduction

Fuss & O'Neill, Inc. (Fuss & O'Neill) was retained by New Milford Public Schools (the "Client") to conduct six-month periodic surveillances of previously identified asbestos-containing building materials (ACBM) at Schaghticoke Middle School. This periodic surveillance was conducted in accordance with the requirements of the State of Connecticut Department of Public Health (CTDPH) Asbestos-Containing Material in Schools regulation (Section 19a-333-1 through 19a-333-13) and the United States Environmental Protection Agency (EPA) Asbestos Hazard Emergency Response Act (AHERA) regulation (Title 40 CFR Part 763, Subpart E).

On April 30, 2019, Stacy Vanderveer of Fuss & O'Neill performed the periodic surveillance. Ms. Vanderveer is a CTDPH-licensed Asbestos Inspector (refer to *Appendix A*). This surveillance was based on available information in the existing Asbestos Management Plan (AMP) for this building provided to Fuss & O'Neill by the Client.

## Scope of Work

Periodic surveillance involves the visual reassessment of any ACBM or assumed ACBM in the AMP for Schaghticoke Middle School. The date of the periodic surveillance, as well as the location of each area, was noted along with any changes of the ACBM condition. The results of this surveillance are listed in the periodic surveillance form included in this report.

## Discussion

During this surveillance, minor changes in the condition of the ACBM identified in the AMP were observed. Specific ACBM locations are listed in the attached periodic surveillance form.

AHERA regulations pertain to interior identified or assumed ACBM and limited exterior ACBM. AHERA regulations do include ACBM located on exterior porticos, covered walkways, and mechanical equipment used to condition interior building air. Suspect ACBM has not been previously identified in these areas at the Schaghticoke Middle School; however, suspect asbestos-containing asphaltic roofing materials (built-up roofing, base flashing, sealants, waterproofing, etc.) were noted on the building exterior. In accordance with EPA National Emission Standards for Hazardous Air Pollutants (NESHAP), prior to disturbance, samples of these suspect ACBM must be collected and analyzed for asbestos content.

## Conclusion

The majority of the previously identified ACBM were observed to be in similar condition to the most recent 6-month periodic surveillance.

If renovation or demolition activities are scheduled that will impact identified or suspect (assumed) ACBM, the ACBM or assumed ACBM must be removed by a CTDPH-licensed Asbestos Abatement



Contractor, or sampled to determine asbestos content prior to disturbance. This is a CTDPH Standards for Asbestos Abatement requirement, as well as an EPA NESHAP requirement.

Report prepared by Environmental Technician Stacy Vanderveer.

Reviewed by:



Eduardo Miguel Marques  
Senior Environmental Analyst



Jared D. Smith, CSP  
Senior Project Manager

## 6-Month Periodic Surveillance Form

Local Education Agency (LEA): New Milford Public Schools.  
 Facility Address: Schaghticoke Middle School, 23 Hipp Road, New Milford, CT 06776  
 Date of Surveillance: April 30, 2019

### ACBM 6-Month Surveillance Report

Asbestos-Containing Building Material	Location	Previous Condition	Present Condition	Change in Condition (Yes/No)	Estimated Damaged Quantity	Comments
Pipe Fitting Insulation	Boiler Room, Air handler Rooms 11 & 12 (across from room 207), 13 & 14 (behind room 201), 15 & 16/chiller pump room (near room 222, behind copy room), and corridor by media center	G	G	No	NA	Material was not observed in Boiler Room (Material may exist within plastic fitting covers)
12" x 12" Older Tan Floor Tile & Associated Mastic	Rooms 109, 112/114, 117, 188, 189, 192, Cafeteria Storage Room, Gymnasium, Nurse's Office 197 exam room	D	D	No	12 LF	Additional location identified April 2019. Approximately 6 LF of tile broken and loose at threshold of two doorways to Gymnasium Storage Room. Observed pieces of broken tile along wall and underneath gymnasium equipment. Recommend cleanup and or abatement of damaged material. Maintain under O&M Plan to reduce further damage
Pump Insulation	Air handler room 15 & 16 (behind room 201)	G	G	No	NA	Material assumed to be ACBM; recommend sampling prior to disturbance.
Black Window Sills	Throughout building	G	G	No	NA	Material assumed to be ACBM; recommend sampling prior to disturbance.
Tackboard/Blackboard Adhesives	Throughout building	IA	IA	No	NA	Material assumed to be ACBM; recommend sampling prior to disturbance.

Asbestos-Containing Building Material	Location	Previous Condition	Present Condition	Change in Condition (Yes/No)	Estimated Damaged Quantity	Comments
Vapor Barriers/Tar Paper Located Below Wood Flooring	Gymnasium and multi-purpose room	IA	IA	No	NA	Material assumed to be ACBM; recommend sampling prior to disturbance.
Gypsum Board & Joint/Taping Compound	Throughout building	G	G	No	NA	Samples collected from Room 209 and Room 210 in May 2018. Sampled materials were determined to be Non-ACBM. Sample IDs: 20180531GI-05A, 20180531GI-05B, 20180531GI-05C, 20180531GI-06A, 20180531GI-06B, and 20180531GI-06C. Materials to be confirmed homogenous during subsequent surveillances
Cove Base (Black, Blue, Brown, Dark Gray, Gray) & Associated Adhesive	Throughout building	G	F	Yes	< 3 SF	Band Room 112/114 – damaged/missing cove base on risers; adhesive exposed. Rooms 224 & 226 – missing cove base under counters; adhesive exposed. 2 <sup>nd</sup> floor custodial office at elevator – missing cove base; adhesive exposed. Samples of Gray Cove Base and Adhesive collected from Room 209 and Room 210 in May 2018. Sampled materials were determined to be Non-ACBM. Sample IDs: 20180531GI-03A, 20180531GI-03B, 20180531GI-04A, and 20180531GI-04B, Materials to be confirmed homogenous during subsequent surveillances
Interior Boiler Components	Boiler Room	IA	IA	No	NA	Material assumed to be ACBM; recommend sampling prior to disturbance.

Asbestos-Containing Building Material	Location	Previous Condition	Present Condition	Change in Condition (Yes/No)	Estimated Damaged Quantity	Comments
Blue 12" x 12" Floor Tile & Associated Adhesive	Rooms 100, 103, 105, 110, 110A, 141 – 155, 175, 176, 177, 196, 198, 201, 205 – 208, 209A - B, 211 – 213, 217 – 232, Men's Restroom opposite 205	G	G	No	NA	Additional locations identified April 2019. Material assumed to be ACBM; recommend sampling prior to disturbance.
Bright Blue 12" x 12" Floor Tile & Associated Adhesive	Room 108	G	G	No	NA	Material assumed to be ACBM; recommend sampling prior to disturbance.
Dark Blue 12" x 12" Floor Tile & Associated Adhesive	Media Office	G	G	No	NA	Material assumed to be ACBM; recommend sampling prior to disturbance.
Light Blue 12" x 12" Floor Tile & Associated Adhesive	Rooms 100, 102, 104, 116, 118, 198, 216, 241, 244, 246, 247, 249, 250, 1 <sup>st</sup> Floor Corridor, Media & Copy Room, Boys' Restroom by 208, Women's Restroom by 208, Stage	G	G	No	NA	Additional locations identified April 2019. Material assumed to be ACBM; recommend sampling prior to disturbance.
Green 12" x 12" Floor Tile & Associated Mastic	2 <sup>nd</sup> Floor Corridor	G	G	No	NA	Material assumed to be ACBM; recommend sampling prior to disturbance.
Light Blue/Green 12" x 12" Floor Tile & Associated Mastic	Rooms 214, 230, 243, Cafeteria, Kitchen, Stairwells, 2 <sup>nd</sup> Floor Corridor, Custodial Closet by 109, Music 114 Practice Room 3 & adjacent office	G	G	No	NA	Additional locations identified April 2019. Material assumed to be ACBM; recommend sampling prior to disturbance.
Pink 12" x 12" Floor Tile & Associated Adhesive	Rooms 215, 245, 248, 251	G	G	No	NA	Material assumed to be ACBM; recommend sampling prior to disturbance.

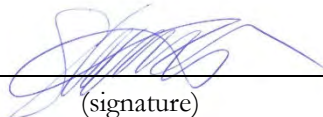
Asbestos-Containing Building Material	Location	Previous Condition	Present Condition	Change in Condition (Yes/No)	Estimated Damaged Quantity	Comments
Carpet Adhesive	Rooms 101, 106, 120, 174, 181, 183, 203, 204, 204A-B, 209, 210, Media & Media Computer Room	IA	IA	No	NA	Samples of Carpet Adhesive collected from Room 209 and Room 210 in May 2018. Sampled materials were determined to be Non-ACBM. Sample IDs: 20180531GI-02A, and 20180531GI-02B. Materials to be confirmed homogenous during subsequent surveillances
Adhesive associated with Rubber Flooring	Multi-Purpose Room	IA	IA	No	NA	Material assumed to be ACBM; recommend sampling prior to disturbance.
Blue Ceramic Tile & Associated Grout & Thin Set	Boys' Restroom by 241, Girls' Restroom by 243	G	G	No	NA	Material assumed to be ACBM; recommend sampling prior to disturbance.
1" Yellow Ceramic Floor Tile & Associated Grout & Thin set	Boys' Restroom by 205, Girls' Restroom by Room 207, Boys' Locker Room, Girls' Locker Room, Boys' Restroom by 108, Girls' Restroom by 110A, Boys' Restroom by 114, Girls' Restroom by 195	G	D	Yes	< 1 SF	Additional locations identified April 2019. Damaged/missing tiles in Boys' Locker Room. Material assumed to be ACBM; recommend sampling prior to disturbance.
2' x 4' Suspended Ceiling Tile	Rooms 100, 101, 103, 105, 106, 108 – 110, 110A, 112, 116 -118, 120, 141 – 155, 174 – 176, 181, 183, 188, 189, 192, 196, 198, 201, 203 – 232, 241, 243 – 251, 2 <sup>nd</sup> Floor Corridor, 1 <sup>st</sup> Floor Corridor, Boys Restroom by 208, Boys Restroom by 241, Girls' Restroom by 207, Girls' Restroom by 243, Custodian Closet, HVAC Room	G	G	No	NA	Material assumed to be ACBM; recommend sampling prior to disturbance.

Asbestos-Containing Building Material	Location	Previous Condition	Present Condition	Change in Condition (Yes/No)	Estimated Damaged Quantity	Comments
2' x 2' Suspended Ceiling Tile	Room 183	G	G	No	NA	Material assumed to be ACM; recommend sampling prior to disturbance.
Gray Sink Undercoating	Rooms 101, 142, 181, 207, 212-217	G	G	No	NA	Additional location identified April 2019. Not Regulated by AHERA; for Informational Purposes Only. Material must be Managed/Disposed of as ACM. Maintain under O & M Plan. Material assumed to be ACM; recommend sampling prior to disturbance.
Black Sink Undercoating	Room 110, Main Office kitchenette, Nurse's Office 197	--	G	--	NA	Material newly identified April 2019. Not Regulated by AHERA; for Informational Purposes Only. Material must be Managed/Disposed of as ACM. Maintain under O & M Plan. Material assumed to be ACM; recommend sampling prior to disturbance.
Black Composite Laboratory Countertops	Rooms 214, 215, 216, 244-249	G	G	No	NA	Additional locations identified April 2019. Not Regulated by AHERA; for Informational Purposes Only. Material must be Managed/Disposed of as ACM. Maintain under O & M Plan. Material assumed to be ACM; recommend sampling prior to disturbance.
Black Composite Laboratory Desktops	Rooms 214, 215 & 216	G	G	No	NA	Additional location identified April 2019. Not Regulated by AHERA; for Informational Purposes Only. Material must be Managed/Disposed of as ACM. Maintain under O & M Plan. Material assumed to be ACM; recommend sampling prior to disturbance.

Asbestos-Containing Building Material	Location	Previous Condition	Present Condition	Change in Condition (Yes/No)	Estimated Damaged Quantity	Comments
Black Composite Laboratory Test Tube Rack	Rooms 215 & 216	G	G	No	NA	Not Regulated by AHERA; for Informational Purposes Only. Material must be Managed/Disposed of as ACM. Maintain under O & M Plan. Material assumed to be ACBM; recommend sampling prior to disturbance.
Interior & Exterior Cementitious Paneling	Cafeteria	G	G	No	NA	Exterior Panels are Not Regulated by AHERA; for Informational Purposes Only. Material must be Managed/Disposed of as ACM. Maintain under O & M Plan. Material assumed to be ACBM; recommend sampling prior to disturbance.
White Interior Window Glazing Compounds	Room 154, 208 – 211, 212 – 217, 224 231, 241 – 251, Cafeteria	G	G	No	NA	Material assumed to be ACBM; recommend sampling prior to disturbance.
White Interior Column Caulking Compounds	Throughout building	G	G	No	NA	Material assumed to be ACBM; recommend sampling prior to disturbance.

Conditions: D = Damaged; G = Good; IA = Inaccessible; NA = Not Applicable

Surveillance conducted by: Stacy Vanderveer  
(print name)



(signature)

I, the LEA's Designated Person, have read and understood the findings noted above: \_\_\_\_\_ Date: \_\_\_\_\_

## Appendix A

---

### Fuss & O'Neill CTDPH Asbestos Inspector License and EPA Accreditation



1000583 01 AB 0.405 \*\*AUTO 12 0 1264 06040-599246 C01-P005851



SANDRA L GUZMAN  
FUSS & O'NEILL INC  
146 HARTFORD RD  
MANCHESTER CT 06040-5992



Dear SANDRA L GUZMAN,

Attached you will find your validated certificate for the coming year. Should you have any questions about your certificate renewal, please do not hesitate to write or call:

Department of Public Health  
P.O. Box 340308  
M.S.#12MQA  
Hartford, CT 06134-0308

(860) 509-7603  
oplc.dph@ct.gov  
www.ct.gov/dph/license

Sincerely,

RAUL PINO, MD, MPH, COMMISSIONER  
DEPARTMENT OF PUBLIC HEALTH

EMPLOYER'S COPY

STATE OF CONNECTICUT  
DEPARTMENT OF PUBLIC HEALTH

NAME  
SANDRA L GUZMAN

VALIDATION NO. 03-691581      CERTIFICATE NO. 000335      CURRENT THROUGH 08/31/19

PROFESSION  
ASBESTOS CONSULTANT-INSP/MGMT PLANNER

SIGNATURE      COMMISSIONER

STATE OF CONNECTICUT  
DEPARTMENT OF PUBLIC HEALTH

PURSUANT TO THE PROVISIONS OF THE GENERAL STATUTES OF CONNECTICUT

THE INDIVIDUAL NAMED BELOW IS CERTIFIED  
BY THIS DEPARTMENT AS A

ASBESTOS CONSULTANT-INSP/MGMT PLANNER

SANDRA L GUZMAN

CERTIFICATE NO  
000335

CURRENT THROUGH  
08/31/19

VALIDATION NO.  
03-691581

SIGNATURE

COMMISSIONER

INSTRUCTIONS:

1. Detach and sign each of the cards on this form.
2. Display the large card in a prominent place in your office or place of business.
3. The wallet card is for you to carry on your person. If you do not wish to carry the wallet card, place it in a secure place.
4. The employer's copy is for persons who must demonstrate current licensure/certification in order to retain employment or privileges. The employer's card is to be presented to the employer and kept by them as a part of your personnel file. Only one copy of this card can be supplied to you.

WALLET CARD

STATE OF CONNECTICUT  
DEPARTMENT OF PUBLIC HEALTH

NAME  
SANDRA L GUZMAN

VALIDATION NO. 03-691581      CERTIFICATE NO. 000335      CURRENT THROUGH 08/31/19

PROFESSION  
ASBESTOS CONSULTANT-INSP/MGMT PLANNER

SIGNATURE      COMMISSIONER

1000583-00005988-00000001 of 00000001-C01-at1000101-1264-00585

# ATC GROUP SERVICES LLC

104 East 25th Street, New York, NY 10010  
(212) 353-8280

## Sandra Guzman

*Has Successfully Completed the Accredited 4 Hour EPA-AHERA/ASHARA under 40 CFR 763 and the  
New York State Department of Health Approved Course for*

### Asbestos Inspector Refresher

*On*

*November 14, 2018*

**\*\* Please note that the official record of successful completion is the DOH 2832 Certificate of Asbestos Safety Training.\*\***

**This course meets the requirements of TSCA Title II**

**Certificate#: NYS - RHHIR-21969**

**Exam date: 11-14-18**

**Expiration Date: 11-14-19**

**Course Location: 21 West 38<sup>th</sup> Street New York, NY**

*Signed: *  
**Fitzroy N. Scott, Director of Training**

# ATC GROUP SERVICES LLC

104 East 25th Street, New York, NY 10010  
(212) 353-8280

*Certifies that*

## Sandra Guzman

*Has Successfully Completed the Accredited EPA-AHERA/ASHARA under 40 CFR 763 and the  
New York State Department of Health Approved Course and Examination for*

### Asbestos Management Planner Refresher

*On*

**November 14, 2018**

*This course meets the requirements of TSCA Title II*

**Certificate#: NYS - MPR - 21991**

**Exam Date: 11-14-18**

**Expiration Date: 11-14-19**

**Course Location: 21 West 38<sup>th</sup> Street, NY**

**Signed:**



**Fitzroy N. Scott, Director of Training**

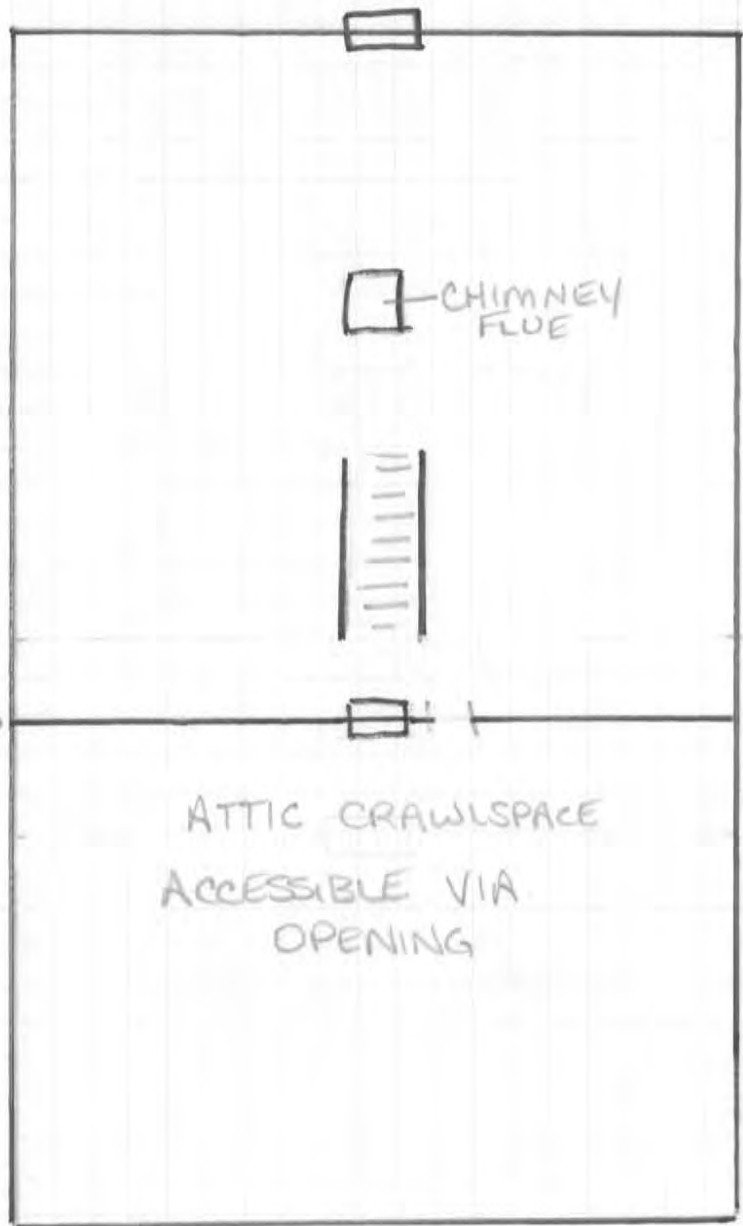
## Appendix B

---

### Floor Plans

# FACILITIES ADMIN BLDG - ATTIC

NOT TO SCALE  
LARSON RD



ROOF  
LEVEL  
CHANGE →

ATTIC CRAWLSPACE  
ACCESSIBLE VIA  
OPENING

DANBURY RD



FUSS & O'NEILL

Prepared By

SV

Date

5/1/19

Checked By

Date

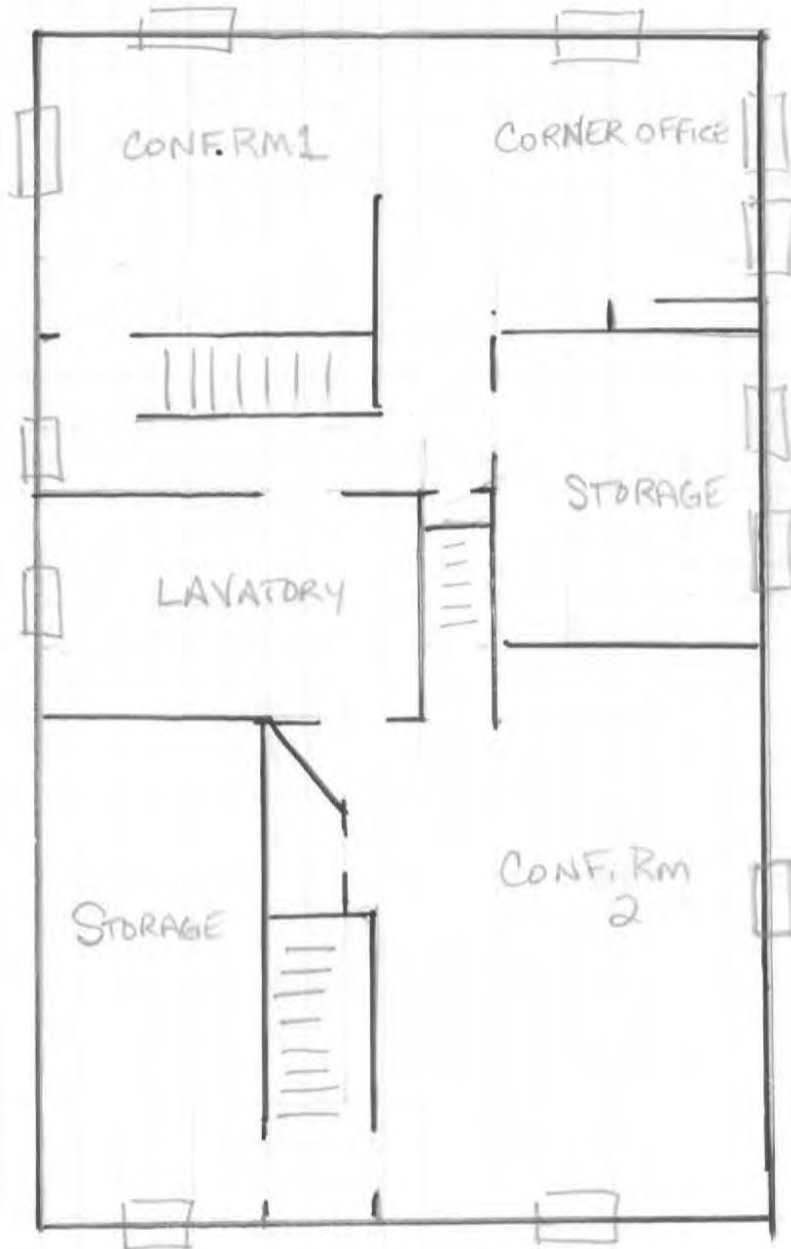
Project No

200701230.B50

Sheet No  
of

# FACILITIES ADMIN BLDG - 2nd FLOOR

Not to Scale  
Larson Rd



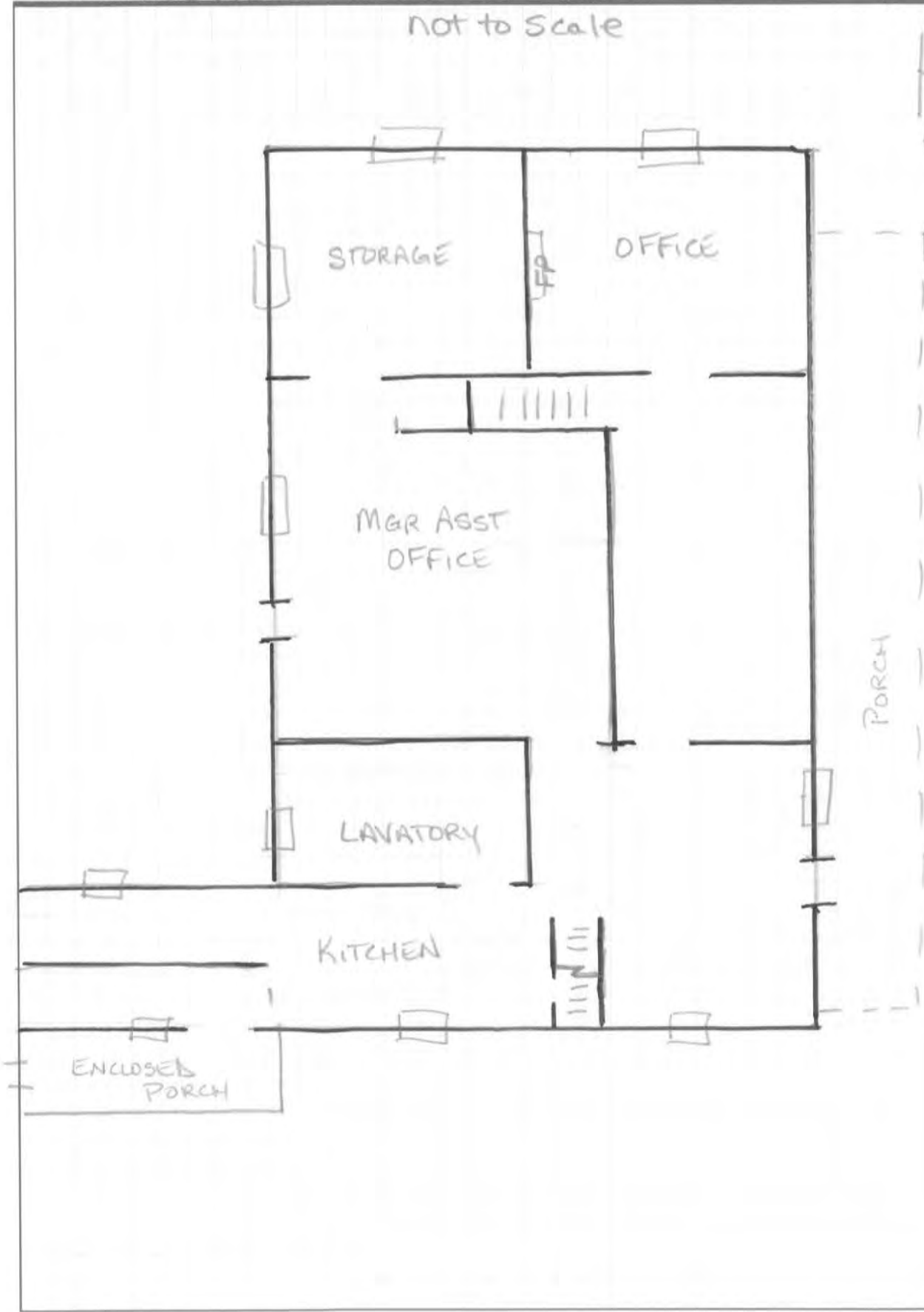
Danbury Rd

TO HIGH SCHOOL



FACILITIES ADMIN BLDG - 1<sup>ST</sup> FL

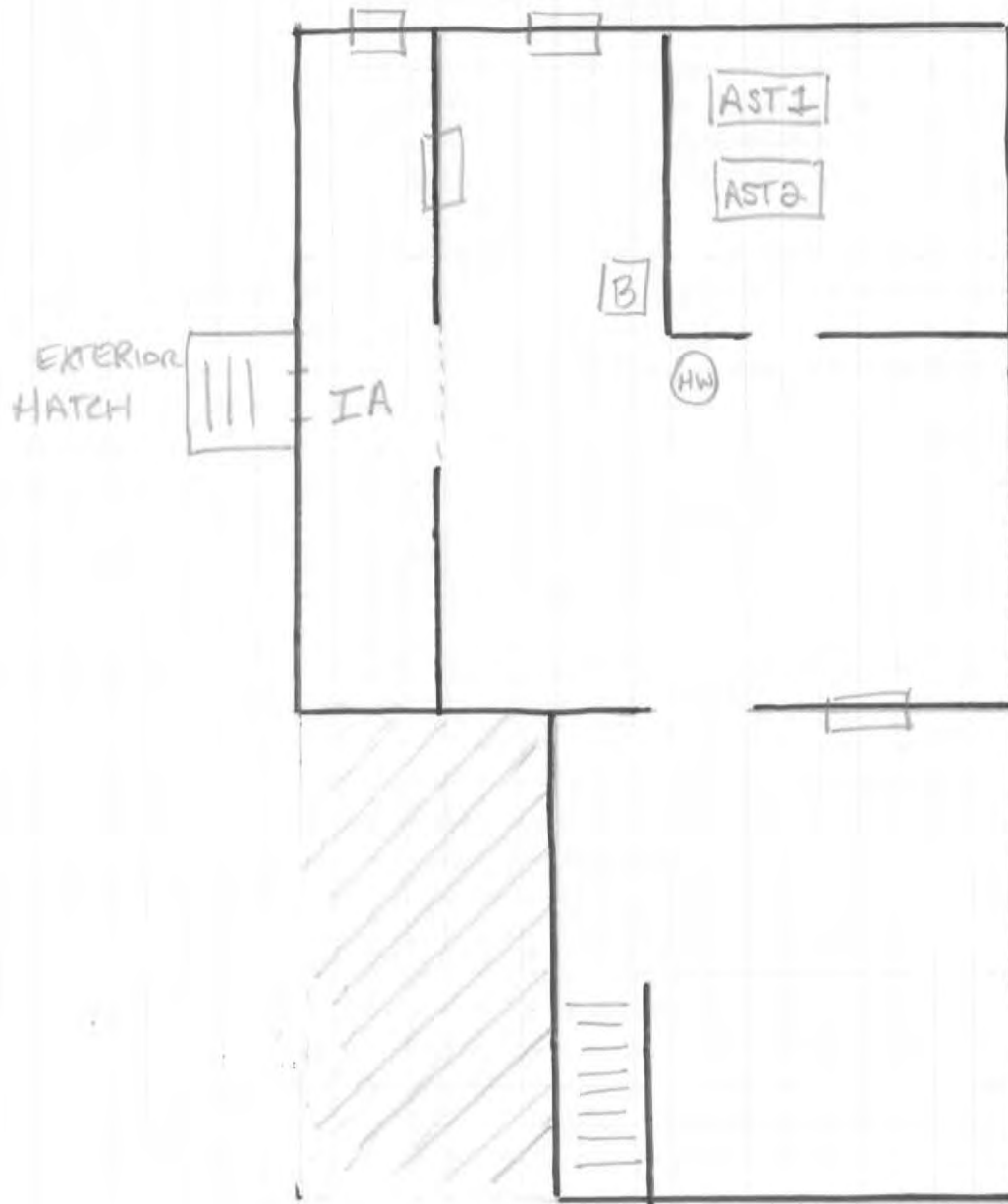
NOT TO SCALE



# FACILITIES ADMIN BLDG - BASEMENT

not to Scale  
Larson Rd

1/2



Danbury Rd

TO HIGH SCHOOL  
↙

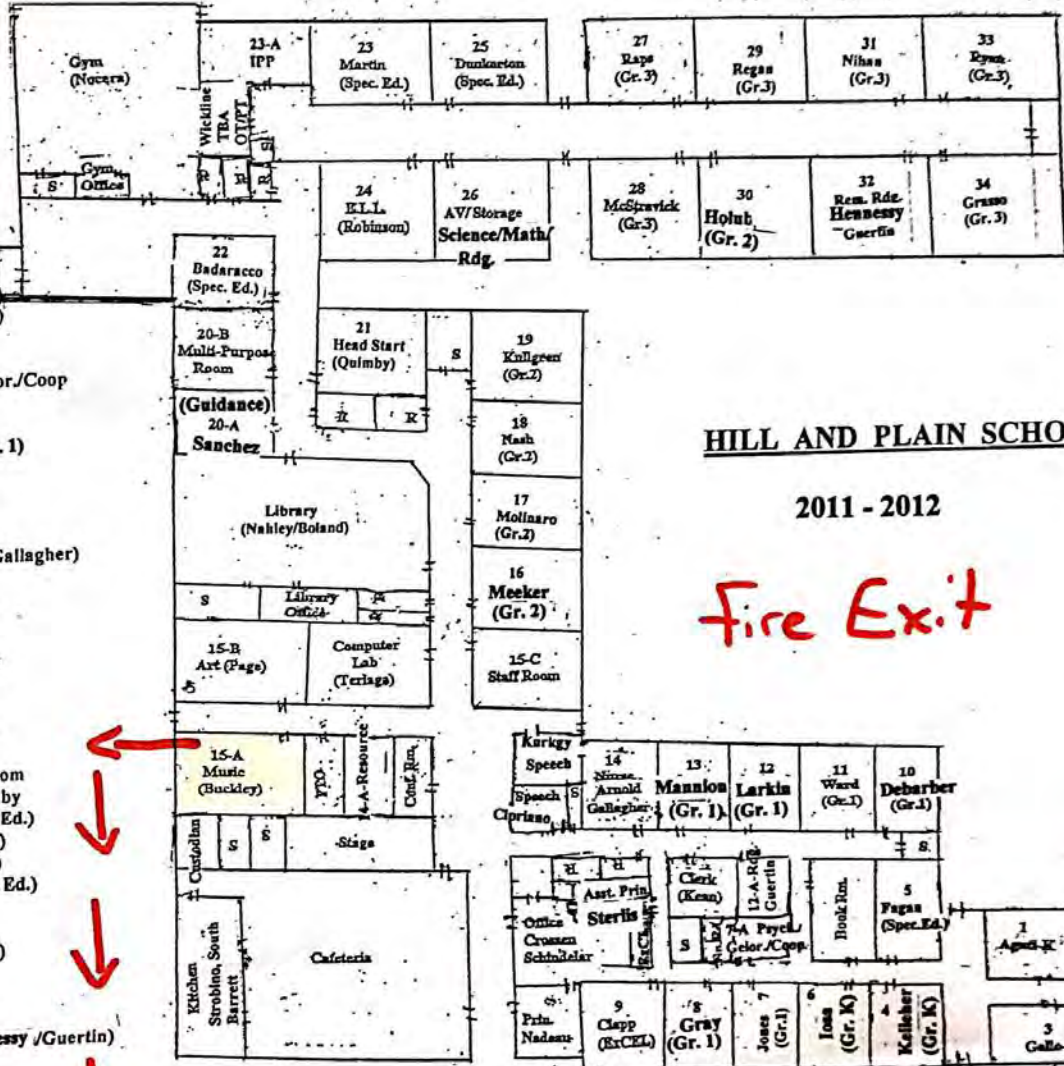


**MAP KEY:**

- T - Teacher Clerk
- P - Psychologist
- R - Rest Room
- S - Storage
- ! - Exit - Classroom
- !! - Exit - Building

**ROOM # - USAGE**

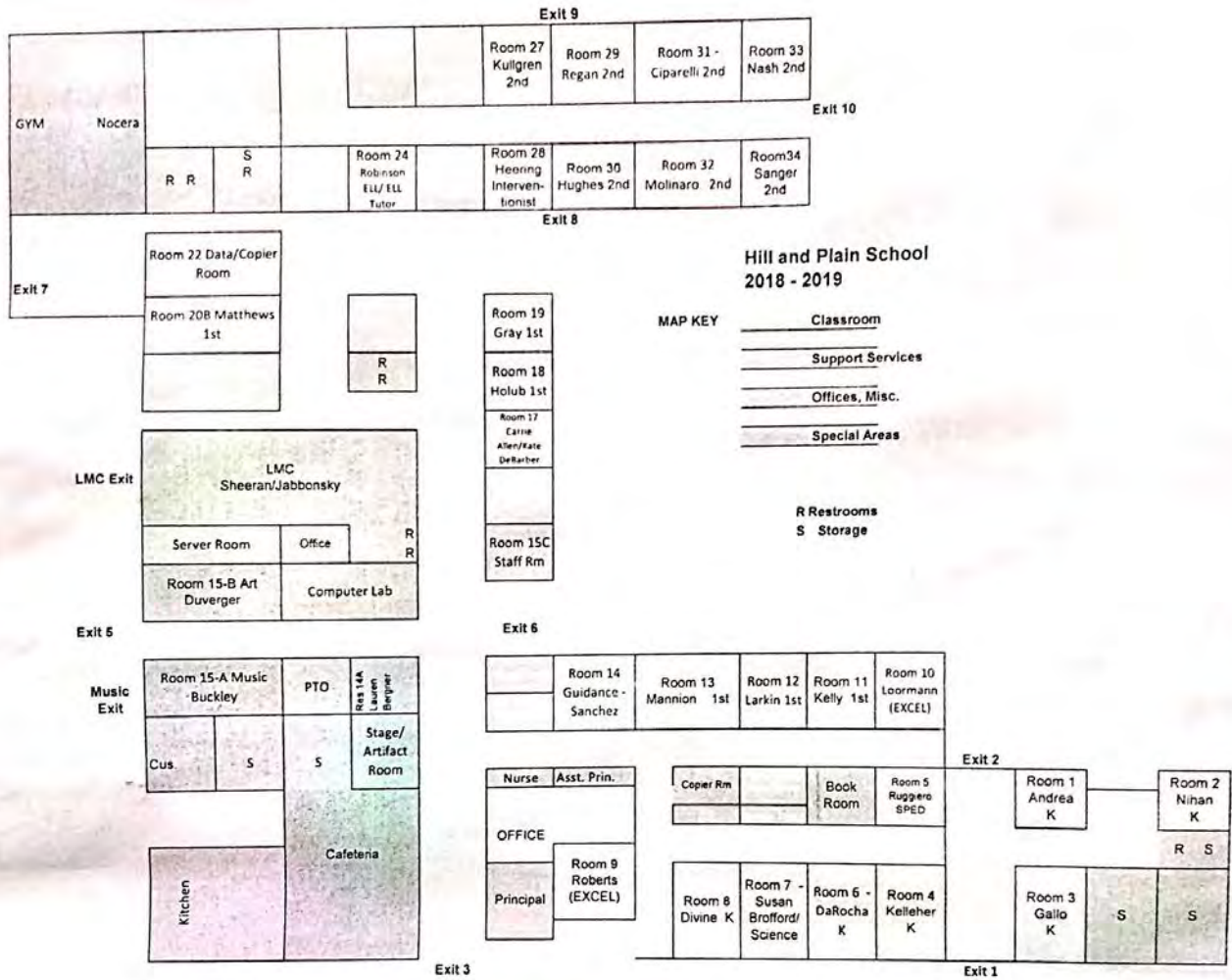
- 1 Agati (Gr. K)
- 2 Hahn (Gr. K)
- 3 Gallo (Gr. K)
- 4 Kelleher (Gr. K)
- 5 Fagan (Spec. Ed.)
- 6 Iosa (Gr. K)
- 7 Jones (Gr. 1)
- 7-A Psych./TAG-Gelor/Coop
- 8 Kewns (Gr. 1)
- 9 Clapp (ExCEL)
- 10 Debarber (Gr. 1)
- 11 Ward (Gr. 1)
- 12 Larkin (Gr. 1)
- 12-A Guertin (Rdg.)
- 13 Mannion (Gr. 1)
- 14 Nurses (Arnold/Gallagher)
- 14-A Resource
- 15-A Buckley (Music)
- 15-B Page (Art)
- 15-C Staff Room
- 16 Meeker (Gr. 2)
- 17 Molinaro (Gr. 2)
- 18 Nash (Gr. 2)
- 19 Kullgren (Gr. 2)
- 20-A Resource
- 20-B Multi-Purpose Room
- 21 Head Start - Quimby
- 22 Badaracco (Spec. Ed.)
- 23 Martin (Spec. Ed.)
- 24 Robinson (E.L.L.)
- 25 Dunkerton (Spec. Ed.)
- 26 Storage / A.V.
- 27 Raps (Gr. 3)
- 28 McStravick (Gr. 3)
- 29 Regan (Gr. 3)
- 30 Holub (Gr. 2)
- 31 Nihan (Gr. 3)
- 32 Rem. Rdg. (Hennessy /Guertin)
- 33 Ryan (Gr. 3)
- 34 Grasso (Gr. 3)

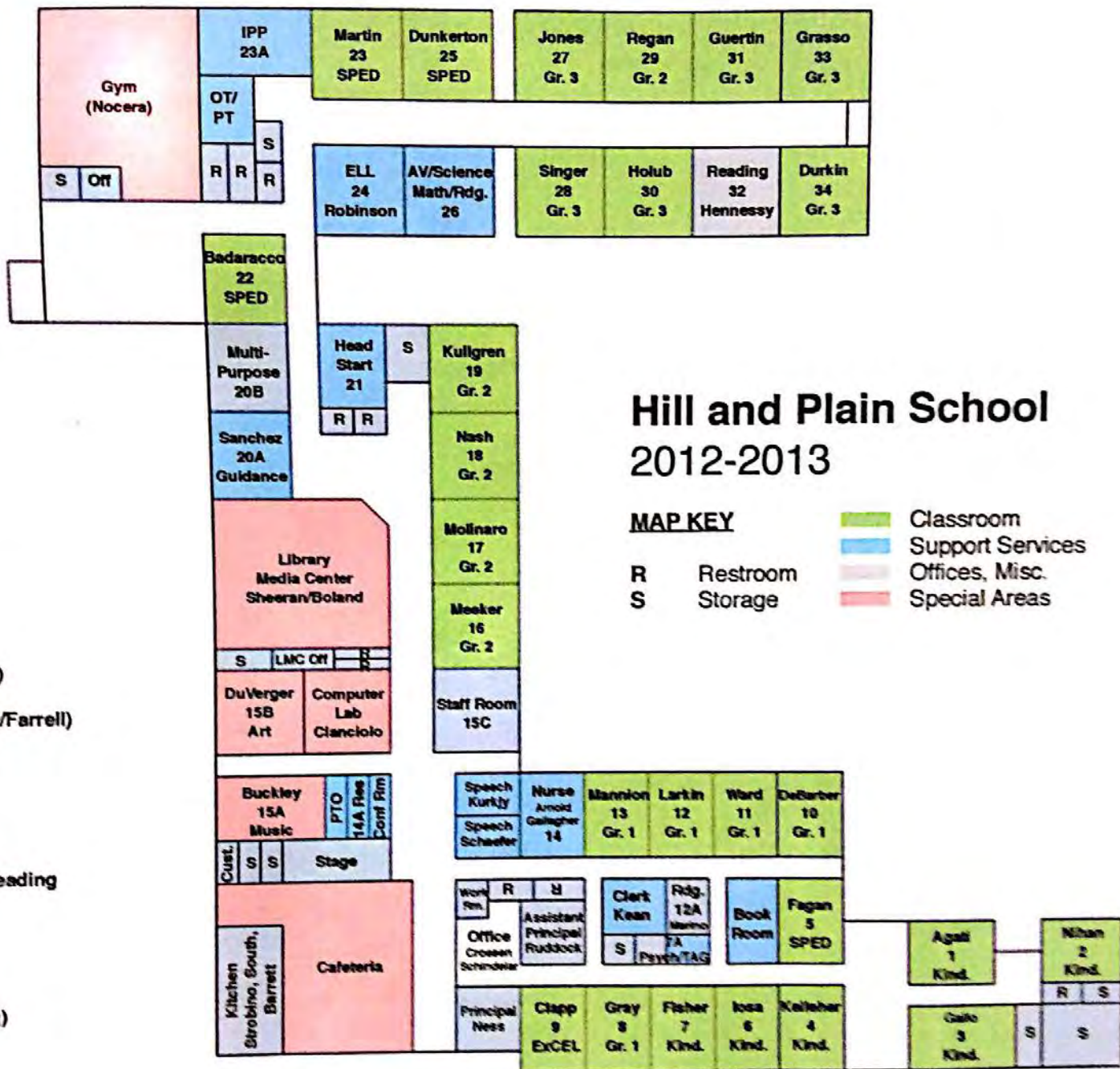


**HILL AND PLAIN SCHOOL**

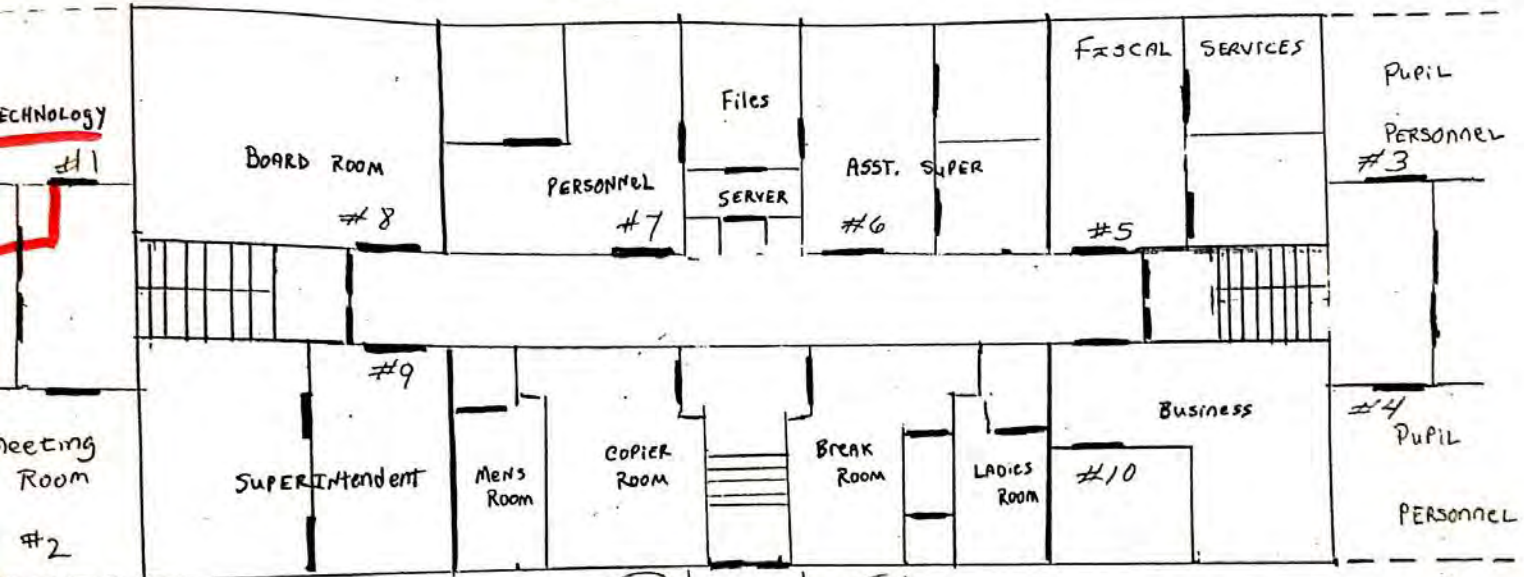
2011 - 2012

Fire Exit

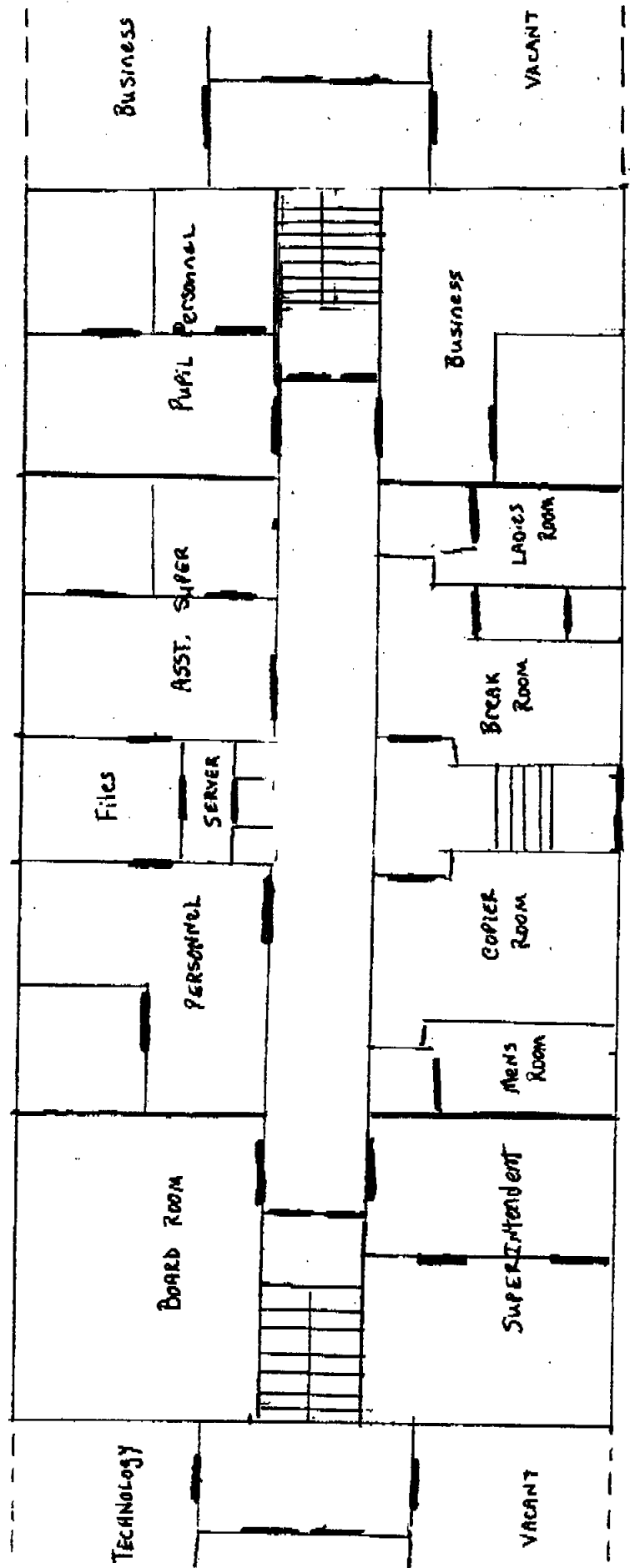




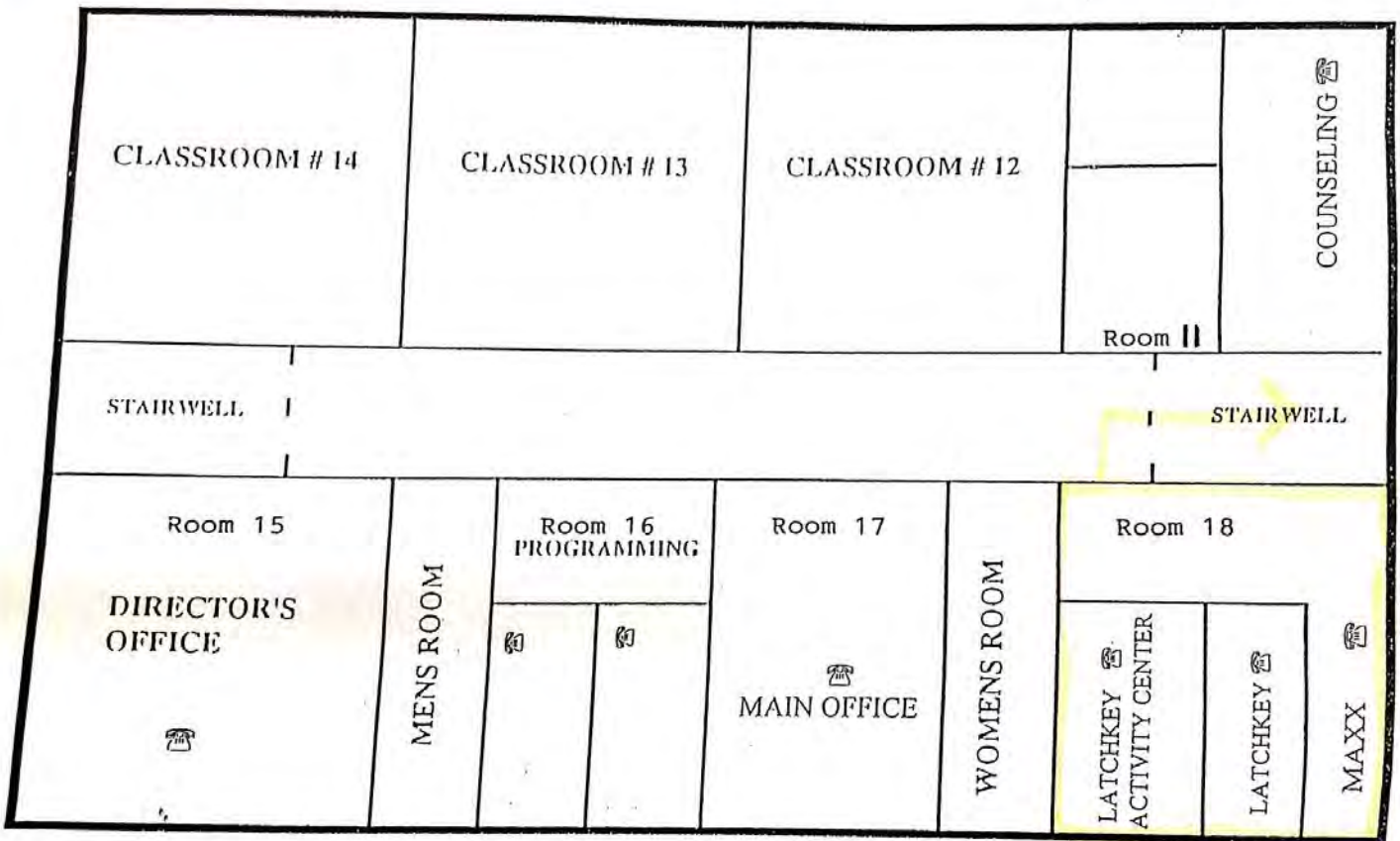
# CENTRAL OFFICE EVACUATION PLAN



CENTRAL OFFICE SO EAST STREET  
 EVACUATION PLAN  
 2nd Floor

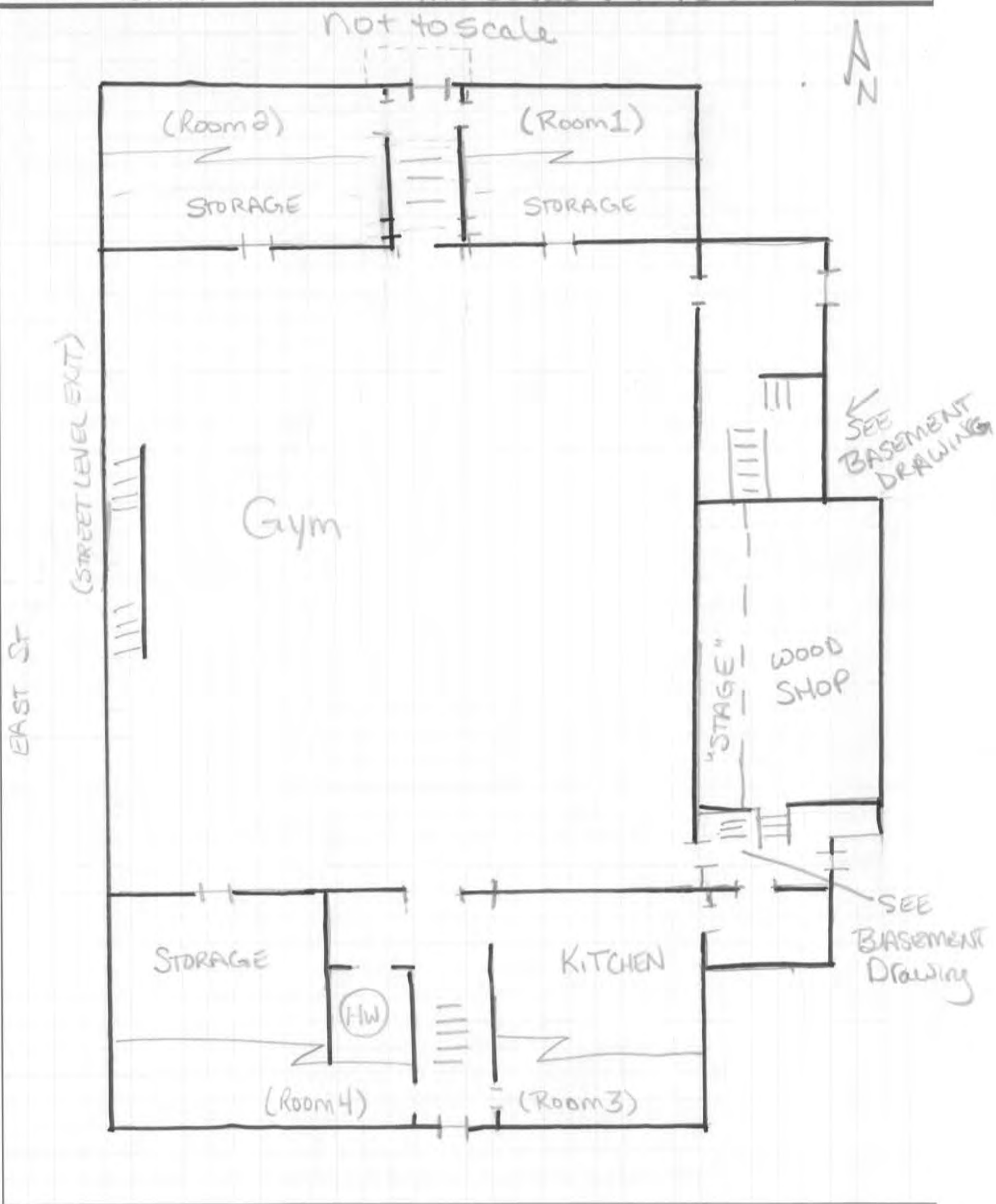


- 3. Take attendance before leaving your room and at assembly point.
- 4. Your assembly point is: **FRONT LAWN AWAY FROM BUILDING.**



# Lillis Admin Bldg - Gym Level ("1st FL")

Not to Scale



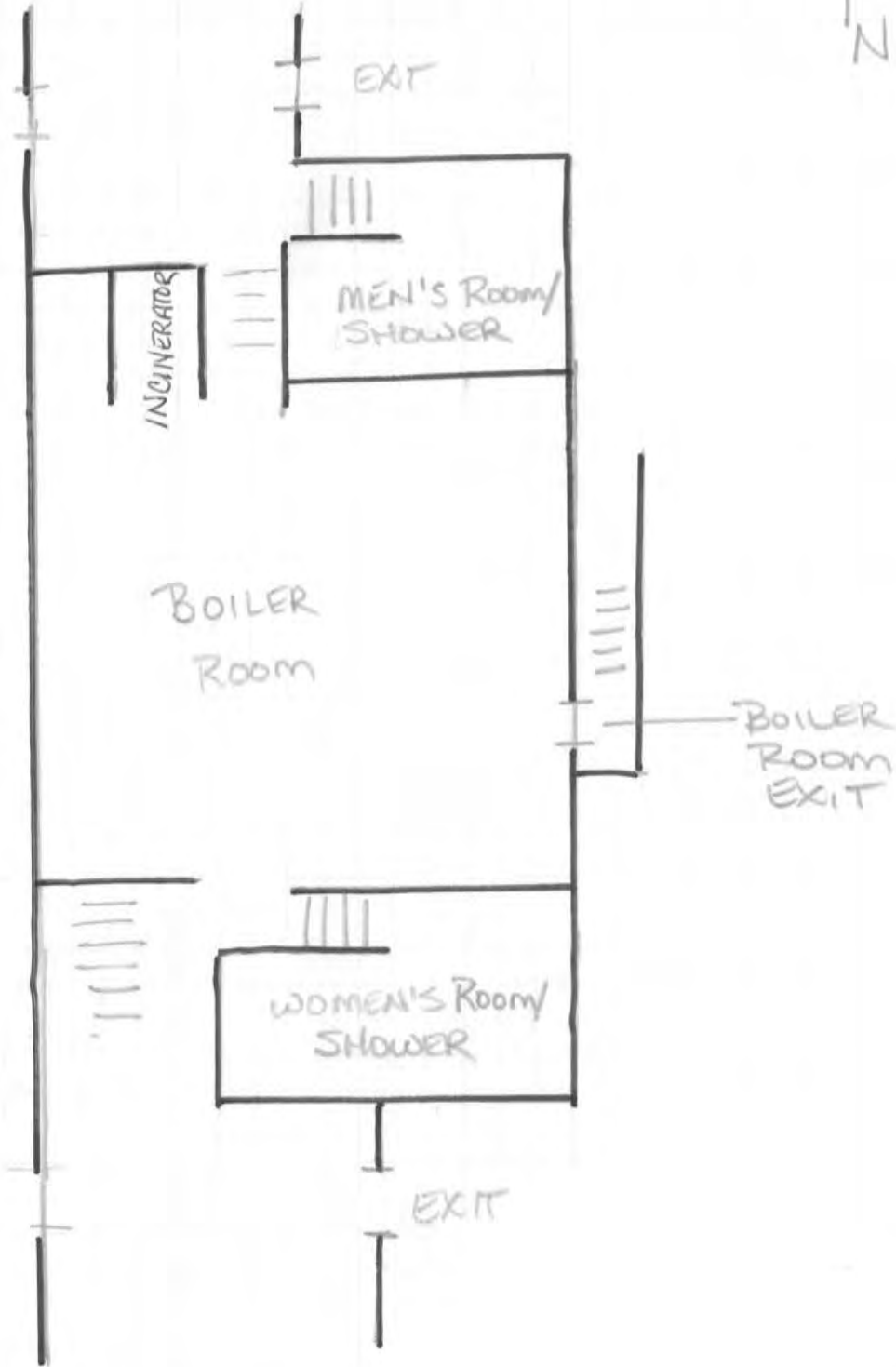
Lewis Admin Bldg - BASEMENT LEVEL (Boiler Room)

not to scale



EAST STREET ↗

(Gym)







FUSS & O'NEILL

Prepared By

Date

Checked By

Date

Project No

20071230.B50

Lillis Admin Cross-section

Sheet No  
of

N →

3rd FL (Rms 11-18)

2nd FL (Rms 5-10)

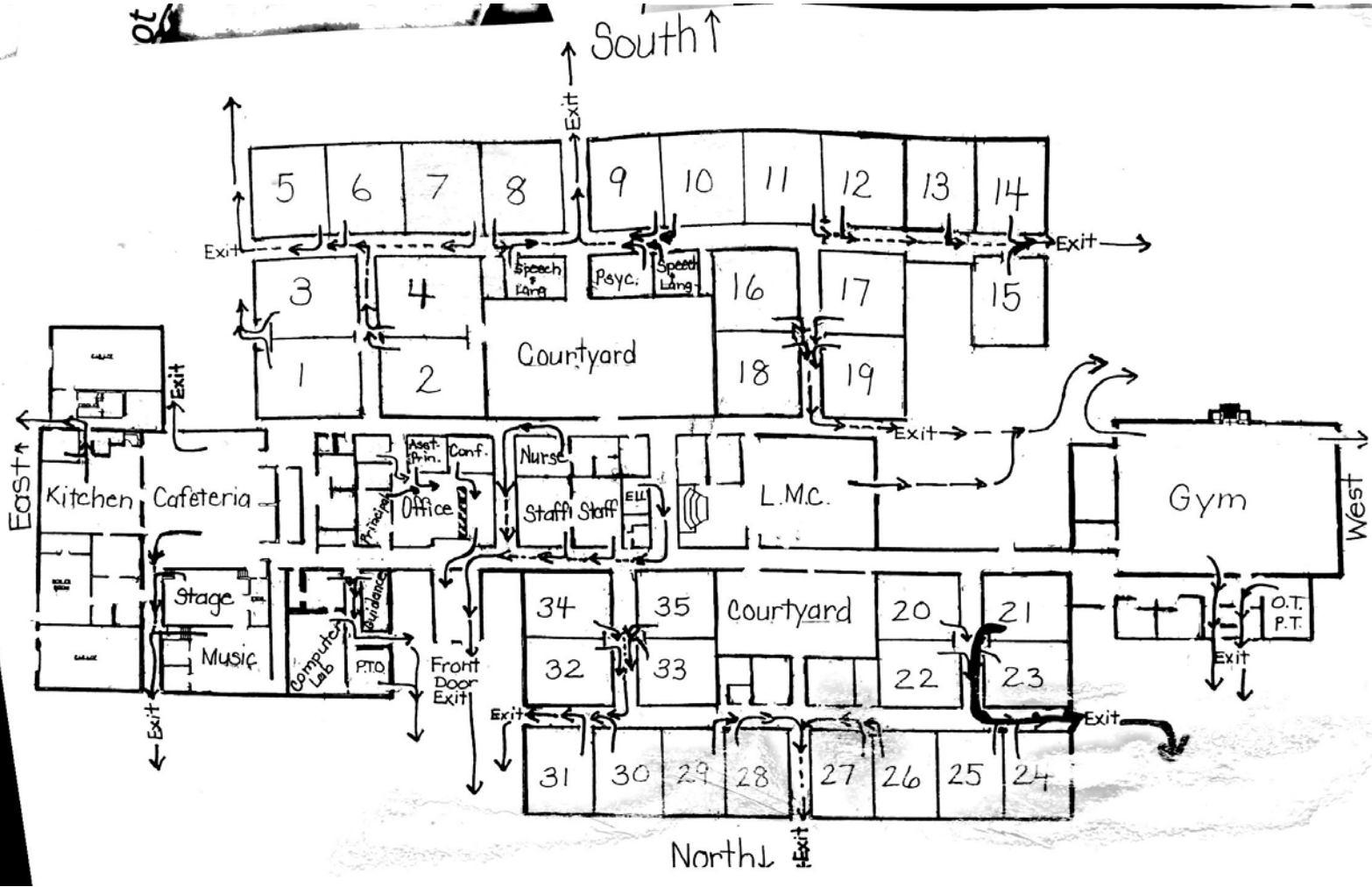
Rms 3+4  
ENTRANCE

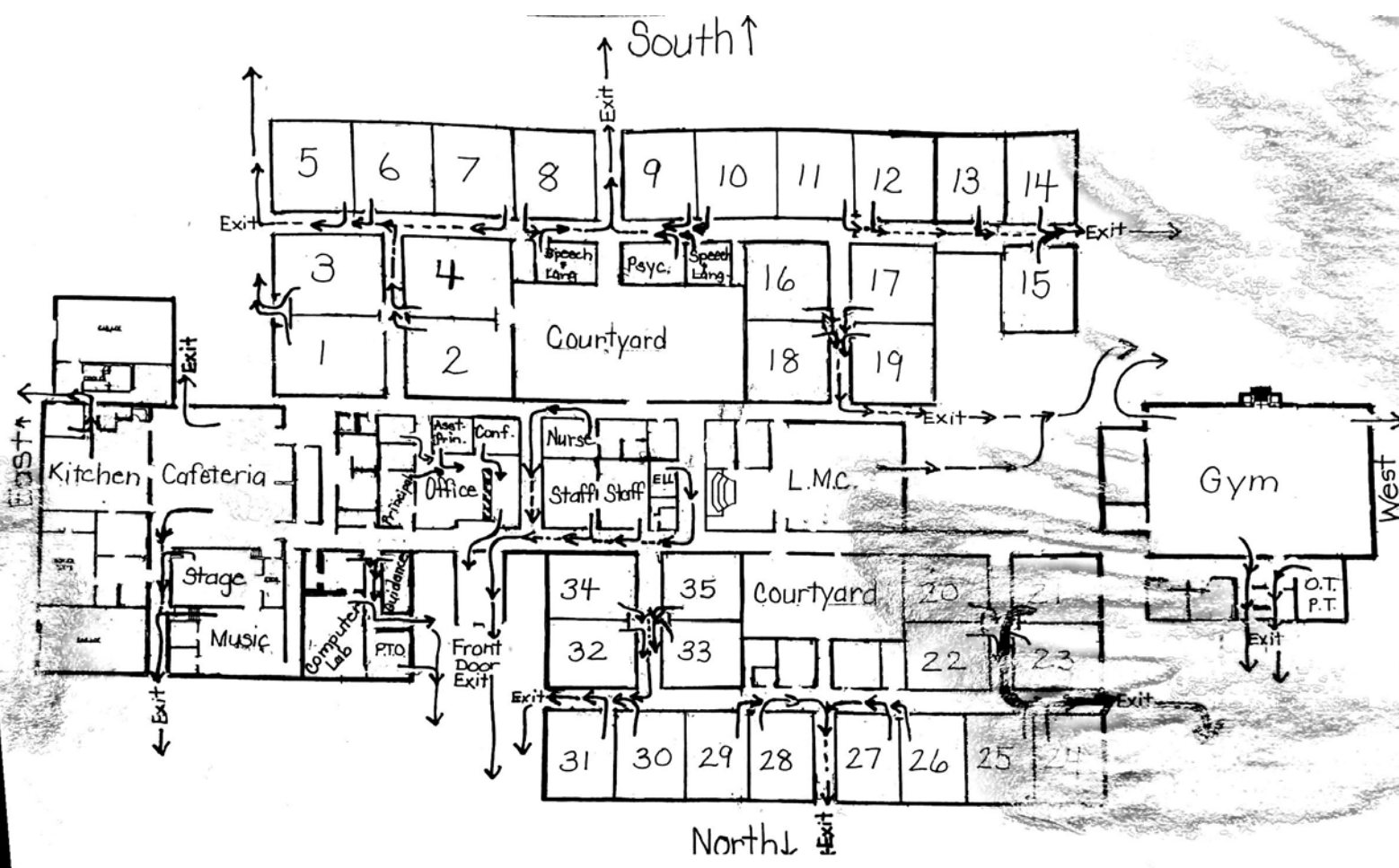
Rms 1+2, Entrance

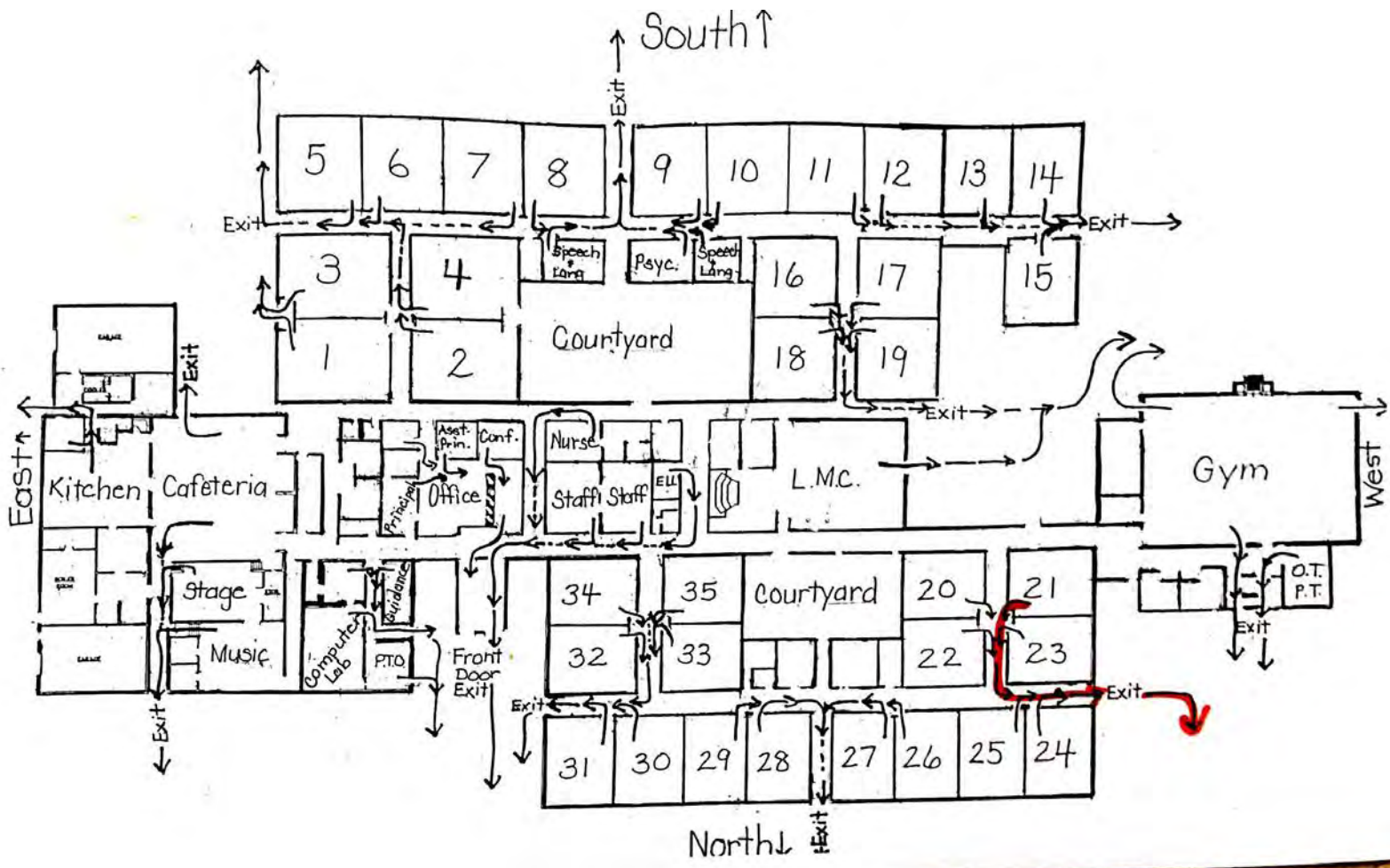
1st FL (Gym Level)

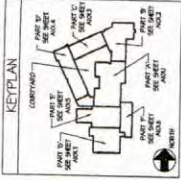
Partial  
Basement (Boiler Rm, Bathrooms/showers)

04









PROJECT NUMBER: \_\_\_\_\_  
ARCHITECT: \_\_\_\_\_  
DATE: \_\_\_\_\_  
SCALE: \_\_\_\_\_  
PROJECT NAME: \_\_\_\_\_  
PROJECT LOCATION: \_\_\_\_\_  
PROJECT OWNER: \_\_\_\_\_  
PROJECT ARCHITECT: \_\_\_\_\_  
PROJECT ENGINEER: \_\_\_\_\_  
PROJECT CONTRACTOR: \_\_\_\_\_  
PROJECT SUBMITTER: \_\_\_\_\_

**FLETCHER THOMPSON**  
ARCHITECTS/PLANNERS/INTERIOR DESIGN

FLETCHER THOMPSON, INC.  
ARCHITECTS/PLANNERS/INTERIOR DESIGN  
1000 WASHINGTON STREET, SUITE 200  
MILFORD, CONNECTICUT 06455-1204

ADDITIONS AND RENOVATIONS TO  
**NEW MILFORD INTERMEDIATE SCHOOL**  
SAS DRIVE, MILFORD, CT 06455  
NEW MILFORD, CONNECTICUT

STATE PROJECT NO. 06W-0004

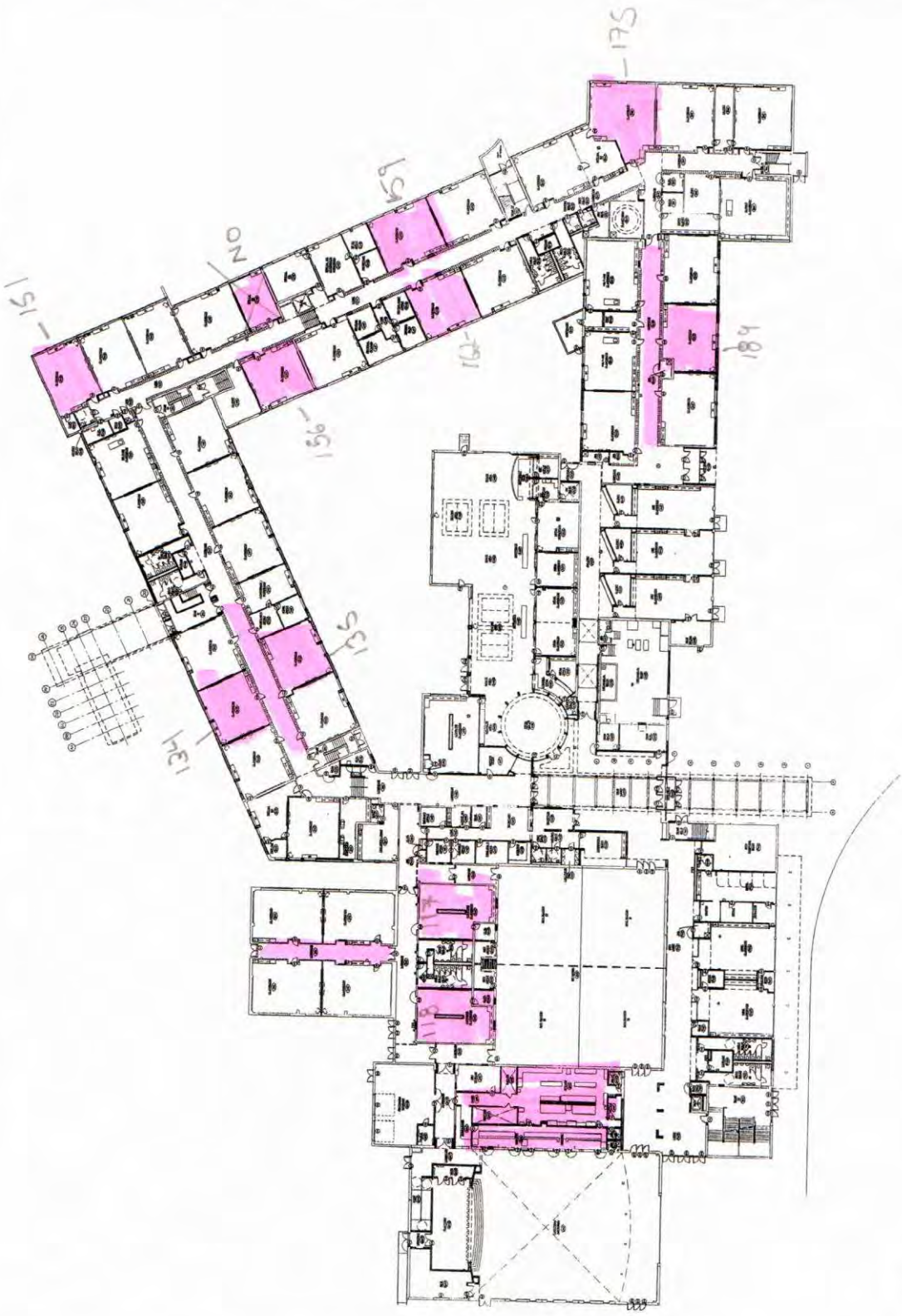
**OVERALL FIRST FLOOR PLAN**

DATE: \_\_\_\_\_  
SCALE: \_\_\_\_\_  
DATE: \_\_\_\_\_  
SCALE: \_\_\_\_\_

DATE: SEPTEMBER 1, 1999  
SCALE: 1" = 20'-0"

PROJECT: 49802.06

DRAWING: **A101.0**



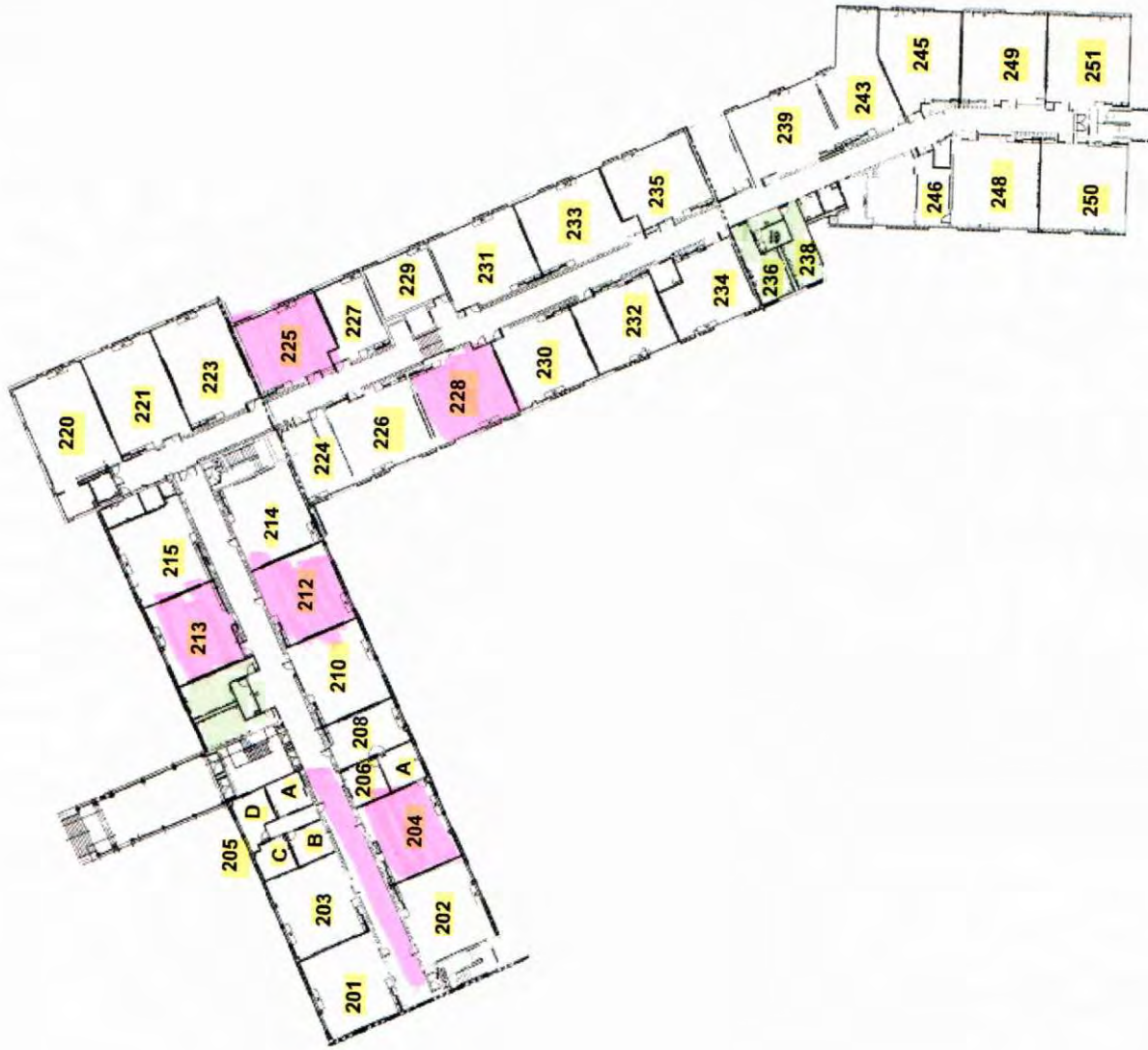
NOT TO SCALE

DATE: SEPTEMBER 1, 1999  
SCALE: 1" = 20'-0"

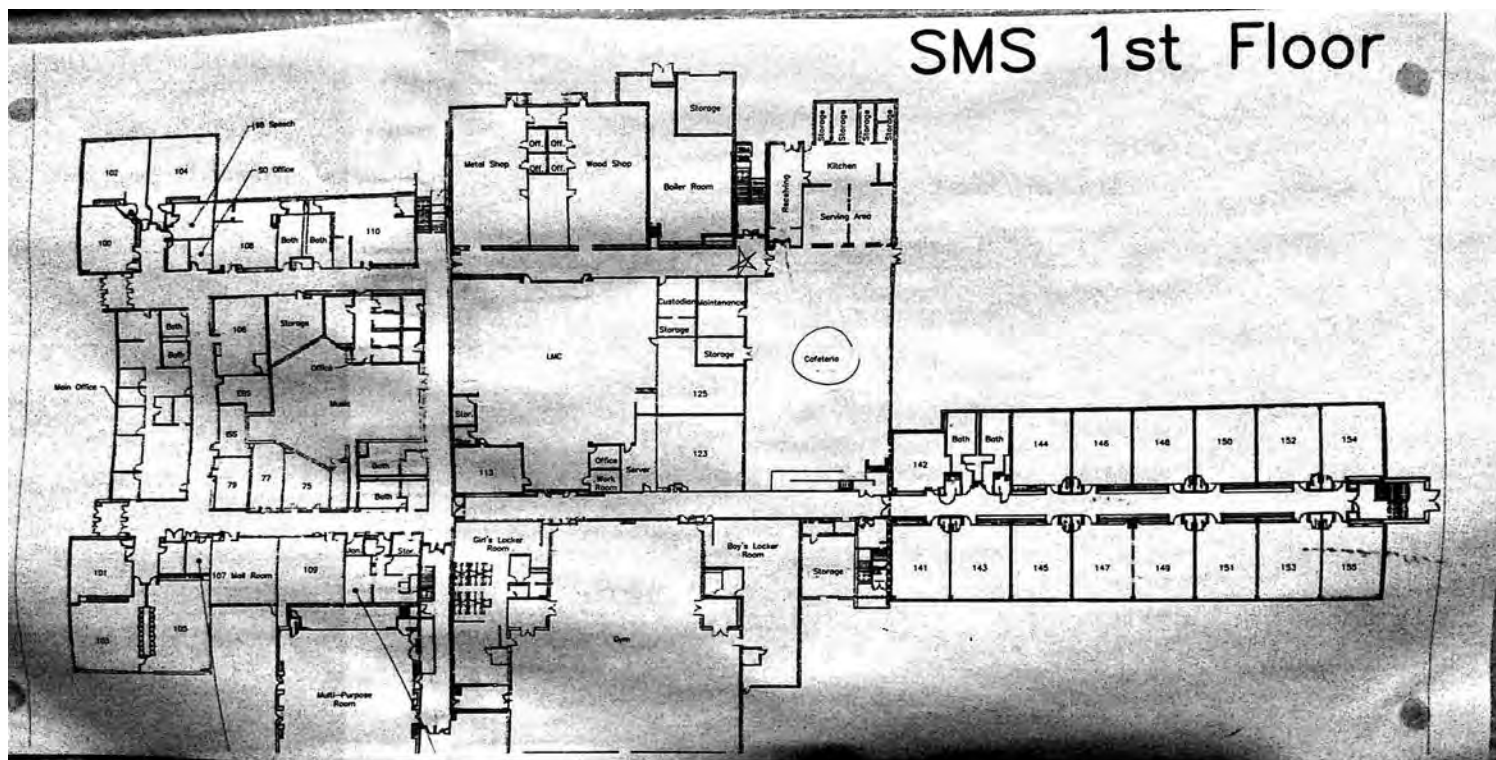
PROJECT: 49802.06

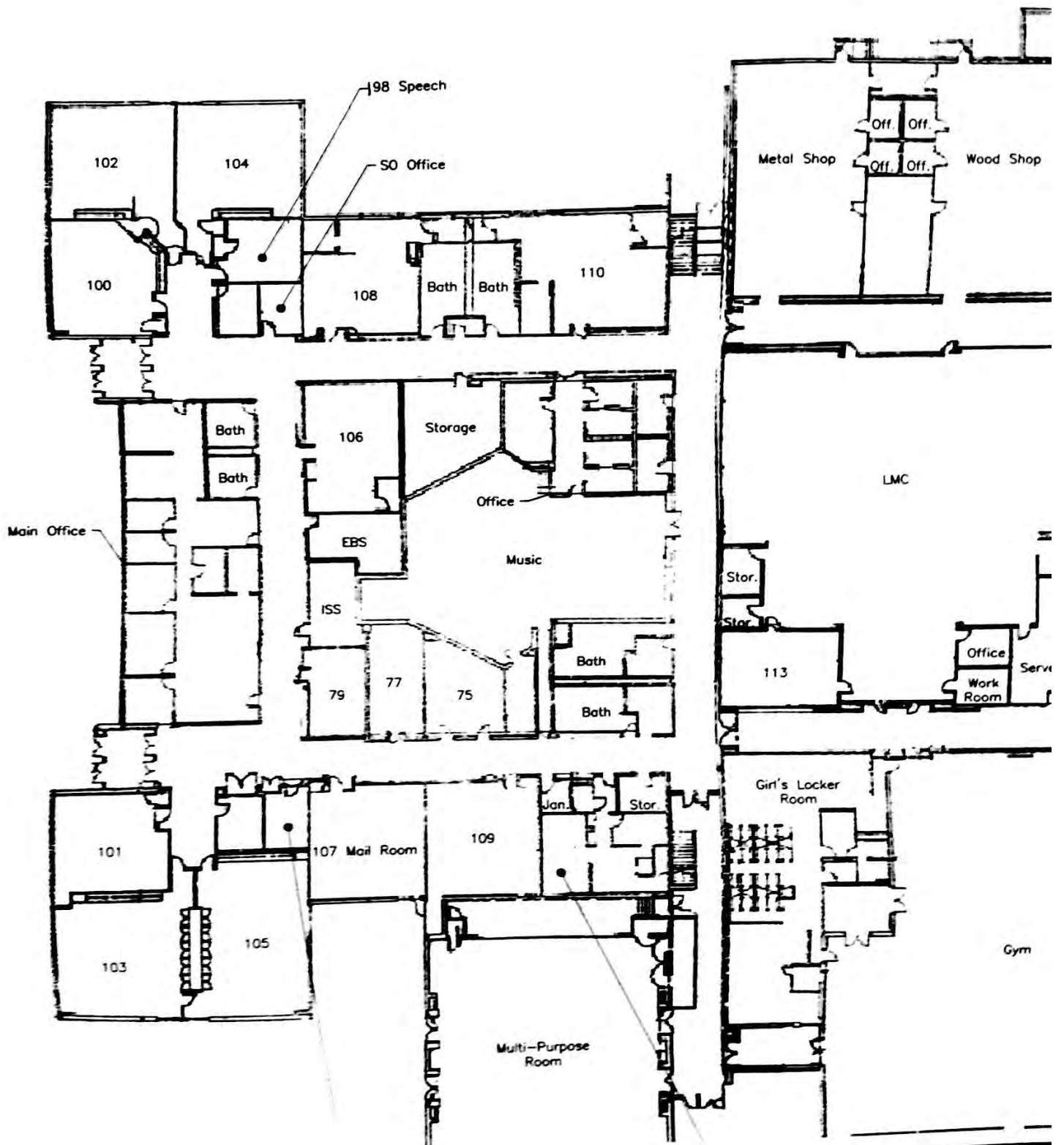
DRAWING: A101.0

**SNIS 2nd FL.**



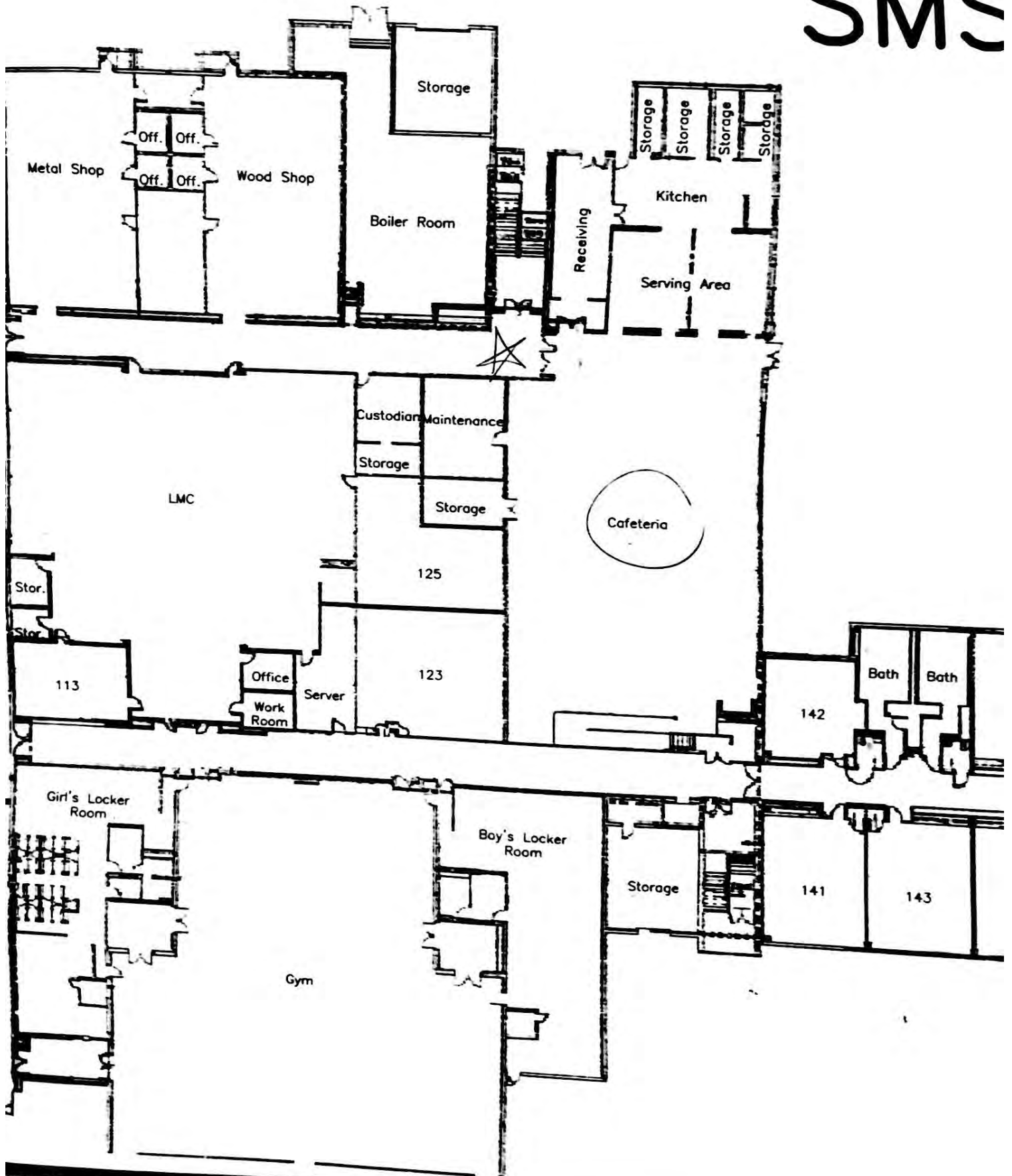
# SMS 1st Floor



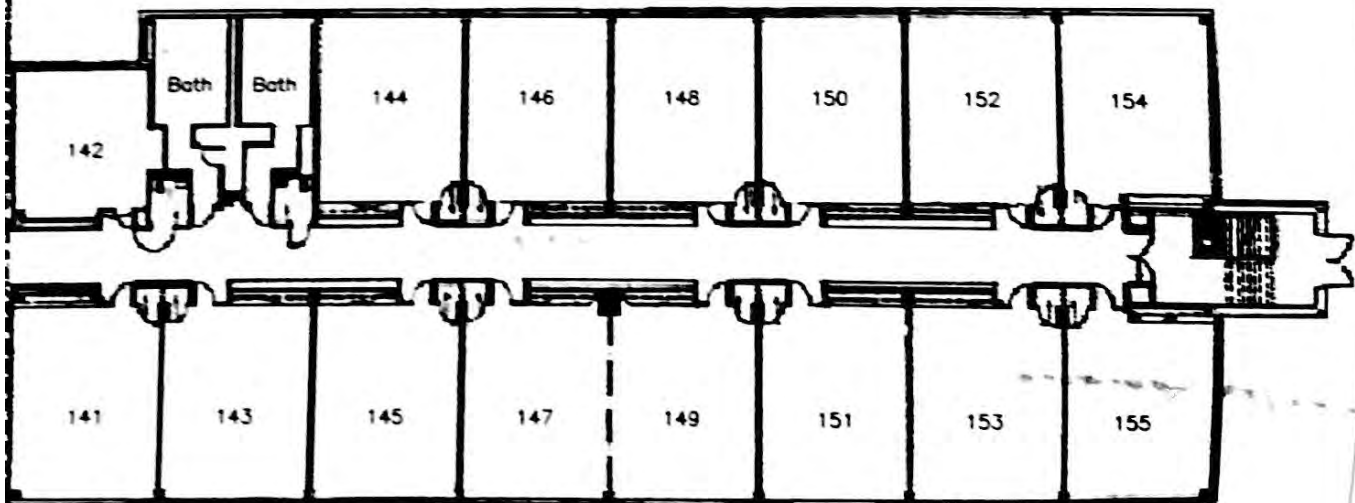




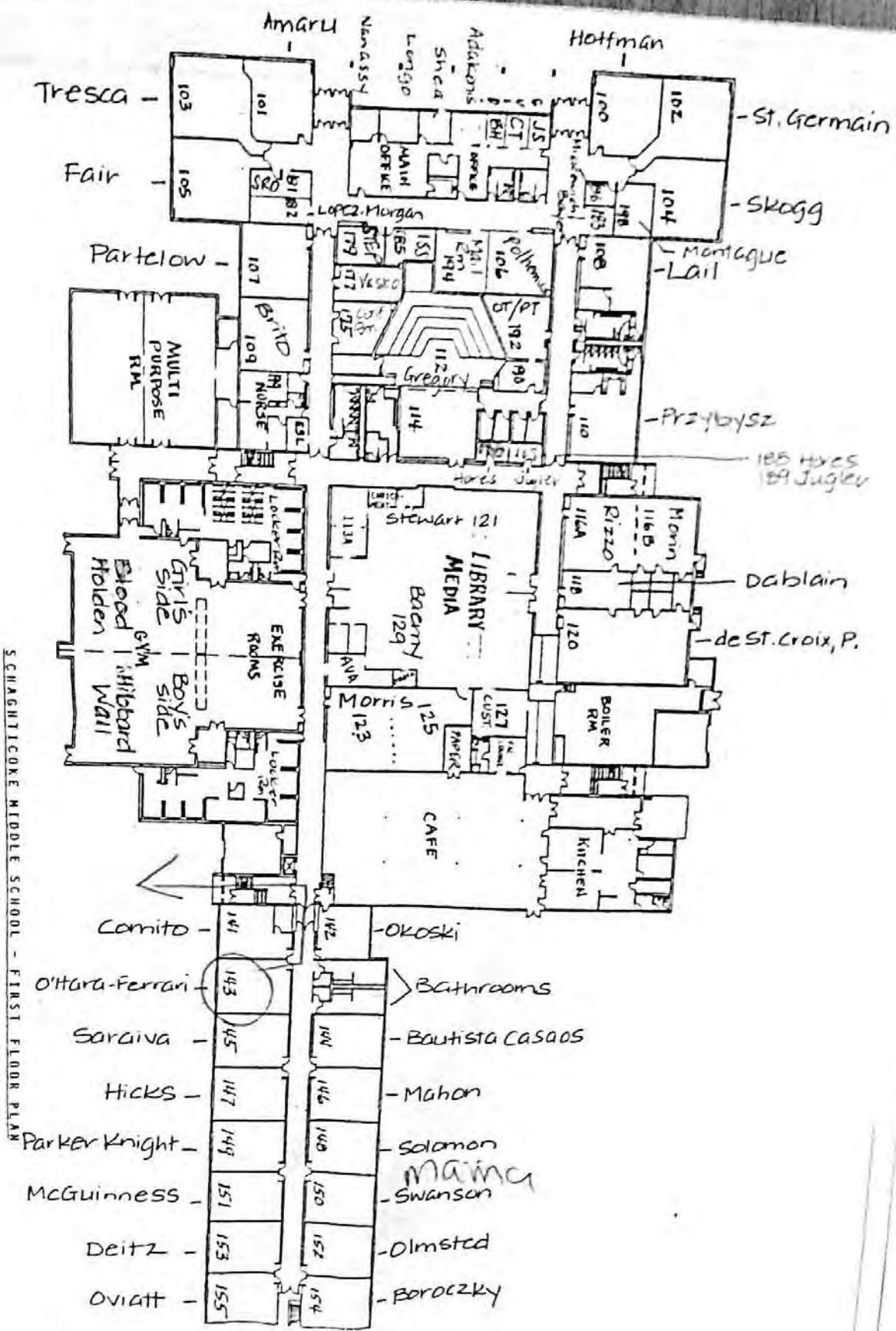
# SMS

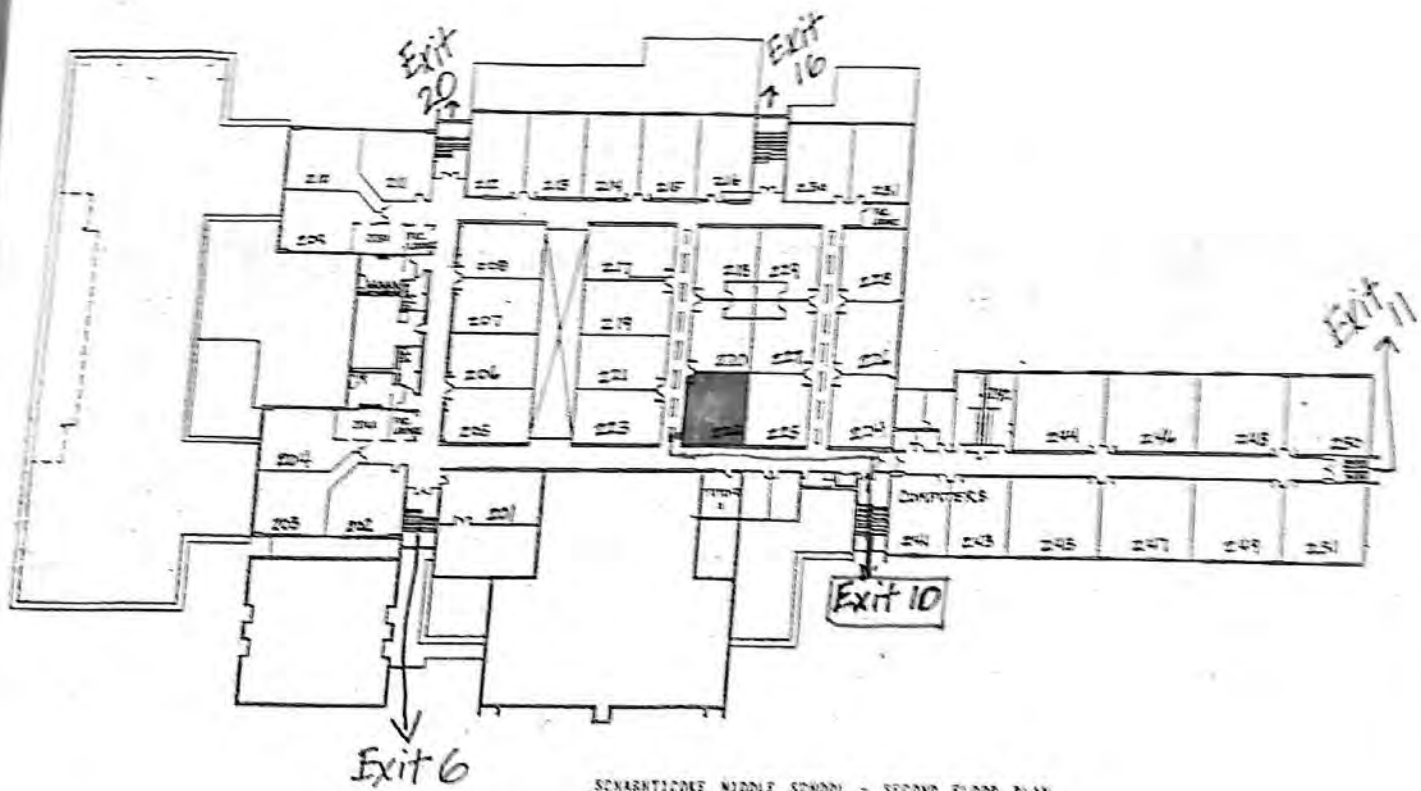


# SMS 1st Floor



7.98c





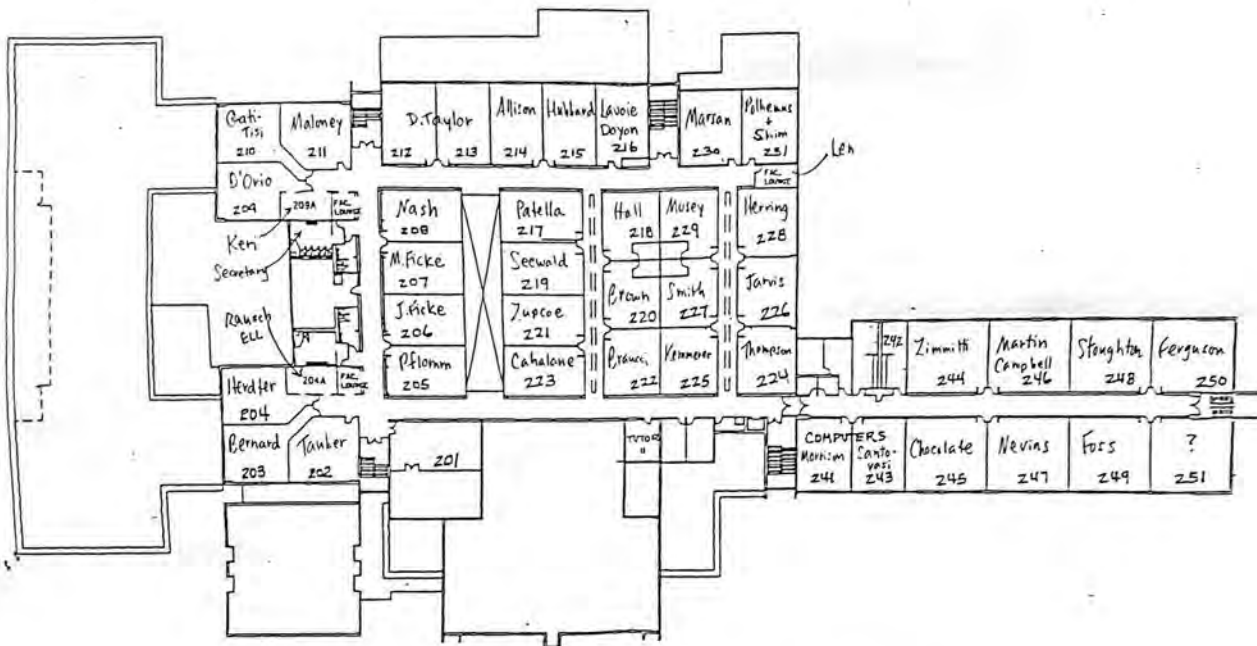
SCHARHOKER MIDDLE SCHOOL - SECOND FLOOR PLAN  
EVACUATION MAP

18 19

220;

RIGHT  
RIGHT  
LEFT DOWN  
ACROSS PARKING  
AREA





SCHAGHTICOKE MIDDLE SCHOOL - SECOND FLOOR PLAN

EVACUATION MAP