



# Gateway Community Action Partnership

August 2020

## In This Issue

Gateway Food Distribution

2020 Census

Next Generation Leaders

Use AmazonSmile To Support Gateway

Around Gateway Community Action Partnership ... News and Notes

[Join Our Mailing List!](#)

## Agency Mission and CAP Promise

The agency's mission is to provide services that improve the quality of life and promote self-sufficiency.

**CAP Promise:** Community Action changes people's lives, embodies the spirit of hope, improves communities, and makes America a better place to live. We care about the entire community, and we are dedicated to helping people help themselves and each other.

## Contact Information

Rivers Edge Campus  
(Headquarters)  
110 Cohansey Street

Dear Gene,

The name Gateway Community Action Partnership reflects our expanded coverage area, but more importantly, it signifies what we are all about. We are a gateway to success for individuals and families in our community and we achieve those results through actions done in partnership within that very community we serve. So please take a minute to read our newsletter and learn more about our successes and struggles as we serve a Gateway to Community Action in Partnership with others for everyone's benefit!

## Gateway On The Front Lines Of Fighting Food Insecurity During COVID-19 Pandemic

A couple pulled up to Gateway's Bridgeton offices, feeling somewhat uncomfortable, and not sure what to expect. After holding steady jobs in the restaurant business, and able to provide for their family, they were seeking assistance for the first time in their lives. They were like too many others, robbed of their livelihoods by COVID-19.

Marcus Weaver, Gateway's Director of Agriculture and Food Initiatives, sensed their uneasiness and asked how he could help.

"I never in my life thought I would need to go to a food pantry to get food for my family," the wife said.

That is what this pandemic has done. People who felt safe and secure in their jobs in February, never thinking they would need this type of assistance, were among the

Bridgeton, NJ  
08302

(856) 451-6330

growing number of unemployed only a month or so later, wondering how to pay their bills and put food on the table. The husband and wife had car payments and children in college and were having a hard time making ends meet. Gateway helped by supplying food for the family.

Gateway has long been a distributor of food to families in need. But the distribution has accelerated during this pandemic. Gateway's Bridgeton Emergency Food Pantry distributed 30,000 pounds of food a month before COVID-19. When the pandemic hit, it was 50,000 pounds in April, 45,000 in May, 84,000 in June and 121,000 pounds in July. In Atlantic City, through the Gateway Head Start Early Education Center, approximately 100,000 pounds of food were distributed.

"Gateway is on the front line of helping people during this pandemic, and it is truly heartbreaking to see what COVID-19 has done to families," said Albert B. Kelly, Gateway's President and CEO. "Fortunately, Gateway is in a position to ease some of their burden through our food distribution and other services we provide. I am grateful to our funders who have provided resources to Gateway to provide food to help those who have been affected by this terrible disease. I am also proud of the staff at Gateway, who have worked very hard in challenging circumstances in providing food and services to those who need it most."

Foundations, businesses and others quickly reacted to these uncertain times by providing funds to feed our low-income, poverty-stricken neighbors who were already having a difficult time before this pandemic hit us. Others provided funds to help in other ways.

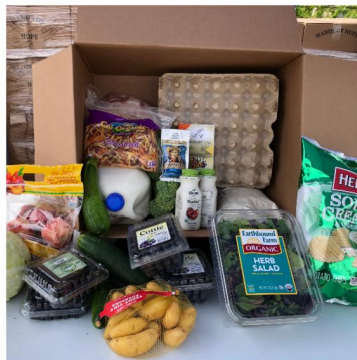
Wells Fargo Regional Foundation, Ocean Inc., the Community Foundation of New Jersey, the Community Foundation of South Jersey, New Jersey Childhood Nutrition Fund, the M25 Initiative, United Way of Delaware, the Pappas Foundation, The Wawa Foundation, the AT&T Foundation, Horizon Foundation, CRDA, Atlantic City Electric, BF Mazzeo Fruit and Produce, Cumberland Dairy, Danone North America, Community Food Bank, Blessings of Hope, Common Market, TMK Produce, Novick Brothers,, Seashore Produce and Salem County Vo-Tech are some of those who stepped into this crisis to provide the funds, facilitate distribution, and offer help for so many in need.

At one Atlantic City distribution in July, Ed Bethea, Gateway's Executive VP and COO, and Michael Cupeles, Gateway's Male Initiative Coordinator, teamed with Omega Psi Phi, Mu Beta Phi and Prince Hall Lodge # 27 to distribute food. Gateway Head Start Early Education Center staff Latoya Dunston, Carla Thomas, Shynese Adams, and Thomani Theoharis volunteered their time on their day off to help.

Typical of what is happening today is the story of a single father who is caring for a 7-year-old autistic daughter. He was running out of food while awaiting unemployment relief. Weaver said the father was teary-

eyed with gratitude when Gateway dropped off his grocery parcels.

"I feel very blessed to be in a position where I can help to meet needs instead of needing to receive assistance," Weaver said. "Food access is so foundational to a productive life. No one should need to go hungry, and we are trying our best to make that possibility a reality in our communities."



2020 Is The Year Of The Census! Please Participate!

Together, we can ensure  
that our community receives the  
resources it needs.

United States®  
**Census  
2020**

Learn more at [2020census.gov](https://2020census.gov).

The United States Census 2020 affects every one of us, from the distribution of \$675 billion in federal funds to plans for future government services. We need you to complete the Census 2020 questionnaire. There is still time to do it. There are three ways to do it: online, by phone and by mail. We are all in this together. Help us get a Complete Count.



**Message from Albert B. Kelly, President  
and CEO of Gateway Community  
Action Partnership.**

**More Information On How To Participate In The 2020 Census**





**You can complete your 2020 Census through various different methods!**

- 1.) Go online via computer or your phones web browser:  
@ [2020CENSUS.GOV](https://2020census.gov)



Or for Spanish [2020CENSUS.GOV/ES](https://2020census.gov/es)

You can find the online translation for even more language's on  
[2020census.gov/en/languages](https://2020census.gov/en/languages)

- 2.) **Connect directly to a live Census service representative by calling toll free at:**

- English: 844-330-2020
- Spanish: 844-468-2020
- Chinese (Mandarin): 844-391-2020
- Arabic: 844-416-2020
- Portuguese: 844-474-2020
- Japanese: 844-460-2020



You can find even more languages at:

[2020census.gov/en/ways-to-respond/responding-by-phone](https://2020census.gov/en/ways-to-respond/responding-by-phone)

- 3.) **Responding through the mail is an available option for those households who haven't responded yet.**

**Just wait for a paper form questionnaire to arrive in your mailbox. Complete and return using the enclosed envelope!**



## Gateway's Next Gen Leaders Made Positive Impact In the Community This Summer

Gateway Community Action Partnership's Next Gen Leaders - our youth leadership program - has worked directly with the community to offer relief during the COVID-19 pandemic. The Next GEN Leaders have spent their summer packaging and distributing grab-

and-go lunches to the senior and homeless population in the community, canvassing the neighborhood for families facing food insecurity, and assisting with 2020 Census outreach.

With the funding from the Robert Wood Johnson Foundation, Gateway's food distribution program and the Next GEN leaders made a difference in the lives of countless individuals and families in the community.

Our Next GEN Leaders gathered statements from a few of the families we serve with the grab-and-go meal distribution. They asked the families how they were impacted by the program, and how we can serve them better in the future. The responses provided were uplifting and encouraging, as they demonstrated a positive change in the community.

*"You are very generous in thinking about people like us in need. It's great to see young people thinking and acting like adults and treating everyone with love."*

*"The kids love the food you bring them and it helps us not worry about lunch as often."*

*"You guys came just in time because we were just running out of food. In my opinion, this program has been perfect for me and my family. Keep doing what you're doing."*

*"It [helps feed the kids] and gets me to focus more money onto back to school things. Keep doing what you're doing, you've been a great help."*

*"This program has fed my large family countless times and it has been a blessing. You guys came with food and beverages to fill our table and it has been great to worry less about providing food. You guys are fantastic. I can't think of one flaw currently in mind. Thank you for serving free food to our family, Next GEN Leaders."*

We also asked our Next GEN Leaders to tell us how the program has impacted them and made a difference in their lives and in the lives of those they serve day to day.

**Alazea Rivera:**

"What inspired me to join the Next GEN program was wanting to help make a change and positive impact in my community

In my experience, the grab-and-go meal program impacted clients and families in the community by making them feel as though there are people who care, and it takes the stress and worry of whether they're going to have enough food for the week off of their shoulders. It has impacted me because it makes me happy knowing people in the community got food without worrying about how to get the food."

**Gary Gould:**

"I felt a strong need to help out the community because I've grown up here all of my life. So I asked myself, 'if there's an opportunity to make it better, why not take it?'

In my experience, the grab-and-go meal program has impacted clients and families in the community by freeing them from their food insecurity and giving them a way out of some of their daily struggles. Seeing this has impacted me because it has shown me that we, as a community, go through similar issues and that with the right people and right mindset, we can overcome them."

**Marcos Rivera:**

"My inspiration for joining the Next GEN Leaders program was learning the potential of how the program would help our community. This curiosity and natural passion for helping others made me want to join in!

Next GEN program helped me with my decision making about my goals by helping me communicate properly and not be afraid to take risks. Moving forward, I will take these newly

founded traits into my potential career, a forever lasting part of who I've become and who I will be."







## Support Gateway CAP By Shopping At AmazonSmile

You can support Gateway's mission "to provide services that improve the quality of life and promote self-sufficiency" while shopping at Amazon's "AmazonSmile" during this holiday season or any time of year. Please click on the link below the next time you shop. More information about the program follows the link. Thank you.

**[Click Here To Donate To Gateway Through AmazonSmile!](#)**

## About AmazonSmile

### What is AmazonSmile?

AmazonSmile is a simple and automatic way for you to support Gateway Community Action Partnership every time you shop, at no cost to you. When you shop at [smile.amazon.com](https://smile.amazon.com), you'll find the exact same low prices, vast selection and convenient



shopping experience as Amazon.com, with the added bonus that Amazon will donate a portion of the purchase price to Gateway.

**How do I shop at AmazonSmile?**

To shop at AmazonSmile simply click on the link above or go to smile.amazon.com from the web browser on your computer or mobile device. You may also want to add a bookmark to smile.amazon.com to make it even easier to return and start your shopping at AmazonSmile.

**Which products on AmazonSmile are eligible for charitable donations?**

Tens of millions of products on AmazonSmile are eligible for donations. You will see eligible products marked "Eligible for AmazonSmile donation" on their product detail pages. Recurring Subscribe-and-Save purchases and subscription renewals are not currently eligible.

**Can I use my existing Amazon.com account on AmazonSmile?**

Yes, you use the same account on Amazon.com and AmazonSmile. Your shopping cart, Wish List, wedding or baby registry, and other account settings are also the same.

## Around Gateway Community Action Partnership ... News And Notes

**Internet Essentials**, a program offered by **Comcast**, gives income-eligible families **access to the Internet for \$9.95 a month** with no activation fee, equipment fees or price increases. Having the Internet enables children to do homework, type reports or do research and enables the parents to e-mail teachers as well as look for jobs, pay bills or find doctors. Gateway Community Action Partnership is working with Comcast to inform families of the program. To be eligible, low-income applicants need to show they are participating in one or more of a dozen different federal assistance programs, including Medicaid, SNAP, and SSI. They must reside in a Comcast service area and must not have subscribed to Comcast Internet in the last 90 days or have overdue Comcast bills. Also, low-cost computers are being offered for \$149.99 and free training is accessible if needed. To get more information or to sign up, visit [www.internetessentials.com](http://www.internetessentials.com) or call 1-855-846-8376. ... Gateway operates the **Special Supplemental Nutrition Program for Women, Infants & Children (WIC)** in Camden, Cape May, Cumberland, Atlantic and Salem counties. The program provides supplemental foods, nutrition education, lactation support, immunization education and health care referrals to income-eligible pregnant women, new mothers, infants and children up to age 5. Gateway WIC serves more than 23,000 clients annually through flexible hours. WIC is an equal opportunity program. If you believe you have been discriminated against because of race, color, national origin, age, sex or handicap, write immediately to: USDA, Director-Office of Civil Rights, Room 326-W, Whitten Building, 1400 Independence Avenue SW, Washington, DC, 20250 - 9410. For additional information on the Gateway WIC program or nearest office location and hours of operation, call the Gateway WIC program at 856-451-5600 or 856-225-5050. ... Gateway's **Head Start** program is once again sponsoring the **Child Care Food Program**. This program is designed to provide meals to children receiving services in Head Start centers located throughout Atlantic, Cape May, Mercer, Cumberland, Gloucester and Salem counties. Meals are available at no separate charge to all children 12 and under enrolled in the Child Care Food Program and are served without regard to race, color, national origin, disability, age or sex.



[Gateway Community Action Partnership Website](http://GatewayCommunityActionPartnership.org)

Sincerely,

Michael Cudemo  
Gateway Community Action Partnership

Gateway Community Action Partnership, 110 Cohansey Street, Bridgeton, NJ 08302

[Forward email](#) | [Update Profile](#) | [About our service provider](#)

Sent by [mcudemo@gatewaycap.org](mailto:mcudemo@gatewaycap.org) powered by

