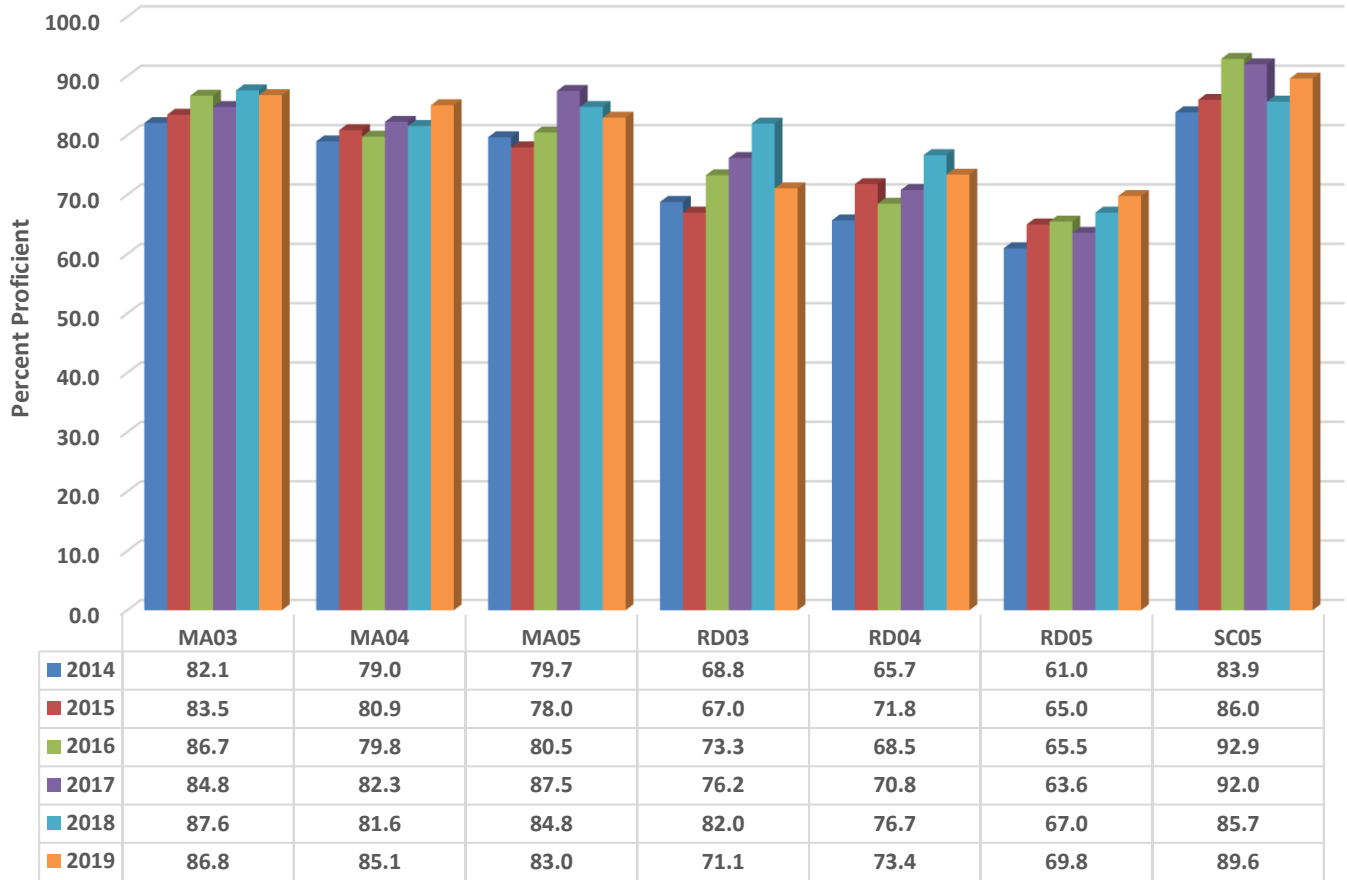


## Hopewell Elementary Six Year Comparison Using GLP



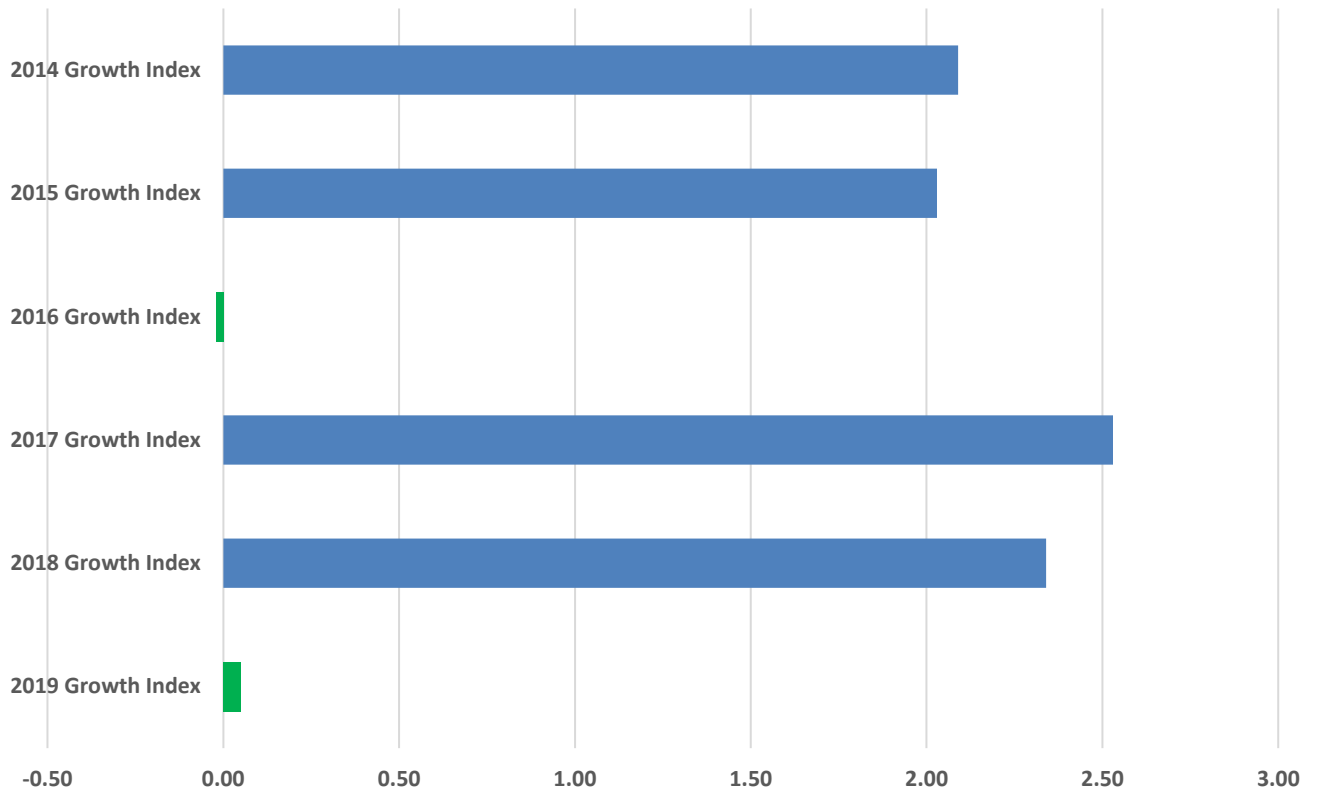
### READY Accountability Model

	CCR Denominator	CCR Percent	GLP Denominator	GLP Percent
2014	788	66.4	788	74.4
2015	702	67.0	702	76.1
2016	757	70.8	757	78.5
2017	700	68.6	700	79.4
2018	720	72.8	720	80.6
2019	748	69.8	748	79.8

### Growth and Participation Targets

	Growth Status	Total Targets	Targets Met	Target Percent
2014	Exceeded Expected Growth	23	22	95.7
2015	Exceeded Expected Growth	25	24	96.0
2016	Met Expected Growth	13	13	100.0
2017	Exceeded Expected Growth	15	15	100.0
2018	Exceeded Expected Growth	13	13	100.0
2019	Met Expected Growth	11	11	100.0

## Hopewell Elementary Six Year Growth Index



	2019 Growth Index	2018 Growth Index	2017 Growth Index	2016 Growth Index	2015 Growth Index	2014 Growth Index
■ Hopewell	0.05	2.34	2.53	-0.02	2.03	2.09

### Growth Index

	School Accountability Type	Index	Level
<b>2014</b>	Math, Reading, and Science	2.09	Exceeded Expected Growth
<b>2015</b>	Math, Reading, and Science	2.03	Exceeded Expected Growth
<b>2016</b>	Math, Reading, and Science	-0.02	Met Expected Growth
<b>2017</b>	Math, Reading, and Science	2.53	Exceeded Expected Growth
<b>2018</b>	Math, Reading, and Science	2.34	Exceeded Expected Growth
<b>2019</b>	Math, Reading, and Science	0.05	Met Expected Growth