

C:\Users\jpowells\Documents\PAGE HS BLEACHERS Main Gym\_CENTRAL\_jpowells.rvt

2/1/2021 1:05:15 PM

PAGE UNIFIED SCHOOL DISTRICT

# PAGE HS - MAIN GYM

## BLEACHER AND WALL PAD REVISION

SFB - 030208209-1007-016-BRG

434 SOUTH LAKE POWELL BOULEVARD, PAGE, AZ 86040



### ABBREVIATIONS

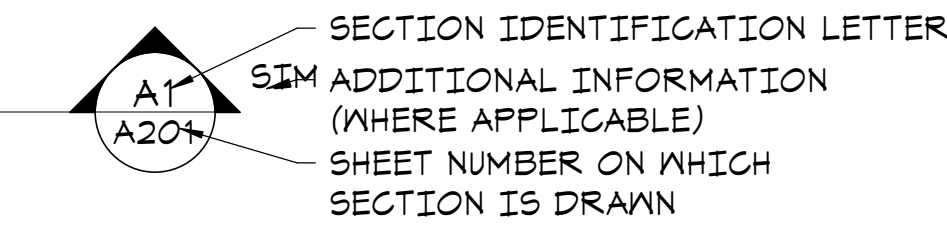
(ARCHITECTURAL DRAWINGS ONLY)

AB.	ANCHOR BOLT	I.B.G.	INTERNATIONAL BUILDING CODE
ABC	AGGREGATE BASE COURSE	I.E.	INVERT ELEVATION
A/C	AIR CONDITIONING	INSUL.	INSULATION
A.F.F.	ABOVE FINISH FLOOR	LAM.	LAMINATE
ALT.	ALTERNATE	LAV.	LAVATORY
A.C.P.	ACOUSTICAL CEILING PANEL	MAS.	MASONRY
BD.	BOARD	MAT.	MATERIAL
BFP	BACK FLOW PREVENTER	MAX	MAXIMUM
BLDG	BUILDING	MIN.	MINIMUM, MINUTE
BLKG	BLOCKING	MTL.	METAL
BM	BEAM	MTD.	MOUNTED
B.O.S.	BOTTOM OF STEEL	N.I.C.	NOT IN CONTRACT
BTM	BOTTOM	N.T.S.	NOT TO SCALE
CAB	CABINET	NO.	NUMBER
C.L.	CENTERLINE	NOM.	NOMINAL
C.C.	CENTER TO CENTER	O.C.	ON CENTER
C.I.P.	CAST-IN-PLACE	OPP.	OPPOSITE
C.J.	CONTROL JOINT	PCP	PORTLAND CEMENT PLASTER
CLG	CEILING	PL.	PLATE
C.M.U.	CONCRETE MASONRY UNIT	PTD.	PAINTED
C.O.	CLEAN OUT	QT	QUARRY TILE
CONC.	CONCRETE	REINF.	REINFORCING
CONST.	CONSTRUCTION	RM.	ROOM
CONT.	CONTINUOUS	S.C.	SOLID CORE
CORR.	CORRIDOR	SCHED.	SCHEDULE
CT	CERAMIC TILE	SECT.	SECTION
DET.	DETAIL	S.F.	SQUARE FOOT (FEET)
DIA.	DIAMETER	SIM.	SIMILAR
DIM	DIMENSION	SPECS.	SPECIFICATIONS
EA.	EACH	STL.	STEEL
E.J.	EXPANSION JOINT	SUSP.	SUSPENDED
ELEV.	ELEVATION	T.O.	TOP OF
ELECT.	ELECTRIC	T.O.F.	TOP OF FRAMING
EQ.	EQUAL	T.O.M.	TOP OF MASONRY
E.M.C.	ELECTRIC WATER COOLER	T.O.S.	TOP OF STEEL
EXIST.	EXISTING	TLT	TOILET
EXP. BT.	EXPANSION BOLT	T.S.	TUBE STEEL
EXP. STR.	EXPOSED STRUCTURE	TYP.	TYPICAL
EXT.	EXTERIOR	U.B.C.	UNIFORM BUILDING CODE
F.D.	FLOOR DRAIN	UN.O.	UNLESS NOTED OTHERWISE
F.E.	FIRE EXTINGUISHER	VERT.	VERTICAL
F.E.G.	FIRE EXTINGUISHER CABINET	VEST	VESTIBULE
F.F.L.	FINISH FLOOR LINE	VAC	VINYL WALL COVERING
F.F.	FINISH FLOOR	WD.	WOOD
FIN.	FINISH	W.H.	WATER HEATER
FLR.	FLOOR	W/O	WITH OUT
FT.	FOOT, FEET	W/O	WITH OUT
FTG.	FOOTING	WT.	WEIGHT
GB.	GUAGE	WAF	WELDED WIRE FABRIC
G.I.	GALVANIZED IRON	WAFR.	WELDED WIRE FABRIC TRANSFORMER
GALV.	GALVANIZED		
GL.	GLASS		
GYP. BD.	GYPSEUM BOARD		
H.M.	HOLLOW METAL		
H.C.	HANDICAP		
H-CONC.	HARDENED CONCRETE		
H.B.	HOSE BIBB		
H/H	HAND HOLE		
HORIZ.	HORIZONTAL		
HT.	HEIGHT		

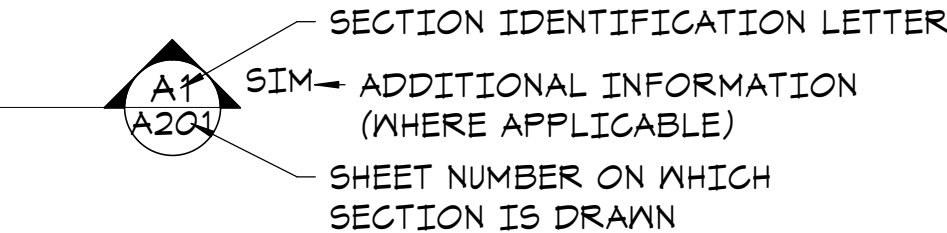
### SYMBOLS

(ARCHITECTURAL DRAWINGS ONLY)

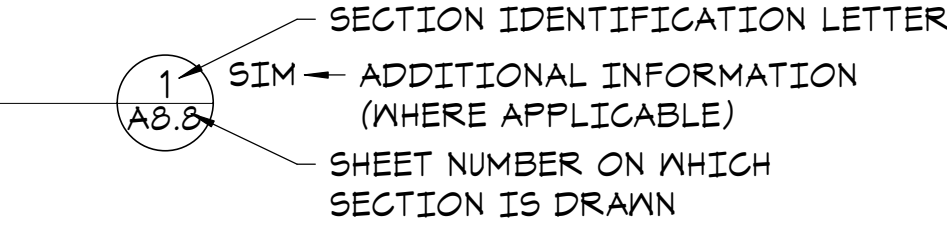
#### BUILDING SECTION MARKER



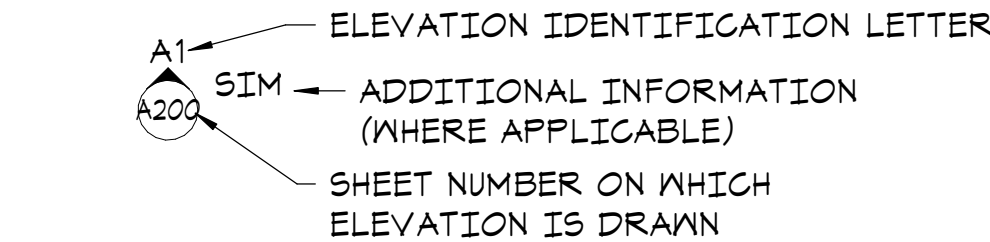
#### WALL SECTION MARKER



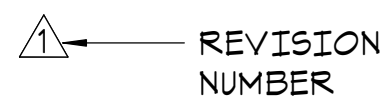
#### DETAIL MARKER



#### ELEVATION MARKER



#### REVISION MARKER



#### FINISH MARKER



### MATERIALS LIST

(ARCHITECTURAL DRAWINGS ONLY)

	ASPHALTIC CONCRETE PAVING
	BASE COURSE
	CONCRETE
	EARTH
	CONCRETE MASONRY UNIT
	STEEL
	BATT OR ACOUSTICAL INSULATION
	RIGID INSULATION
	FINISH WOOD
	GYPSEUM, PLASTER, OR STUCCO
	PLYWOOD
	RESILIENT FLOORING

### GENERAL NOTES

1. THE CONTRACTOR SHALL VISIT THE PREMISES TO REVIEW & UNDERSTAND EXISTING CONDITIONS UNDER WHICH HE WILL BE OBLIGED TO PERFORM THE WORK. THE CONTRACTOR SHALL HARMONIZE HIS WORK SO EACH PIECE OF EQUIPMENT WILL BE INSTALLED TO FUNCTION PROPERLY.
2. THE CONTRACTOR SHALL PERFORM ALL BLEACHER WORK AS SHOWN ON THE DRAWINGS AND DESCRIBED IN THE SPECIFICATIONS INCLUDING MINOR ITEMS OF MATERIAL OR EQUIPMENT NECESSARY TO MEET THE REQUIREMENTS AND INTENT OF THE PROJECT.
3. CONTRACTOR SHALL EXAMINE ALL DRAWINGS AND SPECIFICATIONS AND SHALL DETERMINE THE SEQUENCE OF CONSTRUCTION THROUGHOUT THE PROJECT, INCLUDING, BUT NOT LIMITED TO: EXISTING, TEMPORARY, REMODELED AND NEW AREAS.
4. THE CONTRACTOR SHALL BE HELD FULLY RESPONSIBLE FOR THE PROPER RESTORATION OF ALL EXISTING SURFACES REQUIRING PATCHING, PLASTERING, PAINTING, AND/OR OTHER REPAIR DUE TO THE CONSTRUCTION HERE IN.
5. AT THE END OF THE DAY, CONTRACTOR SHALL PROVIDE SUITABLE BARRICADES AND CONSTRUCTION TAPE AROUND ALL WORK AREAS MAINTAINING A SAFE ENVIRONMENT BY MEANS OF EGRESS AND ACCESSIBILITY.
6. AT NO TIME SHALL THE CONTRACTOR, HIS SUB-CONTRACTOR, OR ANY PERSON IN HIS EMPLOY HAVE CONTACT WITH ANY SCHOOL STAFF, FACULTY OR STUDENTS UNLESS ABSOLUTELY NECESSARY FOR THE PROGRESS OF THE WORK.
7. CONTRACTOR SHALL HAVE SOLE RESPONSIBILITY FOR ACCURACY OF ALL MEASUREMENTS, ESTIMATES OF MATERIALS QUANTITIES AND SIZES, AND SITE CONDITIONS AFFECTING THE WORK.

### OWNER / TENANT

**OWNER**  
**PAGE UNIFIED SCHOOL DISTRICT**  
500 S NAVAJO DR,  
PAGE, AZ 86040  
PHONE: (928) 608-4100

**TENANT**  
**PAGE HIGH SCHOOL**  
434 S LAKE POWELL BLVD,  
PAGE, AZ 86040  
PHONE: (928) 608-4138

### SHEET LIST

GENERAL  
6001 GENERAL INFORMATION & SHEET INDEX

ARCHITECTURAL  
A100 BLEACHER SEATING PLAN  
A700 SPECIFICATIONS  
A701 SPECIFICATIONS CONTINUED  
A702 SPECIFICATIONS CONTINUED

### PROJECT INFORMATION

**GRANT FUND**  
**AZ SCHOOL FACILITIES BOARD**  
1700 N. WASHINGTON STE 104  
PHOENIX, AZ 85007  
PHONE: 602-542-6567  
CONTACT: MARY MORRISON



SFB PROJECT: 030208209-1007-016-BRG  
PAGE HS GYM BLEACHERS

### BUILDING DATA

BLDG	DESC.	YEAR	AREA
1007	HS PHYSICAL EDUCATION	1990	47,500 SF

#	REVISIONS / SUBMISSIONS	DATE

PAGE UNIFIED SCHOOL DISTRICT  
**PAGE HS - MAIN GYM**  
BLEACHER AND WALL PAD REVISION

434 SOUTH LAKE POWELL BOULEVARD, PAGE, AZ 86040

**Emc2**  
Architects ■ Planners, PC  
Emc2 GROUP ARCHITECTS/PLANNERS, PC  
1635 N. Greenfield Road, Suite 144  
Mesa, Arizona 85205  
P 480 830 3838  
F 480 830 3860  
www.emc2architects.com

DRAWING TITLE:  
**GENERAL INFORMATION & SHEET INDEX**

	DESIGNED BY: Emc2	PROJECT NO. 13820744.00
	DRAWN BY: Emc2	SCALE: As indicated
	CHECKED BY: Emc2	DRAWING NO.
	DATE: February 1, 2021 DATA FILE:	<b>G001</b>

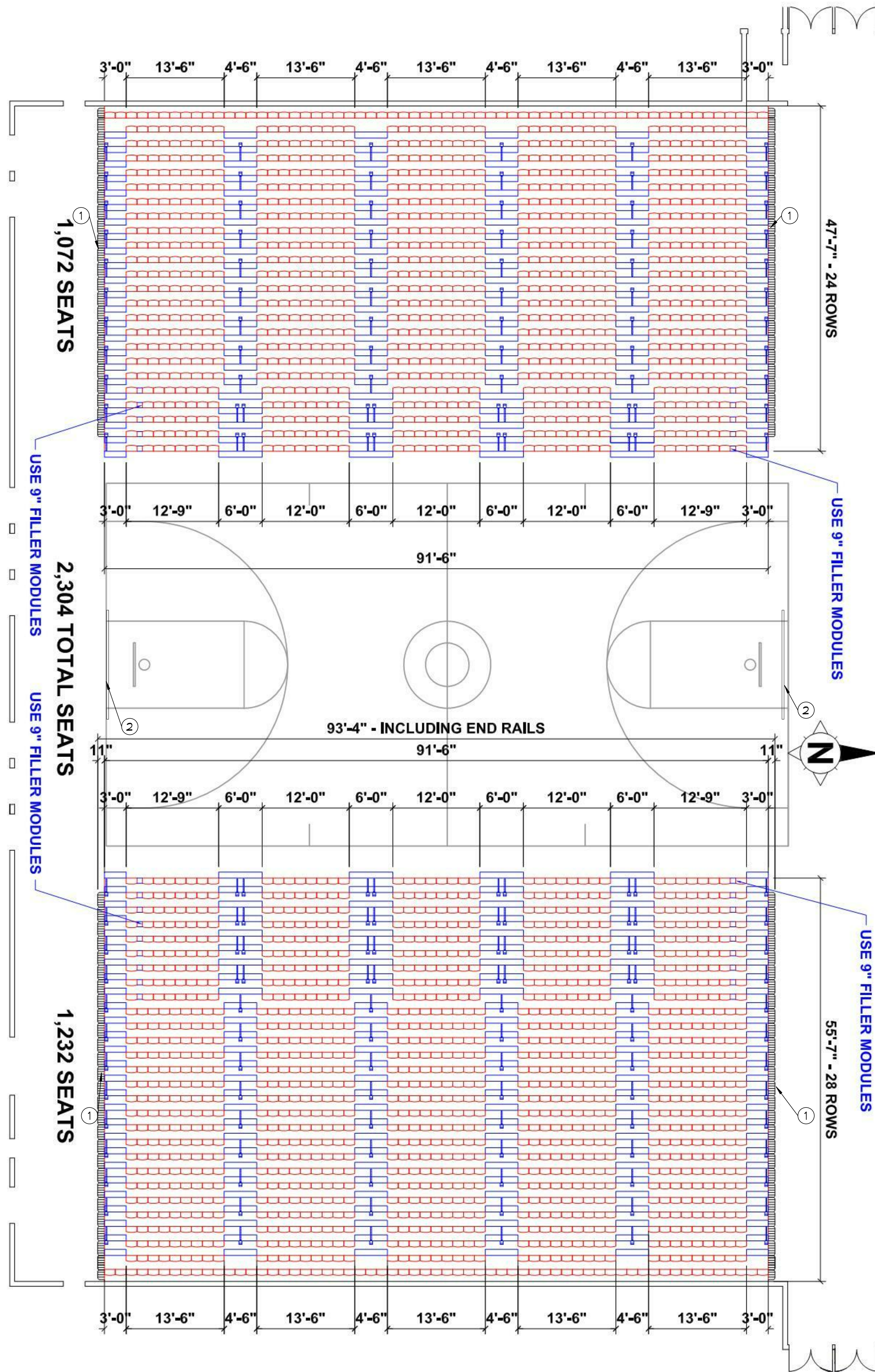
10 YEAR UNDER CARRIAGE  
WARRANTY





G1	PHOTO - GYM LOOKING SOUTH
----	---------------------------

A1	PHOTO - EXIST. BLEACHERS CONT.
----	--------------------------------



## SEATING PLAN - NON SMOKE PROTECTED BUILDING

NOT TO SCALE

## GENERAL NOTES

- A. UNDER THIS CONTRACT, CONTRACTOR TO DISMANTLE & FULLY REMOVE THE EXISTING BLEACHERS & ELECTRICAL MOTORS FROM THE SITE. SEE PHOTOGRAPHS THIS SHEET.
- B. UNDER THIS CONTRACT, CONTRACTOR TO PROVIDE & INSTALL NEW BLEACHERS AS SPECIFIED & CONFORMING TO THE SCHEMATIC DIAGRAMS PROVIDED. ALL BLEACHERS TO BE MOTORIZED. PROVIDE ALL MOTORS, CONDUITS, CONDUCTORS, CABLING & EQUIPMENT REQUIRED FOR MOTORIZED OPERATION. VERIFY & COORDINATE ELECTRICAL REQUIREMENTS WITH THE EXISTING FACILITY POWER SUPPLY.
- C. UNDER THIS CONTRACT, CONTRACTOR TO PROVIDE & INSTALL NEW SPORTS WALL PADDING AS SPECIFIED.

#	REVISIONS / SUBMISSIONS	DATE
---	-------------------------	------

PAGE UNIFIED SCHOOL DISTRICT

**PAGE HS - MAIN GYM**  
BLEACHER AND WALL PAD REVISION

434 SOUTH LAKE POWELL BOULEVARD, PAGE, AZ 86040

**Emc2**  
Architects ■ Planners, PC

Emc2 GROUP ARCHITECTS/PLANNERS, P  
1635 N. Greenfield Road, Suite 144  
Mesa, Arizona 85205  
P 480 830 3838  
F 480 830 3860  
[www.emc2architects.com](http://www.emc2architects.com)

**DRAWING TITLE:**

## BLEACHER SEATING PLAN



DESIGNED BY:	Designer
DRAWN BY:	Author
CHECKED BY:	Checker
DATE:	February 1, 2021
DATA FILE:	

PROJECT NO  
13820744.00

SCALE:
12" = 1'-0"
DRAWING NO.

# A100





C:\Users\jlowers\Documents\PAGE HS BLEACHERS Main Gym\_CENTRAL\_jlowers.rvt 2/1/2021 12:40:57 PM

Emc2 Group Architects Planners, PC						Emc2 Group Architects Planners, PC						Emc2 Group Architects Planners, PC											
SECTION 12 66 13																							
TELESCOPING BLEACHERS																							
PART 1 GENERAL																							
1.01 SECTION INCLUDES																							
A. Telescoping bleachers.																							
B. Electric motor operators, controls, and internal wiring.																							
1.02 RELATED REQUIREMENTS																							
A. Section 26 27 17 - Equipment Wiring: Connection of electric motors and controls.																							
1.03 REFERENCE STANDARDS																							
A. NFPA 102 - Standard for Grandstands, Folding and Telescopic Seating, Tents, and Membrane Structures; National Fire Protection Association.																							
B. PS 1 - Structural Plywood; 2007.																							
1.04 SYSTEM DESCRIPTION																							
A. System Operation:																							
1. The bleacher system shall be comprised of multiple tiered, closed deck seating rows operating in a telescopic manner, incorporating the most economical quantity of sections while still complying with all loading requirements.																							
2. The first moving row shall be secured with friction or mechanical locks. Other rows shall be mechanically locked, operable only upon unlocking and cycling the first row, quantity to be determined by Interkal engineering.																							
3. Each bleacher row shall be comprised of risers, seat and deck components, and a complete set of supportive columns and braces.																							
4. The telescopic bleacher shall incorporate a locking system permitting the use of one, several, or all rows, each locked in the extended position.																							
B. Design Requirements:																							
1. Telescopic bleacher design and fabrication shall conform to current code accepted by the authority having jurisdiction.																							
2. Telescopic gymnasium seating will be designed to support a vertical live load of 100 PSF, but not less than 120 PLF on both seat boards and footboards. Seating shall also be designed to carry a horizontal sway force of 24 PLF parallel to the seating and 10 PLF perpendicular to the seating.																							
3. Steel components shall be cold-formed from appropriate width strip stock conforming to ASTM A570 - Grade C 30KSI, ASTM A653- Grade 33 and 50, ASTM A500 - Grade B 46 KSI as applicable.																							
4. Lumber components are kiln dried, finger jointed, edge glued southern pine of grade "B & B Finish" manufactured to the current SPIB glued-laminated standards for southern pine.																							
5. Plywood deck boards shall be fabricated from Douglas Fir Premium Underlayment with exterior glue, 5 ply minimum, solid crossband directly under face ply, species Group 1 and manufactured in accordance with PS-1-95.																							
1.05 SUBMITTALS																							
A. See Section 01 3000 - Administrative Requirements, for submittal procedures.																							
B. Product Data: Manufacturer's data sheets on each product to be used, including:																							
1. Preparation instructions and recommendations.																							
2. Storage handling and requirements.																							
3. Installation methods.																							
Page High School Bleachers Emc2 #1382744.00						Telescoping Bleachers 12 66 13 - 1						Page High School Bleachers Emc2 #1382744.00						Telescoping Bleachers 12 66 13 - 2					
Emc2 Group Architects Planners, PC						Emc2 Group Architects Planners, PC						Emc2 Group Architects Planners, PC											
C. Type: Wall attached.																							
D. Quantity and Overall Dimensions:																							
Provide:																							
1 bank of Wall attached 104'-0" W x 24 Rows high (Main Gym).																							
1 bank of Wall attached 104'-0" W x 28 Rows high (Main Gym).																							
E. ADA																							
1. Truncations: Provide a full section truncation with all necessary front rails, closure panels, and portable step assemblies at aisles as required to meet local jurisdiction compliance with ADA. (one row deep).																							
F. Dimensions:																							
1. Rise: 10-14 inches.																							
2. Row spacing: 24 inches.																							
G. Propulsion																							
1. Friction Power- Furnish Interkal friction power, integral automatic electro-mechanical propulsion system to open and close telescopic seating system. Operation shall assure full visual control of the seating bank. The Wide Track System incorporates two friction drive roller assemblies as an integral part of both first row vertical column assemblies. Each section of bleacher shall have a power system that shall consist of two vertical column roller assemblies which shall include two 6" diameter by 2 1/2" wide cast drive wheels for a minimum of four friction roller contact points per section of bleacher. Each roller shall have a specially formulated 45-durometer rubber covering to grip the floor as the units roll in and out. The two friction drive roller assemblies shall be installed a minimum of 7-feet apart per section. The two friction roller assemblies are linked together by a continuous drive shaft driven by a 1/2 H.P. 208V, 3-phase motor that shall enable the rollers to work simultaneously, resulting in a more efficient operation with allowance for minor variations in the floor surface. All floor friction power systems shall be controlled by a dual directional, removable walk along pendant which plugs into the front of the first row to give the operator proper position for visual control. The pendant control voltage shall be 24 VAC @ less than 50 MA for the safety of all operating personnel. The entire power system shall be U.L. Recognized. A 208/220 volt 3-phase power source, including conduit, wiring, and safety disconnect must be provided by others. The electrical contractor shall perform the connections to the seating equipment at the safety disconnect. Motors, housing, and wiring shall be installed by certified personnel.																							
2.03 MATERIALS																							
A. Lumber: kiln dried, finger jointed, edge glued southern pine of grade "B & B Finish" manufactured to the current SPIB glued-laminated standards for southern pine..																							
B. Plywood: Douglas Fir Premium Underlayment with exterior glue, 5 ply minimum, solid crossband directly under face ply, species Group 1 and manufactured in accordance with PS-1-95.																							
C. Steel Components: cold-formed from appropriate width strip stock conforming to ASTM A570 - Grade C 30KSI, ASTM A653- Grade 33 and 50, ASTM A500 - Grade B 46 KSI as applicable.																							
2.04 FABRICATION																							
A. Continuous Wheel Channel: Wheel channels shall consist of a one piece formed steel channel welded to the base of a vertical column. Wheel channels accommodate 8 to 12 wheels for maximum weight distribution and operating ease. The number of wheels increase as the number of rows increase.																							
B. Wheels: 3-1/2" diameter with 1-1/8" non-marring soft rubber face with rounded edges designed to protect wood or synthetic floor. Provide 1/2" diameter axle for all wheels																							
C. Columns: Electrically welded closed rectangular steel tube, 2" x 3" minimum size, 14-gauge steel fitted with a rear welded gusset at the wheel channel.																							
Page High School Bleachers Emc2 #1382744.00						Telescoping Bleachers 12 66 13 - 4						Page High School Bleachers Emc2 #1382744.00						Telescoping Bleachers 12 66 13 - 5					



C:\Users\jflowers\Documents\FACE HS BLEACHERS Main Gym\_CENTRAL\_jflowers.rvt

	Emc2 Group Architects Planners, PC																																																																																																																																																																																																																																																																																																																																																																																																																																																																																																																																																																																																																																												
	<p><b>PART 3 EXECUTION</b></p> <p>3.01 EXAMINATION</p> <p>A. Verify that field measurements are consistent with those on the shop drawings.</p> <p>B. Verify that electrical rough-ins have been installed and are accessible.</p> <p>C. Do not begin installation until substrates have been properly prepared and area has been cleared of obstructions.</p> <p>D. If substrate preparation is the responsibility of another installer, notify Architect of unsatisfactory preparation before proceeding.</p> <p>E. Coordinate with other work which affects, connects with, or will be concealed by this Work.</p> <p>3.02 PREPARATION</p> <p>A. Clean surfaces thoroughly prior to installation.</p> <p>B. Prepare surfaces using the methods recommended by the manufacturer for achieving the best result for the substrate under the project conditions.</p> <p>3.03 INSTALLATION</p> <p>A. Install in accordance with manufacturer's instructions. Provide accessories, anchors, fasteners, inserts and other items for installation of telescoping bleachers and permanent attachment to adjoining construction.</p> <p>B. Adjust bleachers for smooth and proper operation.</p> <p>C. Clean bleachers and remove all debris from gymnasium resulting from installation.</p> <p>D. Do not field cut or alter seats, fascia, or structural members without approval.</p> <p>E. Provide manufacturer's field representative to inspect completed installation.</p> <p>3.04 ADJUSTING</p> <p>A. After installation completion, test and adjust each telescoping gym seats assembly to operate in compliance with manufacturer's operations manual.</p> <p>3.05 CLEANING</p> <p>A. During the course of the Work and on completion of the Work, remove and dispose of excess materials, equipment and debris away from the premises. Leave Work in clean condition.</p> <p>B. Clean installed telescoping gym seats on both exposed and semi-exposed surfaces. Tough-up finishes to restore damage or soiled surfaces.</p> <p>3.06 CLOSEOUT ACTIVITIES</p> <p>A. Demonstration and Training: Provide manufacturer's field representative to demonstrate to and train Owner's operating personnel in proper operation of equipment.</p> <p>3.07 PROTECTION</p> <p>A. Protect installed products until completion of project.</p> <p>B. Touch-up, repair, or replace damaged products before Substantial Completion.</p> <p><b>END OF SECTION</b></p> <p>Page High School Bleachers Emc2 #1382744.00</p> <p>Telescoping Bleachers 12 66 13 - 7</p>																																																																																																																																																																																																																																																																																																																																																																																																																																																																																																																																																																																																																																												
	Emc2 Group Architects Planners, PC																																																																																																																																																																																																																																																																																																																																																																																																																																																																																																																																																																																																																																												
	<p><b>SECTION 11 66 23</b></p> <p><b>GYMNASIUM EQUIPMENT (WALL PADS)</b></p> <p><b>PART 1 GENERAL</b></p> <p>1.01 SUMMARY</p> <p>A. Section includes the following as shown on Drawings and as specified herein:</p> <p>1. Wall pads.</p> <p>1.02 SUBMITTALS</p> <p>A. Product Data: Submit manufacturer's specifications, design data and installation instructions.</p> <p>B. Shop Drawings: Submit drawings fully describing equipment fabrication, layout and installation. Include details of superstructure, cradles, welding points, hardware, etc. Indicate loading to be imposed in the supporting structure. Show all anchorage, accessory items, and finishes.</p> <p>C. Contract Closeout Submittals: Submit the following in accordance with Section 01 70 00 - Contract Closeout.</p> <p>1. Manufacturer's maintenance and care instructions for equipment.</p> <p>1.03 QUALITY ASSURANCE</p> <p>A. Manufacturer Qualifications: Company specializing in manufacturing products specified in this section, with not less than five years of experience.</p> <p>B. Installer Qualifications: Company specializing in performing work of the type specified and approved by manufacturer.</p> <p>1.04 DELIVERY, STORAGE, AND HANDLING</p> <p>A. Packing and Shipping: Deliver materials to site in manufacturer's original unopened packaging with labels intact. Protect finished surfaces with removable wrapping or coating which will not bond when exposed to sunlight.</p> <p>B. Storage: Adequately protect against damage while stored at the site.</p> <p><b>PART 2 PRODUCTS</b></p> <p>2.01 MANUFACTURERS</p> <p>A. Furnish products of one of the following manufacturer's, except as otherwise approved by the Owner/Architect, subject to compliance with specifications requirements:</p> <p>1. AALCO Manufacturing <a href="http://www.aalcomfg.com">www.aalcomfg.com</a></p> <p>2. Arizona Courtlines, Inc. <a href="http://www.arizonacourtlines.com">www.arizonacourtlines.com</a></p> <p>3. Draper, Inc. <a href="http://www.draperinc.com">www.draperinc.com</a></p> <p>4. Jaypro Sports, LLC <a href="http://www.jaypro.com">www.jaypro.com</a></p> <p>5. Porter Athletic Equipment Co. <a href="http://www.porter-ath.com">www.porter-ath.com</a></p> <p>6. Sportsfield Specialties Inc. <a href="http://www.sportsfieldspecialties.com">www.sportsfieldspecialties.com</a></p> <p>Page High School Bleachers Emc2 #1382744.00</p> <p>Gymnasium Equipment 11 66 23 - 1</p>																																																																																																																																																																																																																																																																																																																																																																																																																																																																																																																																																																																																																																												
	Emc2 Group Architects Planners, PC																																																																																																																																																																																																																																																																																																																																																																																																																																																																																																																																																																																																																																												
	<p>2.02 GYMNASIUM EQUIPMENT - GENERAL REQUIREMENTS</p> <p>A. Sizes and locations are specified herein.</p> <p>B. Provide mounting plates, brackets, and anchors of sufficient size and strength to securely attach equipment to building structure; comply with requirements of contract documents.</p> <p>C. Hardware: Heavy duty steel hardware, as recommended by manufacturer.</p> <p>2.03 WALL PADDING</p> <p>A. Wall Padding: Porter No. 005600 Series Durasafe wall pad, 2'-0" wide by 6'-0" high panels with no margins.</p> <p>1. 2-inch foam bonded to 7/16" oriented strand (OSB) board.</p> <p>2. 2'-0" x 6'-0" wall pad sizes typical; no margins.</p> <p>3. Entire pad upholstered in heavy 19 oz vinyl.</p> <p>4. Mildew and rot resistant</p> <p>5. Vinyl with 100PSI tensile strength with leather-like finish.</p> <p>6. Pads meet ASTM F2440 impact protection.</p> <p>7. Entire assembly is ASTM E-84 Class "A" fire rated and tested in accordance to meet IBC and NFPA 101 code requirement.</p> <p>8. Include required wall pad attachment clips.</p> <p>9. Provide molded inserts for electrical outlets, fire cabinets &amp; other features as required.</p> <p>10. Provide manufacturer's standard range of vinyl color options.</p> <p><b>PART 3 EXECUTION</b></p> <p>3.01 EXAMINATION</p> <p>A. Take field measurements to ensure proper fitting of work. If taking field measurements before fabrication will delay work, allow for adjustments within recommended tolerances.</p> <p>B. Examine sub-surfaces to receive Work and report detrimental conditions in writing to Architect. Commencement of Work will be construed as acceptance of sub-surfaces.</p> <p>C. Verify that electrical services are correctly located and of the proper characteristics.</p> <p>3.02 INSTALLATION</p> <p>A. Install athletic equipment in strict accordance with the Drawings and manufacturer's specifications, instructions and recommendations.</p> <p>B. Install equipment rigid, straight, plumb, and level.</p> <p>C. Secure all equipment with manufacturer's recommended anchoring devices.</p> <p>D. Install wall padding securely, with edges tight to wall and without wrinkles in fabric covering.</p> <p>Page High School Bleachers Emc2 #1382744.00</p> <p>Gymnasium Equipment 11 66 23 - 2</p>																																																																																																																																																																																																																																																																																																																																																																																																																																																																																																																																																																																																																																												
	Emc2 Group Architects Planners, PC																																																																																																																																																																																																																																																																																																																																																																																																																																																																																																																																																																																																																																												
	<p>3.04 CLEANING</p> <p>A. Remove any masking or protective covering from finished surfaces.</p> <p>B. Clean equipment in accordance with manufacturer's recommendations.</p> <p>C. During the course of the Work and on completion of the Work, remove and dispose of excess materials, equipment and debris away from premises. Leave Work in clean condition.</p> <p>3.05 PROTECTION</p> <p>A. Protect installed products until Substantial Completion.</p> <p>B. Replace damaged products before Substantial Completion.</p> <p><b>END OF SECTION</b></p> <p>Page High School Bleachers Emc2 #1382744.00</p> <p>Gymnasium Equipment 11 66 23 - 3</p>																																																																																																																																																																																																																																																																																																																																																																																																																																																																																																																																																																																																																																												
	<table><tr><td></td><td></td><td></td></tr><tr><td></td><td></td><td></td></tr><tr><td></td><td></td><td></td></tr><tr><td></td><td></td><td></td></tr><tr><td></td><td></td><td></td></tr><tr><td></td><td></td><td></td></tr><tr><td></td><td></td><td></td></tr><tr><td></td><td></td><td></td></tr><tr><td></td><td></td><td></td></tr><tr><td></td><td></td><td></td></tr><tr><td></td><td></td><td></td></tr><tr><td></td><td></td><td></td></tr><tr><td></td><td></td><td></td></tr><tr><td></td><td></td><td></td></tr><tr><td></td><td></td><td></td></tr><tr><td></td><td></td><td></td></tr><tr><td></td><td></td><td></td></tr><tr><td></td><td></td><td></td></tr><tr><td></td><td></td><td></td></tr><tr><td></td><td></td><td></td></tr><tr><td></td><td></td><td></td></tr><tr><td></td><td></td><td></td></tr><tr><td></td><td></td><td></td></tr><tr><td></td><td></td><td></td></tr><tr><td></td><td></td><td></td></tr><tr><td></td><td></td><td></td></tr><tr><td></td><td></td><td></td></tr><tr><td></td><td></td><td></td></tr><tr><td></td><td></td><td></td></tr><tr><td></td><td></td><td></td></tr><tr><td></td><td></td><td></td></tr><tr><td></td><td></td><td></td></tr><tr><td></td><td></td><td></td></tr><tr><td></td><td></td><td></td></tr><tr><td></td><td></td><td></td></tr><tr><td></td><td></td><td></td></tr><tr><td></td><td></td><td></td></tr><tr><td></td><td></td><td></td></tr><tr><td></td><td></td><td></td></tr><tr><td></td><td></td><td></td></tr><tr><td></td><td></td><td></td></tr><tr><td></td><td></td><td></td></tr><tr><td></td><td></td><td></td></tr><tr><td></td><td></td><td></td></tr><tr><td></td><td></td><td></td></tr><tr><td></td><td></td><td></td></tr><tr><td></td><td></td><td></td></tr><tr><td></td><td></td><td></td></tr><tr><td></td><td></td><td></td></tr><tr><td></td><td></td><td></td></tr><tr><td></td><td></td><td></td></tr><tr><td></td><td></td><td></td></tr><tr><td></td><td></td><td></td></tr><tr><td></td><td></td><td></td></tr><tr><td></td><td></td><td></td></tr><tr><td></td><td></td><td></td></tr><tr><td></td><td></td><td></td></tr><tr><td></td><td></td><td></td></tr><tr><td></td><td></td><td></td></tr><tr><td></td><td></td><td></td></tr><tr><td></td><td></td><td></td></tr><tr><td></td><td></td><td></td></tr><tr><td></td><td></td><td></td></tr><tr><td></td><td></td><td></td></tr><tr><td></td><td></td><td></td></tr><tr><td></td><td></td><td></td></tr><tr><td></td><td></td><td></td></tr><tr><td></td><td></td><td></td></tr><tr><td></td><td></td><td></td></tr><tr><td></td><td></td><td></td></tr><tr><td></td><td></td><td></td></tr><tr><td></td><td></td><td></td></tr><tr><td></td><td></td><td></td></tr><tr><td></td><td></td><td></td></tr><tr><td></td><td></td><td></td></tr><tr><td></td><td></td><td></td></tr><tr><td></td><td></td><td></td></tr><tr><td></td><td></td><td></td></tr><tr><td></td><td></td><td></td></tr><tr><td></td><td></td><td></td></tr><tr><td></td><td></td><td></td></tr><tr><td></td><td></td><td></td></tr><tr><td></td><td></td><td></td></tr><tr><td></td><td></td><td></td></tr><tr><td></td><td></td><td></td></tr><tr><td></td><td></td><td></td></tr><tr><td></td><td></td><td></td></tr><tr><td></td><td></td><td></td></tr><tr><td></td><td></td><td></td></tr><tr><td></td><td></td><td></td></tr><tr><td></td><td></td><td></td></tr><tr><td></td><td></td><td></td></tr><tr><td></td><td></td><td></td></tr><tr><td></td><td></td><td></td></tr><tr><td></td><td></td><td></td></tr><tr><td></td><td></td><td></td></tr><tr><td></td><td></td><td></td></tr><tr><td></td><td></td><td></td></tr><tr><td></td><td></td><td></td></tr><tr><td></td><td></td><td></td></tr><tr><td></td><td></td><td></td></tr><tr><td></td><td></td><td></td></tr><tr><td></td><td></td><td></td></tr><tr><td></td><td></td><td></td></tr><tr><td></td><td></td><td></td></tr><tr><td></td><td></td><td></td></tr><tr><td></td><td></td><td></td></tr><tr><td></td><td></td><td></td></tr><tr><td></td><td></td><td></td></tr><tr><td></td><td></td><td></td></tr><tr><td></td><td></td><td></td></tr><tr><td></td><td></td><td></td></tr><tr><td></td><td></td><td></td></tr><tr><td></td><td></td><td></td></tr><tr><td></td><td></td><td></td></tr><tr><td></td><td></td><td></td></tr><tr><td></td><td></td><td></td></tr><tr><td></td><td></td><td></td></tr><tr><td></td><td></td><td></td></tr><tr><td></td><td></td><td></td></tr><tr><td></td><td></td><td></td></tr><tr><td></td><td></td><td></td></tr><tr><td></td><td></td><td></td></tr><tr><td></td><td></td><td></td></tr><tr><td></td><td></td><td></td></tr><tr><td></td><td></td><td></td></tr><tr><td></td><td></td><td></td></tr><tr><td></td><td></td><td></td></tr><tr><td></td><td></td><td></td></tr><tr><td></td><td></td><td></td></tr><tr><td></td><td></td><td></td></tr><tr><td></td><td></td><td></td></tr><tr><td></td><td></td><td></td></tr><tr><td></td><td></td><td></td></tr><tr><td></td><td></td><td></td></tr><tr><td></td><td></td><td></td></tr><tr><td></td><td></td><td></td></tr><tr><td></td><td></td><td></td></tr><tr><td></td><td></td><td></td></tr><tr><td></td><td></td><td></td></tr><tr><td></td><td></td><td></td></tr><tr><td></td><td></td><td></td></tr><tr><td></td><td></td><td></td></tr><tr><td></td><td></td><td></td></tr><tr><td></td><td></td><td></td></tr><tr><td></td><td></td><td></td></tr><tr><td></td><td></td><td></td></tr><tr><td></td><td></td><td></td></tr><tr><td></td><td></td><td></td></tr><tr><td></td><td></td><td></td></tr><tr><td></td><td></td><td></td></tr><tr><td></td><td></td><td></td></tr><tr><td></td><td></td><td></td></tr><tr><td></td><td></td><td></td></tr><tr><td></td><td></td><td></td></tr><tr><td></td><td></td><td></td></tr><tr><td></td><td></td><td></td></tr><tr><td></td><td></td><td></td></tr><tr><td></td><td></td><td></td></tr><tr><td></td><td></td><td></td></tr><tr><td></td><td></td><td></td></tr><tr><td></td><td></td><td></td></tr><tr><td></td><td></td><td></td></tr><tr><td></td><td></td><td></td></tr><tr><td></td><td></td><td></td></tr><tr><td></td><td></td><td></td></tr><tr><td></td><td></td><td></td></tr><tr><td></td><td></td><td></td></tr><tr><td></td><td></td><td></td></tr><tr><td></td><td></td><td></td></tr><tr><td></td><td></td><td></td></tr><tr><td></td><td></td><td></td></tr><tr><td></td><td></td><td></td></tr><tr><td></td><td></td><td></td></tr><tr><td></td><td></td><td></td></tr><tr><td></td><td></td><td></td></tr><tr><td></td><td></td><td></td></tr><tr><td></td><td></td><td></td></tr><tr><td></td><td></td><td></td></tr><tr><td></td><td></td><td></td></tr><tr><td></td><td></td><td></td></tr><tr><td></td><td></td><td></td></tr><tr><td></td><td></td><td></td></tr><tr><td></td><td></td><td></td></tr><tr><td></td><td></td><td></td></tr><tr><td></td><td></td><td></td></tr><tr><td></td><td></td><td></td></tr><tr><td></td><td></td><td></td></tr><tr><td></td><td></td><td></td></tr><tr><td></td><td></td><td></td></tr><tr><td></td><td></td><td></td></tr><tr><td></td><td></td><td></td></tr><tr><td></td><td></td><td></td></tr><tr><td></td><td></td><td></td></tr><tr><td></td><td></td><td></td></tr><tr><td></td><td></td><td></td></tr><tr><td></td><td></td><td></td></tr><tr><td></td><td></td><td></td></tr><tr><td></td><td></td><td></td></tr></table>																																																																																																																																																																																																																																																																																																																																																																																																																																																																																																																																																																																																																																												

#	REVISIONS / SUBMISSIONS	DATE
PAGE UNIFIED SCHOOL DISTRICT		
PAGE HS - MAIN GYM		
BLEACHER AND WALL PAD REVISION		
434 SOUTH LAKE POWELL BOULEVARD, PAGE, AZ 86040		
		Emc2 GROUP ARCHITECTS PLANNERS, PC 1635 N. Greenfield Road, Suite 144 Mesa, Arizona 85205 P 480 830 3838 F 480 830 3860 <a href="http://www.emc2architects.com">www.emc2architects.com</a>
DRAWING TITLE:		
SPECIFICATIONS CONTINUED		
	DESIGNED BY: Designer	PROJECT NO. 13820744.00
	DRAWN BY: Author	SCALE: 12" = 1'-0"
	CHECKED BY: Checker	DRAWING NO.
	DATE: February 1, 2021 DATA FILE:	
A701		



C:\Users\jflowers\Documents\FACE HS BLEACHERS Main Gym\_CENTRAL\_jflowers.rvt

R  
Q  
P  
N  
M  
L  
K  
J  
H  
G  
F  
E  
D  
C  
B  
A

PAGE

HOME



OF THE


SAND DEVILS

SAND DEVILS

L1	WALL PAD MOCK UP
12" ± 1'-0"	

15'-0"

6'-0"



F1	WALL PAD
3/4" ± 1'-0"	

208/230 VAC - POWER REQUIREMENTS

POWER SOURCE

VOLTAGE: 208/230 VAC    PHASE: THREE  
AMP: 20    FREQ: 60 HZ  
NOTES: 5 WIRE W/ NEUTRAL & GROUND

120 VAC - POWER REQUIREMENTS

POWER SOURCE

VOLTAGE: 120 VAC    PHASE: 1  
AMP: 20    FREQ: 60 HZ  
NOTES: 3 WIRE (POWER, NEUTRAL & GROUND)

AISLE LIGHTS (IF REQUIRED)

AISLE LIGHTS

VOLTAGE: 120 VAC    PHASE: 1  
AMP: 15    FREQ: 60 HZ  
NOTES: 120/24 TRANSFORMER



UL RATED TO MEET - ELECTRICAL DRIVES  
AND CONTROLS FOR FOLDING AND  
TELESCOPIC SEATING - FHJU.E479554

NOTE: JUNCTION BOX LOCATION  
24" ABOVE FINISH FLOOR, BELOW 6 ROWS  
48" ABOVE FINISH FLOOR, 6 ROWS OR GREATER

NOTE: READILY ACCESSIBLE DISCONNECTION BOX  
AND WIRING SUPPLIED AND LOCATED BY OTHERS  
AS REQUIRED BY N.E.C.

2/1/2021 12:40:04 PM

15	16	17	18	19	20	21	22	23	24
----	----	----	----	----	----	----	----	----	----

#	REVISIONS / SUBMISSIONS	DATE
PAGE UNIFIED SCHOOL DISTRICT		
PAGE HS - MAIN GYM		
BLEACHER AND WALL PAD REVISION		
434 SOUTH LAKE POWELL BOULEVARD, PAGE, AZ 86040		
		Emc2 GROUP ARCHITECTS PLANNERS, PC 1635 N. Greenfield Road, Suite 144 Mesa, Arizona 85205 P 480 830 3838 F 480 830 3860 www.emc2architects.com
DRAWING TITLE: SPECIFICATIONS CONTINUED		
	DESIGNED BY: Designer	PROJECT NO. 13820744.00
	DRAWN BY: Author	SCALE: As indicated
	CHECKED BY: Checker	DRAWING NO.
	DATE: February 1, 2021 DATA FILE:	A702

15	16	17	18	19	20	21	22	23	24
----	----	----	----	----	----	----	----	----	----