

Prepared by:
BWS Architects
261 N. Court Ave.
Tucson, Arizona 85701

Project:
Oracle School District
Roofing Project No. 2
Mountain Vista School Reroofing - Science



ADDENDUM NO. 1
November 3, 2020

All requirements contained in the Contract Documents dated October 15, 2020 shall apply to this Addendum, and the general character of the Work called for in this Addendum shall be the same as originally set forth in the applicable portions of the Contract Documents for similar Work, unless otherwise specified under this Addendum, and all incidental Work necessitated by this Addendum as required to complete the Work shall be included in the bids, even though not particularly mentioned in this Addendum.

This Addendum is hereby made a part of the Contract Documents. Acknowledge receipt of this Addendum in the space provided on the proposal form. Failure to do so may subject bidder to disqualification.

DRAWINGS ISSUED WITH THIS ADDENDUM

1. SK-1 – Scupper Detail

SPECIFICATIONS ISSUED WITH THIS ADDENDUM:

1. Section 076100 – Metal Roofing Repair with minor revisions.

GENERAL ITEMS: NA

SPECIFICATION ITEMS:

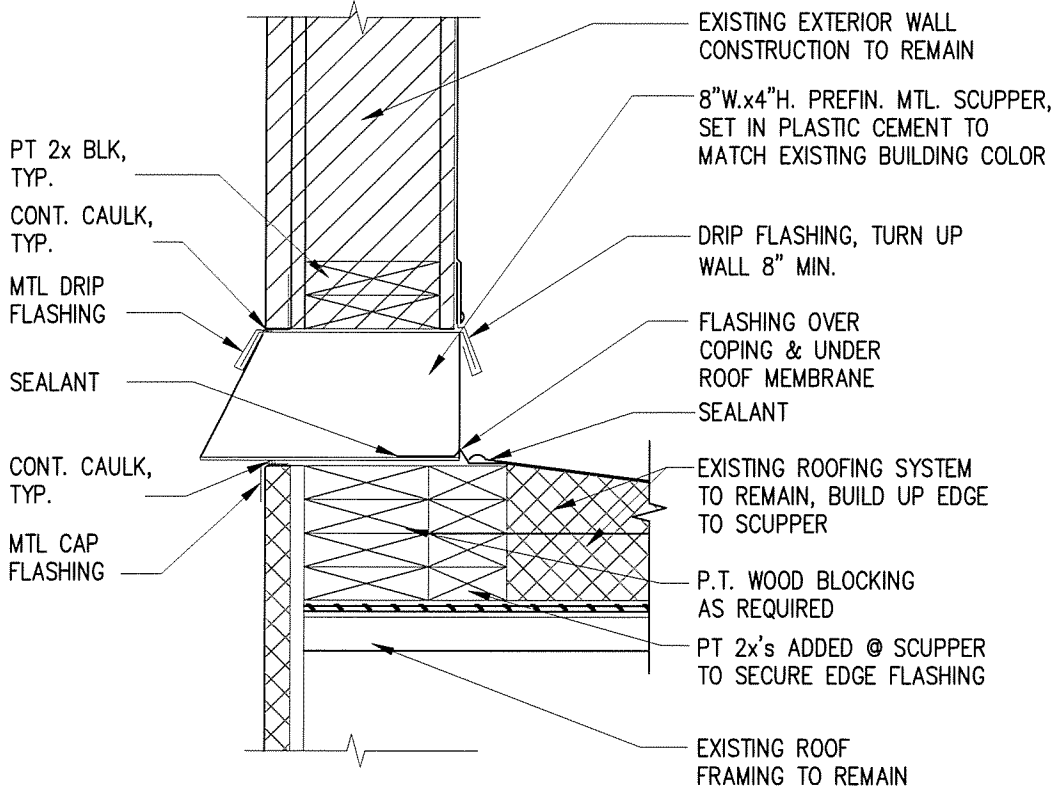
1. Section 078500 – Coating Roofing: Revise paragraph 3.2 C.:
 - a. Apply a coat of #103 Crack and Joint Sealant over fastener heads and joints at metal roofs; seams, cracks, and joints in built-up roofs. Fill all cracks and openings in parapets. Embed polyester roof fabric into wet sealant and recoat with same material. All gaps should be treated in this method.

DRAWING ITEMS

1. AHU: Remove electrical box from sheet metal curb and remount on equipment housing.
2. Overflow Drains: These are currently noted to remain and to receive new overflow drain fittings. Per field discussion, cut of and cap these overflow pipes below new roof line, and provide sheet metal cap on each outflow below the building soffit. Directly behind each main roof drain, provide new sheet metal through-wall scupper flashed into new roof and into new hole cut in frame wall. See attached sketch.

PRIOR APPROVALS: The following items have been approved for manufacturer only for purposes of bidding the project. Such approval does not exempt the manufacturer from complying with all particular requirements of the plans and specification - NA

END OF ADDENDUM NO. 1



SCUPPER DETAIL

SCALE: 1 1/2" = 1'-0"

ORACLE SCHOOL DISTRICT
MOUNTAIN VISTA ELEMENTARY SCHOOL
RE-ROOFING
2618 W. El Paseo, Oracle, AZ 85623

Title: Sketch 1

Job No.: 2001.200

Drawn By:

Issuance: _____
 Issue Date: 11/02/20
 Reference RFI: _____
 Reference Dwg: SK-1

bws ARCHITECTS

BURNS WALD-HOPKINS SHAMBACH ARCHITECTS

261 North Court Avenue
 Tucson, Arizona 85701

520.795.2705 Fax 520.795.6171

SECTION 076100 - METAL ROOF REPAIR

PART 1 - GENERAL

1.1 RELATED DOCUMENTS:

- A. Drawings and general provisions of Contract, including General and Supplementary Conditions and Division-1 Specification sections, apply to work of this section.

1.2 DESCRIPTION: Furnish all labor, material, tools, equipment and services to remove existing fasteners, and provide new fasteners. To repair, patch and replace metal trim and flashing as needed.

- A. Section 075800 – Coating for Roofing. This section prescribes coating of fasteners and taping joints and preparation of the metal roofing surface to receive elastomeric coating..
- B. Metal Roofing appears to be of the exposed fasteners type used on pre-engineered metal buildings and spans over purlins below. Buildings 1001 and 1003 are at an approximate slope of at least 3:12, whereas Building 1005 is likely less than 1:12.

1.3 REFERENCES:

- A. SMACNA: Architectural Sheet Metal Manual, latest edition.
- B. ASTM A 653 - Grade 40 - Structural (Physical) Quality Steel Sheet

PART 2 - PRODUCTS

2.1 METAL ROOF PANELS: Metal roof panels shall remain in place and be repaired as needed.

- A. Fasteners and Clips: Compatible with panels, non-corrosive. All exposed fasteners shall be provided with UV-resistant resilient gaskets. Fasteners shall be of diameter to secure engage metal and of a length to provide a minimum of 3/4" penetration of the substrate.

2.2 FLASHING AND TRIM: Same material and gage as metal panels.

2.3 PRODUCT HANDLING: Care should be taken to avoid gouging, scratching, or denting of metal panels or components. When working on existing roofs, provide supplemental supports for workers to avoid damage, denting, bowing, etc. of roofing panels.

PART 3 - EXECUTION

3.1 EXAMINATION: Examine the existing roof and existing flashing and trim.

ORACLE SCHOOL DISTRICT- MOUNTAIN VISTA ELEMENTARY
RE-ROOFING
CONSTRUCTION DOCUMENTS
ADDENDUM NO. 1

BWS 2001.000

- 3.2 PREPARATION: Field measure and verify site conditions prior to fabrication of materials. Protect elements surrounding this work from damage and disfigurement.
- 3.3 FASTENERS: Provide new fasteners with gaskets for all fasteners. Remove existing fasteners, re-flatten insertion hole to prevent cutting edge damage to new gaskets. Provide new fasteners as needed to secure all gaps or loose panels. Provide fasteners back to walls along all rakes at 6' o.c. Fasten snugly.
 - A. All flashing, trim and miscellaneous items shall be carefully installed with folded edges in accordance with recommended practice in the NRCA Roofing Manual, and the SMACNA Sheet Metal Manual.
- 3.5 CLEANING AND PROTECTION: Completed work shall be plumb and true, free of scrapes and dents.

END OF SECTION 076100