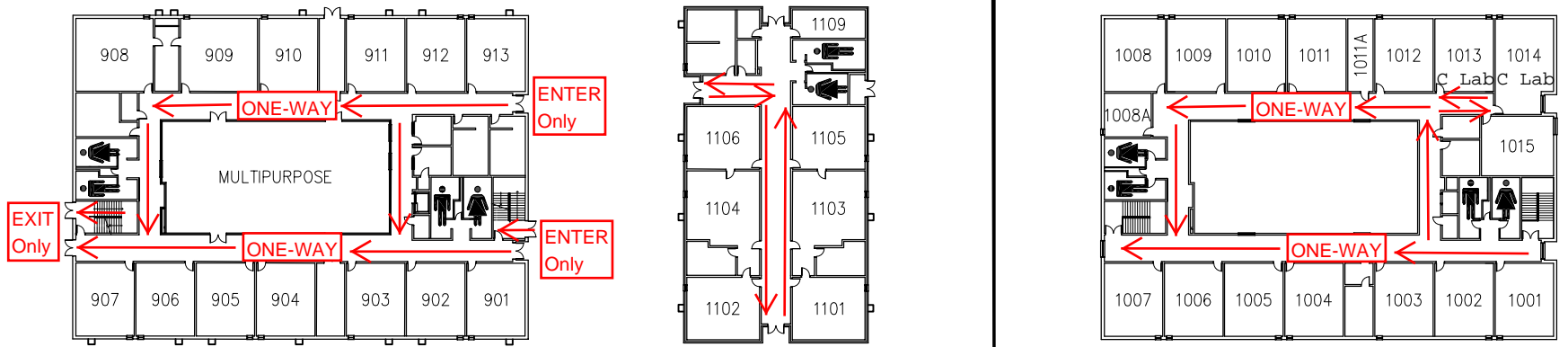
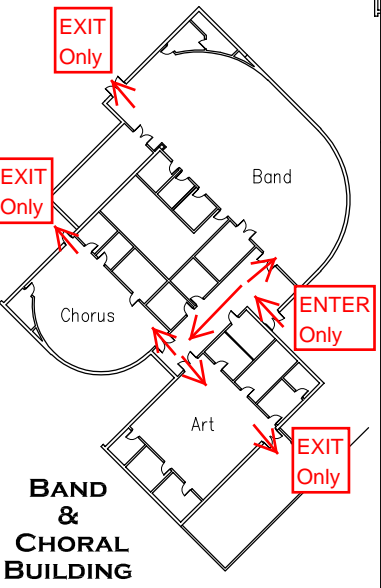
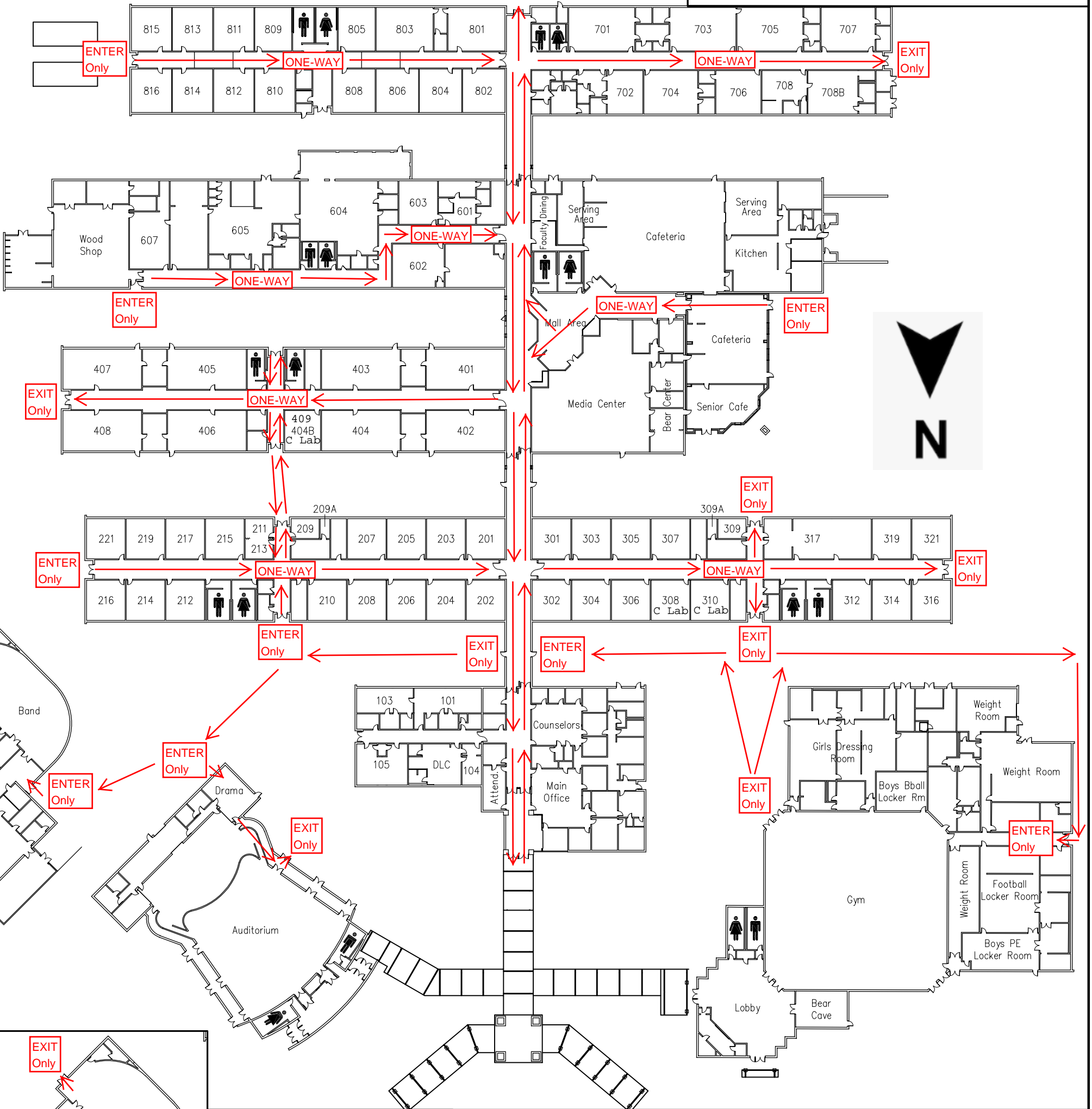


HCHS 2020-2021 CLASS-TO-CLASS TRANSITION Directional Hallway Map



**SECOND FLOOR
MULTIPURPOSE BUILDING**



**BAND &
CHORAL
BUILDING**



**SECOND FLOOR PLAN
AUDITORIUM**

*** This directional map applies ONLY during TRANSITION TIMES when students are **CHANGING CLASSES!****

*** This directional map DOES NOT APPLY to student and staff travel before or after school (arrival and dismissal) nor during the lunch rotation time.**

- Before school, when students are released from their holding areas, cars, or arrive on campus (7:45-8:00), students should proceed to 1st period using the shortest route possible without stopping or gathering with other students.
- During lunch times, teachers should escort students to and from the cafeteria using the shortest route possible.
- After school, students should proceed to their mode of transportation home using the shortest route possible, after being released at their designated time.