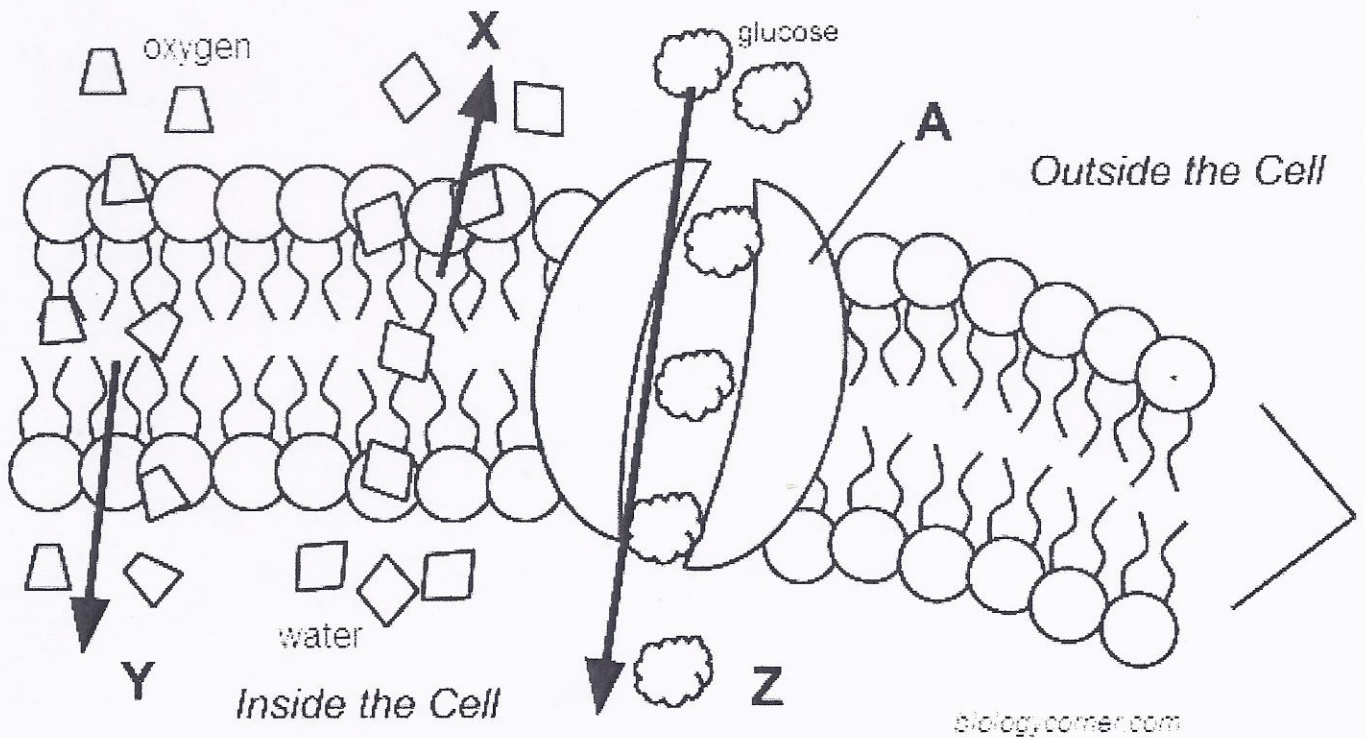


# Cell Membrane and Transport



Match the structure/process to the letter:

1. Phospholipid bilayer \_\_\_\_\_
2. Osmosis \_\_\_\_\_
3. Simple Diffusion \_\_\_\_\_
4. Facilitated Diffusion \_\_\_\_\_
5. Channel protein \_\_\_\_\_
6. This cell would be in a [ hypertonic / hypotonic / isotonic ] solution.
7. All of the processes in the image are examples of [ active / passive ] transport.
8. The cell membrane can be described as [ semi-permeable / impermeable ]
9. There is more glucose [ inside / outside ] the cell. (Hint: Look at the direction it is moving)
10. Over time, this cell will [ shrink / swell ]