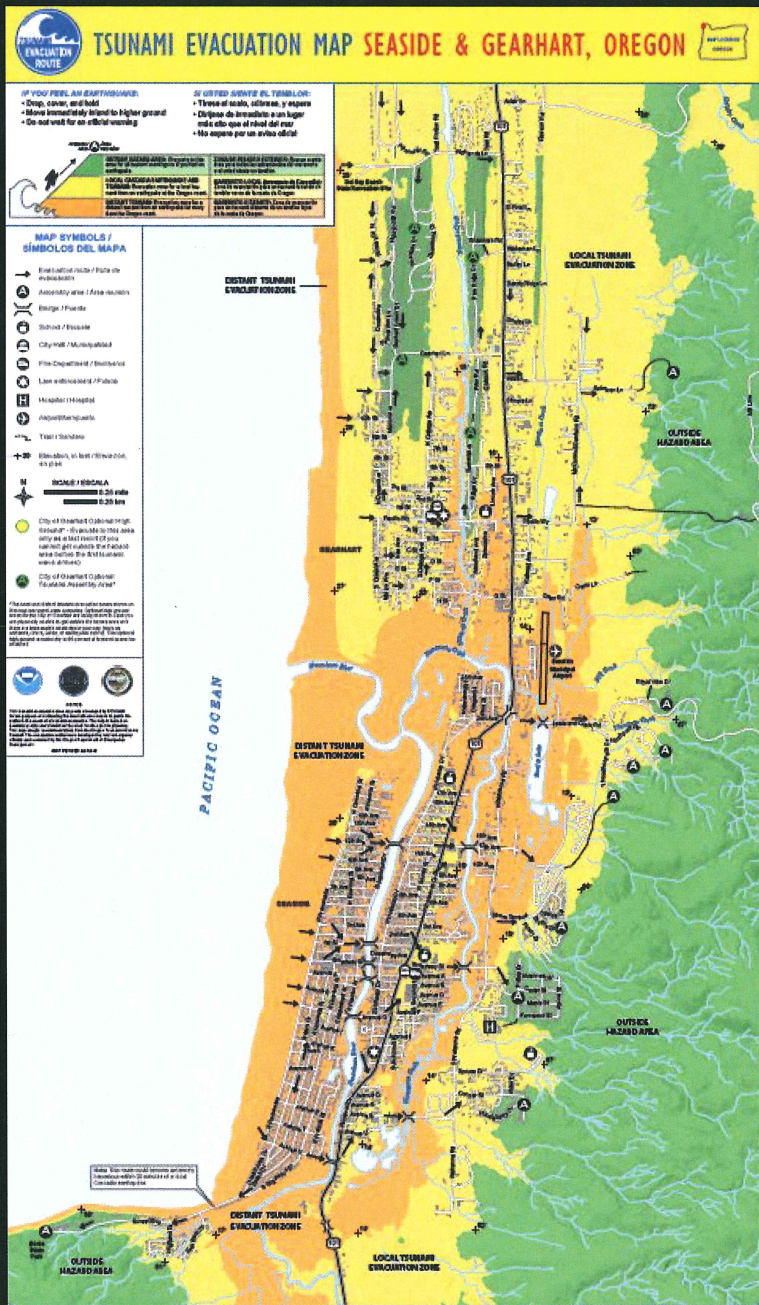


Seaside School District  
Presentation to Seaside Planning Commission







This application result of  
25 Year Planning Effort

**ORS 455.446 and 455.447**

- State Agency (DOGAMI & DLCD) Coordination
- City of Seaside Public Facilities Review & UGB Expansion Criteria
- Extensive Geological & Tsunami Studies
- Cooperation with Hospital
- Weyerhaeuser Land Donation
- Public Outreach & Education
- Bond Measures

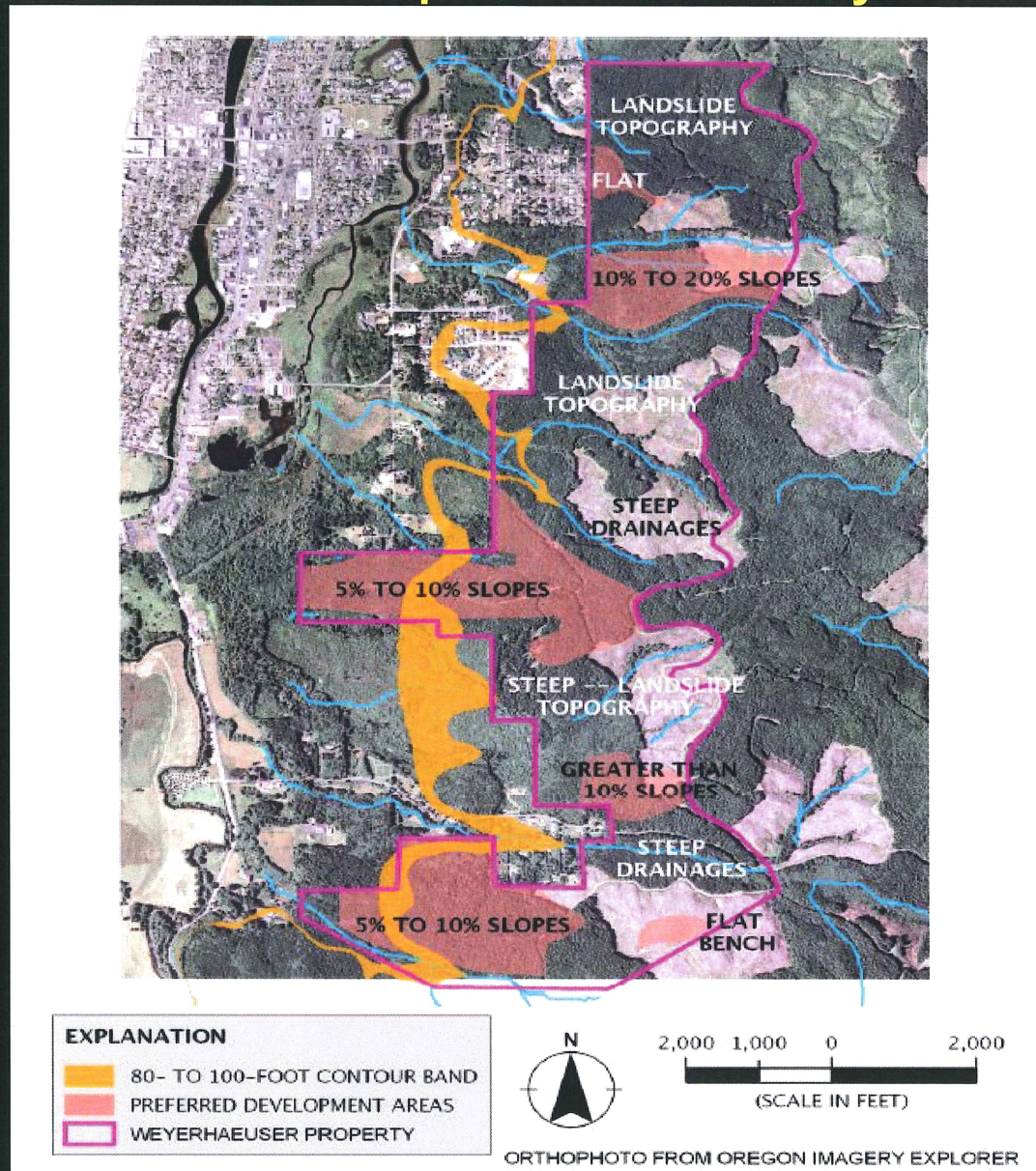


## City's Adopted UGB Amendment Criteria (2010)

- a) **Location: Adjacent to City Limit**
- b) **Size: Large enough for school campus (~ 50 acres)**
- c) **Topography: Average slope 15% or less**
- d) **Access: From at least one public street and one emergency street**
- e) **Geology: Geological conditions suitable for school construction**
- f) **Tsunami inundation zone: above 80-foot contour**
- g) **Public utilities: Served or capable of being served by public utilities**

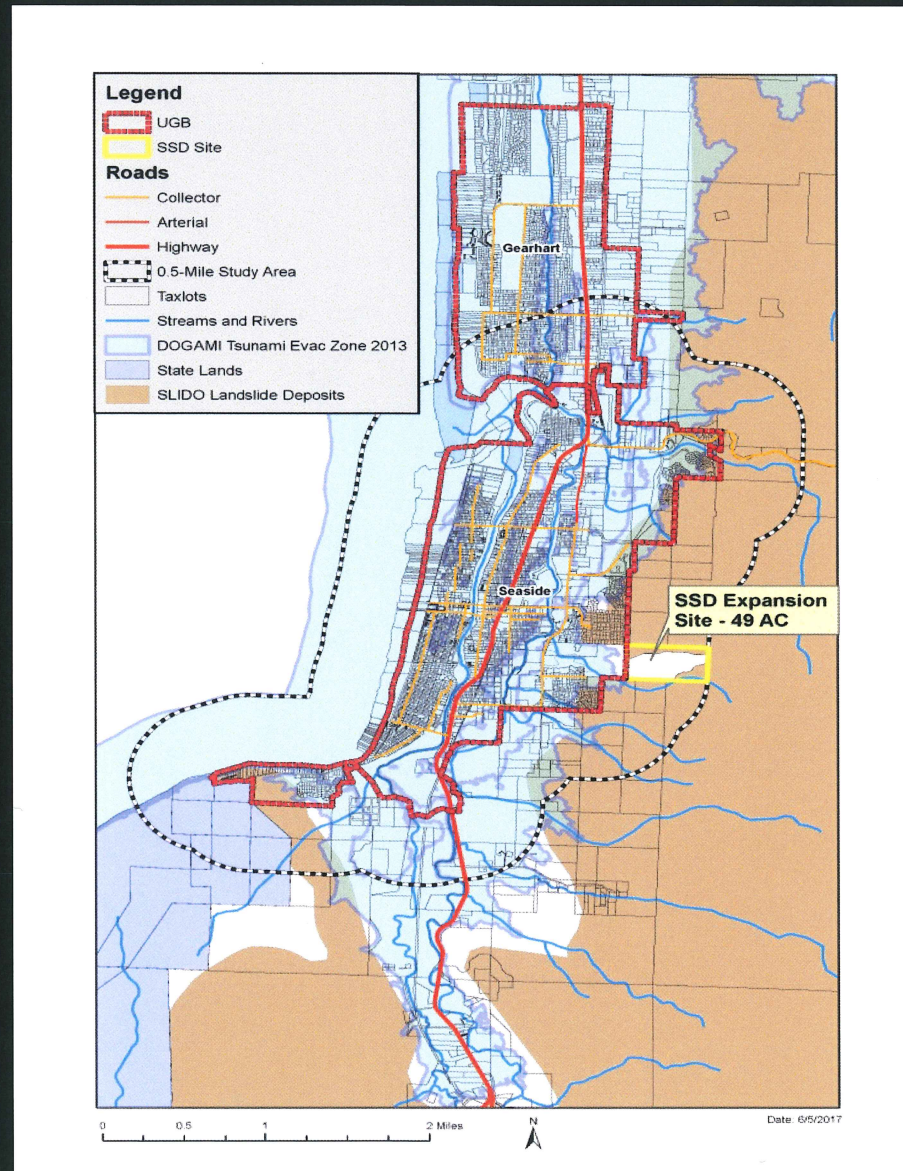


# Alternative School Campus Sites Carefully Considered



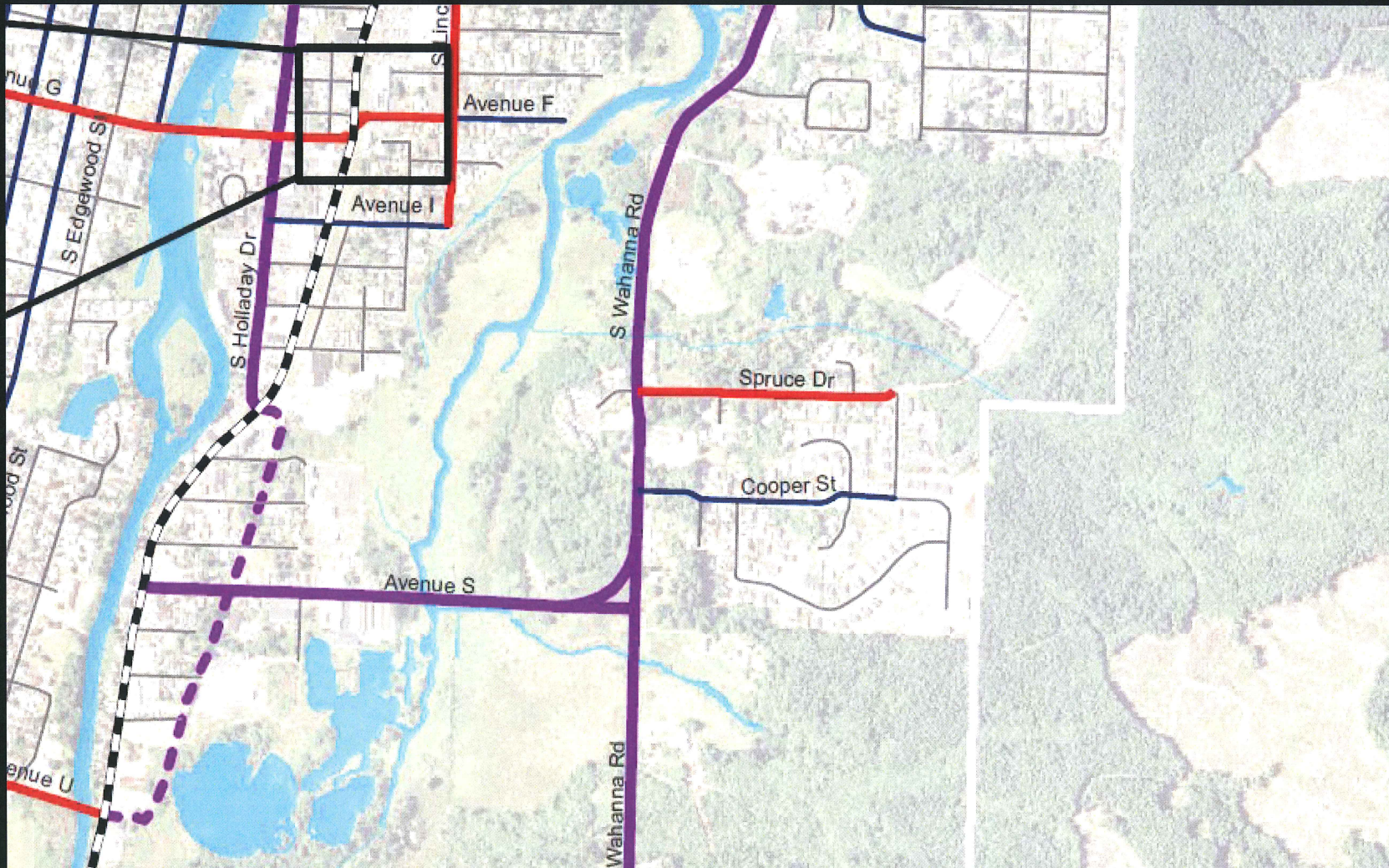


# Proposed School Campus Site Only Site that Meets all Seven City Criteria





Only Site w/ access to Major Collector Street  
(Other sites have no access or only local street access  
Most don't have secondary emergency access)





## The Proposed UGB Expansion Area Avoids China and Coho Creeks





Preliminary Conceptual Site Plan Will Change –  
District must return to Planning Commission for  
Conditional Use & Master Plan Review





# Questions?

**SCHOOL BOND PASSES!**  
**Thank you!**

