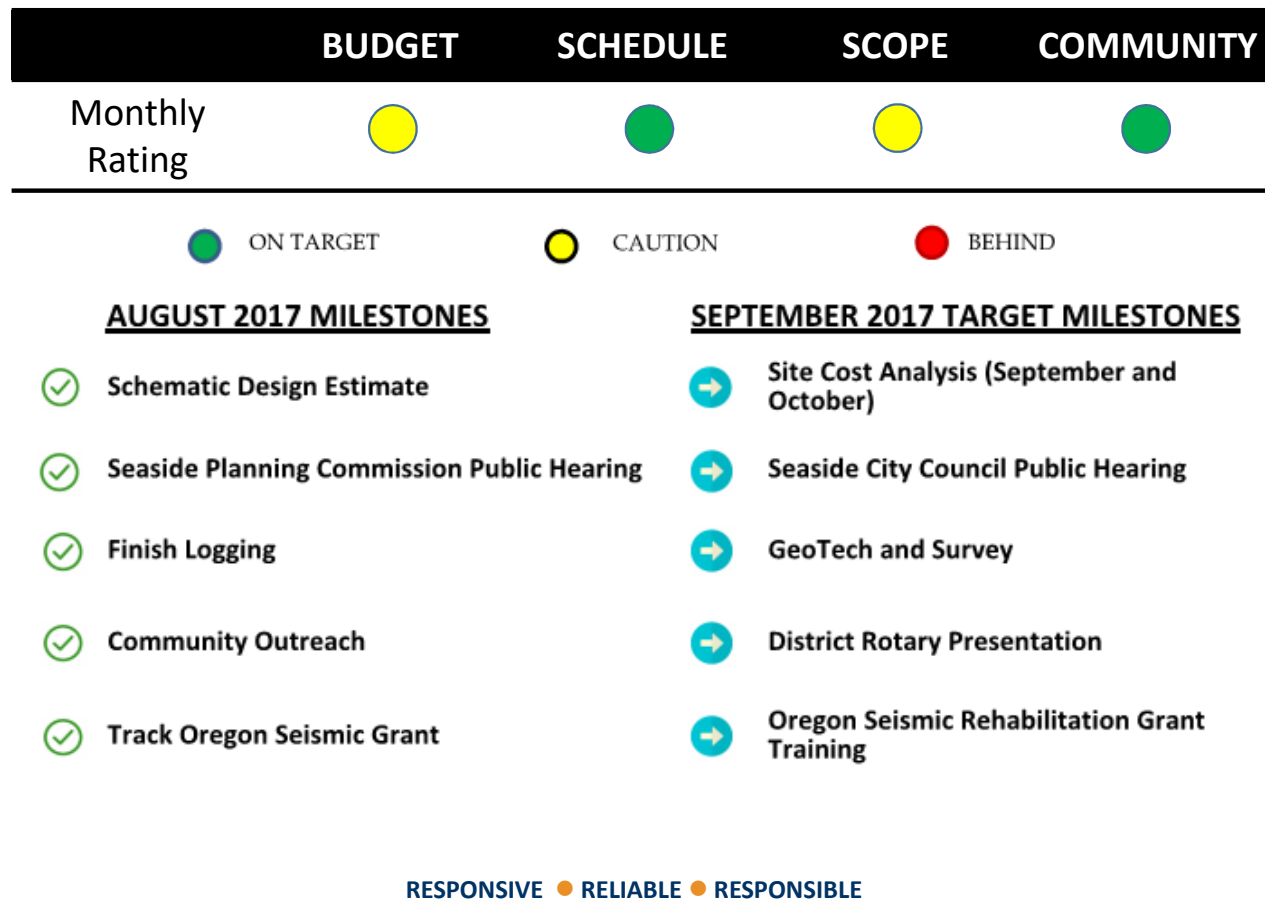


# SEASIDE SCHOOLS

## CONSTRUCTION PROJECT



# PROJECT DASHBOARD



# EXECUTIVE SUMMARY

- In August 2017, the Seaside Planning Commission unanimously recommended approval of the District's land use application based primarily on the detailed application narrative and supporting appendices, as well as extensive public testimony.
- Hoffman is continuing to work with the District to forecast construction activities which will start in Summer 2018. Identifying and planning for future work can help manage risks by implementing tools to find alternative solutions thus mitigating impacts.
- The Schematic Design cost estimate prepared by Hoffman and DOWA is over the target budget. The project team is working on reconciling the design and the scope to align it with the budget.

# PROJECT HIGHLIGHTS

- On August 1st, SSD staff along with DOWA-IBI and Hoffman toured two High Schools.
  - Sandy High School (designed by DOWA-IBI and built by Hoffman).
  - Beaverton's Mountainside High School (designed by Bora Architects and built by Hoffman).
- Congress woman Suzanne Bonamici and the Bond Oversight Committee visited the school site.



RESPONSIVE ● RELIABLE ● RESPONSIBLE



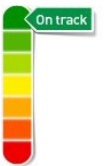
# PROJECT UPDATES



- **DESIGN:** In August and September 2017 design efforts are focused on site analysis to figure out the most efficient building location which will help reduce the amount of earthwork and sitework during construction.

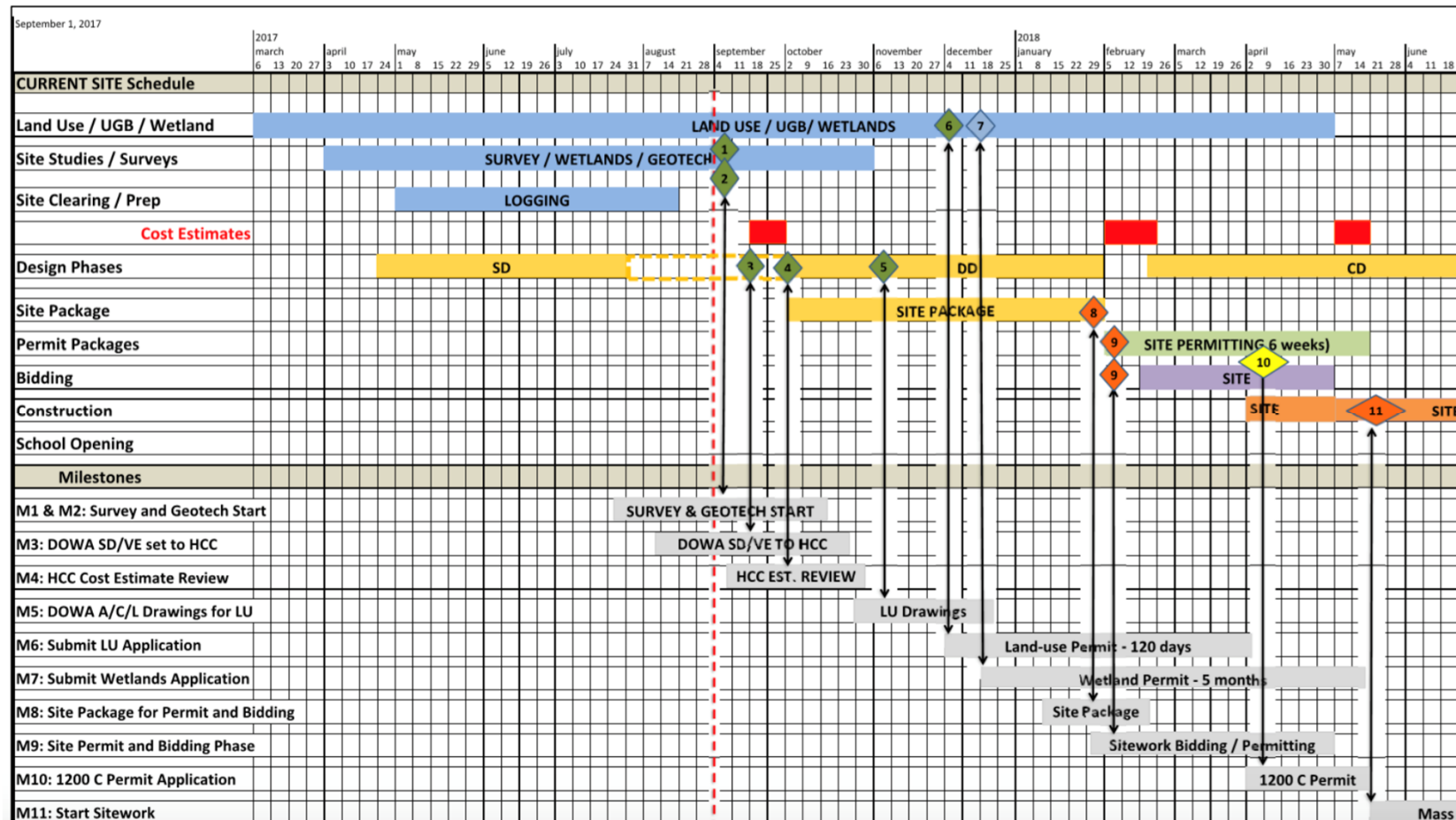


- **SCHEDULE:** The SSD 2017 GO Bond Project team met on August 29<sup>th</sup> for a Scheduling session at Hoffman Construction's office. Milestone dates for Pre-Construction phases such as design, land use, and permitting were discussed.

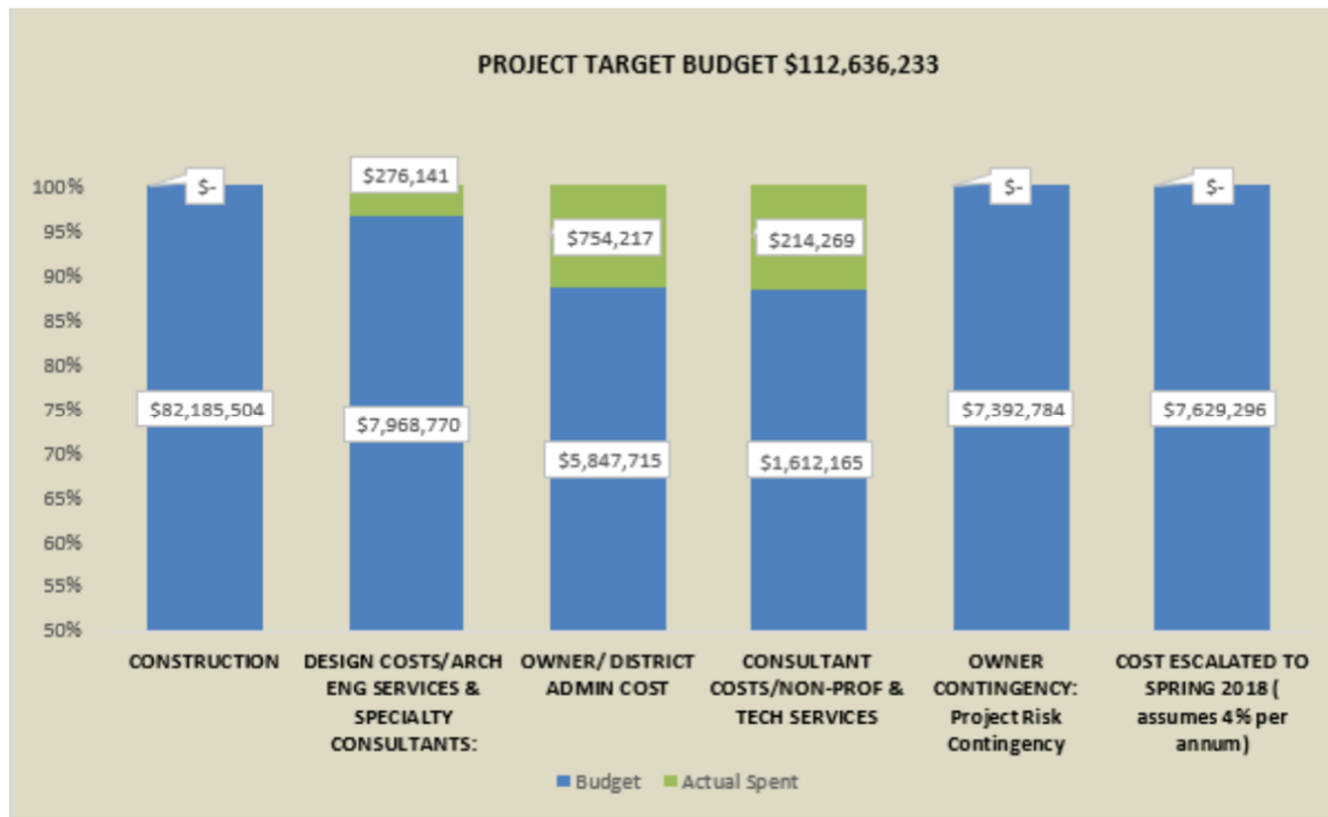


- **COMMUNITY ENGAGEMENT:** The District, DOWA-IBI, DAY CPM and Hoffman Construction will be participating in the Rotary Auction on October 14<sup>th</sup>.

# PRECONSTRUCTION SCHEDULE



# BUDGET



RESPONSIVE ● RELIABLE ● RESPONSIBLE



# Q&A



RESPONSIVE ● RELIABLE ● RESPONSIBLE