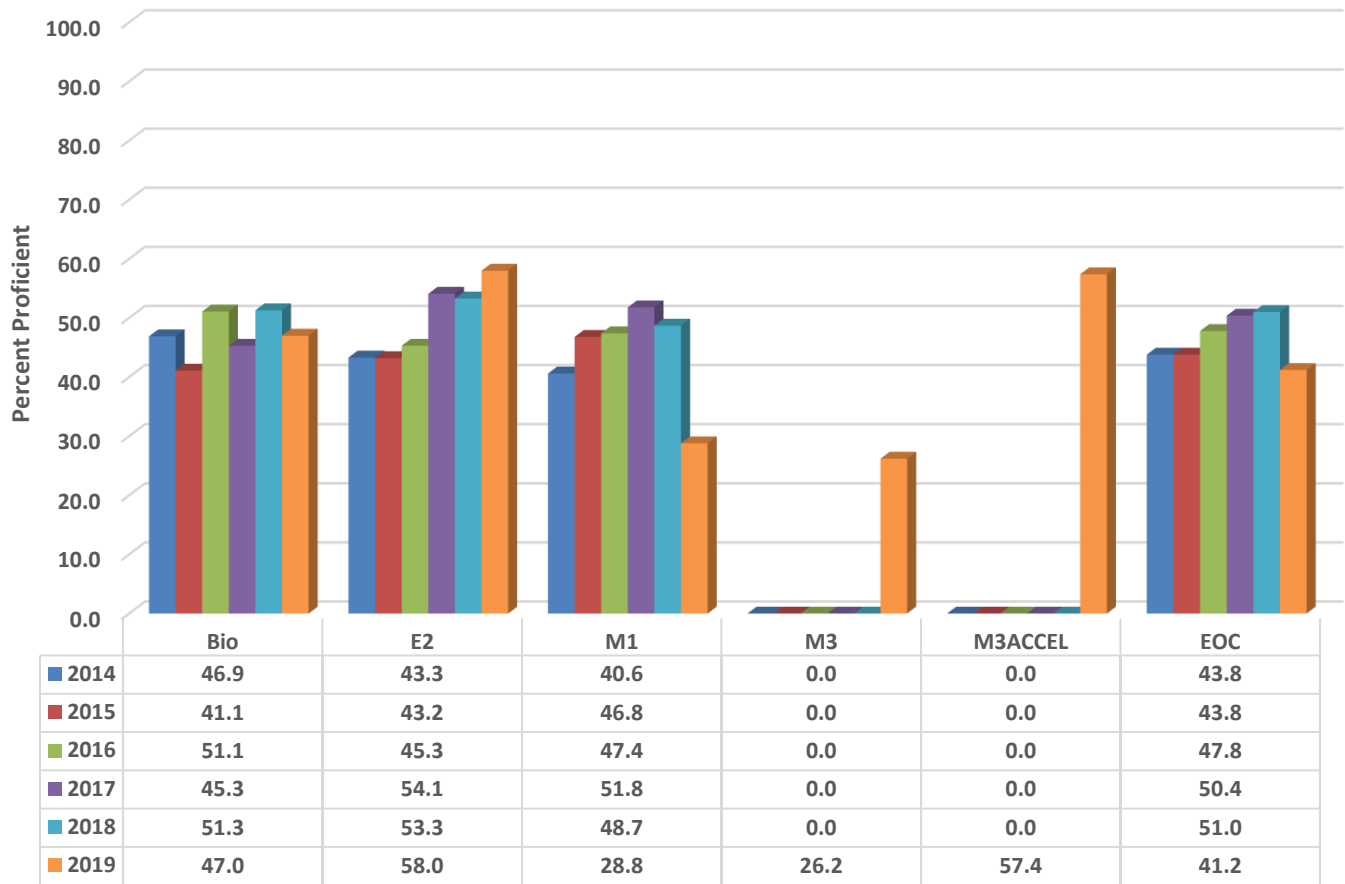


### Randleman High Six Year Comparison Using GLP



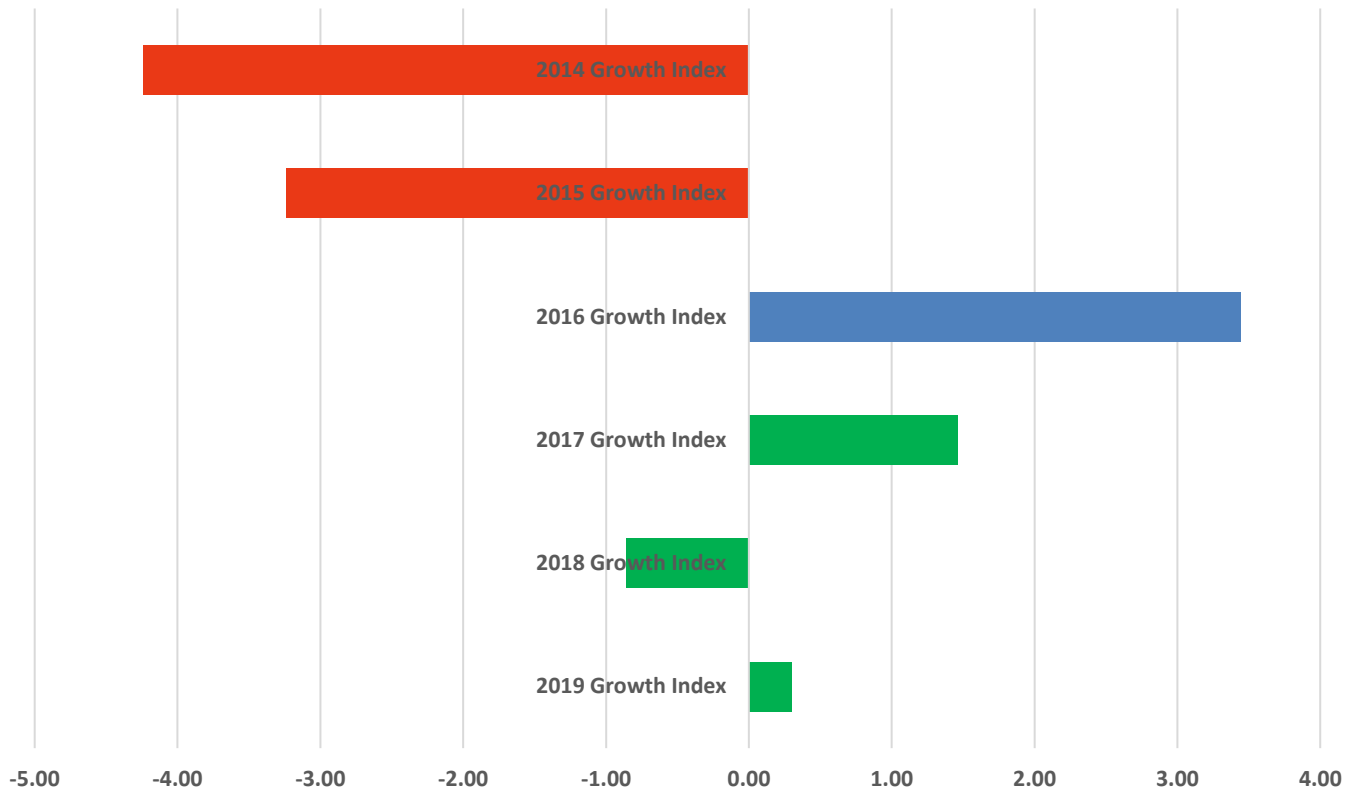
### READY Accountability Model

	CCR Denominator	CCR Percent	GLP Denominator	GLP Percent
2014	756	32.7	756	43.8
2015	733	32.3	733	43.8
2016	736	35.9	736	47.8
2017	687	39.6	687	50.4
2018	692	40.8	692	51.0
2019	830	25.8	830	41.2

### Growth and Participation Targets

	Growth Status	Total Targets	Targets Met	Target Percent
2014	Did Not Met Expected Growth	52	40	76.9
2015	Did Not Met Expected Growth	54	40	74.1
2016	Exceeded Expected Growth	27	26	96.3
2017	Met Expected Growth	26	26	100.0
2018	Met Expected Growth	20	20	100.0
2019	Met Expected Growth	20	20	100.0

## Randleman High Six Year Growth Index



	2019 Growth Index	2018 Growth Index	2017 Growth Index	2016 Growth Index	2015 Growth Index	2014 Growth Index
■ RHS	0.30	-0.86	1.46	3.44	-3.24	-4.24

### Growth Index

	School Accountability Type	Index	Level
<b>2014</b>	Math I, Biology, and English II	-4.24	Did Not Met Expected Growth
<b>2015</b>	Math I, Biology, and English II	-3.24	Did Not Met Expected Growth
<b>2016</b>	Math I, Biology, and English II	3.44	Exceeded Expected Growth
<b>2017</b>	Math I, Biology, and English II	1.46	Met Expected Growth
<b>2018</b>	NC Math I, Biology, and English II	-0.86	Met Expected Growth
<b>2019</b>	NC Math I, NC Math III, Biology, and English II	0.30	Met Expected Growth