



Return to Learn Plan

**Turkey Ford Public School District
23900 South 670 Road
Wyandotte, OK 74370
Office: 918-786-4902**

Adopted July 30, 2020



Turkey Ford Elementary PK-6 ONSite Instruction

Turkey Ford Elementary is excited to welcome our students back to campus. Our schools will follow current Oklahoma Department of Health (ODH) Guidelines to ensure student safety and will return to as normal a setting as possible.

Turkey Ford Elementary's plan of action for returning to school for the 2020-2021 school year is:

- ONSite learning in a classroom environment.
- Online learning will be available if the school closes due to COVID-19 or if your student has a medical condition which will not allow them to do ONSite learning. A physician's note is required for online learning. Notify the office regarding a request.

School will:



Be Safe

- Proper hand washing will be taught and encouraged throughout the day.
- Social distancing will be practiced as often as possible.
- Students will be screened each morning at school and at the bus stop to check temperatures of each student before they can attend school that day.
- Hand sanitizer will be available in each classroom.
- High traffic, high touch surfaces will be sanitized throughout the day.
- Students will wash their hands and/or use hand sanitizer each time they enter a new space.
- School buses will be cleaned between morning and afternoon routes as well as at the end of each day or trip.
- All personal belongings and devices will be used by individual student only.
- Face Coverings - The Oklahoma Department of Health, Center for Disease Control, and the American Academy of Pediatrics all strongly encourage the use of face coverings to reduce the spread of COVID-19.
 - Face coverings can be masks, gaiters, face shields, etc. If you are not sure if your child's face covering is acceptable, please reach out to your child's school office.
 - All students will wear a face covering when riding a school bus or district transportation since physical distancing will not be feasible.



- Adults and students grade 5 and above will wear face coverings when social distancing is not possible. (School entry, exit, hallways, bathroom). Students in grades K-4 are strongly encouraged to wear face coverings when physical distancing is not possible. This requirement follows the CDC recommendation that people 10 years old and up wear a face covering to ensure their safety. And that children ages 2-10 are strongly encouraged to do so, when appropriate. Teachers will make every effort to keep students physically distanced in the classroom, to reduce the need for face coverings. When safe physical distancing of students is not possible, students will be expected to wear their face covering. Any parent who wants their child to wear a face covering at all times is welcome to make that request known to their child's teacher.
- If students maintain physical distancing on the playground, face coverings will not be required. The CDC's definition of an individual who has had close personal contact is closer than 6 feet for 15 minutes or more. Staff members who are supervising students on the playground will be responsible for monitoring this. Any parent who wants their child to wear face covering, while on the playground, is welcome to make that request known to their child's teacher.
- Students may remove face-covering once seated at their lunch table.
- Exceptions to face-covering requirements will be made for those for whom it is not possible due to medical conditions, disability impact, or other health or safety factors. Face coverings should not be used on anyone who has trouble breathing or is unconscious; or anyone who is incapacitated or otherwise unable to remove the cloth face-covering without assistance. For those with specific health conditions that require they not wear a face covering, a physician's note shall be provided to the school.
- Face covering breaks will occur throughout the day. Breaks will occur when students can be six feet apart and ideally outside. Teachers will do breaks in the room when social distancing is possible.



Provide High Quality Instruction

- Focus will be on mastery of essential standards.
- Teachers will assess students for gaps in learning.
- Emphasis will be on personalized instruction.
- Scheduling will allow for remediation in each subject area.
- Students will practice on-line instruction during the school day using iPads in Pre-K through 2nd and Chromebooks 3-6th grades.
- Individual Education Plans (IEPs) and 504 Plans will be followed.



Elevate. Engage. Inspire. **Be Engaging**

Students will have the opportunity to interact with peers by:

- Interacting with teachers and peers and working collaboratively in safe ways within the classroom.
- Attending lunch outside of the classroom on a regular basis.
- Attending recess.
- Attending special activity classes (art, PE, computer, library).



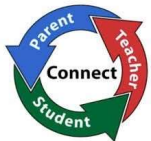
Technology

- Chromebooks are provided for 3-6 grades for in class use only. Check out will be considered for online learning, if needed.
- A non-refundable \$25 insurance fee will be paid in advance for Chromebook check out.



Be Flexible

- Options for students to shift to temporary online learning as needed.
- We will work with students and families to meet unique individual needs.



Have Open Communication

- Three way communications is critical.
- A variety of communication formats will be used to inform parents on a regular basis about safety, learning, and transition information.
- Resources will be provided to parents.
- Parents are asked to call/email the school each day in the event of a student absence.
- Please reach out to us with any questions you have concerning our ON Site learning.



Return to School follow Covid exposure:

Once a student/staff member is excluded from school, they may return if they meet the requirements listed below.

1. **UNTESTED**: Have not received a test proving or disproving COVID-19, but did experience symptoms may return if all 3 conditions below are met
 - At least 10 calendar days have passed since symptoms first appeared, **AND**
 - Fever free (without the use of fever-reducing medication) for 72 hours, **AND**
 - Symptoms have improved

1. **TESTED AND AWAITING RESULTS**: Persons who are suspected of having COVID-19 and are awaiting test results should be isolated at home until test results are received.

1. **POSITIVE RESULT**

Symptomatic Cases may return if the following conditions are met:

- 10 Calendar days have passed since symptoms first appeared, **AND**
- Fever free (without the use of fever-reducing medication) for 72 hours, **AND**
- Symptoms have improved

Asymptomatic Cases may return if the following conditions are met:

- 10 Calendar days have passed since the date sample was collected, **AND**
- Symptoms have not developed
- If symptoms develop during the 10 day isolation period, then follow the above criteria for symptomatic cases with a new isolation period starting from the day symptoms started.

4. **NEGATIVE RESULT**

- Known exposure to a COVID-19 case must be quarantined for 14 days. A negative test result within the 14 day quarantine period does NOT change the quarantine period; therefore, the person must finish their 14 days.
- No known exposure to a COVID-19 case-may return to work or school.

Once the above requirements are met, parents are expected to accompany their student(s) to school to be cleared in the office to return to class.

Other Students and Staff in the Household

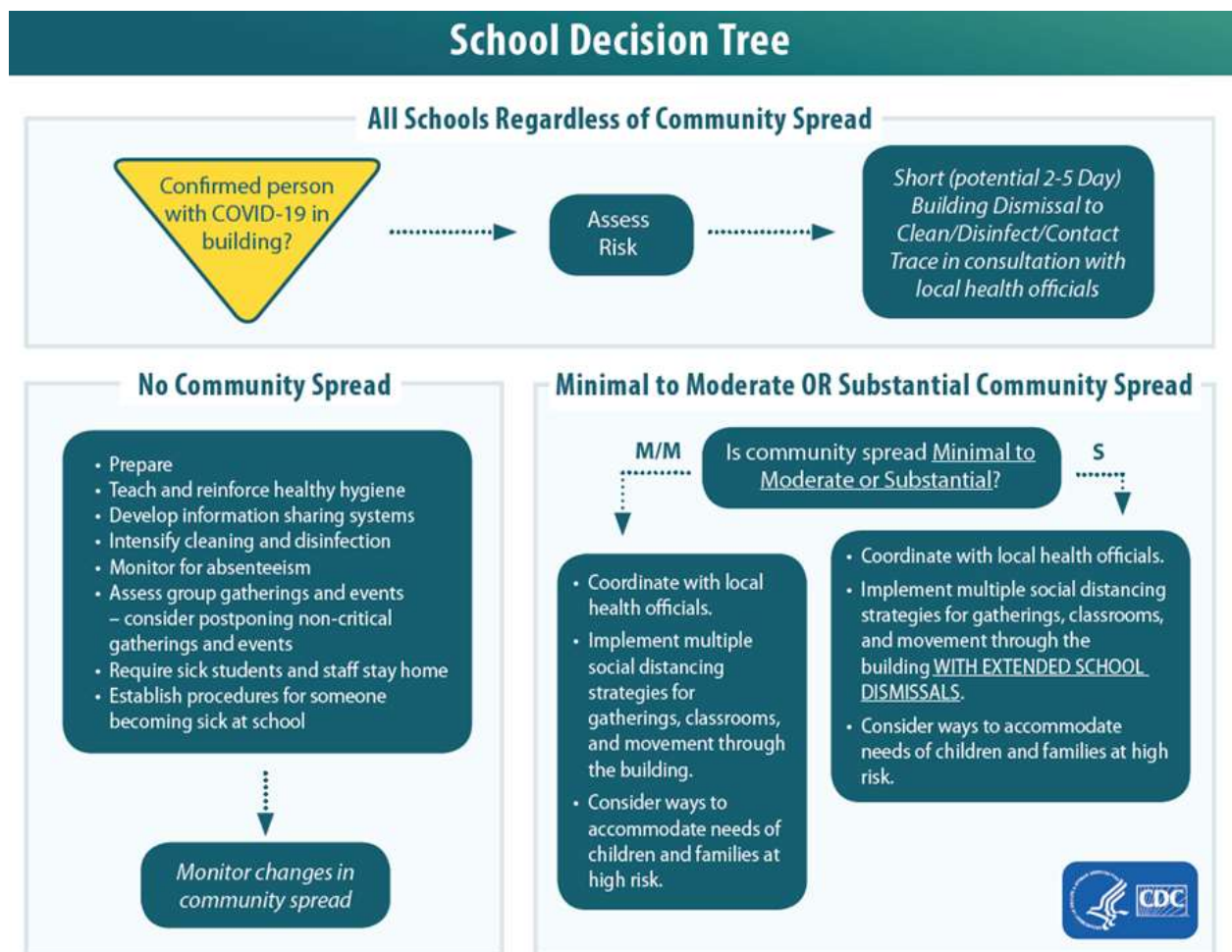
- If a student/staff member is excluded from school due to a positive COVID-19 test, other students and any staff members living in that same household are considered close contacts and will be excluded from school for a mandatory 14 day quarantine period, which begins after their last exposure to the case.



- If a student/staff member is excluded from school due to being identified as a close contact, then other students and any staff members living in that same household are considered contacts of a contact and do NOT need to be excluded from school unless they were also identified as a close contact of a case.

How do schools make decisions regarding COVID-19?

The following decision tree can be used to help schools determine which set of mitigation strategies may be most appropriate for their current situation.





FOR ADDITIONAL QUESTIONS CALL YOUR COUNTY HEALTH DEPARTMENT

I KNOW/THINK I HAVE COVID-19 WITH SYMPTOMS (ISOLATION)

You can be around others after -
10 days have passed since your
symptoms first appeared **AND**

Symptoms have dramatically
improved (cough, shortness of
breath) **AND**

You have been fever free for **3
days** (without use of fever
reducing medication)

I TESTED POSITIVE BUT HAVE NO SYMPTOMS (ISOLATION)

If you continue to have no
symptoms, you can be around
others after -

10 days have passed since
you were tested

If you develop symptoms after
testing positive, follow the
guidance for "I know or think
I had COVID-19 AND I had
symptoms"

I WAS A "CLOSE CONTACT" OF SOMEONE WITH COVID-19 (QUARANTINE)

You should quarantine (stay
home, monitor for symptoms)
for **14 days** AFTER LAST
EXPOSURE. This is based on
the time it takes to develop
illness.

Close contact means within 6
feet of the individual for at
least 10 minutes.

Contact your county health
department if you begin to
experience symptoms.

What Do My Test Results Mean?

FOR ADDITIONAL QUESTIONS CALL YOUR COUNTY HEALTH DEPARTMENT

IF YOU TEST POSITIVE FOR COVID-19 TAKE STEPS TO HELP PREVENT THE SPREAD

STAY HOME - ISOLATE

Do not leave your home, except to get medical care. Do not
visit public areas.

GET REST & STAY HYDRATED

SEPARATE YOURSELF FROM OTHERS

As much as possible, stay in a specific room and away from
other people and pets in your home.

FOLLOW TIMELINE ON THE PREVIOUS PAGE

A symptom or time-based strategy is generally recommended.
Repeated tests during your isolation or quarantine period will
only lift the requirements found on the previous page in certain
work situations.

IF YOU TEST NEGATIVE

If you were a "close contact" to a
confirmed case of COVID-19,
QUARANTINE and follow guidance
on previous page.

A NEGATIVE TEST RESULT DOES
NOT MEAN YOU WON'T GET SICK
LATER!

The sample may have been
collected very early in your infection
period and you could test positive
later.

Negative results do not release an
individual from quarantine or
isolation.



FAQs

What are the symptoms of Covid-19?

People with COVID-19 have reported having a wide range of symptoms – from mild symptoms to severe illness. Children have similar symptoms to adults and generally experience mild illness. Symptoms may appear 2-14 days after exposure to the virus. People with these symptoms may have COVID-19:

- Cough
- Shortness of breath or difficulty breathing
- Fever (100.4 or higher)
- Chills
- Muscle pain
- Sore throat
- New loss of taste or smell

This list does not include all possible symptoms. Other symptoms have been reported, including gastrointestinal symptoms like nausea, vomiting, or diarrhea (CDC, 2020).

What are the benefits of ONSite learning versus online learning? *While we understand the need for some families to choose online learning due to safety concerns or family health issues, our preference would be to have all children onsite receiving direct instruction from our educators. Relationships with teachers and peers, immediate feedback, social interactions, and daily structure are just a few of the benefits of onsite instruction.*

What happens if a student or teacher tests positive for COVID-19?

Our campuses will follow guidance provided by the Oklahoma Department of Education and Oklahoma Department of Health. Please view the following link for more information. The school will contact the Oklahoma Department of Health for guidance.
<https://coronavirus.health.ok.gov/what-you-should-know>

What happens if my child forgets his/her face covering?

Cloth face mask have been donated and disposable face masks will be provided, supplies are available.

Will visitors or outside guests be allowed in the school?

Not at this time. Outside visitors will be limited to essential business to reduce the risk of exposure to our students. Please call in advance and we will arrange a time to meet with you, as needed.



Will teachers and other adults be required to wear face coverings?

Teachers and other adults will wear a face mask and/or face shield when in close proximity of students.

Will water fountains be available?

Water fountains will be shut off. However, water filling stations will be available. Students should bring their own clear water bottle to school each day.

What will the classroom environment look like such as 6 ft apart and social distancing?

We will make every effort to ensure safe physical distancing of students. If small group instruction is needed, participants will face one direction and use hand sanitizer before and after that instruction.

What will bus transportation look like?

Families that can pick up and drop off their own students are encouraged to provide their own transportation. However, bus transportation will be provided. Due to the challenge of physical distancing, students will be required to wear a face covering on buses. Bus seats will be assigned and cleaned after every route.

What does the attendance policy look like for students?

If a student is well, they are expected to participate onsite. In the event a student becomes ill and is required to quarantine for an extended period of time, online learning will be offered as a temporary service and attendance requirements will be addressed at that time.

How will my child learn to use technology?

Students will have the opportunity to connect with technology beginning the first week of school. Our goal is to help all children feel comfortable using technology.

How will we ensure parents aren't sending their kids to school sick?

Pre-screening checklists will be provided to parents and students. Parents will be our partners in protecting the health and safety of all of our students and staff by keeping their child at home if they do not pass the pre-screening assessment contact the office.



What will lunchtime look like? Where will students eat lunch?

Current social distancing guidelines will be followed to have lunch in the cafeteria. It is important that meal time continue to be socially engaging for our students. Students will be able to eat a school provided meal or bring their own lunch from home. If you bring a lunchbox from home, consider using a bag that can be thrown away instead of taken back and forth and risking cross contamination or using a lunch box that can be easily cleaned and disinfected (not cloth).

Are students going to be allowed to use the microwave?

In an effort to assure proper sanitation procedures are being followed, the microwave will not be used at the beginning of the year. This is certainly an area we can re-evaluate as we move forward.

What will recess look like?

Students will have recess! Smaller groups of students will be utilizing the playground at the same time to allow for physical distancing during physical activity. Students will wash their hands or use hand sanitizer prior to and following recess.

How will students have access to restrooms in the buildings? *Classroom and hallway restrooms will be accessible to students throughout the day. Restrooms and other high traffic areas will be sanitized throughout the day.*

Is it safe for my child to return to school?

The American Academy of Pediatrics strongly advocates that all policy considerations for the coming school year should start with a goal of having students physically present in school.

Are the chemicals used to sanitize our schools potentially more dangerous to our students than COVID-19?

The chemicals used to sanitize our facilities are the same chemicals we have used for years. They are hospital grade disinfectants that have met the guidelines for the virus and are EPA approved.