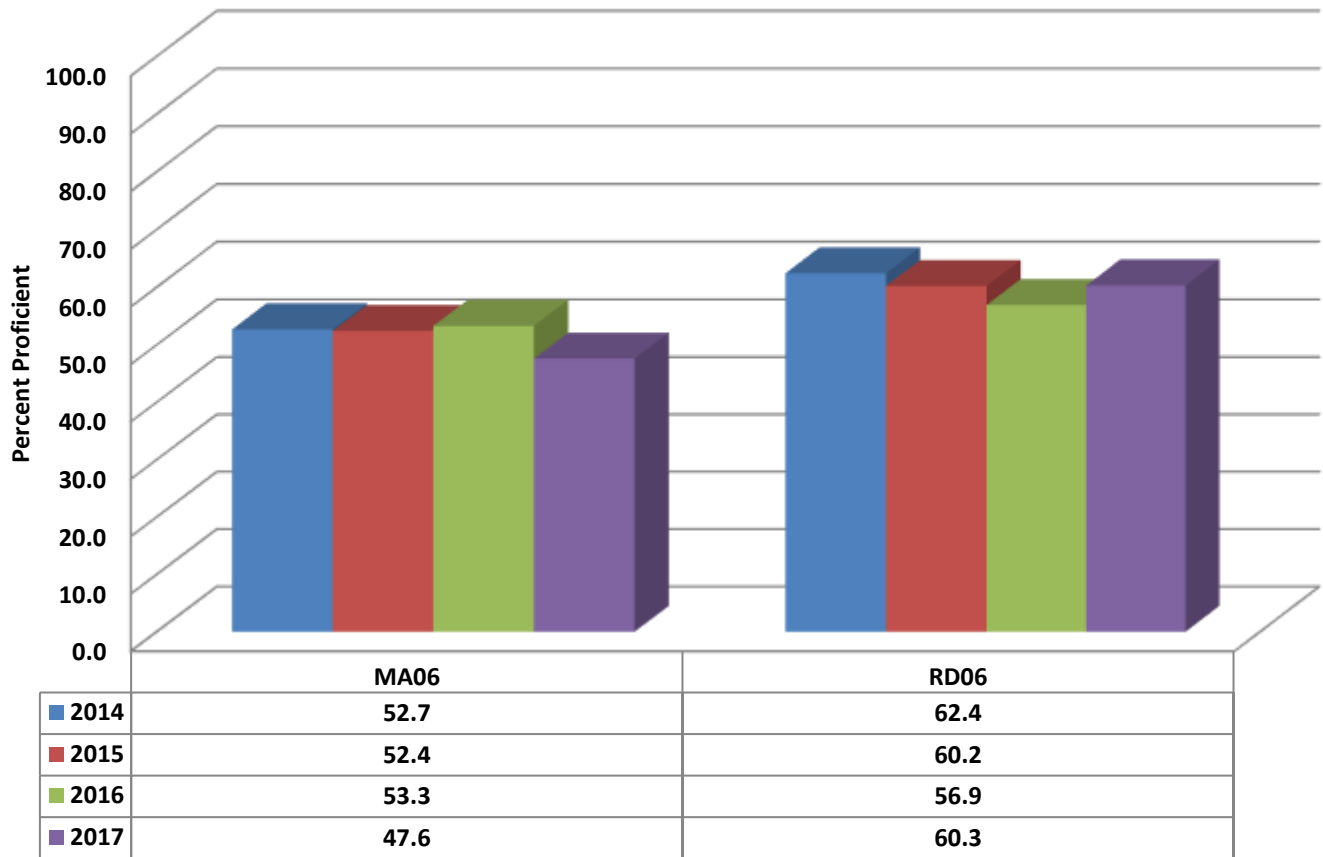


## Braxton Craven Middle Four Year Comparison Using GLP



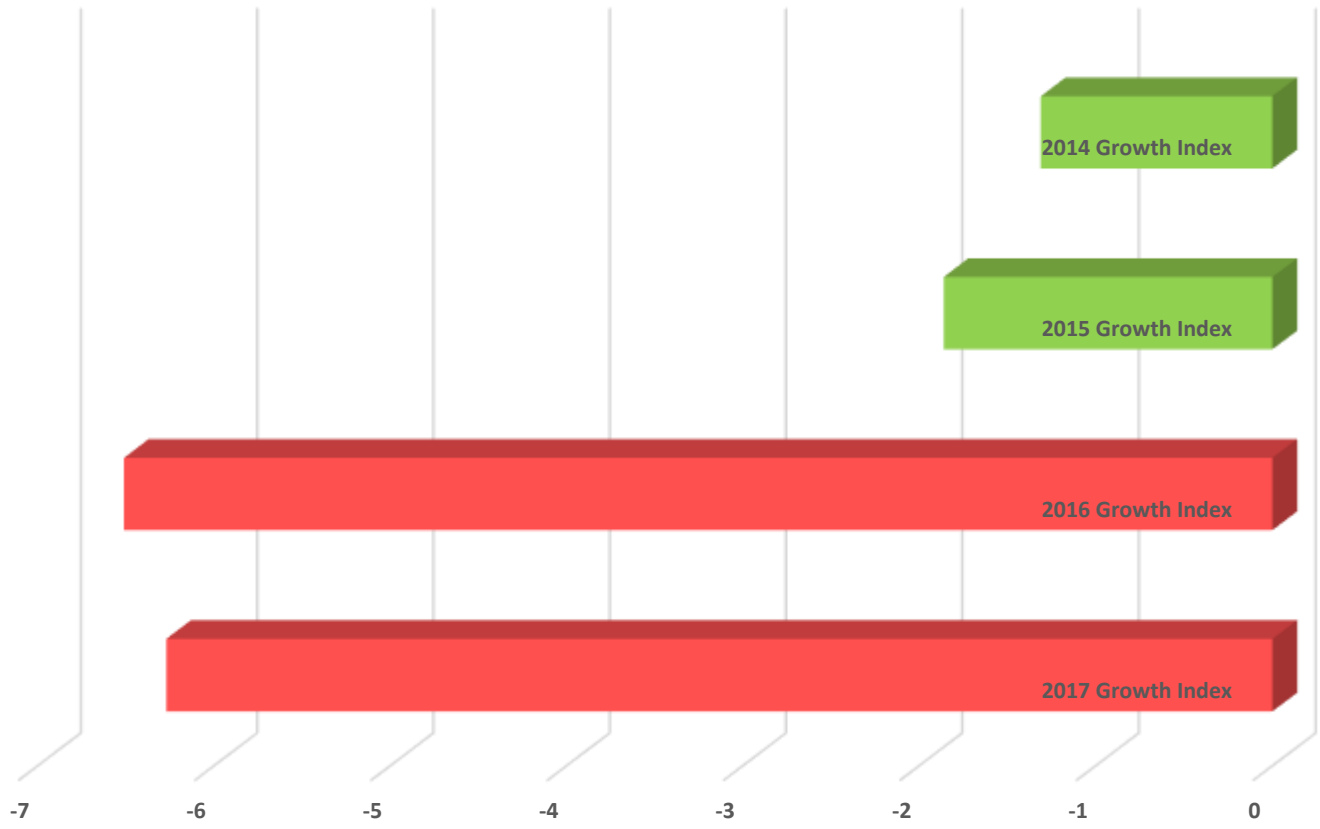
### READY Accountability Model

	CCR Denominator	CCR Percent	GLP Denominator	GLP Percent
2014	782	46.9	782	57.5
2015	798	45.4	798	56.3
2016	728	45.7	728	55.1
2017	710	45.6	710	53.9

### State and Former Federal AMO Targets

	EVASS Status	Total Targets	Targets Met	Target Percent
2014	Met Expected Growth	21	19	90.5
2015	Met Expected Growth	25	19	76.0
2016	Did Not Met Expected Growth	12	12	100.0
2017	Did Not Met Expected Growth	12	12	100.0

### Braxton Craven Middle Growth Index



	2017 Growth Index	2016 Growth Index	2015 Growth Index	2014 Growth Index
BC	-6.27	-6.51	-1.86	-1.31

### Growth Index

	School Accountability Type	Index	Level
2014	Math and Reading	-1.31	Met Expected Growth
2015	Math and Reading	-1.86	Met Expected Growth
2016	Math and Reading	-6.51	Did Not Met Expected Growth
2017	Math and Reading	-6.27	Did Not Met Expected Growth