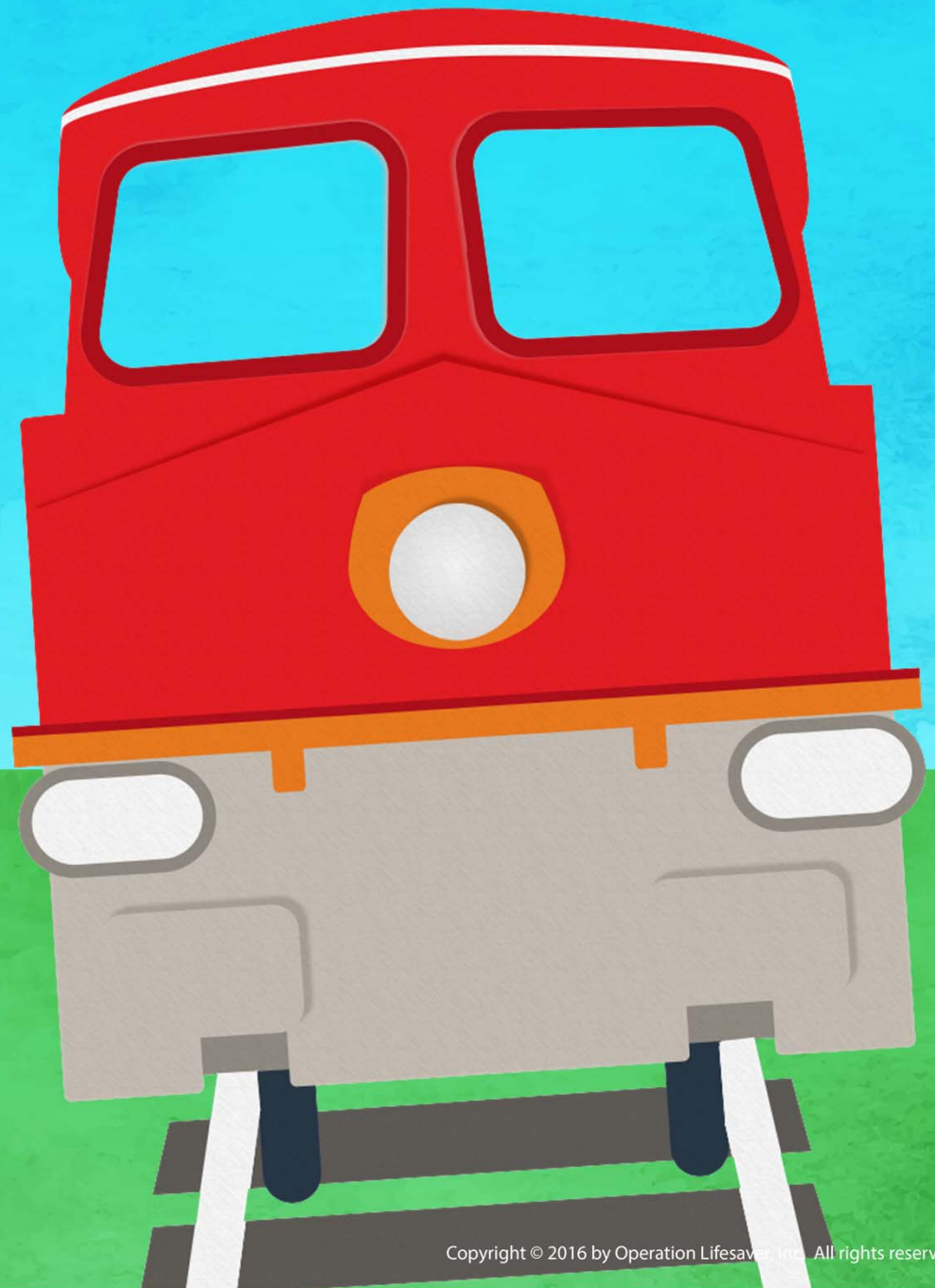


TRAINS & TRACKS



**OPERATION
LIFESAVER®**
Rail Safety Education



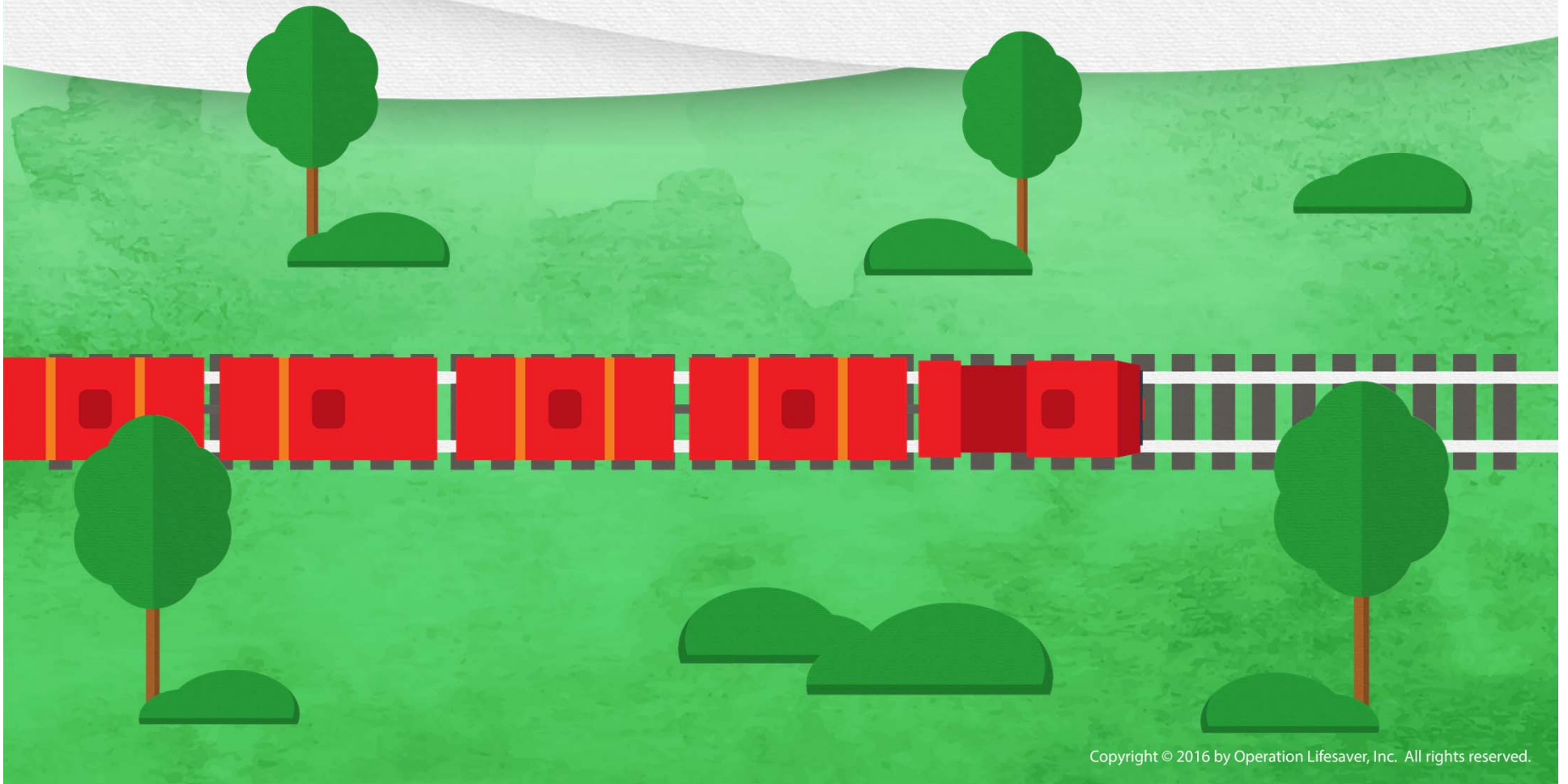
TRAIN &

the **WHATEVER IT WAS**

This is **Train** and her friend, **Track**.



Train and **Track** work together to
carry heavy things long distances.



“I **LOVE** carrying a heavy load!” says Train.

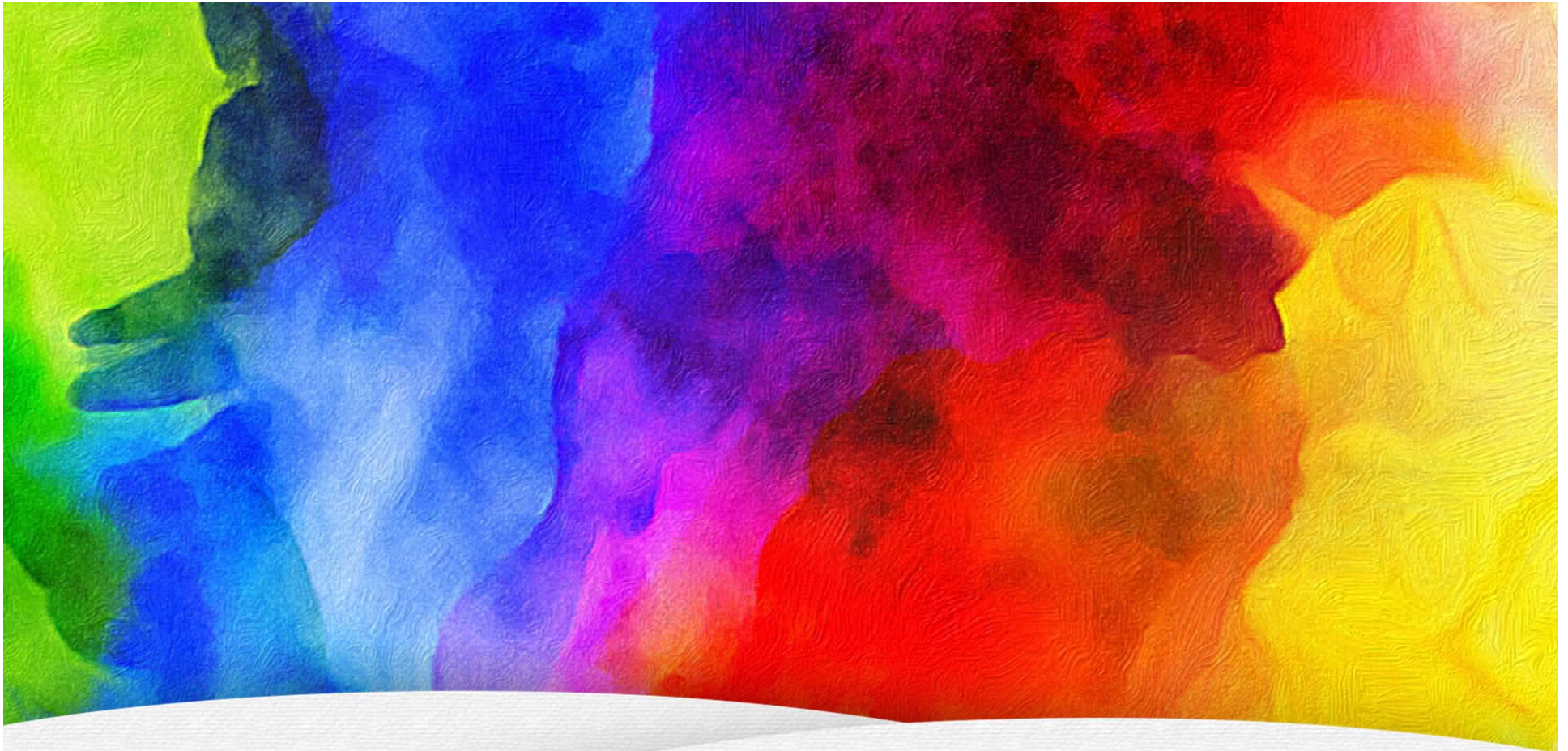


“And I **love** feeling the wind against my face when I'm moving along.”





**“And I love being
strong, big,
and heavy.”**



“But even though I'm strong and big and heavy, I can sneak up on people because **I can be very quiet.”**



**“Plus, I am a
fantastic
whisper-chant-singer.**

**When I travel,
I like to whisper
a chant that
goes like this:”**

A red toy train with three cars is on a track. The background is green with white daisies and a dark green bush. The text "TRAIN ON TRACK, CLICKETY-CLACK." is written in black and white.

**“ TRAIN ON TRACK,
CLICKETY-CLACK.**

**TRAIN ON TRACK,
CLICKETY-CLACK.”**



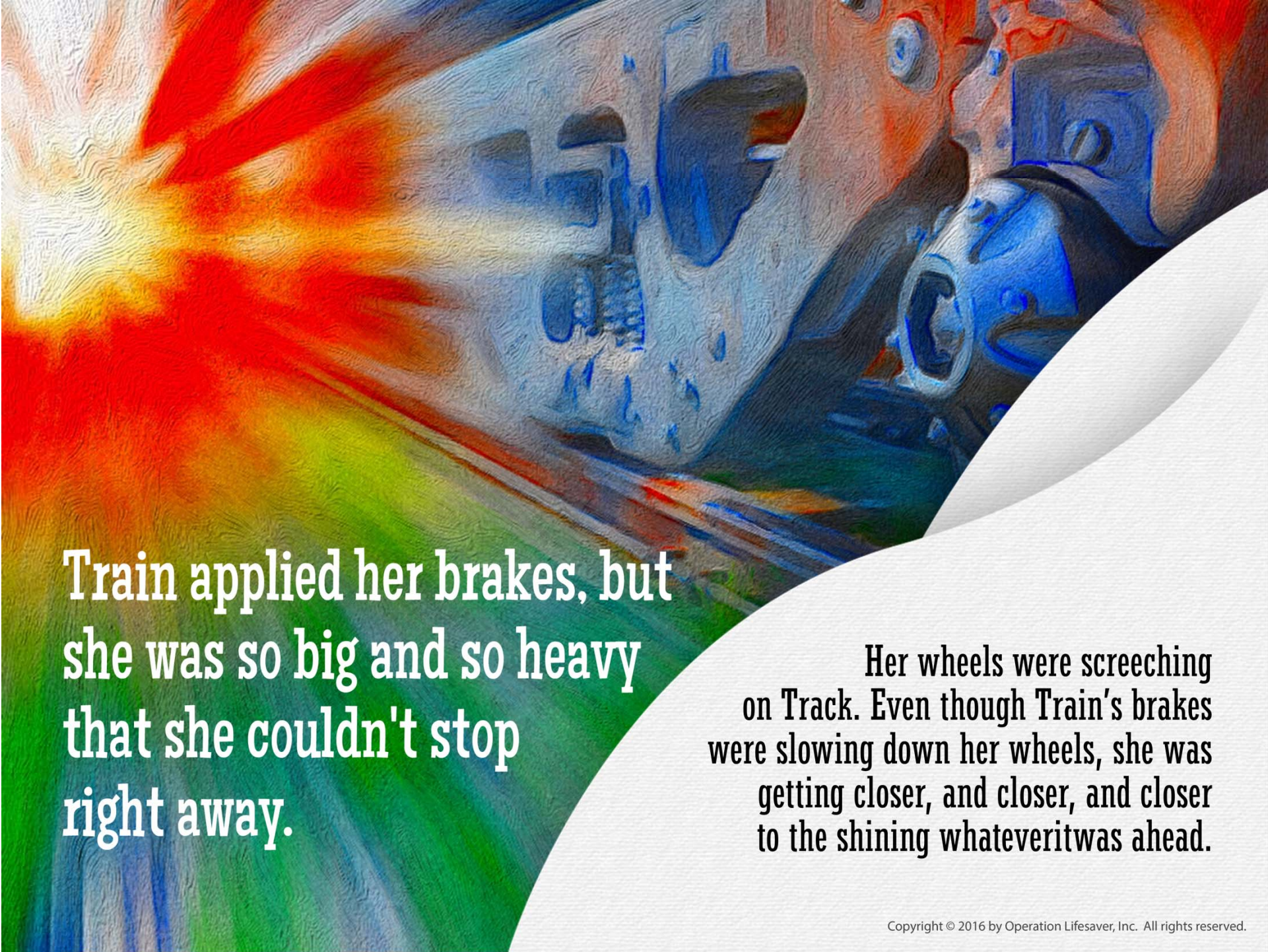
One morning, **Train** was moving quietly
along, whispering her favorite chant:

“TRAIN ON TRACK, CLICKETY-CLACK.
TRAIN ON TRACK, CLICKETY-CLACK.”

Suddenly, she noticed something shining on the tracks ahead.

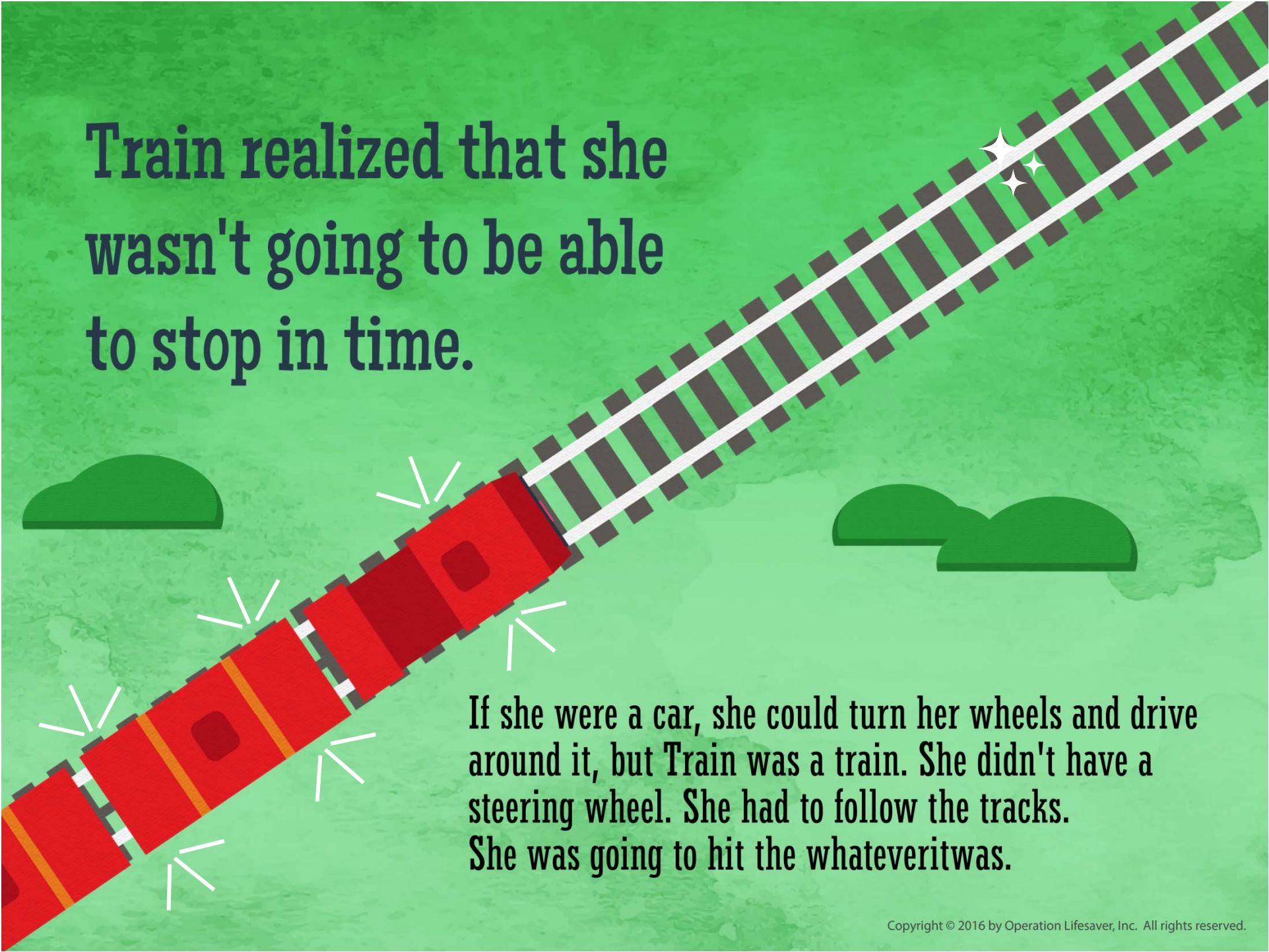
**Something made of metal. Something that did not belong there.
Train couldn't see exactly what it was, but she knew that she needed
to do everything she could to avoid hitting whatever it was.**





Train applied her brakes, but she was so big and so heavy that she couldn't stop right away.

Her wheels were screeching on Track. Even though Train's brakes were slowing down her wheels, she was getting closer, and closer, and closer to the shining whatever it was ahead.

A red train with four cars is shown on a track that curves upwards and to the right. The background is a textured green. There are two stylized green bushes on the left and two on the right. The train is moving towards the right, and there are white lines radiating from the front of the train, suggesting it is approaching something. There are also three white starburst symbols on the track ahead of the train.

**Train realized that she
wasn't going to be able
to stop in time.**

If she were a car, she could turn her wheels and drive around it, but Train was a train. She didn't have a steering wheel. She had to follow the tracks. She was going to hit the whatever it was.



And Train did.

The shiny metal whatever it was went flying off Track when Train ran into it.
It flew through the air, and landed in a patch of dandelions.

Train finally came to a stop.

"Whew!" she said. "It took me a long, long time to stop."



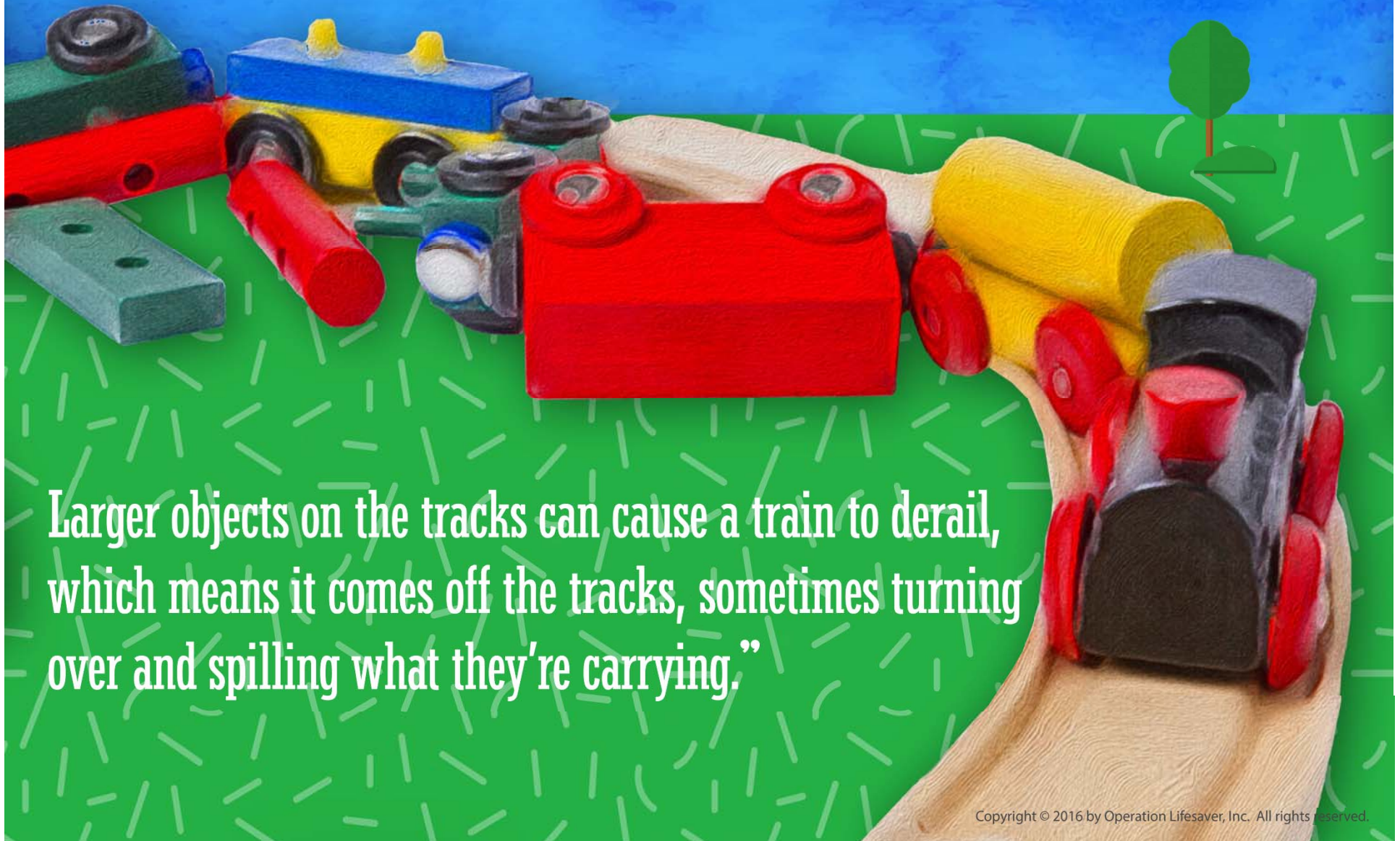
"Longer than a mile," spoke up Track.
"That's farther than 18 football fields."

**Train looked behind her at the place
the whateveritwas had landed.**


"That was lucky," she said.

**"I'm so glad there weren't any
people nearby - someone could have
been hit by that flying whateveritwas."**

“And it’s a good thing the whatever it was was so small.”



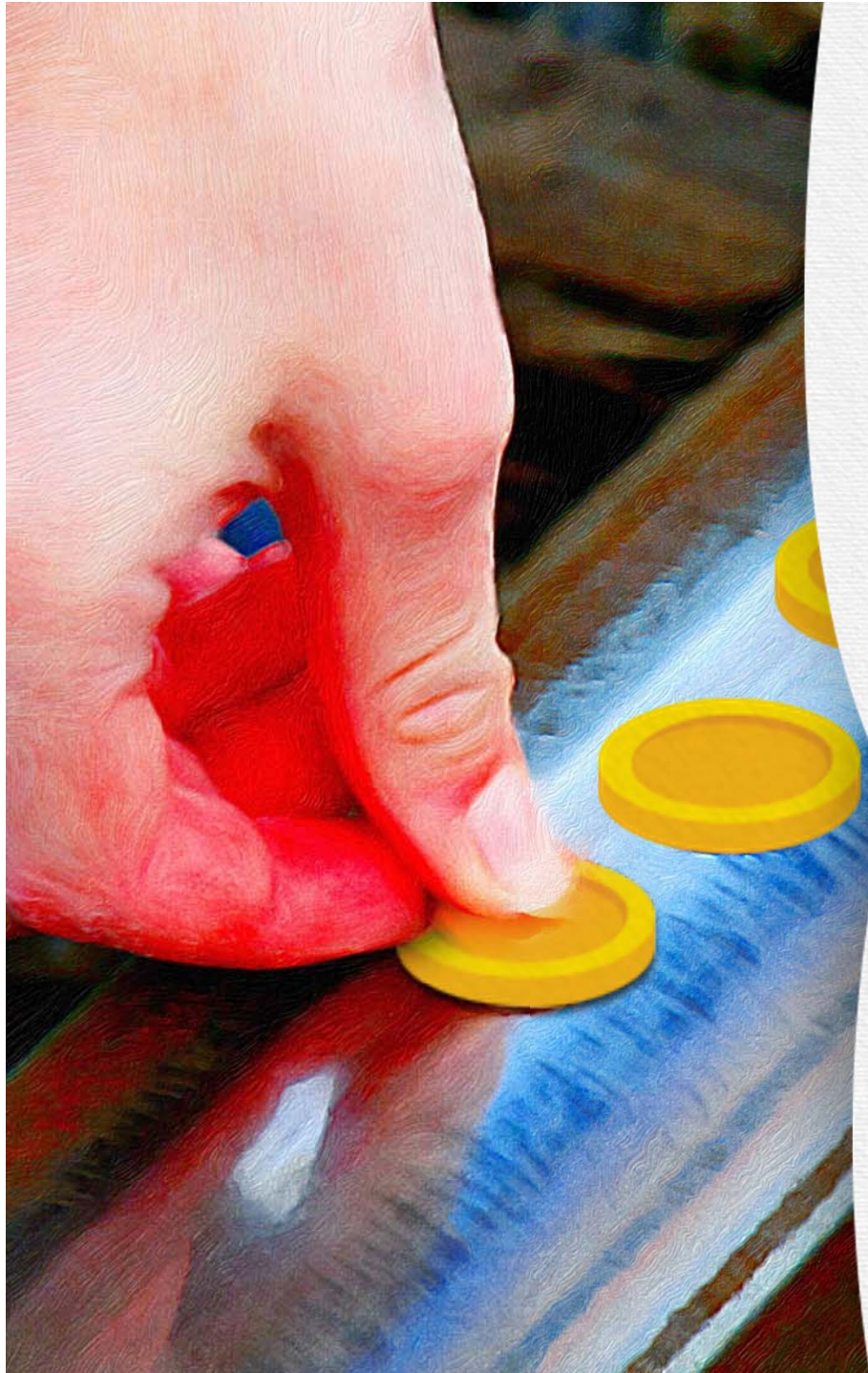
Larger objects on the tracks can cause a train to derail, which means it comes off the tracks, sometimes turning over and spilling what they’re carrying.”



**Train asked Track what that
whatever it was had been.
“I don't know, Train,” said Track.**

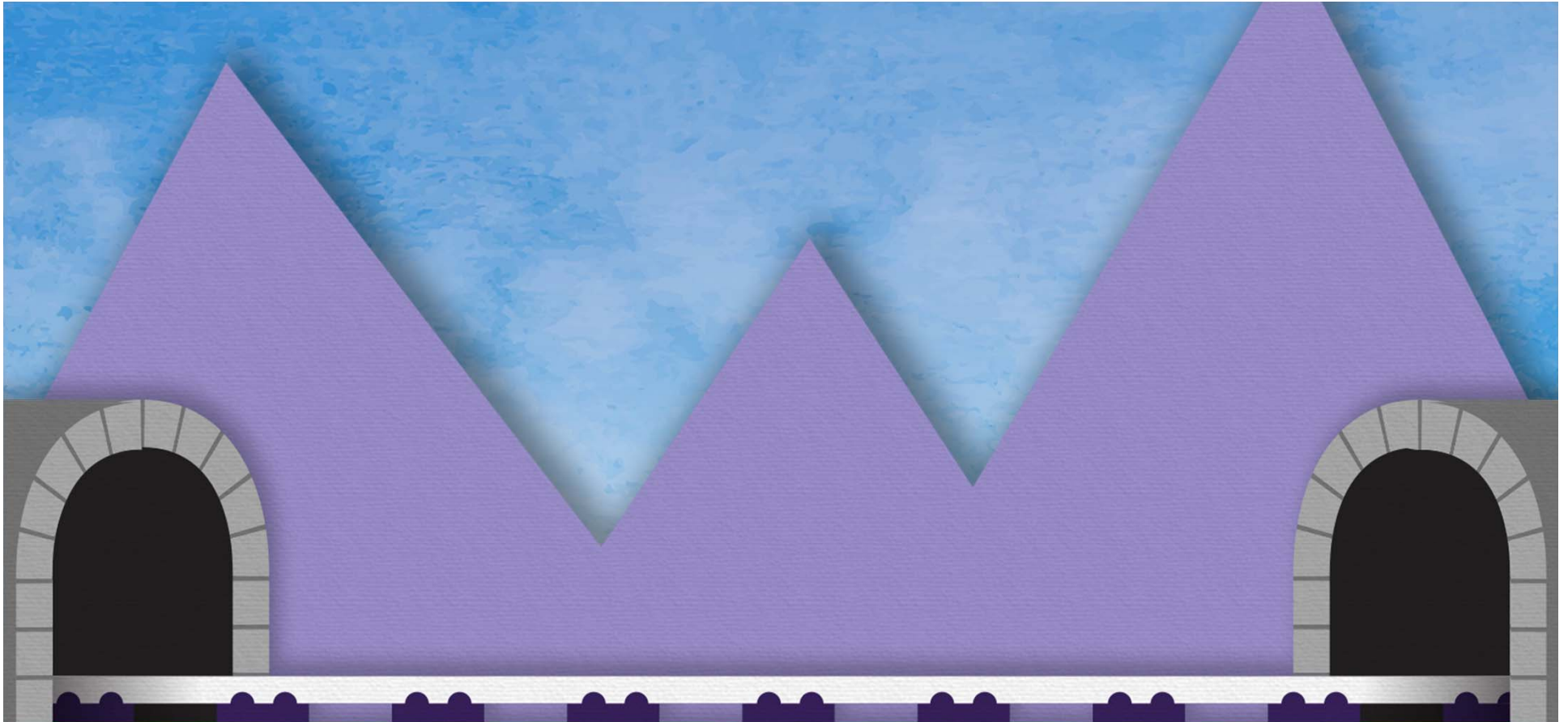
**“But it's not the first time
someone has come through
and left something on this
stretch of me.”**

**“What do you mean?”
asked Train.**



“Well,” Track said, “people will sometimes play or walk along my shiny rails. And sometimes they leave things behind.”

“Why would anyone do that?” asked Train. “Don't they know how DANGEROUS it can be? Did you see that whatever it was go flying off the tracks? It could have really hurt someone.”



““Or,” Train gulped, “what if a person had been on the tracks?”

I can’t stop quickly. **I can’t swerve.”**

“People should know how dangerous it is to be around train tracks,

even if they don’t see a train. I could come by at **any time.”**



“Plus,” added Track,
“just being close to me is
Trespassing,
and that's breaking the law.

People should always stay
far away from me,
unless they're crossing
at a marked crossing.”

"I just remembered," said Track, "someone was walking through the train yard last night. That scared me because stopped trains can move suddenly, and a person might get hurt. And you know, that person was also trespassing."

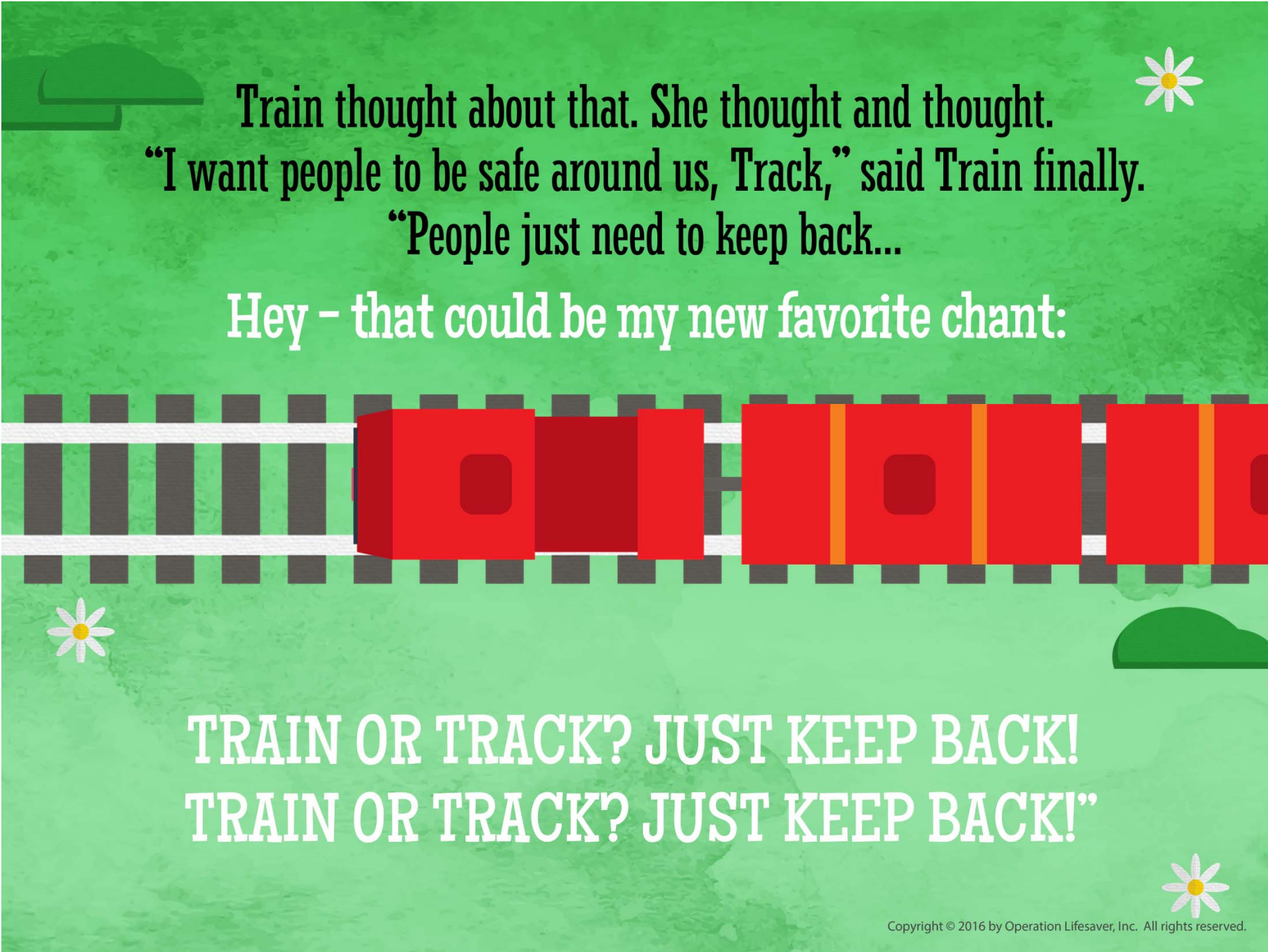
**"You're right,"
replied Train.**



“Do you know what I think, Train?” asked Track.

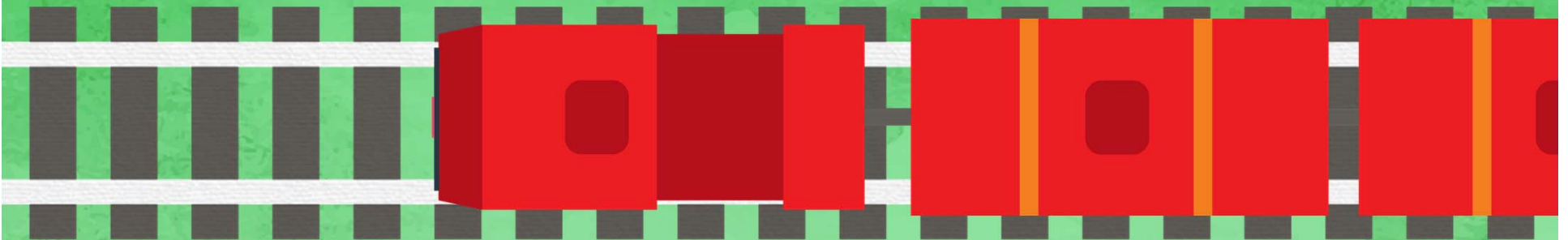
“I think some people just don’t know that you are so strong and big and heavy and quiet and take such a long time to stop, or that you can come by at any time.

I think people don’t realize they are making choices around us that are dangerous.”



Train thought about that. She thought and thought.
“I want people to be safe around us, Track,” said Train finally.
“People just need to keep back...”

Hey – that could be my new favorite chant:



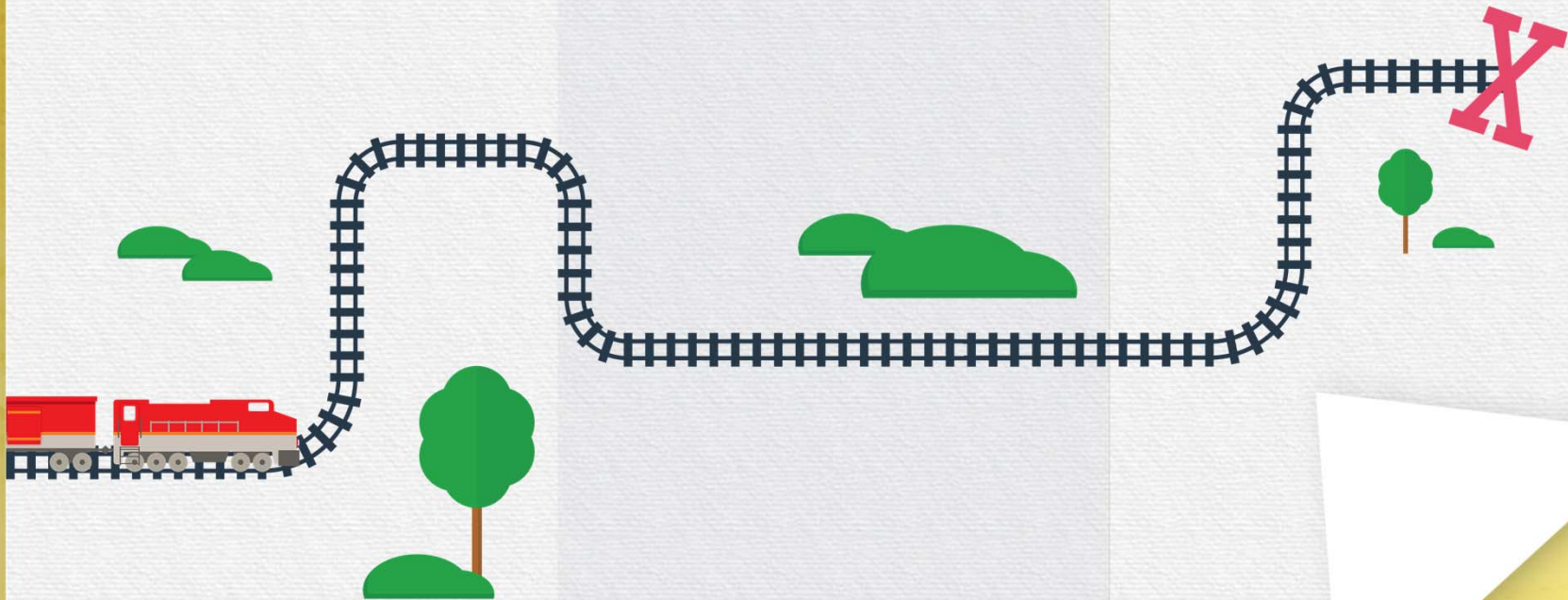
TRAIN OR TRACK? JUST KEEP BACK!
TRAIN OR TRACK? JUST KEEP BACK!”

**“That’s great, Train,”
said Track.**



**“If people would just keep back from you and me,
we would all be safe. People can admire us from a distance.”**

“Well, we still have a long trip ahead of us,” said Train.
“It’s time to get going again. Maybe you can help me
whisper my new favorite chant as I travel.”



“I would love to,” said Track.



As big, strong Train moved on quietly, carrying her heavy load, she and Track both whisper-chanted:

**“TRAIN OR TRACK? JUST KEEP BACK!
TRAIN OR TRACK? JUST KEEP BACK!”**

And they're still whispering it to this day.



The end

A stylized illustration of a red train engine on tracks. The engine has a red upper body with two large, empty window cutouts and a single white circular light in the center. Below the red body is a grey lower body with two white oval lights. The engine is on black tracks with white rails. Three white teardrop shapes are shown trailing from the bottom right of the engine, suggesting motion. The background is a textured blue.

Train is **WIDER**
than Track.

If you are too close
to the tracks when a
train comes by,
you could be hurt.

It takes Train a **long time** to stop because she is
SO BIG AND HEAVY.



“Trespassing” is going somewhere you’re not supposed to go, like walking into a stranger’s house.

**TRESPASSING
IS BREAKING
THE LAW.**

Train or track?



Just keep back!

These signs tell you that you are close to train tracks and need to be careful.



**Always cross
at marked crossings.**

**Look both ways
and listen
before crossing.**