

# ESL QUICK FACTS

## TERMS TO KNOW:

**EL:** English Learner  
**ELD:** English Language Development  
**ELP:** English Language Proficiency  
**ESL:** English as a Second Language  
**LEP:** Limited English Proficient  
**FEL:** Former English Learner  
**NOMPHLOTE:** National Origin Minority Primary Home Language Other Than English  
**SIFE/SLIFE:** Student with Limited or Interrupted Formal Education  
**ACCESS for ELLs 2.0:** Annual State Mandated Test for Language Acquisition  
**W-APT:** WIDA – ACCESS Placement Test for Kindergarten  
**WIDA Online Screener** – ACCESS Placement Test  
**WIDA:** World Class Instructional Design of Assessment  
**WIDA AMS** – WIDA Assessment Management System  
**WIDA Standards** – Standards for Language Acquisition  
**Proficiency Levels** - Levels of Language Acquisition

## ESL Codes

LEP	–	EL-2
LEP2	–	EL-2
FLEP1	–	FEL-1
FLEP2	–	FEL-2
FLEP3	–	FEL-3
FLEP4	–	FEL-4
FLEP	-	FEL

## ESL Contacts

Marengo County Central Office :  
 Kathy Pritchett - [kpritchett@marengo.k12.al.us](mailto:kpritchett@marengo.k12.al.us)  
 ALJ Tracy Mitchell - [tstacy@marengo.k12.al.us](mailto:tstacy@marengo.k12.al.us)  
 MHS Amanda Compton -  
[acompton@marengo.k12.al.us](mailto:acompton@marengo.k12.al.us)  
 SW Courtney Taylor - [ctaylor@marengo.k12.al.us](mailto:ctaylor@marengo.k12.al.us)

## Regional ESL Coaches

## Contact Information

Debbie Baeder	<a href="mailto:dbaeder@alsde.edu">dbaeder@alsde.edu</a>
Susan Penton	<a href="mailto:spenton@alsde.edu">spenton@alsde.edu</a>
Robin Stutts	<a href="mailto:rstutts@alsde.edu">rstutts@alsde.edu</a>
Krista Whatley	<a href="mailto:kwhatley@alsde.edu">kwhatley@alsde.edu</a>
Mayte Cotton	<a href="mailto:mcotton@alsde.edu">mcotton@alsde.edu</a>

## ESL RESOURCES

### EL Guidebook

<https://www.alsde.edu/sec/fp/ell/ESL%20Resources/EL%20Guidebook%202017-2018.docx.pdf>

### SAMUEL/Technical Assistance Meetings Resources

<http://www.alsde.edu/sec/fp/ell/Pages/home.aspx?navtext=English%20Language%20Learners>

### TRANSACT (documents translated into multiple languages)

[www.transact.com](http://www.transact.com)

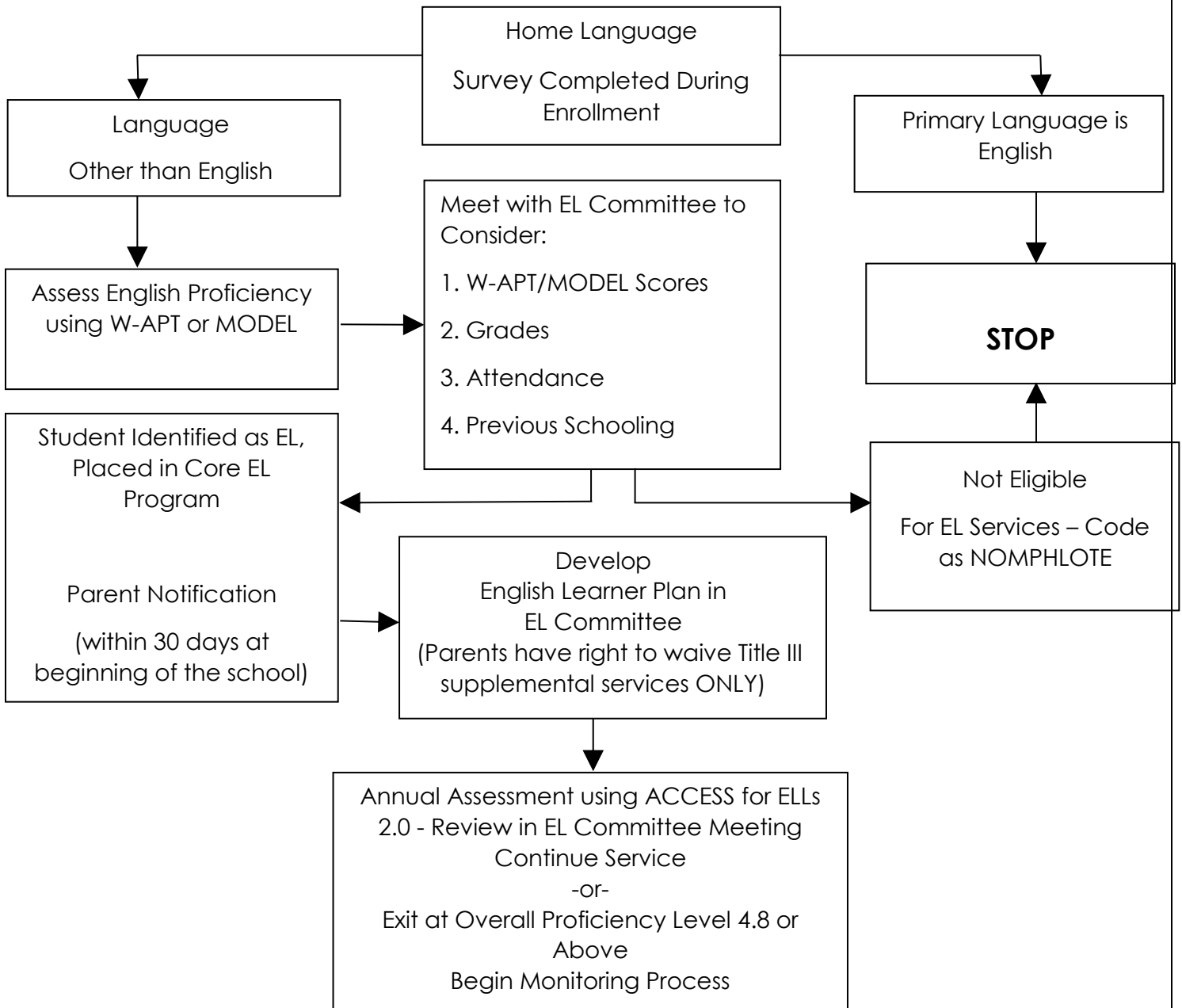
### WIDA Can Do Descriptors

[https://www.wida.us/standards/CAN\\_DOs/](https://www.wida.us/standards/CAN_DOs/)

### WIDA STANDARDS

[www.wida.us](http://www.wida.us)

# ESL Procedures Flowchart



## WIDA Standards

English language learners communicate:

1. For Social and Instructional purposes within the school setting
2. Information, ideas and concepts necessary for academic success in the content area of Language Arts
3. Information, ideas and concepts necessary for academic success in the content area of Mathematics
4. Information, ideas and concepts necessary for academic success in the content area of Science
5. Information, ideas and concepts necessary for academic success in the content area of Social Studies

