



2020-2021

Ready for Learning



The Pine Bluff School District is diligently working to ensure that our staff and students have a safe and enriching educational experience for the 2020-2021 school year. We continue to closely monitor all guidance from the Arkansas Department of Health and the Division of Elementary and Secondary Education. While there is still much uncertainty related to the COVID-19 pandemic situation, we (staff and students) are planning to return to school on **August 25th**. Changing back and forth between instructional delivery systems can be difficult for students, and is discouraged. To make a change, families will need to communicate with the building counselor and follow the procedures for changing their student's placement.

Blended Learning Environment (On-site)	Virtual Learning Environment (Online)
<p style="text-align: center;">Location</p> <ul style="list-style-type: none"> On-site assigned campus 	<p style="text-align: center;">Location</p> <ul style="list-style-type: none"> Students remain a part of their assigned campus but participate virtually
<p style="text-align: center;">Teacher</p> <ul style="list-style-type: none"> Pine Bluff School District Teachers 	<p style="text-align: center;">Teacher</p> <ul style="list-style-type: none"> Pine Bluff School District Teachers
<p style="text-align: center;">Student Expectations</p> <ul style="list-style-type: none"> Attend school daily Follow social distancing guidelines Participate in blended learning using Edgenuity Learning Management System Complete formative and summative assessments Transition to virtual learning when required by the Pine Bluff School District (PBSD), AR Department of Health (ADH), Center for Disease Control (CDC), and the AR Division of Elementary and Secondary Education (DESE). Wear a face-covering or mask covering the nose and mouth (see "How to Safely Wear and Take Off a Face-covering"). Make efforts to limit social interaction as required by ADH directives. 	<p style="text-align: center;">Student Expectations</p> <ul style="list-style-type: none"> Engage appropriately in learning Demonstrate satisfactory progress in meeting learning goals Access digital content and assignments through Edgenuity Learning Management System Complete online formative and summative assessments as required. Complete all assignments and assessments by due dates. While virtual students will have some flexibility to work at their own pace within specific parameters, they must ensure they stay on track to complete all assignments by the end of the semester.
<p style="text-align: center;">Parent Expectations</p> <ul style="list-style-type: none"> Communicate with teachers Attend an orientation Monitor student progress toward learning goals Ensure daily attendance unless student is ill or under quarantine 	<p style="text-align: center;">Parent Expectations</p> <ul style="list-style-type: none"> Communicate with teachers Attend a virtual orientation Monitor student progress toward learning goals Ensure student participation in online learning activities and assignments Create a learning space for the student and ensure the student has Wi-Fi access
<p style="text-align: center;">Curriculum</p> <ul style="list-style-type: none"> Core courses (i.e., math, science, ELA, history) Advanced Placement Courses (AP) Elective courses (foreign language, CTE, fine arts, etc.) Onsite Arkansas Athletic Association (AAA) activities 	<p style="text-align: center;">Curriculum</p> <ul style="list-style-type: none"> Core courses (i.e., math, science, ELA, history) Advanced Placement Courses (AP) Elective courses (foreign language, CTE, fine arts, etc.) Access to onsite Arkansas Athletic Association (AAA) activities



2020-2021

Ready for Learning



Blended Learning Environment (On-site)

Virtual Learning Environment (Online)

Technology Needs

- Chromebook with camera, earbuds, and microphone (available through the school district) for use in the classroom or when students are required to transition to virtual instruction
- Home Wi-Fi Internet connection or other internet option (if possible)

Technology Needs

- Chromebook with camera, earbuds, and microphone (available through the school district) for use in the classroom or when students are required to transition to virtual instruction
- Home Wi-Fi Internet connection or other internet option

Student Learning Experiences

- Students will use the Edgenuity Learning Management System (LMS) to engage in digital content designed to enhance their learning.
- Teachers will provide daily in-person instruction.
- Teachers will follow the Pine Bluff School District curriculum pacing calendars and will align the digital content accordingly.
- Teachers will check grades and monitor student progress regularly.
- Teachers will communicate with students and parents regarding progress.
- Students will transition to virtual learning as required by the Pine Bluff School District (PBSD), AR Department of Health (ADH), Center for Disease Control (CDC), and the AR Division of Elementary and Secondary Education (DESE).
- Efforts will be made to limit social interaction and mitigate health risks, including classroom arrangement and minimal transitions.

Student Learning Experiences

- Students will use the Edgenuity Learning Management System (LMS) to engage in digital content designed to enhance their learning.
- Teachers will ensure that daily instructional activities are provided for students.
- Teachers will follow the Pine Bluff School District curriculum pacing calendars and will align the digital content accordingly.
- Teachers will check grades and monitor student progress regularly.
- Teachers will communicate with students and parents regarding progress.
- Small group sessions led by the teacher via Zoom will support student learning.
- Students will be assigned a grade level teacher from their assigned campus.

Additional Student Supports

- PBSD Special Services will work with teachers and families to meet the needs of students with special needs
- Language supports will be provided to English Language Learners

Additional Student Supports

- PBSD Special Services will work with teachers and families to meet the needs of students with special needs
- Language supports will be provided to English Language Learners

Bus Transportation

- Bus transportation **IS** provided.
- Students are required to wear a face-covering or mask that covers the nose **and** mouth.
- Students will have assigned seats and will be spaced out as much as feasible.

Bus Transportation

- Bus transportation is **NOT** provided.



2020-2021

Ready For Learning



Blended Learning Environment (On-site)

Health Services

- All staff, students, and visitors will be screened upon entry to buildings.
- All staff and students (Pre K - 12th grade) will wear a face covering or mask that covers the nose **and** mouth (One time supply of 5 face coverings/masks will be provided by the district to all staff and students).
- Frequent sanitation of surfaces and buildings
- Social distancing as feasible.
- Students and staff stay home when not feeling well and/or have been exposed to COVID-19.
- Students will be placed in isolation if becoming ill and a parent/guardian will be required to pick them up immediately.
- Contact tracing for staff and students who test positive for COVID-19 will be conducted by the ADH.
- Water fountains will not be in use.
- Students should bring clear refillable water bottles that can be filled at filling stations.

Food Services

- Breakfast will be served in classrooms.
- Lunch schedules may be modified and meals may be served in classrooms.
- All menu options may be modified.
- Physical spacing, where reasonable, will be organized on each campus.

Virtual Learning Environment (Online)

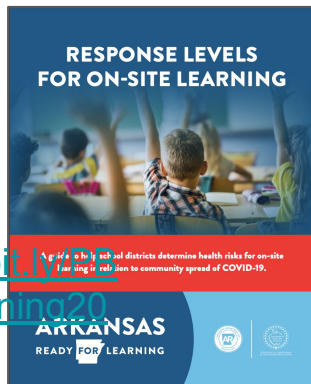
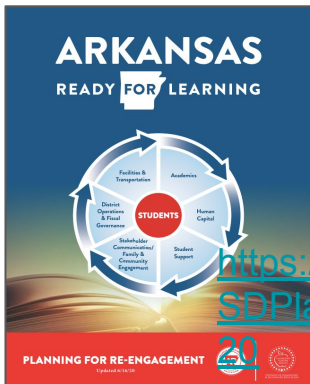
Health Services

- Virtual staff and students will be required to wear a face covering or mask covering the nose **and** mouth when on a PBSD campus for any reason.
- Virtual students and visitors will be required to social distance when on a PBSD campus for any reason.
- Contact tracing will be conducted by ADH.

Food Services

- Meals will be made available for pick-up.

Click the Icons Below for Helpful Links



<https://bit.ly/PBSDPlanning20>



**CLICK
HERE**

FAQ
Frequently Asked
QUESTIONS



Pine Bluff School District
1215 W Pullen Ave.
Pine Bluff, AR 71601
Phone: 870-543-4200