

A cartoon cowboy character is positioned on the left side of the image. He is wearing a tall, tan cowboy hat with a black band, a red bandana around his neck, a tan vest over a blue shirt with a yellow star on the chest, and blue pants with a large yellow belt buckle. He is holding a brown lasso in his right hand. The character has a friendly, smiling face with rosy cheeks.

WELCOME TO KINDERGARTEN

Billingsley School

2020-2021

KINDERGARTEN DURING A PANDEMIC

We know this is not how you envisioned your child's first year of school. However, we want you to know that your child's safety is our **FIRST** priority. We will make the **BEST** of this unusual situation. Things will change, but together we will all make this a **GREAT** year!



KINDERGARTEN DURING A PANDEMIC

- Masks must be worn.
- We will use social distancing (desks are 6 ft apart)
- K-2 will eat in the lunchroom with students 6 ft apart
- No food sharing
- Do not send food items that must be heated
- Make sure your child can open ALL lunch & snack items by themselves
- Guidelines for when to keep your child home will be in the BEAR book



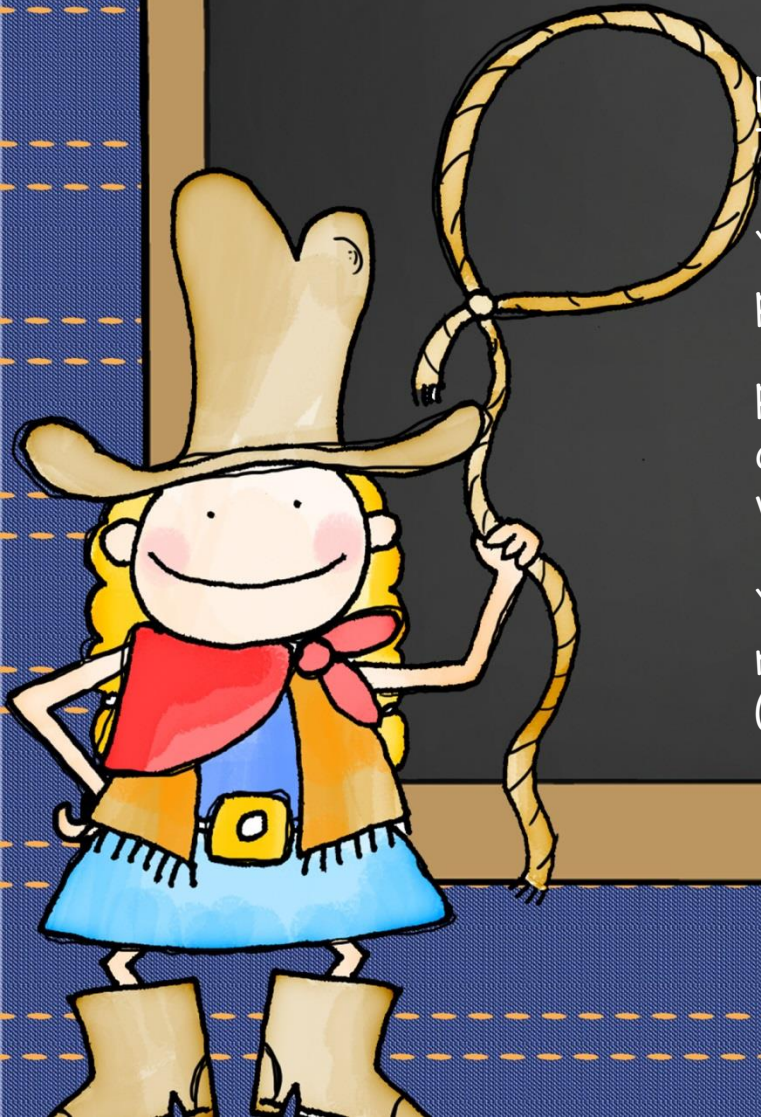
Welcome to Kindergarten

Drive Thru Open House will be from 4-6pm on Tuesday Sept. 1 in the back parking lot.

You will drive up to the Kindergarten Table and pick up your child's tote bag and BEAR book.

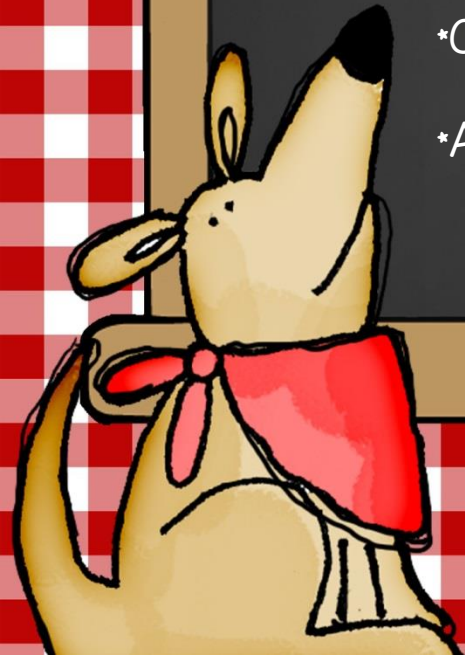
Parents will need to look through the BEAR book and read EVERYTHING, most of your questions will be answered in the paperwork you pick up.

You may also drop off information cards and money.
(Information cards will be mailed out on Aug.27)



ARRIVAL

- *Do not drop off before 7:30
- *Car Riders will be dropped off at the back doors.
- *Bus Riders will be dropped off at the front doors
- *Children will go directly to their homeroom.
- *Class begins at 7:45!
- *Arrival after 7:45 will be marked as tardy.



DISMISSAL

- *Begin dismissing at 2:30 on the first week
- *Bus riders will load buses in front and will be escorted by a teacher
- *Car riders will be dismissed from the elementary gym
- *Car rider parents will line up in the back & pull forward as necessary.

Students will only be released when your car moves to the front of the line.

- *Car Riders will be given a number to hang in your car. This MUST be visible, and students will only be released if you have your CR number.
- *If your child rides home with an older sibling, the sibling must drive through the car rider line to pick up.



DISMISSAL

- K students will be released 1st, if you have an older child, you may be asked to circle to the end of the line if their class has not been dismissed to the gym in order to keep the car rider line moving



THE FIRST DAY

- *You may not walk your child to their class.
 - *We need to know how your child will go home each day.
 - *Most students experience a little (sometimes a LOT) of separation anxiety.
 - *Give a kiss, hug, let them know you will see them after school and say good-bye
 - *Harder on parents, than the kids!!!!
 - *Older siblings, cousins, etc. will not be allowed to walk them to class.
- Teachers will be available to help children to their classes.



K-3 DISCIPLINE PLAN

*Used by all K-3 teachers

*Emphasizes positive behavior

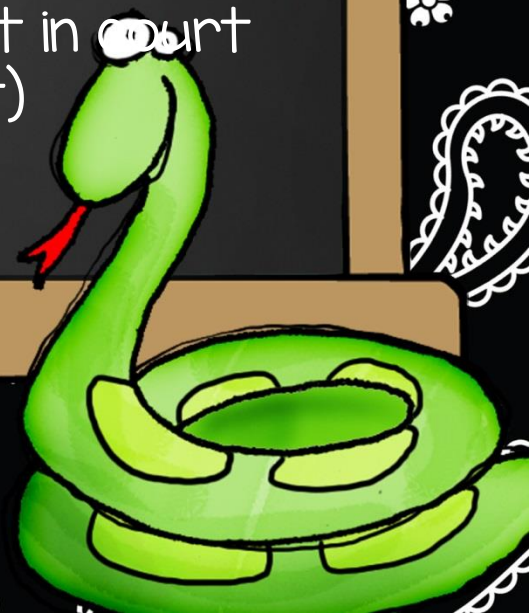
*Clip Chart & Dojo Points

*Check Behavior Calendar & Initial EVERY DAY!!



ATTENDANCE!

- Absence Notes in BEAR book
- Only 10 parent excused absences!
- Doctor's note or Court note after 10 or absence is UNEXCUSED
- K does not send home "make-up" work
- Try to make appointments after school or during holidays
- Too many unexcused absences will result in court referral (state law / required to report)



OTHER IMPORTANT INFORMATION

- *Put all money (in an envelope) & notes (including absence notes) in the zipper pouch of BEAR Book
- *SNACK—purchase from school or bring from home
- *NO CARBONATED DRINKS or GLASS CONTAINERS
- *LUNCH—Must pay full price until lunch form is approved
- *Please call the school if you have any questions 205-755-1629

