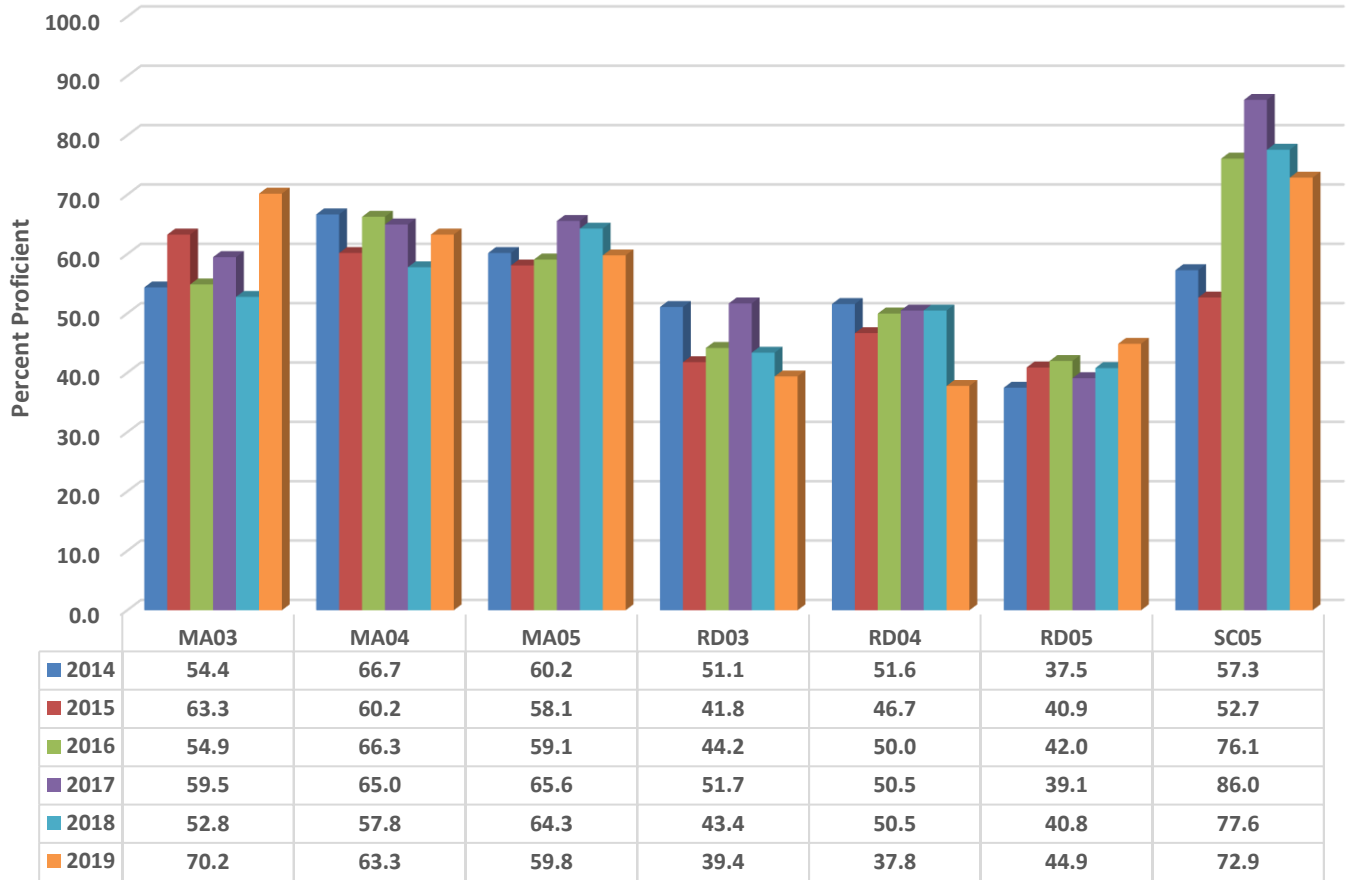


Southmont Elementary Six Year Comparison Using GLP



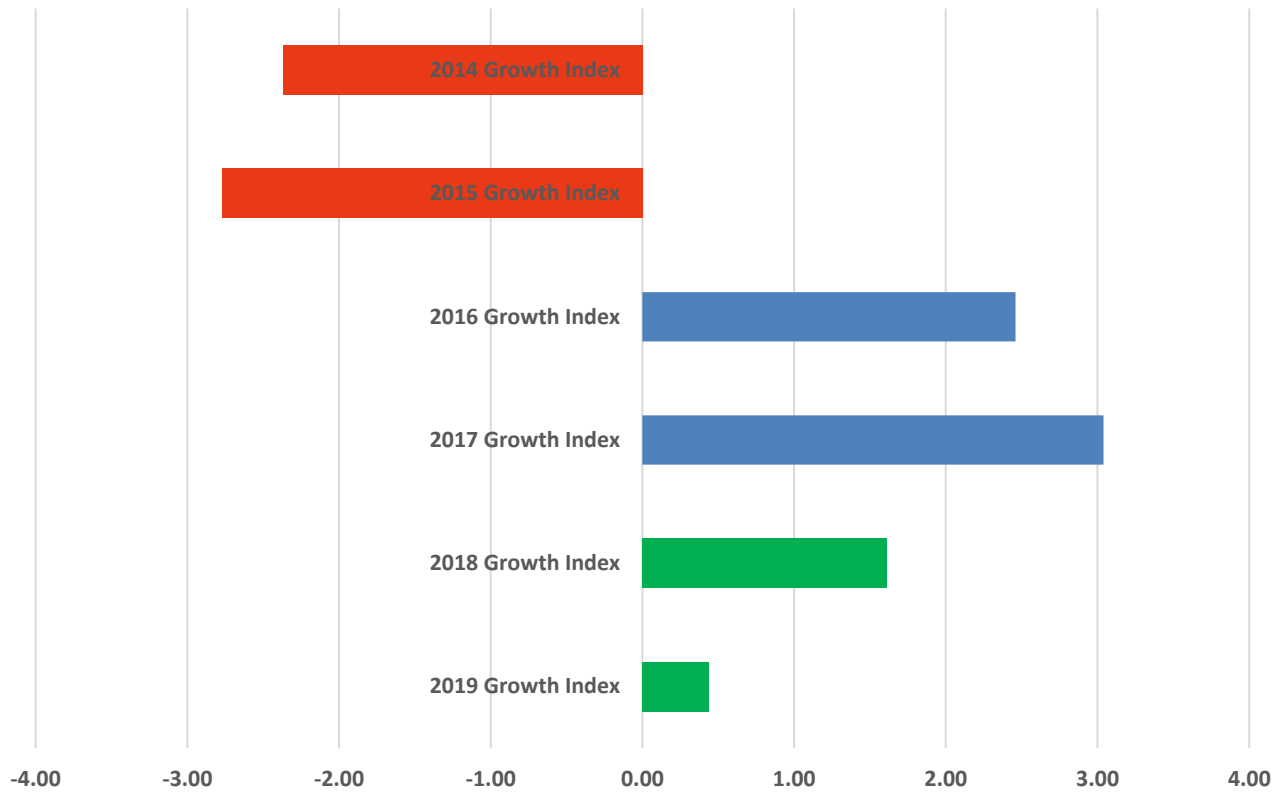
READY Accountability Model

	CCR Denominator	CCR Percent	GLP Denominator	GLP Percent
2014	676	43.9	676	54.0
2015	660	41.8	660	52.0
2016	686	47.1	686	55.7
2017	716	47.1	716	59.4
2018	724	44.6	724	55.1
2019	725	39.7	725	55.6

Growth and Participation Targets

	Growth Status	Total Targets	Targets Met	Target Percent
2014	Did Not Met Expected Growth	29	23	79.3
2015	Did Not Met Expected Growth	27	18	66.7
2016	Exceeded Expected Growth	16	16	100.0
2017	Exceeded Expected Growth	18	18	100.0
2018	Met Expected Growth	16	16	100.0
2019	Met Expected Growth	16	16	100.0

Southmont Elementary Six Year Growth Index



	2019 Growth Index	2018 Growth Index	2017 Growth Index	2016 Growth Index	2015 Growth Index	2014 Growth Index
■ Southmont	0.44	1.61	3.04	2.46	-2.77	-2.37

Growth Index

	School Accountability Type	Index	Level
2014	Math, Reading, and Science	-2.37	Did Not Met Expected Growth
2015	Math, Reading, and Science	-2.77	Did Not Met Expected Growth
2016	Math, Reading, and Science	2.46	Exceeded Expected Growth
2017	Math, Reading, and Science	3.04	Exceeded Expected Growth
2018	Math, Reading, and Science	1.61	Met Expected Growth
2019	Math, Reading, and Science	0.44	Met Expected Growth