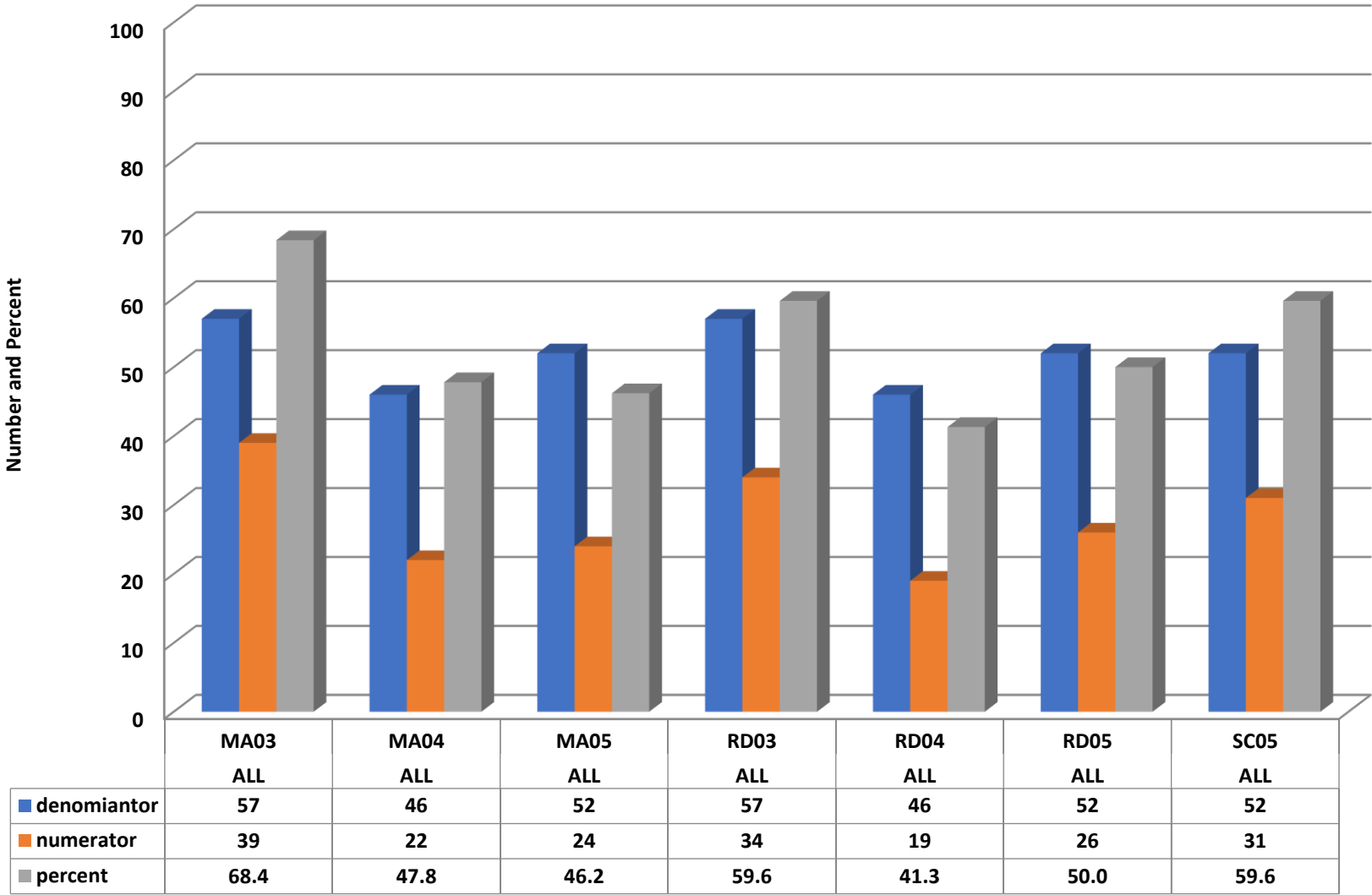
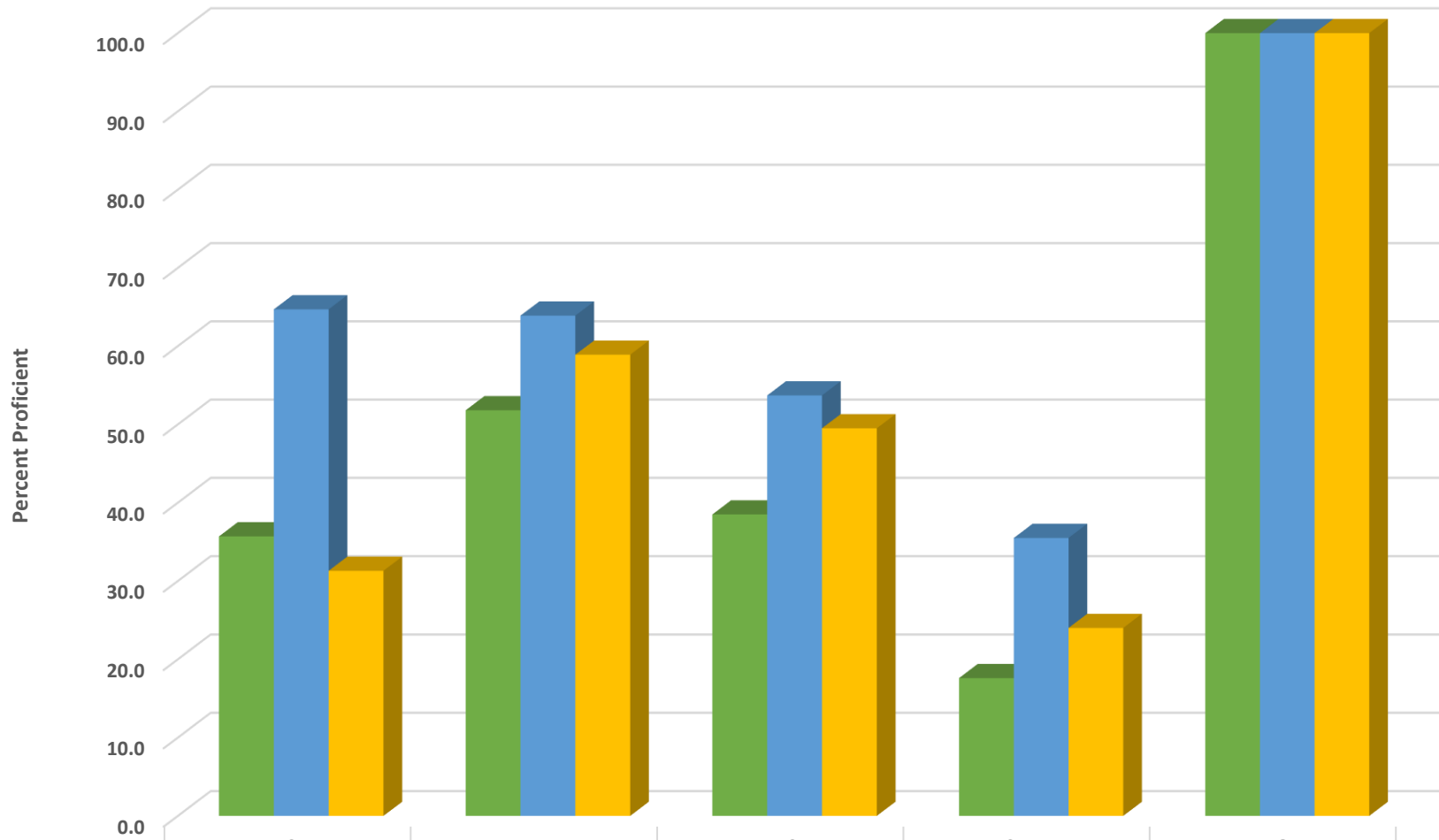


Farmer Elementary School 2018-2019 Math, Reading, and Science GLP

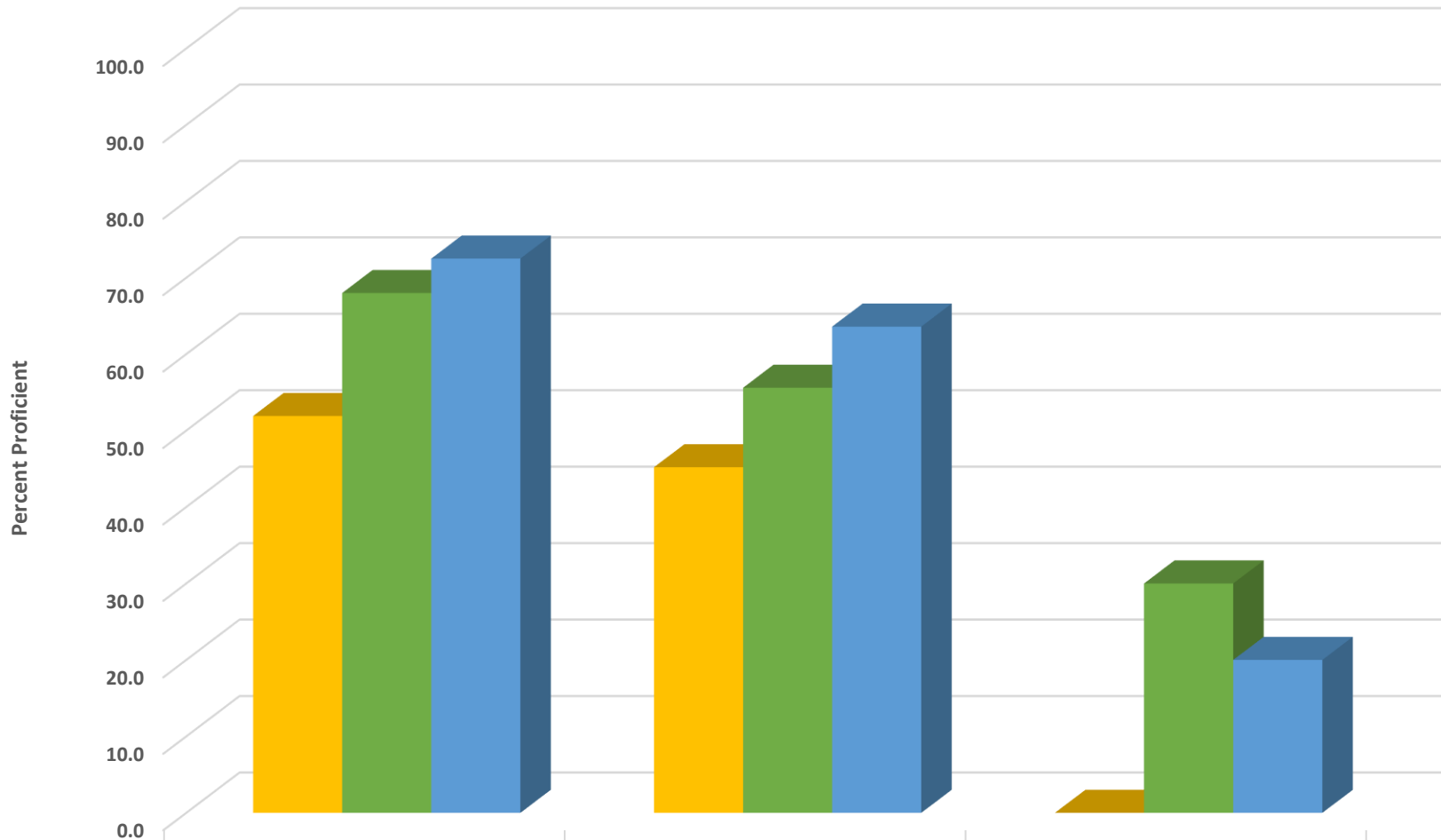


Farmer Elementary Grades 3-5 Math Percent Proficient by Subgroups



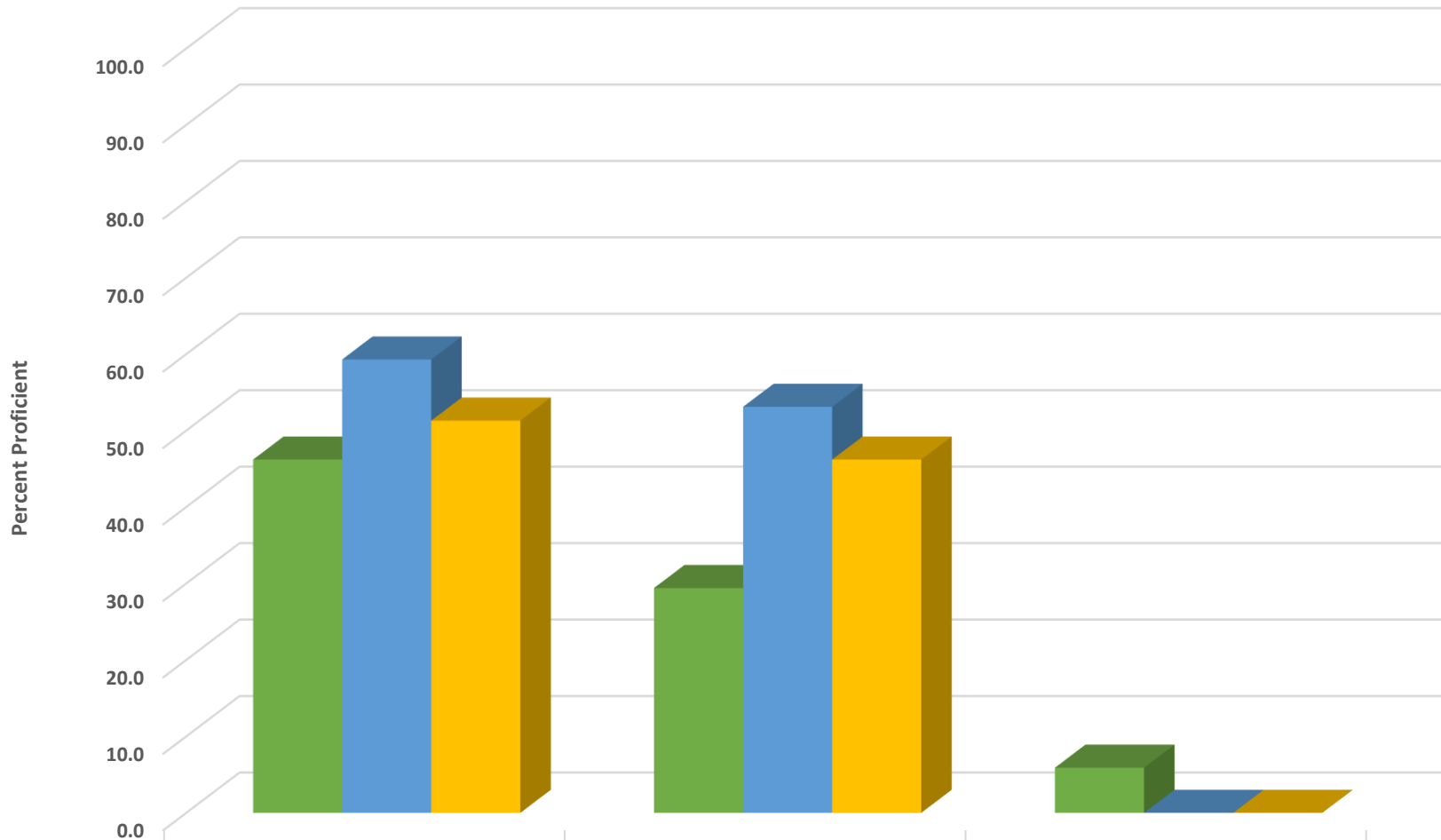
	HISP	WHITE	EDS	SWD	AIG
2017 prof pct	35.7	51.8	38.5	17.6	100.0
2018 prof pct	64.7	63.9	53.7	35.5	100.0
2019 prof pct	31.3	58.9	49.5	24.0	100.0

Farmer Elementary Grade 3 Math Percent Proficient by Subgroups



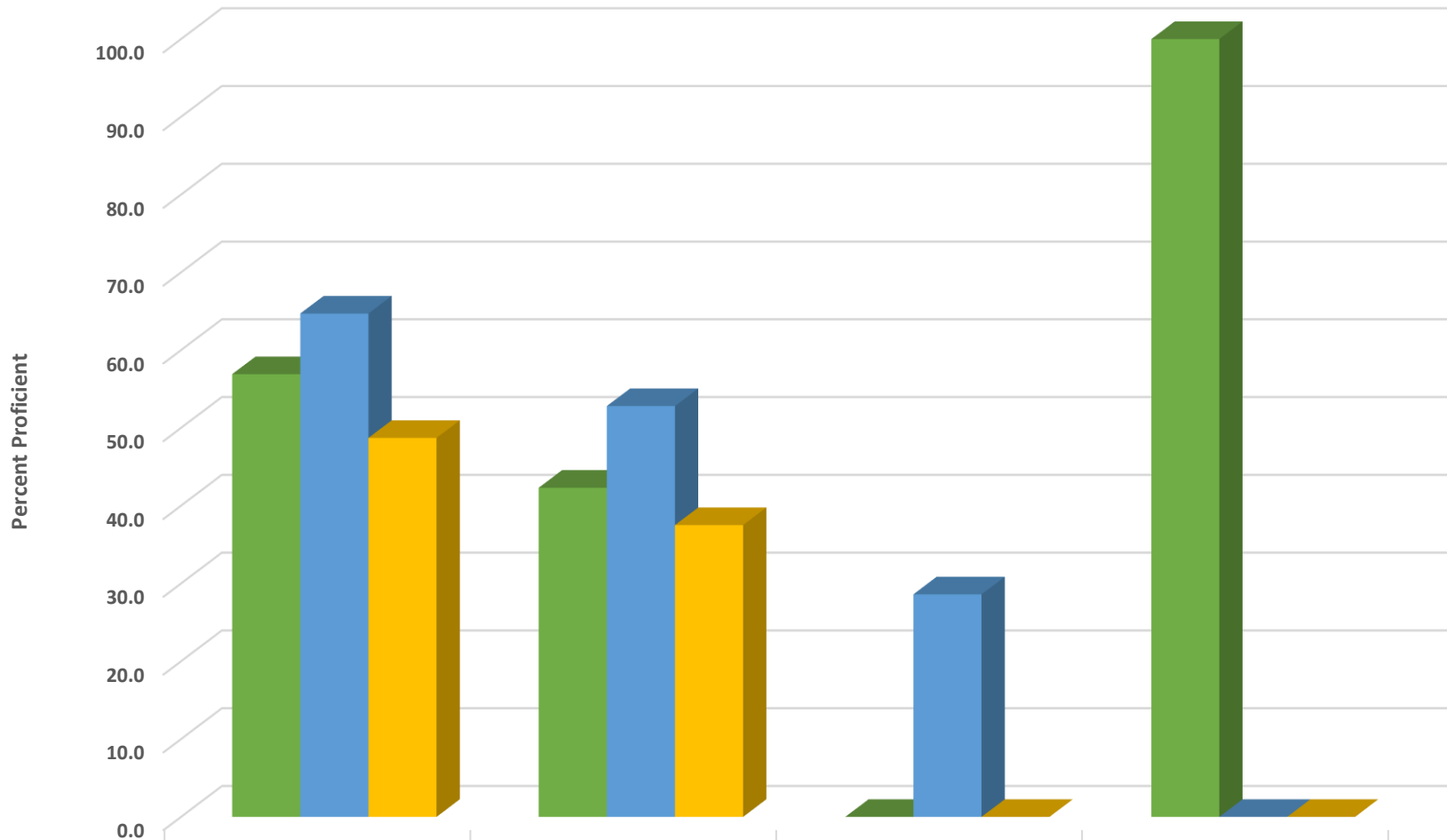
	WHITE	EDS	SWD
2017 prof pct	51.9	45.2	0.0
2018 prof pct	68.0	55.6	30.0
2019 prof pct	72.5	63.6	20.0

Farmer Elementary Grade 4 Math Percent Proficient by Subgroups



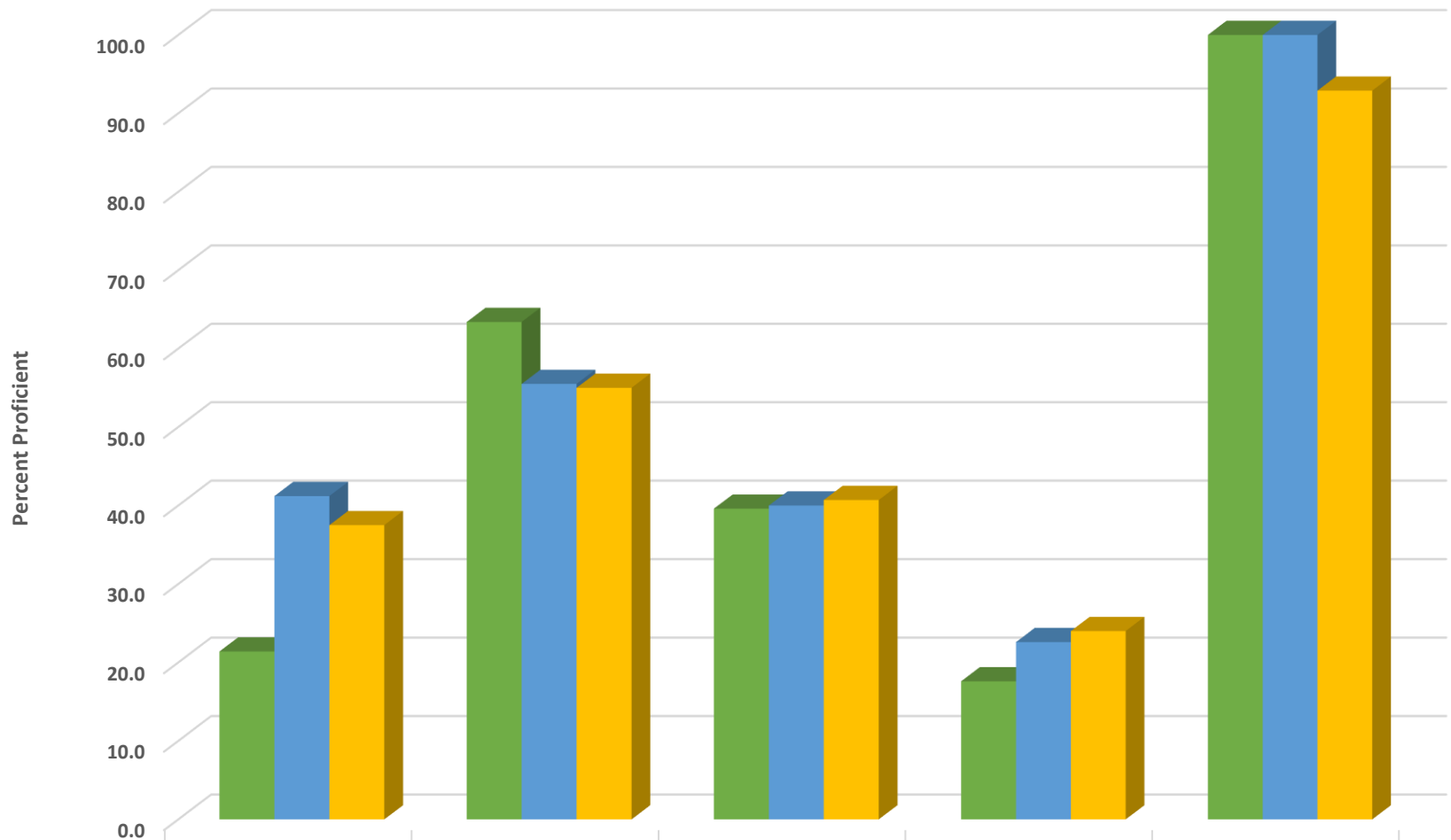
■ 2017 prof pct	46.2	29.4	5.9
■ 2018 prof pct	59.3	53.1	0.0
■ 2019 prof pct	51.3	46.2	0.0

Farmer Elementary Grade 5 Math Percent Proficient by Subgroups



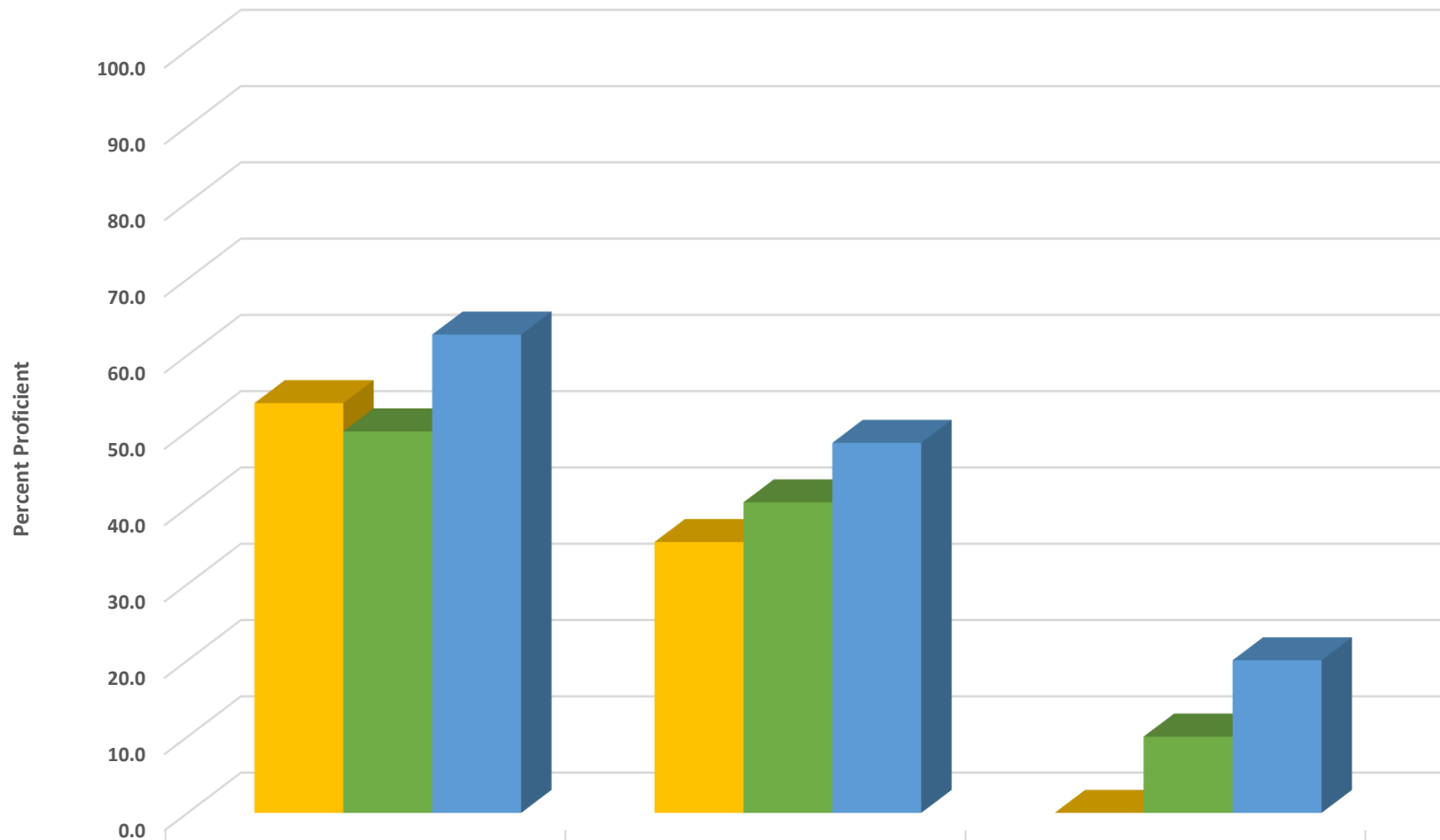
	WHITE	EDS	SWD	AIG
2017 prof pct	56.9	42.3	0.0	100.0
2018 prof pct	64.7	52.8	28.6	0.0
2019 prof pct	48.7	37.5	0.0	0.0

Farmer Elementary Grades 3-5 ELA/Reading Percent Proficient by Subgroups



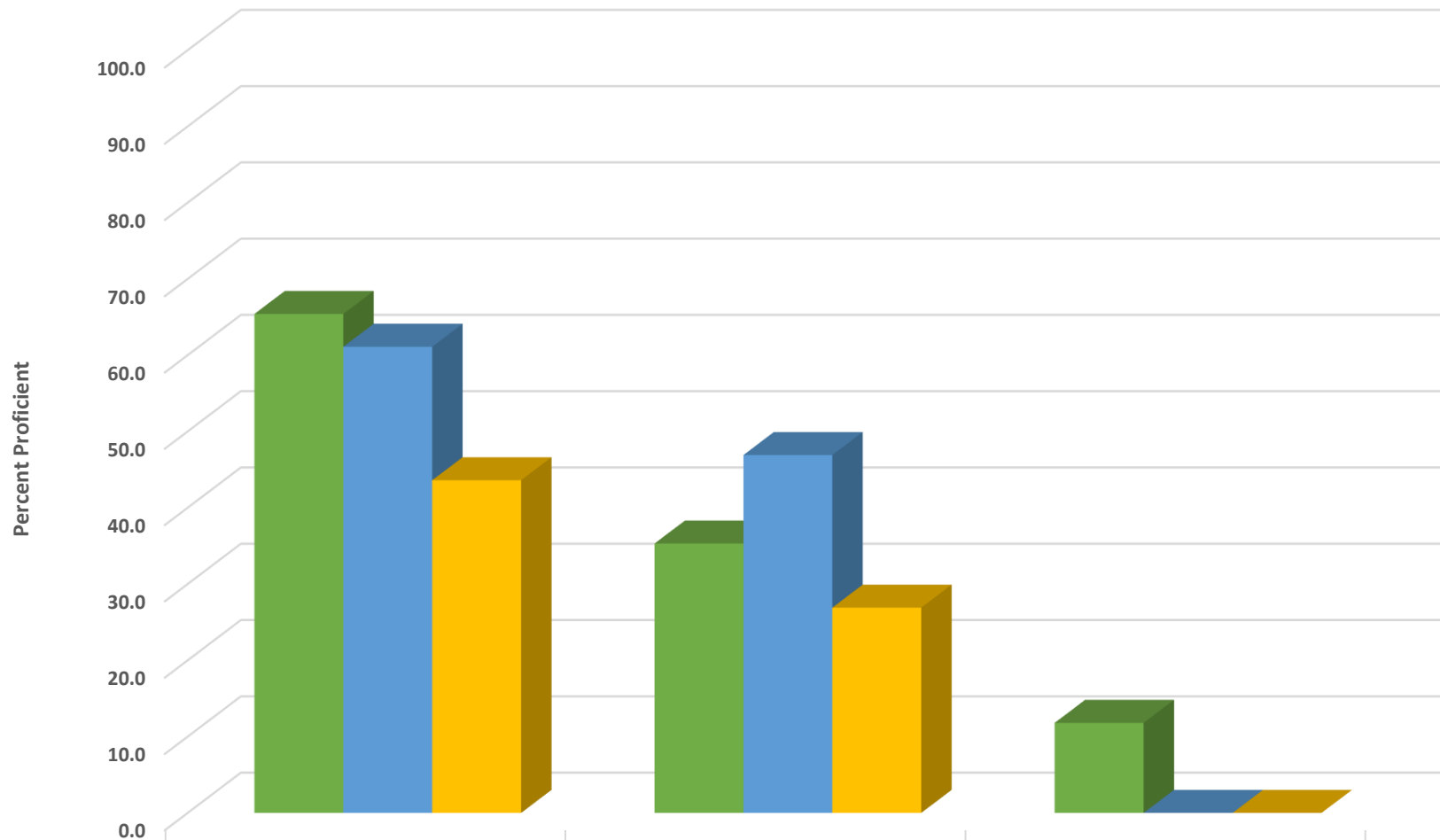
■	2017 prof pct	21.4	63.4	39.6	17.6	100.0
■	2018 prof pct	41.2	55.5	40.0	22.6	100.0
■	2019 prof pct	37.5	55.0	40.7	24.0	92.9

Farmer Elementary Grade 3 ELA/Reading Percent Proficient by Subgroups



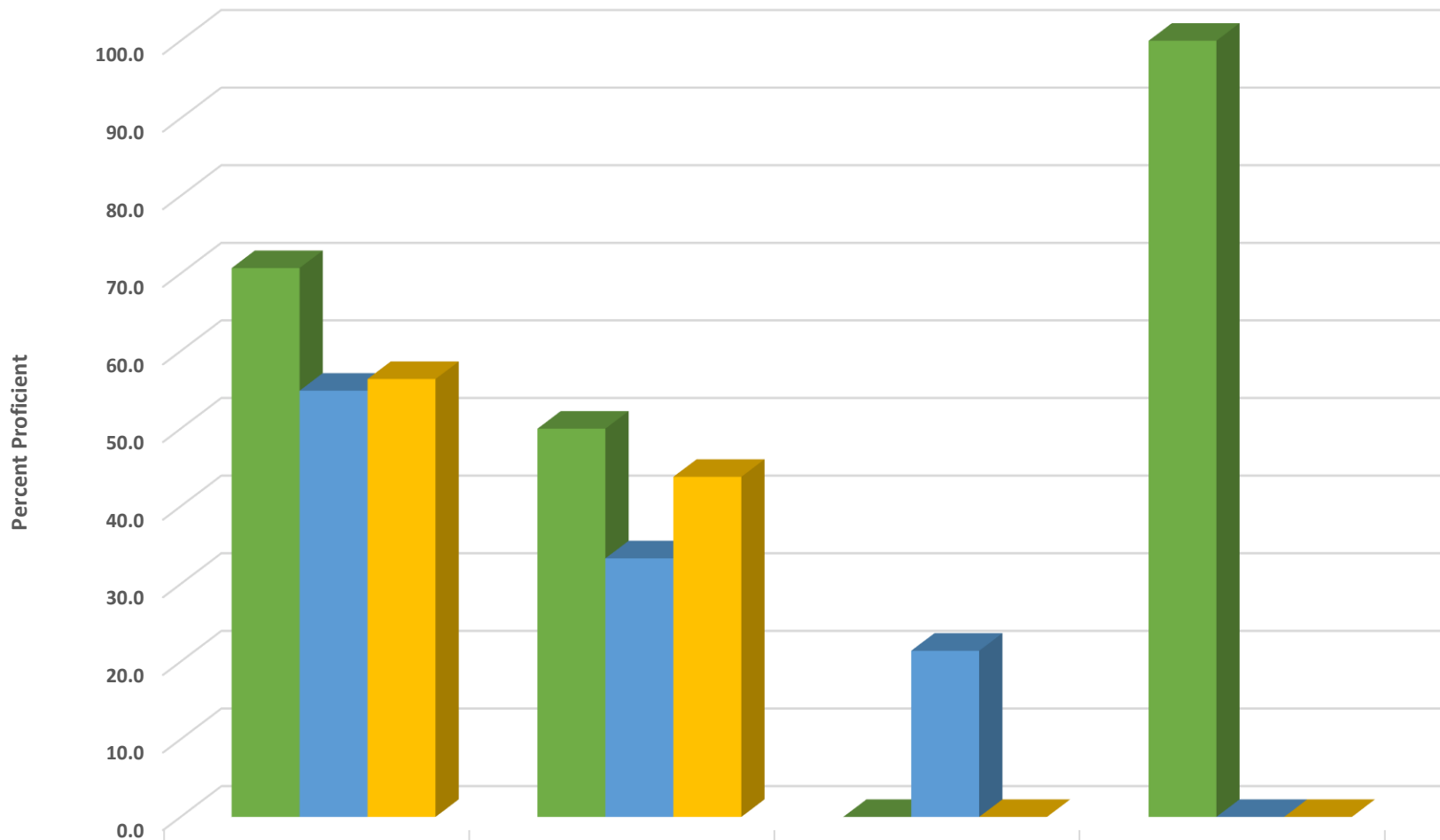
	WHITE	EDS	SWD
2017 prof pct	53.7	35.5	0.0
2018 prof pct	50.0	40.7	10.0
2019 prof pct	62.7	48.5	20.0

Farmer Elementary Grade 4 ELA/Reading Percent Proficient by Subgroups



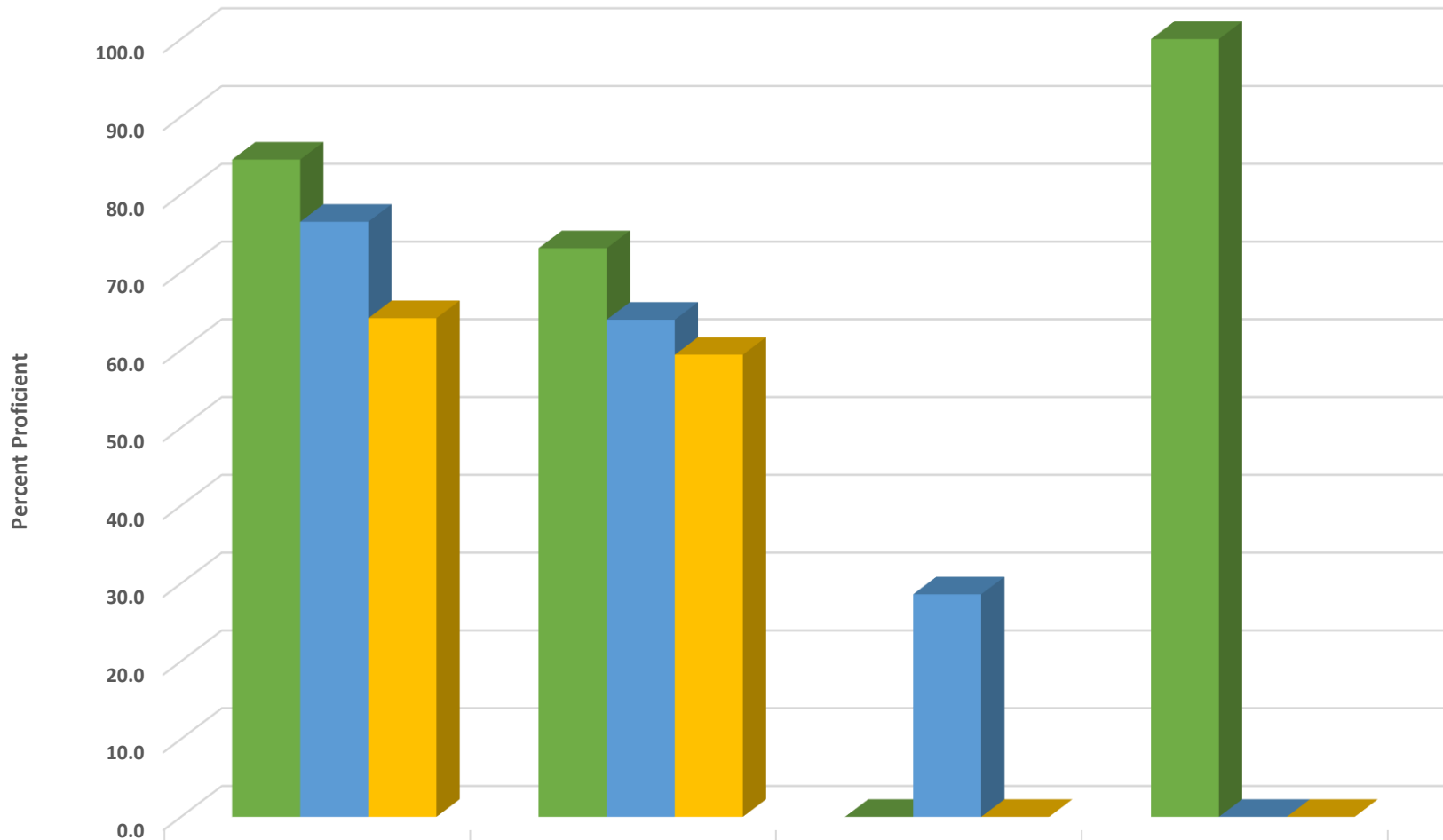
	WHTe	EDS	SWD
■ 2017 prof pct	65.4	35.3	11.8
■ 2018 prof pct	61.1	46.9	0.0
■ 2019 prof pct	43.6	26.9	0.0

Farmer Elementary Grade 5 ELA/Reading Percent Proficient by Subgroups



■	2017 prof pct	70.7	50.0	0.0	100.0
■	2018 prof pct	54.9	33.3	21.4	0.0
■	2019 prof pct	56.4	43.8	0.0	0.0

Farmer Elementary Grade 5 Science Percent Proficient by Subgroups



	WHITE	EDS	SWD	AIG
2017 prof pct	84.5	73.1	0.0	100.0
2018 prof pct	76.5	63.9	28.6	0.0
2019 prof pct	64.1	59.4	0.0	0.0