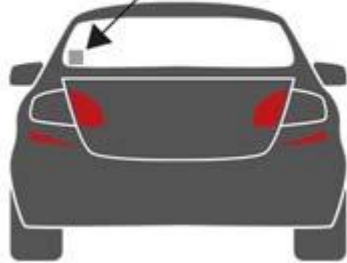


Proper Permit Placement



Houston County High School

Student Parking Rules

2020-2021



Your parking permit (sticker) must always be displayed on your lower left side of the rear window.

Back Parking Lot – This lot is located behind the two story building on the south side of campus. Access to this lot is Jerry Barker Blvd. It is reserved for students who have schedules on campus for a full school day.

Side Parking Lot-This lot is located on the western side of our campus. Access to this lot is off Bear County Blvd. It is reserved for students who dual enrollment classes but will be on campus to finish the school day.

Front Parking Lot-This lot is located in the front of the school in front of the gymnasium. It is reserved for students in work-based learning and dual-enrolled students who will be off campus at the end of the day.

All vehicles must be off campus no later than 2:20pm.

_____ (Student)
<i>Purchased parking permit # _____ lot _____</i>
<i>On (date) _____ at a cost of \$50.00</i>

In order to receive a parking permit, students must present a valid Georgia driver's license OR eligibility to receive a valid Georgia driver's license, up-to-date insurance and registration.

If another vehicle is parked in your assigned parking spot you are to park in the last numbered spot of your parking lot. While it is inconvenient for you, parking in the last number spot will help eliminate further problems for the day. You are to report to the main office that another vehicle has taken your assigned location.

The Houston County Board of Education is not responsible for losses of or damages, including bodily injury, to the property of users of its facilities.

The school administration reserves the right to suspend or revoke parking privileges without a refund for the cost of a permit.

While on campus, your vehicle is subject to searches at any time.

On school days, student vehicles are not allowed to park closer than the Side Parking Lot, including areas near the baseball field, bus ramp, greenhouse, or the rear of the gym until after 3:15 PM. After this time, only students participating in extracurricular activities should be parked in these areas.

Within your designated parking spot you are to park on the paved surface between two yellow or white lines.

Parking permits cost \$50 first semester and \$25 second semester. All replacement parking permits cost \$10.

Students parking in the back lot must take a right onto Jerry Barker Blvd. when leaving in the afternoons. They will then be directed to take a left onto Bear Country Blvd.

Students parking on the side lot must take a right onto Bear Country Blvd. when leaving campus in the afternoon.

Report all accidents to the front office immediately.

When you arrive at the school, park your vehicle and remain in YOUR car until 7:45. No student drivers are permitted inside the building until after 7:45am. When you have been dismissed for the day, you must leave the parking lot immediately. All students must be off campus prior to 2:20pm unless in a supervised after school activity. There is to be NO gathering in the parking lots before or after school.

Students are not allowed to ride in the back of a pickup truck or the outside of any other vehicle except a motorcycle.

On-campus student parking is a privilege provided by Houston County High School. Violations of parking lot rules may result in your vehicle being booted, your permit being suspended, or revoked.

There are several actions which will cause your vehicle to be booted or have your parking permit to be suspended or revoked. The following list is a general in nature and does not include all infractions that may result in the disciplinary action indicated:

- *Parking without a parking permit
- *Driving through Central Registration parking lot
- *Parking in the wrong location
- *Going to the parking lots during the school day without permission from an administrator
- *Leaving campus without permission
- *Violating any Houston County School System rules regarding alcohol, drugs, or weapons
- *Violating any rules applicable to Georgia highways

Excessive tardies to school or classes.

The school reserves the right to suspend and/or revoke the campus parking privileges of any student who violates parking rules and regulations or is not in good standing in the school. A student whose parking permit is revoked will not be reimbursed any portion of the parking fee. **The fee for parking permits is non-refundable.**

- Students with 8 tardies will receive a parking suspension warning
- Students with 10 tardies will receive a 5-day parking suspension
- Students with 12 tardies will receive a 10-day parking suspension
- Students with 14 tardies will have their parking privileges suspension for the remainder of the semester