

# CHAPTER 6

# DRIVING CONDITIONS

*Test review*

# 1. Which of the following have no stops or cross traffic?

- a. gravel roads.
- b. State Highways
- c. Interstate freeways
- d. Parkways

# Freeways



2. Applying the \_\_\_\_ rule is a way to help keep a safe distance between your car and the vehicle ahead of you.



## D. Three second rule



3. You are driving at night and suddenly are blinded by the headlights of an oncoming vehicle. What is the best procedure to follow when this happens?

d. Use the solid white line on your right as a reference.



## **4. If your vehicle starts to skid you should:**

- a. Quickly depress the brakes**
- b. Ease your foot off the accelerator**
- c. Use cruise control**
- d. Steer right while slowly depressing the brake.**

Ease your foot off the accelerator



5. Your headlights must be on low beam when following another vehicle within \_\_\_\_\_ feet



b. 200 feet



6. For most instances which headlight beam would be appropriate for driving in foggy conditions?

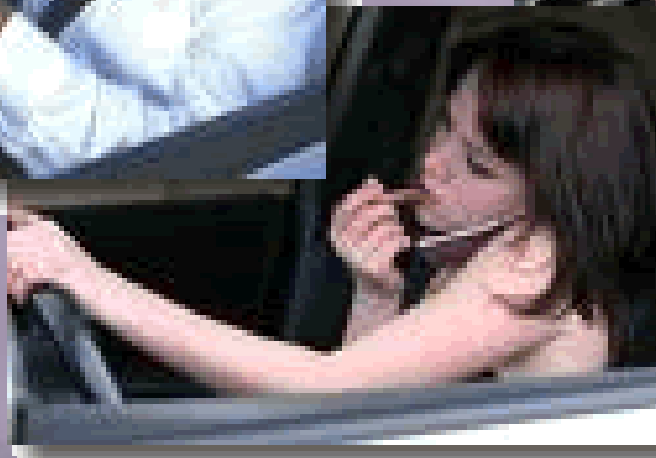
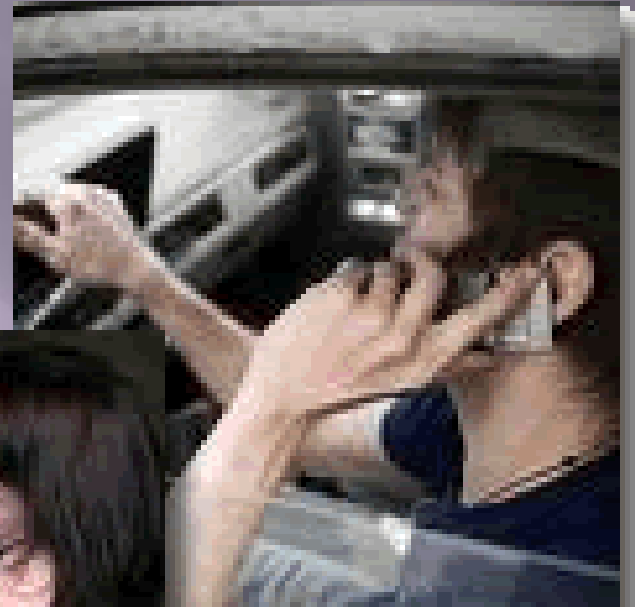
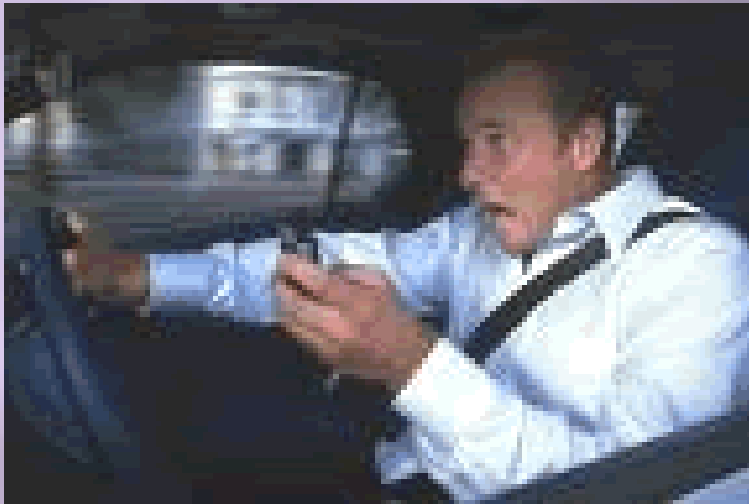
## c. Low beam for most foggy conditions



## 7. The most frequent cause of multiple-vehicle crashes among drivers up to the age of 64 is

- a. Alcohol use
- b. Distracted driving
- c. Disobeying speed laws.
- d. Falling asleep at the wheel.

# Distracted Driving



## 8. If the vehicle behind you is following too closely :

- a. Speed up
- b. Slow down and encourage them to pass.
- c. Turn onto another road.
- d. Pull over to the shoulder of the road and let them pass.



Slow down and encourage them to pass



## 9. Which of the following is not a type of interchange?

- a. Folded diamond
- b. Cloverleaf
- c. Diamond
- d. Folded cloverleaf

## d. Folded cloverleaf



# 10. What should you do if your windshield wipers fail in blinding snow or rain?

- a. Quickly reduce speed
- b. Use your hand to clear the snow or rain
- c. Turn on your headlights
- d. Slow down and activate your hazard lights

**Slow down and activate your hazard warning lights**



11. What should you do if smoke begins to pour from underneath the hood?



Pull off the road, turn off the engine, and exit the vehicle



## 12. What should you do if your car plunges under water?

- a. Open the door and get out
- b. Stay in the front seat and wait until the car sinks, then exit through the windows.
- c. If the car does not sink right away exit through the window.
- d. Exit through the door when the vehicle is exactly half way submerged.

c. If the car does not sink right way, exit through the window.



13. An oncoming vehicle is approaching in your lane. What is the best course of action?



Steer off the road to the right



14. What should you do if your car stalls on the railroad tracks?



Leave your car and walk toward the train.



15. While driving at night, a load extends four feet from the rear of your vehicle, you must:

**Attach a red lantern or lamp to the end of the load**



# 16. The best correction for driver fatigue is rest.

▣ True or False

# True





17. If the wheels go off the edge of the pavement, steer immediately to return to the pavement.

True or False

False





18. Gravity causes a car to decrease speed while going down hill

True or false

False



19. If you have anti-lock brakes and your vehicle begins to skid, pump your brakes to regain control.

True or false

False



20. In heavy rain, standard cars may begin hydroplaning at 35 mph.

True or false



# True



*Remember if the water depth is deeper than the depth of the tire tread a car can hydroplane at any speed*

21. Carbon monoxide has a distinct odor.

True or false



False

Carbon  
Monoxide  
Kills

A human skull is shown against a black background. The words "Carbon", "Monoxide", and "Kills" are written in white, sans-serif font, stacked vertically over the skull's face. The skull is positioned centrally within a black rectangular frame.

**22. Overdriving your headlights mean having them on dim instead of high beam.**

True or False

# False

**Its driving at a speed that you cannot  
stop in the distance you can see ahead.**



23. Running out of gas on the freeway is considered an emergency.

True or false

False



24. The best procedure for handling brake failure is to pump the brakes, shift to a lower gear, and apply the parking brake.

True or false

# True





25. If a tire on your car is losing air rapidly, brake hard right away.

True or false

# False



Ease off the accelerator, hold the steering wheel and steer straight, brake when car is under control

26. If the hood flies up while you are driving , first bend your head down and try looking through the crack below the hood.

True or false

# True



27. When driving down a long steep hill, it is required that the vehicle is kept in gear.

True or false



# True

You cannot coast down the hill with the car in neutral.





28. Nearly half of all traffic crashes in Minnesota occur after dark.

True or false

# True

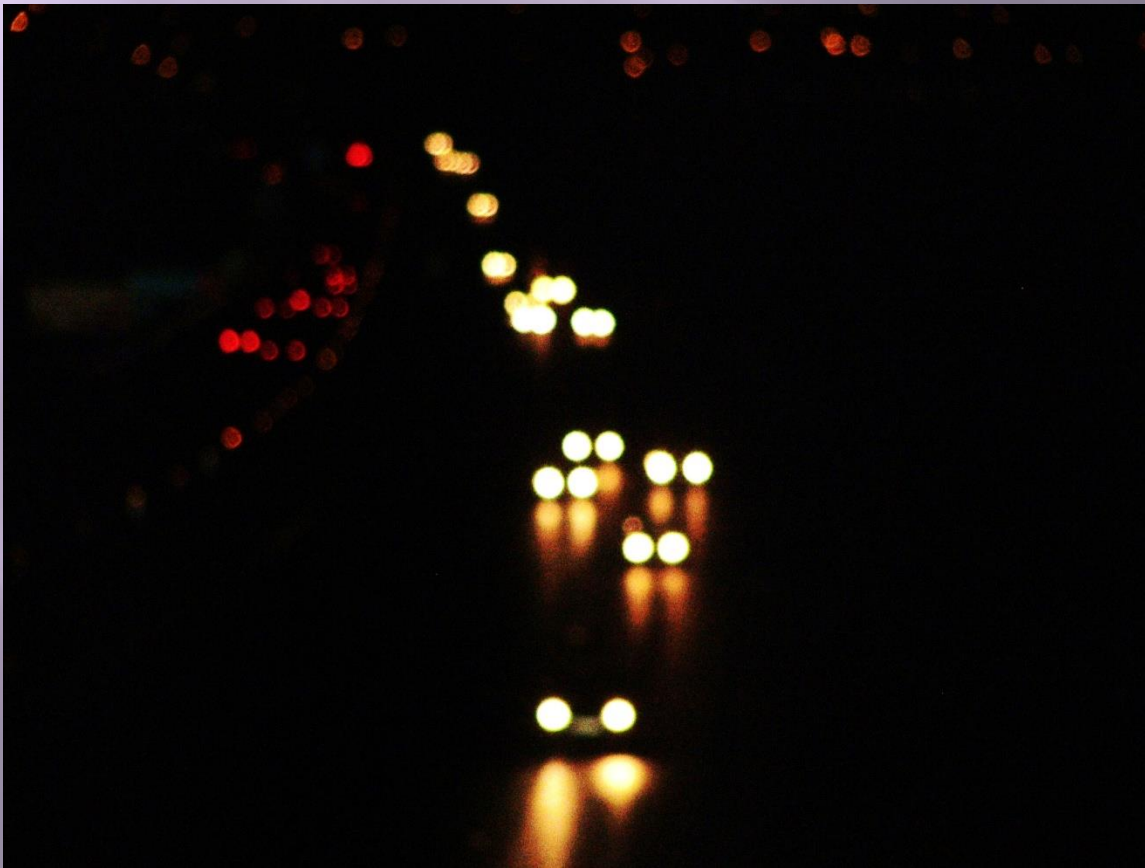


29. When you are within 2000 feet of an oncoming vehicle your headlights must be set to low beam.

True or False

# False

- ▣ 1000 feet of an oncoming car
- ▣ 200 feet when following



30. If the accelerator sticks, making it difficult to control vehicle speed, you should shift to neutral, steer to the side of the road and shut off the engine.

True or false

# True

- ▣ You may be able to free it by hooking your toe under the pedal and raising it.
- ▣ If this does not work apply brakes and shift to neutral
- ▣ Choose a safe path and steer to the shoulder
- ▣ Switch on hazard lights .



31. What corrects the glare caused by headlight behind your car?

# Day-Night mirror



32. What is commonly used in the metropolitan area to reduce traffic jams

# Ramp Meters



33. Must be on from sunset to sunrise

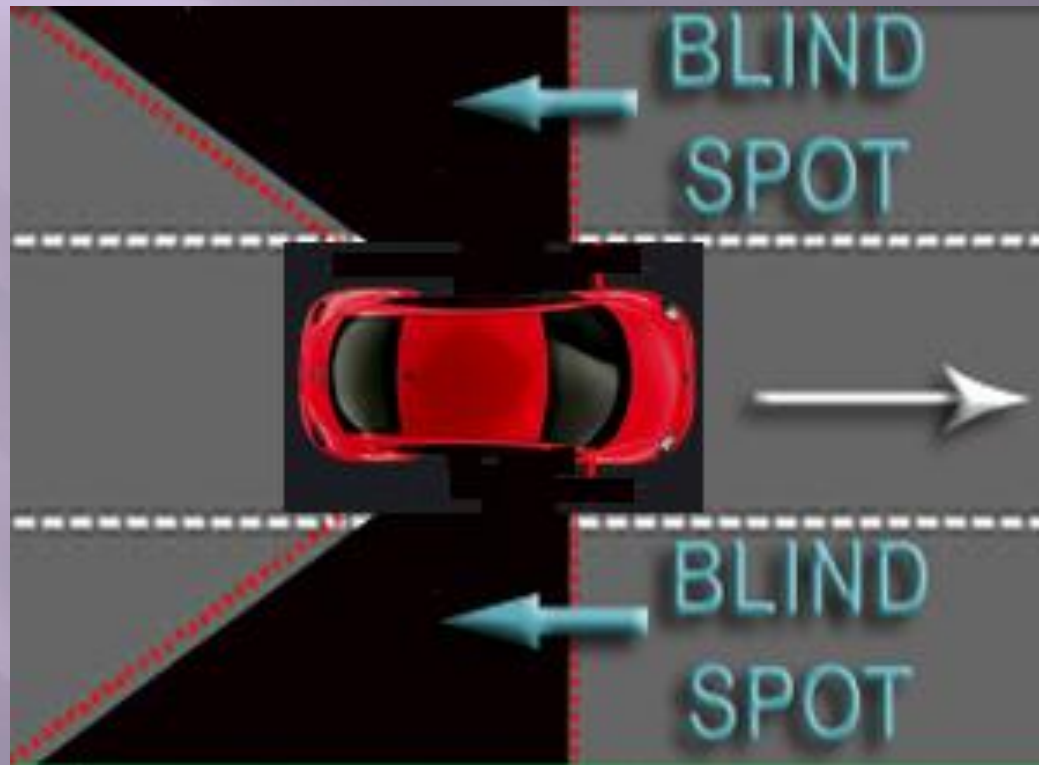
# Headlights





**34. Areas around your vehicle  
where your view is blocked**

# Blind Spot



35. The connection of a freeway to another road by a series of ramps.

# Interchange



36. Can create clouds of snow  
that may conceal driving hazards

# Snowplows





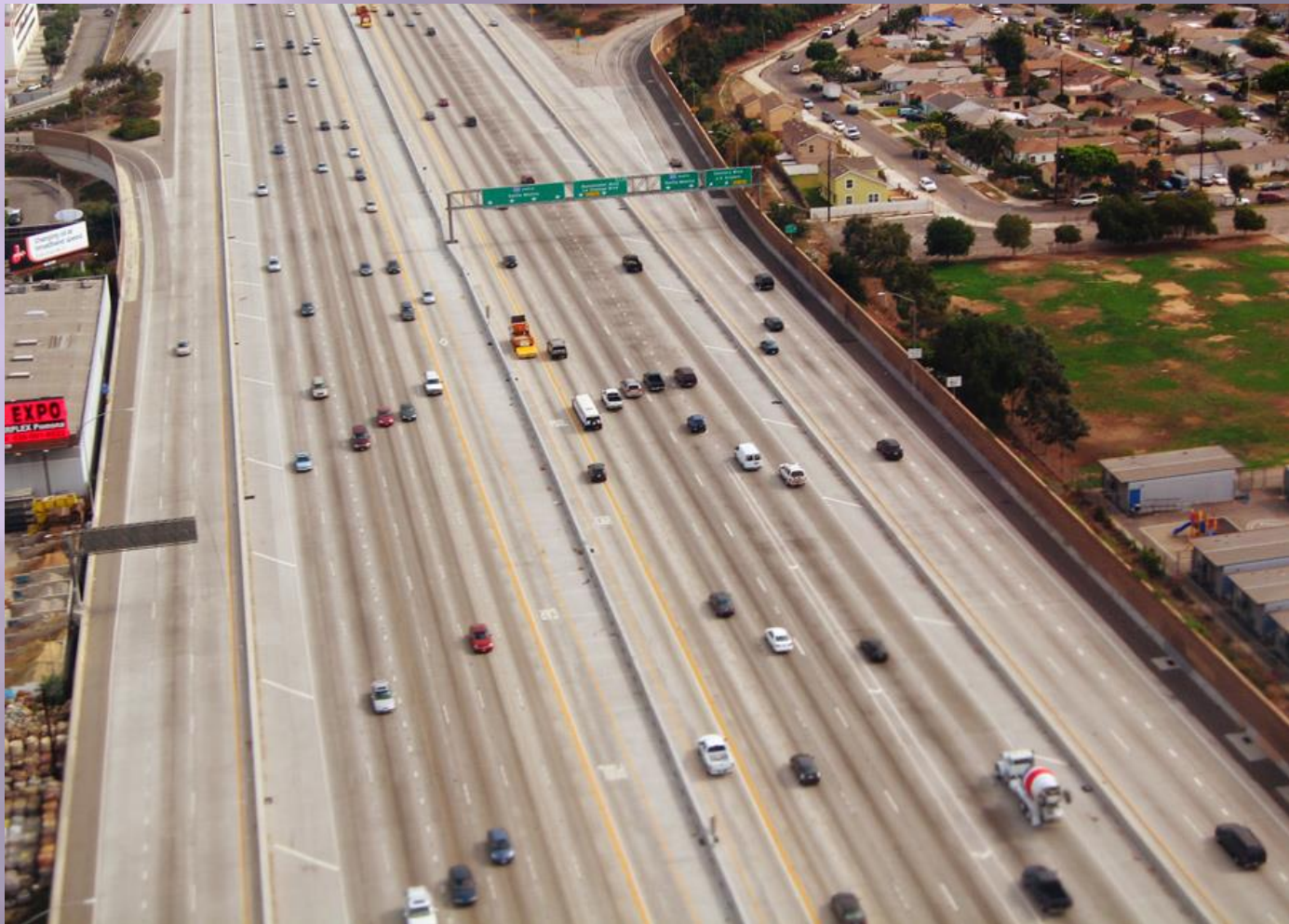
**37. Contains red flags, jumper cables, road flares, and first aid kit.**

# Survival Kit



38. Multi-lane, divided highway with limited access from other roads

# Freeways



39. The lifting of a vehicle off the surface of the road due to the water collecting under the tires.



# Hydroplaning





40. A burst tire that can throw your vehicle out of control.

# Blowout



# The end

- ▣ Good luck on your test!

