

A decorative graphic on the left side of the slide consisting of two overlapping parallelograms. The front one is blue and the back one is a light greenish-blue. Both are tilted at an angle.

Introduction to Studio Arts Graphic Design

This course will prepare the student to integrate pre-production, production, delivery/distribute, quality assurance and presentation phases of Graphic Design

A decorative graphic on the left side of the slide consisting of two overlapping parallelograms. The front one is blue and the back one is a light green color. They are positioned diagonally, with the blue one in front of the green one.

Integrating Art and Graphic Design

What this means is that we are basically a studio art class that implements technology into the lessons and learning.

A decorative graphic on the left side of the slide consisting of overlapping geometric shapes. It includes a blue parallelogram, a light green parallelogram, and a dark blue parallelogram, all with black outlines, arranged in a layered fashion.

Mr Bangund & Mr Robertson!

Your CTE Teachers for
Graphic Design



Technology Used

Illustrator

Photoshop

Indesign

Dell Notebooks



Art Materials

Graphite

Charcoal: Compressed, Vine, and White

Chalk

Oil Pastel

Paint: Watercolor, Acrylic, Black and White Studies

Clay

Scratch Art



Projects

Portraits

Still life

Landscapes

Logo Designs

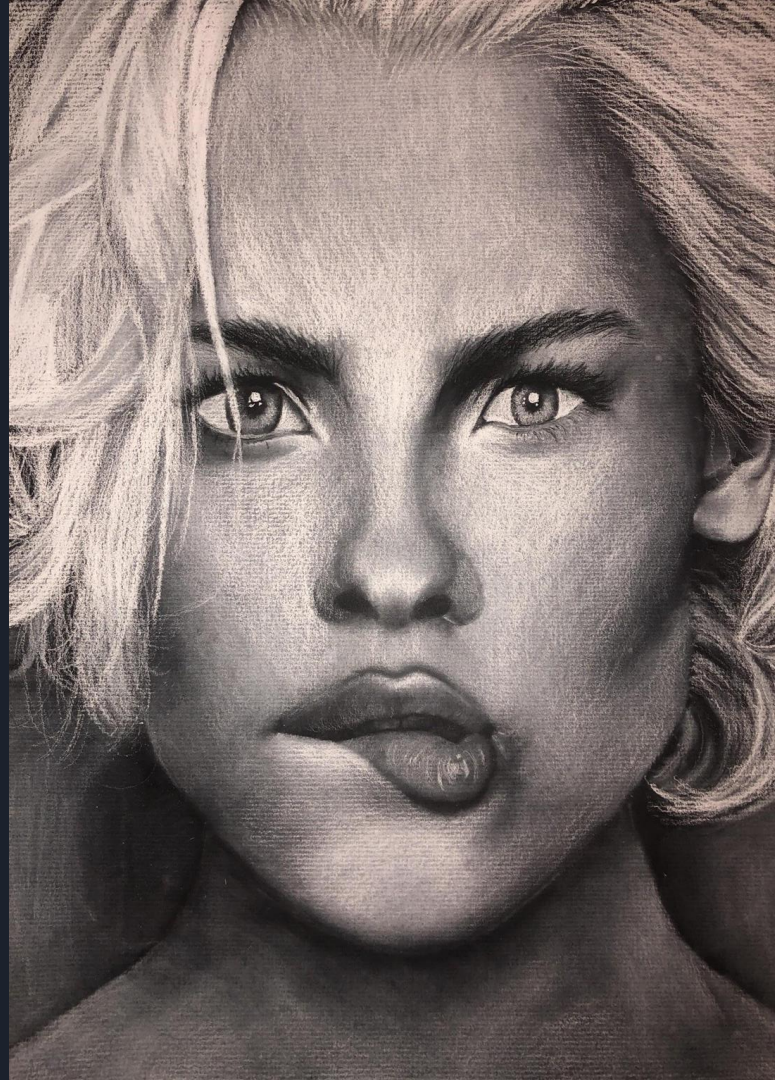
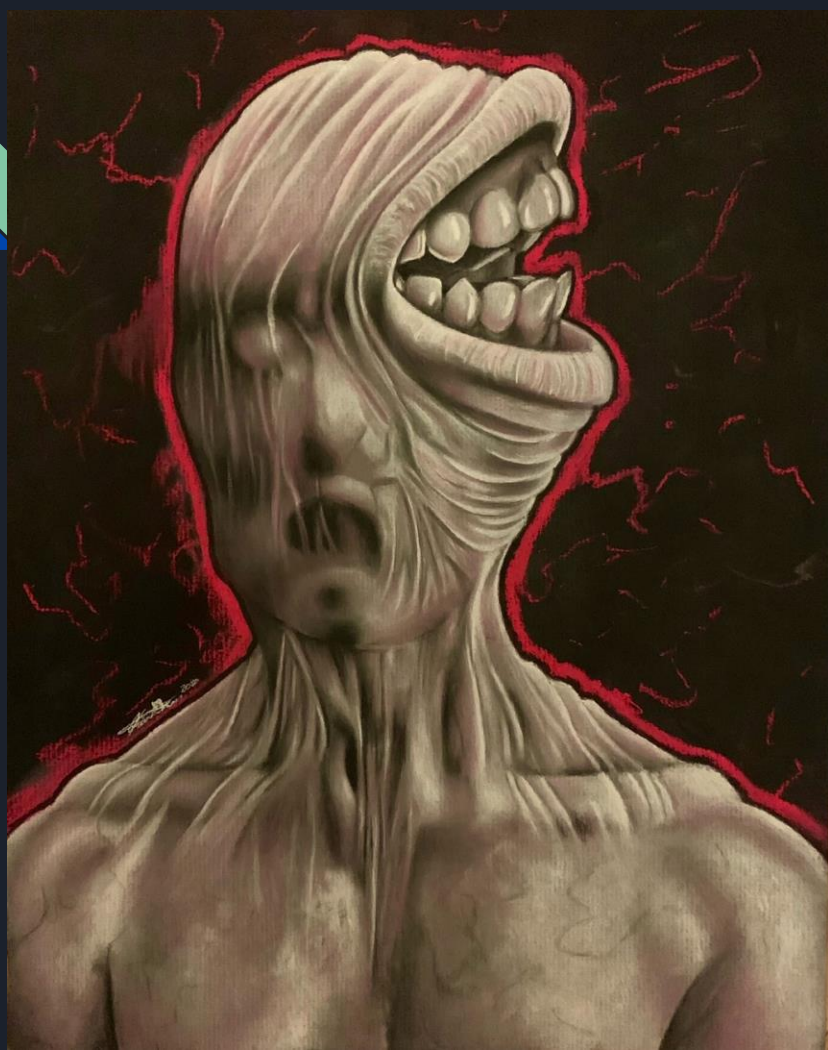
Vectoring Projects

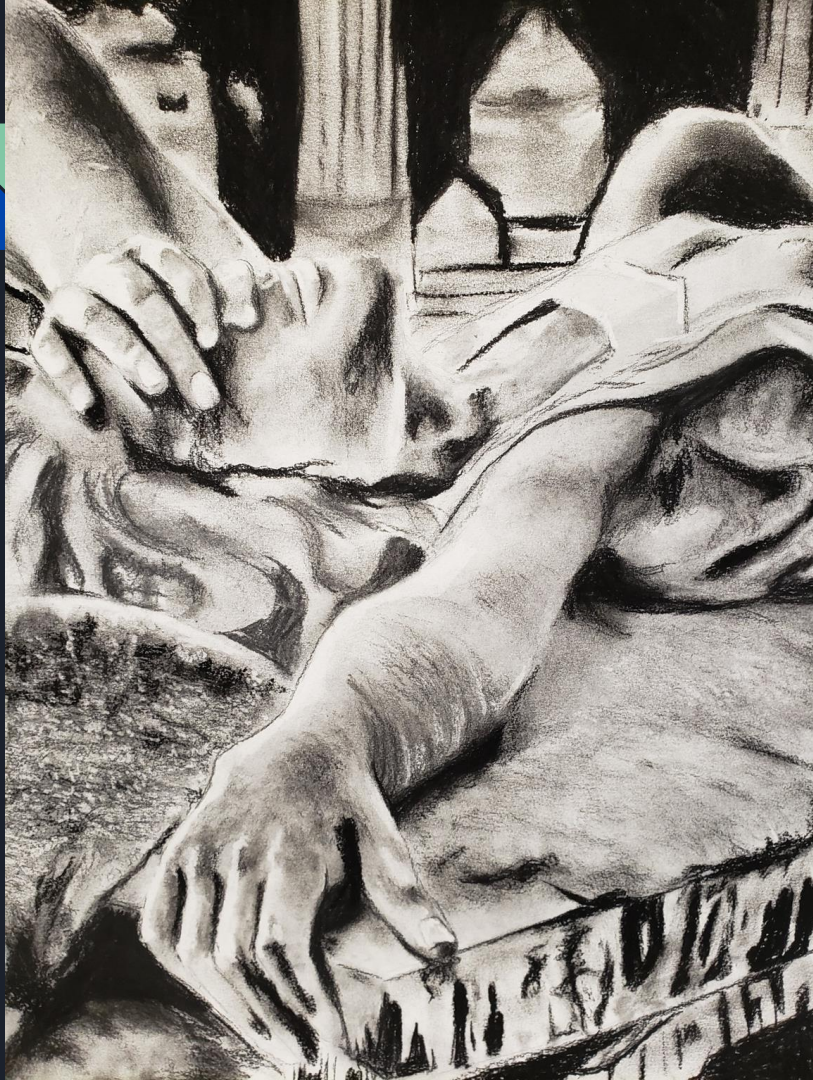
Animal and Plant Studies

Realistic Drawing Techniques

Student Work













CTSO

This is a professional organization that offers real life skill competitions.

Graphic Design competes in a Advertising Contest, Shirt Design, Pin Design, Photography as well as Leadership Contests.

This is through SkillsUSA (great organization)



Graphic Designer Program Completers

Our program completers are to take a Arizona Standards Test, Pass a Adobe Certificate Test and have a GPA better than a 3.50 can receive a Extra CTE Cord to wear at Graduation Ceremonies.



Do have any
questions at
this point?