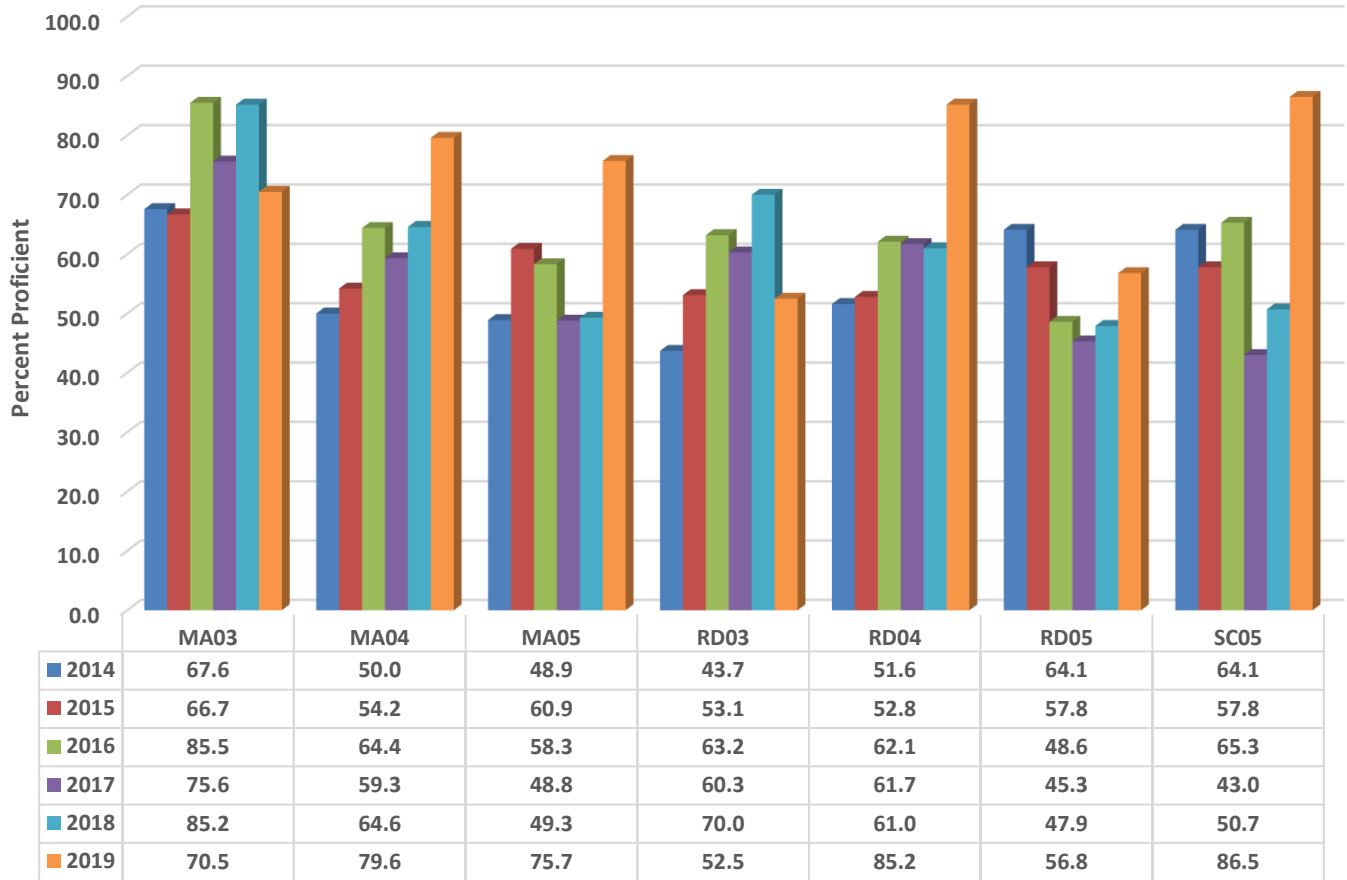


John Lawrence Elementary Six Year Comparison Using GLP



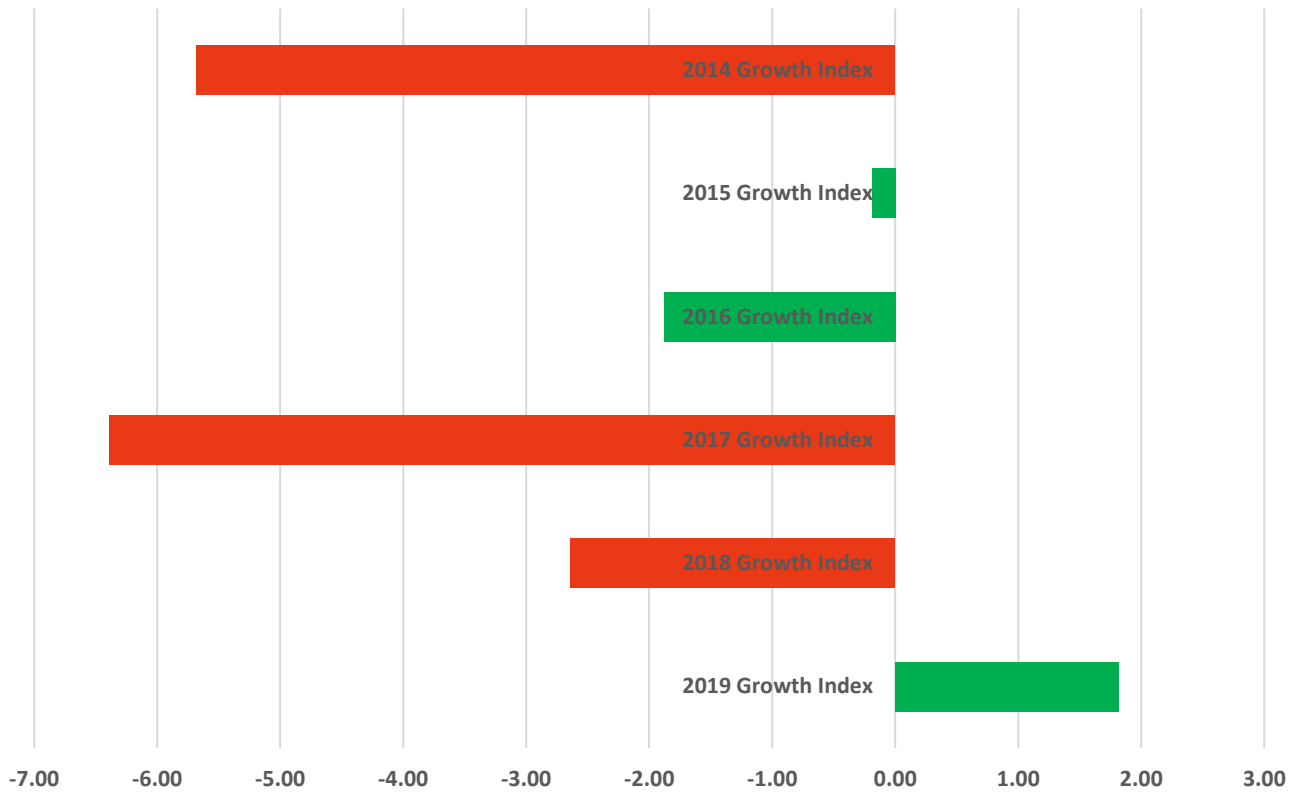
READY Accountability Model

	CCR Denominator	CCR Percent	GLP Denominator	GLP Percent
2014	546	43.8	546	56.2
2015	498	50.0	498	57.6
2016	542	53.7	542	64.0
2017	576	46.7	576	55.9
2018	504	53.4	504	60.5
2019	452	58.0	452	72.1

Growth and Participation Targets

	Growth Status	Total Targets	Targets Met	Target Percent
2014	Did Not Met Expected Growth	19	14	73.7
2015	Met Expected Growth	17	12	70.6
2016	Met Expected Growth	12	12	100.0
2017	Did Not Met Expected Growth	11	11	100.0
2018	Did Not Met Expected Growth	10	10	100.0
2019	Met Expected Growth	11	11	100.0

John Lawrence Elementary Six Year Growth Index



	2019 Growth Index	2018 Growth Index	2017 Growth Index	2016 Growth Index	2015 Growth Index	2014 Growth Index
■ Lawrence	1.82	-2.64	-6.39	-1.88	-0.19	-5.68

Growth Index

	School Accountability Type	Index	Level
2014	Math, Reading, and Science	-5.68	Did Not Met Expected Growth
2015	Math, Reading, and Science	-0.19	Met Expected Growth
2016	Math, Reading, and Science	-1.88	Met Expected Growth
2017	Math, Reading, and Science	-6.39	Did Not Met Expected Growth
2018	Math, Reading, and Science	-2.64	Did Not Met Expected Growth
2019	Math, Reading, and Science	1.82	Met Expected Growth