

Flatworm Web Quest

<http://www.earthlife.net/inverts/platyhelminthes.html>

1. What does the name Platyhelminthes mean?
2. What type of symmetry do flatworms have?
3. How do flatworms reproduce?
4. What does it mean to have a blind gut?
5. Flatworms all have a mouth but NO _____

<http://www.ucmp.berkeley.edu/platyhelminthes/platyhelminthes.html>

6. Flatworms are called acoelomates, in reference to their body structure.
 - a. Do flatworms have a stomach?
7. How do flatworms breathe?
8. What does it mean to be paraphyletic?

<http://www.biology-questions-and-answers.com/flatworms.html>

9. What does it mean to be triploblastic?
 - a. Name the 3 layers in flatworms.
10. Describe digestion in flatworms.

11. What are Flame Cells?

Click on the name of a Class below to learn more:

1. Class [Turbellaria](#) (turbellarians, flatworms)
 - a. How many species of Tubellarians are there?
 - b. Describe how Turbellarians swim?
 - c. What do members of Tubellaria eat?
 - d. What is the role of [protonephridia](#)

2. Class [Trematoda](#) (parasitic flukes)
 - a. What does it mean when it says all Trematodes are parasites?
 - b. What does it meant to have an external layer that is syncytial?
 - c. What causes schistosomiasis?

3. Class [Cestoda](#)
 - a. What is the common name for Class Cestoda?
 - b. What are 4 differences between flatworms in Class Cestoda compared to other worms?
 - c. What is a scolex? Why is it needed?

TAPEWORM

<http://www.mayoclinic.com/health/tapeworm/ds00659/dsection=causes>

4. How do you get tapeworms?

5. Where does a tapeworm develop from an egg into a larva?

6. How long can an adult tapeworm get?

7. Where can a tapeworm migrate if it leaves the intestines?

<http://www.merck.com/mmhe/sec17/ch196/ch196p.html>

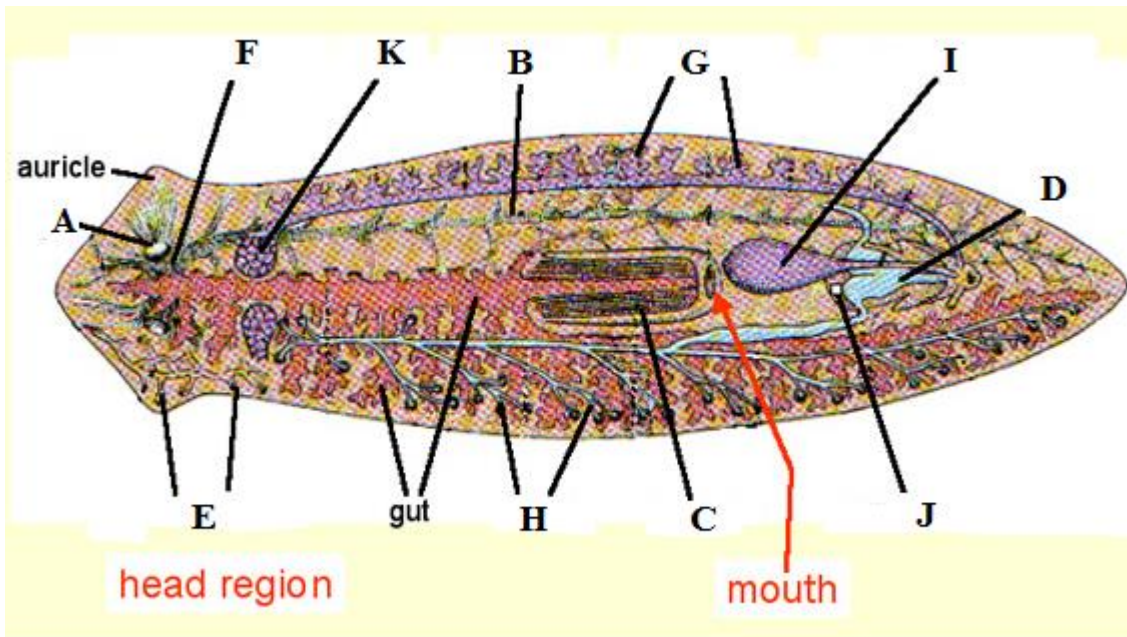
8. What are some of the symptoms a person might experience if they have a tapeworm?

9. How does a person prevent getting infected?

10. How is a person treated if they are infected?

PLANARIA

<http://www.cals.ncsu.edu/course/zo150/mozley/fall/flatworm.jpg>



Use the Diagram found on this page to identify structures A through K

- A.
- B.
- C.
- D.
- E.
- F.
- G.
- H.
- I.
- J.
- K.