



JANUARY

2021

Odem – Edroy ISD Elementary & Intermediate School Lunch Menu



m

t

w

th

f

Special Announcements:

**** Menu Subject to Change ****

Owl Daily Choices

1.Hot Meal 2. Sandwich Pack 3. Baked Potato. The lunch requires students to select a fruit or vegetable as part of their meal. Milk variety available daily: 1% White Milk , Fat Free Chocolate Milk.

Happy New Year!

1.

NO SCHOOL

4.

NO SCHOOL

5.

Beef Enchiladas
Chicken Fajita Taco
Pinto Beans
Spanish Rice
Romaine & Spinach Salad / Dressing
Fruit or Fresh Fruit

6.

Vegetable Soup
Grilled Toast
Corn Chips
Baby Carrots / Dressing
Fruit or Fresh Fruit

7.

Pepperoni Pizza
Peas & Carrots
Spinach Salad / Dressing
Fruit or Fresh Fruit

8.

Cheese Burger
Baked Beans
Burger Salad
Baked Fries
Fruit or Fresh Fruit

11.

Chili Dog / Shredded Cheese
Baked Tots
Cucumber Slices / Dressing
Fruit or Fresh Fruit

12.

Nacho Supreme
Pinto Beans
Spanish Macaroni
Romaine & Diced Tomato
Fruit or Fresh Fruit

13.

Chicken Strip
Mashed Potato / Gravy / Hot Roll
Broccoli Normandy
Fruit or Fresh Fruit

14.

Frito Pie / Shredded Cheese
Seasoned Corn
Baby Carrots / Dressing
Fruit or Fresh Fruit

15.

No School

18.

Chicken Alfredo
Green Beans & Hot Roll
Baby Carrots / Dressing
Fruit or Fresh Fruit

19.

Beef Taco
Pinto Beans
Spanish Rice
Romaine & Diced Tomato
Fruit or Fresh Fruit

20.

Chicken Patty Burger
B.B.Q Beans
Baked Fries
Burger Salad
Fruit or Fresh Fruit

21.

Corn Dog
Baked Tots
Baked Beans
Celery Sticks / Dressing
Fruit or Fresh Fruit

22.

Chicken Nuggets
Mashed Potato / Gravy
Hot Roll
Steam Broccoli
Fruit or Fresh Fruit

25.

Burrito / Chili / Cheese
Seasoned Corn
Baked Tots
Baby Carrots/ Dressing
Fruit or Fresh Fruit

26.

Chicken Over Rice
Hot Roll
Green Beans
Spinach Salad / Dressing
Fruit or Fresh Fruit

27.

Vegetable Soup
Grilled Cheese
Corn Chips
Celery Sticks/ Dressing
Fruit or Fresh Fruit

28.

Pepperoni Pizza
Seasoned Corn
Baby Carrots/ Dressing
Fruit or Fresh Fruit

29.



TEXAS DEPARTMENT OF AGRICULTURE
COMMISSIONER SID MILLER

This product was funded by USDA.

This institution is an equal opportunity provider.



Food and Nutrition Division
National School Lunch Program and School Breakfast Program



Updated 01/2020
www.SquareMeals.org

TEXAS STAR CITRUS

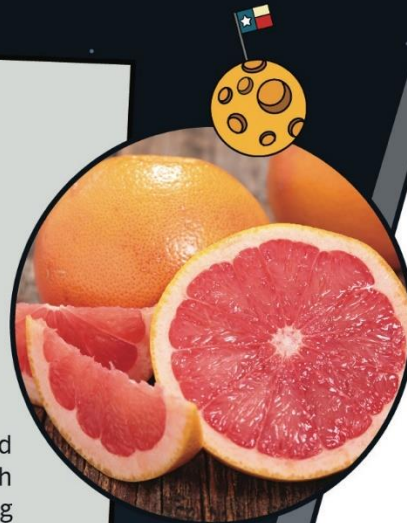


Stars are giant balls of superhot gas. Explosions in their centers create the bright light that we see. Did you know that our sun is a star? The star closest to earth is the sun. It takes about 8 minutes for light to travel from the sun to the Earth, so it is about 8 light minutes away. It takes 4.2 years for light from the next closest star, Proxima Centauri, to travel to Earth. It is 4.2 light years away. When you see the sun, you are seeing what it looked like 8 minutes ago and you see what Proxima Centauri looked like 4.2 years ago.

DID YOU KNOW?

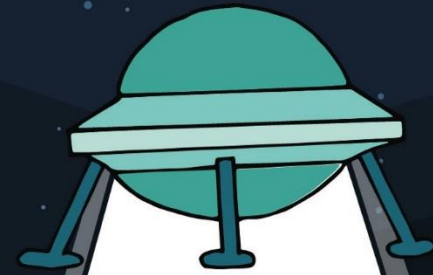
Red grapefruit is the state fruit of Texas. In 1929 Texas citrus growers discovered a special grapefruit with a red color inside. Red grapefruit became the Official State Fruit of Texas in 1993.

Many people think the red grapefruits taste sweeter. Grapefruits got their name from growing in bunches like grapes. The Texas red grapefruit is high in vitamins A and C, which means eating a Texas red grapefruit or drinking its juice, is good for the eyes and skin, and strengthens the body's immune system.

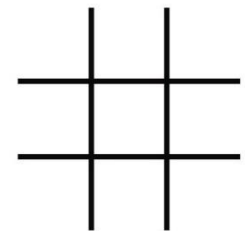
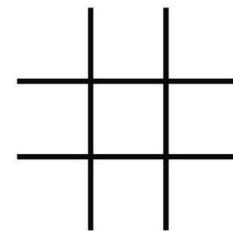
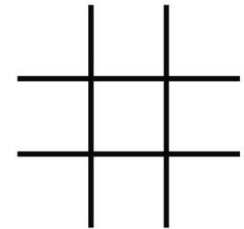
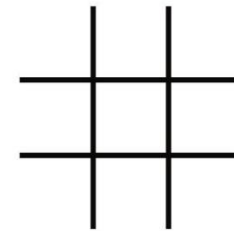
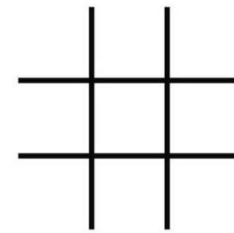


TEXAS DEPARTMENT OF AGRICULTURE
COMMISSIONER SID MILLER

This product was funded by USDA.
This institution is an equal opportunity provider.



TIC-TAC-TOE



Food and Nutrition Division
National School Lunch Program and School Breakfast Program



Updated 01/2020
www.SquareMeals.org