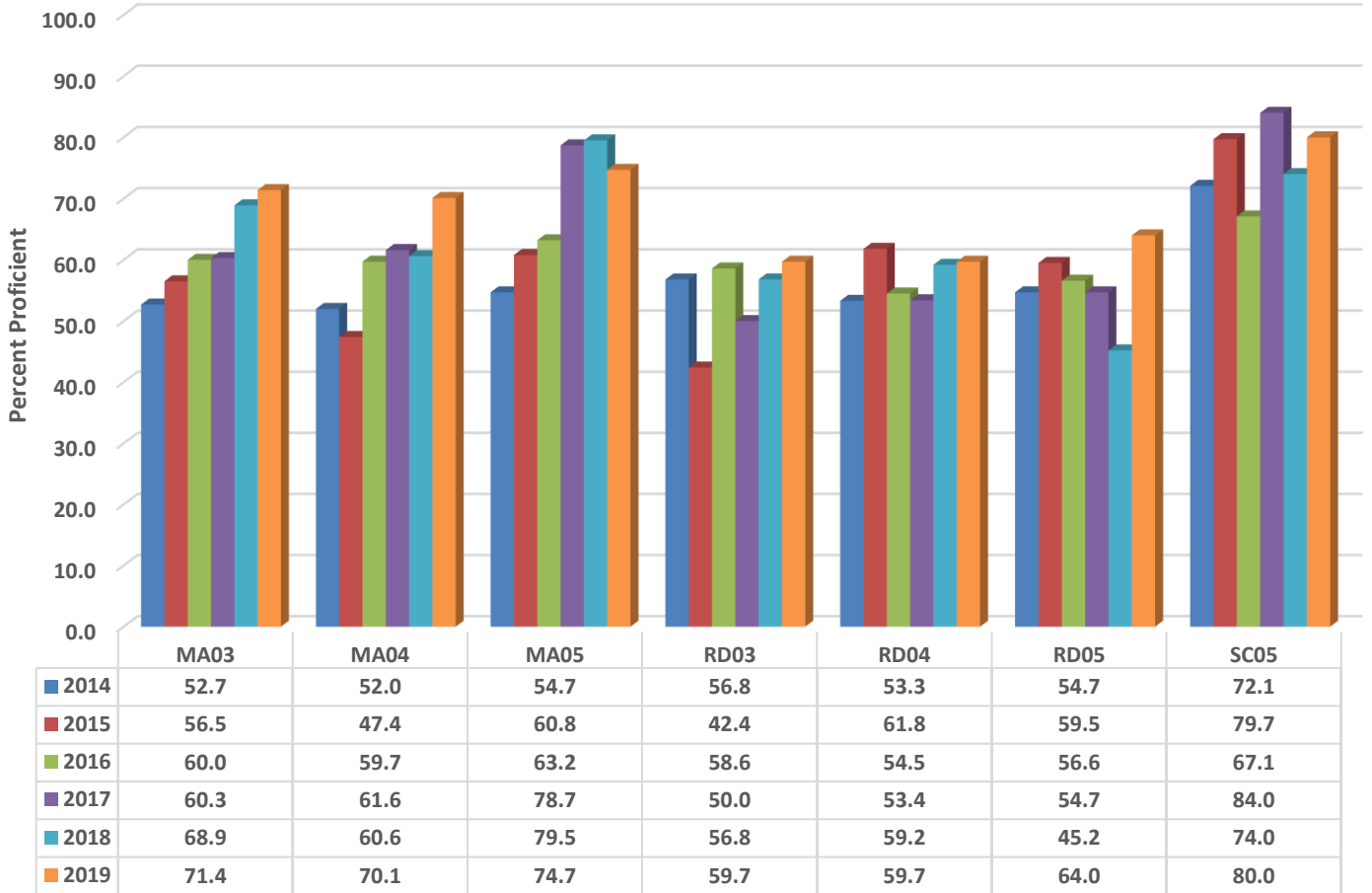


### Trinity Elementary Six Year Comparison Using GLP



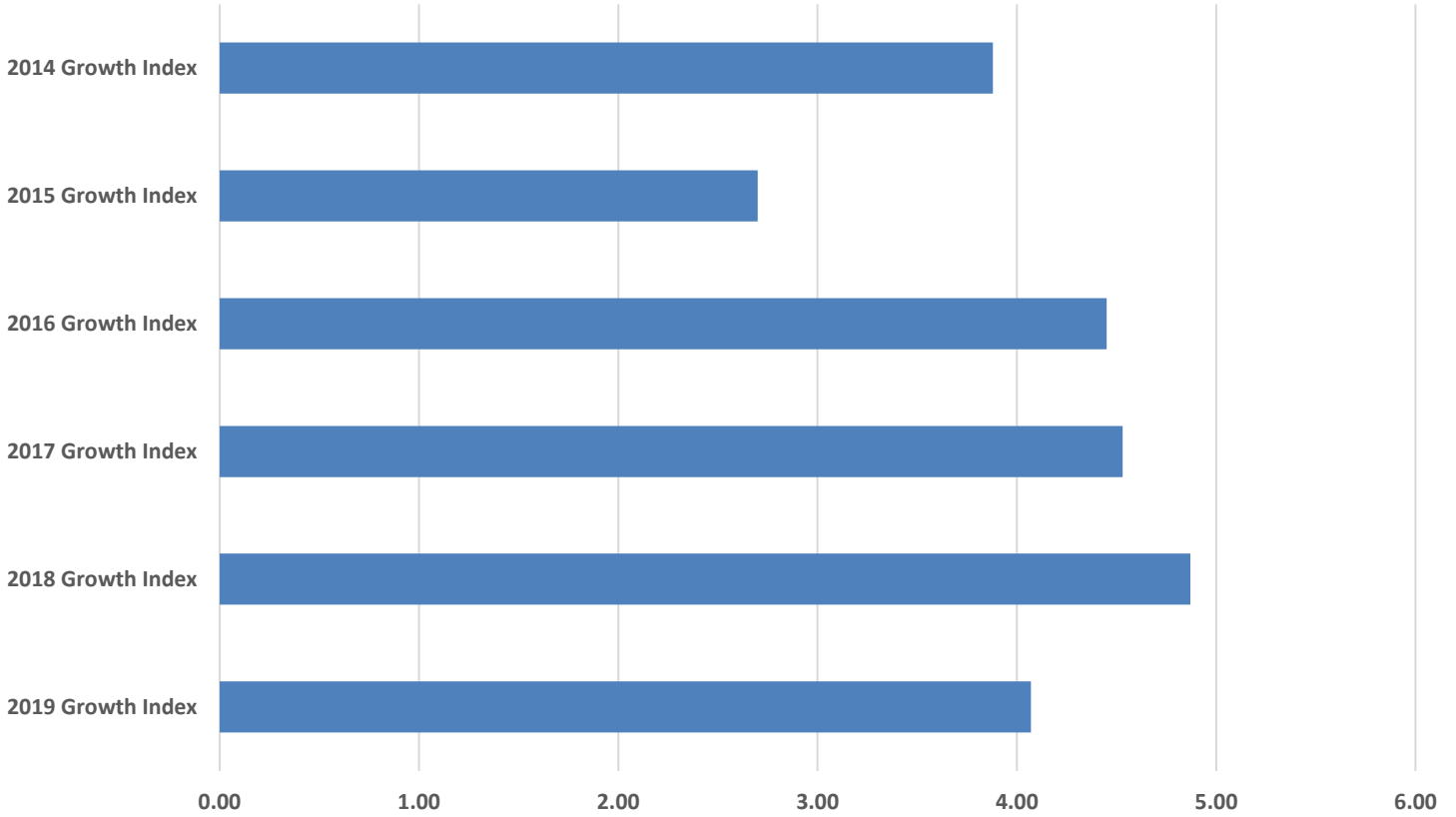
### READY Accountability Model

	CCR Denominator	CCR Percent	GLP Denominator	GLP Percent
2014	556	41.5	556	56.8
2015	559	46.3	559	58.1
2016	522	50.6	522	60.0
2017	507	51.9	507	63.5
2018	509	53.4	509	63.5
2019	513	53.4	513	68.6

### Growth and Participation Targets

	Growth Status	Total Targets	Targets Met	Percent Met
2014	Exceeded Expected Growth	23	20	87.0
2015	Exceeded Expected Growth	21	16	76.2
2016	Exceeded Expected Growth	11	11	100.0
2017	Exceeded Expected Growth	11	11	100.0
2018	Exceeded Expected Growth	11	11	100.0
2019	Exceeded Expected Growth	11	11	100.0

## Trinity Elementary Six Year Growth Index



	2019 Growth Index	2018 Growth Index	2017 Growth Index	2016 Growth Index	2015 Growth Index	2014 Growth Index
■ TES	4.07	4.87	4.53	4.45	2.70	3.88

### Growth Index

	School Accountability Type	Index	Level
<b>2014</b>	Math, Reading, and Science	3.88	Exceeded Expected Growth
<b>2015</b>	Math, Reading, and Science	2.70	Exceeded Expected Growth
<b>2016</b>	Math, Reading, and Science	4.45	Exceeded Expected Growth
<b>2017</b>	Math, Reading, and Science	4.53	Exceeded Expected Growth
<b>2018</b>	Math, Reading, and Science	4.87	Exceeded Expected Growth
<b>2019</b>	Math, Reading, and Science	4.07	Exceeded Expected Growth