

Arizona Accountability

School Letter Grade Formula

October 17, 2017



New School Letter Grade Formula



State Board of Education Approves New A-F Formula

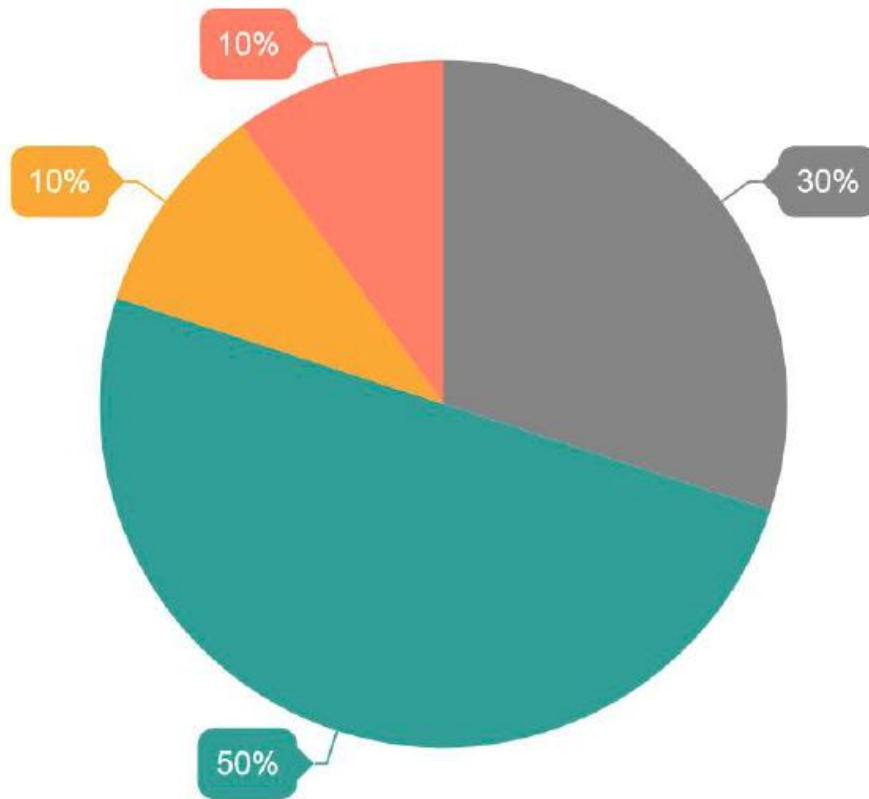
The process to review, gather input on, and update the current system began last fall. The State Board of Education Created an Ad Hoc Committee to develop a recommended framework. After several meetings, robust technical review and a tour around Arizona to get feedback from the public, the A-F Accountability Ad Hoc Committee voted to forward recommendations to the full State Board of Education. The recommendations approved by the board are as follows:

K-8 A-F Accountability

K-8 Recommendation from the Ad Hoc			
Category	Component	Weight	Points/Percent
Proficiency	ELA, Math, and Science Proficiency (0, .6, 1.0, 1.3) 3 Years FAY	30%	30%
Growth	SGP/SGT on ELA, Math	25% SGP 25% SGT	50%
ELL	ELL Proficiency on AZELLA	5%	10%
	ELL Growth on AZELLA	5%	
Acceleration /Readiness	Grades 5, 6, 7, 8 HS EOC combined, Grade 3 ELA MP, Chronic Absenteeism, Inclusion of students with high incident and low incident disabilities in general education; improved growth of subgroups	10%	10%

K-8 Accountability Measures

K-8



■ AzMERIT Proficiency (30%) ■ Growth (50%) ■ Proficiency & Growth of ELL (10%) ■ Acceleration/Readiness (10%)

9-12 A-F Accountability

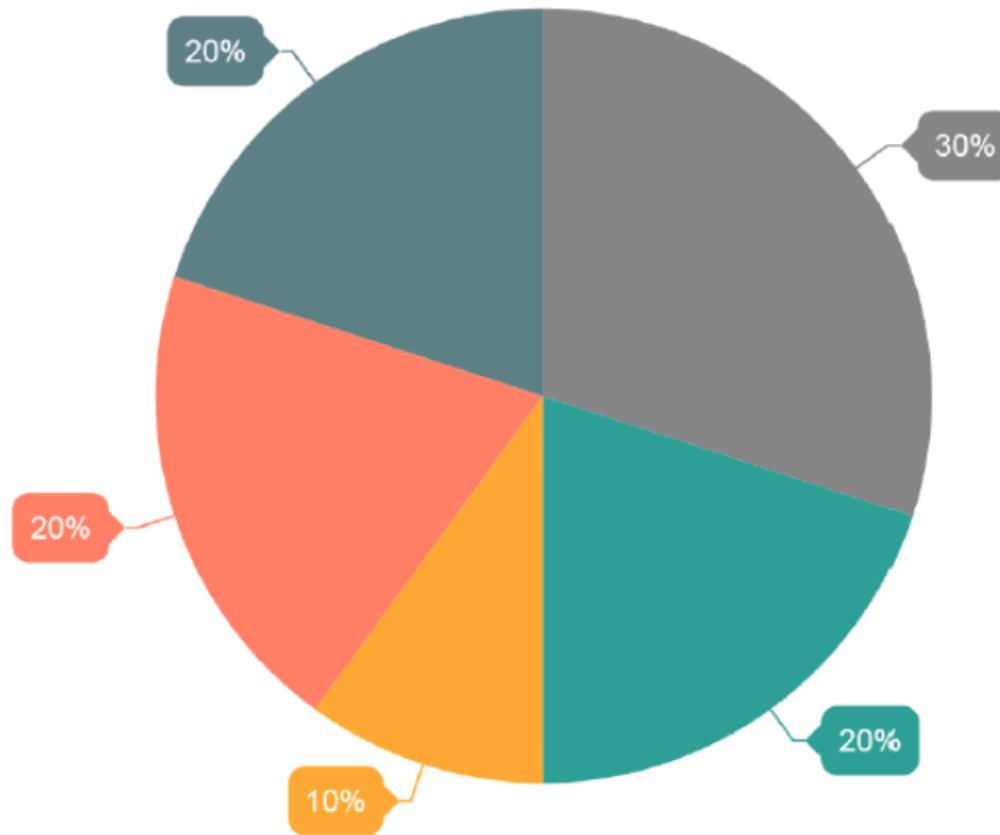
9-12 Recommendation #2 from Advisory Ad Hoc



Category	Component	Weight	Points/Percent
Proficiency	ELA, Math, and Science Proficiency (0, .6, 1.0, 1.3)	30%	30%
Growth	SGP/SGT on ELA, Math	10% SGP 10% SGT	20%
ELL	ELL Proficiency on AZELLA	5%	10%
	ELL Growth on AZELLA	5%	
College and Career Ready	Student level scoring On a variety of self reported data	20%	20%
Graduation Rate	4-year	10	20%
	5-year	8	
	6-year	5	
	7-year	1	

9-12 Accountability Measures

9-12



■ AzMERIT Proficiency (30%) ■ Growth (20%) ■ Proficiency & Growth of ELL (10%) ■ College & Career Readin.. (20%)



Calculations for All Indicators

- Model is based on 0-100 points available
- Must have 20 students per indicator to count
- All measures are capped
- One year full academic year students only



Proficiency – 30%

- Assessments included – AzMERIT ELA, Math, MSAA Alternative Assessments, AIMS Science, AIMS-A Science
- Only full academic year (FAY) students count
- K-8 stability points – one year 5 pts, two years 10 pts, three years 15 points

Proficiency Level	Score
Minimally Proficient	0
Partially Proficient	.6
Proficient	1
Highly Proficient	1.3



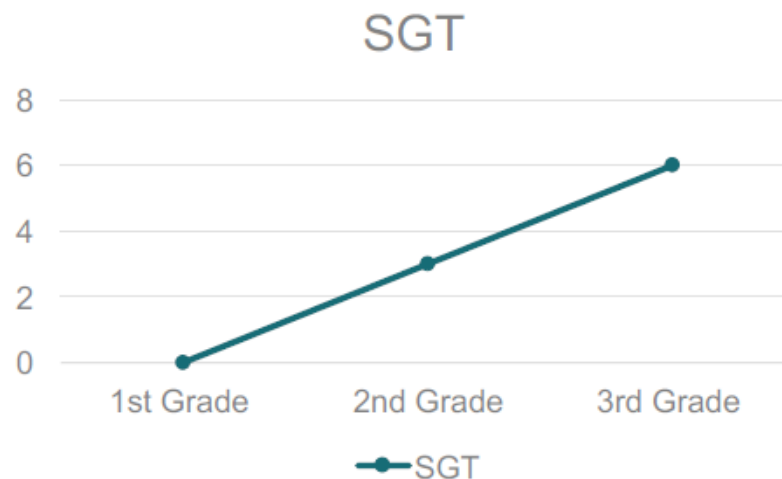
Student Growth Percentile

- K-8 = 25% and 9-12 = 10%
- Growth is calculated based on prior year performance and their growth level in the current year
- SGP measures a student's growth over one year relative to their peers.

Classification	Percentiles
Low	1-33
Average	34-66
High	67-99

Student Growth to Target

- K-8 = 25% and 9-12 = 10%
- Students are assigned a proficiency target that must be met in 3 years or 8th/11th grade, whichever is first
- Students get the points if they hit their target
- Lower performing students get the most points for hitting their target




Point Breakdown for Growth

SGP Growth				SGT Growth		
Prior Year HP	0	0.25	0.5	Prior Year HP (Stay Up)	0	0.25
Prior Year P	0	0.375	0.625	Prior Year P (Keep Up)	0	0.5
Prior Year PP	0	0.625	0.875	Prior Year PP (Catch Up)	0	0.75
Prior Year MP	0	0.75	1	Prior Year MP (Catch Up)	0	1
	0-33	34-66	67-99		Current Year Did Not Meet Target	Current Year Met or Exceeded Target
	Current Year Low Growth	Current Year Average Growth	Current Year High Growth			



English Language Learners – 10%

- Proficiency – 5%
 - Schools get points based on the percentage of students proficient on AZELLA compared to State average
- Growth – 5%
 - Schools get points based on their growth in comparison to the state's average
- Who counts?
 - Current ELL students with two AZELLA scores to measure growth
 - Schools with less than 20 ELL students do not get these points, their total is instead calculated with a max of 90 not 100



K-8 Acceleration/Readiness Measures - 10%

- Menu of items that schools can earn up to 10 points, out of 18, depending on school configuration

Menu Item	Total Points
End of Course Math Testing	5 pts
Decreasing 3 rd Grade Minimally Prof.	5 pts
Subgroup Improvement	2 pts each, 6 pts max
SPED Inclusion	2 pts
Chronic Absenteeism	5 pts



End of Course Math Testing

- Schools can earn a total of 5 pts
- Increasing the percentage of 5-8 grade students accelerating in EOC math
- Schools can earn full points in one of two ways:
 - Current year prof. percent is greater than prior year prof. percent
 - Current year and prior year prof. percentage equals 100

Decreasing 3rd Grade Minimally Proficient

- A school can earn up to 5 pts
- Schools can earn full points by one of two ways:
 - The current minimally proficient percentage is less than the prior years
 - The current minimally proficient percentage and the prior year minimally percentage equals 0



Subgroup Improvement

- Schools can earn 2 pts per group with a max of 6 pts
- Groups that are included per ESSA
 - White, African American, Hispanic, Asian, Native American, Pacific Islander, Two or more races, ELL, Special Education, FRL, Gender
- Improvement is measured by comparing the school's current year proficiency to the prior year state average for the subgroup



SPED Inclusion

- Eligible schools can earn up to 2 pts
- Schools with 7% or more of their population in special education are eligible
- To earn points students must spend 80% of their day in the general education classroom



Chronic Absenteeism

- Students are considered chronically absent if they miss 18+ days a year
- Schools can earn points if:
 - The current year chronic absenteeism percentage is less than the prior year percentage
 - The current and prior year chronic absenteeism percentage equals 0



9-12 A-F Accountability

College and Career Ready 20%

Note: Schools Self Report Data

Graduation Rate 20%



College and Career Readiness Indicators (CCRI) Menu - 20%

- Schools can earn up to 2 pts in any combination of college or career indicators per graduating senior
- Students must earn at least 1 pt to generate 10 CCR points
- Students who earn 2 pts will generate 20 CCR points
- Bonus Points
 - Students who earn 1 pt from the red indicators and 1 pt from the blue will generate 2 bonus points
 - 1 pt for schools that increase the percent of post secondary enrollment or 85% post-secondary enrollment and military enlistment of the prior years graduates

College and Career Readiness Rubric

Indicator Points	Indicators
1.25	Earns a Grand Canyon Diploma or International Baccalaureate Diploma - Blue
1.25	Completes a CTE sequence and passes the Arizona Technical Skills Assessment for that sequence – Red
.5 per exam	Passing score on AzMERIT Algebra 2 or ELA 11 - Blue
.35 per exam	Meets cut score on ACT English, math, reading or science exam- Blue
.5 per exam	Meets cut score on SAT English or math exam - Blue
.5 per exam	Meets cut score on any AP exam - Blue
.3	Completes the FAFSA - Red or Blue
.5 per course	Passes a college level career pathway (CTE) course for which college credit can be earned with an A, B, or C (i.e. dual enrollment and concurrent enrollment) - Red
.5 per course	Passes a college level English, math, science, social studies, or foreign language course for which college credit can be earned with an A, B, or C (i.e. dual enrollment and concurrent enrollment) – Blue
.25 per course	Completes a CTE course with an A, B, or C (outside of completed sequence referenced above) – Red
.5	Meets benchmarks for ASVAB - Red
.5	Meets benchmarks for ACT WorkKeys - Red
.35 per exam	Meets cut score on ACCUPLACER, ALEKS, COMPASS (or any nationally recognized college placement exam currently used by an Arizona institution), or Cambridge IGCSE English, reading, writing, math, social studies, science, or foreign language exam - Blue
.5 per exam	Meets cut score on CLEP, Cambridge A or AS, or IB English, math, social studies, science, or foreign language exam - Blue
.5 per credential, certificate, or license	Earns an Industry-Recognized Credential, Certificate, or License - Red No more than one point may be awarded in this indicator.
1	Completes well-defined Work-Based Learning (i.e. internship) of at least 120 hours - Red
1	Meet all 16 Arizona Board of Regents program of study requirements - Blue

COLLEGE AND CAREER READINESS RUBRIC CREDENTIALS:
Recommendations on Credentials to Include in the A-F System for 2016-17
Developed by the Arizona Career and College Ready Task Force

Credentials Recommended for Possible Inclusion in A-F in the Current School Year

The following are credentials that the Task Force identified as worth of consideration for use in the first year. All of these credentials met one of two criteria. They are widely or nationally recognized as valuable to an industry, or they are licenses required by the State of Arizona to work in that field. These credentials are listed by CTE Program of Study.

1. Aircraft Mechanics: FAA Certifications in Airframe Mechanic or Power Plant Mechanic
2. Automotive Collision Repair and Automotive Technologies: ASE Student Certifications (There are many different certifications, ranging from paint and refinishing to engine repair, brakes, and electrical/electronic systems.
3. Business Management and Administrative Services: A "bundle" of certifications showing digital literacy, such as the Microsoft Office Specialist (including Excel, PowerPoint and Word)
4. Cabinetmaking, Carpentry: NCCER Carpentry/Cabinetmaking certifications
5. Cosmetology: Arizona Board of Cosmetology/ Licensed Aesthetician
6. Dental Assisting: Dental Assisting National Board certification
7. Diesel Engine Repair: ASE Medium/Heavy Truck Student Certification
8. Early Childhood Education: Child Development Associate Credential
9. Education Professions: Certifications required to work as a para-professional
10. Electronic Technologies: FCC License
11. Emergency Medical Services: National Registry of Emergency Medical Technicians/ EMT/ EMR or State of Arizona certification
12. HVAC: NCCER HVAC certifications
13. Heavy Equipment Operators: NCCER Heavy Equipment Operators
14. Laboratory Assisting: American Society of Phlebotomy Technicians or National Phlebotomy Association/Certified Phlebotomy Technician
15. Law, Public Safety and Security: Arizona Department of Public Safety/Security Guard Certificate
16. Mechanical Drafting: Autodesk Certified user, including AutoCAD
17. Nursing Services: CNA or LNA
18. Pharmacy Support Services; Pharmacy Technician Certification Board/ Certified Pharmacy Technicians
19. Therapeutic Massage: Registered Massage Therapist; Arizona State Board of Massage Therapy/ Licensed Massage Therapist
20. Welding Technologies: American Welding Society Certification (AWSC)



Graduation Rate – 20%

- Schools can earn up to 10 pts
- The more students you graduate on time the more points you earn

Grad Rate	Points
4 year	10
5 year	8
6 year	5
7 year	1

How are We Performing...

- By
 - District
 - School
 - Grade Level
 - Subject

AzMERIT ELA

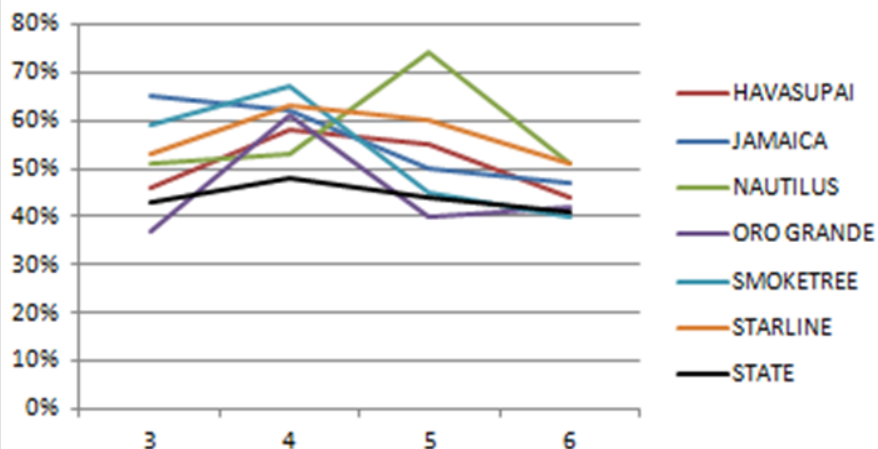
Spring 2015			Spring 2016				Spring 2017			
Grade	Number of Students Tested	Percent Passing	Grade	Number of Students Tested	Percent Passing	Percent Change	Grade	Number of Students Tested	Percent Passing	Percent Change
3	369	52%	3	394	52%	0	3	404	54%	+2
4	395	48%	4	381	50%	+2	4	410	61%	+11
5	440	42%	5	392	55%	+13	5	381	54%	-1
6	435	39%	6	429	50%	+11	6	401	46%	-4
7	398	34%	7	442	37%	+3	7	458	44%	+7
8	431	42%	8	391	31%	-11	8	442	24%	-7
9	416	19%	9	479	35%	+16	9	408	36%	+1
10	395	27%	10	439	28%	+1	10	410	32%	+4
11	356	29%	11	411	33%	+4	11	380	24%	-9

AzMERIT Math

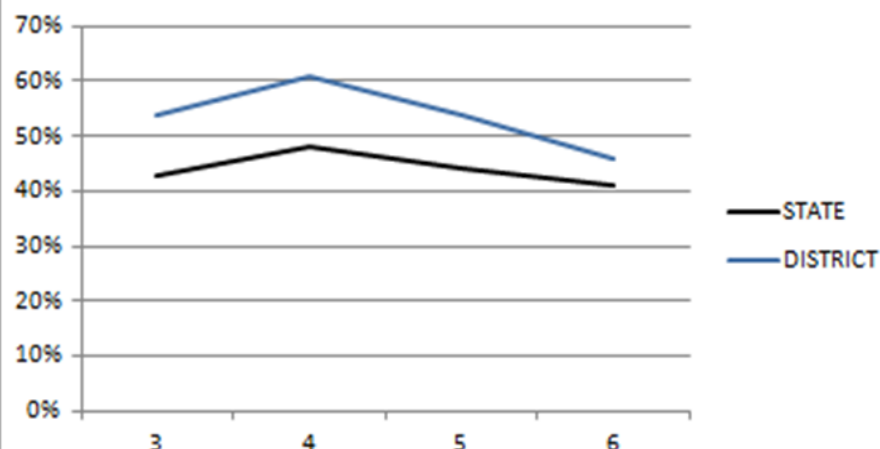
Spring 2015			Spring 2016				Spring 2017			
Grade	Number of Students Tested	Percent Passing	Grade	Number of Students Tested	Percent Passing	Percent Change	Grade	Number of Students Tested	Percent Passing	Percent Change
3	371	61%	3	394	59%	-2	3	404	60%	+1
4	397	48%	4	381	54%	+6	4	411	65%	+11
5	440	52%	5	392	64%	+12	5	381	55%	-9
6	436	34%	6	432	52%	+18	6	404	54%	+2
7	403	34%	7	448	32%	-2	7	459	35%	+3
8	436	39%	8	314	23%	-16	8	347	6%	-17
Algebra I 8	84	99%	Algebra I 8	80	96%	-2	Algebra I 8	93	96%	+0
Algebra I (HS)	287	21%	Algebra I (HS)	417	27%	+6	Algebra I (HS)	385	26%	-1
Geometry	372	33%	Geometry	397	39%	+6	Geometry	366	35%	-4
Algebra II	330	30%	Algebra II	413	35%	+5	Algebra II	367	38%	+3

AzMerit 2016-2017

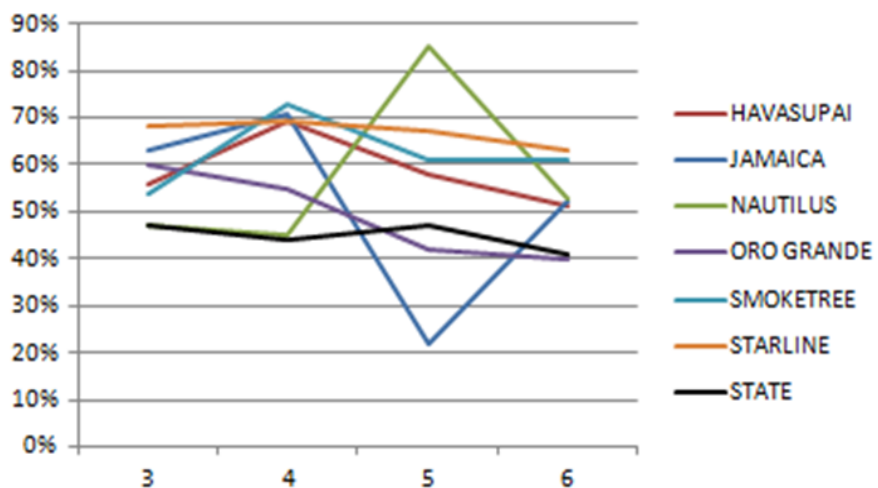
Percentage Passing - ELA



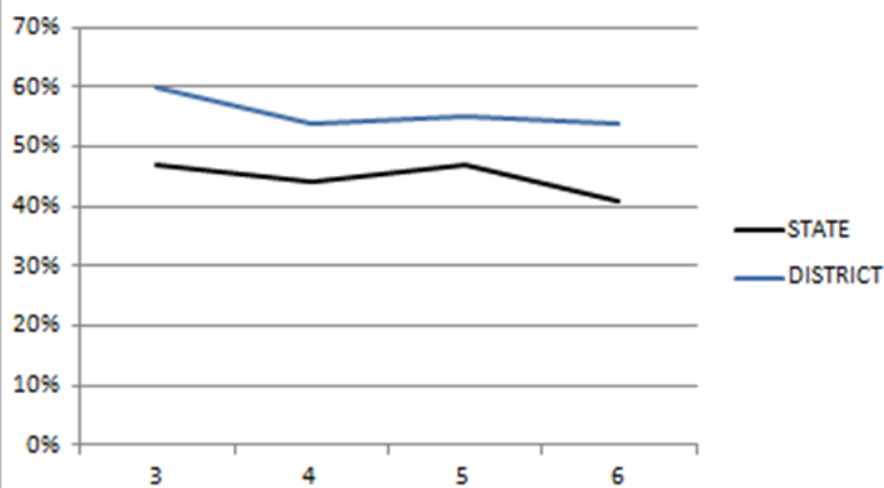
Percentage Passing - ELA



Percentage Passing - Math

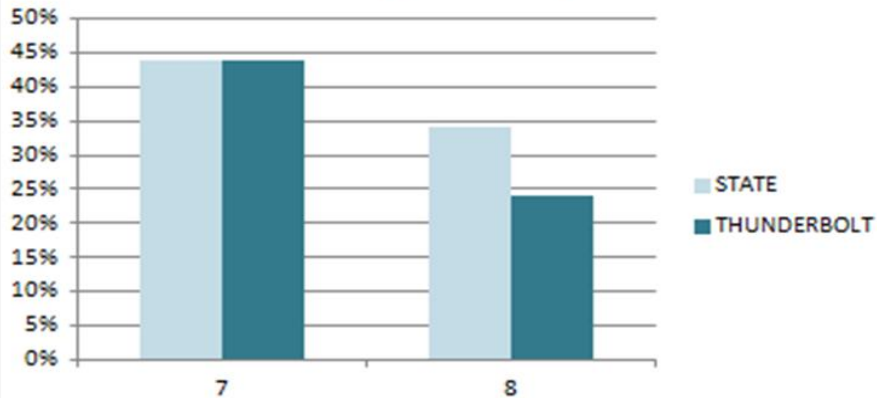


Percentage Passing - Math

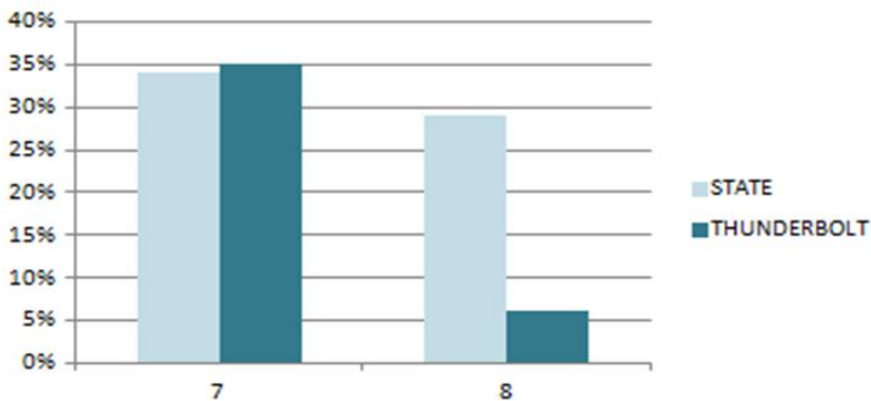


2017 Grades 7-8

Percentage Passing - ELA



Percentage Passing - Math



THUNDERBOLT

Grade	ELA		MATH	
	Student	Percent	Student	Percent
	Count	Passing	Count	Passing
7	458	44%	459	35%
8	442	24%	347	6%

STATE

Grade	ELA		MATH	
	Student	Percent	Student	Percent
	Count	Passing	Count	Passing
7	85088	44%	82731	34%
8	84220	34%	71350	29%

Overall % Proficient

TB 32.2%

AZ 35.2%

Local District / Charter Comparisons

Percent Proficient

English Language Arts				
Young Scholars	ELA	3	59	43.6
Desert Star	ELA	3	56	
Havasu	ELA	3	54	
Topock	ELA	3	47	
MAES	ELA	3	40	
Kingman	ELA	3	38	
Mohave Valley	ELA	3	32	
Bullhead	ELA	3	23	

Topock	ELA	4	75	53.3
MAES	ELA	4	66	
Havasu	ELA	4	60	
Desert Star	ELA	4	50	
Mohave Valley	ELA	4	47	
Young Scholars	ELA	4	47	
Bullhead	ELA	4	44	
Kingman	ELA	4	38	

Havasu	ELA	5	54	40
MAES	ELA	5	48	
Mohave Valley	ELA	5	42	
Young Scholars	ELA	5	41	
Kingman	ELA	5	39	
Desert Star	ELA	5	37	
Bullhead	ELA	5	34	
Topock	ELA	5	25	

Havasu	ELA	6	46	35.6
Young Scholars	ELA	6	46	
Mohave Valley	ELA	6	40	
MALC	ELA	6	39	
Topock	ELA	6	38	
Desert Star	ELA	6	32	
Kingman	ELA	6	25	
Bullhead	ELA	6	19	

MALC	ELA	7	63	
Havasu	ELA	7	44	
Mohave Valley	ELA	7	43	
Young Scholars	ELA	7	43	
Desert Star	ELA	7	33	
Bullhead	ELA	7	32	
Kingman	ELA	7	29	

MALC	ELA	8	43	
Young Scholars	ELA	8	29	
Mohave Valley	ELA	8	26	
Havasu	ELA	8	24	
Bullhead	ELA	8	23	
Kingman	ELA	8	18	
Desert Star	ELA	8	18	

Math					
Topock	Math	3	✓	84	54.75
Desert Star	Math	3	✓	69	
Havasu	Math	3	✓	60	
MAES	Math	3	✓	58	
Young Scholars	Math	3	✓	53	
Mohave Valley	Math	3	✓	43	
Kingman	Math	3	✓	42	
Bullhead	Math	3	✓	29	
Topock	Math	4	✓	66	58.1
Havasu	Math	4	✓	65	
MAES	Math	4	✓	63	
Young Scholars	Math	4	✓	51	
Bullhead	Math	4	✓	48	
Mohave Valley	Math	4	✓	45	
Kingman	Math	4	✓	41	
Desert Star	Math	4	✓	41	
Havasu	Math	5	✓	56	42.8
MAES	Math	5	✓	51	
Mohave Valley	Math	5	✓	50	
Kingman	Math	5	✓	43	
Desert Star	Math	5	✓	43	
Bullhead	Math	5	✓	34	
Topock	Math	5	✓	33	
Young Scholars	Math	5	✓	33	
Bullhead	Math	6	✓	*	45.7
Havasu	Math	6	✓	55	
Young Scholars	Math	6	✓	54	
MALC	Math	6	✓	51	
Desert Star	Math	6	✓	42	
Kingman	Math	6	✓	33	
Bullhead	Math	6	✓	30	
Mohave Valley	Math	6	✓	30	
Topock	Math	6	✓	25	

Local Comparisons

Percent Proficient

MALC	Math	7	✓	51
Havasu	Math	7	✓	36
Mohave Valley	Math	7	✓	31
Bullhead	Math	7	✓	27
Desert Star	Math	7	✓	25
Young Scholars	Math	7	✓	23
Kingman	Math	7	✓	17

MALC	Math	8	✓	51
Desert Star	Math	8	✓	27
Mohave Valley	Math	8	✓	22
Young Scholars	Math	8	✓	17
Bullhead	Math	8	✓	15
Havasu	Math	8	✓	7
Kingman	Math	8	✓	5

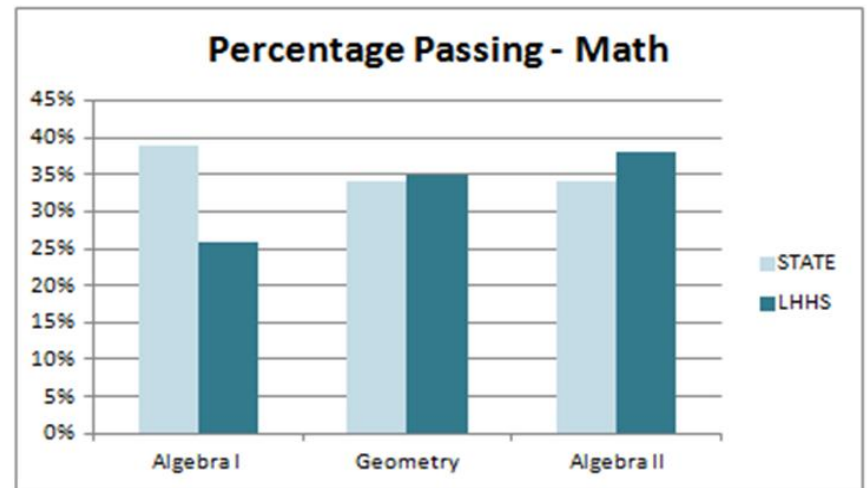
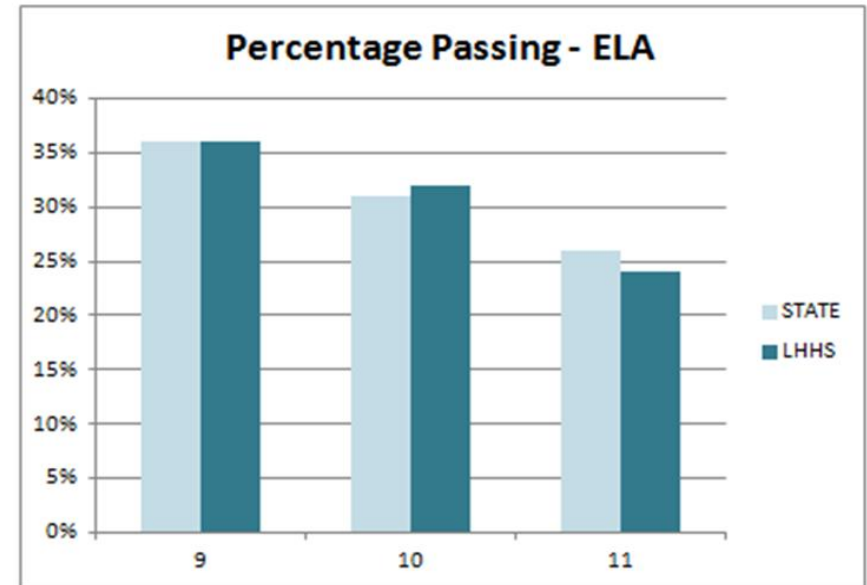
Havasu	Math	9	✓	96
Mohave Valley	Math	9	✓	89
Bullhead	Math	9	✓	85
Kingman	Math	9	✓	33

2017

Grades 9-11

LHHS	ELA			MATH	
	<u>Student</u>	<u>Percent</u>	<u>Count</u>	<u>Student</u>	<u>Percent</u>
	<u>Count</u>	<u>Passing</u>		<u>Count</u>	<u>Passing</u>
				93	96
9	408	36%		385	26%
10	410	32%		366	35%
11	380	24%		367	38%

STATE	ELA			MATH	
	<u>Student</u>	<u>Percent</u>	<u>Count</u>	<u>Student</u>	<u>Percent</u>
	<u>Count</u>	<u>Passing</u>		<u>Count</u>	<u>Passing</u>
Algebra I Tbolt					
Algebra I	80659	36%		82510	39%
Geometr	74036	31%		71296	34%
Algebra I	68389	26%		62459	34%



Overall % Proficient
LHHS 32.2%
AZ 33.3%

Local District / Charter Comparisons

High School Percent Proficient

Havasu	ELA	9	36
Telesis	ELA	9	32
CRUHSD	ELA	9	27
Kingman	ELA	9	26
Parker	ELA	9	16

Havasu	Algebra	I	40
Telesis	Algebra	I	29
Kingman	Algebra	I	21
Parker	Algebra	I	16
CRUHSD	Algebra	I	16

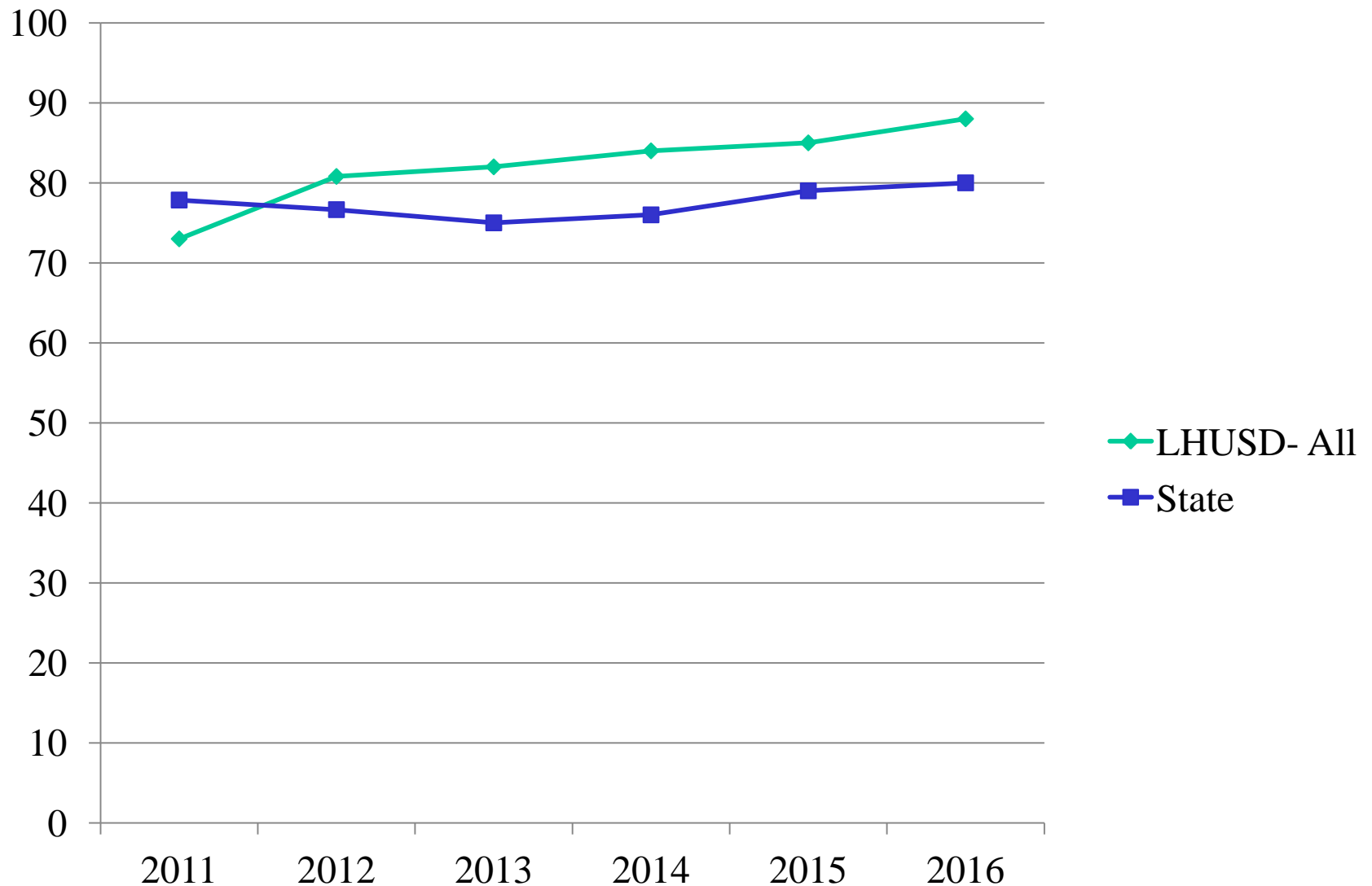
Havasu	ELA	10	32
CRUHSD	ELA	10	30
Parker	ELA	10	22
Kingman	ELA	10	21
Telesis	ELA	10	8

Telesis	Geometry		52
Havasu	Geometry		35
Kingman	Geometry		28
Parker	Geometry		10
CRUHSD	Geometry		10

Telesis	ELA	11	27
Havasu	ELA	11	24
CRUHSD	ELA	11	19
Kingman	ELA	11	19
Parker	ELA	11	16

Telesis	Algebra	II	49
Havasu	Algebra	II	38
Kingman	Algebra	II	26
Parker	Algebra	II	22
CRUHSD	Algebra	II	16

Graduation Rate 2011 to 2016



LHUSD A-F PROFILE 2016-17

School	Grade	Percentage	Range for Grade
Havasupai	B	77.4%	74 – 85 %
Jamaica	B	77 %	74 – 85 %
Nautilus	B	80 %	74 – 85 %
Oro Grande	C	70%	62 – 73%
Smoketree	B	78%	74 – 85 %
Starline	A	88%	86 – 100%
Thunderbolt	F	47%	49% and below
Lake Havasu HS	C	68%	56 – 70%

Lake Havasu High School

Category	Weight	Points
Proficiency	30%	15.09
Growth	20%	12.91
EL Proficiency and Growth	10%	NA
Graduation Rate	20%	20.00
College and Career Ready - Self-Report Scaled Score	20%	13.47
SPED Bonus Points		0.00
All Students Total Points		61.46
Total Points Eligible		90.00
Percentage Earned		68.00%
Percent Tested*		87.89%
A-F Letter Grade		C

Proficiency

ELA Grade 9	57.15%
ELA Grade 10	45.78%
ELA Grade 11	40.44%
Algebra I	41.68%
Algebra II	54.31%
Geometry	56.37%
Science Grade 10	57.91%
MSAA ELA	
MSAA Math	
Percent Proficient All Students	50.28%
Total Proficiency Points	15.09

Thunderbolt Middle School

Category	Weight	Points
Proficiency/Stability Proficiency*	30%	16.02
Growth	50%	19.57
EL Proficiency and Growth	10%	NA
Acceleration / Readiness	10%	5.00
SPED Bonus Points		2.00
All Students Total Points		42.59
Total Points Eligible		90.00
Percentage Earned		47.00%
Percent Tested**		95.41%
A-F Letter Grade		F

Proficiency

Proficiency		30% [*]	View Data
Grade	ELA	Math	Science
3			
4			
5			
6			
7	58.25%	52.40%	
8	40.12%	37.73%	78.73%
9			
Total Proficiency Points			16.00

Jamaica Elementary School

Category	Weight	Points
Proficiency/Stability Proficiency*	30%	23.73
Growth	50%	33.40
EL Proficiency and Growth	10%	NA
Acceleration / Readiness	10%	10.00
SPED Bonus Points		2.00
All Students Total Points		69.13
Total Points Eligible		90.00
Percentage Earned		77.00%
Percent Tested**		97.64%
A-F Letter Grade		B

Smoketree Elementary School

Category	Weight	Points
Proficiency/Stability Proficiency*	30%	23.40
Growth	50%	39.19
EL Proficiency and Growth	10%	NA
Acceleration / Readiness	10%	6.00
SPED Bonus Points		2.00
All Students Total Points		70.59
Total Points Eligible		90.00
Percentage Earned		78.00%
Percent Tested**		97.03%
A-F Letter Grade		B

Starline Elementary School

Category	Weight	Points
Proficiency/Stability Proficiency*	30%	25.51
Growth	50%	41.81
EL Proficiency and Growth	10%	NA
Acceleration / Readiness	10%	10.00
SPED Bonus Points		2.00
All Students Total Points		79.32
Total Points Eligible		90.00
Percentage Earned		88.00%
Percent Tested**		95.71%
A-F Letter Grade		A

Oro Grande Elementary School

Category	Weight	Points
Proficiency/Stability Proficiency*	30%	21.14
Growth	50%	33.98
EL Proficiency and Growth	10%	NA
Acceleration / Readiness	10%	6.00
SPED Bonus Points		2.00
All Students Total Points		63.12
Total Points Eligible		90.00
Percentage Earned		70.00%
Percent Tested**		96.80%
A-F Letter Grade		C

Nautilus Elementary School

Category	Weight	Points
Proficiency/Stability Proficiency*	30%	24.33
Growth	50%	37.75
EL Proficiency and Growth	10%	NA
Acceleration / Readiness	10%	8.00
SPED Bonus Points		2.00
All Students Total Points		72.08
Total Points Eligible		90.00
Percentage Earned		80.00%
Percent Tested**		96.90%
A-F Letter Grade		B

Havasupai Elementary School

Category	Weight	Points
Proficiency/Stability Proficiency*	30%	22.46
Growth	50%	41.97
EL Proficiency and Growth	10%	7.00
Acceleration / Readiness	10%	6.00
SPED Bonus Points		0.00
All Students Total Points		77.43
Total Points Eligible		100.00
Percentage Earned		77.00%
Percent Tested**		95.38%
A-F Letter Grade		B

October 6, 2017

Re: Guidance Document for Posting of Preliminary School Year 2016-2017 Letter Grades

Dear Colleague:

On Monday, October 9, 2017, the State Board of Education (SBE) will post preliminary school year 2016-2017 letter grades on its website. This guidance letter provides further information for schools on the categories of postings and next steps for the future issuance of final letter grades.

Categories of Postings of Preliminary Letter Grades

Category	Designation
A, B, C, D, or F	School has received a preliminary letter grade based on initial calculations using the currently adopted methodologies.

Next Steps

Technical Changes - A number of factors have led the SBE to post preliminary letter grades. Since the adoption of the A-F School Accountability Plan, the SBE has determined the federal Every Student Succeeds Act requires revisions to the Plan, including the removal of science data from proficiency measures. Also, the College and Career Readiness Indicator must be revised to include *all* seniors, not just graduating seniors. Most importantly, the 2016-2017 A-F Accountability Plan is a new plan that must include additional time for field validation. In this case, it is entirely appropriate for the field to conduct a data review before final school year 2016-2017 letter grades are issued.

Public Comment – To capture feedback from the field, the SBE staff will host a series of open houses through November 6th at its offices to gather public input for potential revisions to final letter grades for school year 2016-2017 and in upcoming school years.

The open houses will be held at the State Board of Education administrative offices at 1700 W Washington, Suite 300 on the following dates and times:

- October 10: Noon - 5:00 P.M.
- October 12: Noon - 5:00 P.M.
- October 13: Noon - 5:00 P.M.
- October 16: 9:00 A.M. – Noon
- October 17: 9:00 A.M. – Noon
- October 24: 9:00 A.M. – Noon
- October 27: 9:00 A.M. – Noon
- October 30: 9:00 A.M. – Noon
- October 31: 9:00 A.M. – Noon
- November 6: Noon - 5:00 P.M.

Interested individuals may also provide input through the SBE's inbox at inbox@azsbe.az.gov. A public survey will be available Monday to provide an additional opportunity to submit feedback.

Technical Advisory Committee (TAC) – The SBE will be assisted in its review process by a new standing Technical Advisory Committee. Members of the committee will report directly to the SBE and shall have expertise in data analysis related to K-12 student achievement from all types of school configurations. These members will not have previously served with the Accountability Advisory Group (AAG).

In the next three months, the Board will engage in an iterative process with the TAC to conduct independent analyses of data, based on public input, for potential revisions to the A-F Accountability Plan. At the December Board meeting, the SBE will provide policy and technical guidance to the TAC for modeling needed to finalize Plan revisions. Final letter grades for school year 2016-2017 will be subsequently issued and a timeline for appeals of the final letter grades will be announced.

Next Steps

- Focus on Phonics K – 3
- Align Mathematics Standards 6-8
- Review Textbook Adoptions 9-12
- Continue Comprehensive Needs Analysis and Prioritization
- Continue Recruit and Retain Quality Teachers