

Name _____

Period _____

Mississippi Biology I Workshop

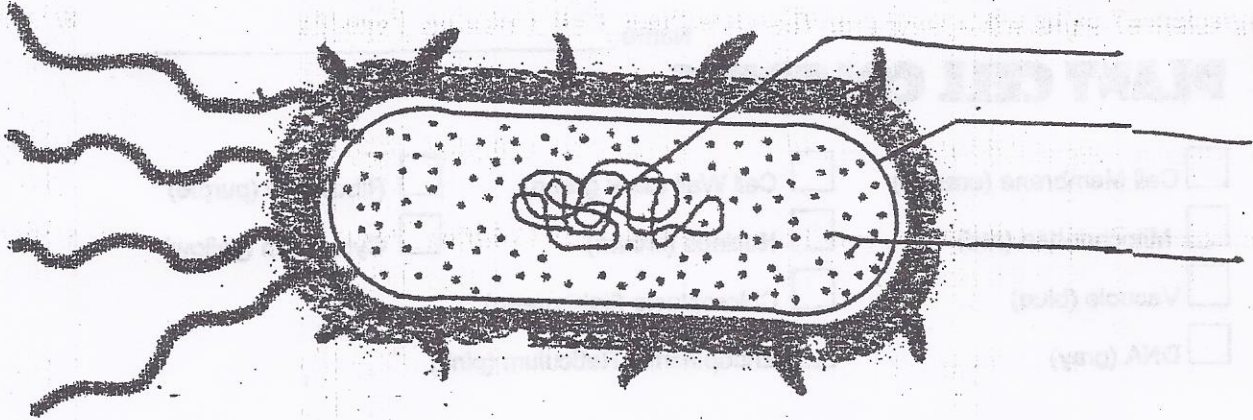
Harcourt Assessment, Inc.

Fall 2004

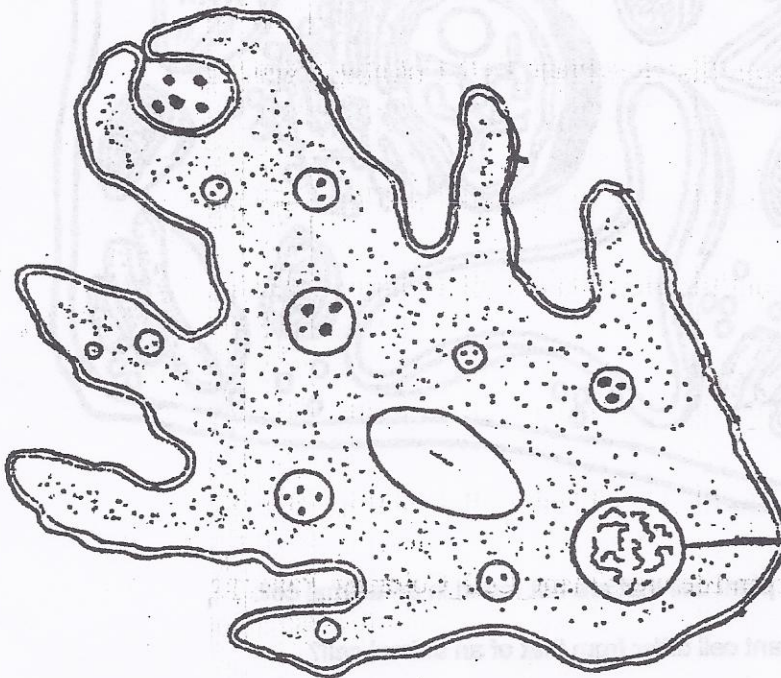
5

Cell Coloring Pages

Label:



Type of Cell _____



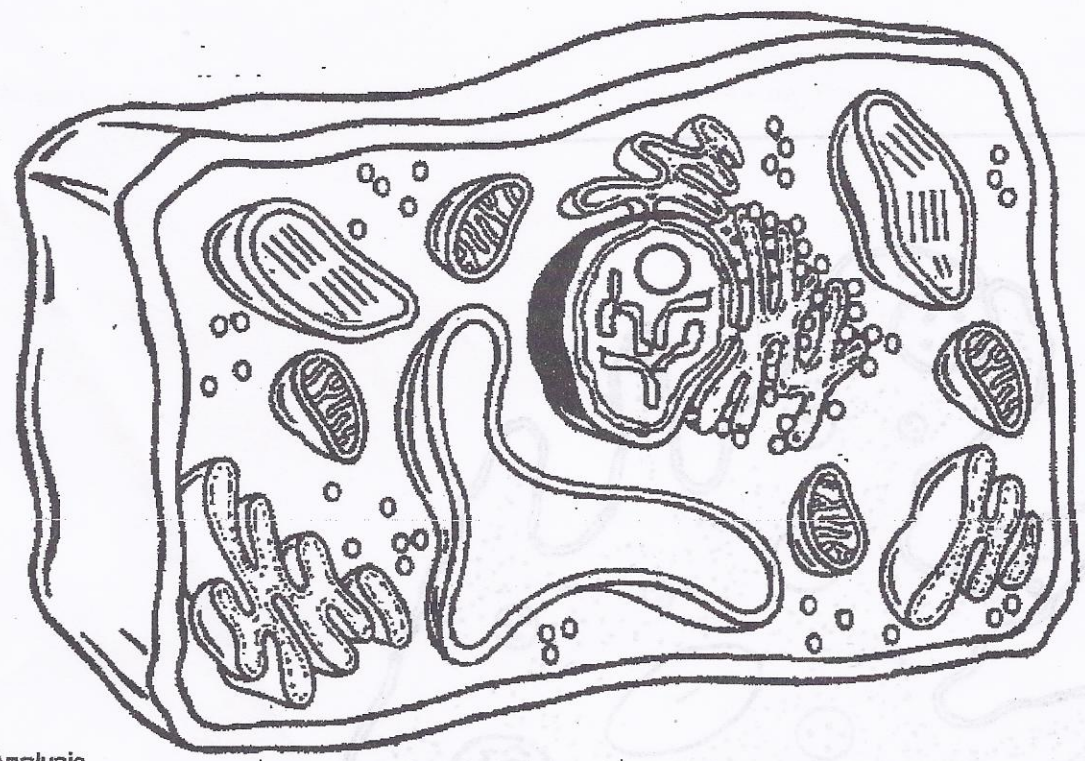
Type of Cell _____

Type of cell _____

Name _____

PLANT CELL COLORING

- Cell Membrane (orange)
- Cell Wall (dark green)
- Ribosome (purple)
- Mitochondria (red)
- Nucleus (brown)
- Cytoplasm (yellow)
- Vacuole (blue)
- Chloroplasts (light green)
- DNA (gray)
- Endoplasmic Reticulum (pink)



Analysis

1. Name two things found in a plant cell that are not found in an animal cell:
2. How does the shape of a plant cell differ from that of an animal cell?
3. What is the function of the chloroplasts?
4. What is the function of the vacuole?

Type of cell _____

Animal Cell Coloring

Name _____

I. Directions: Color each part of the cell its designated color.

Cell Membrane(light brown)

Cytoplasm (light yellow)

Nucleoplasm (pink)

Nuclear Membrane(dark brown)

Nucleolus (black)

Golgi Apparatus (pink)

Flagella (red/blue striped)

Rough Endoplasmic Reticulum (dark blue)

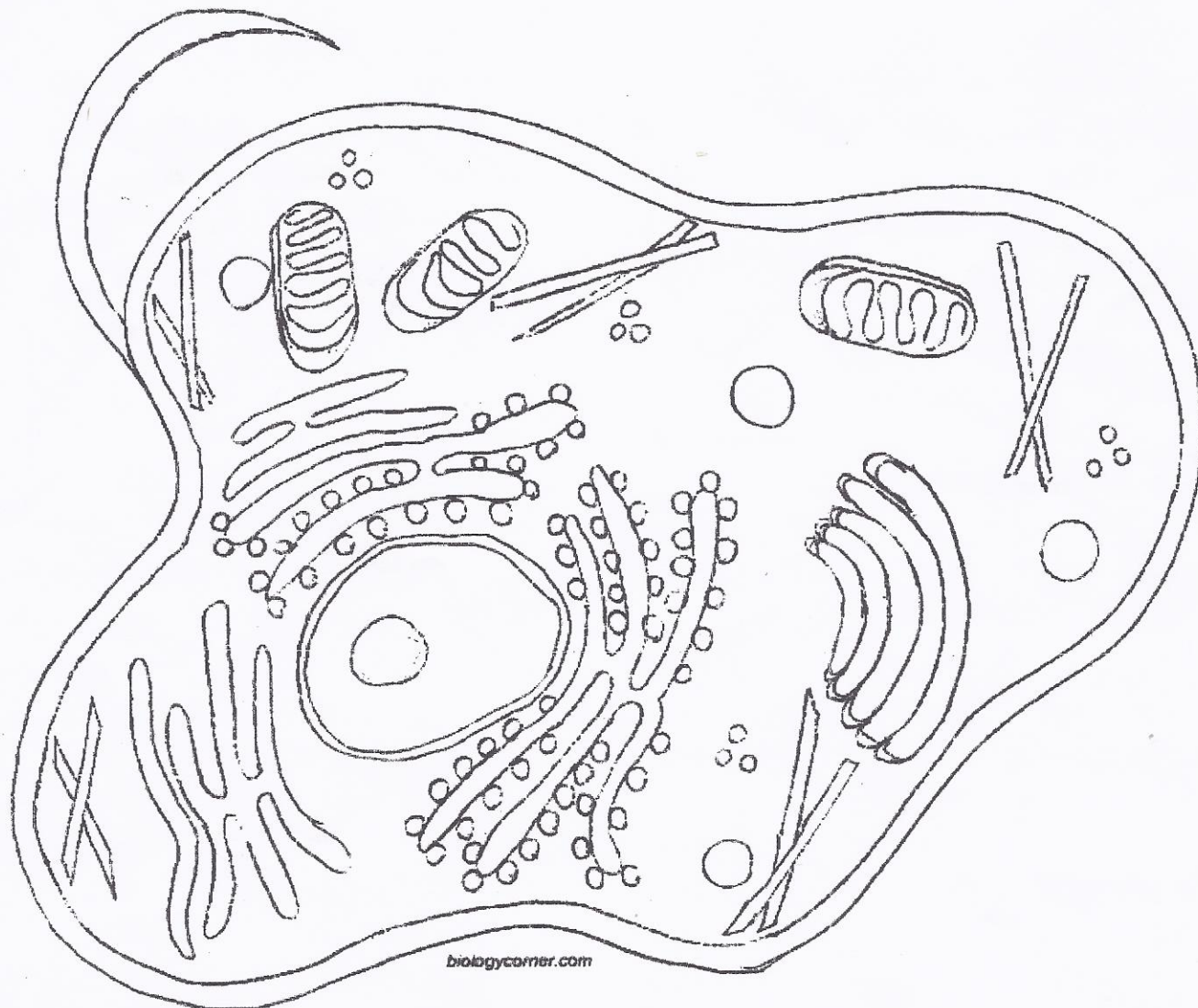
Smooth Endoplasmic Reticulum(light blue)

Mitochondria (orange)

Lysosome (purple)

Microtubules (dark green)

Ribosome (red)



II. Briefly describe the function of the cell parts.

1. Cell membrane _____
2. Endoplasmic Reticulum _____
3. Ribosome _____
4. Golgi Apparatus _____
5. Lysosome _____
6. Microtubule _____
7. Mitochondria _____
8. Nucleus _____