

Drivers Education

Signs

Signals

Roadway Markings

Signs





Signs

What do they do?

- Regulate-tell you what/what not to do
- Warn
- Inform and guide
- Historic, cultural, and recreational signs
- Motorist service signs
- Route signs

Signs



Signs with Special Shapes

- Stop sign: describe and explain



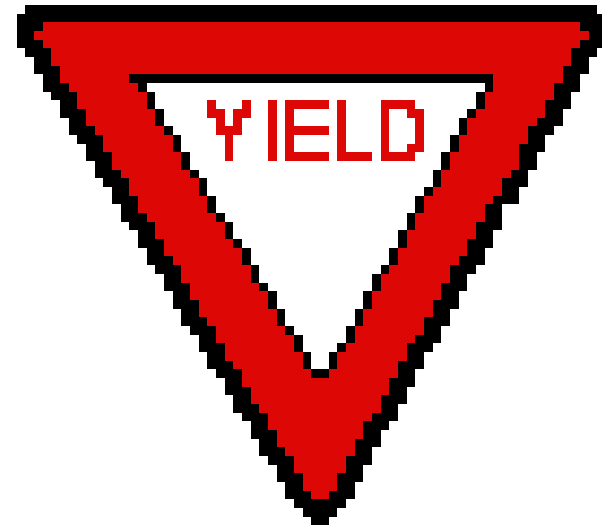
Signs with Special Shapes

- The octagonal shape is universal



Signs with Special Shapes

- Yield sign:
describe
and explain



Signs with Special Shapes

- School zone sign



- School crossing sign



These are the new crossing signs



What should you do when you see the school zone sign?

Slow down! A school is near.

Always watch for children



Hunter/Thinkstock

Signs with Special Shapes

- Railroad crossing signs



You see this sign as you approach a railroad crossing.

Railroad crossbuck sign

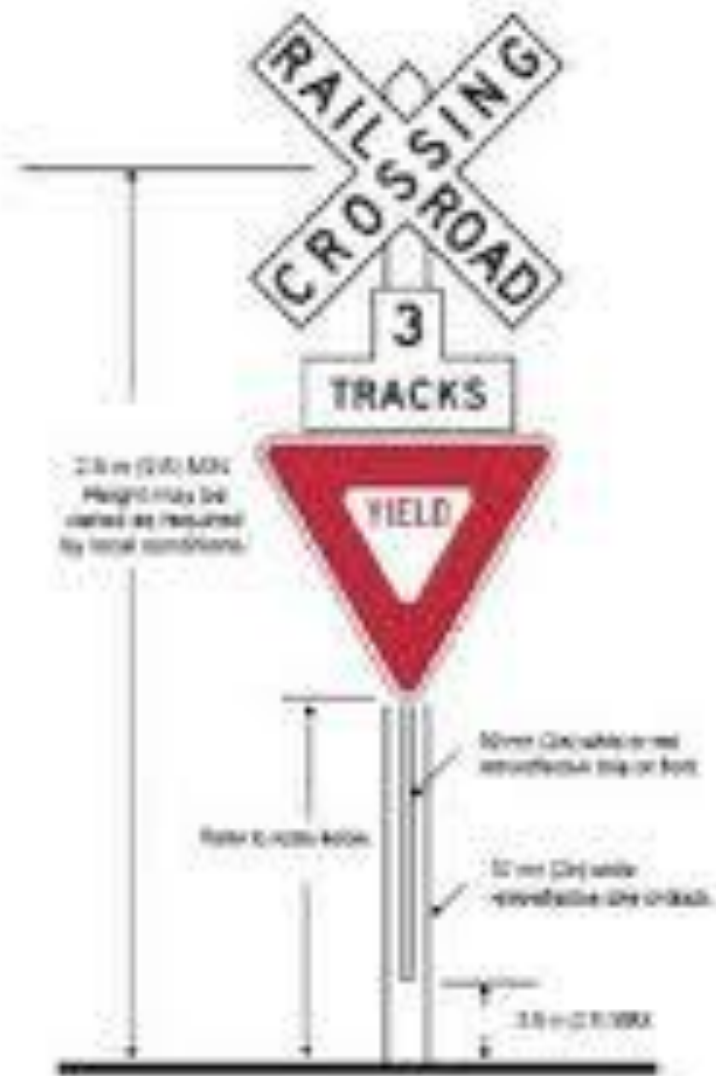
- This sign marks the railroad crossing.



A crossing that is used very rarely may be marked with an exempt sign.



What does exempt mean?



Signs with Special Shapes

- Where do we see this sign?



On which side of the road?



A View from the Edge

Signs with Special Shapes

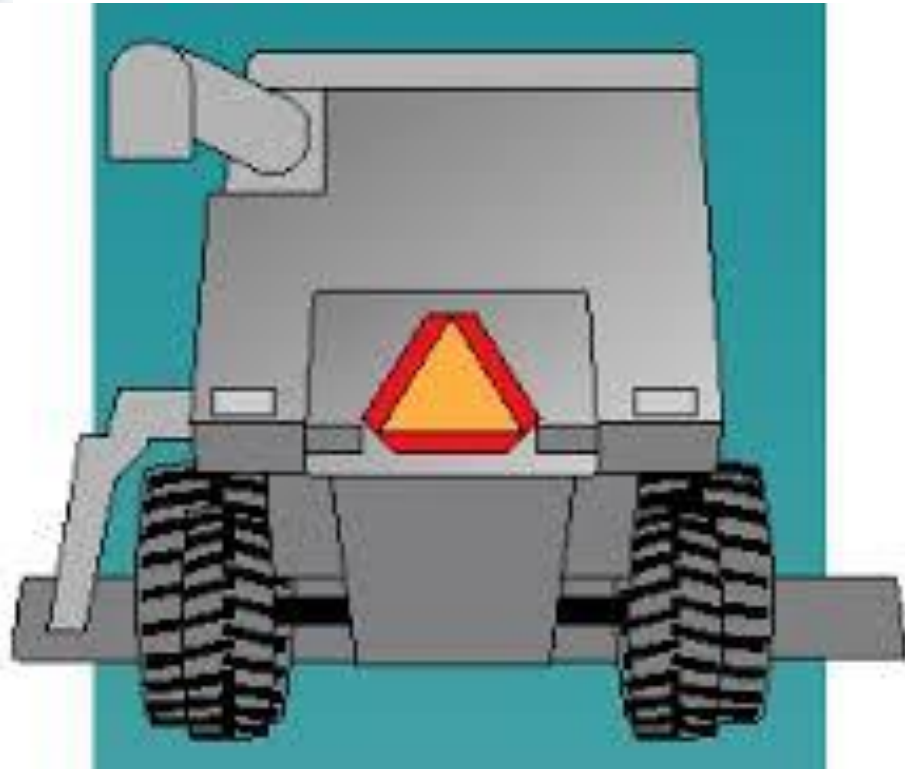
- What does this sign mean? Where do we see it?
- These vehicles travel at speeds of _____ mph or less.



Slow moving vehicle

- Found on farm implements
- They travel 30 mph or less
- Horse-drawn vehicles.





Warning Signs

Diamond-shaped signs



Warning Signs



Warning Signs



Warning Signs



Warning Signs



These are used in a sequence.

Warning Signs



Warning Signs

More yellow diamond-shaped signs.



Warning Signs

More yellow diamond-shaped signs.



Warning Signs

You see more yellow diamonds than any other shape.



Warning Signs

Even more diamond-shaped signs.



This is a critical one!

Warning Signs



Warning Signs

Yellow diamond-shaped signs.



Regulatory Signs

page 51



BASIC SPEED LAW

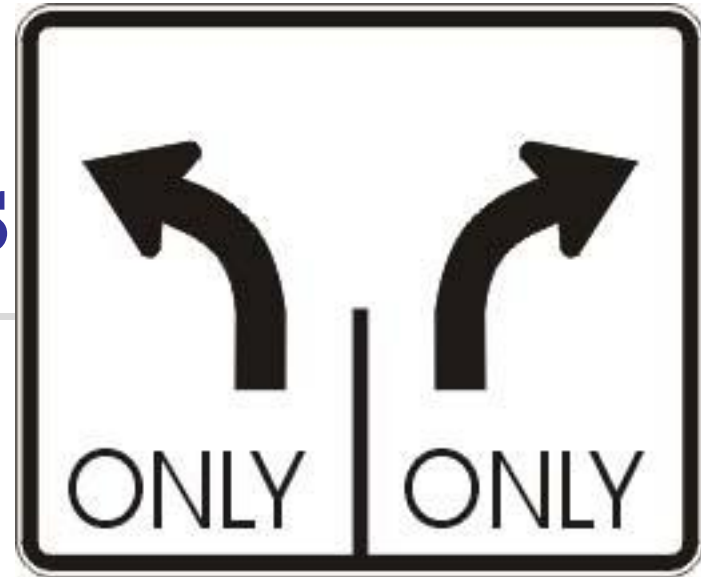


SPEED LIMITS ARE NOT ABSOLUTE. **THE BASIC SPEED LAW SUPERCEDES ANY SPEED LIMIT.** IT SAYS THAT YOU ALWAYS DRIVE AT A SPEED THAT IS SAFE FOR THE CONDITIONS.

Regulatory Signs



Regulatory Signs



Regulatory Signs



Which one is a warning sign?

Prohibitory regulation signs

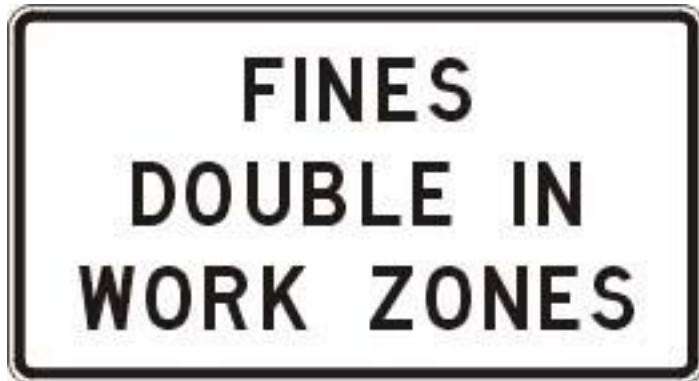


Prohibitory regulation signs

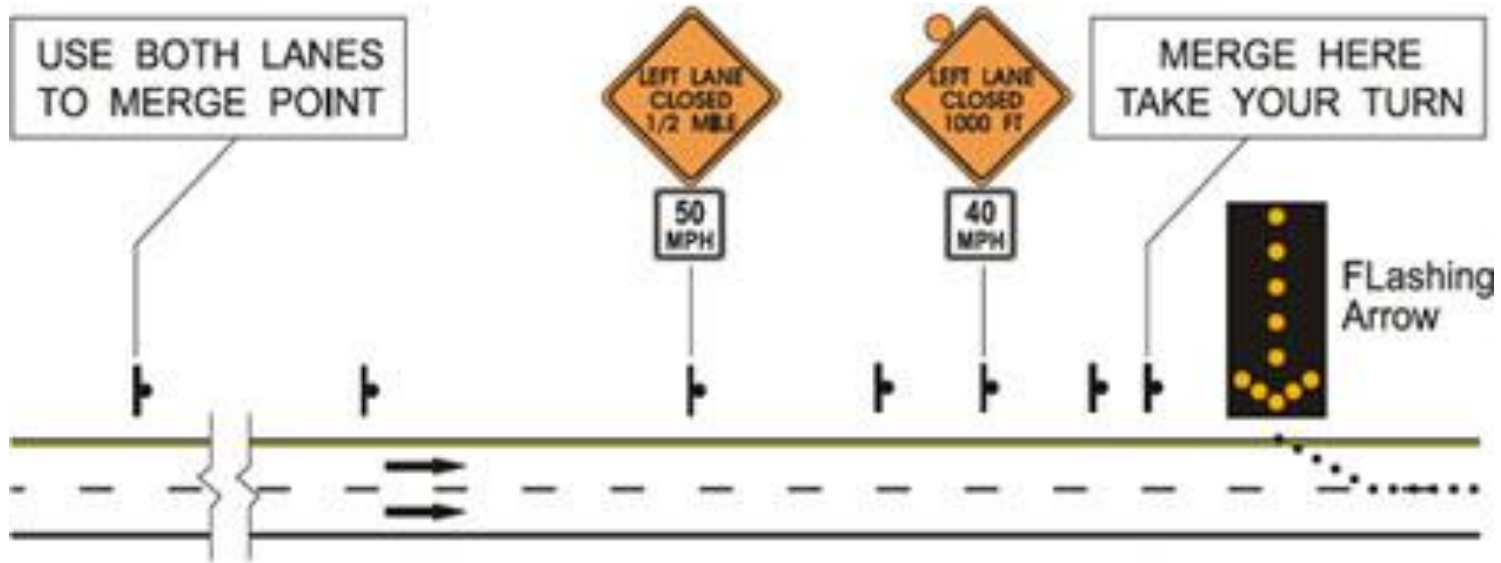


Construction zone signs

Most are warning; some are regulatory







Highway route signs

- Freeway route sign





Each/West
Route

North/South
Route



Interstate Route Marker

An east route is even-numbered. A north-south route is odd-numbered.



A three-figured route that starts with an odd number leads into a city.



A three-figured route that starts with an even number goes around a city.

Highway route signs

- U.S. Highway route



Highway route signs

- Minnesota highway



Highway route signs

- County road



Guidance and Information Signs



Motorist Services Signs



NEXT RIGHT

Historic and Recreational Signs

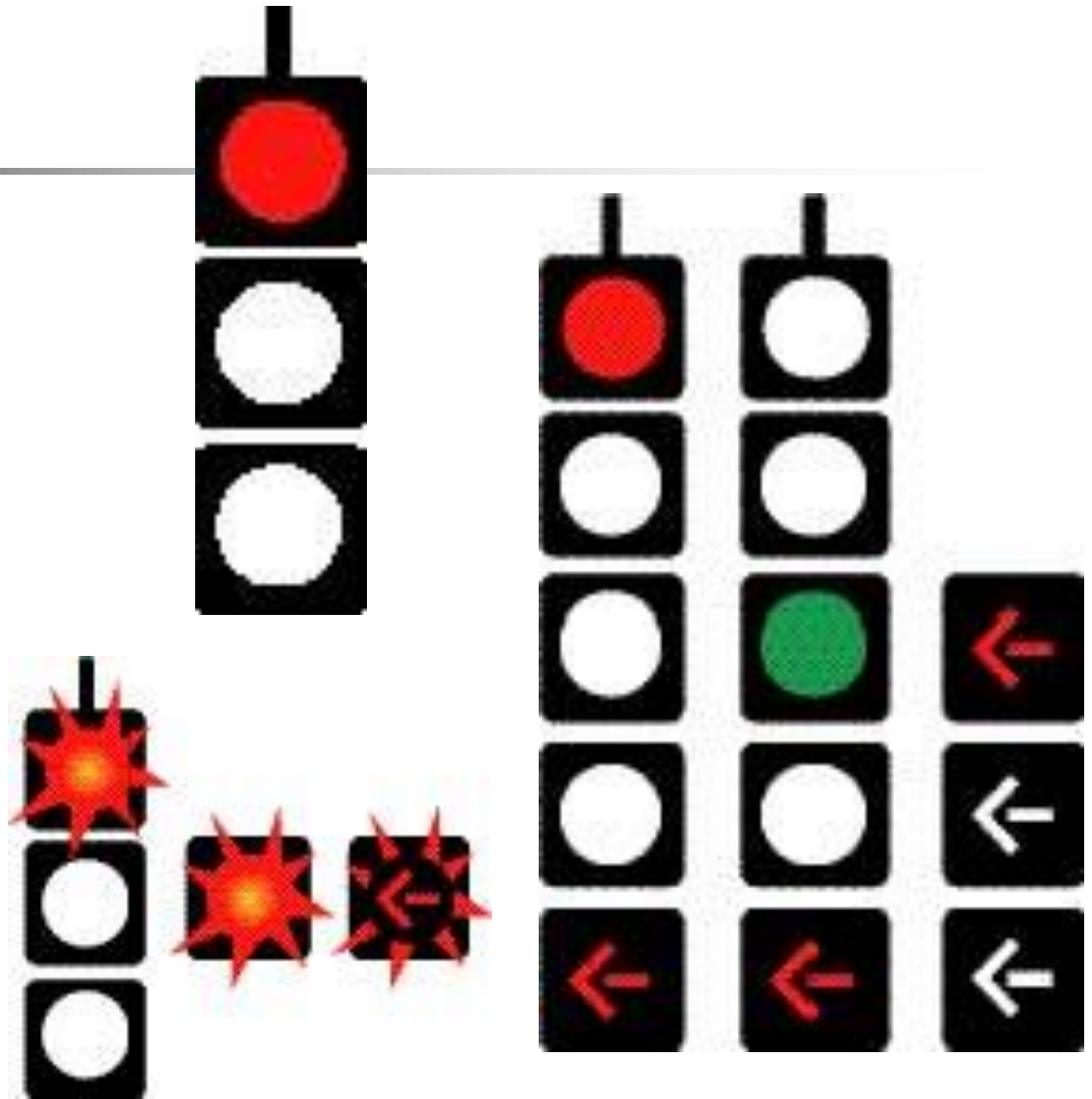


Historic and Recreational Signs



Signals

- RED MEANS STOP!
- Steady red
- Flashing red
- Red arrow
- STOP



Signals

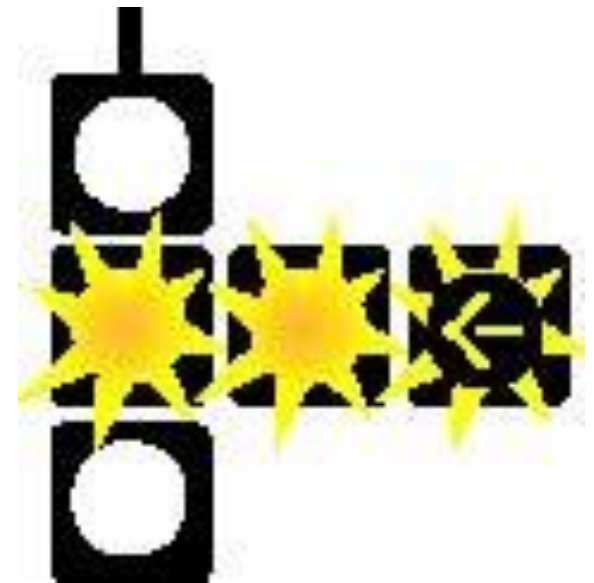
- RED
MEAN
STOP!



When any of these are lit, you do NOT begin to cross the intersection. If you are already in the intersection, continue across.

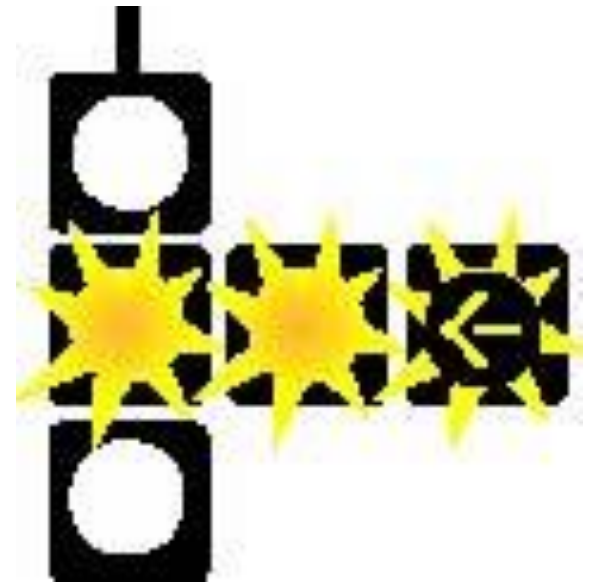
Signals

- Yellow means get ready to stop. It does **NOT** mean speed up and go through.



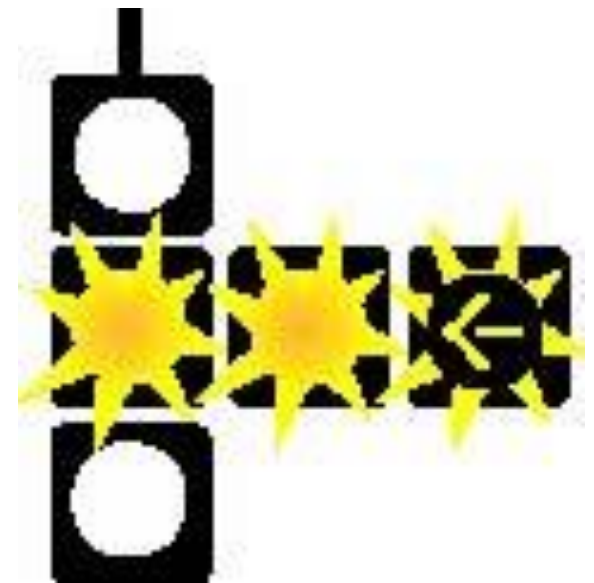
Signals

- **Approaching a yellow light, stop if safely possible.**



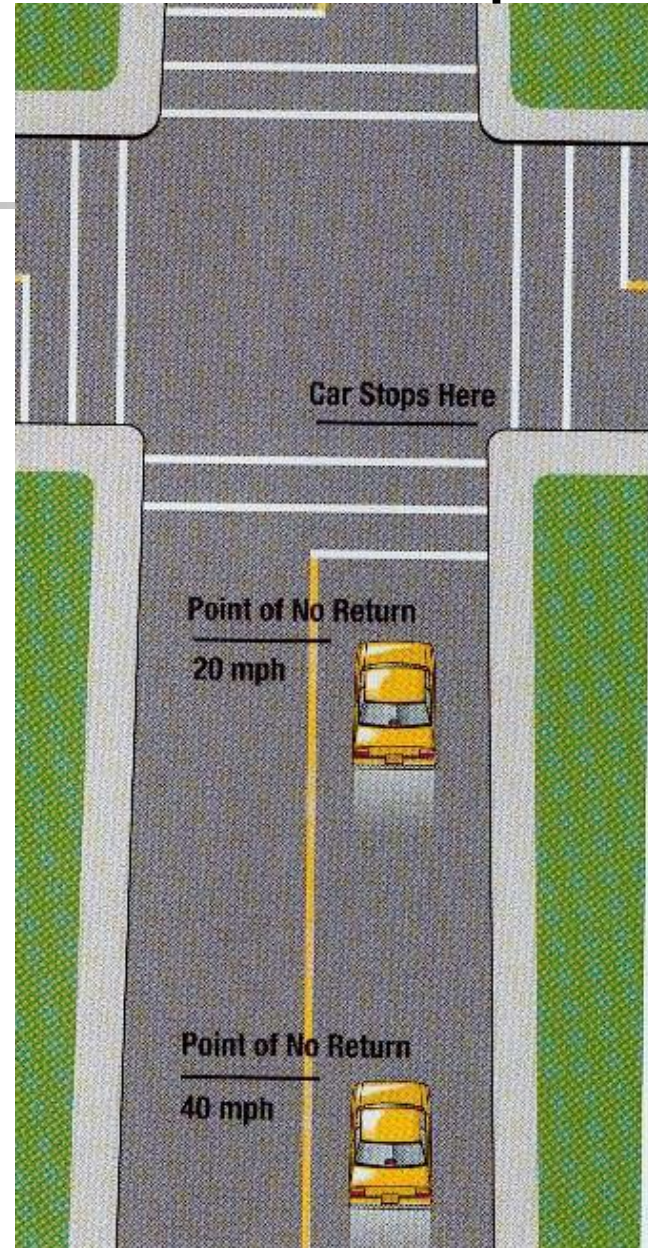
Signals

- “Point of no return” is spot beyond which you cannot stop safely.

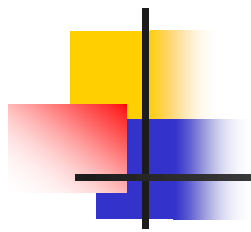


Point beyond which you cannot stop safely.

- **“Point of no return” is the spot beyond which you cannot stop safely.**



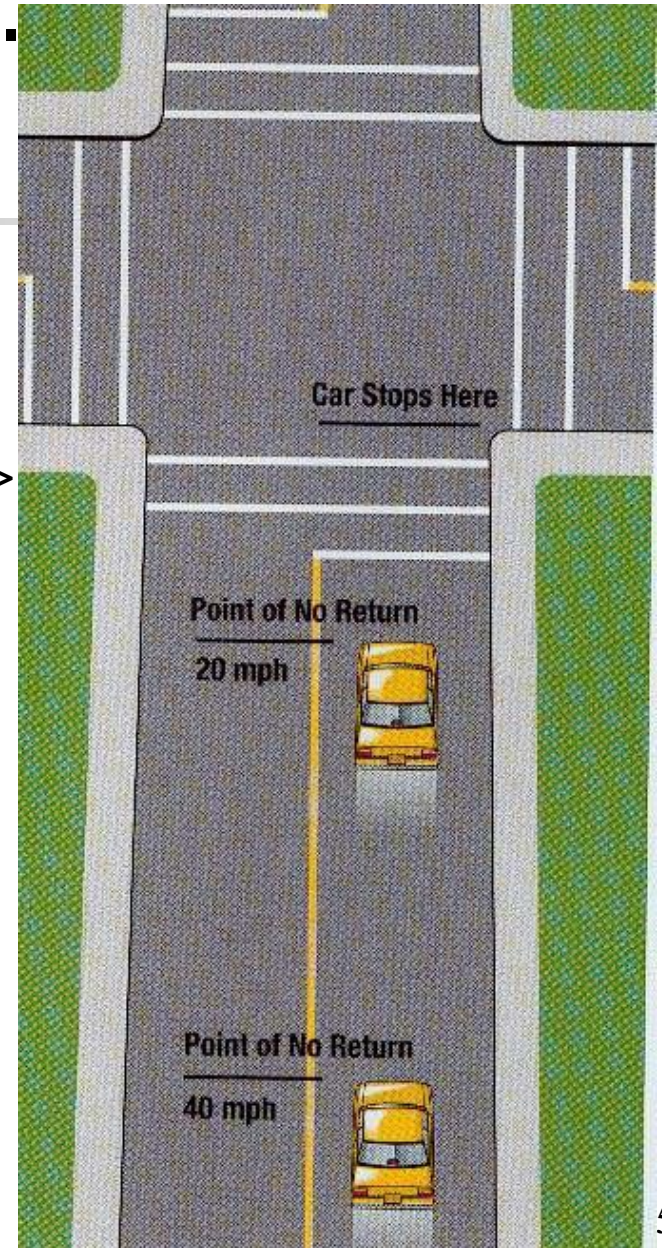
The greater your speed, the earlier you reach the point of no return.



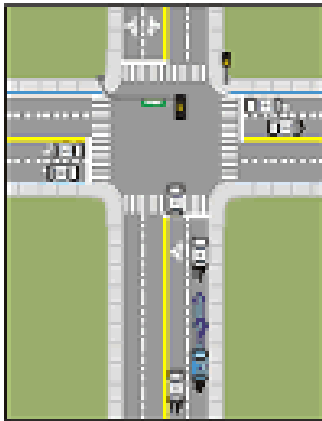
Stop here ----->

Break here at 20 mph ----->

Break here at 40 mph ----->



1.3 - Advance Traffic-Light Warning Signs



What it Does

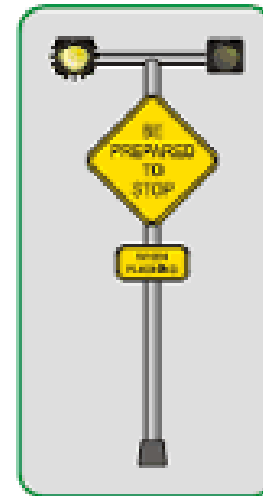
Warns drivers that the traffic light ahead will change from green to yellow

Applies To:

Deciding to stop or go through an intersection when the traffic light is about to turn red

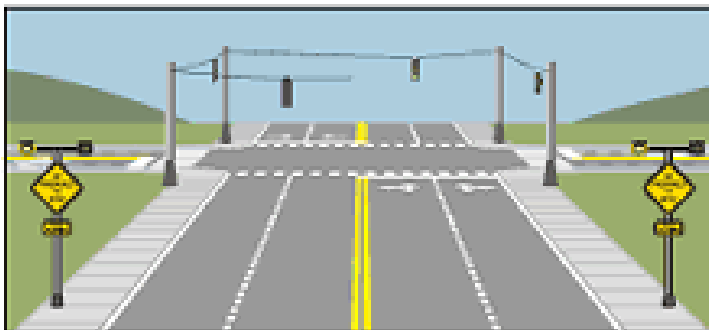
Description:

This yellow warning sign has two flashing signals that go on when a traffic light ahead is about to turn from green to yellow. The alternating lights continue flashing while the traffic light is yellow and red.



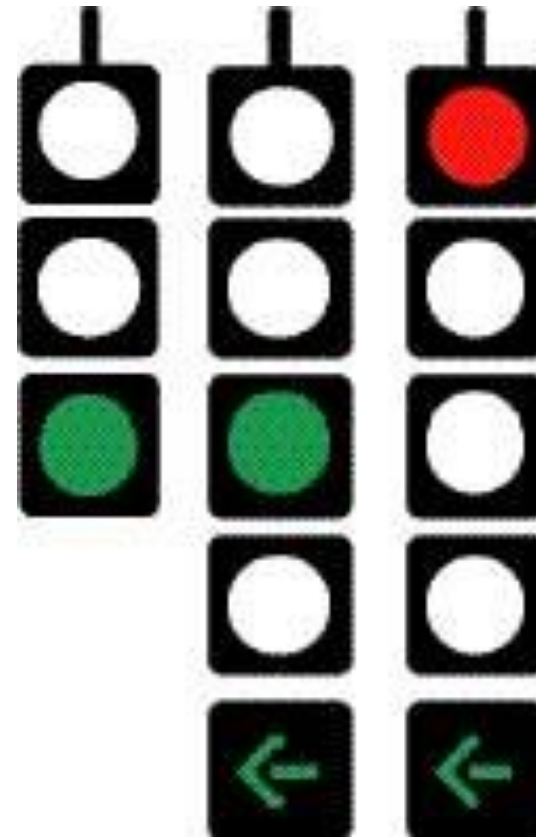
Layout:

The signs are placed on each side of the road, several hundred feet in front of the intersection.



Signals

- Green means “go”. But always “Search” as you approach a green light.
- You must allow any pedestrian or vehicle who is legally in the intersection to clear the intersection.



Signals

- When either of these is lit, pedestrians should check before walking across.



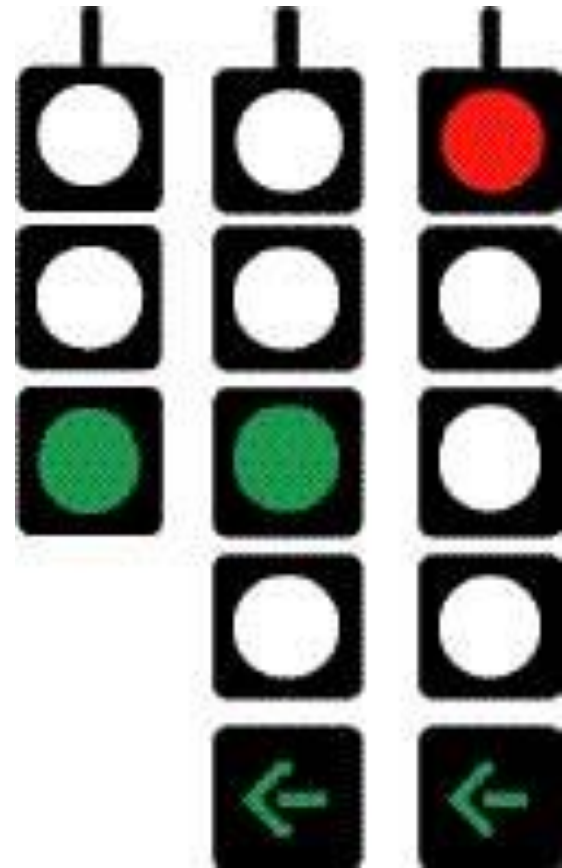
Signals

When any of these are lit, you do NOT begin to cross the intersection. **If you are already in the intersection, continue across.**



Arrows

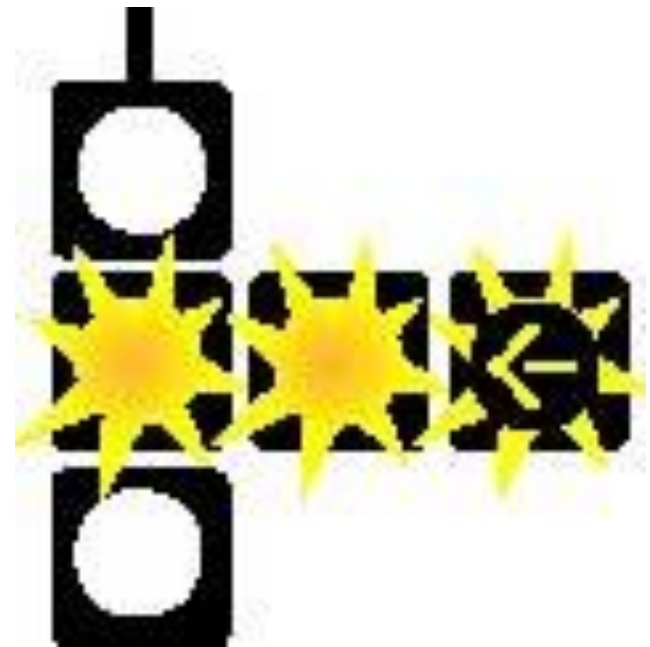
- A green arrow means that turn is **PROTECTED**. No other traffic should conflict with the turn. But always “Search” for possible problems.





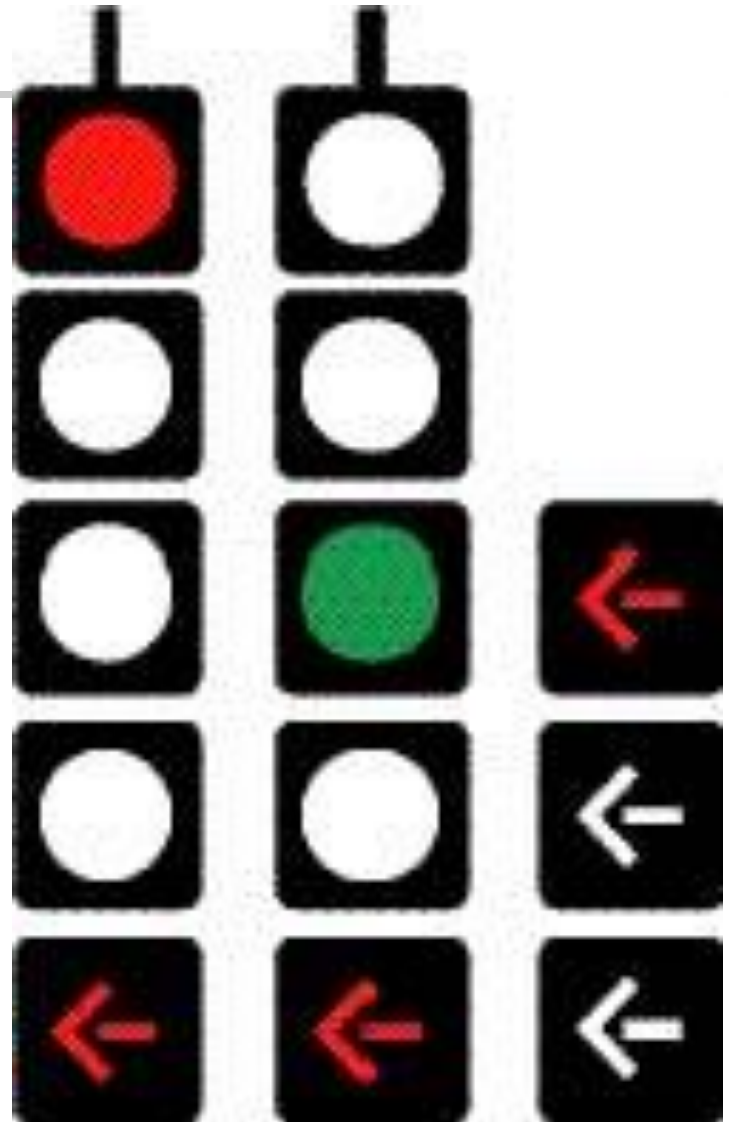
Arrows

- A yellow arrow means the **protected turn is ending**. So stop if safely possible.



Arrows

- A red arrow means you **can't turn in that direction.**



Signals Color and Placement

- Red
- Yellow
- Green
- Flashing yellow
- Flashing red
- Arrows





Signal changing

- Timed or linked to sensors.
- **They can be programmed to adjust to the changing flow of traffic.**



Signal changing

- Pedestrian actuated-press the button of the pole
- Traffic actuated



Signals not working

- If signals are not working, consider the intersection **an uncontrolled intersection.**
- **Page 60. Traffic Light Signals:**
- **If a traffic signal is not functioning, treat the intersection as you would an uncontrolled intersection.**



Signals not working

- **Sometimes an officer or civilian will direct traffic.**

**If there is conflicting
information at intersection,
which do you obey?**

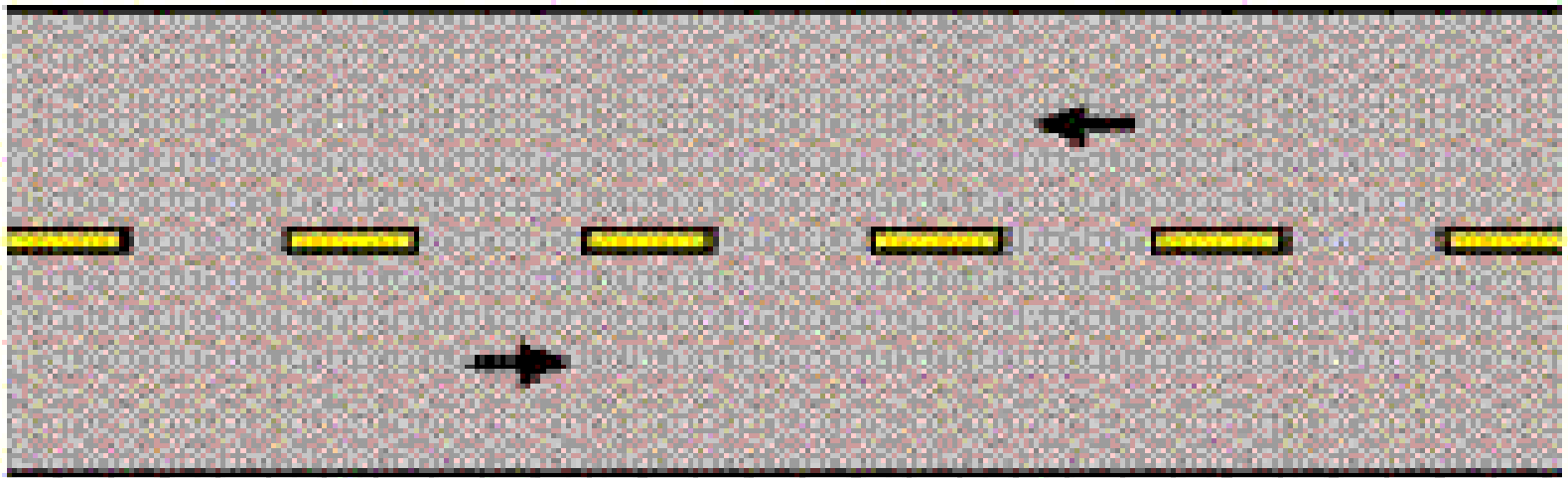


Pavement markings give critical information.



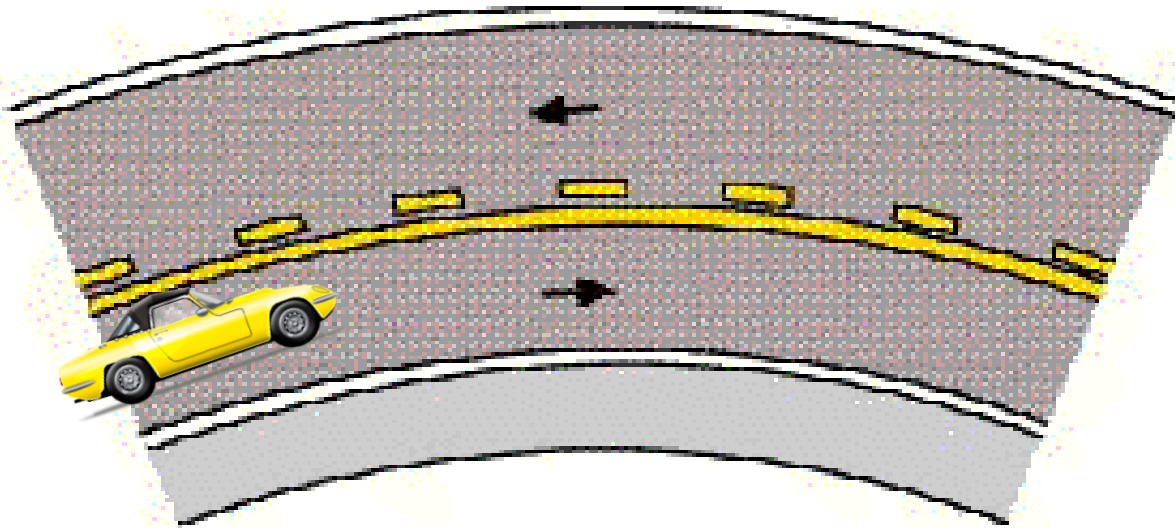
Pavement Markings

- Dashed or broken yellow line separates traffic moving in **different directions**



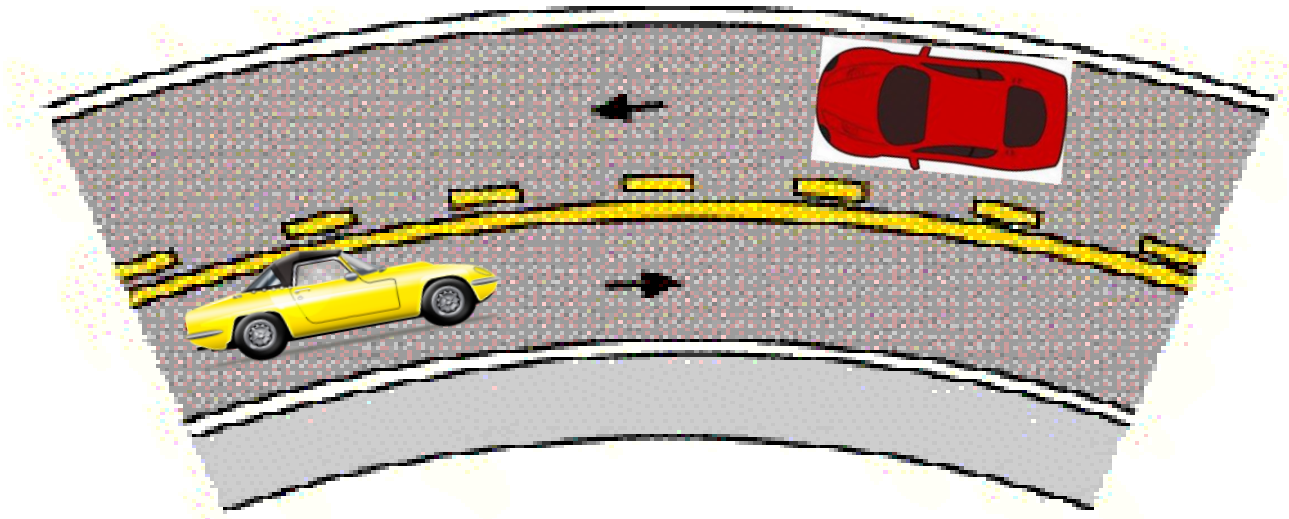
Pavement Markings

- The solid yellow line means **passing is prohibited, if line is on your side of roadway.**



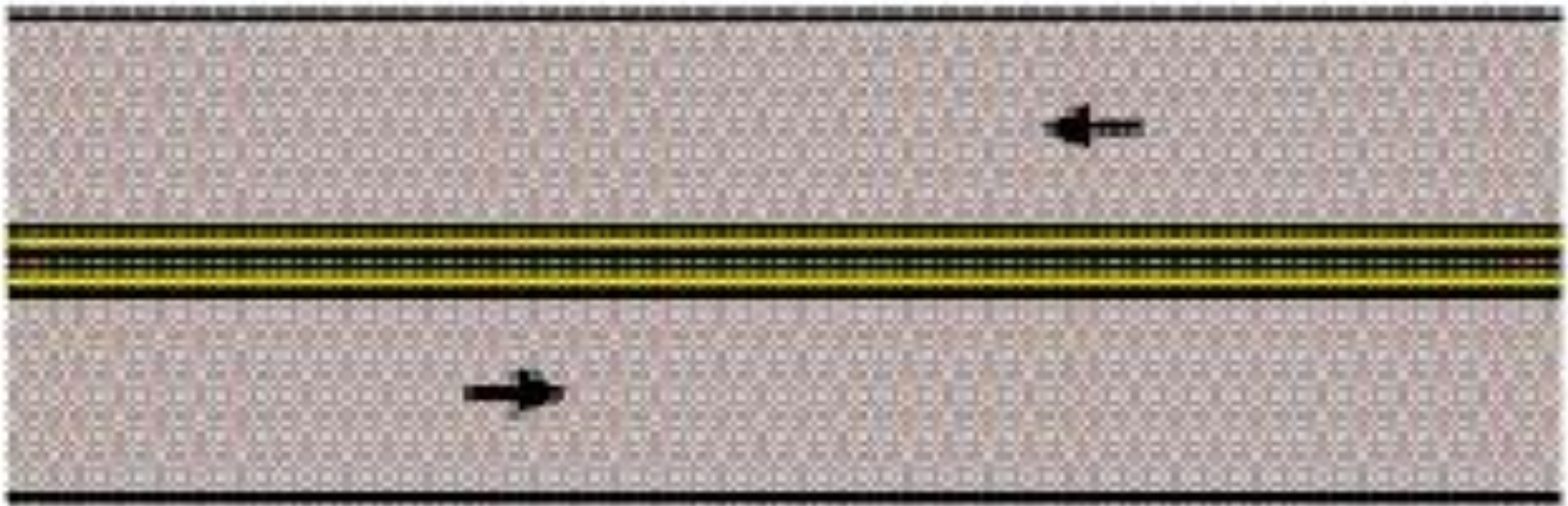
Pavement Markings

- Here the **yellow car cannot pass**; traffic moving left may pass.



Pavement Markings

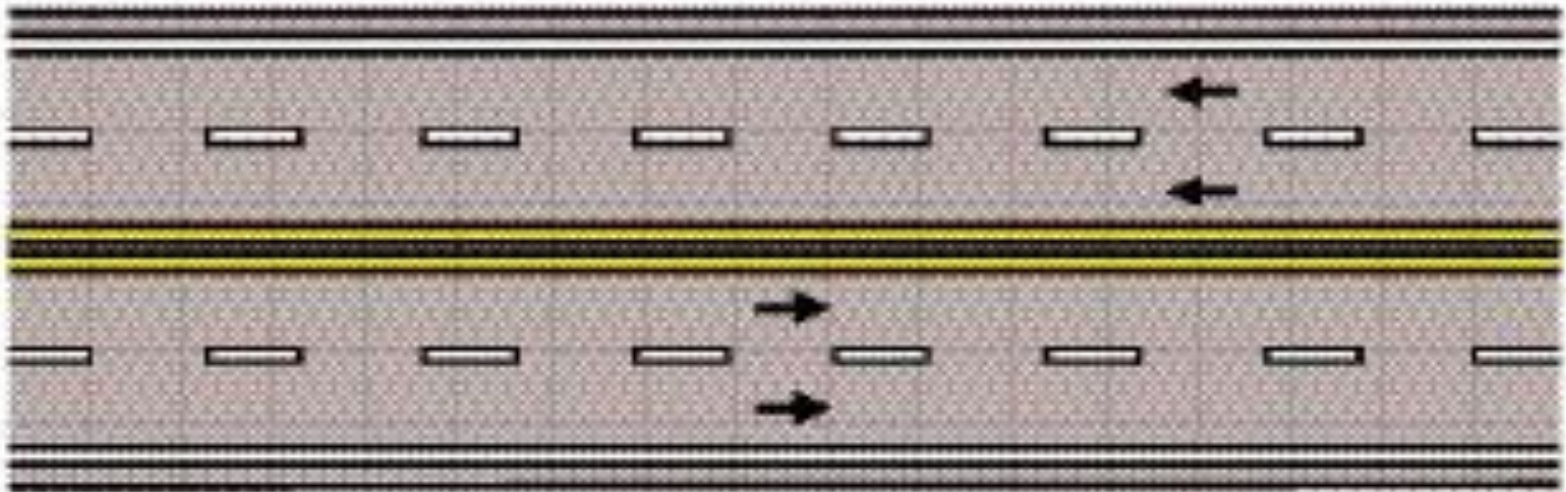
- On this two-lane road, traffic in **both lanes is prohibited from passing.**





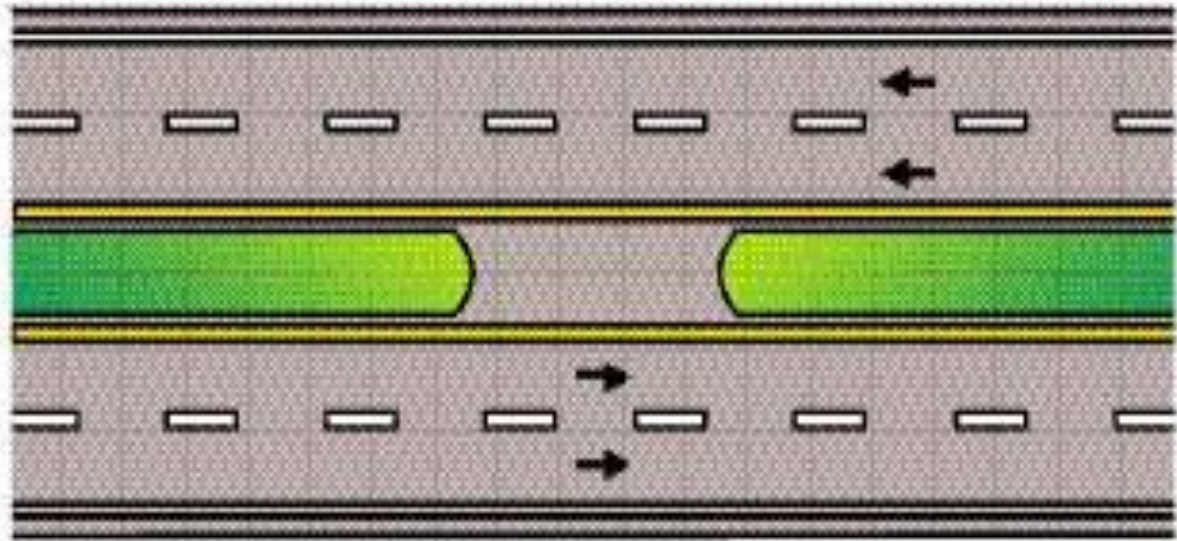
Pavement Markings

Here no one can cross the double yellow line to pass.



Pavement Markings

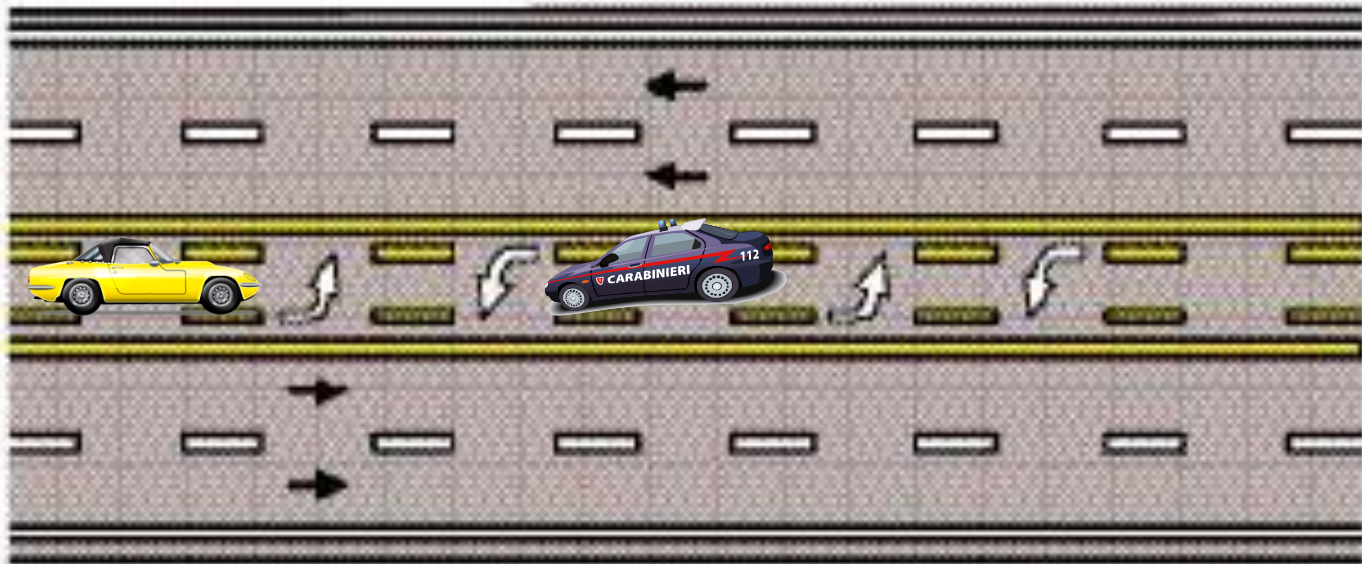
Here is a multiple-lane roadway with traffic moving in both directions. At inner edges there is a median divider, but no shoulders.





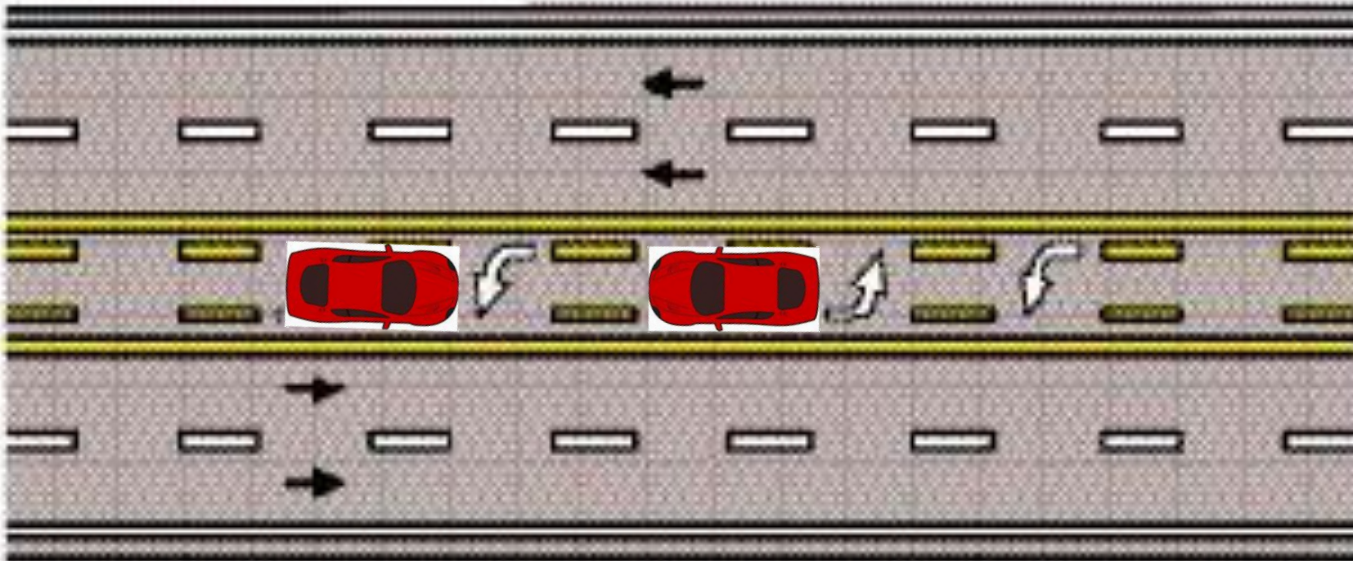
Pavement Markings

The center turn lane is reserved **for left-turning traffic from each direction.**



Pavement Markings

Drivers often enter this turn lane too early and become a danger to oncoming drivers trying to use the lane. Be very careful.



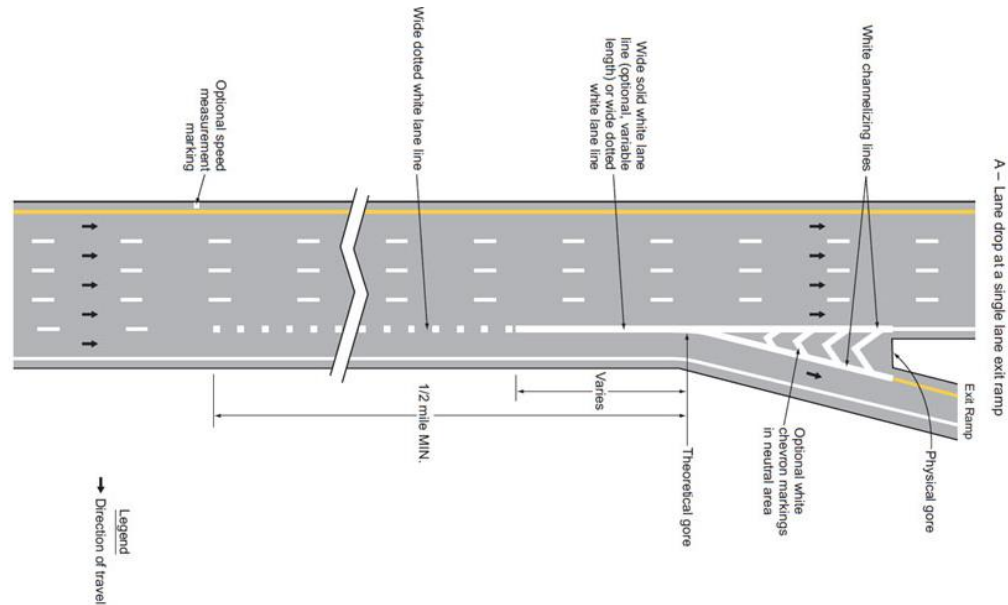
White pavement lines

- White lines separate lanes of traffic moving in the same direction.



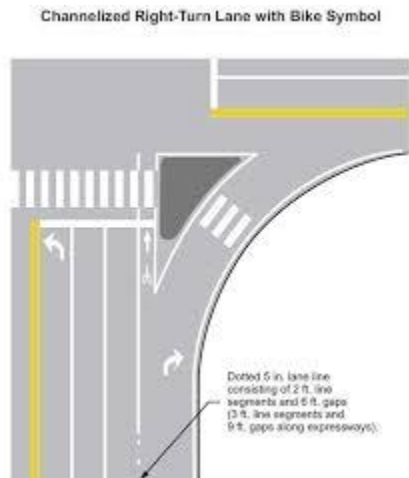
White pavement lines

- White dashes separate lanes of traffic moving in same direction.
- **Short and thick dashes** mean that lane will end or have to exit.



White pavement lines

- A solid white lane line - lane changes are discouraged.
- Solid white lines also mark crosswalks, parking stalls, edges of a roadway.



White pavement lines







You should not cross solid white lines.
Lane changes are discouraged.

White pavement lines

- A solid white line with a bicycle insignia along the side of a roadway marks a **“bicycle only” lane.**
- Bicycle riders must obey all traffic laws; and car drivers must be courteous to bicyclists.
- **When may a driver use the bike lane?**



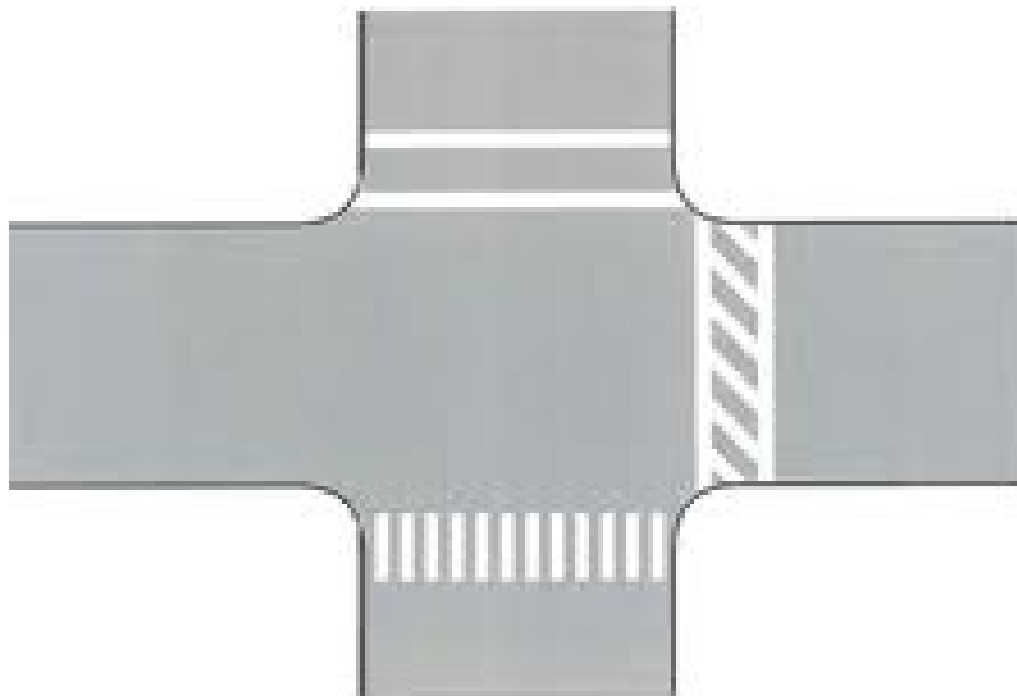
White pavement lines

- **Double solid white** lines mean that **lane changing is prohibited!**



Crosswalks

- White lines can indicate a crosswalk.



*Pedestrian
Crosswalk*

Always give pedestrians the benefit of a doubt



Note the white stop line in this pic



Crosswalks

- Always watch for pedestrians in crosswalks.



Crosswalks

- Always watch for pedestrians approaching crosswalks.



Crosswalks

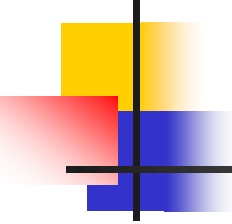
Always watch for pedestrians NOT in the crosswalk!!



Crosswalks

- Remember that as a driver you must stop for a pedestrian in a **marked OR UNMARKED** crosswalk!





Rumble strips

- What are they?
- Corrugated roadway surface. The wheels hitting this surface make a loud noise.
- The purpose is to **“wake you up”**, to alert you, to warn you.





Rumble strips-where?

- **Approach** to a stop sign where stop sign might not be expected.
- Along **edge of roadway** to warn you that you might go off the roadway. Often used on freeway curved exit ramps.





Reflectorized markers

- **Reflectorized roadway markers** are reflective material placed on roadway surface **to indicate lane lines**.
- They are very effective.
- Snowplows are tough on these markers; so Minnesota does not use them to any great extent
- Sometimes they are used in construction zones.





Speed Bumps

- These are used where traffic must move very slowly.
- Parking areas
- Residential areas

Speed Bumps

- Speeding over a speed bump can be very damaging to the car.
- Also to any passengers
- *So S-l-o-o-o-w down as you approach .*



Painted curbs - mean what?

No parking! Some cities use **yellow**, some red, some white.



It is obvious ---

Signs and signals and pavement markings are a major vital part of the HTS.



Not only in Minnesota but
wherever you may drive.



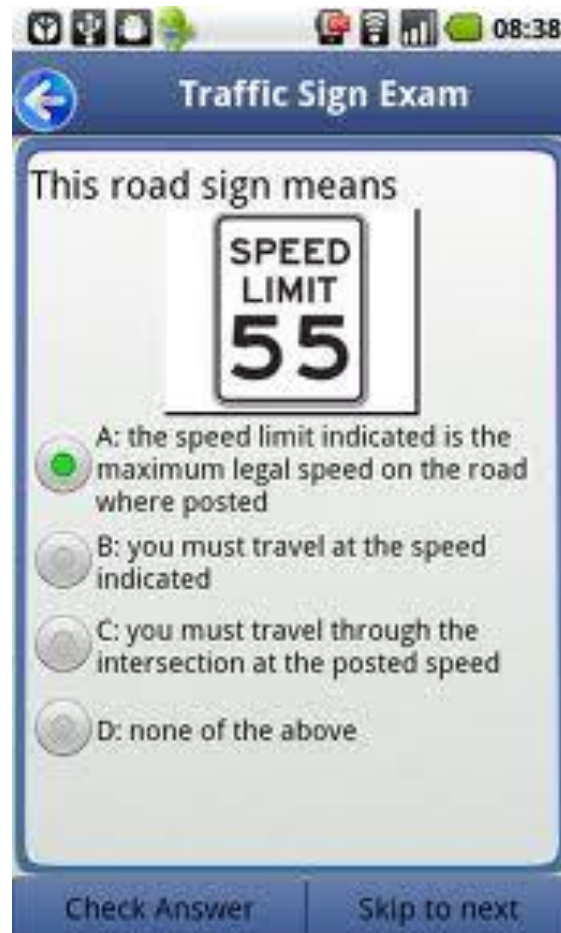
International signs

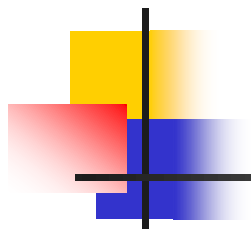


A significant portion of the permit test deals with signs.



In fact, unless DPS has changed the format of the test, all the signs and signals items are in the first part of the test.





W17





W41



W67



W50-1



W59



W42



W47



W23



W45





Lane Use Control Signals

These signals allow lanes to be used by traffic from different directions at different times. Drivers must also follow all other traffic signs and signals that apply.



A steady downward green arrow means you are allowed to drive in the lane below the green arrow.

Prepare to move



A steady yellow X means you should prepare to move into another lane in a safe manner. A lane-control change is being made in the lane below the steady yellow X. A steady red X will be displayed next, and you cannot occupy the lane at that time.

**Used to make left
turns - Use with
caution**



A flashing yellow X means you can use the lane below the flashing yellow X to make a left turn. You must use caution because left-turning vehicles from the other direction may be using the same lane.

Prepare to move



A steady downward yellow arrow means you should prepare to move into another lane in a safe manner. The freeway lane below the steady downward yellow arrow will be closed.

Use with caution

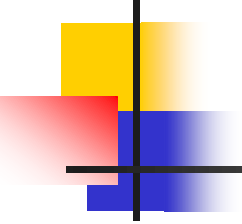


A flashing downward yellow arrow means you can use the freeway lane under the flashing downward yellow arrow. Exercise caution in this lane.



A steady red X means you cannot drive in the lane under the steady red X signal.

Lane Use Control Signal.

- 
- Steady Downward Green Arrow
 - Steady Yellow X (Prepare to move)
 - Flashing Yellow X (Left Turns)
 - Steady Yellow Arrow (Prepare to move)
 - Flashing Yellow Arrow (use extreme caution)
 - Steady Red X



DO NOT
ENTER

DO NOT
ENTER

W 15TH
ST

The End

