



"Our Schools are passionate about the learning-for-all mission and understand that every student matters. We are responsible and accountable for the education of every student that walks through our doors every day."

Dear Sand Devil parents,

This letter is to communicate our **school's daily bell schedule** and provide information that is important for families as PHS moves to a **hybrid model of learning**.

Students that elected "in-person" learning will learn on campus 2 days a week. These students have been placed in a group to limit the amount of students on campus at one time. By now you should have gotten a call and an email from the District about the group your child(ren) is in for in-person learning.

Group A and C will attend school in-person on Monday and Tuesday and continue remote learning on Wednesday, Thursday, and Friday.

Group B and D will attend school in-person on Thursday and Friday and continue remote learning on Monday, Tuesday, and Wednesday.

Wednesdays are now early release of school at 1:30pm. All students will learn remotely on Wednesdays, 8:00am-1:30pm.

All students in-person and remote will follow the schedules below starting on October 12, 2020.

Monday, Tuesday & Thursday, Friday:

1A/6B- 8:00-9:24am

2A/7B- 9:32-10:49am

3A/8B- 10:57-11:27- Student Advisory

Lunch- 11:27-12:07pm

4A/9B- 12:15-1:35pm

5A/10B- 1:43-3:00pm

Wednesdays:

1A/6B- 8:00-9:08am

2A/7B- 9:16-10:22am

NO ADVISORY ON WEDNESDAYS

4A/9B- 10:30-11:36am

Lunch- 11:36-12:16pm

5A/10B- 12:24-1:30pm

It is critical that we all check our wellness daily.

If we are showing any symptoms, we MUST stay home for the safety of all.

Symptoms include:

**Students and staff MUST NOT come to school
if they exhibit any of the following symptoms:**

- Fever of 100.4 degrees or higher, or chills;
- Shortness of breath or difficulty breathing;
- Muscle aches;
- Sore throat;
- Headache;
- Unexplained fatigue;
- Congestion or runny nose;
- Cough;
- Vomiting;
- Diarrhea; or
- New loss of taste or smell.

Parents are the first wellness check:

Each morning, ask: *Is my child feeling sick at all?* If so, do not send your child(ren) to school. If they feel well, check the following: Does my child have a mask? Does my child have school supplies and chromebook/laptop?

The bus stop is the second wellness check:

Your child should be well and **MUST wear a mask** to ride District transportation.

Entering campus (at gates or bus ramp) is where every student will have a wellness check with a temperature check. **Students will NOT be allowed to enter campus unless they pass the wellness check and are wearing a mask properly.**

In order to provide supervision to all students and monitor mitigation strategies that aim to keep our students and staff safe and healthy: **Do NOT drop students off before 7:30am.** Our campus will not be open; therefore, students are not allowed on campus before 7:30am. Parents will be contacted if students are dropped off before 7:30am. Remember, we cannot provide supervision to students before our school opens at 7:30am.

Students allergic to hand sanitizer will be permitted to go to the restroom to wash hands with soap and water during class and also encouraged to make a stop at the restroom during each passing period to wash hands with soap and water. If a classroom has a sink, the students can wash hands with soap and water upon entering and upon exit.

Lunch time: All students will eat lunch on campus. There will be NO off campus lunch this school year. Students may bring their own lunch with them in the morning. Parents will NOT be able to drop food off for their child(ren). All PHS students will eat free (breakfast and lunch) through December 2020.

There will be no in-person after-school services or activities. These services and activities will remain virtual until further notice. **All students will exit campus by 3:15.** Students riding the bus will wait at the bus ramp. **If you pick your child up, make arrangements to pick them up between 3:00-3:15.** All buildings will close at 3:15.

This email includes many attachments, please open each and read.

The contents of this email will also be sent via PO Boxes this week.

Sincerely,

A handwritten signature in cursive script, appearing to read "Anne Martin".

Anne Martin, Principal



September 17, 2020

Dear Parents of Page High School:

Once we return to in-person learning, where students will be physically present on our campus and in the classrooms, some things will look different. I appreciate in advance your compliance.

- Students will be screened at both the north and south entrances with a temperature check and brief questionnaire, to include questions such as, "Are you experiencing shortness of breath?" Temperatures must read below 100.4 degrees. Students with a temperature at or above 100.4 degrees, or who answer in the affirmative to the screening questions will not be permitted to enter Page High School.
- All student drop off must be conducted at the front entrance to Page High School. Parents must remain until their child passes the screening.
- Students will no longer be permitted to leave campus during lunch.
- Lunches cannot be delivered to students, they must bring their lunch in the morning or purchase lunch at the cafeteria.
- Lockers will not be used by students, they must carry their chromebook, textbooks and other supplies with them. Backpacks, duffle bags or messenger bags are encouraged.
- Students must proceed directly to their classroom before school, during passing periods, and after lunch.
- When checking out a student, parents must call ahead and remain in their vehicle until the student is brought out to them. Parents will show identification from their car.
- Student parking will primarily be in the CAB parking lot. Students who drive to school and are late, have release time, or are part-time students without a 1A/6B class will park in the east lot near the baseball practice field at the front of the High School. These students will enter the main building through the front entrance to be screened prior to entry.
- Students who show symptoms of COVID-19 during the school day will be isolated until they can be picked up. These students will not be permitted to ride home on the bus.

These measures are intended to ensure student safety while providing the best possible education for all our students.

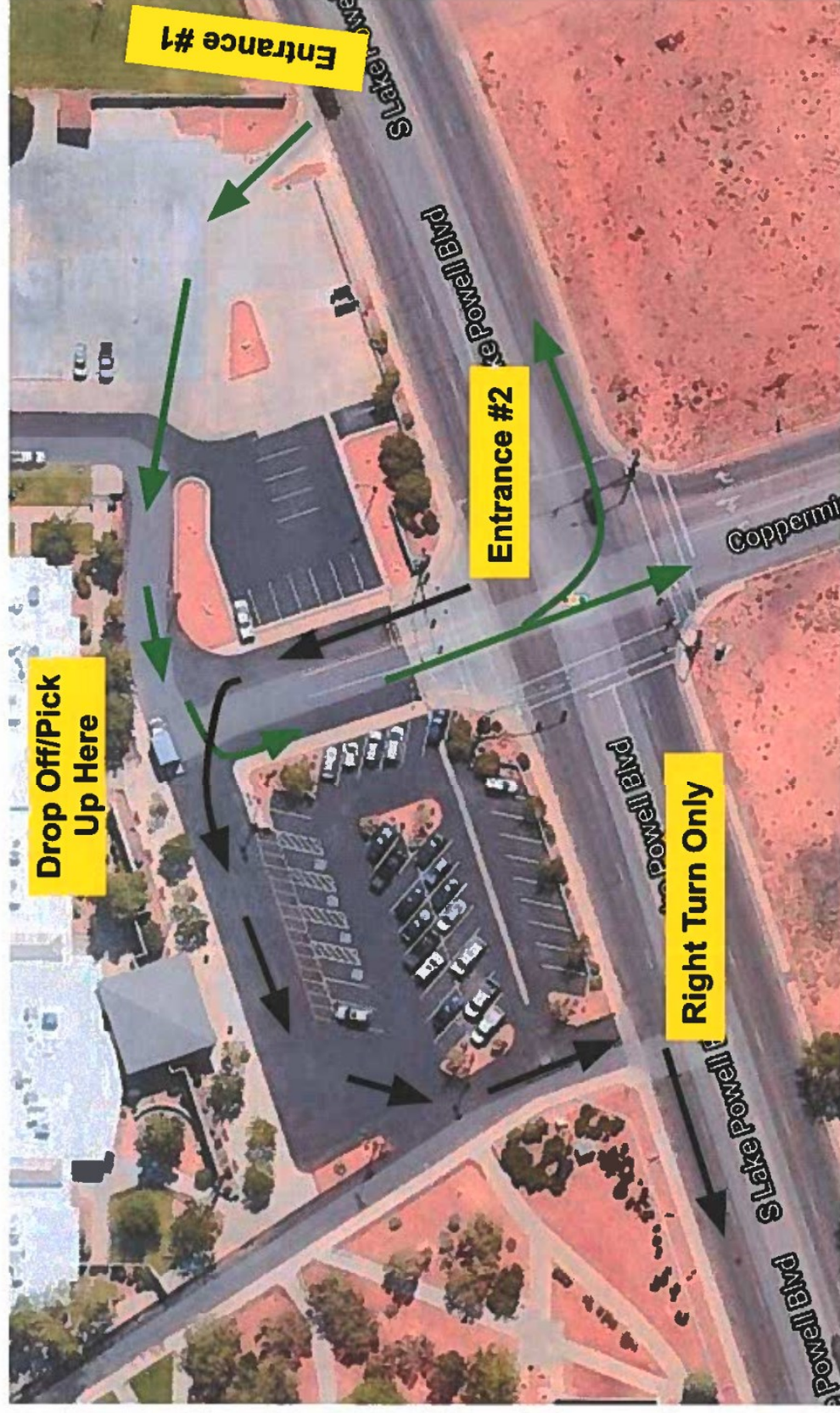
Brian Henderson

Assistant Principal, Page High School

Every Page High School graduate is college, career, and community ready.

~ P.O. Box 1927 ~ Page, Arizona 86040 ~ 928-608-4138

Student Drop Off/Pick Up from front of High School Only



Entrance #1 is for vehicles needing to go straight on Coppermine, or left on Lake Powell Blvd.


Entrance #2 is for vehicles needing to turn right on Lake Powell Blvd.

Page High School Calendar 2020-2021

A Day - Periods 1-5

B Day - Periods 6-10

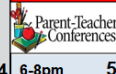
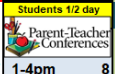
AUGUST

Sunday	Monday	Tuesday	Wednesday	Thursday	Friday	Saturday
					VIRTUAL FRESHMAN ORIENTATION	1
2	3	4	5	6	7	8
	A DAY	B DAY	A DAY	B DAY	A DAY	
9						15
	B DAY	A DAY	B DAY	A DAY	B DAY	
16						22
	A DAY	B DAY	A DAY	B DAY	A DAY	
23						29
	B DAY					
30	31					

SEPTEMBER

Sunday	Monday	Tuesday	Wednesday	Thursday	Friday	Saturday
		A DAY	B DAY	A DAY		
		1	2	3	No School	5
	No School				A DAY	
6	7	8	9	10	11	12
	B DAY	A DAY	B DAY	A DAY	B DAY	
13	14	15	16	17	18	19
	A DAY	B DAY	A DAY	B DAY	A DAY	
20	21	22	23	24	25	26
	B DAY	A DAY	B DAY			
27	28	29	30			

OCTOBER

Sunday	Monday	Tuesday	Wednesday	Thursday	Friday	Saturday
				A DAY	B DAY	
				1	2	3
	A DAY	B DAY	A DAY	B DAY	No School	
4		5	6		8	10
	A DAY	B DAY	A DAY	B DAY	A DAY	
11						17
	B DAY	A DAY	B DAY	A DAY	B DAY	
18						24
	A DAY	B DAY	A DAY	B DAY	A DAY	
25	26	27	28	29	30	31

NOVEMBER

Sunday	Monday	Tuesday	Wednesday	Thursday	Friday	Saturday
	B DAY	A DAY	B DAY	A DAY	B DAY	
1	2	3	4	5	6	7
	A DAY	B DAY	No School	A DAY	B DAY	
8	9	10		12	13	14
	A DAY	B DAY	A DAY	B DAY	A DAY	
15	16	17	18	19	20	21
	HAPPY THANKSGIVING					
22	No School	No School	No School	No School	No School	28
	B DAY					
29	30					

DECEMBER

Sunday	Monday	Tuesday	Wednesday	Thursday	Friday	Saturday
		A DAY	B DAY	A DAY	B DAY	
		1	2	3	4	5
	A DAY	B DAY	A DAY	B DAY	A DAY	
6	7	8	9	10	11	12
	B DAY	A DAY	B DAY	A DAY	B DAY	
13	Finals Week				Students 1/2 day	19
	Happy Holidays!					
20	No School	No School	No School	No School	No School	26
						
27	No School	No School	No School	No School		
	28	29	30	31		

JANUARY

Sunday	Monday	Tuesday	Wednesday	Thursday	Friday	Saturday
				Happy New Year!		
					No School	2
	A DAY	B DAY	A DAY	B DAY	A DAY	
3		4	5	6	7	9
	B DAY	A DAY	B DAY	A DAY	B DAY	
10	11	12	13	14	15	16
	No School	A DAY	B DAY	A DAY	B DAY	
17		18	19	20	21	23
	A DAY	B DAY	A DAY	B DAY	A DAY	
24						
31	25	26	27	28	29	30

FEBRUARY

Sunday	Monday	Tuesday	Wednesday	Thursday	Friday	Saturday
	B DAY	A DAY	B DAY	A DAY	B DAY	
	1	2	3	4	5	6
	A DAY	B DAY	A DAY	B DAY	No School	
7	8	9	10	11	12	13
	No School	A DAY	B DAY	A DAY	B DAY	
14	15	16	17	18	19	20
	A DAY	B DAY	A DAY	B DAY	No School	
21	22	23	24	25	26	27
28						

MARCH


Sunday	Monday	Tuesday	Wednesday	Thursday	Friday	Saturday		
	A DAY	B DAY	A DAY	B DAY	A DAY			
	1	2	3	4	5	6		
	B DAY	A DAY	B DAY	A DAY	B DAY			
		Parent-Teacher Conferences		Students 1/2 day				
7	8	6-8pm	9	10	1-4pm	11	12	13
Spring Break								
	No School	No School	No School	No School	No School			
14	15	16	17	18	19	20		
	A DAY	B DAY	A DAY	B DAY	A DAY			
21	22	23	24	25	26	27	28	29
	B DAY	A DAY	B DAY					
28	29	30	31					

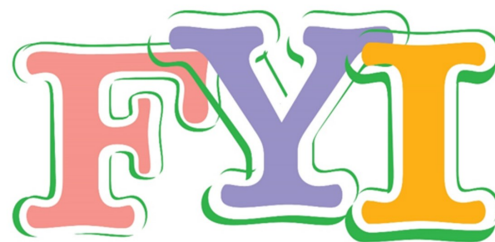
APRIL

Sunday	Monday	Tuesday	Wednesday	Thursday	Friday	Saturday
				A DAY	B DAY	
				SHOWCASE!	1	2
	A DAY	B DAY	A DAY	B DAY	A DAY	
4	5	6	7	8	9	10
	B DAY	A DAY	B DAY	A DAY	B DAY	
11	12	13	14	15	16	17
	A DAY	B DAY	A DAY	B DAY	No School	
18	19	20	21	22	23	24
	A DAY	B DAY	A DAY	B DAY	A DAY	
25	26	27	28	29	30	

MAY

Sunday	Monday	Tuesday	Wednesday	Thursday	Friday	Saturday
						1
	B DAY	A DAY	B DAY	A DAY	B DAY	
2	3	4	5	6	7	8
	A DAY	B DAY	A DAY	B DAY	A DAY	
9	~ Senior Finals Week ~					PHS Graduation 6:00 PM
	B DAY	A DAY	B DAY	A DAY	B DAY	
16	17	18	19	20	21	22
	A DAY	B DAY	A DAY	B DAY		
23	24	25	26	27	28	29

		
Mon-Tue	Wed	Thur-Fri
A1/B6 8:00 - 9:24	A1/B6 8:00-9:08	A1/B6 8:00 - 9:24
A2/B7 9:32 - 10:49	A2/B7 9:16 -10:22	A2/B7 9:32 - 10:49
Student Advisory A3/B8 10:57-11:27	No Student Advisory on Wednesday. A4/B9 10:30-11:36	Student Advisory A3/B8 10:57-11:27
Lunch 11:27-12:07	Lunch 11:36-12:16	Lunch 11:27-12:07
A4/B9 12:15 - 1:35	A5/B10 12:24 - 1:30	A4/B9 12:15 - 1:35
A5/B10 1:43 - 3:00		A5/B10 1:43 - 3:00



Office Hours

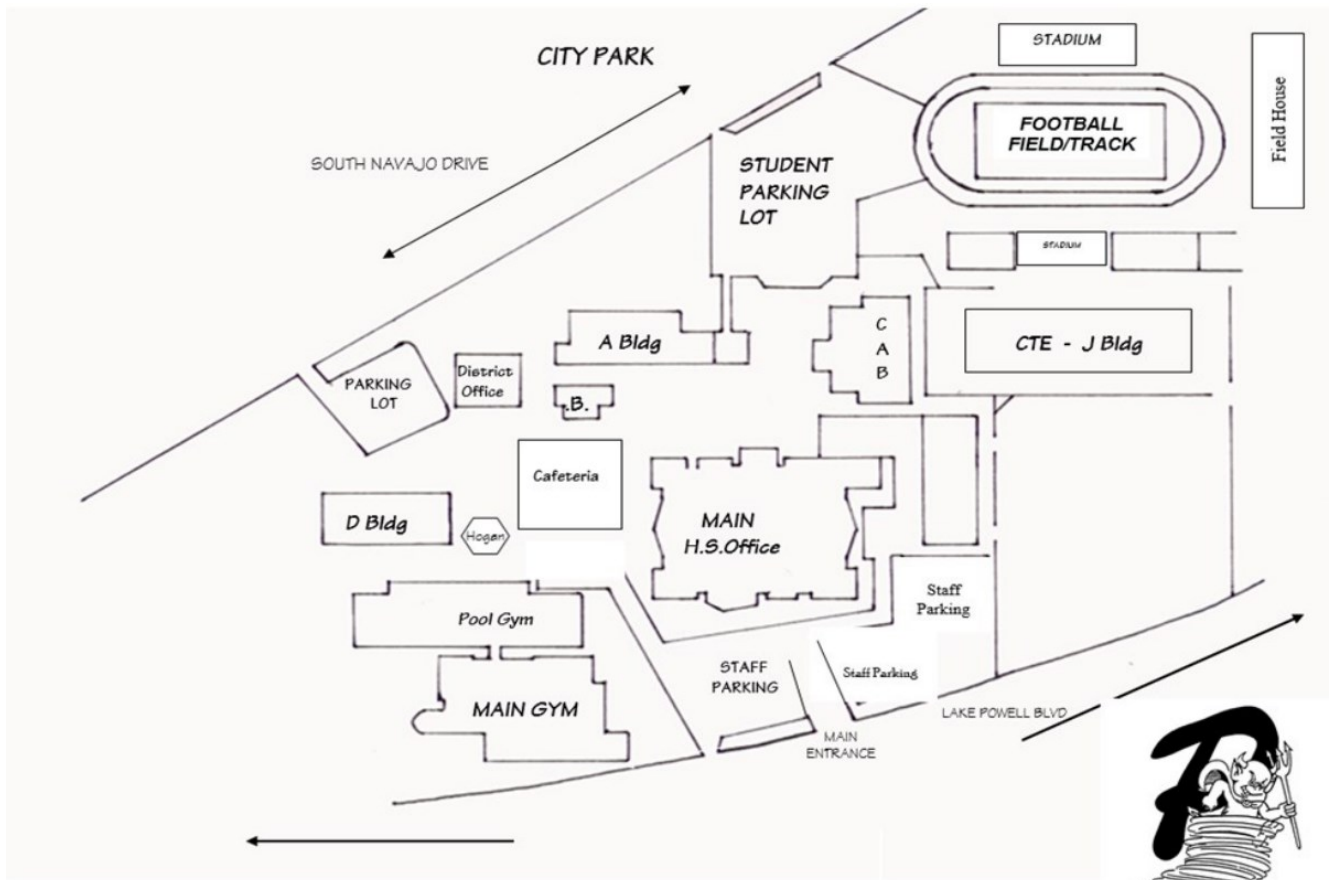
Monday-Tuesday
Thursday-Friday
7:30am-4:00pm

Wednesday
7:30am-2:00pm

• FOR YOUR INFORMATION •

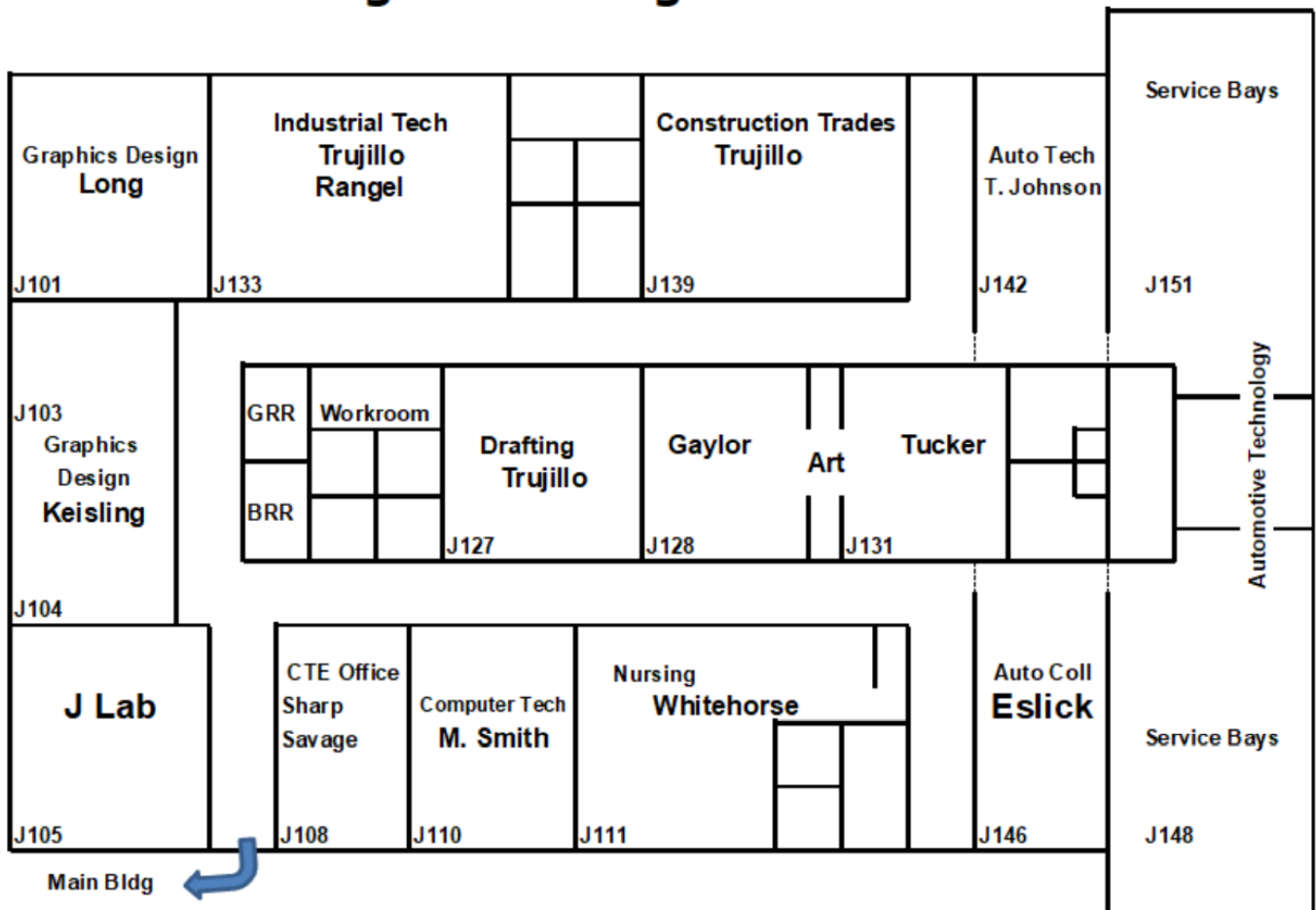
While the lobby is open, **no one** will be allowed in the school unless they have an appointment.

- For *general school questions & attendance*, call Mikaila at 928-608-4135.
- For *student registration/withdrawal*, call Kristy at 928-608-4142.
- For questions about your *class schedule* or to talk to a *counselor*, call Sunni at 928-608-4198.
- For *athletics and activities*, call Kris at 928-608-4147.
- To schedule an appointment with an *Administrator*, call Kendra at 928-608-4133.



Welcome to *Page High School*, home of the *Sand Devils*!!

CTE Building - J Building



A 102 Workroom	A 104 Vail	A 106 N. Cambridge	A 108 Manygoats	A 110 Tandberg	A 112 Hartley	A 223 Bunch	A 224 Whitley		
CAB									
A 101 J. Smith	A 103 Dubey	A 105 Wold	G R. R.	B. R. R.	A 216 Moore	A 217 Moore #2	A 220 AVID	A 221 Willson	A 222 Freeman

Main Entrance

☞ District Office Cafeteria Office ↓↓↓ Entrance High School Office ☞

