



Kate Shepard
Elementary

Shepard Showcase

A Kate Shepard Elementary School Monthly Publication

Kate Shepard Elementary School
3980-B Burma Rd. Mobile, AL 36693
251-221-1645 Ph. 251-221-1646 Fax

<https://shepardelemmcpssal.schoolinsites.com/>

August 17, 2020

Volume 1, Edition 1



welcome

to the Kate Shepard family:

Dalton Becker- PE teacher
Lauren Bower- 4th Grade
DeeDee Graham- SPED paraprofessional
Lindy Guidry - 5th Grade
Katy Moore- 4th Grade
Lesley Mullin- ARI coach
Janita Pate - Counselor
Glisa Peralta- 3rd Grade
Melody Tarver- SPED paraprofessional
Melanie Winter- Assistant Principal

A note from the counselor...

Hello!

My name is Janita Pate and I am eager to start my first year at Kate Shepard Elementary as school counselor. It is my honor to have this opportunity to make a difference in the lives of our students. Even though we are living in unique circumstances, I believe your child(ren) will have many occasions to grow and flourish in their education here at Shepard Elementary School. Parents and students will have direct access to me through students' Schoology homepage. I am looking forward to working with you in making this an awesome school year.

Best regards,
Janita Pate
(251) 221-1645
jpate@mcpss.com



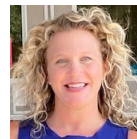
Meet your administrators:

Hello KSES families! I am Angela Lincecum and I am so excited to be the new principal at Kate Shepard Elementary School! I have worked in Mobile County Public Schools for twenty years. I was an elementary teacher for many years before becoming a School Improvement Specialist. During my tenure, I have served many MCPSS schools and supported continuous improvement efforts across our district. I am thrilled to be able to bring my passion for teaching and learning to Shepard. I am married and have three wonderful children. Although this is not how we expected to begin the 2020-2021 school year, we WILL have a successful year! I know that we will face obstacles as we begin a new way of teaching and learning, but we will adjust and overcome. Thank you for your support and dedication as we make this the best possible experience for your child. Please feel free to contact me with any questions/concerns. I look forward to meeting you all very soon! ☺- Angela Lincecum (alincecum@mcpss.com)



Dear Kate Shepard Elementary Families,

It is with great pride and excitement that I write this letter of introduction to you as the newly appointed Assistant Principal of Kate Shepard Elementary School. I am honored to be in this position, and am looking forward to assisting Mrs. Lincecum in making this a great school year! I have spent my professional career working with elementary school students. I was a classroom teacher for 12 years, and was a Math Coach for 5 years and have recently been appointed as the Assistant Principal. My decision to become an administrator came from a strong desire to make a positive impact on an entire school community. As the Assistant Principal, I will work diligently with our faculty and staff to carry out the vision and mission of Kate Shepard Elementary School. I believe that as a school, we play a fundamental role in positioning students for future success. I am committed to working closely with teachers, parents, and community members to ensure our children achieve their fullest potential. I can't wait to meet each and every one of you in person. If you have any questions or concerns, please don't hesitate to contact me via email or phone. - Melanie Winter (mwinter@mcpss.com)



Important Dates:

8/25-27 Device & Materials Pickup

9/1 Remote Learning Begins

9/7 Labor Day – No School

9/1-10 Teachers introduce students to the Schoology platform. Teachers will establish school and classroom expectations and will help students get to know their classmates and teachers through virtual ice-breaker activities. They will review last spring's content as needed and will get started on a successful 2020-2021 school year.

9/1-22 iReady diagnostic testing for each student will be conducted during this time, as well as AlaKiDS testing for kindergartners.

Follow us!



Facebook - Kate Shepard Elementary

Twitter - @kateshep_elem



<https://shepardelemmcpssal.schoolinsites.com/>

What is remote learning?

Remote learning takes place when the students and teachers are not physically present in the classroom setting and must rely on technology to connect them instead. Teachers will connect with their classes via video meetings for live instruction. Students will be able to access classroom lessons and materials and will be able to submit assignments to their teachers using Schoology, a one-stop-shop for teachers, students, and parents. Students will log on to Schoology daily using their district username and password, which will be provided by the school. See our school-wide remote learning schedule below.

Kate Shepard Elementary is giving out meals free-of-charge as part of the MCPSS Summer Feeding Program on Mondays. Pull around back by the cafeteria to pick up your meals curbside. Do not get out of your car; we will come to you. Beginning September 1, you must have your students' lunch numbers to pick up the meals.



Kate Shepard Elementary School Remote Learning Schedule

8:00 - 8:15	Morning Announcements				
8:15 - 8:45	LIVE Whole Group Instruction				
	<table border="1"> <tr> <td>K - 2</td> <td>3 - 5</td> </tr> <tr> <td>Reading/Language Arts</td> <td>Math</td> </tr> </table>	K - 2	3 - 5	Reading/Language Arts	Math
K - 2	3 - 5				
Reading/Language Arts	Math				
8:45 - 9:45	Small Group Differentiated Instruction & Independent Practice				
9:45 - 10:15	LIVE Whole Group Instruction				
	<table border="1"> <tr> <td>K - 2</td> <td>3 - 5</td> </tr> <tr> <td>Math</td> <td>Reading/Language Arts</td> </tr> </table>	K - 2	3 - 5	Math	Reading/Language Arts
K - 2	3 - 5				
Math	Reading/Language Arts				
10:15 - 11:15	Small Group Differentiated Instruction & Independent Practice				
11:15 - 11:45	Physical Education				
11:45 - 12:15	Lunch				
12:15 - 1:00	Science				
1:00 - 1:45	Social Studies				
1:45 - 3:00	Small Groups / Additional Instructional Support / Specials				

Teachers will meet with small groups remotely at specific times to be determined by teacher(s)

Students will participate in iReady (minimum of 45 minutes per week for reading and 45 minutes per week for math)

Students may also use this time to participate in lessons provided by the Counselor, Media Specialist, Technology Teacher, Art and/or Music

Special Education Resource, Speech, and Tier III intervention groups will be held at designated times specific to students' needs and goals

Rev. 8/12/20



Academic Assistance:

- If your student is struggling, reach out to their teacher and school first. We will have support available for academic and technical issues.
- MCPSS technical assistance hotline is also available Monday-Friday from 8 a.m. to 8 p.m. 221-7777
- Homework help and academic tutoring can be accessed at HomeworkAlabama.org. Log on for directions on how to get assistance. Tutors will be available daily from 10 a.m. to 11 p.m. and the service is FREE of charge.
- Visit our website to access "Keeping Our Kids Safe-A Parent's Guide to the 2020-2021 School Year"