



Taylor County School District's
2021-2022 Plan to
ELEVATE LEARNING!

A 3D rendering of a puzzle with one red piece standing out among white pieces. The puzzle is set against a background of blue geometric shapes. The red piece is the central focus, symbolizing a unique role or a key element in a team.

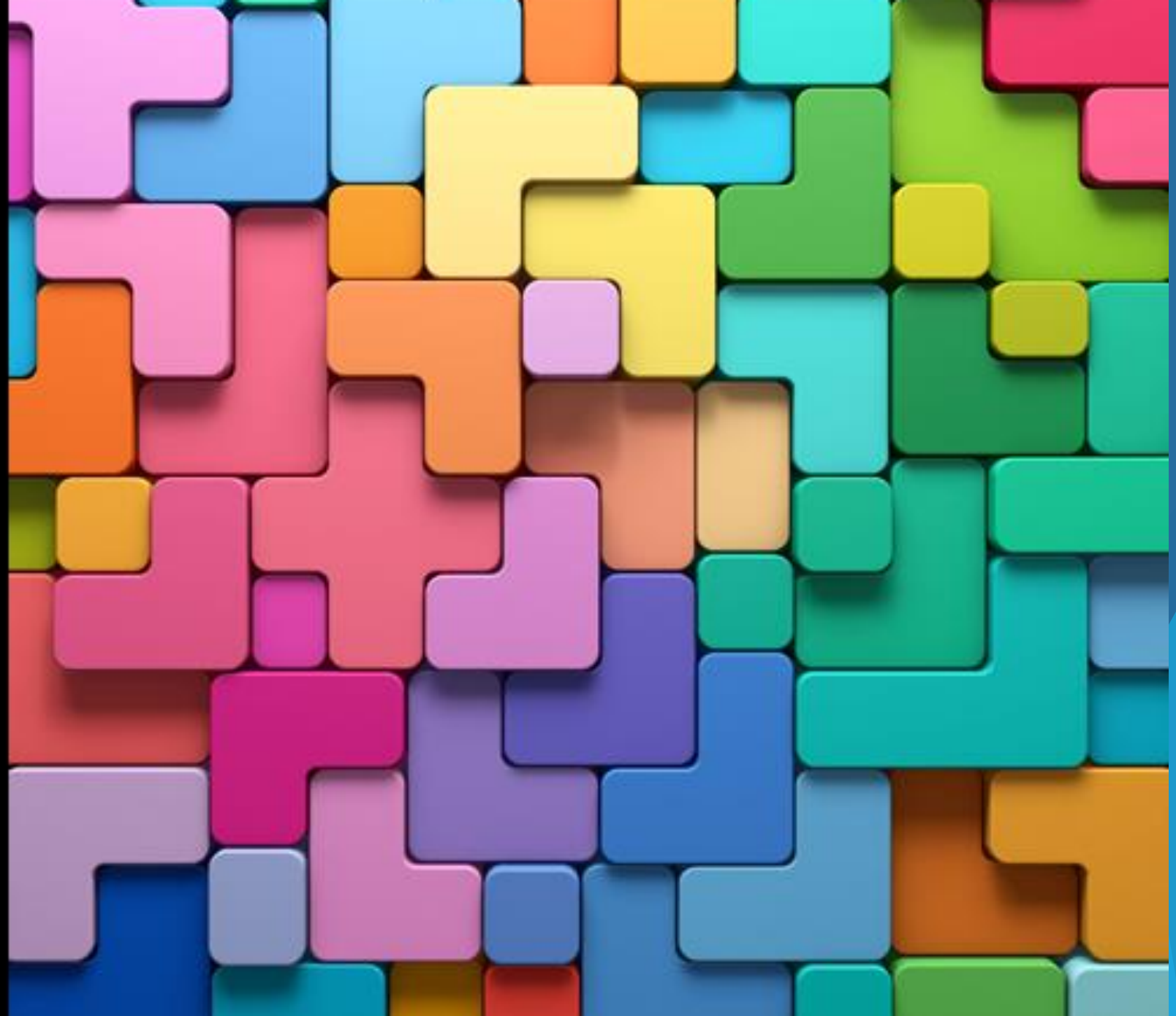
WELCOME

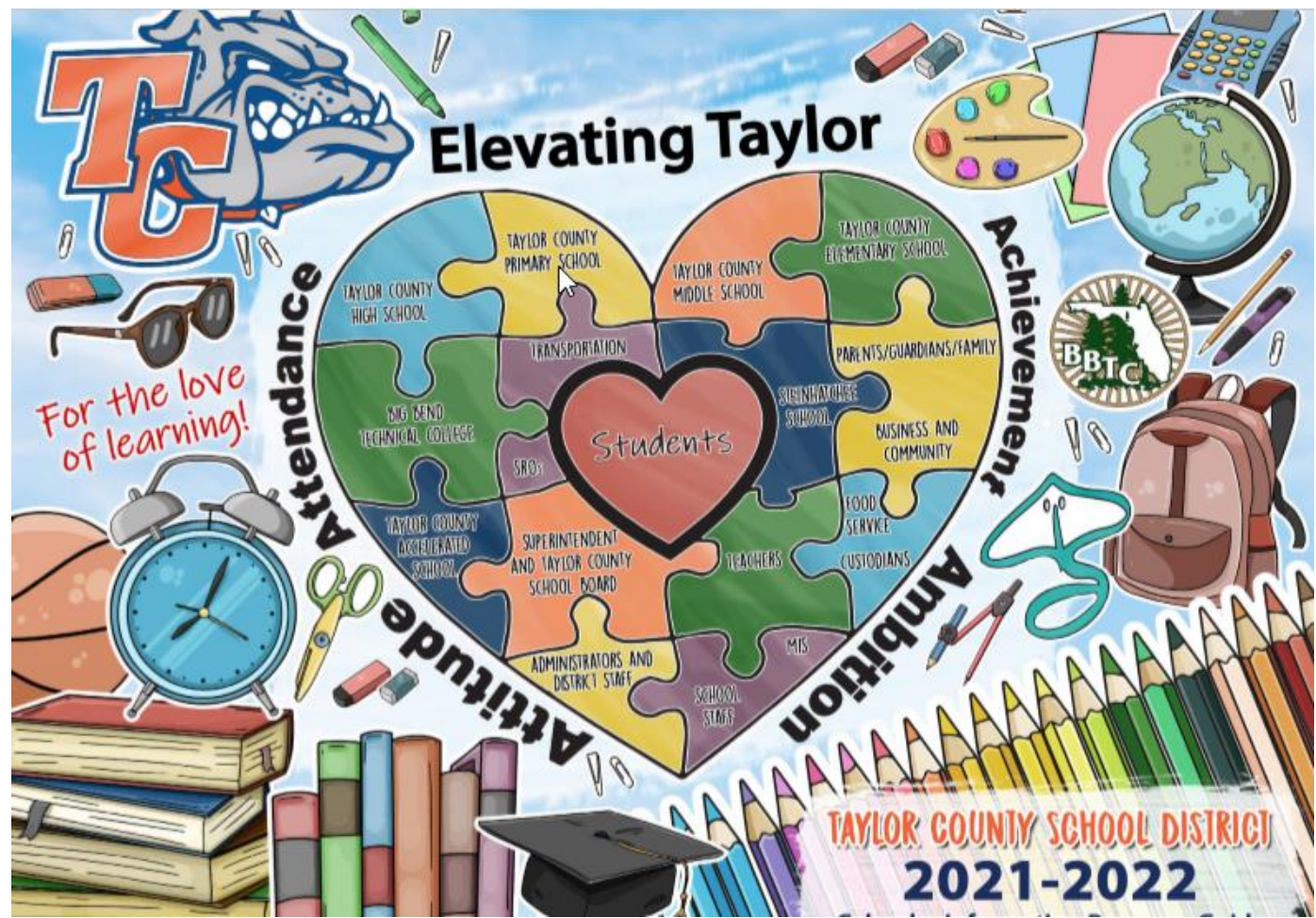
Why are we here?

Where do you fit?

Dr. Danny Glover Jr.

Superintendent of
Schools







Elevate
TAYLOR

WORKING TOGETHER TO INCREASE STUDENT LEARNING

The Taylor County School District is committed to providing a safe, supportive, unified environment that empowers students and educators to work collaboratively as successful life-long learners positively impacting our community.

School is not a building developed by data, but a place where relationships are built between people with a united purpose.

VISION & GOALS

The vision of the Taylor School District is to create the most appropriate environment in which ALL students can experience academic success and achieve their educational and career goals while becoming well-rounded members of our global community.

Together we will

- Improve academic achievement for all students in Taylor County Schools, as demonstrated by state assessment outcomes and other school-based measures.
- Align the district spending plan to support educational objectives, maintain safe environments conducive to learning, and recruit and retain highly qualified and diverse staff, while maintaining fiscal stability.
- Equip school environments and staff with the resources necessary to adequately prepare students for their future.
- Nurture high levels of mutual support and trust with all district stakeholders, students, staff, and families.

GUIDING PRINCIPLES

1. Ensure that all students - from preschool to adult - participate in various learning experiences that enable them to develop and demonstrate 21st-century skills, while exploring career paths that respond to industry needs and personal aspirations.

2. Create a positive, safe, solution-oriented environment that promotes student social, emotional and academic success.

3. Encourage mutually supportive, active partnerships between our schools, families and all stakeholders to maximize student potential and contribute to the continued improvement of the district.

4. Ensure that all students are educated in a safe learning environment that supports greater opportunities for student-teacher interaction, school connectedness and the social well-being of each student.

5. Ensure that resources are managed efficiently and effectively to achieve the district's goals.

TCSD aims to lead with **ambition**, foster positive **attitudes**, obtain optimal **attendance**, and provide rigorous academics in order to improve student **achievement**.

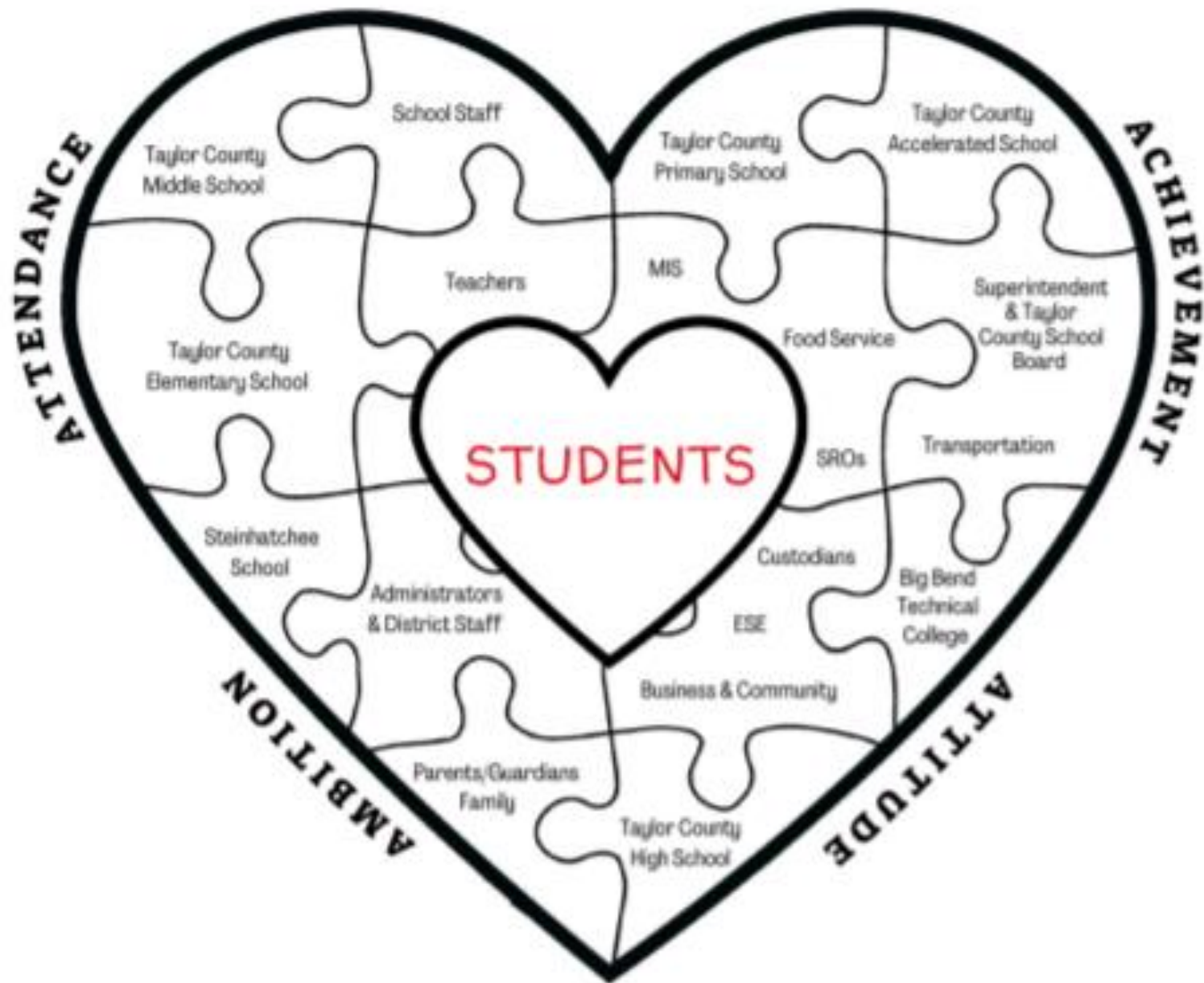
**ATTENDANCE,
ACHIEVEMENT,
AMBITION &
ATTITUDE**

Words of Wisdom: Herman Munster's Advice

I do not own any of this material (owned by CBS)! Just wanted to spread this little quote of wisdom. PS: This was taken from Season 1 - Episode: Eddie's Nickname.

[youtu.be](#)





2021-2022 School Level Plans to Elevate

Reading

&

Attendance

TAYLOR COUNTY PRIMARY SCHOOL'S

Plan to improve READING

- ▶ 120 minutes of uninterrupted reading K-2 from 7:55am-9:55am.
- ▶ Wheel teachers and additional staff to push into classroom to support reading and interventions.
- ▶ MTSS intervention support for VPK
- ▶ Curriculum Support
 - ▶ PD provided for new K-2 Curriculum
 - ▶ PD provided for preschool curriculum
- ▶ AR and Star
 - ▶ AR school wide.
 - ▶ Star for 1st and 2nd grades.
 - ▶ School wide incentives.

TAYLOR COUNTY PRIMARY SCHOOL'S

Plan to Improve ATTENDANCE:

- ▶ Rewards for Students:
 - ▶ Daily- Caught at school.
 - ▶ Bi-weekly- perfect attendance awards
 - ▶ Monthly perfect attendance celebration.
 - ▶ Grade level Competition for best average attendance.
 - ▶ Traveling Attendance Trophy
 - ▶ District Competition between schools.
 - ▶ Attendance award. Best average attendance.

TAYLOR COUNTY ELEMENTARY SCHOOL'S PLAN

To Improve READING

- ▶ 90-120 minutes of uninterrupted ELA instruction
- ▶ New ELA curriculum -Wonders
- ▶ Teacher/parent conferencing
- ▶ Accelerated Reader- rewards and goal setting
- ▶ Sunshine State Reader Competition
- ▶ New Teacher Mentor Program (site based)

TAYLOR COUNTY ELEMENTARY SCHOOL'S PLAN to Improve Attendance

DID YOU KNOW.....

Out of our Third Grade Level 1 students:

- 25 of 60 missed 10 or more days
- 19 of 25 missed 20 or more days
- 8 of 19 missed 30 or more days
- 6 of 8 missed 40 or more days

Incentives

- "Caught at school"
- Classroom rewards for weekly perfect attendance
- School wide monthly rewards
- Grade level celebrations
- District competition between schools
- Home Visits

Steinhatchee School's

Plan to Improve ATTENDANCE:

- ▶ **Target - 95% attendance for students and staff.**
- ▶ **Continue building community support and sponsorships.**
 - ▶ Daily school-wide drawing and "perfect day" drawings.
 - ▶ Attendance treats when classrooms reach "attendance" goal.
 - ▶ Monthly prize drawing for students with perfect attendance.
 - ▶ School-wide competition for best average attendance each month.
 - ▶ Traveling Attendance Trophy - District Competition between schools.
 - ▶ Proactive intervention for chronically absent students.

Steinhatchee School's

Plan to Improve READING:

- ▶ **Target - 75% learning gains in reading.**
 - ▶ Restructured K-2 ELA Team
 - ▶ New McGraw Hill "Wonders" ELA Curriculum with Professional Development
 - ▶ New HMH Read 180/System 44 Reading Intervention 3-5
 - ▶ Heggerty Phonics for K-2
 - ▶ Kendore Training Scholarship for multi-sensory ELA instruction
 - ▶ Weekly MTSS support consultation funded through TSSSA grant
 - ▶ Weekly meetings with new District MTSS Coordinator
 - ▶ Accelerated Reader Incentives
 - ▶ Collaboration with BGCA to extend reading opportunities after school

TAYLOR COUNTY MIDDLE SCHOOL'S

Plan to improve READING

- **Intensive Reading with Reading-Endorsed Teachers**
 - Data-driven approach using iReady progress monitoring
 - Identify lowest performing students and provide differentiated, targeted support
 - Will serve approximately 165 students
- **Peer Counseling**
 - Focuses on novel study units, reading strategies, and vocabulary building
 - Will serve most students not assigned an Intensive Reading course
- **MTSS Interventions**
 - Tier 2 (small-group) and tier 3 (individualized) support from faculty and staff pushing into classrooms
- **Curriculum and Professional Development**
 - Newly-adopted ELA curriculum aligned to B.E.S.T. standards (McGraw-Hill StudySync)
 - Curriculum mapping to promote vertical alignment
 - PD for ELA, Social Studies, and Science teachers to implement literacy in their content area and promote horizontal alignment
- **Schoolwide AR Program with Initiatives**

TAYLOR COUNTY MIDDLE SCHOOL'S

Plan to Improve ATTENDANCE:

- **Attendance Intervention Process**
 - Parent/Guardian notification of unexcused or unexplained absences
 - Conference request with parent(s)/guardians(s) if a pattern of non-attendance develops
 - Collaboration to develop solutions to improve attendance and best support student learning
- **PBS Team**
 - Leadership-assembled team to develop, implement, and monitor interventions to enhance student learning
 - Focuses on student attendance, academics, and conduct
- **Attendance Incentives & Rewards**
- **Student attendance drawings (bi-weekly)**
 - Student perfect attendance recognition (monthly)
 - Faculty and staff attendance incentives (monthly)
- **Best Average Attendance Competitions**
 - Classroom, grade-level, and district-level
 - Traveling attendance trophy

TAYLOR COUNTY HIGH SCHOOL's



- ❖ Plan to improve Reading-
 - ❖ Reading courses for students in 11th and 12th grades who need to meet graduation requirements
 - ❖ Reading course for 10th grade students to help them pass the Grade 10 ELA Test and meet their graduation requirement
 - ❖ Small group reading courses for level 1 students in 9th and 10th grades
 - ❖ Content area reading strategies used in ALL core classes

TAYLOR COUNTY HIGH SCHOOL's



- ❖ **Plan to improve Attendance**
 - ❖ Bi-weekly attendance drawings for students and staff
 - ❖ Monthly attendance incentives for students and staff by grade level
 - ❖ District competition between schools

TAYLOR COUNTY ACCELERATED SCHOOL

READING Emphasis:

Implement **30-45** minutes of **Reading** each day for all TAS Students

1. Targeted intervention reading instruction for Tier 2 and Tier 3 students
 - **Tier 2 students** typically need instruction that lasts anywhere from eight to fifteen weeks during small-group instruction with the teacher or teacher's aide.
 - **Tier 3 students** generally spend at least twenty weeks on their one-on-one tutoring instruction with the teacher or teacher's aide.
2. Implement **Vocabulary Journals** for 6th thru 8th students (All Classes)
3. Utilizes I-Ready/I-Ready Data: **My Path Lessons** will be implemented to provide targeted instruction to all student's strengths and areas of need. The utilization of AP1, AP2, & AP3 data assessment scores will determine adjustment of reading interventions and strategies for students.

TAYLOR COUNTY ACCELERATED SCHOOL

ATTENDANCE Emphasis:

1. Implement a daily attendance incentives for TAS students who are not tardy:

▶ **Accrue points weekly to attend "Rewards Room."**

2. Implement attendance incentives for TAS students by grade level bi-weekly:

▶ **Competition by Grade level (Monthly Pizza Party/TBD etc)**

3. Implement awards for teachers and students with 100% attendance rate each month:

▶ **Newspaper Recognition/Attendance Certificates awarded (Gift Card Donation)**

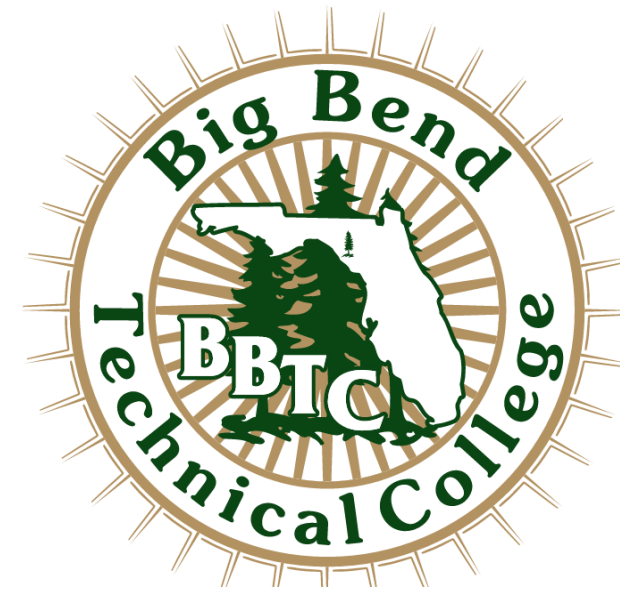
4. Implement award incentive for students with at least **95% attendance rate** each nine weeks:

▶ **Educational Field Trips**

NOTE: Implement or target truant students using the TAS truancy intervention plan for students less than an **85% daily attendance rate.**

BIG BEND TECHNICAL COLLEGE

- **Postsecondary Adult Career and Technical College**
 - 15 Career Certificate programs
 - Financial aid and scholarships available to those that qualify
 - Free dual enrollment for high school students (earn high school credit while earning hours toward a career certificate)
 - Job placement assistance



- **Adult Education and GED®**
 - Classes available (@ BBTC and Steinhatchee)
 - Day and night classes available
 - Scholarships available to those that qualify
 - Integrated (GED® and CTE enrollment available to those that qualify)

**Great careers
start here!**

