

NEW MILFORD BOARD OF EDUCATION
New Milford Public Schools
50 East Street
New Milford, Connecticut 06776

FACILITIES SUB-COMMITTEE
MEETING NOTICE

DATE:	February 2, 2016
TIME:	6:45 P.M.
PLACE:	Lillis Administration Building—Room 2

AGENDA

New Milford Public Schools Mission Statement

The mission of the New Milford Public Schools, a collaborative partnership of students, educators, family, and community, is to prepare each and every student to compete and excel in an ever-changing world, embrace challenges with vigor, respect and appreciate the worth of every human being, and contribute to society by providing effective instruction and dynamic curriculum, offering a wide range of valuable experiences, and inspiring students to pursue their dreams and aspirations.

1. Call to Order
2. Public Comment

An individual may address the Board concerning any item on the agenda for the meeting subject to the following provisions:

- A. A three-minute time limit may be allocated to each speaker with a maximum of twenty minutes being set aside per meeting. The Board may, by a majority vote, cancel or adjust these time limits.
- B. If a member of the public comments about the performance of an employee or a Board member, whether positive, negative, or neutral, and whether named or not, the Board shall not respond to such comments unless the topic is an explicit item on the agenda and the employee or the Board member has been provided with the requisite notice and due process required by law. Similarly, in accordance with federal law pertaining to student confidentiality, the Board shall not respond to or otherwise discuss any comments that might be made pertaining to students.

3. Discussion and Possible Action

- A. Turf Field Update
 - 1. Compliance Plan
- B. SMS Roof Project Update
 - 1. Skylight
- C. PCB Testing at SMS
- D. SNIS Catwalk

4. Items of Information

- A. NMHS Chiller Update
- B. Status of Moving Main Frame from Lillis to SNIS
- C. Overtime Update

5. Public Comment

An individual may address the Board concerning any item on the agenda for the meeting subject to the following provisions:

- A. A three-minute time limit may be allocated to each speaker with a maximum of twenty minutes being set aside per meeting. The Board may, by a majority vote, cancel or adjust these time limits.
- B. If a member of the public comments about the performance of an employee or a Board member, whether positive, negative, or neutral, and whether named or not, the Board shall not respond to such comments unless the topic is an explicit item on the agenda and the employee or the Board member has been provided with the requisite notice and due process required by law. Similarly, in

RECEIVED
TOWN CLERK
2016 JAN 29 P 12:59

NEW MILFORD, CT

accordance with federal law pertaining to student confidentiality, the Board shall not respond to or otherwise discuss any comments that might be made pertaining to students.

6. Adjourn

Sub-Committee Members: Robert Coppola, Chairperson
Angela C. Chastain
Bill Dahl
David A. Lawson

Alternates: Brian McCauley
J. T. Schemm

Memorandum

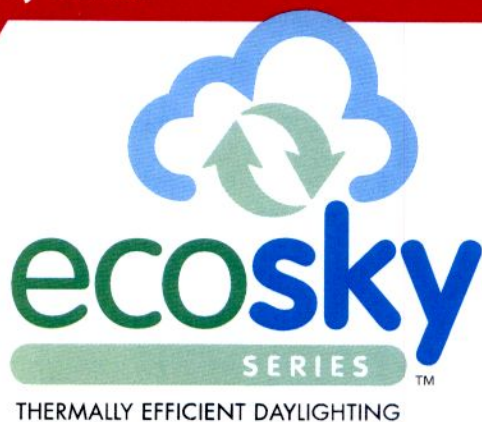
To: Facilities Sub Committee
CC: Joshua Smith, Interim Superintendent-Elect
From: Kevin Munrett, Facilities Manager
Date: 1/29/2016
Re: SMS Skylight Discussion

Attached please find recommendations for replacing the skylights at SMS as part of the roof replacement project.

Currently, the large skylight over the Library measures 3' x 89' which is an extremely large span. We are recommending the Board look into other suitable options which will maintain roof integrity while also keeping costs down.

The existing skylight is not OSHA rated. We are recommending that OSHA skylights be used for added safety and to simplify long term maintenance. The replacement cost is included in the scope of the project and changing the type of window will not impact construction costs.

I have included attachments from recommended skylight manufacturers for your review as well as roof penetration diagrams to illustrate the area in question.



SAFETY SCREENS RECOMMENDED



SATIN SKY GLAZING



Lumira
aerogel



**Meets IECC 2015 requirement
in all climate zones***



*EcoSky3 Model



HOT CLIMATES • ECOSKY™ (WITHOUT LUMIRA®)

ACRYLITE®
SATIN SKY GLAZING
OVER A SECOND CLEAR IMPACT
MODIFIED ACRYLIC DOME

ecosky™

- 100% haze – great light diffusion
- Utilizes an impact modified white acrylic outer dome with infrared blockers

High-Performance Light Diffusing Glazing

Our Acrylite® Satin Sky glazing is a powerful sun reflector which greatly reduces solar heat gain, making it ideal for both hot and cold climates. Satin Sky is impact modified, infrared blocking, light diffusing, and 100% haze white.



HOT & COLD CLIMATES • ECOSKY3™

ACRYLITE®
SATIN SKY GLAZING
DOMED OVER A

Lumira
aerogel

LUMIRA® AEROGEL
FILLED MULTIWALL
POLYCARBONATE PANEL

ecosky³™

Low Solar Heat Gain, Excellent Visible Light Transmission

By incorporating a 10mm Lumira® Aerogel panel with Acrylite® Satin Sky you get all the benefits of natural diffused light while providing superior thermal performance with excellent visible light transmission.

- Solar Heat Gain as Low as .34
- Best In Industry R-Value
- Glare-free, full spectrum diffused light
- "Green" product that's perfect for Cradle to Cradle designs
- Completely moisture resistant
- Will not support growth of mold, mildew or fungus
- Reduces sound transmission
- UV stable
- Performance will not deteriorate over time
- NFRC tested, rated and certified



FALL HAZARD. To prevent death or serious injury,
do NOT step, stand or sit on skylights.



wascoskylights.com



Curb Mount Dome (ECS)

ECS – Acrylite® Satin Sky Over Clear Impact Modified Acrylic, Curb-Mount

E3CS – Acrylite® Satin Sky Over 10 mm Lumira® Aerogel Filled Panel, Curb-Mount

PERFORMANCE VALUES

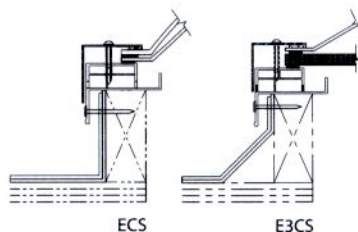
	ECS	E3CS
U-Factor	.64 BTU/HR-FT2-°F	.25 BTU/HR-FT2-°F
Solar Heat Gain Coefficient	.47	.34
Visible Light Transmission	61%	43%



ECS / E3CS



ECSP / E3CSP



ECS

E3CS

ECS MODEL AVAILABLE OPTIONS

- [3] Lumira® Aerogel
- [P] Pyramid Dome

Curb Mount Standard Sizes

Model [AVAILABLE OPTIONS]	O.D. of Curb
E[3]CS[P]-2828	25 1/4" x 25 1/4"
E[3]CS[P]-2836	25 1/4" x 33 1/4"
E[3]CS[P]-2852	25 1/4" x 49 1/4"
E[3]CS[P]-3636	33 1/4" x 33 1/4"
E[3]CS[P]-3652	33 1/4" x 49 1/4"
E[3]CS[P]-3676	33 1/4" x 72 1/2"
E[3]CS[P]-4242	40" x 40"
E[3]CS[P]-4280	40" x 78"
E[3]CS[P]-5252	49 1/4" x 49 1/4"
E[3]CS[P]-5276	49 1/4" x 72 1/2"
E[3]CS[P]-5296	49 1/4" x 92 1/2"
E[3]CS[P]-5555	51" x 51"
E[3]CS[P]-55102	51" x 99"
E[3]CS[P]-6060	58" x 58"
E[3]CS[P]-6476	60 1/2" x 72 1/2"
E[3]CS[P]-6496	60 1/2" x 92 1/2"
E[3]CS[P]-7272	71" x 71"

Deck Mount Dome (ECA)

ECA9 or 12 – Acrylite® Satin Sky Over Clear Impact Modified Acrylic, Deck-Mount, 9" or 12" High Curb

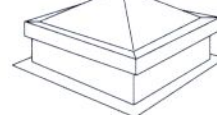
E3CA9 or 12 – Acrylite® Satin Sky Over 10 mm Lumira® Aerogel Filled Panel, Deck-Mount, 9" or 12" High Curb

PERFORMANCE VALUES

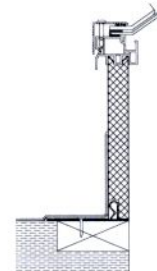
	ECA	E3CA
U-Factor	.82 BTU/HR-FT2-°F	.45 BTU/HR-FT2-°F
Solar Heat Gain Coefficient	.47	.34
Visible Light Transmission	62%	43%



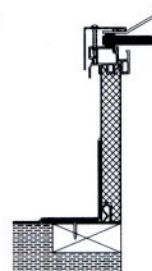
ECA / E3CA



ECAP / E3CAP



ECA



E3CA

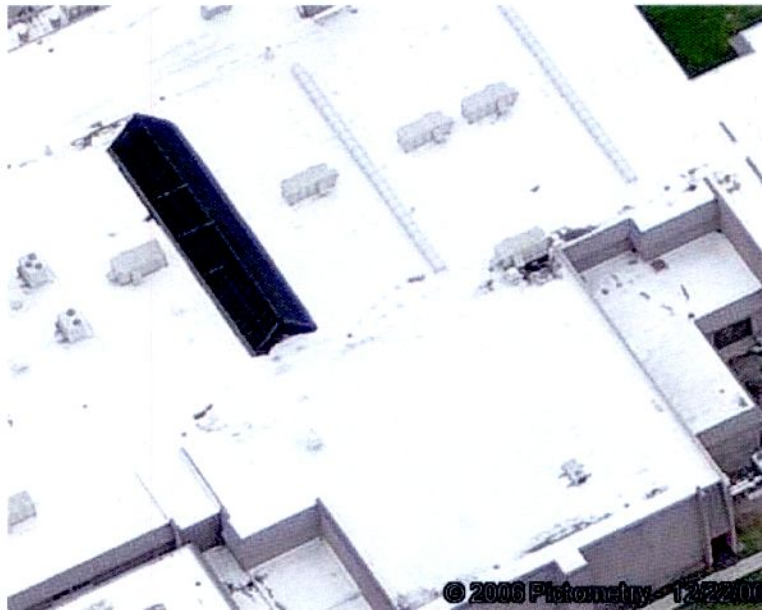
ECA MODEL AVAILABLE OPTIONS

- [3] Lumira® Aerogel
- [P] Pyramid Dome

Deck Mount Standard Sizes (9" or 12" high curbs standard, 4" or 18" available.)

Model [AVAILABLE OPTIONS]	Rough Opening
E[3]CA[P]-2828	22 1/4" x 22 1/4"
E[3]CA[P]-2836	22 1/4" x 30 1/4"
E[3]CA[P]-2852	22 1/4" x 46 1/4"
E[3]CA[P]-3636	30 1/4" x 30 1/4"
E[3]CA[P]-3652	30 1/4" x 46 1/4"
E[3]CA[P]-3676	30 1/4" x 69 1/2"
E[3]CA[P]-4242	37" x 37"
E[3]CA[P]-4280	37" x 75"
E[3]CA[P]-5252	46 1/4" x 46 1/4"
E[3]CA[P]-5276	46 1/4" x 69 1/2"
E[3]CA[P]-5296	46 1/4" x 89 1/2"
E[3]CA[P]-5555	48" x 48"
E[3]CA[P]-55102	48" x 96"
E[3]CA[P]-6060	55" x 55"
E[3]CA[P]-6476	57 1/2" x 69 1/2"
E[3]CA[P]-6496	57 1/2" x 89 1/2"
E[3]CA[P]-7272	68" x 68"

REPORT IMAGES



North View



East View

PENETRATIONS

Penetrations Notes Diagram

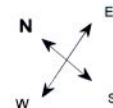
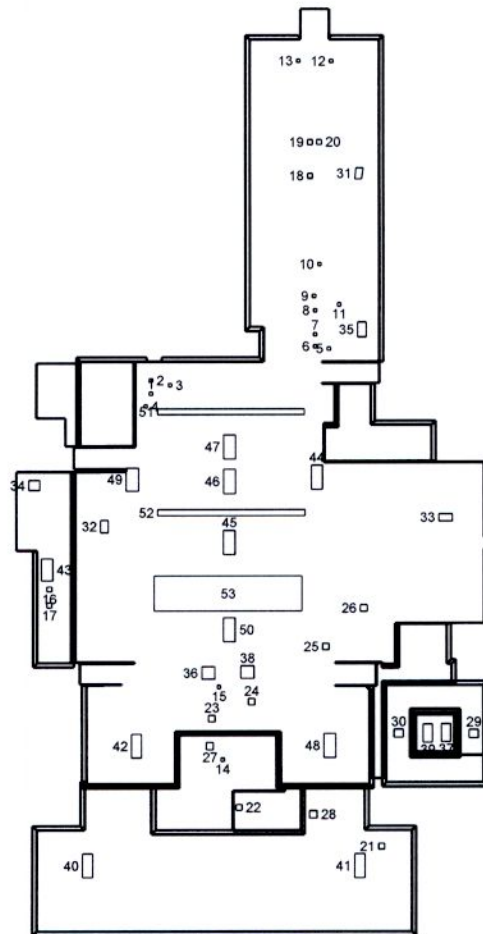
Penetrations are labeled from smallest to largest for easy reference.

Total Penetrations: 53

Total Penetrations Perimeter = 1,656 ft

Total Penetrations Area: 4,311 sq ft

Total Roof Area Less Penetrations = 104,110 sq ft



Note: Any measured penetration smaller than 3x3 feet may need field verification. Accuracy is not guaranteed. The total penetration area is not subtracted from the total roof area.

CUSTODIAN/MAINTENANCE OVERTIME

	2014-15			2015-16			Variance	
	Monthly	Total		Monthly	Total		Monthly	
CUSTODIAL OVERTIME								
July	8,547	8,547		48,811	48,811		40,264	
August	4,867	13,414		36,844	85,655		31,977	
September	13,875	27,289		7,726	93,381		-6,149	
October	8,511	35,800		9,709	103,090		1,198	
November	9,011	44,811		8,109	111,199		-902	
December	13,330	58,141		11,337	122,536		-1,993	
January	11,012	69,153		7,050	129,586		-3,962	
February	19,211	88,364		0				
March	17,484	105,848		0				
April	10,623	116,471		0				
May	18,796	135,267		0				
June	14,792	150,059		0			80,906	
				0				
Budget		200,000			225,536			
Balance Remaining		49,941			103,000			

CUSTODIAN/MAINTENANCE OVERTIME

	2014-15			2015-16			Variance	
	Monthly	Total		Monthly	Total		Monthly	
MAINTENANCE OVERTIME								
July	3,100	3,100		16,088	16,088		12,988	
August	8,517	11,617		18,099	34,187		9,582	
September	8,178	19,795		11,450	45,637		3,272	
October	10,758	30,553		10,810	56,447		52	
November	8,585	39,138		1,887	58,334		-6,698	
December	9,367	48,505		1,123	59,457		-8,244	
January	10,741	59,246		7,460	66,917		-3,281	
February	24,774	84,020		0				
March	13,696	97,716		0				
April	11,004	108,720		0				
May	14,321	123,041		0				
June	10,541	133,582		0			74,336	
Budget		86,719			96,719			
Balance Remaining		-46,863			37,262			