

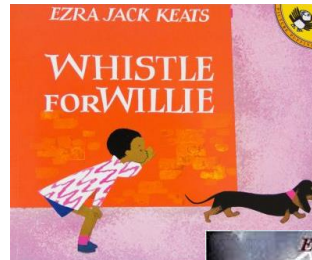


library news January

BOOK SUGGESTIONS

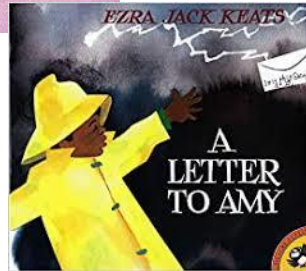
Whistle For Willie

By: Ezra Jack Keats
AR Quiz #: 17550



A Letter to Amy

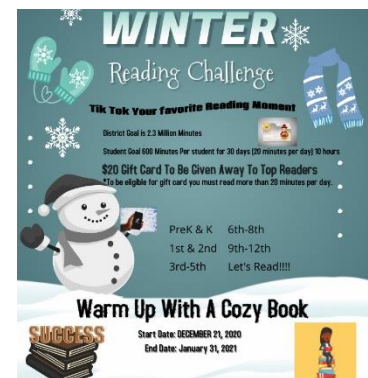
By: Ezra Jack Keats
AR Quiz #: 27506



reminders

Winter Reading Challenge

[:::Details Here:::](#)



What we are learning

Making Connections: We will be doing an Author Study during which we will read books written and illustrated by Ezra Jack Keats (*A Snowy Day*, *Whistle for Willie*, and *A Letter to Amy*). Students will be asked to make inferences from the illustrations as we read and compare the different stories to each other.

RL.K.3: With prompting and support, identify characters, setting, and major events in a story.

RL.K.7: With prompting and support, describe the relationship between illustrations and the story in which they appear (e.g. what moment in the story an illustration depicts)



Webb Prep Library

Graceann Herzog, Librarian

gherzog@gpsdk12.com

Be sure to check out the Library Website for resources, read-alouds, and so much more!

<https://www.webbelementary.com/library>

