

City Level Public Health Data for Schools

Mohave County Department of Public Health

November 23, 2020

NOTE: Data shown in this report have been updated to reflect criteria used by the Arizona Department of Health Services to produce state and county school benchmark data. For this Mohave County Department of Public Health report, positive tests now include both antigen and PCR tests. Cases now include both probable and confirmed. Criteria were applied retroactively so all weeks shown in the charts are comparable. Please note that these figures may not match figures from other sources as different criteria may have been used (e.g., the Mohave County COVID-19 Response Hub shows confirmed cases only.)

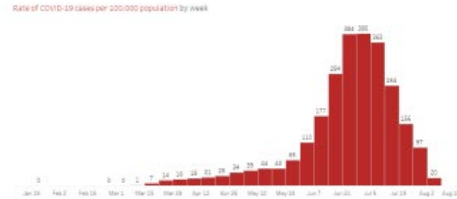


Arizona Department of Health Services (ADHS) provided guidelines to assist in decision making for schools. Mohave County Public Health Services did an analysis by city. Cities not shown did not have enough data to make reliable conclusions and to protect confidentiality.

Understanding the Benchmarks

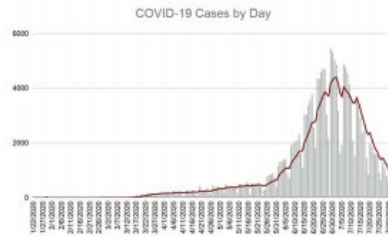
Cases

Benchmark: Two weeks below 100 cases per 100,000 (not including the current week)



OR

A decline in weekly average cases for two consecutive weeks (not including the current week)

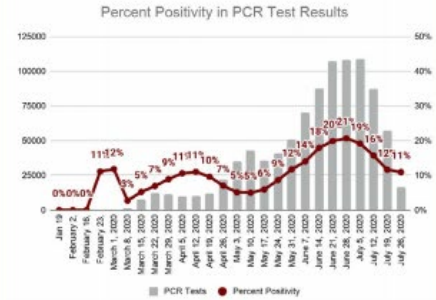


Data Source: ADHS MEDSIS Confirmed and Probable Cases

Available by: County

Percent Positivity

Benchmark: Two weeks with percent positivity below 7% (not including the current week)



Data Source: ADHS Electronic Laboratory Data

Available by: County

COVID-like Illness

Benchmark: Two weeks with hospital visits due to COVID-like illness below 10%



Data Source: BioSense Syndromic Surveillance Platform

Available by: BioSense Region

- **Northern:** Apache, Coconino, Navajo, Yavapai Counties
- **Central:** Gila, Maricopa, Pinal Counties
- **Southeastern:** Cochise, Graham, Greenlee, Pima, Santa Cruz Counties
- **Western:** La Paz, Mohave, Yuma Counties

Using the Data Dashboard

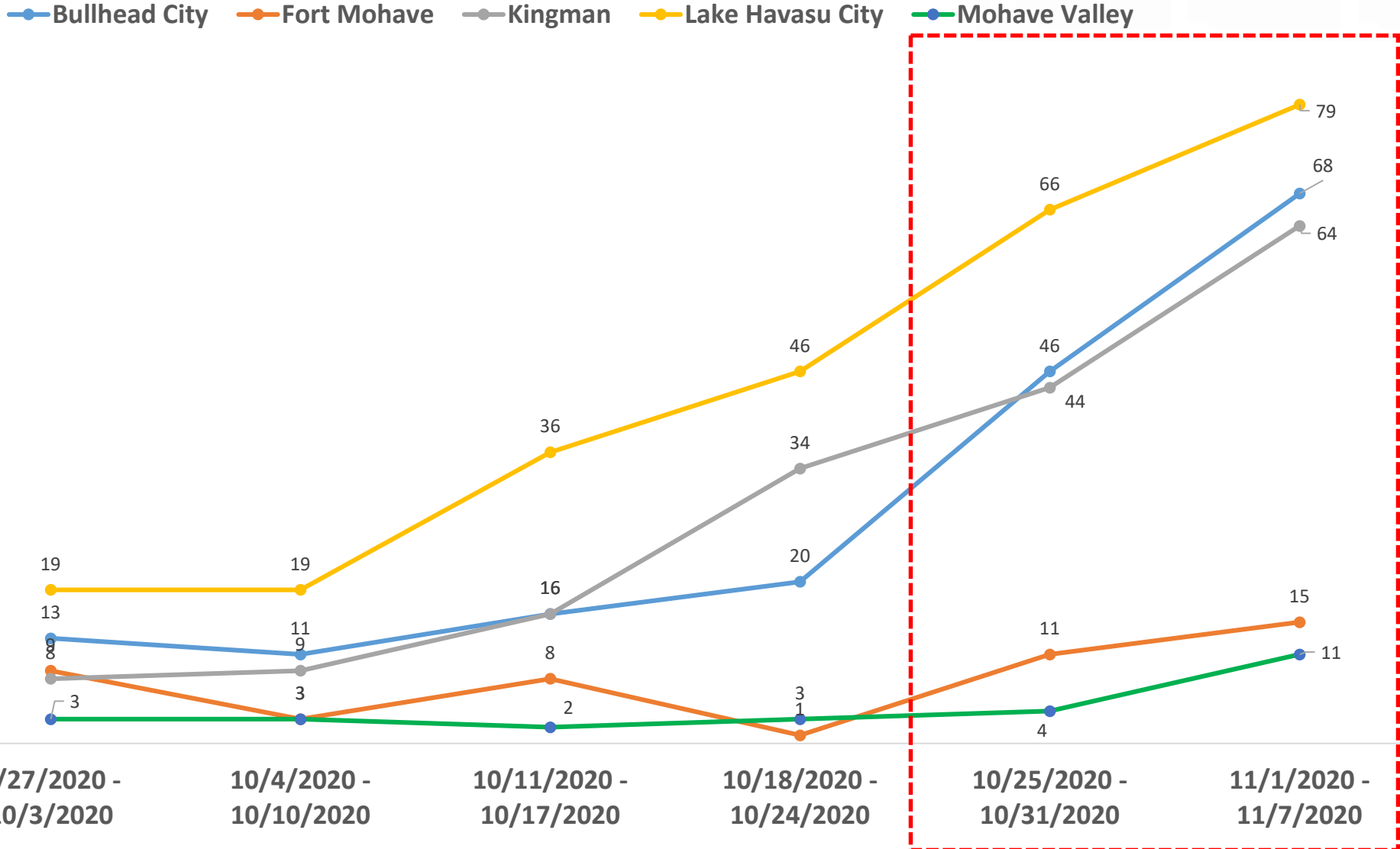
The ADHS dashboard will be updated every Thursday for the data covering the two-week period ending 12 days earlier. The table below provides examples using the August and September dashboard updates with the data time period. Dashboard updates will continue beyond the dates in the table.

| Dashboard Update | Date Time Period |
|-------------------|--------------------------------|
| November 12, 2020 | 10/25 – 10/31 11/01 – 11/07 |
| November 19, 2020 | 11/01 – 11/07 11/08 – 11/14 |
| November 26, 2020 | 11/08 – 11/14 11/15 – 11/21 |
| December 3, 2020 | 11/15 – 11/21 11/22 – 11/28 |
| December 10, 2020 | 11/22 – 11/28 11/29 – 12/05 |

Arizona Department of Health Services (ADHS) suggests reviewing data from previous weeks due to lag in reporting. Most recent weeks are highlighted in upcoming charts.

Cases by City by Week

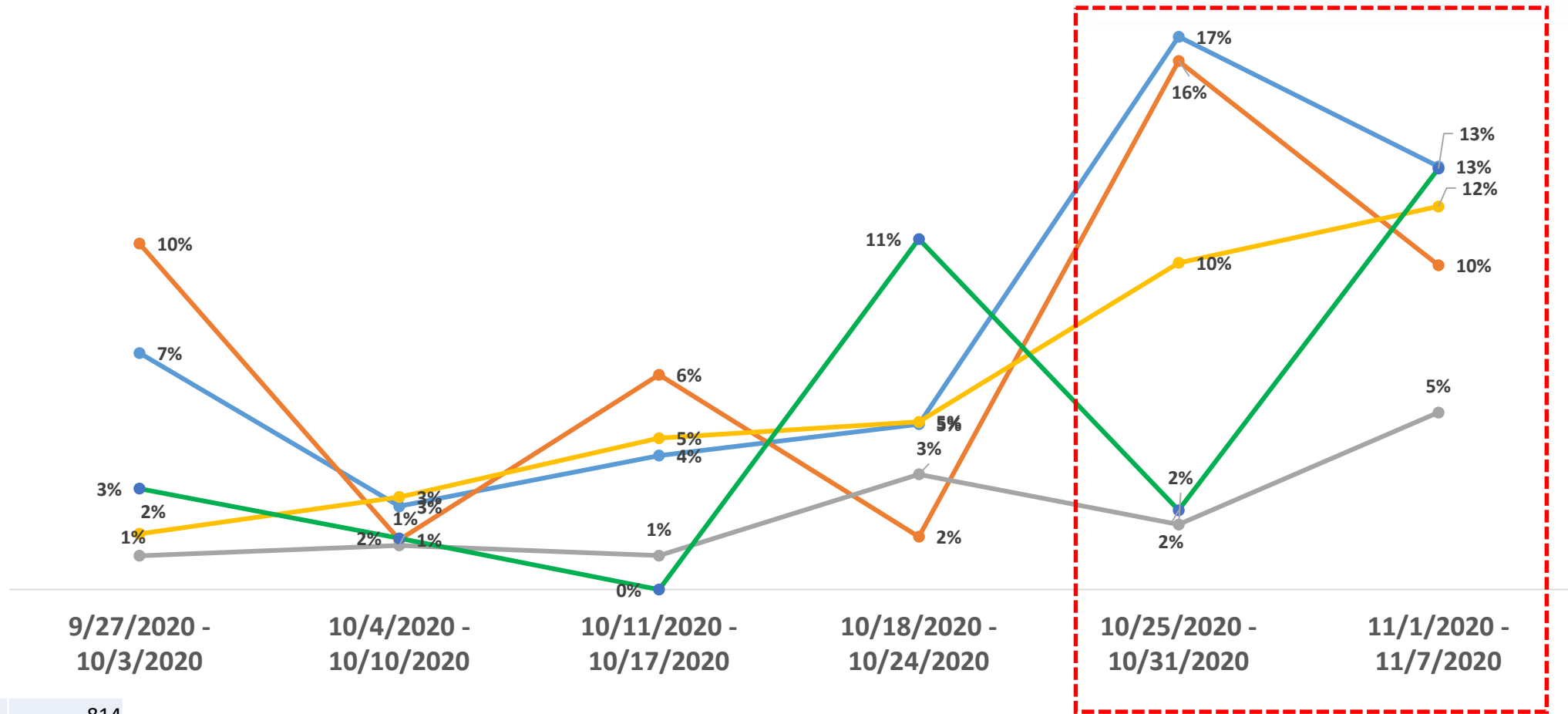
Confirmed & Probable Cases by Week of Diagnosis (City of Residence)



Percent of All COVID-19 PCR & Antigen Tests That Were Positive By Date Test Specimen Was Collected

— Bullhead City — Fort Mohave — Kingman — Lake Havasu City — Mohave Valley

Percent Positivity



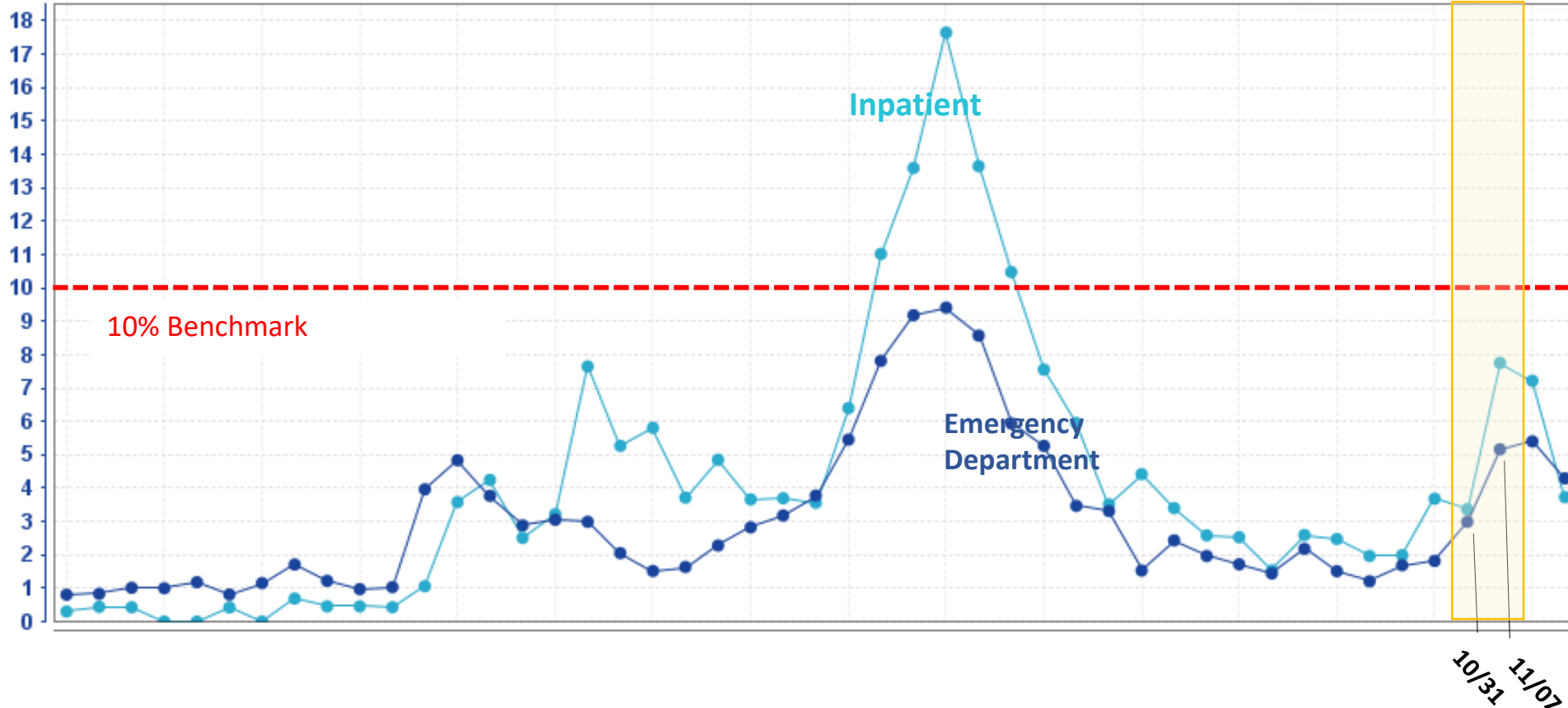
| | |
|------------------|------|
| BULLHEAD CITY | 814 |
| FORT MOHAVE | 217 |
| KINGMAN | 1405 |
| LAKE HAVASU CITY | 1044 |
| MOHAVE VALLEY | 129 |

Number of total tests done in the most recent 2-week period are shown to the left. Fewer tests make the results less statistically reliable. Use with caution and use in conjunction with overall Mohave County rates (shown on ADHS School Benchmarks Dashboard).

Percent of Emergency Department and Inpatient Visits That Are Among Patients with COVID-like Illness - Mohave County



Weekly Percent of Mohave County CLI ED and Inpatient Visits



Weeks to consider in highlighted yellow area

COVID-Like Illness

COVID-like Illness (CLI) Trend: The National Syndromic Surveillance Program's BioSense Platform ESSENCE tool detects Coronavirus-like illness visits by identifying key terms and codes within the chief complaint field (i.e., the patient's stated reason for visit), and discharge diagnosis code field (i.e., ICD-10-CM codes). Coronavirus-like illness visits are displayed as a percentage of total hospital visits by week and monitored for trends. **Caveats and Limitations:** These data have limitations that must be considered when interpreting findings. Variability may occur day to day in the capture and submission of data to the BioSense Platform. Not all hospitals participate in the BioSense Platform, so visits to non-participating hospitals are not available in the data. Very limited data from select urgent care clinics participating as a pilot project.