

Annual Report 2019 - 2020

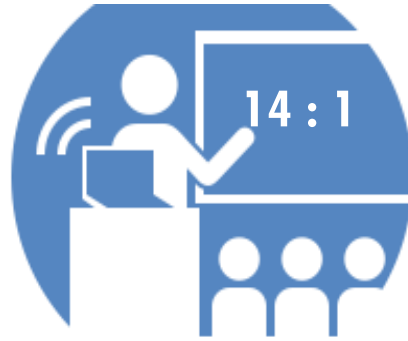


PINE BLUFF
SCHOOL DISTRICT



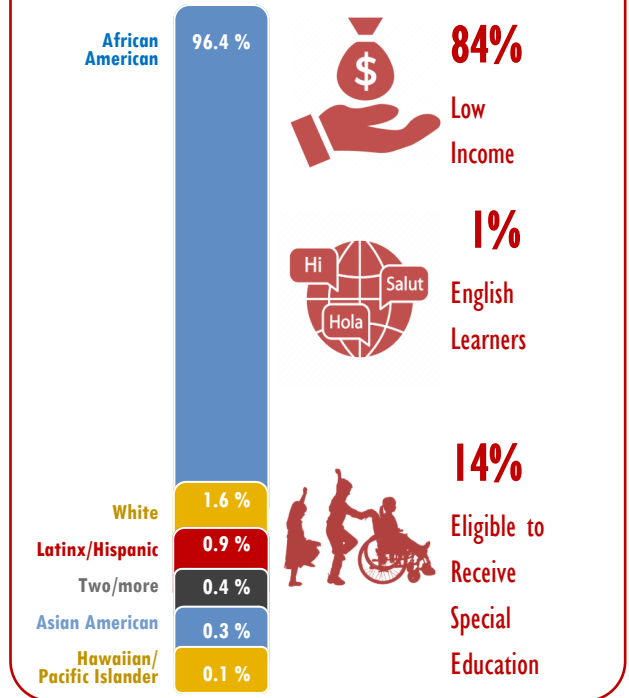
Enrollment & Revenue Trends

YEAR	ENROLLMENT	REVENUE
2019-2020	3,035	\$ 31,706,715.89
2018-2019	3,182	\$ 33,034,933.70
2017-2018	3,648	\$ 34,429,985.10
2016-2017	3,912	\$ 35,332,035.06
2015-2016	4,016	\$ 35,773,761.52



Student per Teacher Ratio

Student Demographics



2019 ACT ASPIRE Results

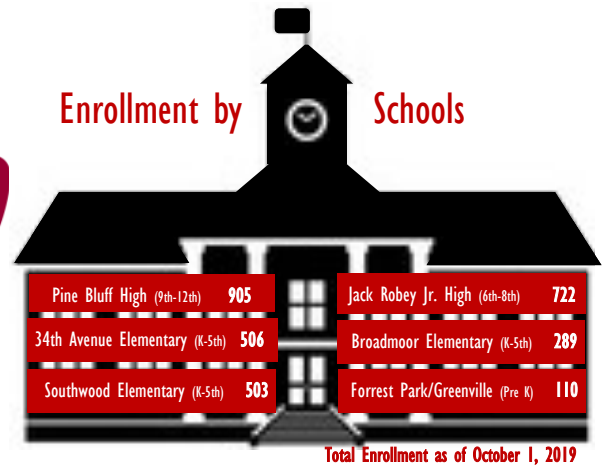
GRADE LEVELS		3 RD	4 TH	5 TH	6 TH	7 TH	8 TH	9 TH	10 TH
ENGLISH	District	47.1	35.4	47.6	45.6	44.3	57.1	33.0	32.8
	State	72.4	69.6	73.3	72.8	78.4	74.1	58.6	59.5
MATHEMATICS	District	30.3	18.3	14.6	21.6	8.9	15.8	10.9	5.5
	State	62.1	53.8	49.2	53.7	47.7	47.7	35.8	29.2
SCIENCE	District	11.5	9.2	9.0	13.7	12.3	14.3	10.3	8.9
	State	39.4	42.2	40.8	45.8	42.9	42.6	35.0	33.0
READING	District	13.1	10.5	14.2	12.0	10.6	30.2	12.7	11.0
	State	38.3	45.3	41.1	43.1	39.2	53.1	37.4	32.2

2019 - 2020 Fiscal Award Notification

Title I, Part A	\$ 2,353,500.59
Title VI-B, Special Education	\$ 1,033,595.54
Title II-A	\$ 197,549.67
Title IV-Student Support/Academic Enrichment	\$ 169,781.93
NSL	\$ 3,240,233.00



Enrollment by Schools



Certified Staff

242



459
EMPLOYEES

Classified Staff

217

2019 State and District ACT Results

SUBJECT AREAS	READINESS BENCHMARK	STATE AVERAGES	DISTRICT AVERAGES
ENGLISH	18	17.9	13.0
MATHEMATICS	22	17.9	15.0
READING	22	18.9	14.6
SCIENCE	23	18.6	14.9
COMPOSITE AVERAGES			
STATE	18.5	14.5	DISTRICT

SYSTEM GOAL: **OUTSTANDING ACADEMIC ACHIEVEMENT FOR ALL SCHOLARS**