



Kansas School for the Deaf Outreach Department *Deaf Mentor Program* *Families with D/HH children aged birth - 5*



WHAT the Deaf Mentor will provide:

- Ongoing home visits with an individual deaf mentor
- Use of National SKI-HI Deaf Mentor Curriculum
- Service based on family's individual needs and goals
- A bridge between the family and Deaf Culture through events and activities



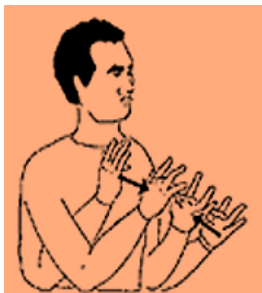
What you will LEARN:

- What it is like to be deaf in a hearing world
- How to create a bilingual environment for your child
- American Sign Language (ASL)
- How to interact with your child
- Deaf Culture



WHO can sign up:

- Parents of children who are deaf or hard of hearing (birth – 5)
- Residents of the following towns/counties and surrounding areas:
 - Johnson County
 - Lawrence
 - Leavenworth
 - Wyandotte Country
 - Topeka
 - Wichita



For more information, or to sign up for the Deaf Mentor Program,
please **CONTACT**:

Twila Latini, Deaf Mentor Coordinator

tlatini@kssdb.org or 913.324.5811

SoundBeginnings

Newborn Hearing Screening Program