

## 21st Century Healthcare Occupations

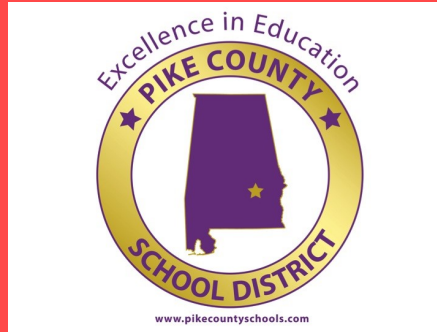
According to the U.S. Bureau of Labor Statistics (2015), healthcare and healthcare related professions are expected to have unprecedented growth over the next 10 years, with an overall increase of 6.5% or 9.8 million jobs.



"I've learned that people will forget what you said, people will forget what you did, but people will never forget how you made them feel."

Maya Angelou

For more information regarding the Pike County Schools Exercise & Health Academy or any other academy, contact your high school guidance counselor.



The Pike County Virtual High School does not discriminate on the basis of race, color, national origin, sex, disability, or age in its programs and activities and provides equal access to the Boy Scouts and other designated youth groups.

Please contact **Dr. Mark Head** at **(334) 566-**



**Superintendent:**

Dr. Mark Bazzell

[mbazzell@pikecountyschools.com](mailto:mbazzell@pikecountyschools.com)

**Administrative Assistant to the Superintendent:**

Dr. Mark Head

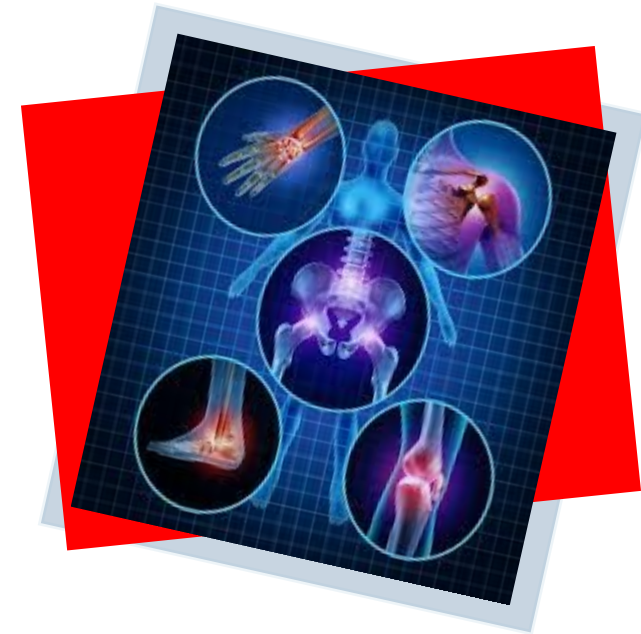
[mhead@pikecountyschools.com](mailto:mhead@pikecountyschools.com)

**Program Director:**

Jeff McClure

[jmclure@pikecountyschools.com](mailto:jmclure@pikecountyschools.com)

## Exercise & Health Academy



### Pike County School District

101 West Love Street

Troy, AL 36081

District Phone: (334) 566-1850

CA<sup>3</sup>L Phone: (334) 566-5396

[www.pikecountyschools.com](http://www.pikecountyschools.com)



## What does it take?

For consideration into the Exercise & Health Academy,

students must:

- Enroll in a Pike County School
- Apply in the 9th grade
- Have a GPA of 3.0 or higher
- Have ACT or ACCUPLACER Scores of:
  - ACT
    - 20 or higher in English/Writing
    - 23 or higher in Mathematics
  - ACCUPLACER
    - English 1101 qualifying score
    - Math 1105 qualifying score
- Good attendance
- Good discipline/conduct
- Overall Good Standing with their school
- Submit completed academy Application
- Current transcript
- One (1) administrator recommendation
- Three (3) teacher recommendations
- Write an essay – 125-200 word explaining why you would be an excellent candidate for one of our academies.



“Excellence in Education”  
Pike County Schools

# EXERCISE & HEALTH

Semester	Course Schedule*
Fall Semester Sophomore Year (9 hours)	ART 1133 (3) Visual Arts IDS 2200 (3) Crossroads: Sophomore Interdisciplinary KHP 2240 (3) Personal and Community Health
Spring Semester Sophomore Year (6 hours)	SCI 2233 (3) Physical Science SCI L233 (1) Physical Science Lab KHP 2202 (2) First Aid and Safety and CPR
Fall Semester Junior Year (8 hours)	ENG 1101 (3) Composition and Modern English I HIS 1111 (3) US History I KHP 2260 (2) Applied Fitness Concepts
Spring Semester Junior Year (9 hours)	ENG 1102 (3) Composition and Modern English II HIS 1112 (3) US History II KHP 2211 (3) Human Nutrition
Summer Term Junior Year (7 hours)	IS 2241 (3) Computer Concepts and Application BIO 1100 (3) Principles of Biology BIO L100 (1) Principles of Biology Lab
Fall Semester Senior Year (12 hours)	ENG 2205 (3) World Literature I POL 2241 (3) American National Government MTH 1105 (3) Intermediate College Algebra KHP 3360 (3) Physiological Principles of Body Systems
Spring Semester Senior Year (12 hours)	ENG 2206 (3) World Literature II ECO 2251 (3) Principles of Macroeconomics MTH 1112 (3) Pre-Calculus Algebra KHP 3395 (2) Care and Prevention of Athletic Injury KHP Elective (1)
<b>63 Total Hours</b>	*Note—program of study is subject to change based on the needs of Troy University and/or the Pike County School System.