

Chapter 4

Test review



1.

- **When is driving in a bicycle lane allowed?**

When preparing for a turn.





2.

- **When is it illegal to pass a school bus?**
 - a. During rush hour to speed up traffic**
 - b. When the stop arm is extended.**
 - c. In town**
 - d. It is always illegal to pass a school bus**

When the stop arm is extended.





3.

- **When an emergency vehicle displaying flashing red lights and sounding a siren approaches your vehicle on a two lane road you must:**

Pull to the right and stop



4.

- **Which of the following is not an emergency vehicle?**
 - a. A van with hazard lights flashing.**
 - b. Ambulance with red lights flashing.**
 - c. Police with red lights flashing.**
 - d. Fire truck reversing on an interstate.**

A van with hazard lights flashing.





5.

- When approaching a flashing red light:

Treat it the same as a stop sign.



6.

- **As a pedestrian walking on the road it is best to:**

**Walk on the left side of the road,
facing traffic.**





7.

- **When two vehicles reach the intersection at the same time, and an “all-way” stop sign controls the intersection, who must yield?**

The driver on the left must yield the right-of-way to the vehicle on the right.





8.

- **When stopping at a railroad crossing, stop your vehicle:**

At least 10 feet from the nearest rail or gate.



9.

- **On average how long does it take to pass a commercial vehicle traveling on a level highway?**
 - The same amount of time it takes to pass other vehicles.**
 - 1-3 seconds longer**
 - 3-5 seconds longer**
 - In Minnesota it is illegal to pass a commercial vehicle traveling on the highway.**

3-5 seconds longer





10.

- **If a pedestrian is in an unmarked crosswalk:**

Stop and wait until the pedestrian has passed your lane of traffic.



11.

- **When following a motorcycle your following distance should be:**
 - a. At least 2 seconds behind.**
 - b. Less than the following distance of a car.**
 - c. The same or greater than the following distance of a car.**
 - d. At least the length of 3 motorcycles behind.**

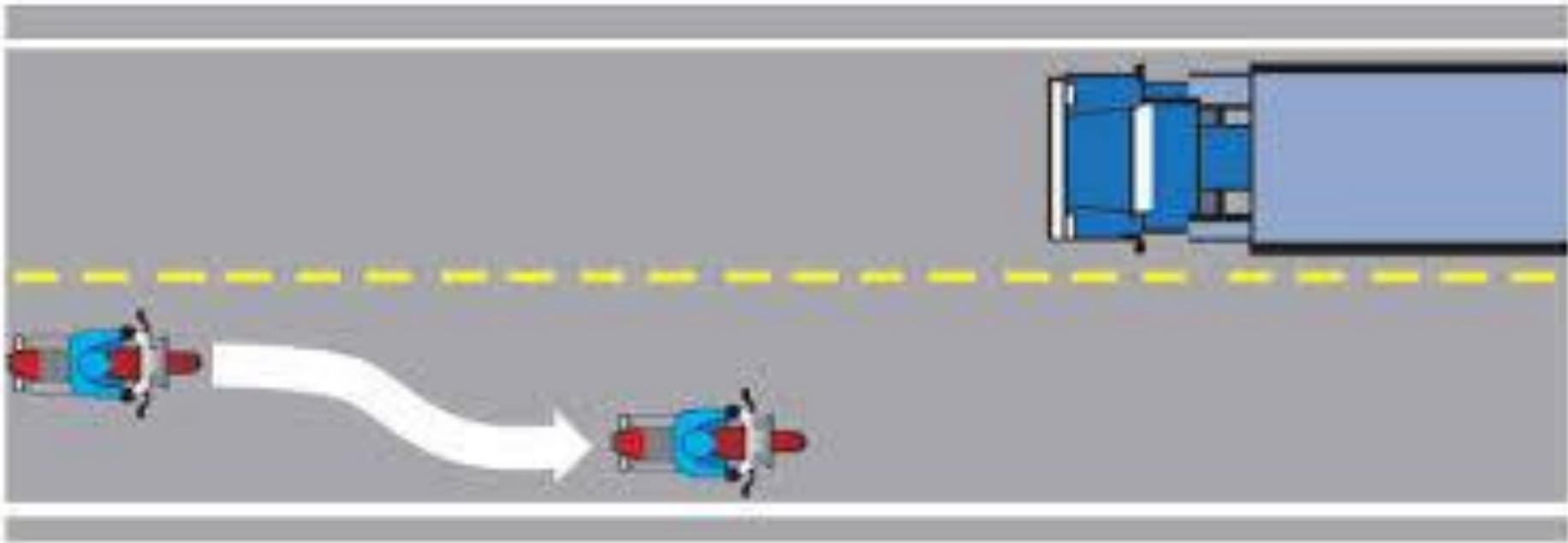
The same or greater than the following distance of a car.



12.

- **When a commercial vehicle is passing you on the left, it is best to:**
 - a. Remain at a constant speed and stay to the left of your lane**
 - b. Remain at a constant speed and stay to the right of your lane.**
 - c. Slow down and stay to the left of your lane**
 - d. Slightly reduce speed and stay to the right of your lane.**

Slightly reduce speed and stay to the right of your lane.



13.

- You must be at least _____ feet away from the railroad crossing before completing a pass.

100



14.

- You are approaching an uncontrolled “T” intersection as another vehicle approaches from the right. The right-of-way is granted to whom?

The vehicle on your right.



15.

- **A line of children are crossing the road ahead of you and you notice a gap between a few of them. You should:**
 - a. Slowly drive through the gap.**
 - b. Quickly drive through the gap.**
 - c. Honk your horn to warn the children you are going to drive through the gap.**
 - d. Wait until all of the children have crossed the road**

Wait until all of the children have crossed the road



16. T or F

- **The stopping distance for a train is equal to that of a car.**

False



© Stephen Huntley

17. T or F

- **Ambulances are equipped with yellow and red lights the flash alternately to warn drivers.**

False



18. T or F

- **Because of their large size commercial vehicles often appear to be traveling at slower speeds than they actually are.**

True



19. T or F

- **When a funeral procession identifies itself through the use of headlights or hazard lights, you must yield to the entire procession.**

True



20. T or F

- **You are not required to stop for an emergency vehicle displaying red flashing lights and sounding a siren if there is a median strip between your vehicle and the emergency vehicle.**

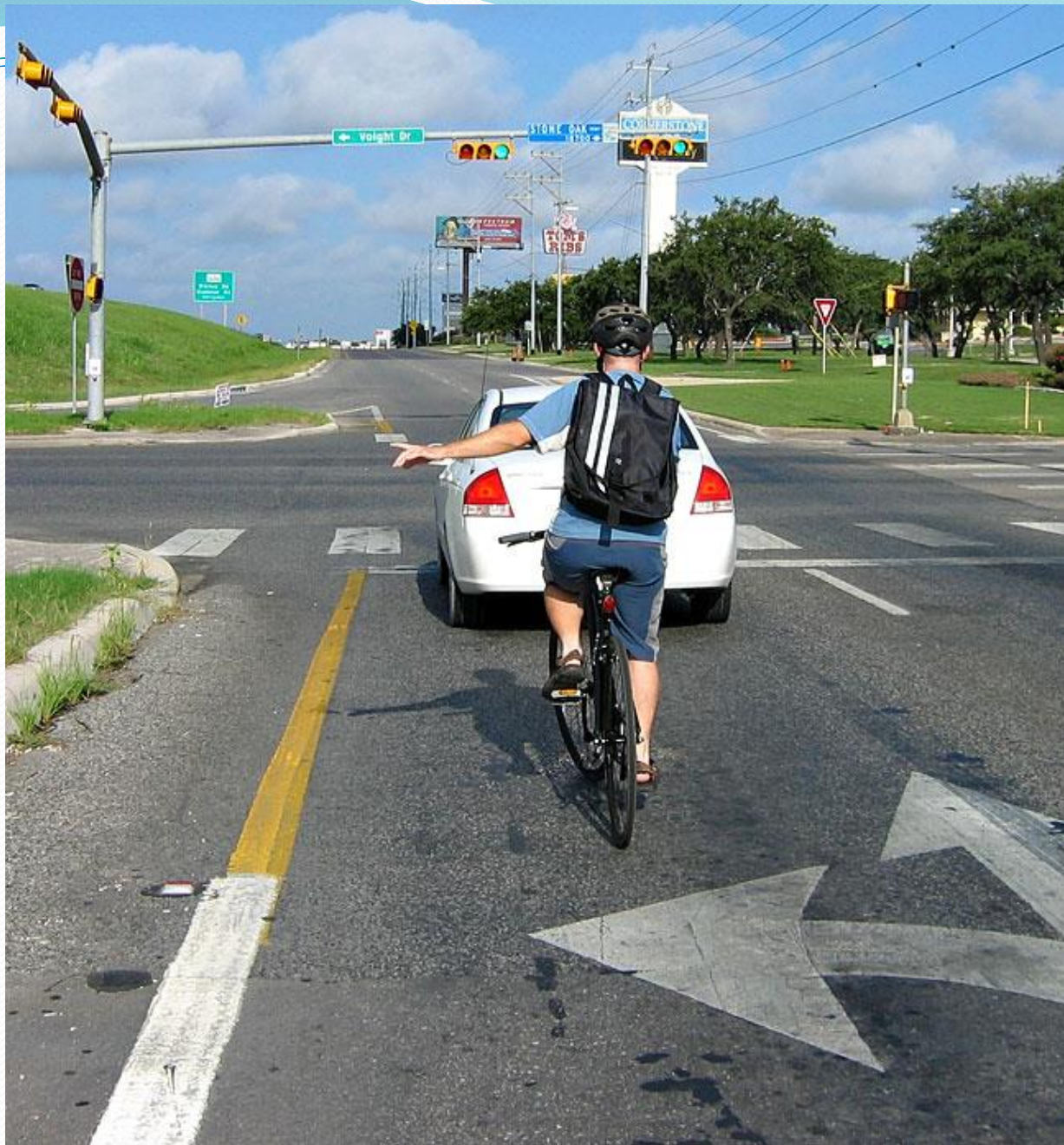
True



21. T or F

- **Bicycles are legal vehicles on Minnesota roads and they share the same rights and responsibilities as other vehicles.**

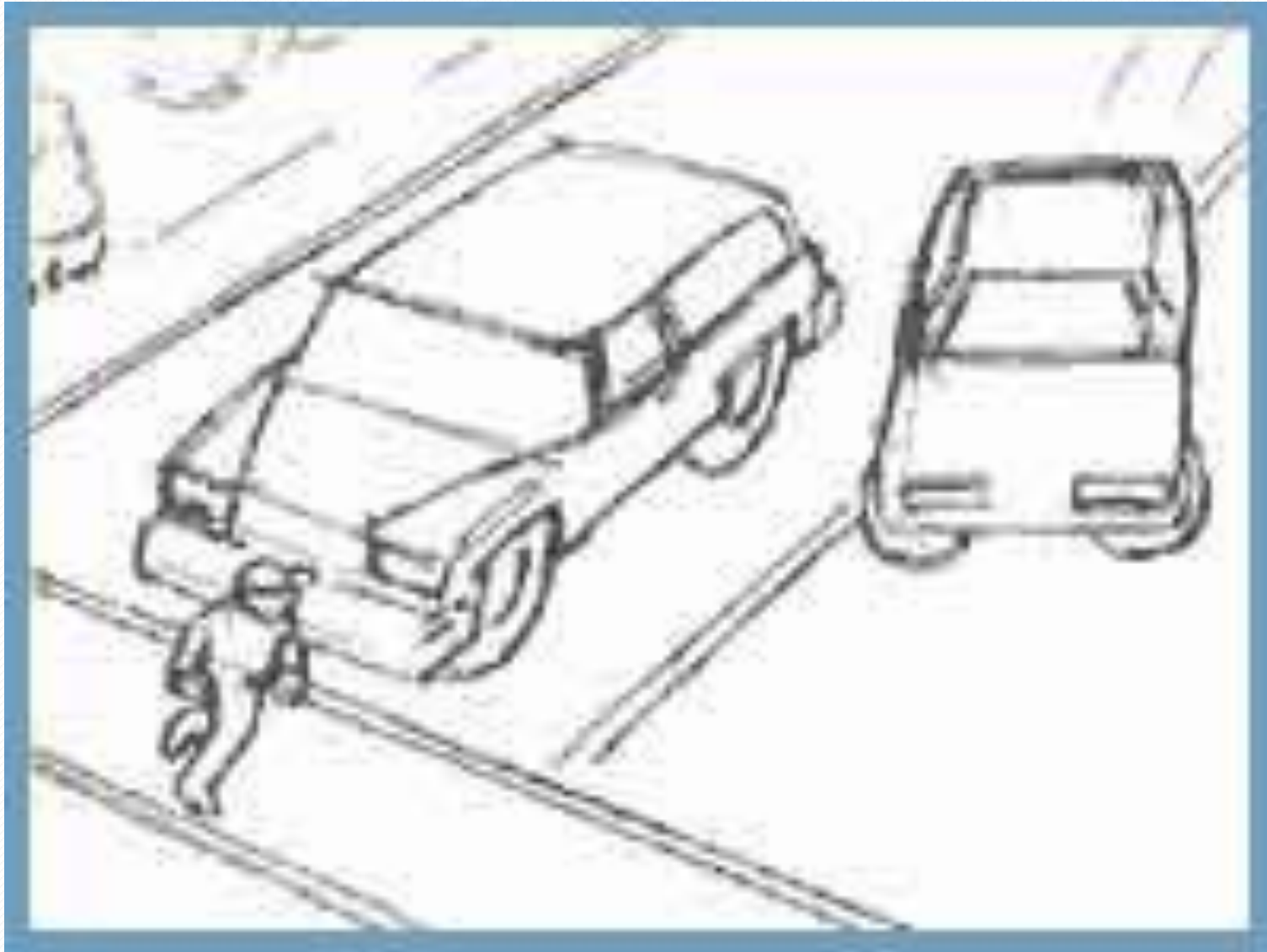
True



22. T or F

- **It is illegal to pass another vehicle that is stopped for a pedestrian.**

True



23. T or F

- **If a blind person is waiting at a crosswalk, it is a good idea to honk and rev the engine to let them know you are at the intersection.**

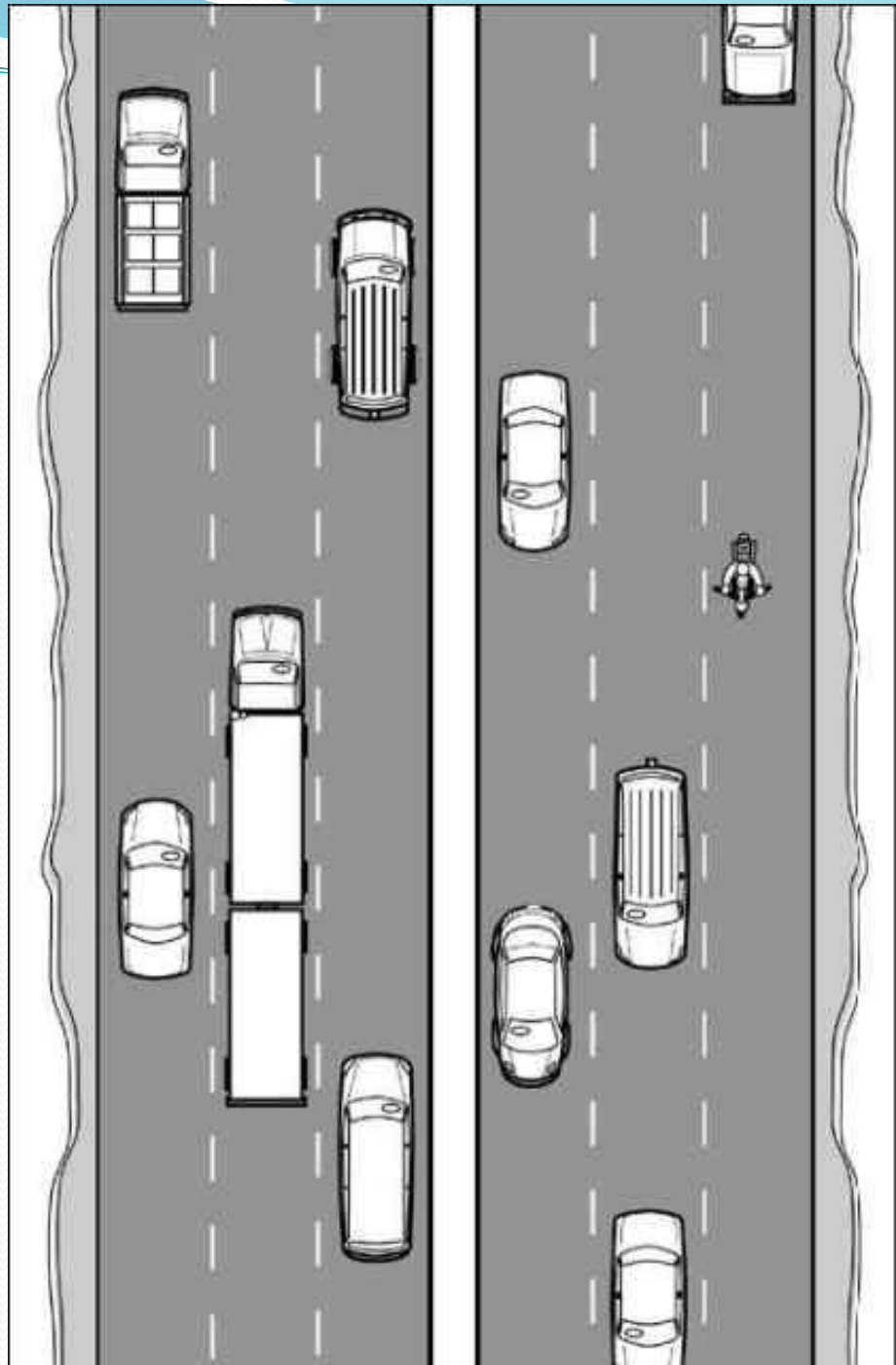
False



24. T or F

- **Because motorcycles are smaller than a car, it is legal to drive along side one in the same lane if there is room.**

False



25. T or F

- **On an upgrade, commercial vehicles often lose speed, making it easier to pass than a car.**

True



26. T or F

- **When two vehicles reach an intersection at the same time, and there is no stop sign or signal, The driver of the vehicle on the right must yield to the vehicle on the left.**

False

- The car on the right has the right-of-way.



27. T or F

- **Commercial vehicles require less stopping distance than cars.**

False

80 km/h



Stopping distance is approx. 90 m.

80 km/h



Stopping distance is approx. 60 m.

28. T or F

- **It is illegal to pass a passenger van that is required to stop at all railroad crossings even if the train is not present**

True

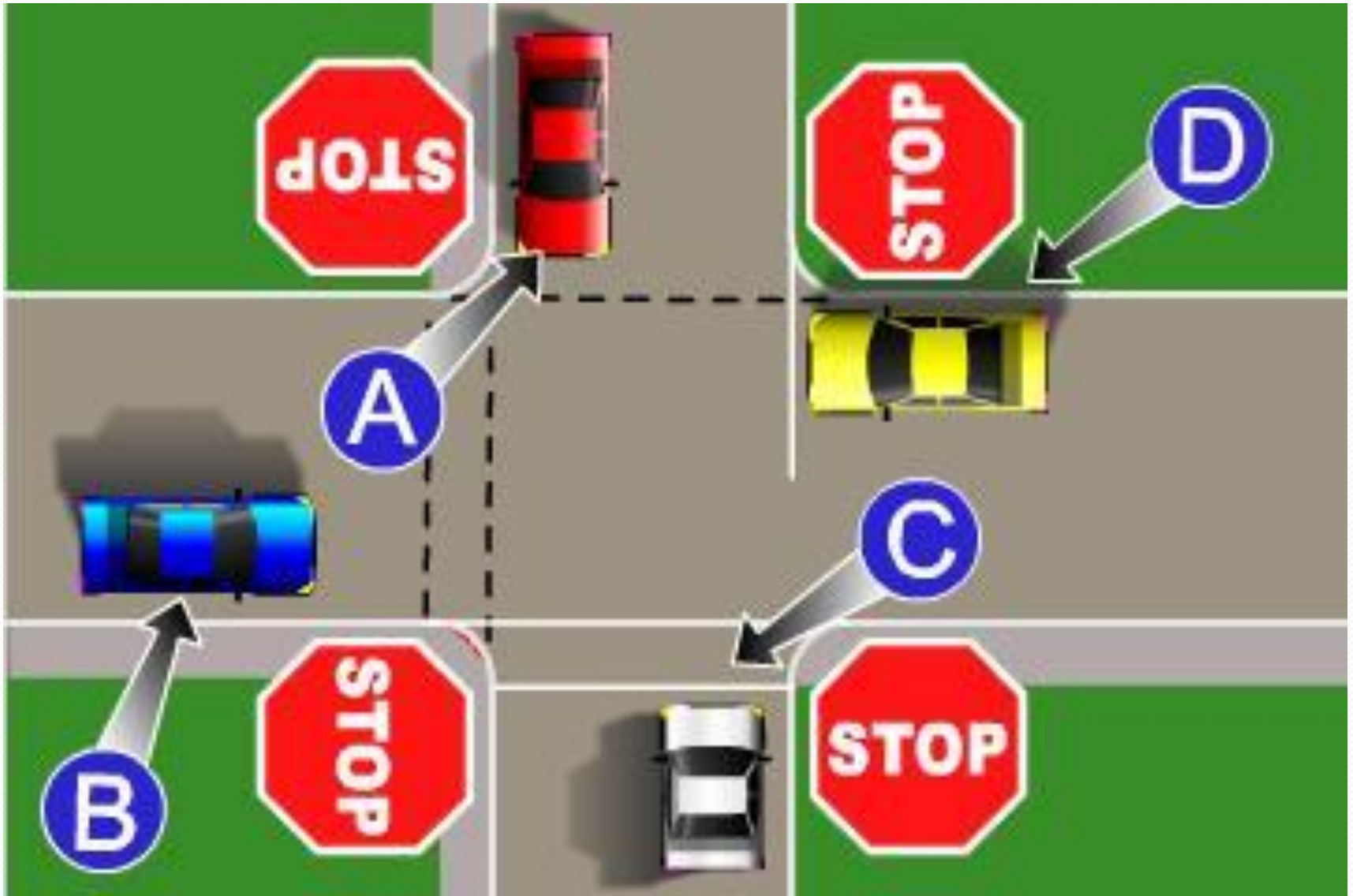
- Middle of page 48 drivers manual



29. T or F

- **When a stop sign is present, you must stop at the marked crosswalk.**

True



30. T or F

- **If you disobey the speed limit in a work zone, The fine is \$300 when workers are present.**

True

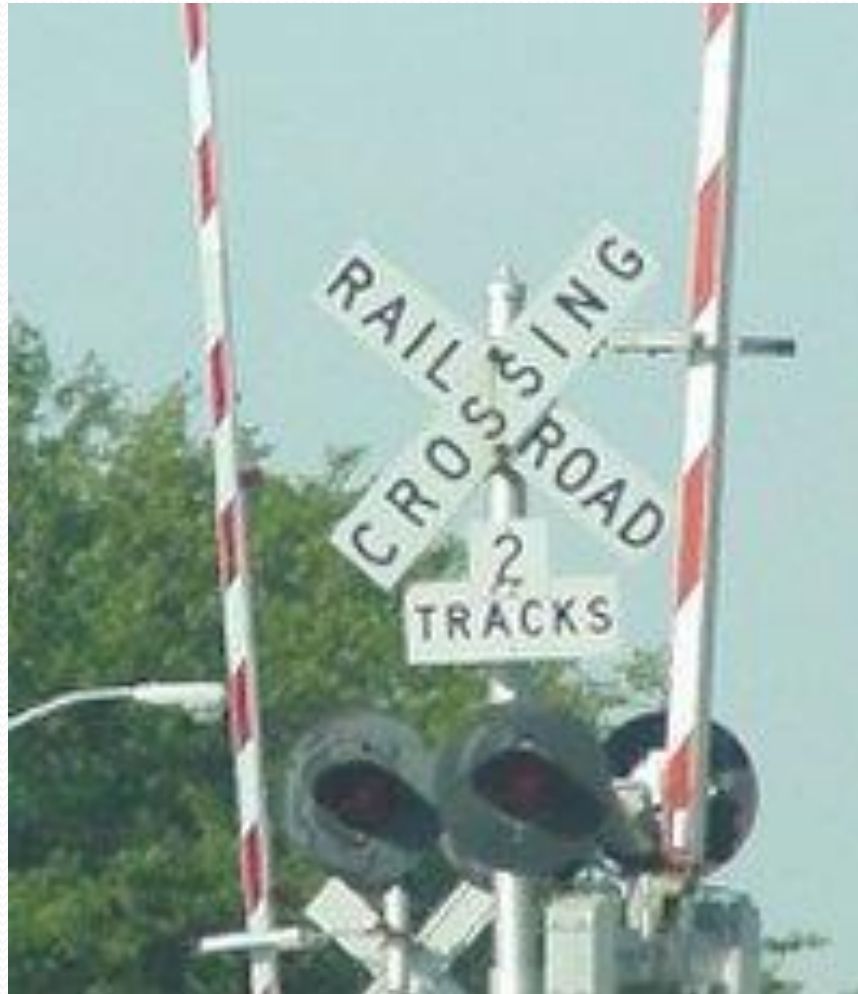




31.

- **Warns that a train is approaching.**

Flashing lights, bells, and gates at railroad crossings





32.

- **Blind spots for commercial vehicles.**

NO-ZONE

Don't Hang Out In The
NO-ZONE



Share the Road Safely with Trucks



33.

- **Capable of traveling at 30 mph or less.**

Motorized bike



34.

- **Pushes vehicles away from each other and is caused by large vehicles.**

Turbulence

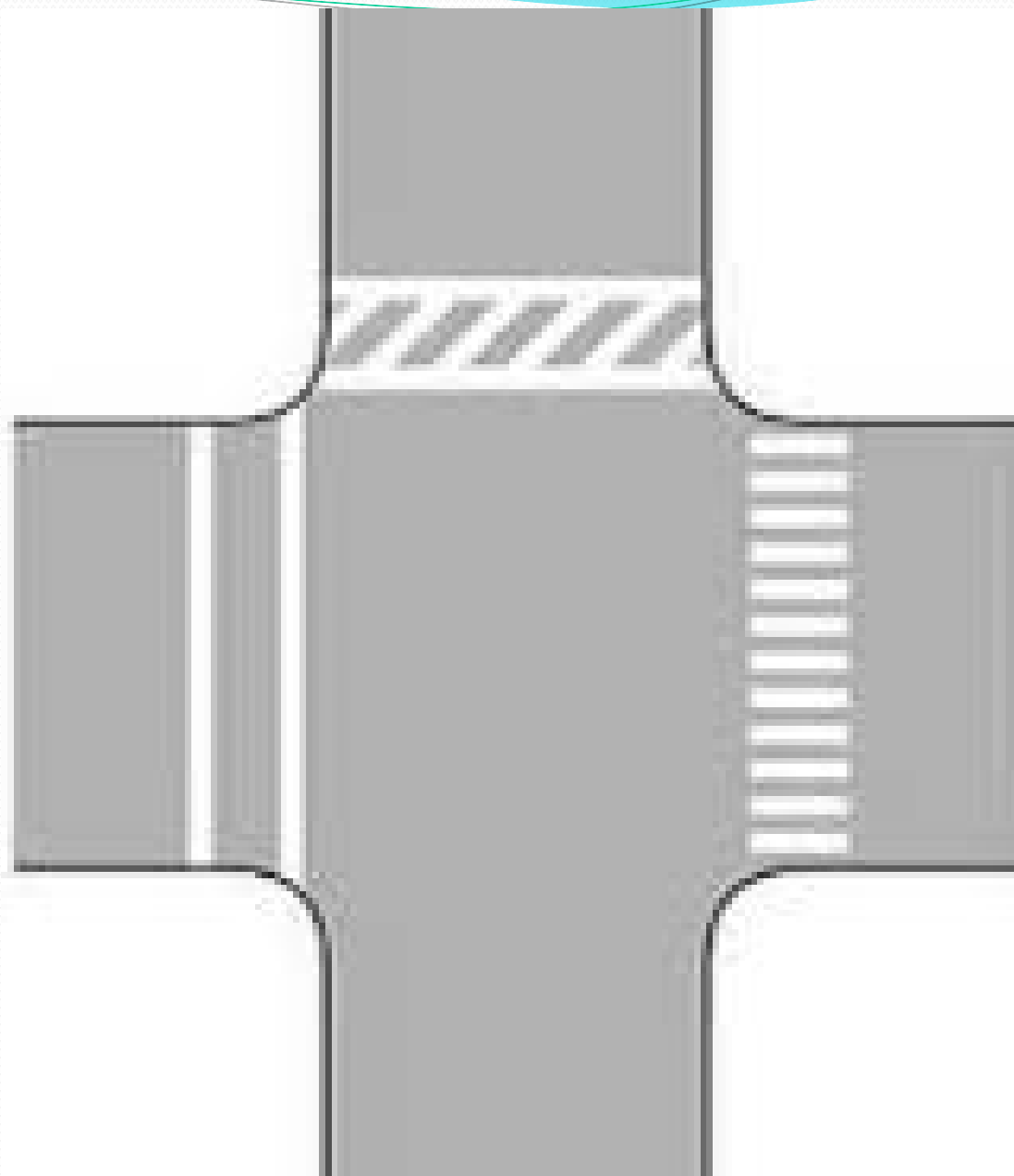




35.

- **Marked with solid white lines.**

Cross walk

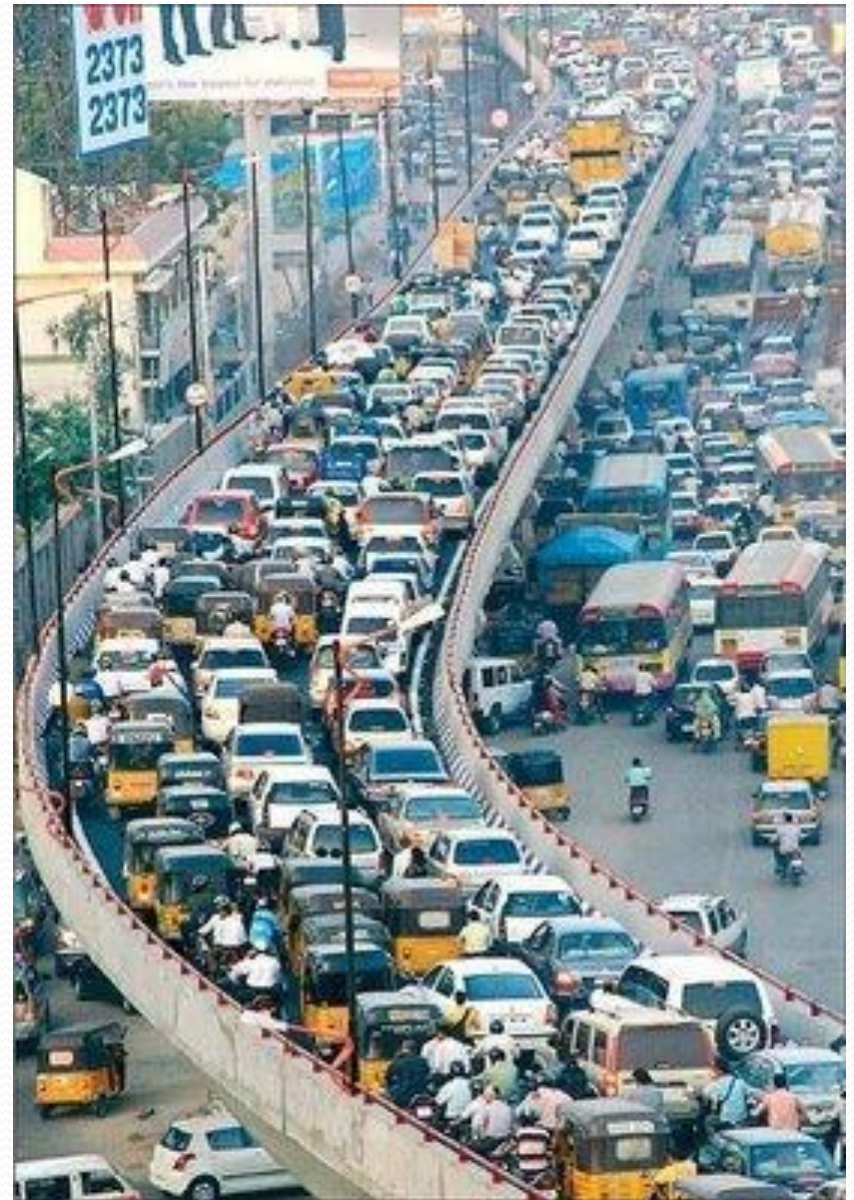




36.

- **Laws that help traffic flow smoothly and safely.**

Right-of-way





37.

- **Students who assist schoolmates with crossing at a street or highway.**

Student Safety Patrol





38.

- **Areas where road construction is underway.**

Highway Work Zone



39.

- **Areas where a road intersects a sidewalk and there are no solid lines painted on the road.**

Unmarked Crosswalk



40.

- **Motor vehicle weighing more than 26,000 pounds that is used to transport passengers and property**

Commercial vehicle



The end

GOOD

LUCK ON
YOUR FISH!