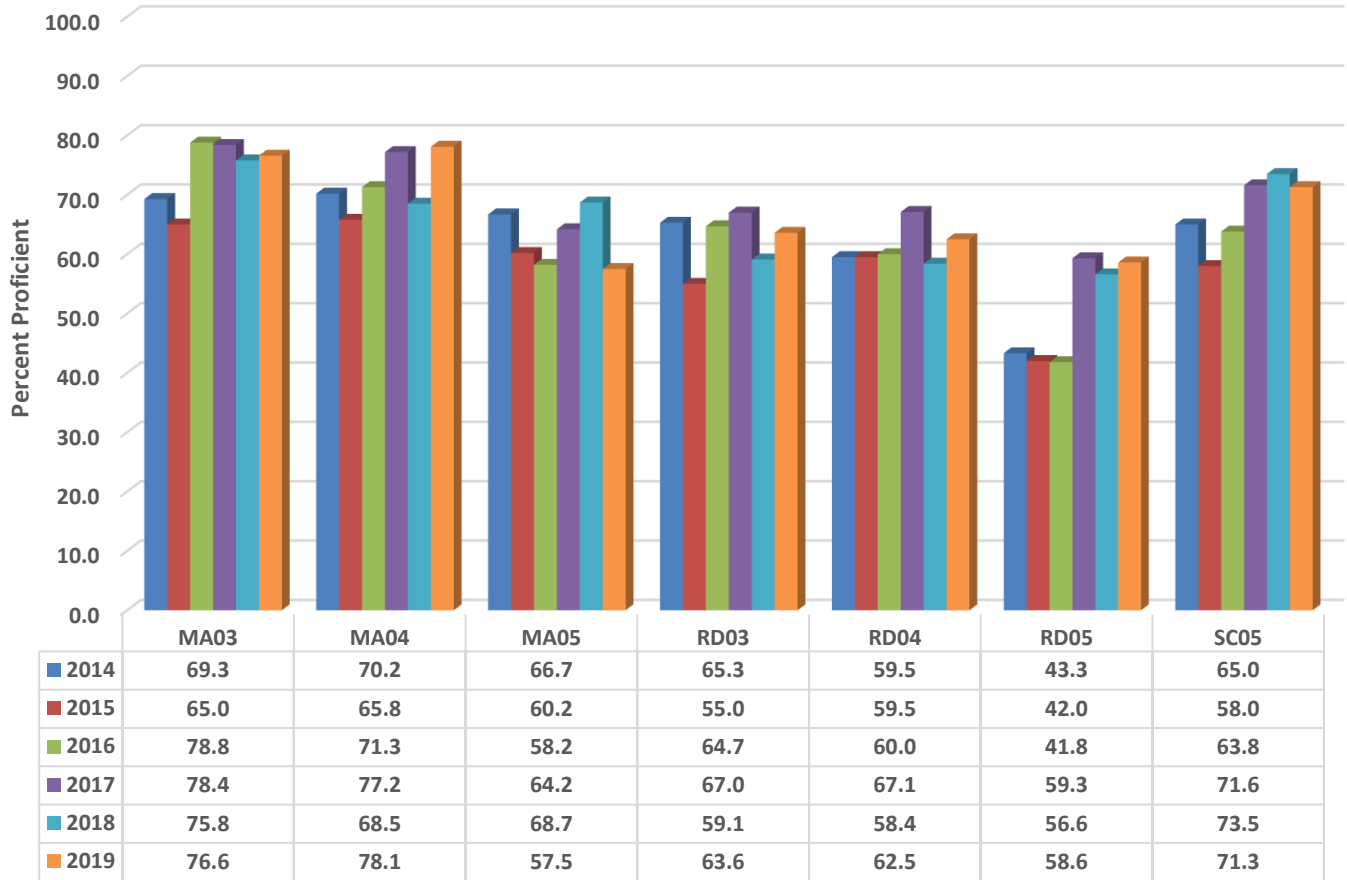


Grays Chapel Elementary Six Year Comparison Using GLP



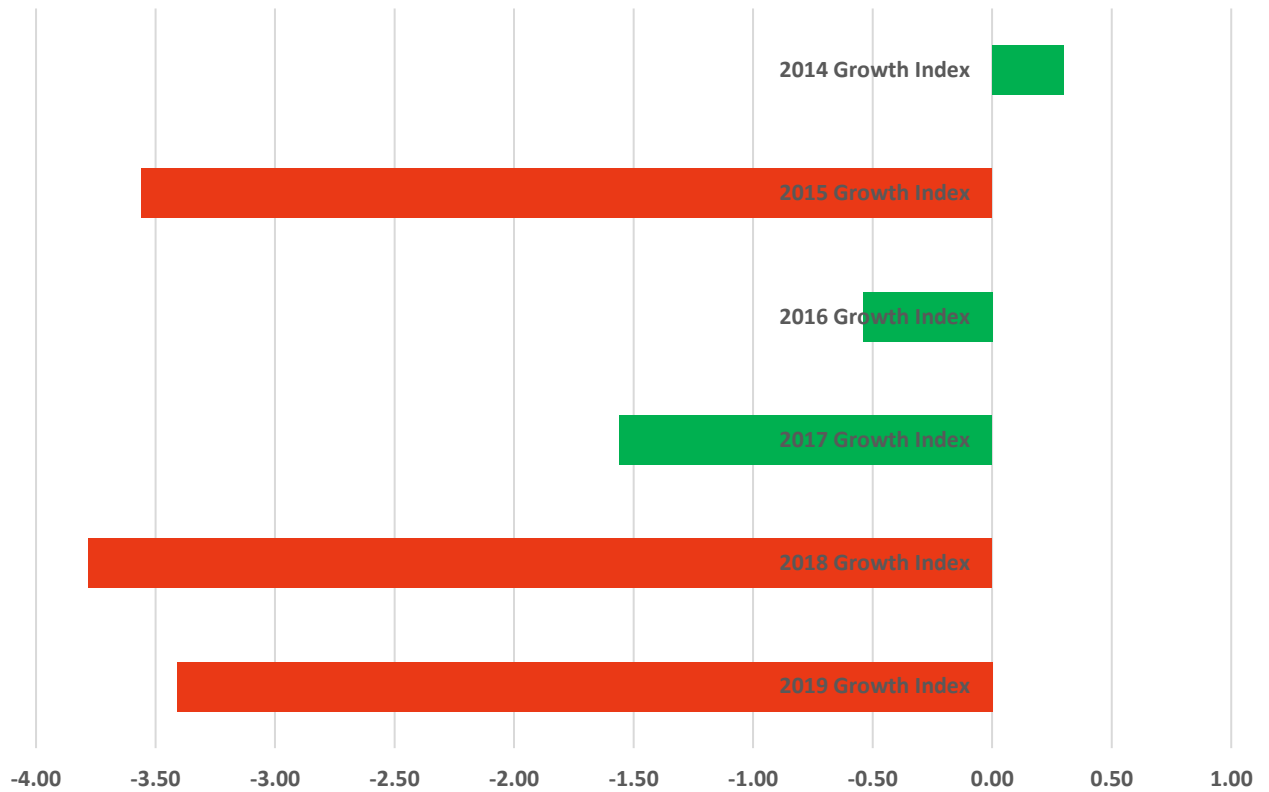
READY Accountability Model

	CCR Denominator	CCR Percent	GLP Denominator	GLP Percent
2014	498	52.2	498	63.3
2015	582	47.6	582	57.7
2016	568	55.8	568	62.9
2017	577	58.4	577	69.3
2018	559	57.8	559	65.7
2019	543	54.9	543	66.5

State and Former Federal AMO Targets

	Growth Status	Total Targets	Targets Met	Target Percent
2014	Met Expected Growth	18	15	83.3
2015	Did Not Met Expected Growth	27	20	74.1
2016	Met Expected Growth	11	11	100.0
2017	Met Expected Growth	13	13	100.0
2018	Did Not Met Expected Growth	9	9	100.0
2019	Did Not Met Expected Growth	11	11	100.0

Grays Chapel Elementary Six Year Growth Index



	2019 Growth Index	2018 Growth Index	2017 Growth Index	2016 Growth Index	2015 Growth Index	2014 Growth Index
■ Grays Chapel	-3.41	-3.78	-1.56	-0.54	-3.56	0.30

Growth Index

	School Accountability Type	Index	Level
2014	Math, Reading, and Science	.03	Met Expected Growth
2015	Math, Reading, and Science	-3.56	Did Not Met Expected Growth
2016	Math, Reading, and Science	-0.54	Met Expected Growth
2017	Math, Reading, and Science	-1.56	Met Expected Growth
2018	Math, Reading, and Science	-3.78	Did Not Met Expected Growth
2019	Math, Reading, and Science	-3.41	Did Not Met Expected Growth