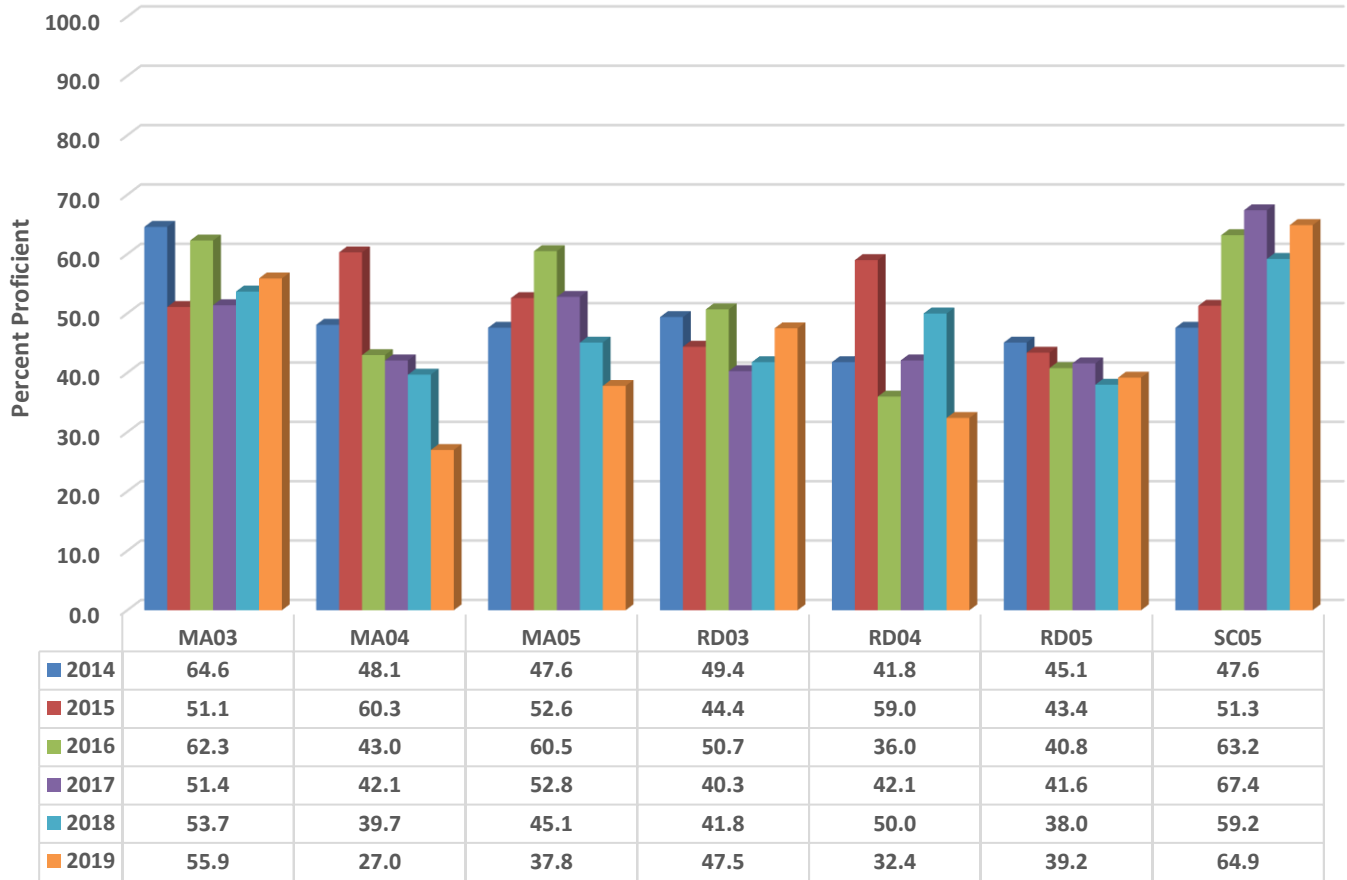


Liberty Elementary Six Year Comparison Using GLP



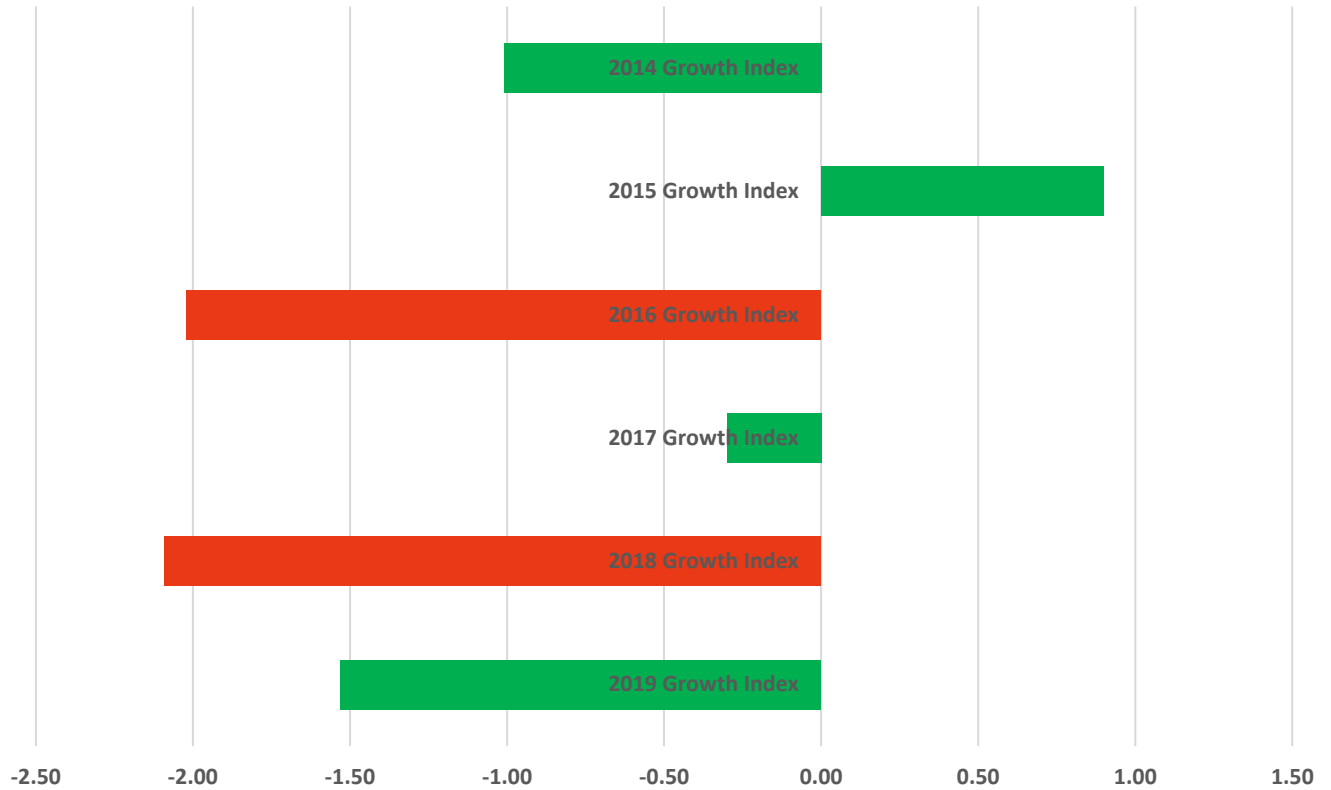
READY Accountability Model

	CCR Denominator	CCR Percent	GLP Denominator	GLP Percent
2014	562	37.2	562	49.1
2015	564	40.1	564	51.6
2016	538	40.1	538	50.4
2017	563	35.3	563	48.7
2018	483	36.4	483	46.8
2019	488	31.1	488	43.0

Growth and Participation Targets

	Growth Status	Total Targets	Targets Met	Target Percent
2014	Met Expected Growth	27	18	66.7
2015	Met Expected Growth	27	16	59.3
2016	Did Not Met Expected Growth	13	13	100.0
2017	Met Expected Growth	13	13	100.0
2018	Did Not Met Expected Growth	11	11	100.0
2019	Met Expected Growth	11	11	100.0

Liberty Elementary Six Year Growth Index



	2019 Growth Index	2018 Growth Index	2017 Growth Index	2016 Growth Index	2015 Growth Index	2014 Growth Index
■ Liberty	-1.53	-2.09	-0.30	-2.02	0.90	-1.01

Growth Index

	School Accountability Type	Index	Level
2014	Math, Reading, and Science	-1.01	Met Expected Growth
2015	Math, Reading, and Science	0.9	Met Expected Growth
2016	Math, Reading, and Science	-2.02	Did Not Met Expected Growth
2017	Math, Reading, and Science	-0.3	Met Expected Growth
2018	Math, Reading, and Science	-2.09	Did Not Met Expected Growth
2019	Math, Reading, and Science	-1.53	Met Expected Growth