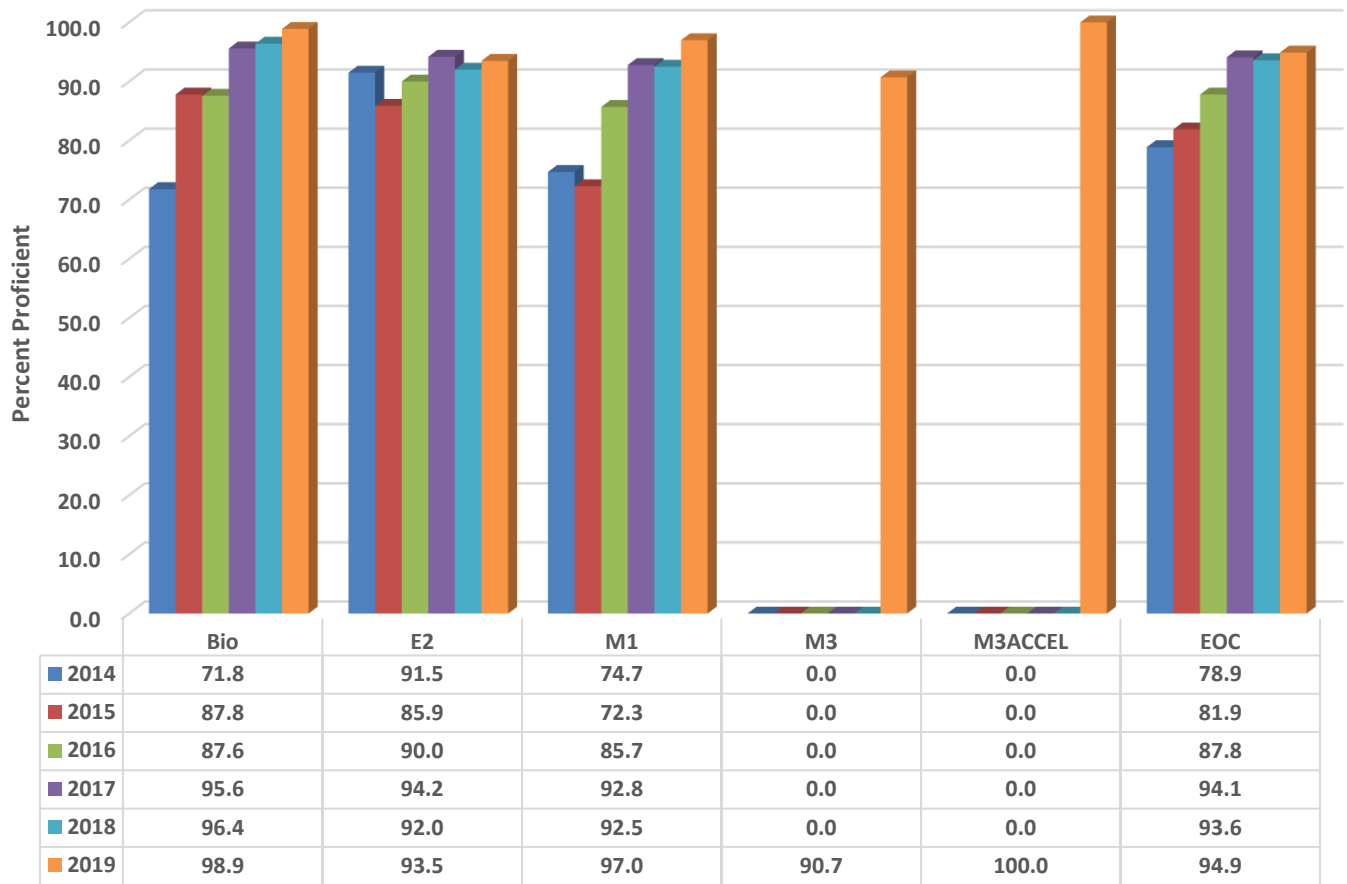


### Randolph Early College High Six Year Comparison Using GLP



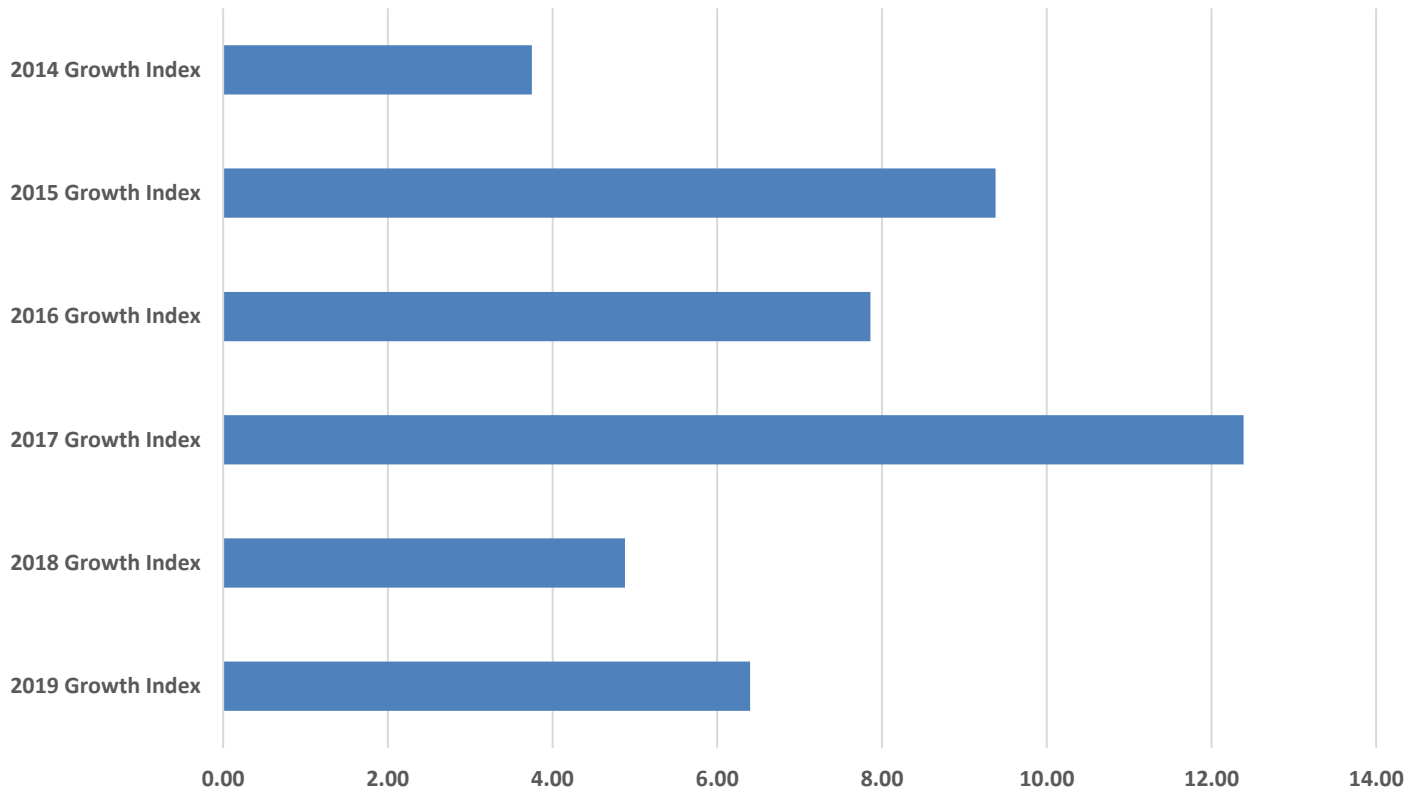
### READY Accountability Model

|      | CCR Denominator | CCR Percent | GLP Denominator | GLP Percent |
|------|-----------------|-------------|-----------------|-------------|
| 2014 | 237             | 64.6        | 237             | 78.9        |
| 2015 | 276             | 74.6        | 276             | 81.9        |
| 2016 | 270             | 78.9        | 270             | 87.8        |
| 2017 | 273             | 86.1        | 273             | 94.1        |
| 2018 | 264             | 87.1        | 264             | 93.6        |
| 2019 | 293             | 79.5        | 293             | 94.9        |

### Growth and Participation Targets

|      | Growth Status            | Total Targets | Targets Met | Target Percent |
|------|--------------------------|---------------|-------------|----------------|
| 2014 | Exceeded Expected Growth | 28            | 28          | 100.0          |
| 2015 | Exceeded Expected Growth | 32            | 32          | 100.0          |
| 2016 | Exceeded Expected Growth | 19            | 19          | 100.0          |
| 2017 | Exceeded Expected Growth | 17            | 17          | 100.0          |
| 2018 | Exceeded Expected Growth | 10            | 10          | 100.0          |
| 2019 | Exceeded Expected Growth | 13            | 13          | 100.0          |

### Randolph Early College High Six Year Growth Index



|         | 2019 Growth Index | 2018 Growth Index | 2017 Growth Index | 2016 Growth Index | 2015 Growth Index | 2014 Growth Index |
|---------|-------------------|-------------------|-------------------|-------------------|-------------------|-------------------|
| ■ RECHS | 6.40              | 4.88              | 12.39             | 7.86              | 9.38              | 3.75              |

### Growth Index

|             | School Accountability Type                      | Index | Level                    |
|-------------|---|-------|--------------------------|
| <b>2014</b> | Math I, Biology, and English II                 | 3.75  | Exceeded Expected Growth |
| <b>2015</b> | Math I, Biology, and English II                 | 9.38  | Exceeded Expected Growth |
| <b>2016</b> | Math I, Biology, and English II                 | 7.86  | Exceeded Expected Growth |
| <b>2017</b> | Math I, Biology, and English II                 | 12.39 | Exceeded Expected Growth |
| <b>2018</b> | NC Math I, Biology, and English II              | 4.88  | Exceeded Expected Growth |
| <b>2019</b> | NC Math I, NC Math III, Biology, and English II | 6.40  | Exceeded Expected Growth |