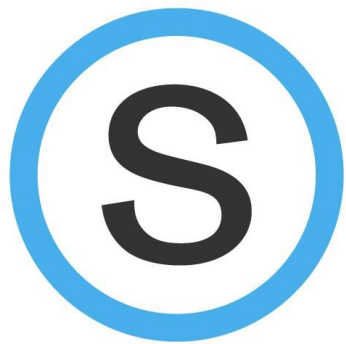


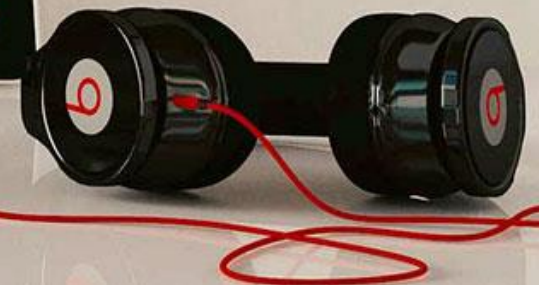
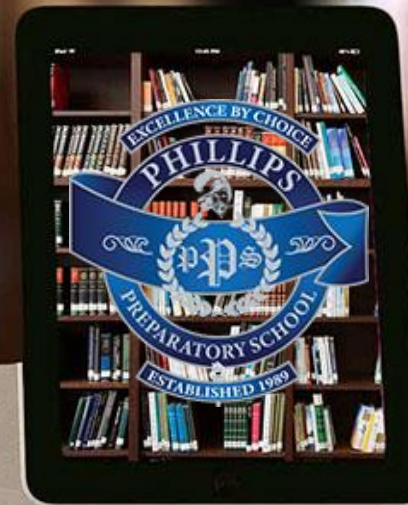
# WELCOME TO PHILLIPS!

## PARENT MEETING AND MEET THE TEACHER

AUGUST 20, 2020



schoolology®



# The Winds of Change

“I can't change the direction of the wind, but I can adjust my sails to always reach my destination.” -Jimmy Dean

*Principal A. Dennis*



*Asst. Principal J. Dudley-Lewis*



*Asst. Principal R. Raulerson*



# Learner Expectations



- Meet Magnet Requirements
- Follow IB Learner Profile
- Actively Participate  
(Remotely and On-Campus)
- Prepare Materials
- Promote Academic Honesty
- Request Help When Needed



# Remote Learning — Schoology

**Teachers Instruct  
From Their  
Classrooms**

**Live Instruction On  
Google Meet for First  
30 Minutes of Class**

**Course Material,  
Assignments, And  
Assessments All  
Through Schoology**

**Parent-Teacher  
Conferences Via Google  
Meet and Weekly  
Progress Emails Through  
Schoology**



# Daily Schedule



If students have questions or need additional help, they can stay in the live instruction session with their teacher or email the teacher your questions. Your teacher may schedule an appointment to assist you.

Prepare to login 7:20- 7:25

- Gather materials, go to [mcpss.schoology.com](https://mcpss.schoology.com)
- Login to Schoology with school email & password.
- Sign in to your 1<sup>st</sup> period class by 7:30 and wait for instructions.

Period 1: 7:31 - 8:23 (52)

Live instruction 7:31 -8:01

Online Assignments 8:02-8:23

Period 2: 8:26 - 9:18 (52)

Live instruction 8:28 -8:58

Online Assignments 8:59-9:18

Period 3: 9:21 - 10:13 (52)

Live instruction 9:23 -9:53

Online Assignments 9:54-10:13

Restroom 10:13-10:17



**6<sup>th</sup> Grade**

**1<sup>st</sup> Lunch Wave**

10:20-10:45 (25)

**Period 4**

10:48-11:40 (52)

Live Instr. 10:50-11:20

Online Lesson 11:21-11:40

**Period 5**

11:43-12:35 (52)

Live Instr. 11:45-12:15

Online Lesson 12:16-12:35

**7<sup>th</sup> Grade**

**Period 4**

10:20 -11:12 (52)

Live Instr. 10:22-10:52

Online Lesson 10:53-11:12

**2<sup>nd</sup> Lunch Wave**

11:15-11:40 (25)

**Period 5**

11:43-12:35 (52)

Live Instr. 11:45-12:15

Online Lesson 12:15-12:35

**8<sup>th</sup> Grade**

**Period 4**

10:20 -11:12 (52)

Live Instr. 10:22-10:52

Online Lesson 10:53-11:12

**Period 5**

11:15-12:07 (52)

Live Instr. 11:17-11:47

Online Lesson 11:48-12:07

**3<sup>rd</sup> Lunch Wave**

12:10-12:35 (25)

Period 6: 12:38-1:32 (54)

Live instruction 12:40 -1:10

Online Assignments 1:12-1:32

Period 7: 1:35-2:30 (55)

Live instruction 1:35 -2:05

Online Assignments 2:06-2:30

**Dismissal 2:30**

# Attendance

- MCPSS Attendance Policy remains in effect.
- Students should follow their class schedule. **Attendance will be recorded by teachers in Schoology.** Attendance will be posted on the following school day.
- Daily log-in to Schoology will be required for all students during remote learning.
- Recordings will be available for students who are not able to follow the regular school schedule due to absence.



# Remote Learning Support Help Line

Parents should call the school first for help with Remote Learning. Contact your school **first** for issues with Schoology during school hours, Monday – Friday.

Technical Support Hours will be from  
8AM – 8 PM Monday – Friday  
221-7777, option 1 for technical  
assistance.



# Electives and Athletics



- **Electives will be offered through Schoology for the first nine weeks.**
- **Middle school athletic programs are postponed until further notice.**
- **CDC and ALSDE guidelines will be followed.**
- **Measures to promote health and safety will be implemented.**



# Academic Tutoring and Homework Help for students

**FREE K-12**  
**Academic Tutoring**  
**& Homework**  
***10:00 a.m. to 11:00 p.m***



HOMWORK  
ALABAMA

CAREER  
ALABAMA

APLS LIBRARY  
CATALOG

FIND YOUR  
LOCAL LIBRARY

TUTOR.COM  
STATS

## HomeworkAlabama.org™



***Free Homework Help,  
Tutoring and Test Prep  
for Alabamians!***

# Devices and Learning Resources Pick-Up



## Schedule for Pick-up of Student Resources

Parents/Guardians may check out laptops and Wi-Fi hotspots for students if needed. Some courses will assign math textbooks. Students will receive math workbooks, planners, and schedules. Parents will drive to the front of the school (afternoon carpool lanes). Parents and students will remain in their vehicles. Pick up times are 8 a.m. - 11 a.m. and 12 p.m. - 3 p.m. on the date assigned.

6<sup>th</sup> Grade

**AUG  
25**

-Phillips Carpool Lanes-

7<sup>th</sup> Grade

**AUG  
27**

-Phillips Carpool Lanes-

8<sup>th</sup> Grade

**AUG  
28**

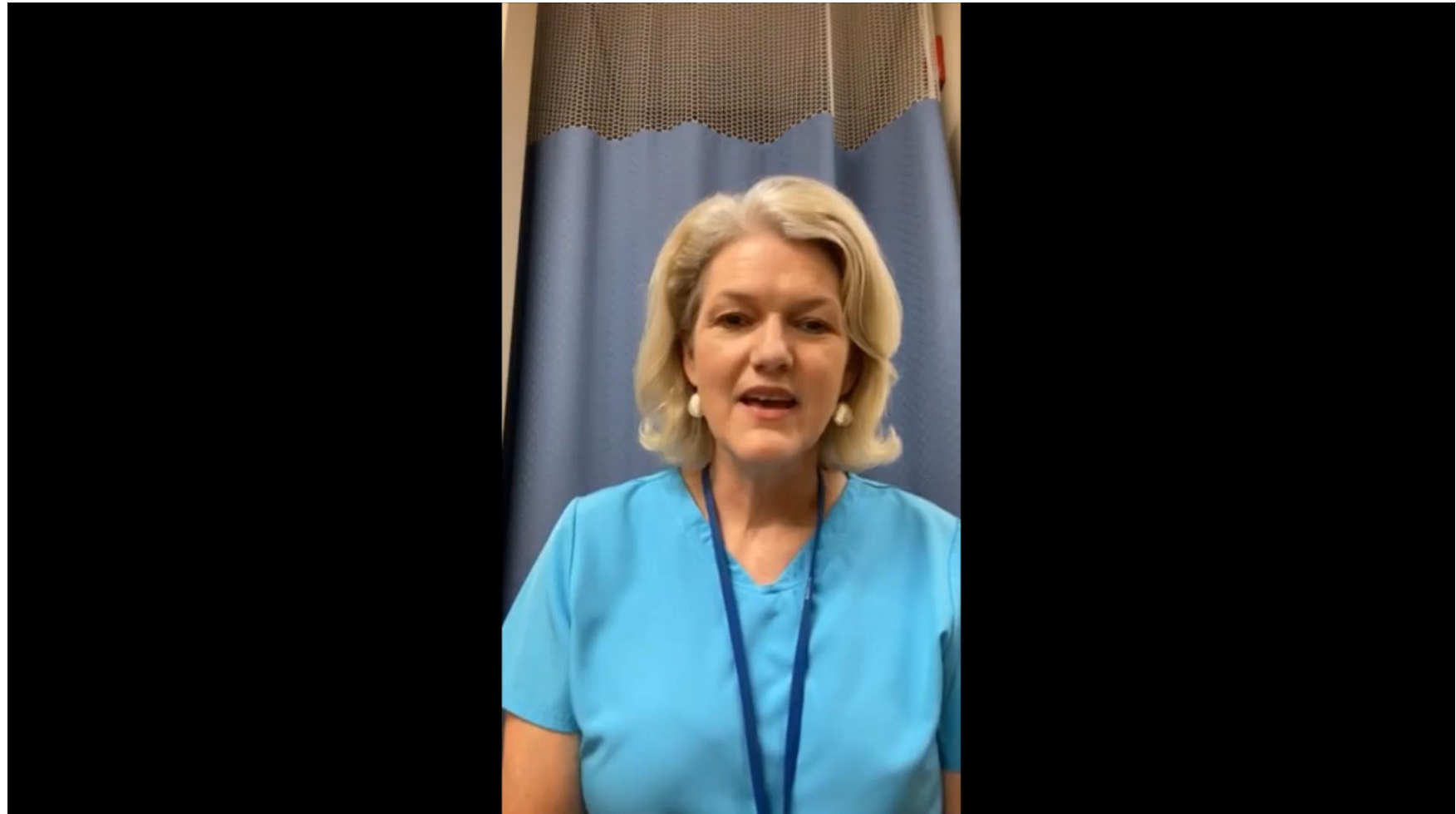
-Phillips Carpool Lanes-

- Face Masks
- Social Distancing
- Regular Hand Washing
- Sanitizing and Disinfecting Commonly Touched Surfaces



# Health and Safety

## Welcome Message from Nurse Campbell





# BREAKFAST AND LUNCH



Mobile County  
PUBLIC SCHOOLS

WE ARE PARTICIPATING  
IN THE MCPSS FEEDING  
PROGRAM, BEGINNING  
ON **MONDAY, AUGUST 17.**

Breakfasts and lunches  
may be picked up  
curbside on Mondays for  
MCPSS students for the  
full week.



Phillips Preparatory will be giving out meals free-of-charge as part of the MCPSS Summer Feeding Program on Mondays from 9:30-12:30. Parents will pull-up behind the cafeteria and pick up 1 ready to eat breakfast and lunch. The other 4 meals that are being provided will need to be refrigerated immediately. Parents must stay in their cars at all times. Beginning September 1st, you must have your students' lunch numbers to pick up the meals. We look forward to serving our children.

# Counseling and Support Services

## GOALS PLANNING SUCCESS

Our comprehensive middle school guidance program includes the following student services:

- Individual counseling
- Group counseling
- Educational and career information
- School orientation to include crisis, facilitative, preventive, and developmental counseling



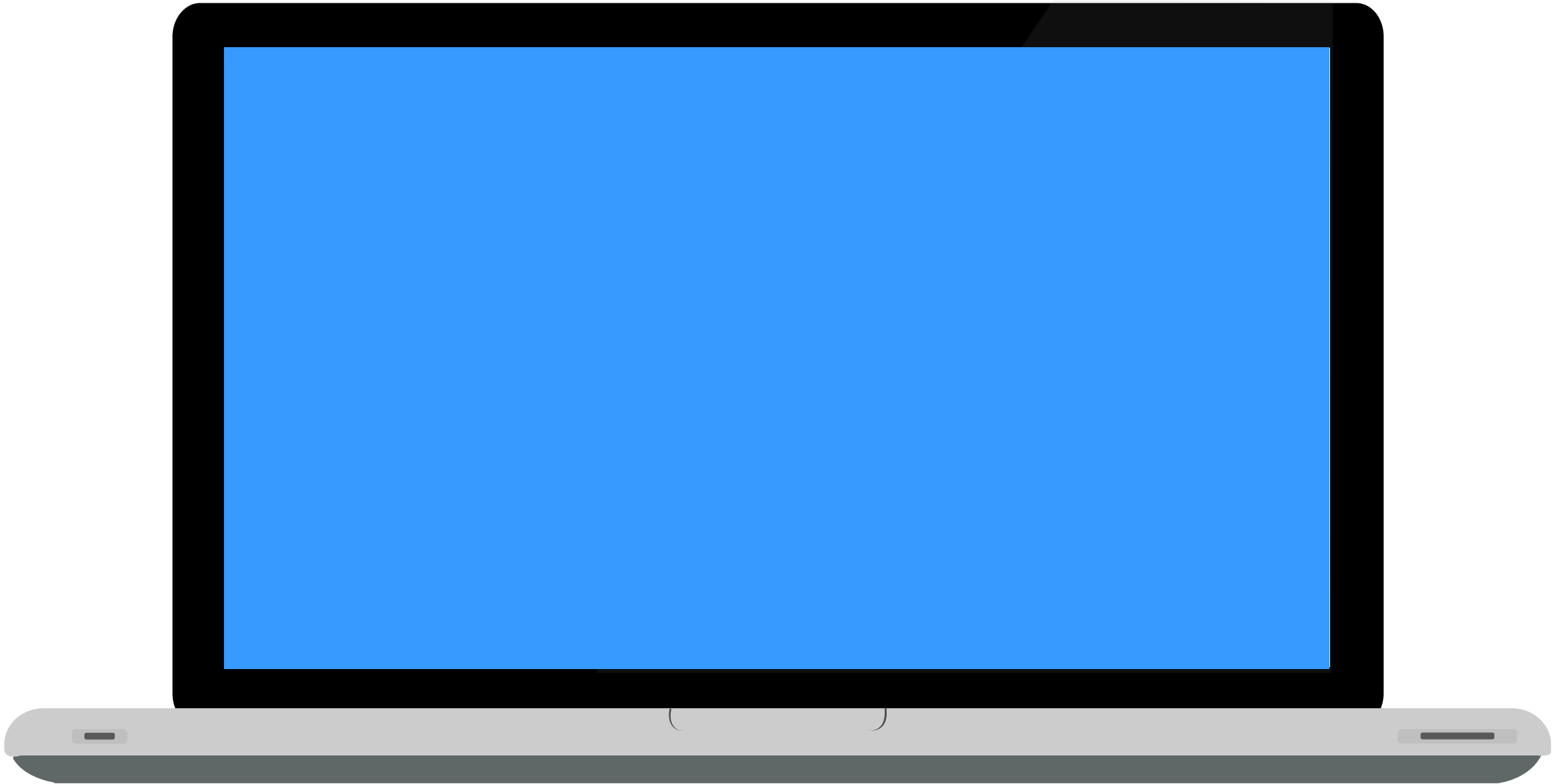
*Ms. Burden (6<sup>th</sup> and 7<sup>th</sup>)*

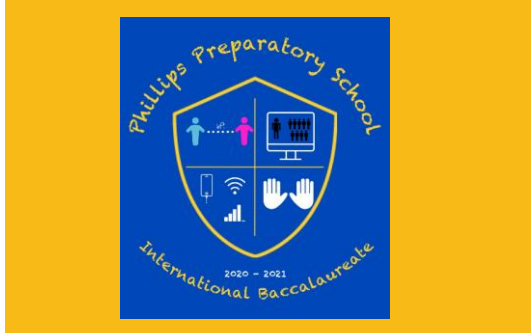


*Ms. S. Eiland (7<sup>th</sup> and 8<sup>th</sup>)*



# Welcome Messages from the Teachers





# Recipe for Success Communication and Connections Are Key



## Relationships

We must establish and cultivate positive relationships between school and home. Though physically isolated, stay connected!