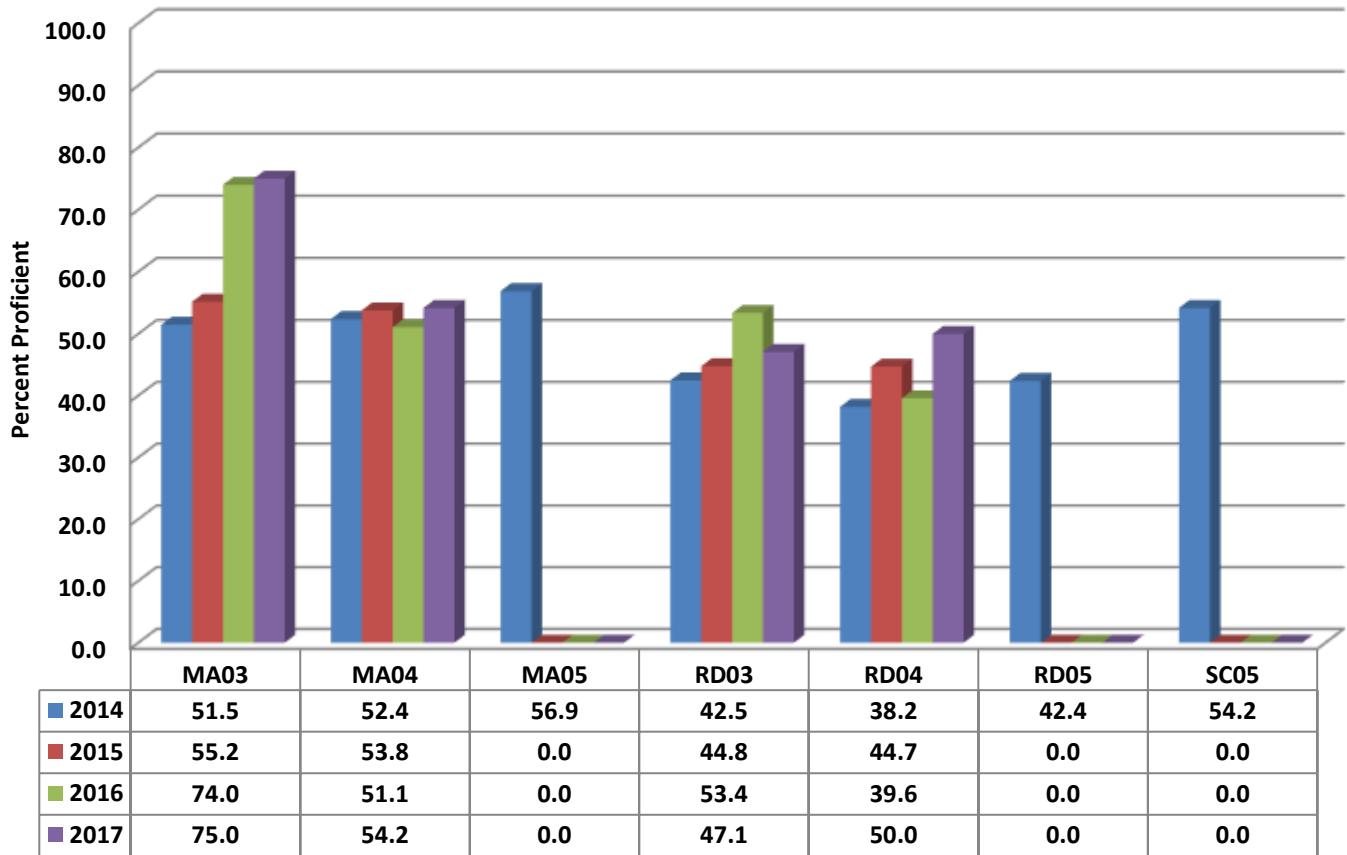


## Randleman Elementary Four Year Comparison Using GPL



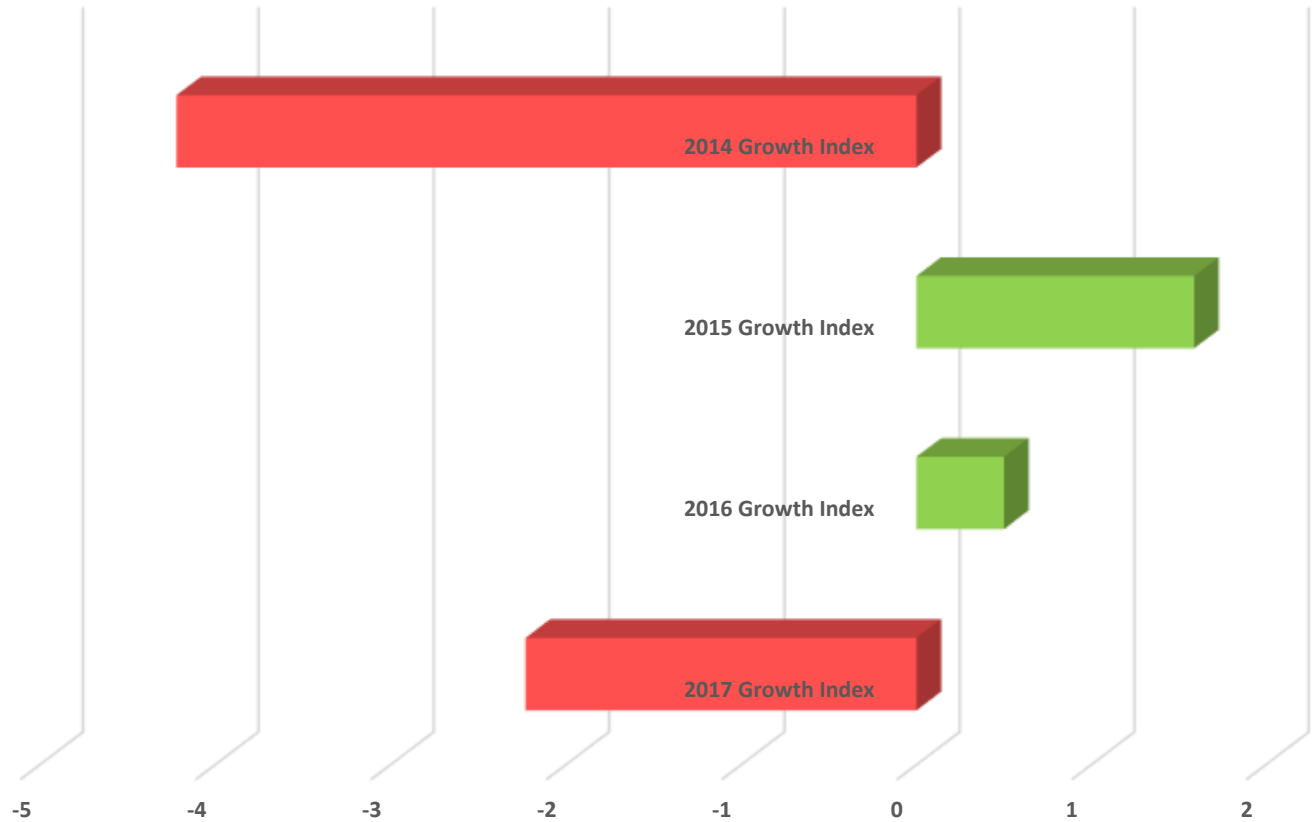
### READY Accountability Model

	CCR Denominator	CCR Percent	GLP Denominator	GLP Percent
2014	947	37.2	947	48.5
2015	554	36.5	554	49.6
2016	570	44.6	570	54.7
2017	567	46.4	567	56.3

### State and Former Federal AMO Targets

	EVASS Status	Total Targets	Targets Met	Target Percent
2014	Did Not Met Expected Growth	35	26	74.3
2015	Met Expected Growth	21	13	61.9
2016	Met Expected Growth	10	10	100.0
2017	Did Not Met Expected Growth	10	10	100.0

### Randleman Elementary Growth Index



	2017 Growth Index	2016 Growth Index	2015 Growth Index	2014 Growth Index
RES	-2.23	0.5	1.59	-4.22

### Growth Index

	School Accountability Type	Index	Level
<b>2014</b>	Math, Reading, and Science	-4.22	Did Not Met Expected Growth
<b>2015</b>	Math, and Reading	1.59	Met Expected Growth
<b>2016</b>	Math, and Reading	0.5	Met Expected Growth
<b>2017</b>	Math, and Reading	-2.23	Did Not Met Expected Growth